

## PUBLIC PHONE SIGNS

### ILLUMINATED TYPES

### IDENTIFICATION AND INSTALLATION

#### 1. GENERAL

1.01 The following signs are included in this section:

- KS-16422 (Fig. 1)
- KS-19322 (Fig. 2 and 3)
- KS-20031 (Fig. 4)

1.02 This section is reissued to:

- Change graphics on signs from word TELEPHONE to phone
- Revise text
- Add information on KS-20031 sign
- Delete information on P-19A400 switch assembly which is rated MD.

Since this reissue covers a general revision, arrows ordinarily used to indicate changes have been omitted.

1.03 Signs shall not create a hazard in passageways or other areas. Minimum height specifications are included with installation information for each particular sign.



*Always disconnect power or remove cord from power receptacle before doing any work on a sign. Do not connect signs to nonstandard or temporary electrical wiring.*

#### 2. IDENTIFICATION

##### KS-16422 SIGN

2.01 The following list numbers are available:

- (a) KS-16422, List 1 sign (Fig. 5).
  - Basic assembly less dome, lamp, and mounting brackets.

(b) KS-16422, List 4 bracket assembly (Fig. 6)

- Mounting bracket for mounting List 1 to a vertical surface.

(c) KS-16422, List 5 bracket (Fig. 7)

- Mounting bracket for mounting List 1 to a horizontal surface.

(d) KS-16422, List 8 dome (Fig. 5)

- Blue dome with the word phone and an arrow on each side plus a white translucent area on the bottom.

(e) KS-16422, List 9 Dome (Fig. 5)

- Blue dome with Bell System Emblem and word phone on each side.

(f) KS-16422, List 10 Dome (Fig. 5)

- Blue dome with the word phone and an arrow on each side.

(g) KS-16422, List 11 Dome (Fig. 5)

- Blue dome with Bell System Emblem and word phone on each side plus a white translucent area on the bottom.

2.02 The KS-16422 sign is intended for use indoors or in sheltered areas, at semiexposed or remote coin stations, to direct customers to the coin phone.

2.03 The sign is designed to accept one 15-watt, T-12 fluorescent lamp 18 inches long (F15T12/CW).

- Lamp not furnished—order separately
- Use cool-white lamps



Fig. 1—KS-16422 Illuminated Sign

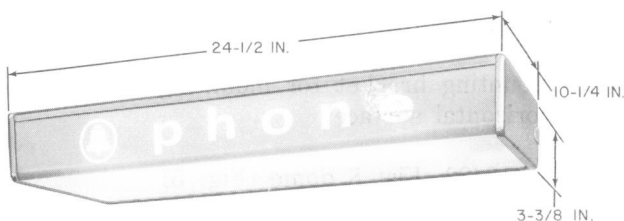


Fig. 2—KS-19322 Illuminated Sign for Phone Service

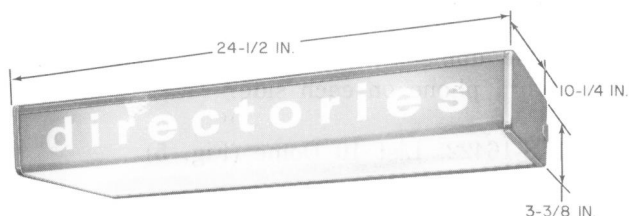


Fig. 3—KS-19322 Illuminated Sign for Directory Service

**2.04** The sign is equipped with a 5-foot, 3-conductor power cord with a molded 3-wire grounded plug.

**2.05** A 110/125-volt ac power source is required.

**2.06** Overall dimensions of the sign, less mounting bracket are:

- Length—20-inches
- Width—4-inches
- Height—6-inches

**2.07** The top metal cover and two metal ends are finished with gray lacquer.

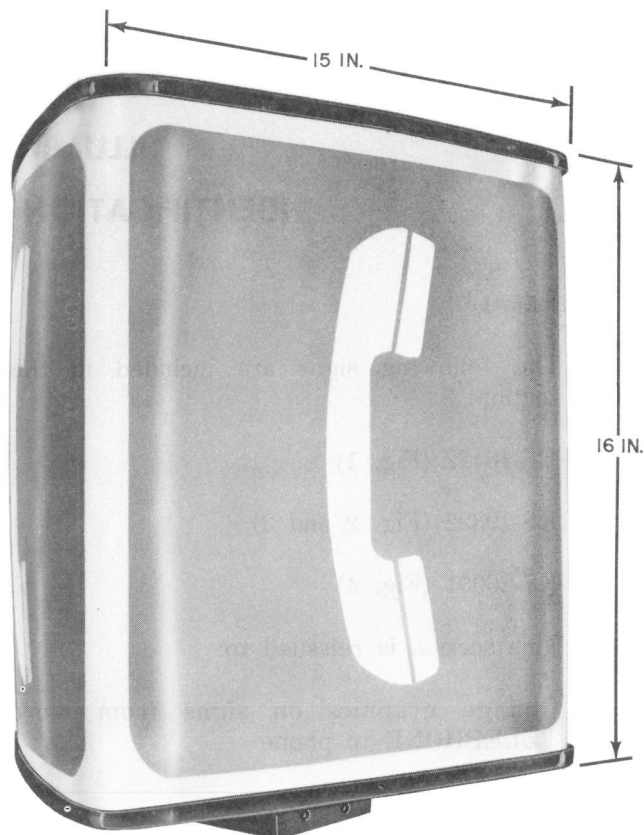


Fig. 4—KS-20031 Illuminated Sign

#### KS-19322 SIGN

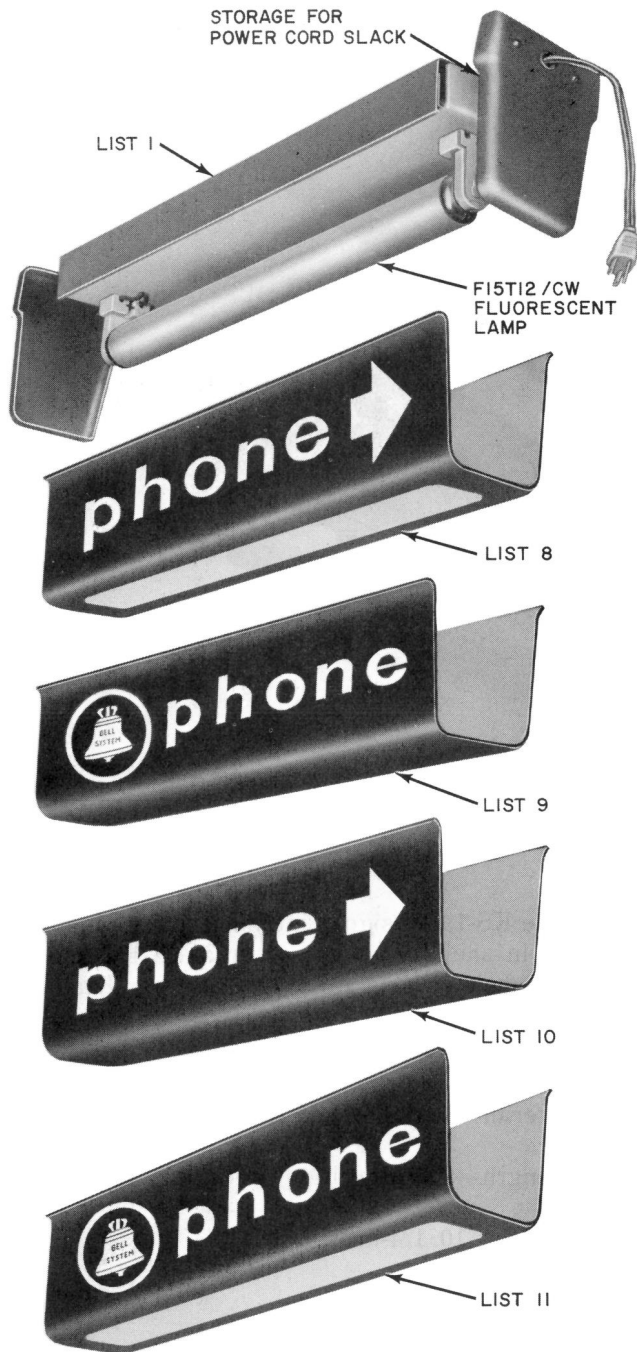
**2.08** The following list numbers are available.

(a) KS-19322, List 1 sign (Fig. 8)

- Basic sign frame for single sign installation
- Includes a 7-foot, 3-conductor power cord with a moulded 3-wire grounded plug
- Equipped with one 20-watt, T-12 fluorescent lamp 24 inches long (F20T12/CW)

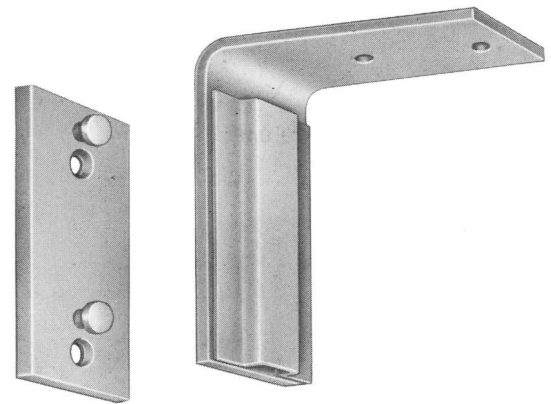
(b) KS-19322, List 2 Sign

- Basic sign frame for multiple sign installations
- Same as the list 1 except it does not include a power cord and must be wired by a local electrician



**Fig. 5—KS-16422 Illuminated Sign Showing Optional Lenses**

- Equipped with two locking screws which prevent it from being lifted from the backplate.
- Knockouts are provided in cord storage area to allow wiring to enter from top, bottom, or either side.



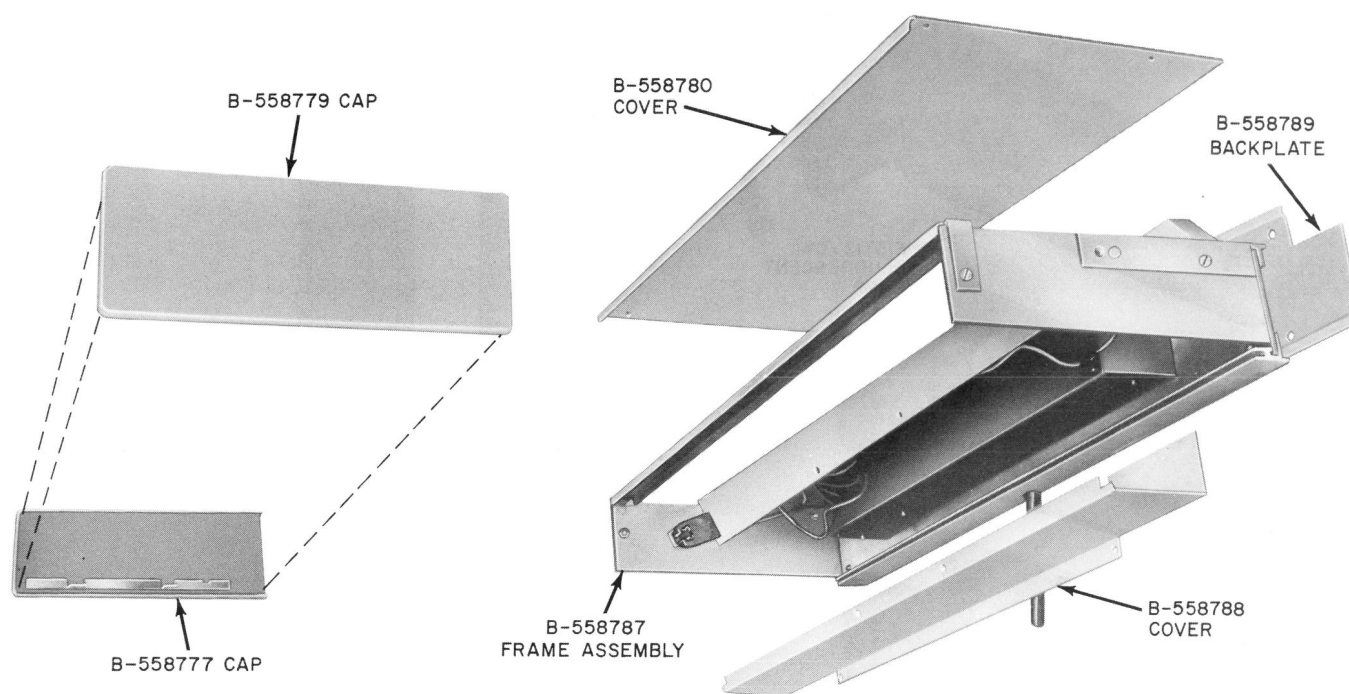
**Fig. 6—KS-16422, List 4 Mounting Bracket Assembly**



**Fig. 7—KS-16422, List 5 Mounting Bracket**

- (c) KS-19322, List 10 panel
  - Unlettered white translucent plastic
- (d) KS-19322, List 13 panel
  - Front area—blue translucent plastic
  - Bottom area—white translucent plastic
  - No letters
- (e) KS-19322, List 14 panel
  - White translucent plastic with blue letters (phone) and Bell System Emblem on front





**Fig. 8—KS-19322, List 1 Sign (Less Lamp)**

(f) KS-19322, List 15 panel

- Front area—blue translucent plastic with white letters (phone) and Bell System Emblem
- Bottom area—white translucent plastic (See Fig. 2)

(g) KS-19322, List 16 wire shield

- For use with KS-19267 coin telephone shelf

(h) KS-19322, List 17 panel

- Front area—blue translucent plastic with white letters (directories)
- Bottom area—white translucent plastic (See Fig. 3)

(i) KS-19322, List 18 panel

- White translucent plastic with blue letters (directories)

**2.09** The KS-19322 sign is intended for use indoors or in sheltered areas, over a KS-19267 coin telephone shelf or over directory racks and tables.

**2.10** A 110/125-volt ac power source is required.

**2.11** Overall dimensions of the sign are:

- Length—24-1/2-inches
- Width—10 1/4-inches
- Height—3 3/8-inches

**2.12** The metal parts of the sign exposed to view when installed are anodized aluminum.

**KS-20031 SIGN**

**2.13** The KS-20031 sign (Fig. 4) is intended for use indoors or outdoors over a KS-19426 walk-up, drive-up mounting.

**2.14** The sign consists of an acrylic plastic lens with a white upright handset symbol on a blue field with a white border.

**2.15** The sign is illuminated with a 100-watt, deluxe white, mercury lamp (G.E. Co. No. H100 DX38-4/A23 or equivalent)

- Lamp is furnished with sign (shipped loose)

**2.16** The sign is not equipped with a power cord and must be wired by a local electrician.

**2.17** Overall dimensions of the sign are:

- Height—16-inches
- Triangular Cross Section—15-inches each side

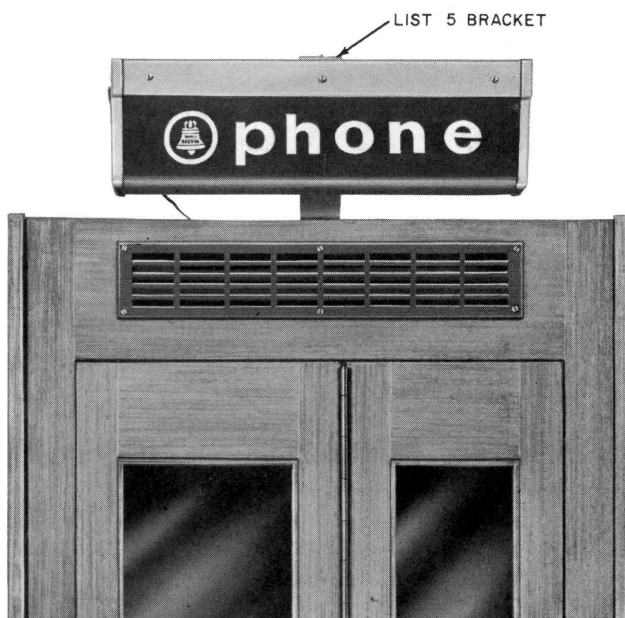
**2.18** The ends of the sign are closed by aluminum caps which are pulled together with 1/4-inch rods causing the lens to be compressed into watertight seals.

### 3. INSTALLATION

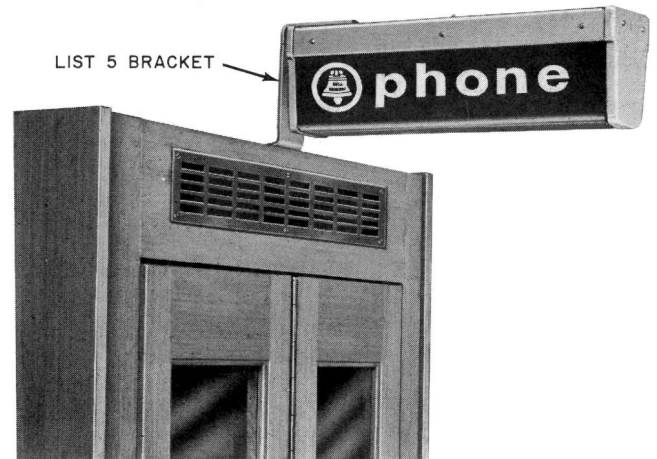
#### KS-16422 SIGN

**3.01** The KS-16422 sign may be mounted on a vertical surface with a List 4 mounting bracket assembly (Fig. 6) or on a horizontal surface with a List 5 mounting bracket (Fig. 7).

**3.02** The sign and mounting brackets are designed to permit parallel mounting with the mounting surface (Fig. 9) or projection at right angles from the mounting surface (Fig. 10).



**Fig. 9—Parallel Installation of KS-16422 Sign**



**Fig. 10—Projecting Installation of KS-16422 Sign**

**3.03** The lower edge of List 4 bracket shall be at least 85-1/2 inches from the floor.

**3.04** The lower edge of List 5 bracket shall be at least 83-1/2 inches from the floor.

**3.05** Fasteners for List 4 or 5 mounting brackets are listed in Table A.

**TABLE A**  
**FASTENERS FOR MOUNTING KS-16422,**  
**LIST 4 OR 5 BRACKETS**

SURFACE	FASTENER
Hardwood	1 - 1/4 inch, No. 14 RH wood screws
Softwood	1 - 3/4 inch No. 14 RH wood screws
Plaster on wood lath	2 - 1/4 inch, No. 14 RH wood screws
Masonry, unfinished	1 - 1/4 inch, No. 14 RH wood screw in 10 - 14 by 1 inch screw anchor
Masonry, finished	1 - 3/4 inch, No. 14 RH wood screw in 10 - 14 by 1 - 1/2 inch screw anchor
Hollow Tile	1/4-inch by 4-inch, RH toggle bolts or appropriate size wall anchors



**3.06** The four threaded holes on top of the unit (Fig. 11) are equipped with No. 8-32 by 7/16 BHM screws and No. 8 lockwashers. Use two screws to attach the unit to the mounting bracket and two to seal the holes not used.

**3.07** Install F15T12/CW lamp as follows (Fig. 11).

- (1) Remove power cord from cord storage area.
- (2) Remove screws from end cover plate and remove plate.
- (3) Slide plastic dome out of open end.
- (4) Install lamp in lamp holder.
- (5) Slide dome in place.
- (6) Install end cover plate and secure with screws.

**3.08** Plug power cord into an approved electrical receptacle.



*A 3-wire grounded electrical receptacle is preferred; however, a 2-wire receptacle may be used with the use of a plug adapter (Fig. 11). If ground potential is not available at the receptacle, run a No. 14 AWG wire from the adapter to a suitable ground.*

**3.09** Store excess power cord in top of sign unit.

#### KS-19322 SIGN

**3.10** the backplate (Fig. 12) must be securely fastened to the mounting surface.

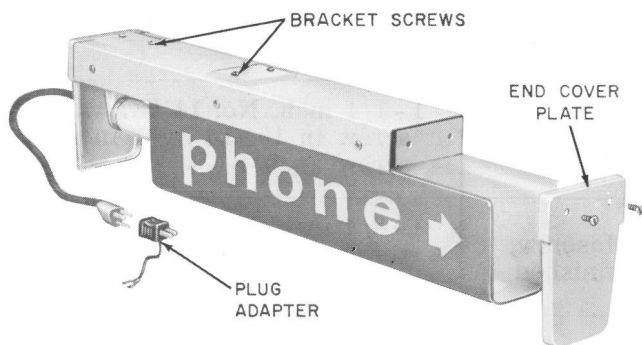


Fig. 11—KS-16422 Sign—Assembly of Parts

**3.11** Locate the backplate as follows:

- (a) When installed over a KS-19267 coin telephone shelf, bottom edge of backplate to top edge of shelf shall be 6 inches.
- (b) When installed over a directory shelf, bottom edge of backplate to floor shall be 73-1/2 inches.

**3.12** Use a KS-19267, List 10 auxiliary backboard assembly if an uneven wall surface or a wall with poor anchoring qualities prevent a neat and secure installation. Refer to Section 508-121-100.

**3.13** Table B lists fasteners for mounting the backplate.

**3.14** Install KS-19322, List 1 sign on the backplate as follows:

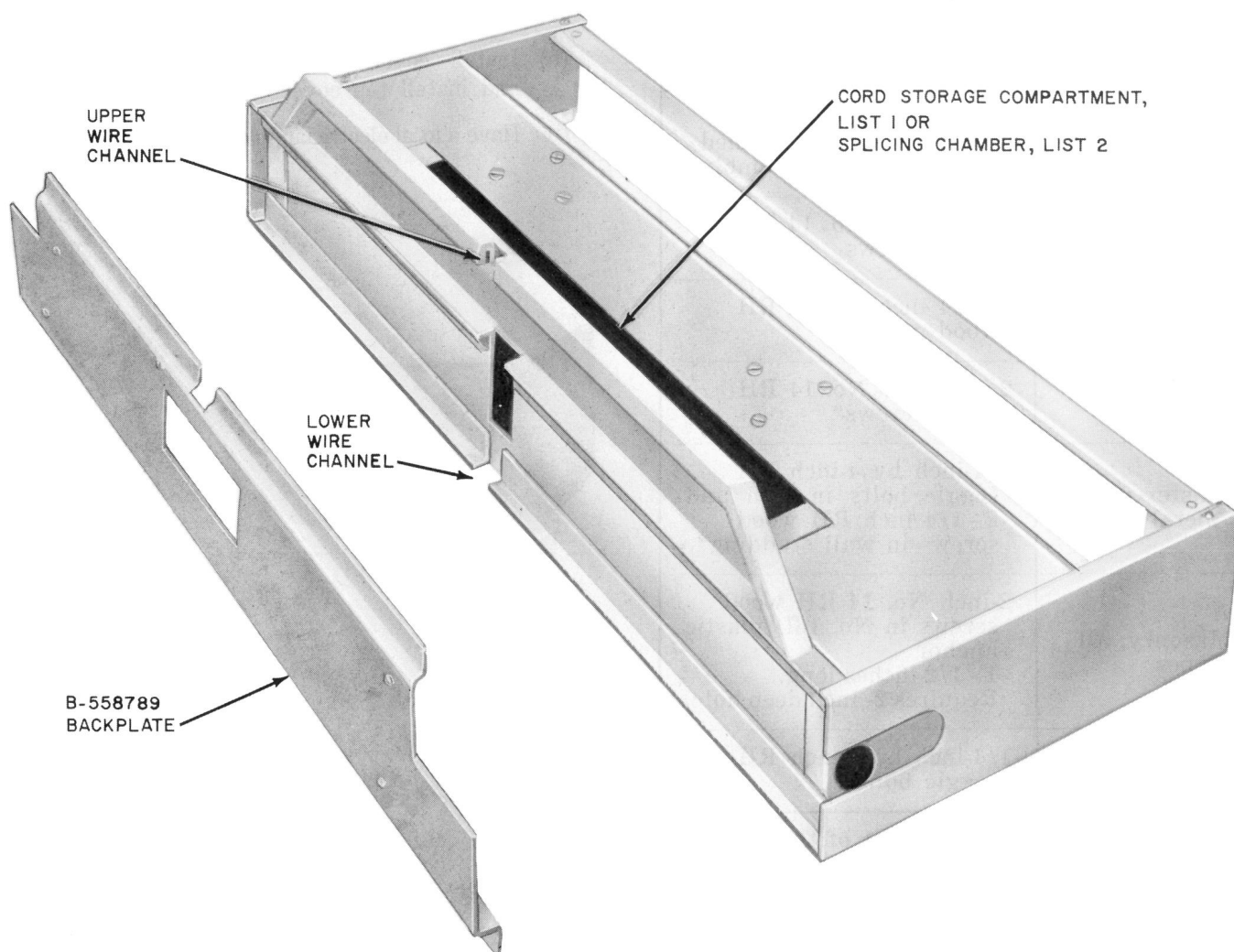
- (a) Remove top cover and end caps.
- (b) Insert the power cord through the hole in the rear wall of the cord storage compartment (Fig. 12).
- (c) Place cord in upper or lower channel opening as required.

**Note:** If the lower channel is used in a KS-19267 coin telephone shelf installation, place a KS-19322, List 16 wire shield over the exposed cord as shown in Section 508-121-100.

- (d) Engage lower slot of sign with lower flange of backplate (Fig. 13, Step 1).
- (e) Raise sign assembly as far as possible and tilt top of sign toward wall (Fig. 13, Step 2).

**Note:** Equal lifting pressure must be applied to each end of the sign assembly when installing or removing.

- (f) Allow sign to slide down, engaging upper slot and flange (Fig. 13, Step 3).
- (g) Place end caps on sign panel. See 2.08 for identification of panels.
- (h) Slide the panel and end caps onto sign frame and secure with the screws removed in (a).



**Fig. 12—KS-19322 Sign With Top Cover Removed**

- (i) Ensure that F20T12/CW lamp is secured in lamp holders.
- (j) Install top cover.
- (k) Plug power cord into an approved electrical receptacle.



*Refer to the READ in 3.08.*

**3.15** Install KS-19322, List 2 sign on backplate as follows:

- (a) Remove top cover and end caps.



*List 2 sign requires permanent type wiring. Ensure that the wiring is installed in accordance with local electrical and building codes.*

- (b) Remove the splicing chamber cover to make wiring area accessible.



**TABLE B**  
**FASTENERS FOR MOUNTING A**  
**KS-19322 SIGN BACKPLATE**

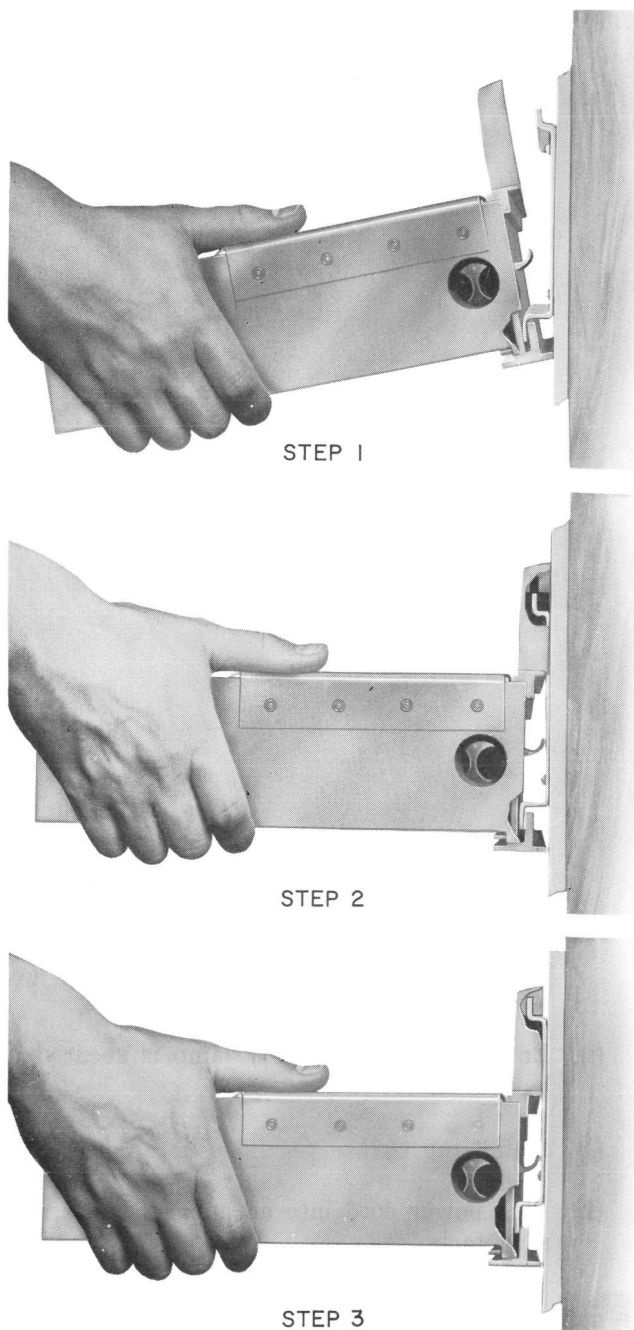
SURFACE	FASTENERS
KS-19267, L10 Backboard	3/4-inch 0.250-20 steel RHM screws (furnished with backboard assembly)
Hardwood	1 - 1/4 inch No. 14 RH wood screws
Softwood	1 - 3/4 inch No. 14 RH wood screws
Plaster on wood lath	2 - 1/4 inch No. 14 RH wood screws*
Plaster on metal lath	1/4-inch by 4-inch RH toggle bolts in lath and 2 - 1/4 inch RH wood screws in wall studding*
Masonry, all types	2-inch No. 14 RH wood screws in No. 16D plastic anchor 1 - 1/2 inches long. Requires 2- inch deep hole.
Hollow Tile	1/4-inch by 4-inch RH toggle bolts

\* At least one (preferably two) of the screws in the top row of holes shall be anchored in the wall studding. Drill additional 1/4-inch hole in backplate if necessary.

(c) List 2 sign is equipped with B-650473 support (Fig. 14). Use this support if wiring is to enter the sign from the rear and install 90-degree connector, if required, as follows:

- (1) If the upper wire channel (Fig. 12) is utilized, remove lower knockout in support.
  - (2) If the lower wire channel is utilized, remove upper knockout in support.
- (d) Refer to Note (3.14 (c)). Perform operations outlined in 3.14 (d) through (f).
- (e) Place two No. 8-32 by 5/16 RHM screws in the two threaded holes located near the lower corners of the rear wall (Fig. 15) to prevent sign from being removed from backplate.

- (f) Feed wire through end knockouts to adjacent sign(s).
- (g) Perform operations outlined in 3.14 (g) through (i).
- (h) Install cover over wire splicing chamber and install top cover.
- (i) Have a local electrician make power connections.



**Fig. 13—Installation of KS-19322 Sign**



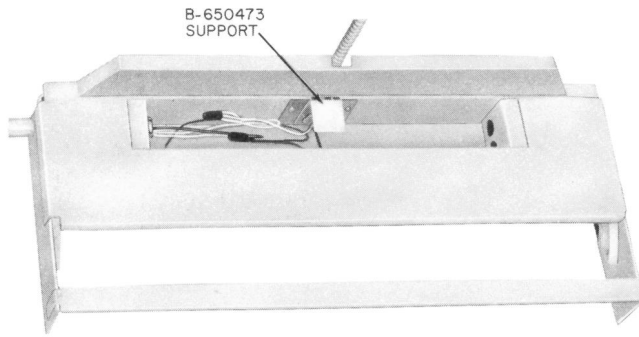


Fig. 14—KS-19322, List 2 Sign—Top View

#### KS-20031 SIGN

- 3.16** Install KS-20031 sign over the KS-19426 mounting as directed in Section 508-470-200.

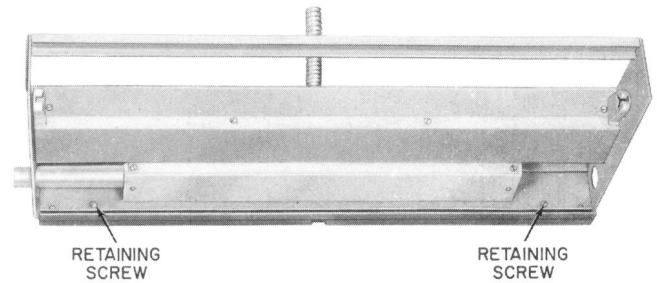


Fig. 15—KS-19322, List 2 Sign—Bottom View

#### SIGN CONTROL ASSEMBLY

- 3.17** A KS-19340, List 56 sign control assembly, which permits the customer to turn illuminated sign on or off at will, is available. Refer to Section 508-111-200 for complete information.