

SERVICE

752-TYPE TELEPHONE SETS

1. GENERAL

1.01 This section is issued to provide maintenance and connection information on the 752-type telephone set when used with 1A, 1A1, or 1A2 Key telephone systems. The connection information for the 752-type telephone set was formerly contained in Section 502-750-402 which is hereby canceled.

2. MAINTENANCE

2.01 Work done on customer's premises should be limited to replacement of accessible parts which are available through supply channels; refer to ordering guide tables in Reference section.

2.02 Ringers, handsets, dials, etc. used in these sets should be maintained in accordance with section covering the particular item.

Note: On the P1A ringer, with the volume control lever in the extreme low position, it shall not be necessary for the clapper to strike the gong as long as the armature is vibrating.

Mat

2.03 The exterior of these sets should be clean and not marred or chipped. The vinyl-faced mat may be cleaned with a water-dampened KS-2423 or equivalent cloth. Replace defective mat as follows:

- (1) Grasp mat retainer frame at top, lift upward and out to release frame from panel of set.
- (2) Remove handset from hook of set.
- (3) Pull out handset cord to allow working slack.
- (4) Remove mat from face of panel.
- (5) Remove grommet from mat as shown in Fig. 1.

- (6) Install grommet in new mat by reversing procedure used in removal.
- (7) Position mat on panel and secure using the mat retainer frame.

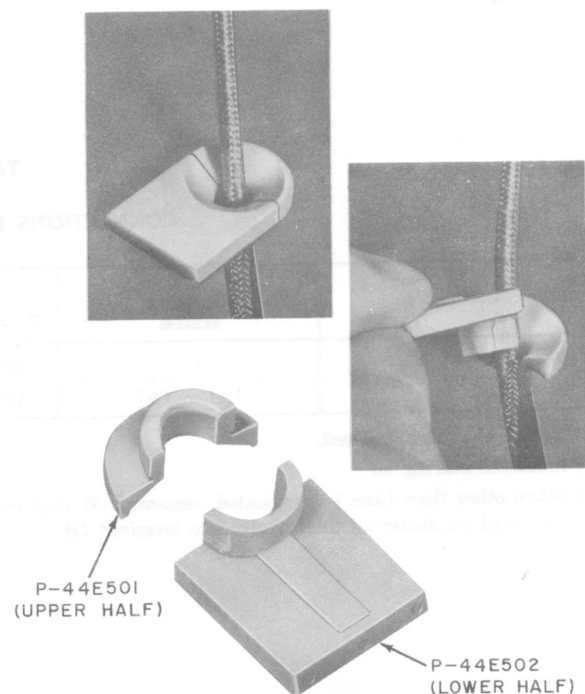


Fig. 1—Removal of Handset Cord Grommet

3-Type Cord Reel

2.04 To test the cord reel, pull the handset cord out to its maximum length. With the cord maintained perpendicular to the panel, the cord should retract fully. Any twists in the cord should be removed before making test.

2.05 Replace the cord reel if the cord will not retract or if the cord is frayed, kinked, or noisy. Field maintenance of the cord reel, or replacement of the cord, is not recommended.

762A Loudspeaker and P-29E579 Transmitter

2.06 These components are used in 3-type speakerphone system. Refer to appropriate connection and maintenance section in Division 512.

TABLE A
PICKUP-SIGNAL KEY CONVERSION

CONVERSION OPTIONS	635A2 OR 635A5 KEY LEADS			STRAP
	(Y-BR)	(BR)	(BR-BK)	(S-R)
HPPPPP	M	M	X	M
HPPPPS	M	M	SG	M
HPPSSS	M	M	X	SG
HPPSSS	M	X	X	SG
HPPPP*S*	M	M	N	5H
HPPP*P*S*	M	X	N	5H
HPP*P*P*S*	X	X	N	5H

* These options are used for private or intercommunicating lines with a common signal key. Use SG lead for common signal ground and S lead of 2nd, 3rd, or 4th pickup key as required. The signal key will operate the signal circuit of the selected line.

TABLE B
CONNECTIONS FOR LINE EXCLUSION

EXCLUSION	KEY TELEPHONE SYSTEM	EXCLUSION KEY LEADS							
		(BL-W)	(W-BL)	(O-W)	(W-O)	(V-BL)	(BL-V)	(V-O)	(O-V)
On any Line	1A	R*	T*	1B†	H*	ET	ER	EH	EB
	1A1 or 1A2	R*	T*	†	H*	ET	ER	EH	EB

* Terminal of line involved.

† Insulated and stored

‡ When other than Line 1 is excluded, remove O-W cord conductor from terminal 1B; insulate and store. Connect balance lead cord conductor of line involved to terminal 1B.

TABLE C
DISCONNECTING SPEAKERPHONE FEATURE (See Note)

	TEL SET COMPONENT LEADS						SPEAKERPHONE COMPONENT LEADS						
	TEL SET PLUG			LINE SWITCH	DIAL		SWITCH ASSEMBLY			PRINTED WIRING BOARD			SPEAKER
Conductor color	(V-G)	(G-V)	(V-S)	(W-S)	(Y)	(Y)	(Y-BL)	(BL-Y)	(O-Y)	(Y-O)	(S-Y)	(S-BK)	(Y-G)
Disconnect from	RR*	R1	AG	S1	7	8	S	F1	P1	M2	M2	M1	S2

* RR terminal on network.

Note: When speakerphone feature of set is not required but set is multiplied with a set providing speakerphone operation, disconnect, insulate, and store these leads to avoid interference with working circuits. If interference continues, disconnect leads at multiplying point as near as possible to speakerphone control unit.

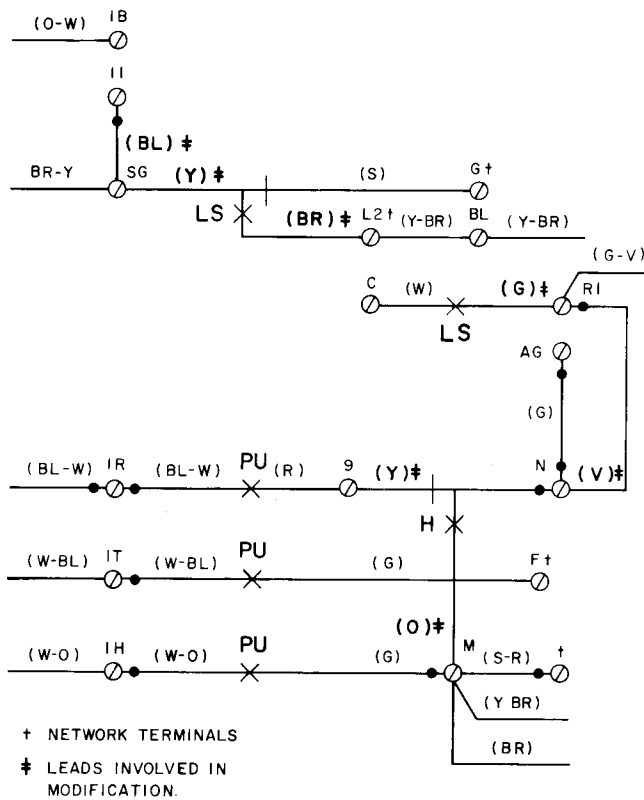


Fig. 2—Set Modified for 1A KTS

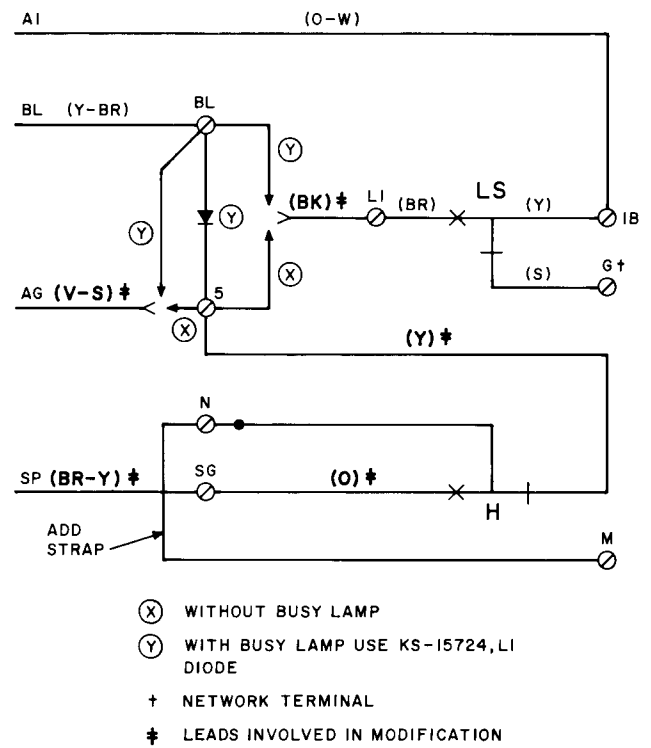


Fig. 4—Set Modified For I Hold

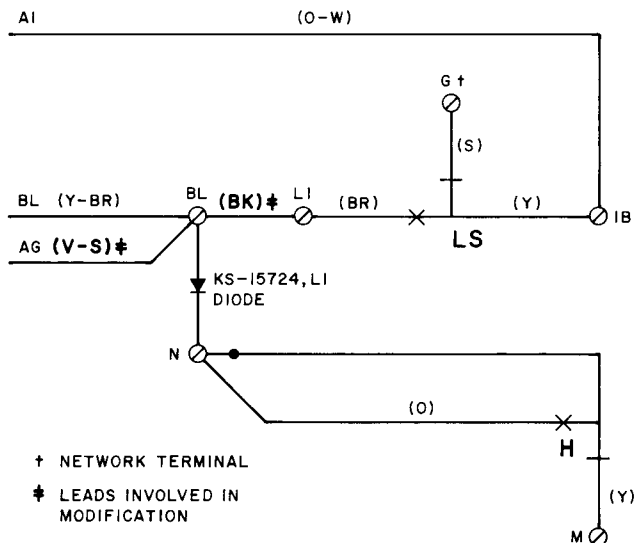


Fig. 3—Station Busy Lamp Circuit 1A1, 1A2 KTS

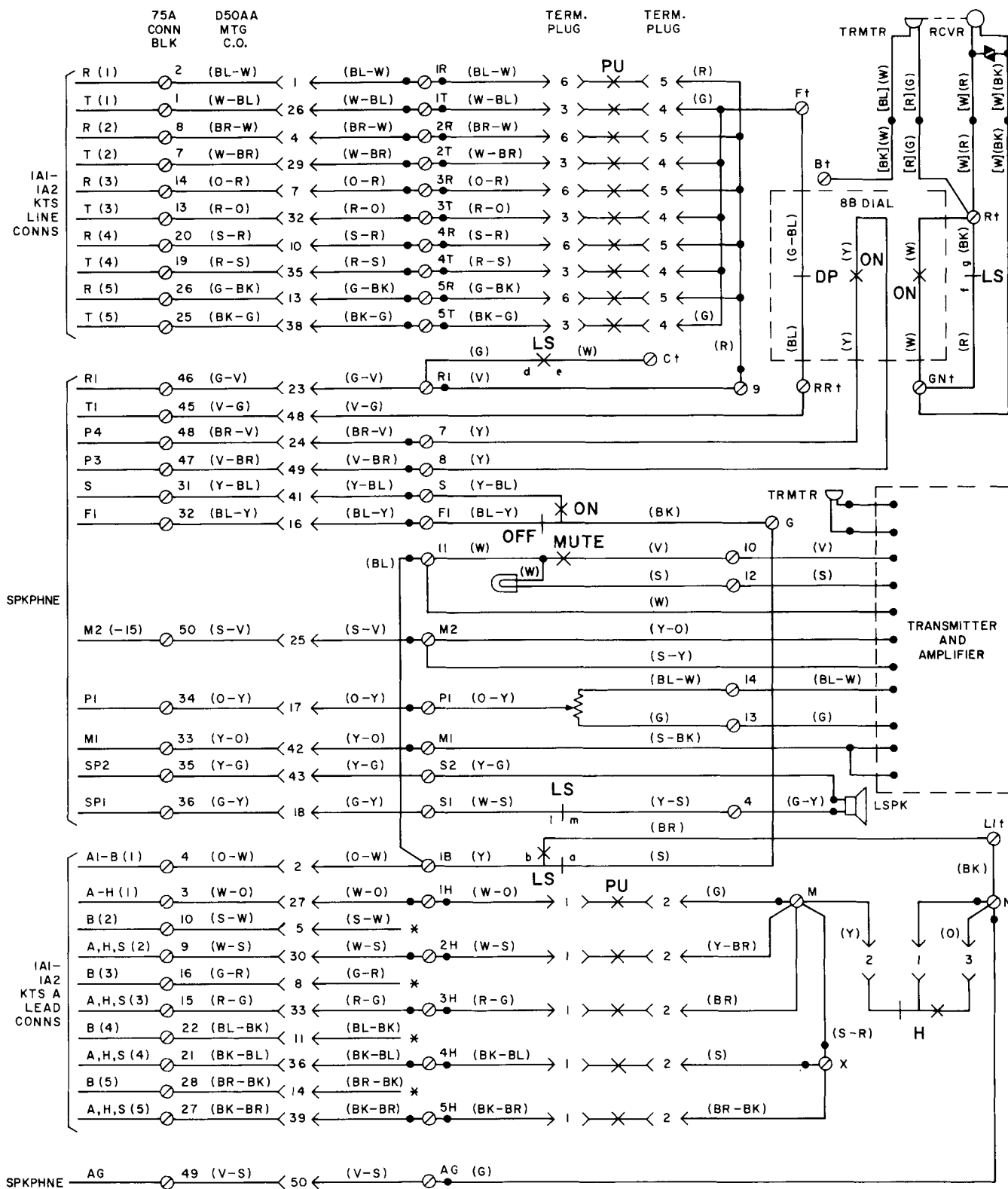


Fig. 5—752-Type Telephone Set, Connections (Sheet 1 of 2)

NOTES:

1. 75A CONN BLK SHOWN CONN CA MAY BE CONNECTED DIRECTLY INTO PLUG COLORS AND PIN NOS FOR CONN CABLE ARE SAME AS MTG CD.
2. IF CAP. IS NOT REQUIRED IN RINGER CKT, MOVE (R) RINGER LEAD TO TERM. A
3. AUX BUZZER MAY BE INSTALLED. USE SPARE LEADS AND TERMS. TO CONN TO EQUIP.
4. IF EXCLN FEATURE IS ADDED, CONVERT SWITCH LEADS PER TABLE B.
5. LINE SWITCH OFF-HOOK SEQUENCE AS FOLLOWS:

(1) c, b CLOS	(4) d, e CLOS
(2) a, b OPENS	(5) n, o OPENS
(3) l, m OPENS	(6) j, k CLOS
(7) f, g OPENS	

6. EARLY PRODUCTION SETS DIFFER AS FOLLOWS:

- A. LAMP LEADS ARE SOLDERED TO APPROPRIATE L AND LG TERMS. ON TERM. BOARD.
- B. SPARE TERMS. 3,5,6,2H,3R,3T,3H,4R,4H,5H AND T1 MAY BE EQUIPPED WITH SCREWS.
- C. KEY PLUG IDENT COLOR.

KEY PLUG	EARLY PROD	CURRENT PROD
HOLD	Y	PINK
1ST LINE	BL	BL
2ND LINE	BEIGE	O
3RD LINE	R	G
4TH LINE	GRAY	BR
5TH LINE	G	S

PU PICKUP KEY

LS LINE SWITCH

H HOLD KEY

DP DIAL PULSE

ON OFF NORMAL

* INSULATED AND STORED

† TERMINAL ON NETWORK

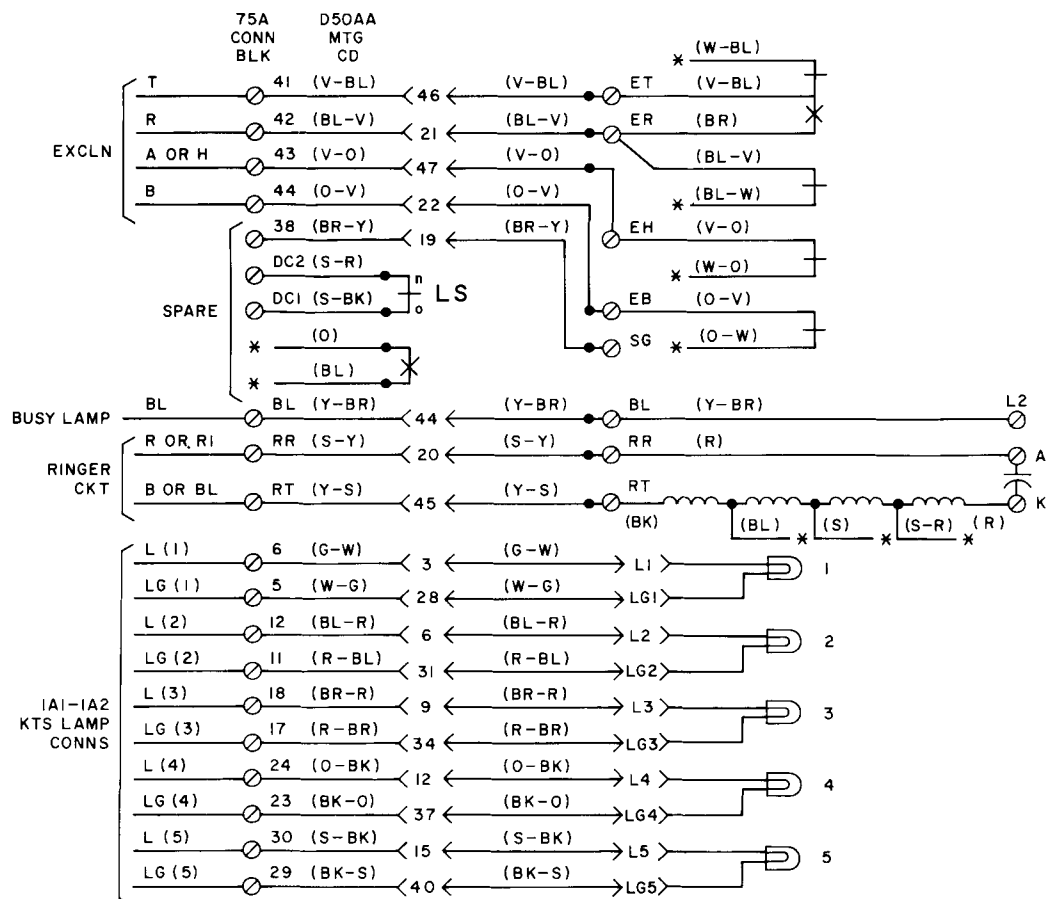
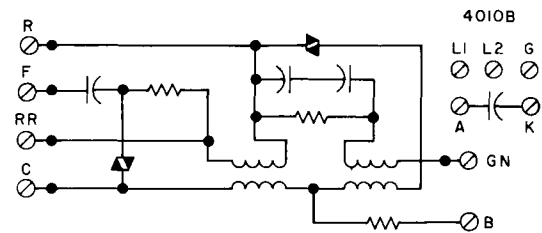


Fig. 5—752-Type Telephone Set, Connections (Sheet 2 of 2)