

## SERVICE

### 2500M TELEPHONE SETS

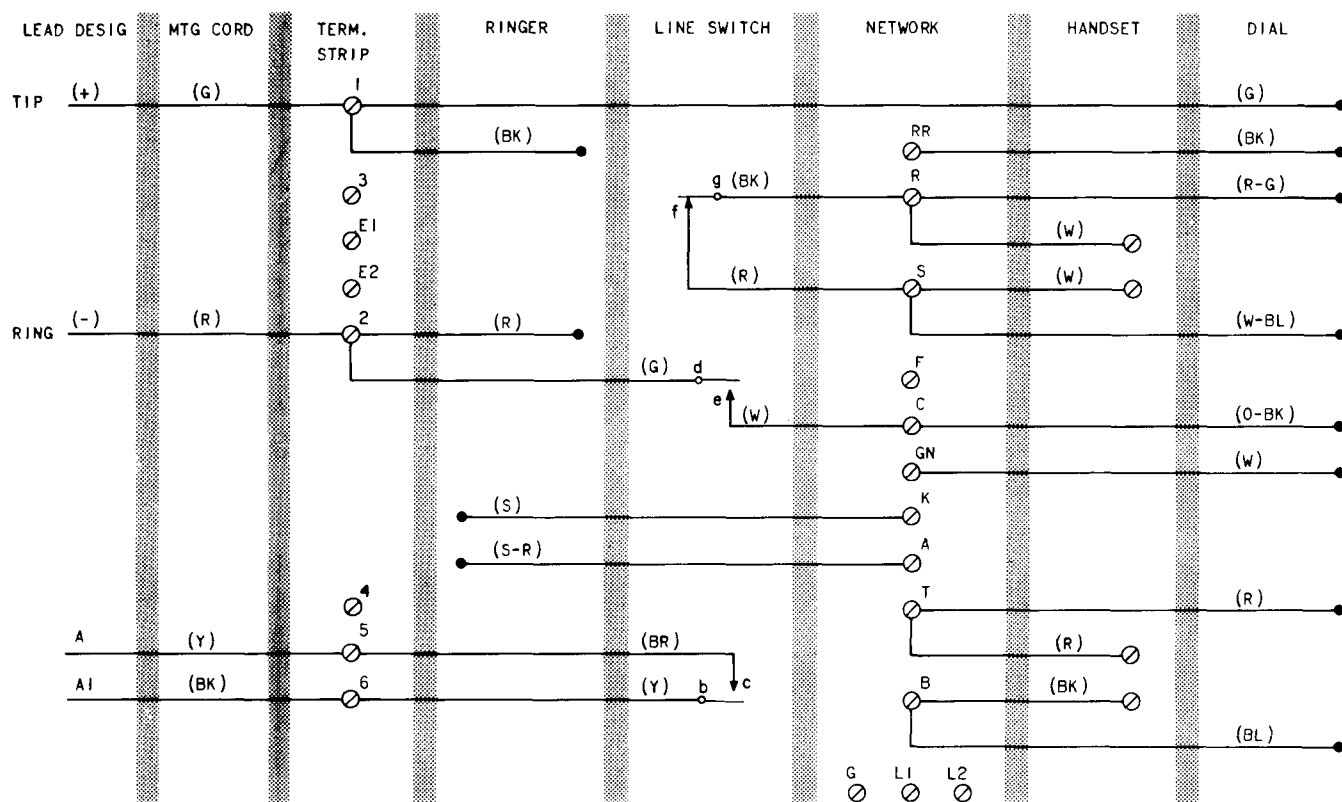


Fig. 1—2500M Telephone Set, Connections

**TABLE A**  
**LINE AND RINGER CONNECTIONS**

FEATURE (NOTE 1)	CONNECTIONS IN SET								MOUNTING CORD AT CONNECTING BLOCK					
	MOUNTING CORD						RINGER							
	G	R	Y	BK	BL	W	BK	R	G	R	Y	BK	BL	W
Separate Ringer	1	2	3	4			3	4	TIP	RING	R-R1	B-B1		
Separate Ringer and 1A1 or 1A2 KTS (Note 2)	1	2	5	6	3	4	3	4	TIP	RING	R-R1	B-B1	Y	BK

**Notes:** 1. Set is furnished wired for 1A1 or 1A2 KTS with bridged ringer.

2. Replace D4BJ mounting cord with D6AA.

**TABLE B**  
**P-90D052 POLARITY GUARD CONNECTIONS**

LEAD		REMOVE FROM	CONNECT TO
Line Switch	(W)	C(Net.)	S*
Dial	(BK)	RR(Net.)	T*
Polarity Guard	(W) (G)		C(Net.) RR(Net.)

\* Terminal on polarity guard.

**Note:** For use when specified by local instructions for end-to-end signaling installation.