

SERVICE

526A AND 526B TELEPHONE SETS

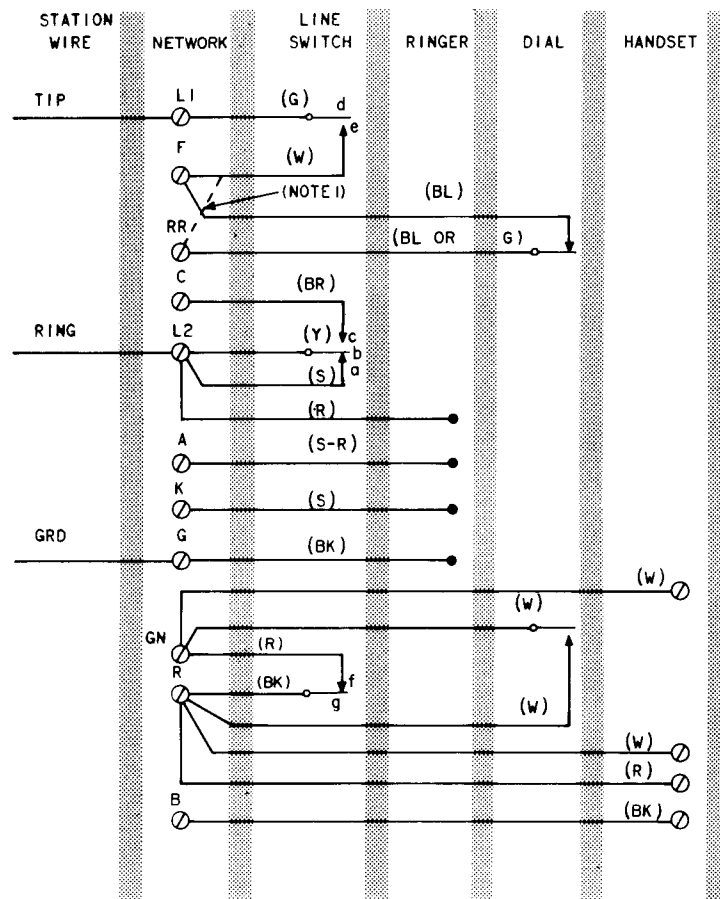


Fig. 1—526A and 526B Telephone Set, Connections

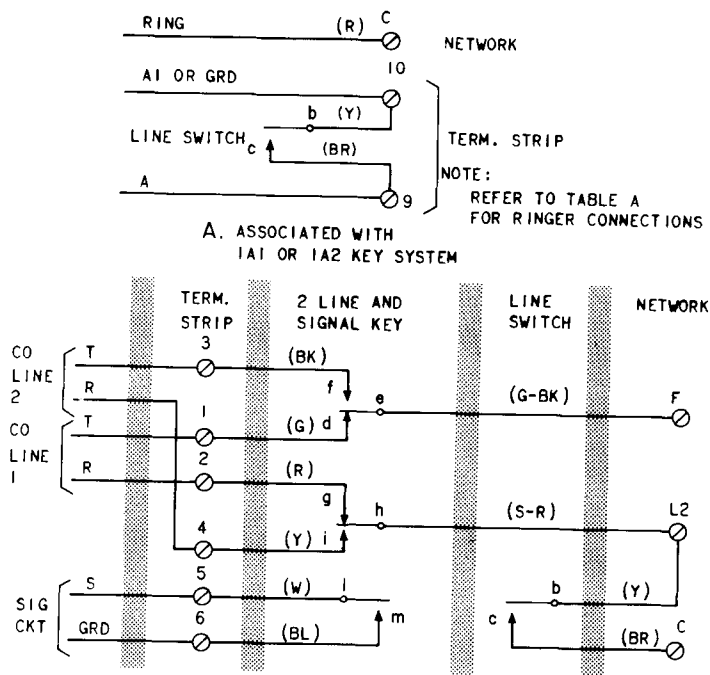
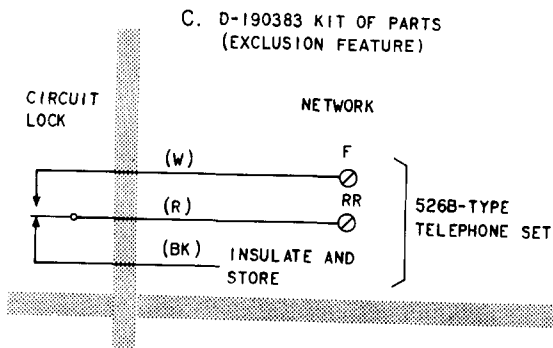
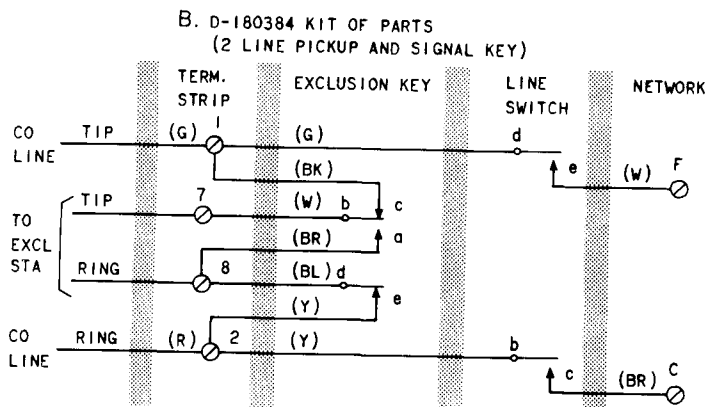


TABLE A
RINGER CONNECTIONS

WIRE OR LEAD	COLOR	INDIV. OR BRIDGED	TIP PARTY	TIP PARTY	
				IDENT. GROUND	
				1000Ω	2650Ω
Ringer Leads	(R)	L2*	L1	K	G
	(BK)	L1	G	G	K
	(S)	K	K	B	B
	(S-R)	A	A	B	B
Line Switch	(S)	L2	L2	A	A

*Terminate (R) ringer lead on C of network when associated with 1A1 or 1A2 key system.



NOTE:
CIRCUIT LOCK DISABLES DIAL AND RESTRICTS
TELEPHONE SET TO INCOMING CALLS.

D. D-180385 KIT OF PARTS
(ELECTRIC CIRCUIT LOCK)

Fig. 2—Optional Wiring Connections

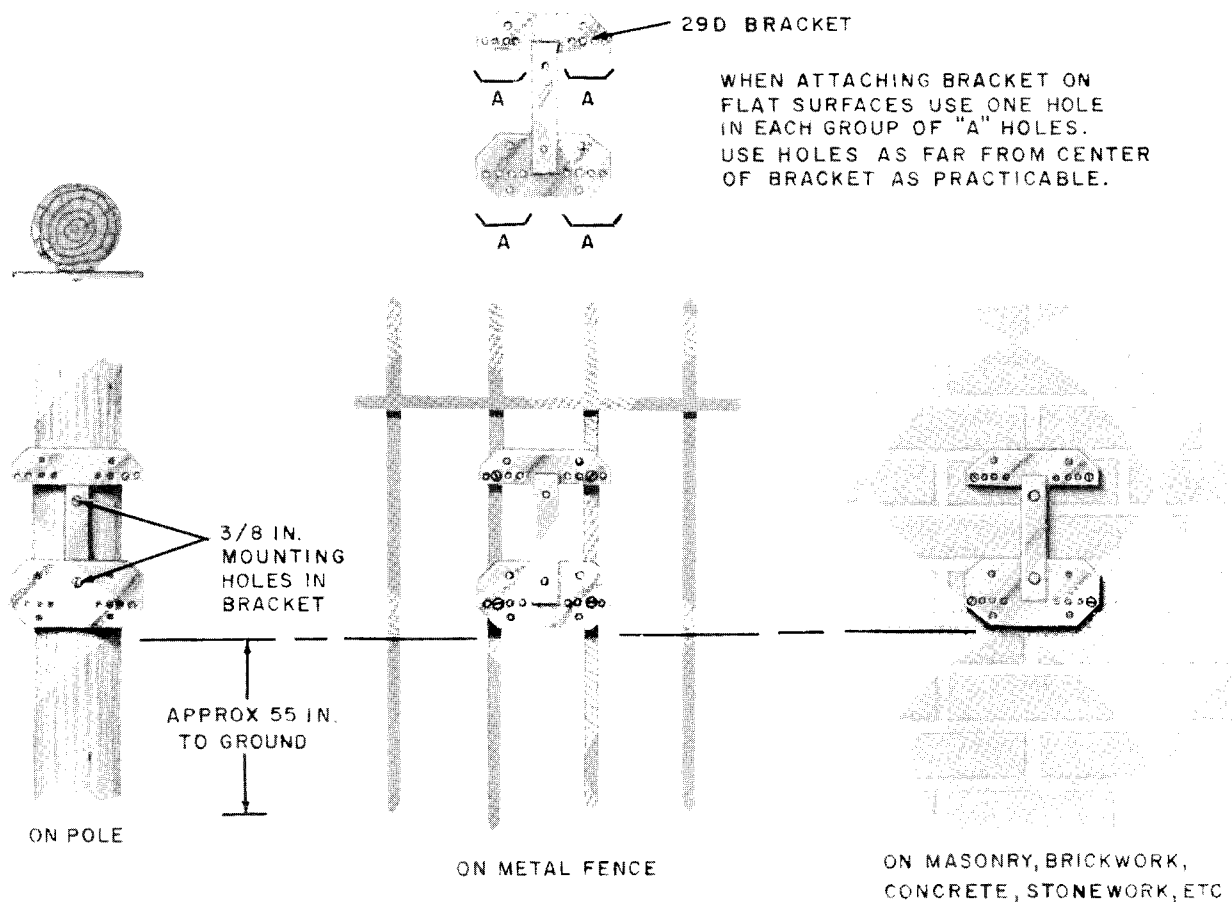


Fig. 3—29D Bracket Mounted on Various Surfaces

TABLE B
FASTENERS FOR 29D BRACKET

SURFACE	QUAN	FASTENERS
Wood	4	1-1/2 in. No. 14 RH galvanized wood screws
Wood poles	4	2-1/2 in. or longer No. 14 RH galvanized wood screws
Wood poles (where diameter of pole is 8 inches or less)	2	5/16 x 3 in. coach screws or 2-1/2 in. or longer No. 14 RH galvanized wood screws
Finished masonry, brickwork, concrete, etc	4	5/16 x 2-1/4 in. hammer drive anchors, or approved equivalent
Solid metal — metal fences, columns, etc*	4	1 x 5/16 in. No. 18 RH brass machine screws. Drill and tap holes using 17/24 in. drill and 5/16 in. No. 18 tap
Hollow tile, corrugated metal, plaster board, etc	4	1/4 x 4 in. RH toggle bolts

* Iron straps, bolts, etc may be used where local instructions permit. Attach telephone set securely.