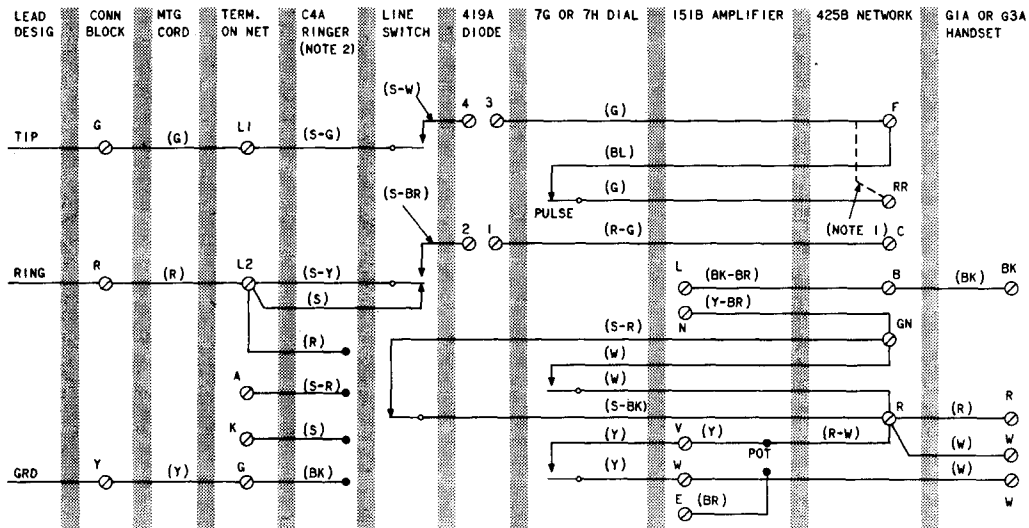


SERVICE

532A, B TELEPHONE SETS



NOTES:

1. GREEN DIODE LEAD IS CONNECTED TO F TERMINAL IN DIAL SET AND TO RR TERMINAL IN MANUAL SETS.
2. RING PARTY CONNECTIONS ARE SHOWN. SEE TABLE A FOR OTHER CLASS OF SERVICE CONNECTIONS.

Fig. 1—532A,B Telephone Set, Connections

TABLE A
LINE AND RINGER CONNECTIONS
532A, B TELEPHONE SETS

WIRE OR LEAD		INDIV OR BRIDGED	RING PARTY*	TIP PARTY IDENT	
				NORMAL CONNECTIONS	
				1000Ω	2650Ω
Ringer Leads (Note)	(R)	L2	L2	K	B
	(BK)	L1	G	G	B
	(S)	K	K	B	K
	(S-R)	A	A	B	G
Line Switch	S	L2	L2	A	A
Mtg Cord	Ring (R)	L2	L2	L1	L1
	Tip (G)	L1	L1	L2	L2
	Grd (Y)	G	G	G	G

* Reverse tip and ring for tip party service.

Note: To silence ringer for all classes of service except tip party identification, connect S and BK ringer leads on K terminal of network. To silence ringer for tip party identification disconnect the R and S-R ringer leads for 1000Ω and BK ringer lead for 2650Ω and insulate and store.