

## SERVICE

### 501F AND 501FM TELEPHONE SETS

#### 1. GENERAL

● Revise Table A.

##### 1.01 Reissued to:

- Add information on 501FM telephone sets,  
Fig. 2

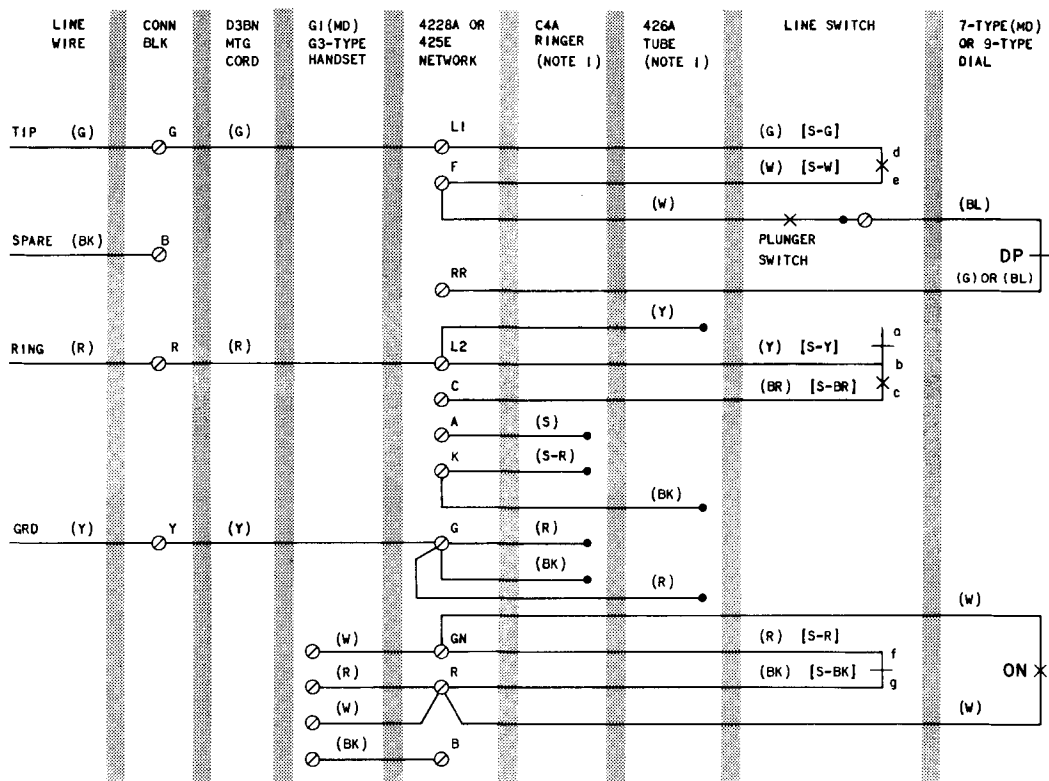
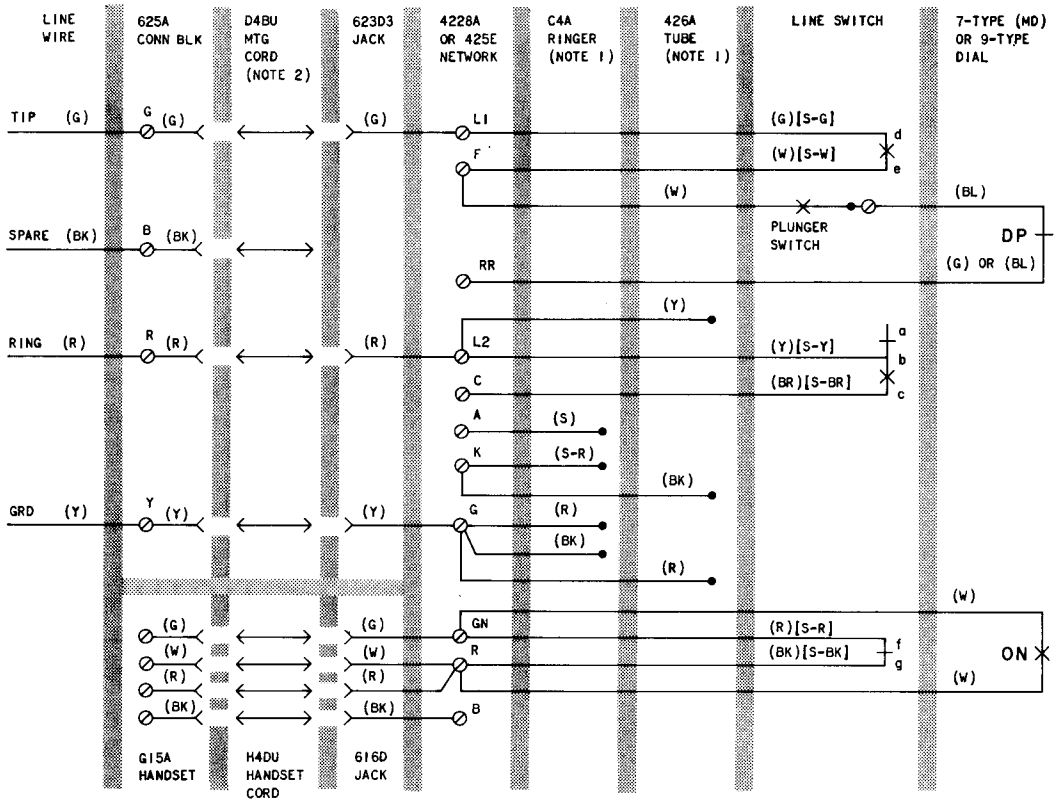


Fig. 1—501F Telephone Set, Connections



NOTES:

1. SET IS FACTORY WIRED FOR NEGATIVE RING PARTY FOR USE IN OFFICES WITHOUT ANI. FOR OTHER CLASSES OF SERVICE SEE TABLE A.
2. D4BU MOUNTING CORD AND H4DU HANDSET CORD ORDERED SEPARATELY.
3. LINE SWITCH SEQUENCE, HANDSET REMOVED.
  - (1) bc - MAKES (2) de - MAKES (3) gf - BREAKS
  - ( ) CURRENT COLOR CODE DP - DIAL PULSE CONTACT
  - [ ] MD COLOR CODE ON - DIAL OFF-NORMAL CONTACT

Fig. 2—501FM Telephone Set, Connections

♦TABLE A♦

**501F AND 501FM TELEPHONE SETS  
LINE, RINGER, AND TUBE CONNECTIONS**

TEL SET	WIRE OR LEAD	COLOR	NEGATIVE(-) PARTIES		POSITIVE (+) PARTIES	
			RING (1-5)	TIP (2-6)	RING (3-7)	TIP (4-8)
501F	Mtg Cord at Conn Block	R G Y	R G Y	G R Y	R G Y	G R Y
	Mtg Cord in Set	R G Y	L2 L1 G	L2 L1 G	L2 L1 G	L2 L1 G
501FM (Note 1)	623D3 Jack condr in set	R G Y	L2 L1 G	L1 L2 G	L2 L1 G	L1 L2 G
501F or 501FM	Ringer Leads (Note 2)	R BK S S-R	G G A K	G G A K	L2 L2 A K	L2 L2 A K
	426A Tube (3-element)	R BK Y	G K L2	G K L2	L2 K G	L2 K G

*Notes:*

1. Assignment of line wires at 625-type connecting block must remain as shown in Fig. 2 for all classes of service. This permits changes in party assignment without the necessity of altering line wire terminations at the connecting block.
2. To permanently silence ringer, disconnect (R) ringer lead; insulate and store.