

SERVICE

754-TYPE TELEPHONE SETS

1. GENERAL

1.01 This section contains maintenance and connection information for the 754-type telephone set when used with 1A, 1A1, or 1A2 key telephone systems.

1.02 This section is reissued to:

- Add lamp replacement information for 635-type key
- Remove J, K line switch contacts
- Add P1B ringer

2. MAINTENANCE

2.01 Work done on customer's premises should be limited to replacement of accessible parts which are available through supply channels. Refer to ordering guide tables in the Reference section.

2.02 Ringers, handsets, dials, etc. used in these sets should be maintained in accordance with section covering the particular item.

Note: On the P1-type ringer, with the volume control lever in the extreme low position, it shall not be necessary for the clapper to strike the gong as long as the armature is vibrating.

Mat

2.03 The vinyl-faced mat may be cleaned with a water-dampened KS-2423 or equivalent cloth. Replace defective mat as follows:

- (1) Grasp mat retainer frame at top, lift upward and out to release frame from panel of set.
- (2) Remove handset from hook of set.
- (3) Pull out handset cord to allow working slack.

- (4) Remove mat from face of panel.
- (5) Remove grommet from mat as shown in Fig. 1.
- (6) Install grommet in new mat by reversing procedure used in removal.
- (7) Position mat on panel and secure using the mat retainer frame.

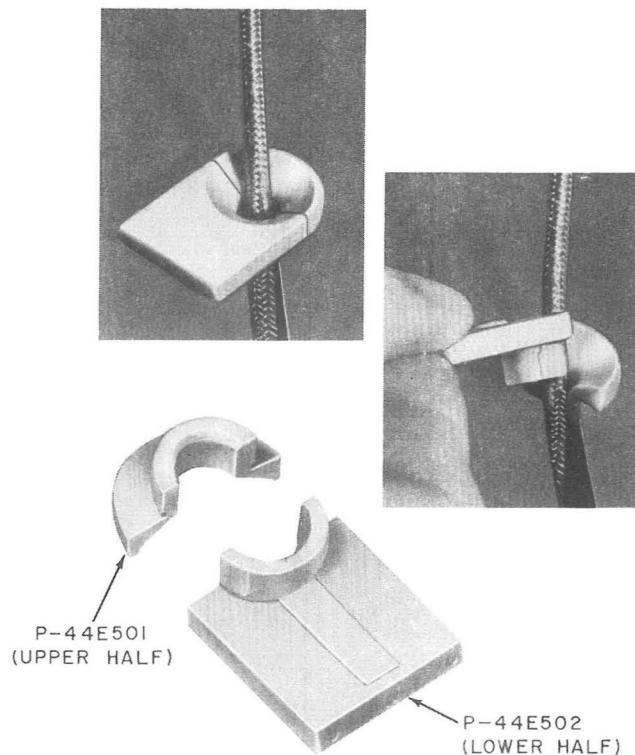


Fig. 1—Removal of Handset Cord Grommet

3-Type Cord Reel

2.04 To test the cord reel, pull the handset cord out to its maximum length. With the cord maintained perpendicular to the panel, the cord

should retract fully. Any twists in the cord should be removed before making test.

- 2.05** Replace the cord reel if the cord will not retract or if the cord is frayed, kinked, or noisy. Field maintenance of the cord reel, or replacement of the cord, is not recommended.

Note: ♦ When replacing the cord reel use either the 3A or 3B when telephone set is not subjected to temperatures below 40 degrees F. Below 40 degrees F only the 3A cord should be used.♦

Line Switch Assembly

- 2.06** The line switch assembly should operate without binding or squeaking throughout its

entire travel. Squeaking may be eliminated by cleaning the spring anchor points and shaft bearing points with KS-7860 petroleum spirits; after cleaning, lubricate with No. 2 or softer graphite pencil.

- 2.07** Replace line switch assembly if it binds or sticks or if electrical trouble is encountered in the contact assembly.

♦ Lamp Replacement

- 2.08** The current production 635-type keys have been modified for easy lamp replacement by merely removing the lamp cap and inserting a 553-type tool through the hole in the top of the button. In early production keys it was necessary to remove faceplate, key collar, and button for lamp replacement.♦

TABLE A
PICKUP-SIGNAL KEY CONVERSION

KEY TELEPHONE SET	CONVERSION OPTIONS	635A2 OR 635A5 KEY LEADS			STRAP
		(Y-BR)	(BR)	(BR-BK)	(S-R)
754A and 754B	HPPPPP	M	M	X	M
	HPPPPS	M	M	SG	M
	HPPPSS	M	M	X	SG
	HPSSSS	M	X	X	SG
	HPPPP*S*	M	M	N	5H
	HPPP*P*S*	M	X	N	5H
	HPP*P*P*S*	X	X	N	5H

* These pickup key options are used on private or intercommunicating lines with the signal key common. The signal key, under control of the line switch, will operate the signal circuit of each line when the associated pickup key is depressed. Use S lead on 2nd, 3rd, or 4th pickup key as required.

TABLE B
CONNECTIONS FOR LINE EXCLUSION

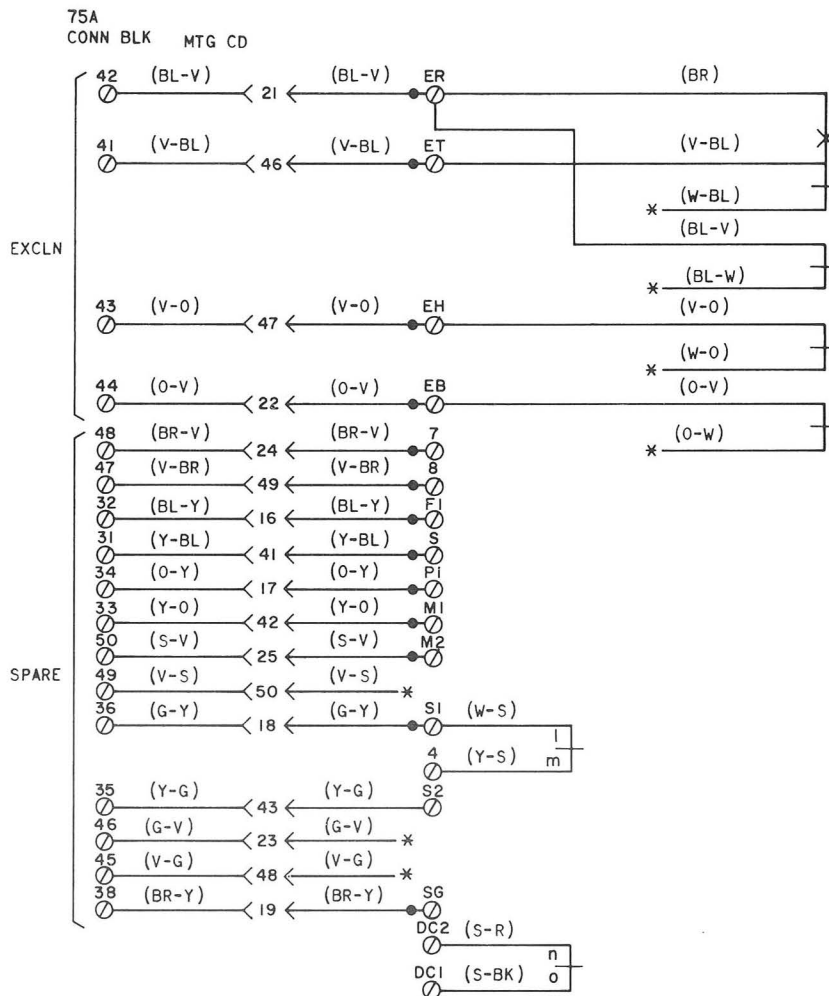
EXCLUSION	KEY TELEPHONE SYSTEM	EXCLUSION KEY LEADS							
		(BL-W)	(W-BL)	(O-W)	(W-O)	(V-BL)	(BL-V)	(V-O)	(O-V)
On any Line	1A	R*	T*	1B†	H*	ET	ER	EH	EB
	1A1 or 1A2	R*	T*	‡	H*	ET	ER	EH	EB

* Terminal of line involved.

† Individually insulated and stored.

‡ See Note, Fig. 3.





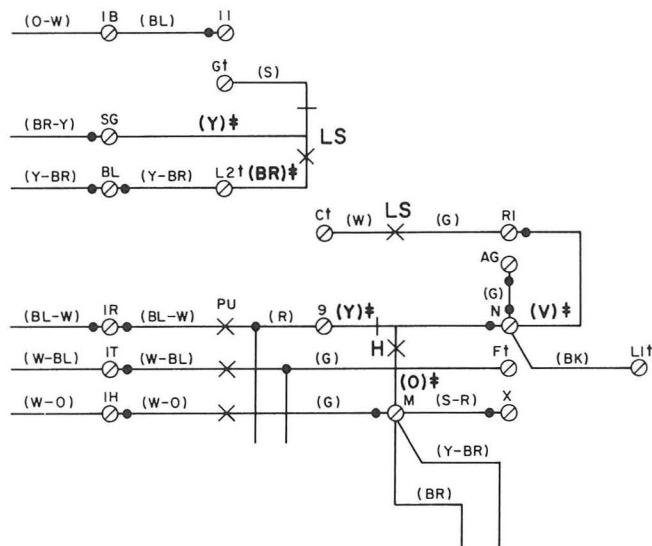
NOTES:

- 75A CONN BLK SHOWN. CONN CABLE MAY BE CONNECTED DIRECTLY INTO PLUG. COLORS AND PIN NUMBERS FOR CONN CABLE ARE SAME AS MTG CORD.
- IF CAP. IS NOT REQUIRED IN RINGER CIRCUIT, MOVE (R) RINGER LEAD TO TERM. A.
- AUXILIARY BUZZER MAY BE INSTALLED. USE SPARE LEADS AND TERMINALS TO CONNECT EQUIPMENT.
- IF EXCLN FEATURE IS ADDED, CONNECT SWITCH LEADS PER TABLE B.
- LINE SWITCH OFF-HOOK SEQUENCE AS FOLLOWS:
 - bc MAKES
 - de MAKES
 - ab BREAKS
 - fg, lm, no — BREAKS
- STAND. COLOR CODE FOR THE TERM. PLUG IS AS FOLLOWS:
 - BL - 1ST LINE PICKUP KEY
 - O - 2ND LINE PICKUP KEY
 - G - 3RD LINE PICKUP OR SIGNAL KEY
 - BR - 4TH LINE PICKUP OR SIGNAL KEY
 - S - 5TH LINE PICKUP OR SIGNAL KEY
 - PINK - HOLD KEY

- CONNECTIONS FOR PIB RINGER SHOWN. CONNECTIONS FOR PIA SAME AS PIB EXCEPT UNUSED RINGER LEADS ARE INSULATED AND STORED.

[] 3A CORD REEL
 () 3B CORD REEL
 DP DIAL PULSE
 H HOLD KEY
 LS LINE SWITCH
 ON OFF NORMAL
 PU PICKUP KEY
 * INSULATED AND STORED
 † NETWORK TERMINAL-UNDESIGNATED TERMINALS ARE ON SET TERMINAL BOARD

Fig. 2—754-Type Telephone Set, Connections (Sheet 2 of 2)



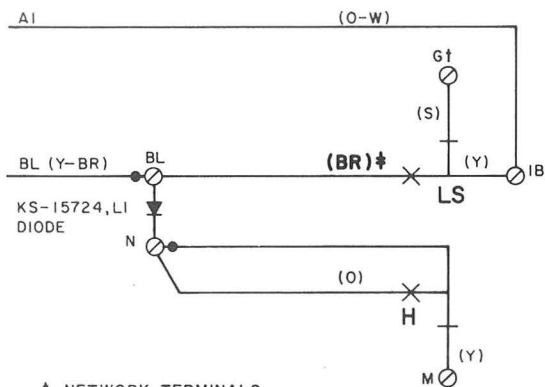
NOTE

WITH 1A KTS WHEN OTHER THAN LINE 1 IS EXCLUDED, REMOVE O-W CORD COND FROM TERM. IB, INSULATE AND STORE. CONNECT BALANCE LEAD CORD COND OF LINE INVOLVED TO TERM. IB.

† NETWORK TERMINALS

‡ LEADS INVOLVED IN MODIFICATION

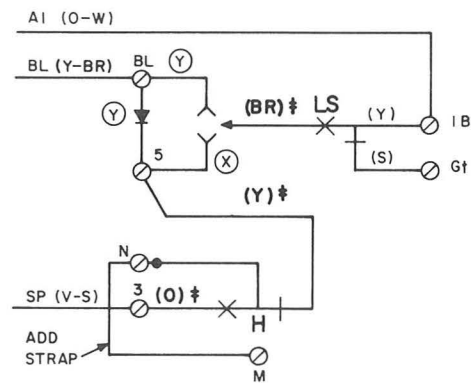
Fig. 3—Set Modified For 1A KTS



† NETWORK TERMINALS

‡ LEADS INVOLVED IN MODIFICATION

Fig. 4—Station Busy Lamp Circuit 1A1 or 1A2 KTS



NOTE:

‡ LEAD INVOLVED IN MODIFICATION

(X) WITHOUT BUSY LAMP

(Y) WITH BUSY LAMP USE KS-15724, LI DIODE

† NETWORK TERMINALS

Fig. 5—Set Modified for 1 Hold