

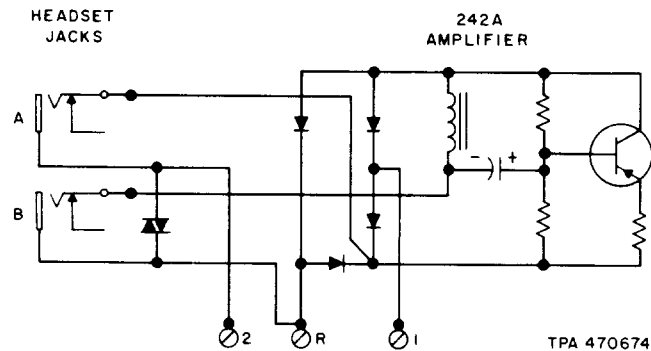
## SERVICE

### 663-TYPE TELEPHONE SETS

#### 1. GENERAL

**1.01** These sets are supplied factory wired with a 242-type amplifier to provide for headset operation. A head telephone set must be ordered separately. For ordering and installation information refer to the appropriate Reference section in Division 502.

**1.02** Reissued to add C4B ringer furnished in current production 663-type telephone sets.



**Fig. 1—242A Amplifier connections—663A1 Telephone Set**

**TABLE A**

**AMPLIFIER CONNECTIONS — 663A1 TELEPHONE SET**

LEAD	242A AMPLIFIER	242B AMPLIFIER*
V-G	R	2
G-V	2	T
O-V	1	1
R	2	2
S	R	T
BK	2	2

\* Place P-29E318 strap or equivalent between R and T terminals of amplifier.

TABLE B

## LINE AND RINGER CONNECTIONS — 663A1 TELEPHONE SET

WIRE OR LEAD			INDIV OR BRIDGED	RING PARTY	TIP PARTY		
					NO IDENT GROUND	IDENT GROUND ¶	
						1000Ω	2650Ω
Line Wire	Tip	Connecting Block	1	1	1	1	1
	Ring		2	2	2	2	2
	Grd A1		5*	5	5	5	5
	A		4	4	4	4	4
Mounting Cord	G	Connecting Block	1	1	1	1	1
	R		2	2	2	2	2
	Y		4	4	4	4	4
	BK		5	5	5	5	5
Mounting Cord in Set	G	TB1	2	2	2	2	2
	R		C†	C†	C†	F†	F†
	Y		1	1	1	1	1
	BK		3	3	3	3	3
Ringer Leads	R	TB2	7 ¶ or 9	7 ¶ or 9	7 ¶ or 9	7	7
	BK		8	8	8	8	8
	S ¶		9	9	9	9	9
	S-R ¶		10	10	10	9	9
Ringer Straps	R	Net.	C	C	2‡	K	3‡
	BK		2‡	3‡	3‡	3‡	K
	S		K	K	K	B	B
	S-R ¶		A	A	A	B§	B§
Key Assembly Leads	S-V		F	F	F	C	C

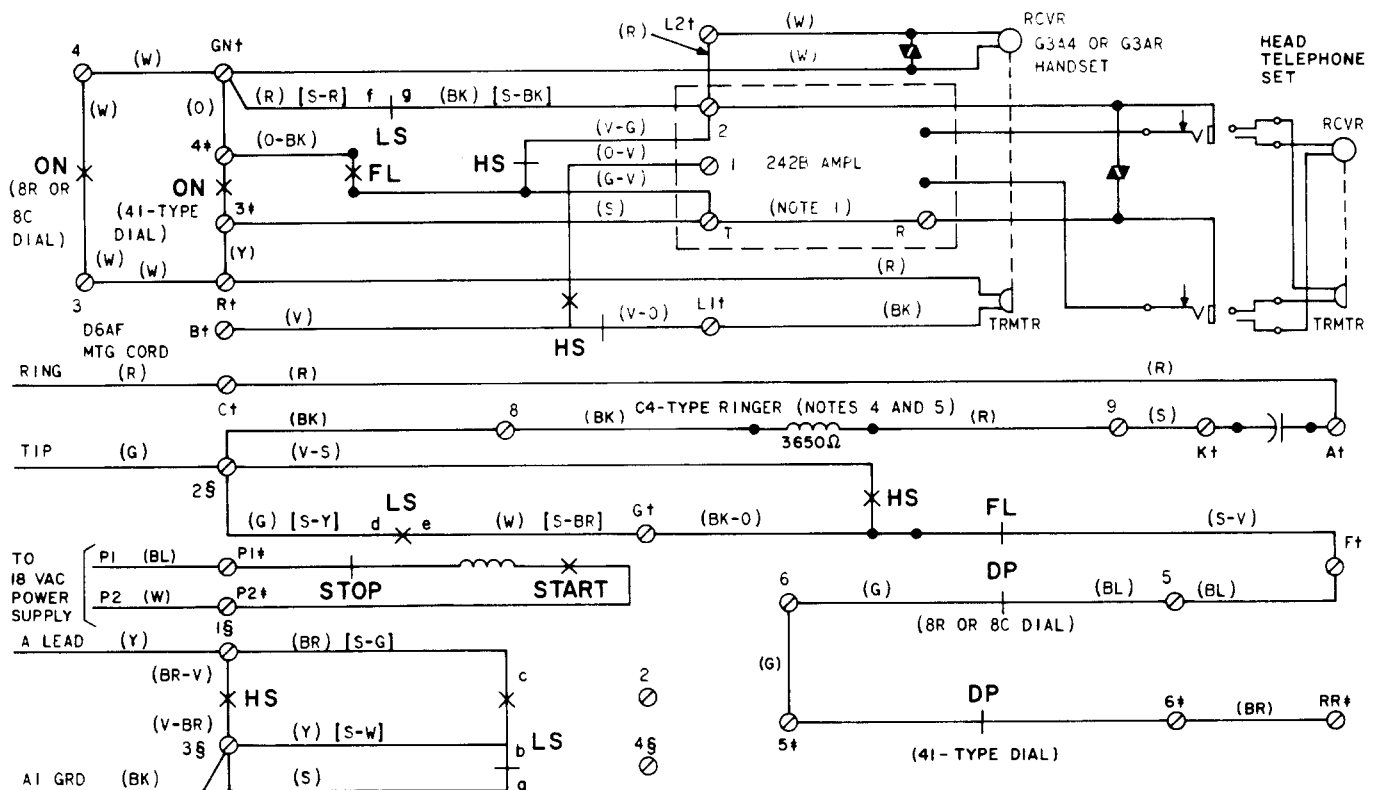
\* Ground may be omitted if not required for service. Not required for protection of 41-type dial power supply.

† Network terminal.

‡ TB1.

§ Place M1W cord or equivalent from A of network to 2 of TB1.

¶ C4A ringer only



## NOTES:

1. P-29E318 STRAP.
2. ON EARLIER MANUFACTURED SETS, AT TB2:  
(A) TERMINALS 2, 5, AND 6 WERE DESIGNATED 6, 2 AND 5 RESPECTIVELY  
(B) (S-V) FROM KEY ASSEMBLY WAS TERMINATED WITH (BL) DIAL LEAD AND (BL) STRAP AT TB2
3. OFF-NORMAL CONTACTS AND ASSOCIATED (Y) LEADS ARE ON 8C DIAL ONLY.
4. CONNECTIONS FOR C4B RINGER SHOWN. REFER TO TABLE B FOR LINE AND RINGER CONNECTIONS. IF C4A RINGER IS USED WIRE AS FOLLOWS:  
(BK) RINGER LEAD TO 8 OF TB2  
(R) RINGER LEAD TO 7 OF TB2  
(S) RINGER LEAD TO 9 OF TB2  
(S-R) RINGER LEAD TO 10 OF TB2  
(S) STRAP BETWEEN 9 OF TB2 AND K OF NETWORK  
(S-R) STRAP BETWEEN 10 OF TB2 AND A OF NETWORK  
C4A RINGER MUST BE USED FOR TIP PARTY IDENTIFICATION. REFER TO TABLE B.
5. TO SILENCE RINGER PERMANENTLY MOVE (BK) RINGER LEAD TO TERMINAL 9 OF TB2.
6. LINE SWITCH SEQUENCE:  
bc - MAKES ab - BREAKS  
de - MAKES fg - BREAKS

† - NETWORK TERMINAL, UNDESIGNATED TERMINALS ARE ON TB2

‡ - TERMINAL ON 41 - TYPE DIAL

§ - TERMINAL ON TB1

( ) - CURRENT COLOR CODE

[ ] - MD COLOR CODE

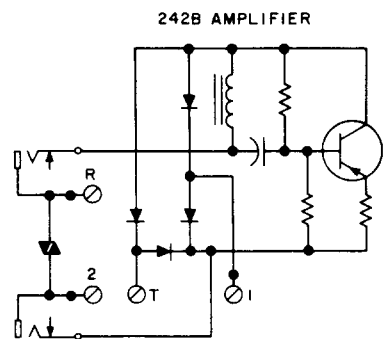
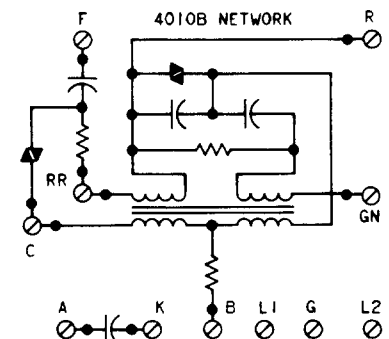
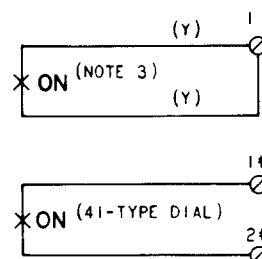
DP - DIAL PULSE CONTACTS

FL - FLASH KEY

HS - HEADSET ON-OFF KEY

LS - LINE SWITCH

ON - DIAL OFF-NORMAL CONTACTS



TPA 505522

Fig. 2—663A1 Telephone Set, Connections