

TERMINALS—INSIDE WIRING IDENTIFICATION

1.00 INTRODUCTION

This section provides descriptive information on G- and HS-type terminals. Dimensions and capacities of the terminals are listed as an aid in selecting the proper type.

2.00 GENERAL

2.01 The terminals illustrated in the following figures should be used in conjunction with inside wire and inside wiring cable in distribution systems normally placed by installers.

2.02 These terminals are also used in conjunction with G-type binding post chambers placed by the construction force.

3.00 GA-TYPE CABLE TERMINAL BOX

The GA-type cable terminal box (shown in Fig. 1) is a sheet metal housing having an olive-green finish. It accommodates 102-type adapters and 30- or 31-type connecting blocks. The GA-type cable terminal box comes equipped with one No. 8A distributing ring, washer and screw used to secure the ring, and 1/4-inch No. 8-32 machine screws to mount the 102-type adapter.

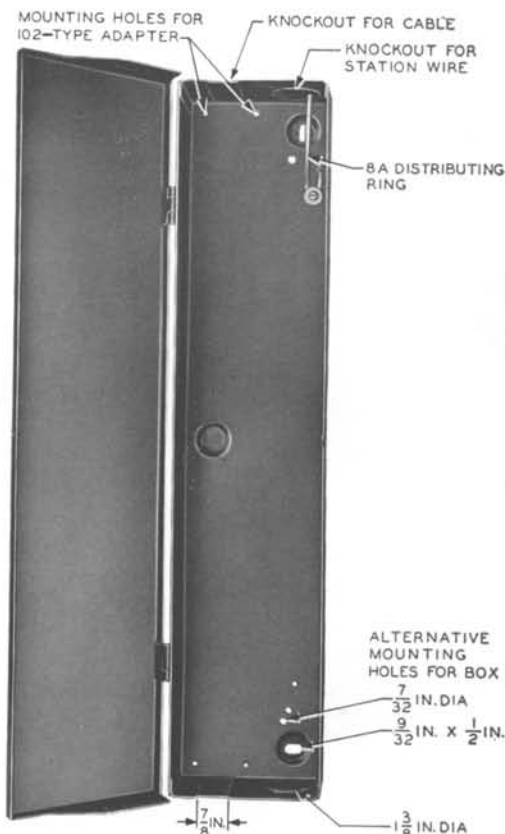


FIG. 1—GA-TYPE CABLE TERMINAL BOX

TABLE A

| Box | Over-all Dimensions, GA-Type Cable Terminal Box, Inches | | |
|-------|--|-------|--------|
| | Height | Width | Depth |
| GA-11 | 10-3/16 | 4-1/2 | 2-9/16 |
| GA-16 | 13-5/16 | 4-1/2 | 2-9/16 |
| GA-26 | 19-9/16 | 4-1/2 | 2-9/16 |

TABLE B

| Box | Capacity, GA-Type Cable Terminal Box | | |
|-------|---|------------------|---------|
| | Pairs | Connecting Block | Adapter |
| GA-11 | 11 | 30B or 31B | 102-B |
| GA-16 | 16 | 30C or 31C | 102-C |
| GA-26 | 26 | 30D or 31D | 102-D |

4.00 GB-TYPE CABLE TERMINAL BOX

The GB-type cable terminal box (shown in Fig. 2) is similar to the GA-type cable terminal box in appearance and in the terminating equipment which it will accommodate. However, it is wider and is equipped with two No. 8A distributing rings and a fanning strip which may be used to identify the location of the station wires. The GB-type box is also equipped with 1/4-inch No. 8-32 machine screws to mount the 102-type adapters.

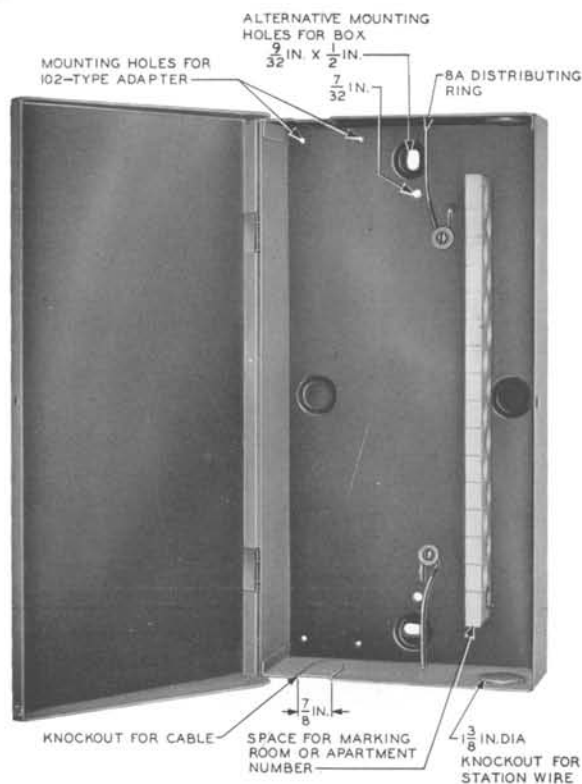


FIG. 2—GB-TYPE CABLE TERMINAL BOX

TABLE C

| Box | Over-all Dimensions, GB-Type Cable Terminal Box, Inches | | |
|-------|--|-------|--------|
| | Height | Width | Depth |
| GB-11 | 10-3/16 | 6-7/8 | 2-9/16 |
| GB-16 | 13-5/16 | 6-7/8 | 2-9/16 |
| GB-26 | 19-9/16 | 7-3/8 | 2-9/16 |

TABLE D

| Box | Capacity, GB-Type Cable Terminal Box | | |
|-------|---|------------------|---------|
| | Pairs | Connecting Block | Adapter |
| GB-11 | 11 | 30B or 31B | 102-B |
| GB-16 | 16 | 30C or 31C | 102-C |
| GB-26 | 26 | 30D or 31D | 102-D |

5.00 GC-TYPE CABLE TERMINAL BOX

The GC-type cable terminal box (shown in Fig. 3) is available in three sizes and is generally used where it is desired to mount two 102-type adapters and two 30- or 31-type connecting blocks. One 8A distributing ring with mounting screw and washer is furnished with each terminal. Also, 1/4-inch No. 8-32 machine screws to mount the 102-type adapters are furnished.

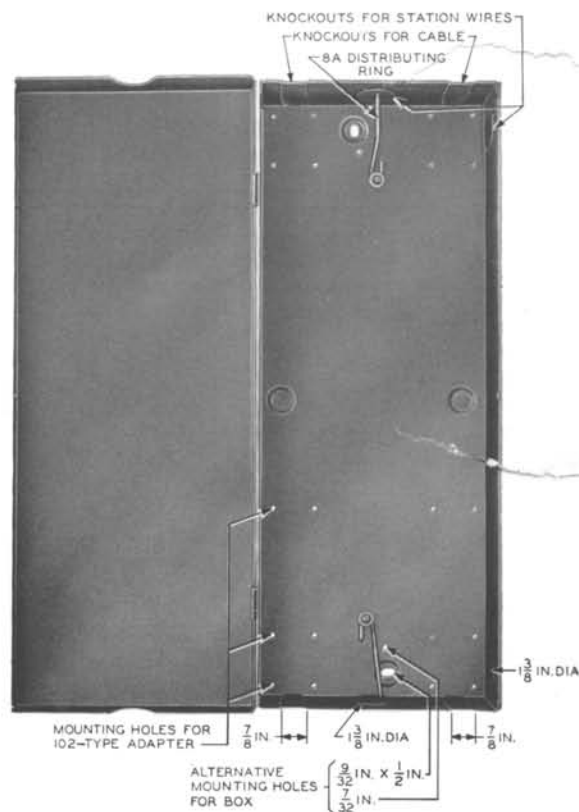


FIG. 3—GC-TYPE CABLE TERMINAL BOX

TABLE E

| Box | Over-all Dimensions, GC-Type Cable Terminal Box, Inches | | |
|--------|--|---------|-------|
| | Height | Width | Depth |
| GC-32 | 15-1/16 | 8-9/16 | 2-5/8 |
| GC-52 | 21-5/16 | 8-9/16 | 2-5/8 |
| GC-102 | 21-5/16 | 12-5/16 | 2-5/8 |

TABLE F

| Box | Capacity, GC-Type Cable Terminal Box | | | | |
|--------|---|------------------|--------------------------|----------|----------------|
| | Pairs | Connecting Block | | Adapter | |
| | | Quantity | Code | Quantity | Code |
| GC-32 | 32 | 2 | 30B or 31B 30C or 31C | 2 | 102-B 102-C |
| GC-52 | 52 | 2 | 30C or 31C 30D or 31D | 2 | 102-C 102-D |
| GC-102 | 52 | 2 | 30D or 31D | 2 | 102-D |

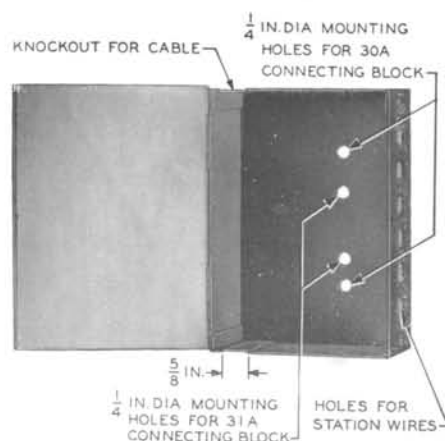


FIG. 4—HS-6 CABLE TERMINAL BOX

TABLE G

| Box | Over-all Dimensions, HS-Type Cable Terminal Box, Inches | | |
|------|--|-------|-------|
| | Height | Width | Depth |
| HS-6 | 5 | 3-3/4 | 1-3/4 |

TABLE H

| Box | Capacity, HS-6 Cable Terminal Box | |
|------|--------------------------------------|------------------|
| | Pairs | Connecting Block |
| HS-6 | 6 | 30A or 31A |

6.00 HS-6 CABLE TERMINAL BOX

The HS-6 cable terminal box (shown in Fig. 4) has a sheet metal housing having a black finish and is designed to accommodate a 30A or 31A connecting block. The connecting block is attached by means of the anchoring devices used for mounting the box. The inside surface of the cover is finished with flat white paint to provide a suitable surface for cable pair markings, etc.