

MODELS 184130 AND 183091 NETWORKS

| CONTENTS | PAGE |
|------------------------------|-------------|
| 1. INTRODUCTION | 1 |
| 2. GENERAL DESCRIPTION | 1 |
| MODEL 184130 | 1 |
| MODEL 183091 | 1 |
| 3. REMOVAL | 1 |
| 4. DISASSEMBLY | 4 |
| 5. REPLACEMENT PARTS | 4 |
| 6. INSTALLATION | 4 |

1. INTRODUCTION

1.01 This document covers the Models 184130 and 183091 networks. (See Figure 1.) A general description as well as information on removal, disassembly, replacement parts, and installation is included.

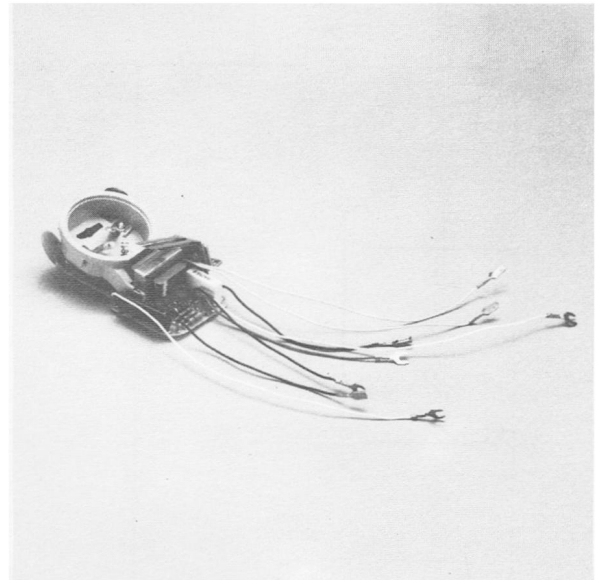
1.02 Whenever this section is reissued, reason for reissue will be listed in this paragraph.

1.03 For information concerning telephones that these networks are used in, refer to the appropriate section in Volume 1 of the ITT Telephone Apparatus Practices Manual.

2. GENERAL DESCRIPTION

2.01 The Models 184130 and 183091 network assemblies provide all the components necessary to connect and to match the impedance of the Trendline rotary dial handset transmitter and receiver units to a four-wire telephone handset cord. The network includes an RF filter, a sidetone balancing circuit, a recall switch, a transmitter cup assembly, and an Automatic Number Identification (ANI) circuit. (See Figures 2 and 3.)

2.02 The networks are printed circuit assemblies. All components are assembled on a printed circuit board (PCB). (See Figure 4.) The networks are designed for the handset of the rotary dial Trendline telephone. The networks mount in the handset over the transmitter and recall button.



AW 84-878

Figure 1: Models 184130 and 183091 Networks

MODEL 184130

2.03 The Model 184130 network is used in the rotary dial Trendline telephones with modular handsets.

MODEL 183091

2.04 The Model 183091 network is used in the rotary dial Trendline telephones with non-modular handsets.

2.05 The networks are available in only one style and have no identification other than a PCB part number etched on the PCB. Refer to ordering information in Table A.

3. REMOVAL

3.01 To remove the network from the telephone, proceed as follows:

- (a) Remove the number card retainer, number card, and light shield from the telephone handset; use a paper clip or similar instrument to pry the card retainer from the handset. (See Figure 5.)

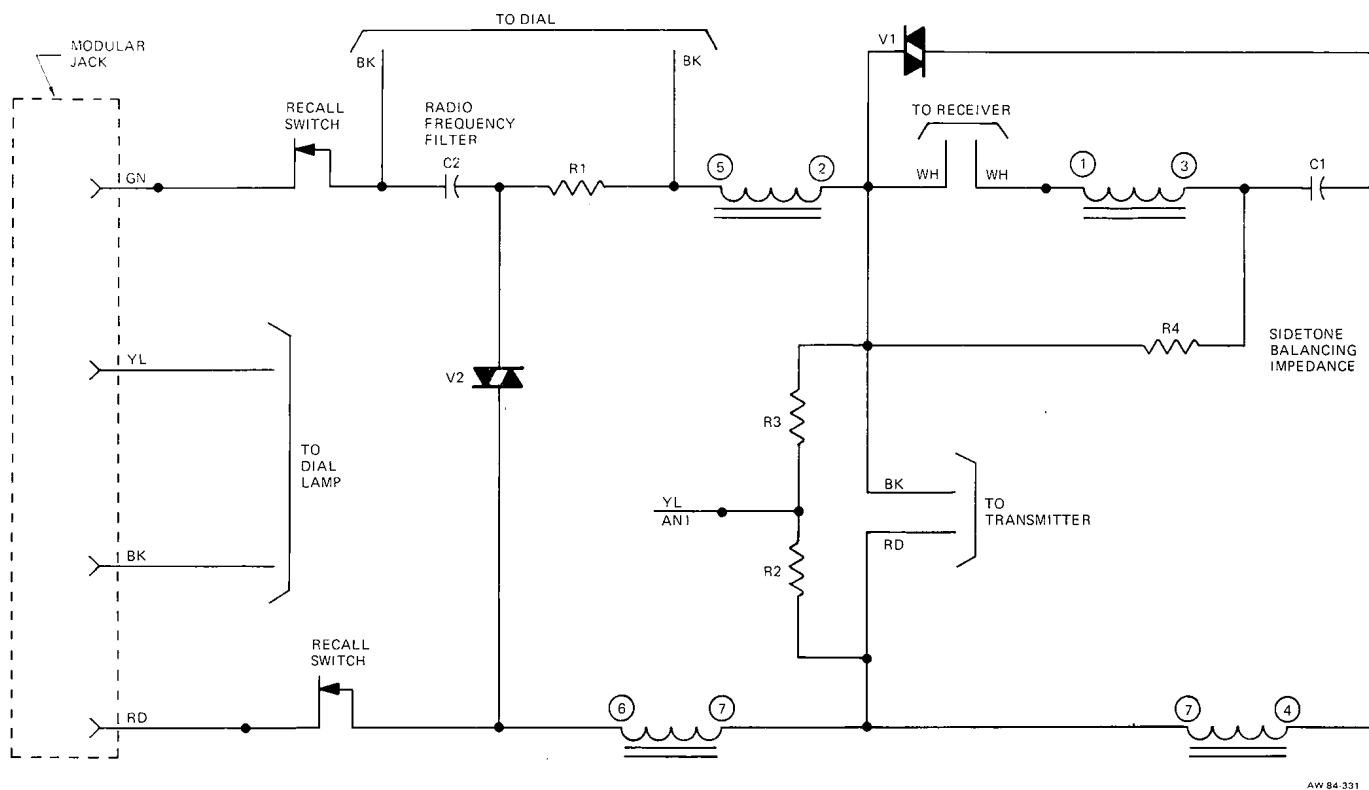


Figure 2: Model 184130 Network, Schematic

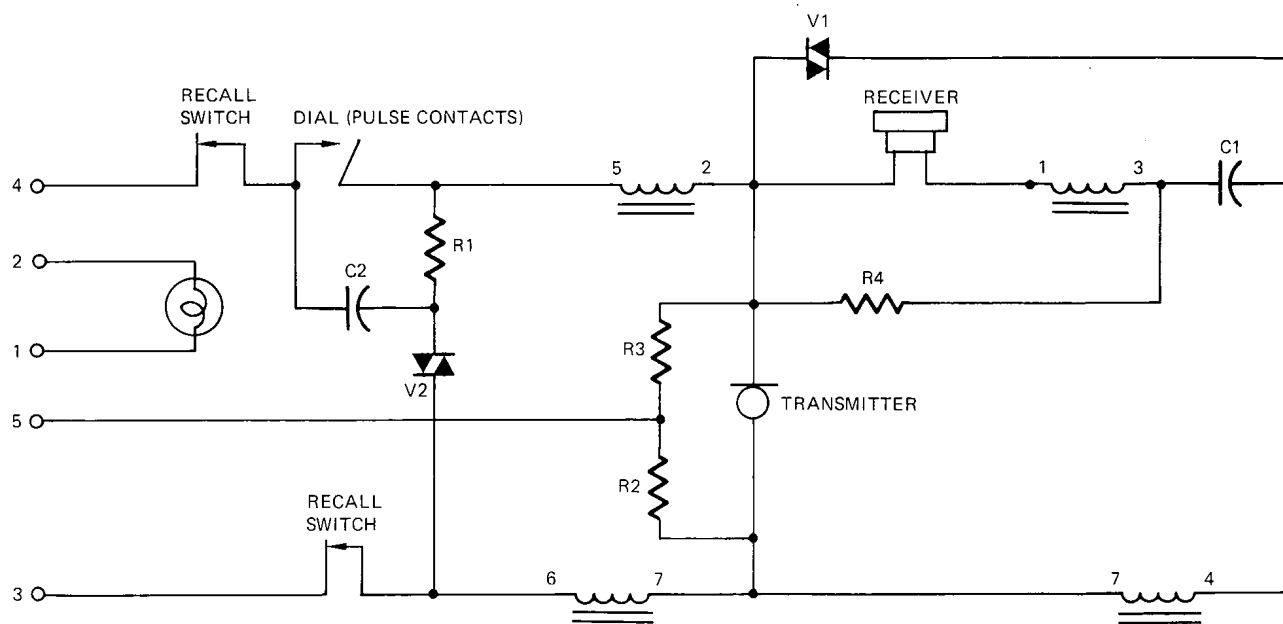


Figure 3: Model 183091 Network, Schematic

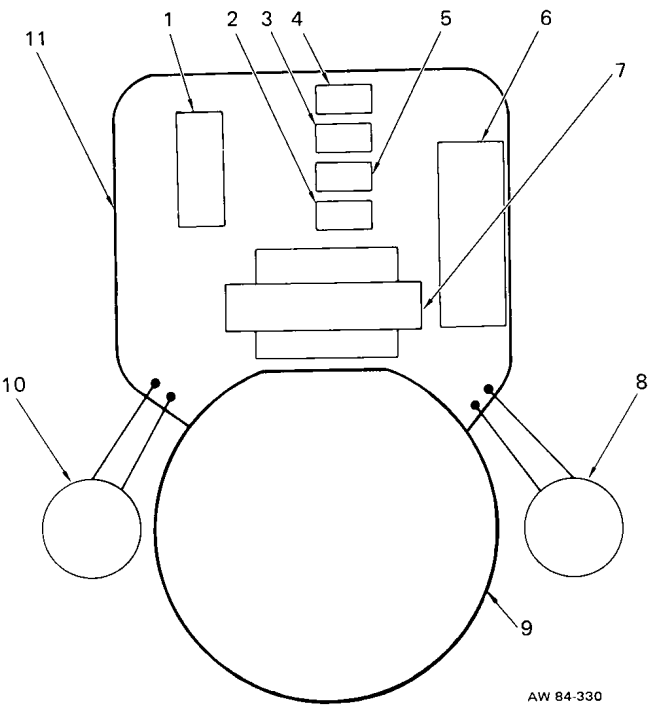


Figure 4: Models 184130 and 183091 Networks, Exploded View

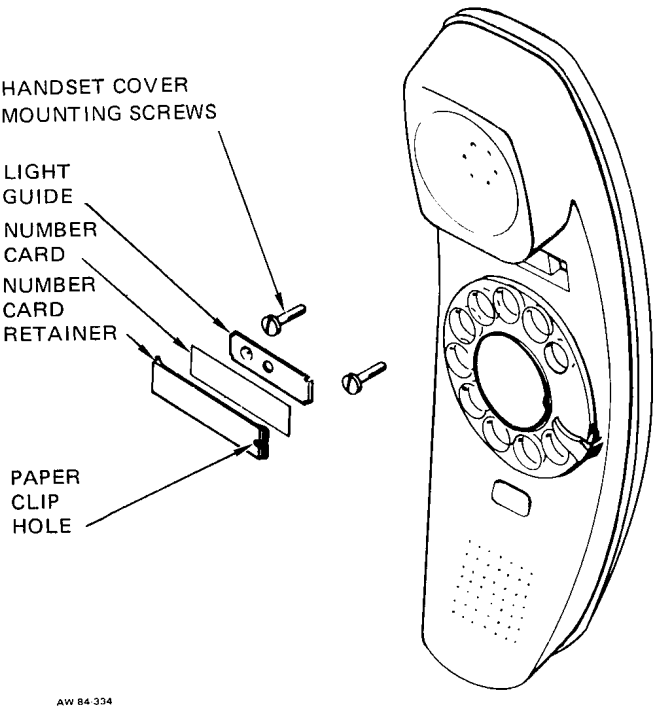


Figure 5: Removal of Number Card Retainer

TABLE A
ORDERING INFORMATION

| CODE NUMBERS | | | |
|--|---|----------------------|-------------|
| NETWORK CODE NUMBERS ARE FORMED IN TWO STEPS AS FOLLOWS: | | | |
| (1) Network Model Number (See Part 1) | | 184130 | 101 |
| (2) Network Style (See Part 2) | | | |
| PART 1 NETWORK MODEL NUMBER | | PART 2 NETWORK STYLE | |
| CODE | DESCRIPTION | CODE | DESCRIPTION |
| 184130 | Model 184130 Network For Rotary Dial Trendline Telephones With Modular Handsets | 101 | Standard |
| 183091 | Model 183091 Network For Rotary Dial Trendline Telephones With Nonmodular Handsets | 101 | Standard |

AW 84-977

- (b) Remove the two screws that hold the handset cover to the handset housing. Remove the handset cover.
- (c) Loosen the two mounting bracket screws and position the brackets away from the network.
- (d) Lift the network from the handset and remove all leads from the dial, lamp, and receiver.

4. DISASSEMBLY

4.01 Disassembly of the network is not recommended since it would require removal of components and terminals. For maintenance purposes, it is suggested that a questionable unit be substituted with a known good unit.

5. REPLACEMENT PARTS

5.01 Replacement parts for the Models 184130 and 183091 networks are listed in Table B.

6. INSTALLATION

6.01 To install the network inside a telephone, proceed as follows:

- (a) Remove the handset cover.
- (b) Connect the various network leads to the telephone components while referring to the appropriate telephone circuit label.

- (c) Position the network over the transmitter.
- (d) Position the retainer brackets on the network transmitter cup and tighten the two bracket screws.
- (e) Position the two varistors next to a retainer bracket. (See Figure 6.)
- (f) Place the handset cover on the housing. Secure it using two screws.
- (g) Install the light shield, number card, and number card retainer in the slot provided. (See Figure 5.)

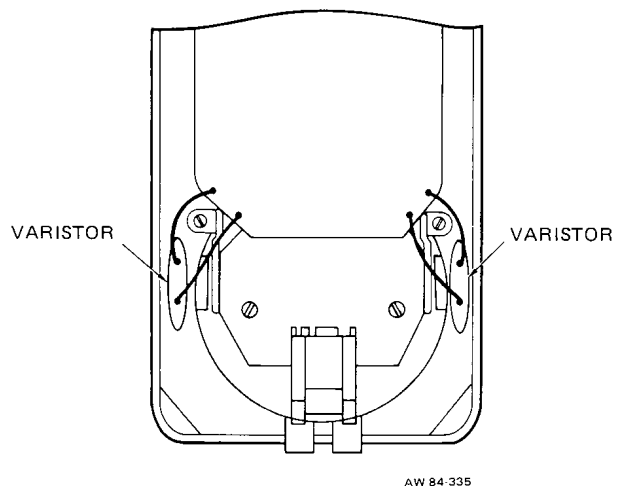


Figure 6: Position of Varistors

TABLE B
REPLACEMENT PARTS LIST

| INDEX NO | PART NUMBER | DESCRIPTION | QUANTITY USED | |
|----------|-------------|---|---------------|--------|
| | | | 184130 | 183091 |
| | | Models 184130 And 183091 Networks | | |
| 1 | 181164-117 | Capacitor, C2, 0.15 MFD, $\pm 20\%$, 250 V | 1 | 1 |
| 2 | 062948-778 | Resistor, R1, 220 Ohm, 1/2 W, $\pm 10\%$ | 1 | 1 |
| 3 | 181789-240 | Resistor, R3, 1.6 K, 1/2 W, $\pm 5\%$ | 1 | 1 |
| 4 | 181789-236 | Resistor, R4, 33 Ohm, 1/2 W, $\pm 5\%$ | 1 | 1 |
| 5 | 181789-239 | Resistor, R2, 2 K, 1/2 W, $\pm 5\%$ | 1 | 1 |
| 6 | 095995-112 | Capacitor, C1, 1.5 MFD, $\pm 10\%$, 100 V | 1 | 1 |
| 7 | 088710-104 | Coil Assembly, Induction | 1 | 1 |
| 8 | 095974-101 | Varistor, V1 | 1 | 1 |
| 9 | 182995-101 | Transmitter Cup Assembly | 1 | — |
| 9 | 088597-101 | Transmitter Cup Assembly | — | 1 |
| 10 | 095974-102 | Varistor, V2 | 1 | 1 |
| | 088576-101 | Switch Assembly (Not Shown) | 1 | 1 |
| 11 | 183090-101 | PC Board, Drilled | 1 | 1 |
| | 182996-102 | Modular Jack Assembly (Not Shown) | 1 | — |

NOTE: All capacitor values are in microfarads (MFD).

AW 84-978