

STATION SYSTEMS  
NO. 5A KEY EQUIPMENT  
ARRANGED FOR ONE-WAY  
LOUDSPEAKER CONFERENCE SERVICE

**0. CHANGES**

0.1 CHANGED AND ADDED FUNCTIONS

None.

0.2 CHANGES IN APPARATUS

None.

0.3 CHANGES IN CIRCUIT REQUIREMENTS  
(Not Associated with 0.2 Above)

None.

0.4 DESCRIPTION OF CIRCUIT CHANGES

None.

0.5 REASON FOR REISSUE

- (a) To show connections for 24- and 48-volt operation of the 106-type loudspeaker unit.
- (b) To correct drawing.

- (a) Standard central office subscriber line circuits.
- (b) Standard PBX station line circuits.
- (c) Standard telephone set with a D6AA cord, or equivalent.

**5. DESCRIPTION OF OPERATION**

5.1 LINE SIGNAL

On an incoming call from a central office or PBX, the ringer in the telephone set is sounded in the usual manner. (This ringing circuit is connected across the line at all times and will function whether the key is in the normal or operated position.)

5.2 ANSWERING OR ORIGINATING A CALL ON A CENTRAL OFFICE OR PBX LINE

With the key normal, a call is answered by removing the handset or receiver from the switchhook in the usual manner.

5.3 LOUDSPEAKER SERVICE

When the key is operated with the handset or receiver removed from the switchhook, the line is transferred from the telephone set to the loudspeaker set. This permits the incoming conversation to be received at the loudspeaker.

**1. PURPOSE OF CIRCUIT**

This circuit provides two-way service between a central office or PBX and a subscriber line and loudspeaker services on a one-way telephone conversation to this station.

**2. WORKING LIMITS**

Normal station limits shall apply.

**3. FUNCTIONS**

This circuit provides for:

- (a) Answering and originating calls in the normal manner.
- (b) One-way loudspeaker service.

**6. ADJUSTMENTS**

- (a) When using a 106A loudspeaker set, adjust inside potentiometer at bottom of unit to eliminate excessive volume at maximum setting of volume control on front of unit.
- (b) When using a 106B loudspeaker set, adjust inside potentiometer on side of unit, which controls the automatic volume control, to give equal output level to all voices. Then adjust inside potentiometer at bottom of unit to eliminate excessive volume at maximum setting of volume control on front of unit.
- (c) If 106-type loudspeaker set is powered by 24 volts dc, replace the 2Y pilot light lamp with a 2U lamp. If 106-type loudspeaker set is powered by J87202 power supply, replace the 2Y pilot light lamp with a 2T lamp.

**4. CONNECTING CIRCUITS**

When this circuit is listed on a key sheet, the connecting information thereon is to be followed. The following are typical connecting circuits.

BELL TELEPHONE LABORATORIES, INCORPORATED  
DEPT 5335-FD-LHA

## CIRCUIT NOTES:

DESIG	AMP	POTENTIAL FUSED	ONE PER

FEATURE OR OPTION		PROVIDE		
		FIG.	APP OR WIR	QUANTITY
6017K KEY & 100-TYPE LS SET (MD)	CONNECTION TO ANTI-SIDETONE SUB SET	1		1 PER STA
	CONNECTION TO SIDE TONE SUB SET	2		
6017AM KEY & 100, 106-TYPE LS SETS	CONNECTION TO 100-TYPE LS SET		X	
	CONNECTION TO 106A LS SET	3	Y	
	CONNECTION TO 106B LS SET		Z	
J87202 POWER SUP CONNECTION & STRAP-PING OF 106-TYPE LS		4		
24V DC POWER CONNECTIONS AND STRAP-PING OF 106-TYPE LOUDSPEAKER		5		
48V DC POWER CONNECTIONS AND STRAP-PING OF 106-TYPE LOUDSPEAKER		6		

NETWORK VALUES			
NETWORK		RESISTANCE IN OHMS	CAPACITANCE IN UF
NO.	CODE		

RECORD OF FIGURES, WIRING, AND APPARATUS CHANGES						
CHANGED ON ISSUE	IF JOB RECORDS DO NOT SPECIFY	THIS OPTION WAS FURN	SEE NOTE	USE IN CIRCUIT		
				STD	A&M	MD
7D	FIG. 3, 4,	FIG. 1 OR 2		FIG. 3, 4		FIG. 1, 2
8D	FIG. 5 OR 6			FIG. 5 OR 6		

## CIRCUIT NOTES (CONT):

105. IN FIG. 1 AND 2 ALL A CONTACTS SHALL MAKE BEFORE THE B CONTACTS BREAK.

## INFORMATION NOTES:

301. UNLESS OTHERWISE SPECIFIED: RESISTANCE VALUES ARE IN OHMS; CAPACITANCE VALUES ARE IN MICROFARADS.

FIGURES AND OPTIONS ON THIS DWG		
CKT FIG.	APP OR WIRING	
1	X	
2	Y	
3	Z	
4		
5		
6		

SD-69067-01

STATION SYSTEMS  
NO. 5A KEY EQUIPMENT  
ARRANGED FOR ONE-WAY  
LOUDSPEAKER CONFERENCE SERVICE

AT&TCO  
STANDARD

SD-69067-011

3 SHEETS

BELL TELEPHONE LABORATORIES  
INCORPORATEDDWG SIZE  
3S

PRINTED IN U.S.A.

FIG.1 (MFR DISC)  
ANTI-SIDE TONE SUB. SET

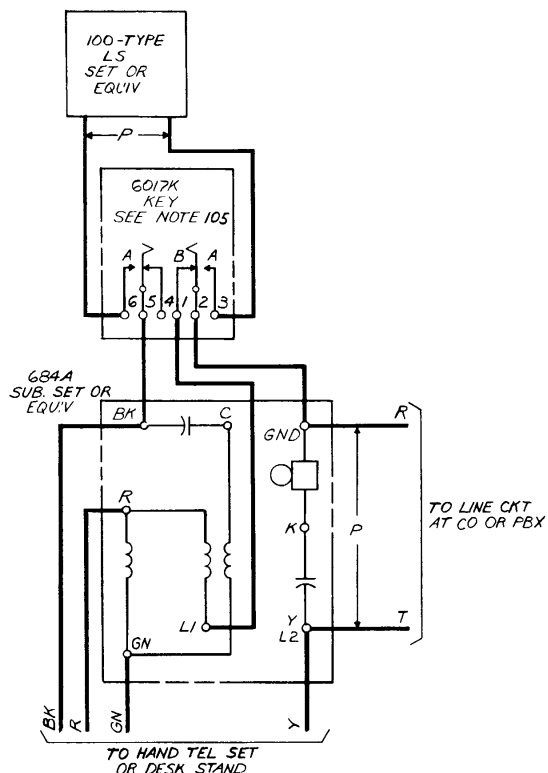


FIG.2 (MFR DISC)  
SIDE TONE SUB. SET

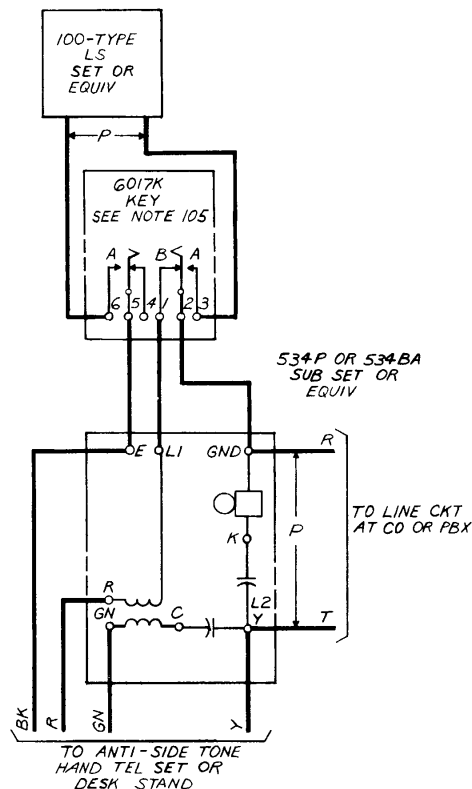
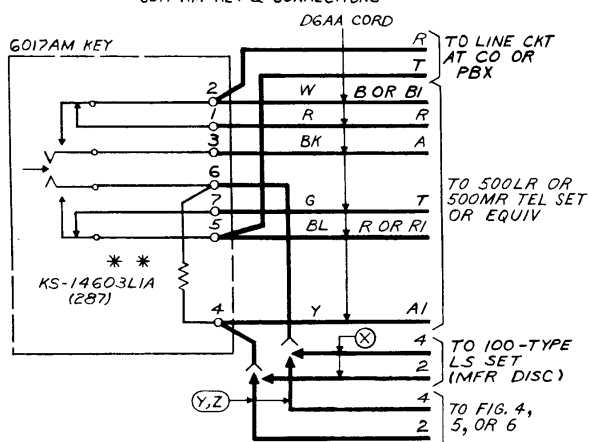


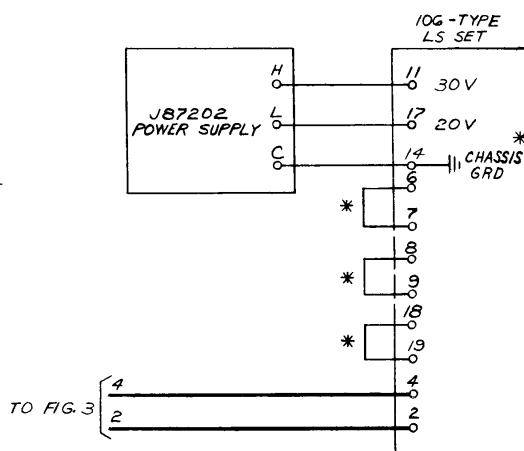
FIG.3  
6017 AM KEY & CONNECTIONS



\* \* REMOVE FROM KEY WHEN USING X OPTION.

\* CHASSIS GRD & STRAPS RUN BY INSTALLER.

FIG.4  
JB7202 POWER SUPPLY CONNECTIONS  
& STRAPPING OF 106-TYPE LOUDSPEAKER



\* CHASSIS GRD & STRAPS RUN BY INSTALLER.

STATION SYSTEMS  
NO. 5A KEY EQUIPMENT

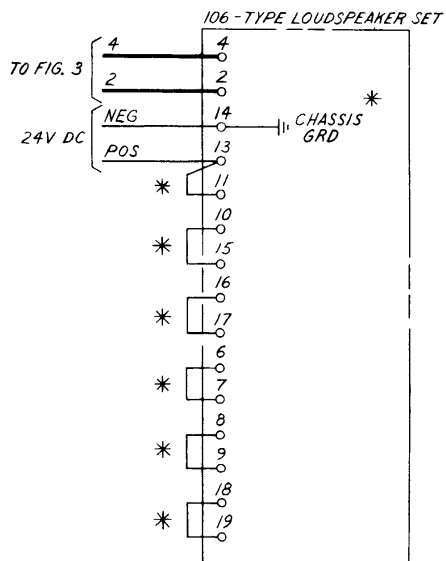
BELL TELEPHONE LABORATORIES  
INCORPORATED

3S

SD-69067-012

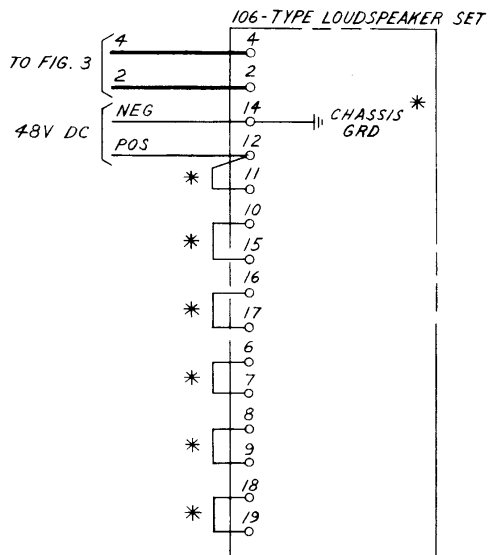
PRINTED IN U.S.A.

FIG. 5  
24V DC POWER CONNECTIONS AND  
STRAPPING OF 106-TYPE LOUDSPEAKER



\* CHASSIS GRD AND STRAPS RUN  
BY INSTALLER

FIG. 6  
48V DC POWER CONNECTIONS AND  
STRAPPING OF 106-TYPE LOUDSPEAKER



\* CHASSIS GRD AND STRAPS RUN  
BY INSTALLER

STATION SYSTEMS  
NO. 5A KEY EQUIPMENT

BELL TELEPHONE LABORATORIES  
INCORPORATED

3S

SD-69067-013

PRINTED IN U.S.A.