

CONSTRUCTION AND  
MAINTENANCE PRACTICES  
OUTSIDE PLANT



SECTION 57  
PART 566

PBX SYSTEMS -  
555 MANUAL CONFERENCE CIRCUIT

CONTENTS	ITEM NUMBER
General .....	566. 1
Description.....	566. 2
Use .....	566. 3

566. 1 GENERAL: This circuit provides conference equipment to connect:

- (a) From one to four stations and one trunk or private line.
- (b) From one to three stations and one or two trunks or one trunk and one private line.
- (c) From two to five stations.

566. 1-a FIGS. 1, 2, 3 and 4 are supplied for reference.

566. 2 DESCRIPTION: Five jacks are provided, jacks (A), (B) and (C) are used when up to three stations are to be connected. Jacks (D) and (E) are used to connect an additional two stations or one or two trunks or one trunk and a private line.

566. 3 USE: When station conference connections are required, the right or station cords are used to connect the stations, and the left or trunk cords connected to the (A), (B), (C), (D) and (E) jacks of the conference unit. When two or more stations and a trunk are to be conference-connected, the left or trunk cord is connected to the trunk and the right or station cord to jack (D) or (E) in the conference unit. In this case talking and supervisory battery is supplied to jacks (A), (B) and (C) through the 11B lamps, the 274AE retard coils and the 2-1, 6-5 windings of the 202A repeat coils to the stations. Talking and supervisory battery is supplied to the (D) and (E) jacks from the PBX cord circuit.

566. 3-a When a trunk or private line circuit is connected to jack (D) and two or more stations, the 274U retard coil in the (D) jack circuit acts as a holding bridge to the central office trunk or private line circuit. Its impedance to voice current is very high and presents a negligible loss in the line (about . 1 db).

566. 3-b When jack (E) is used with jack (D) to connect another trunk or private line circuit the TR condensers serve as a talking path between the two trunks. Since there is no physical connection between the two, no dc signaling interference of the two trunks results. The holding bridge of the circuit in jack (E) is through the 4-3 windings of the A, B, and C 202A station repeat coils.

566. 3-c When stations disconnect from the circuit ordinary cord supervision is received by the PBX operator and the cord pairs are taken down.

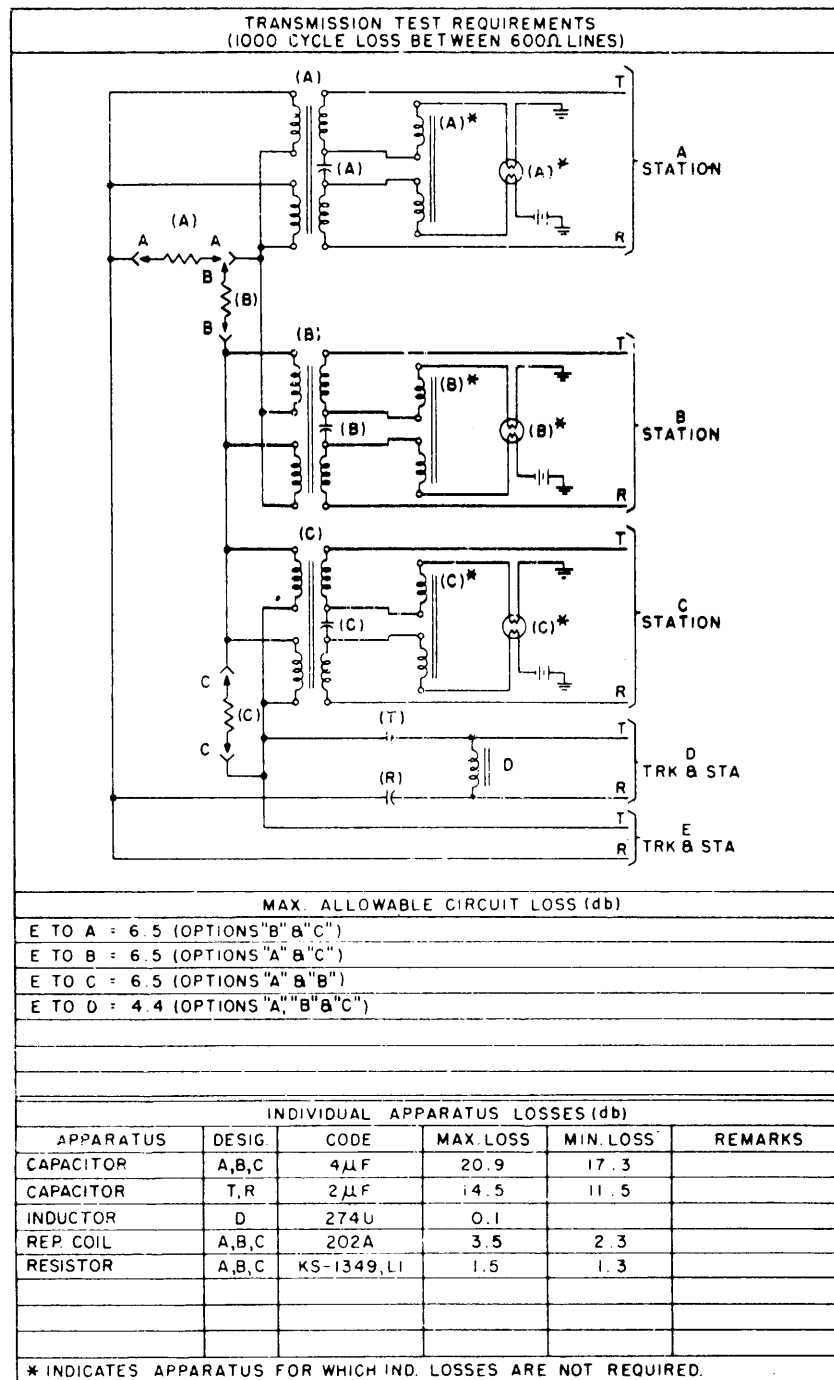
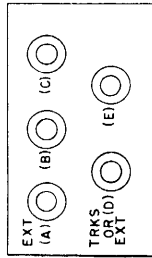
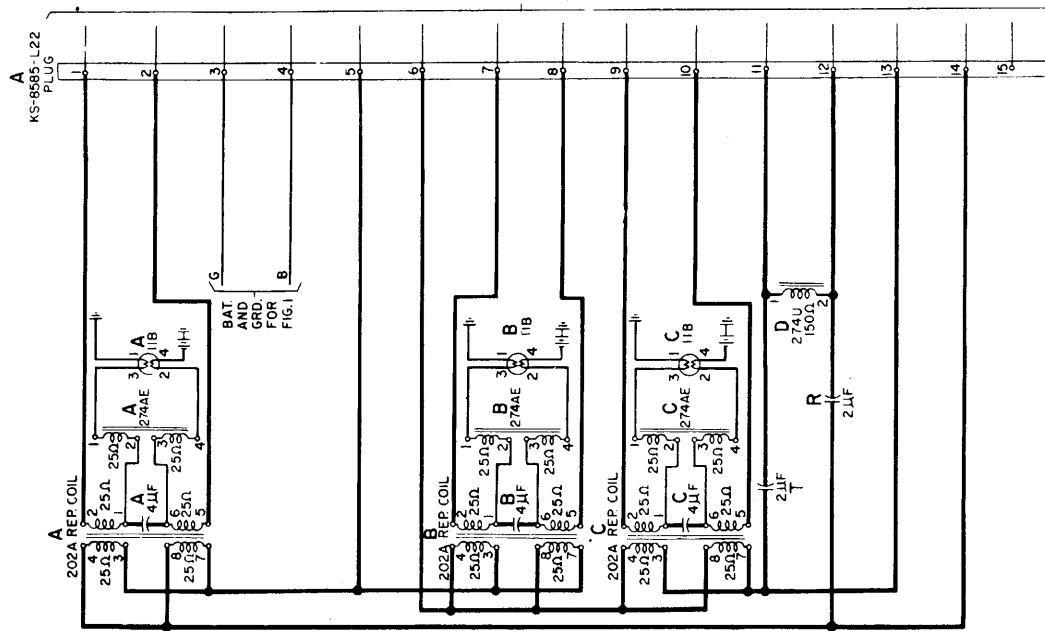


FIG. 4



JACKS IN UNIT (FIG 2)

FIG. 1  
CONFERENCE CIRCUIT



TO FIG. 3

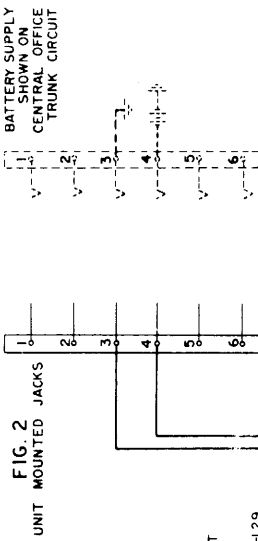
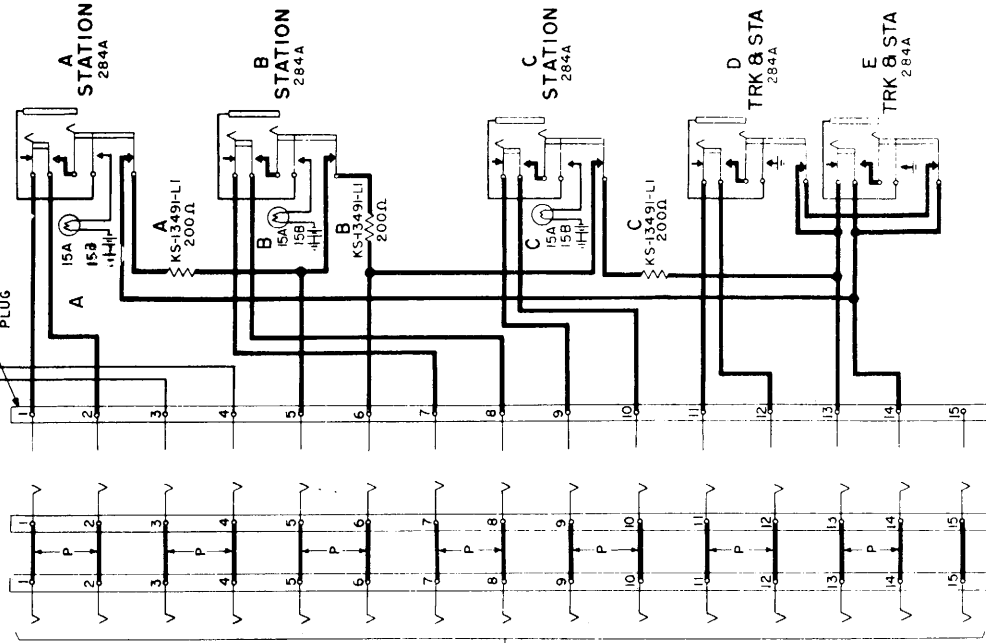


FIG. 2  
UNIT MOUNTED JACKS

FIG. 3  
CONNECTING CABLE CIRCUIT

A KS-8586-L30 KS-8586-L29  
SOCKET SOCKET  
B KS-8586-L14 KS-8586-L15  
SOCKET SOCKET



TO FIG. 1