

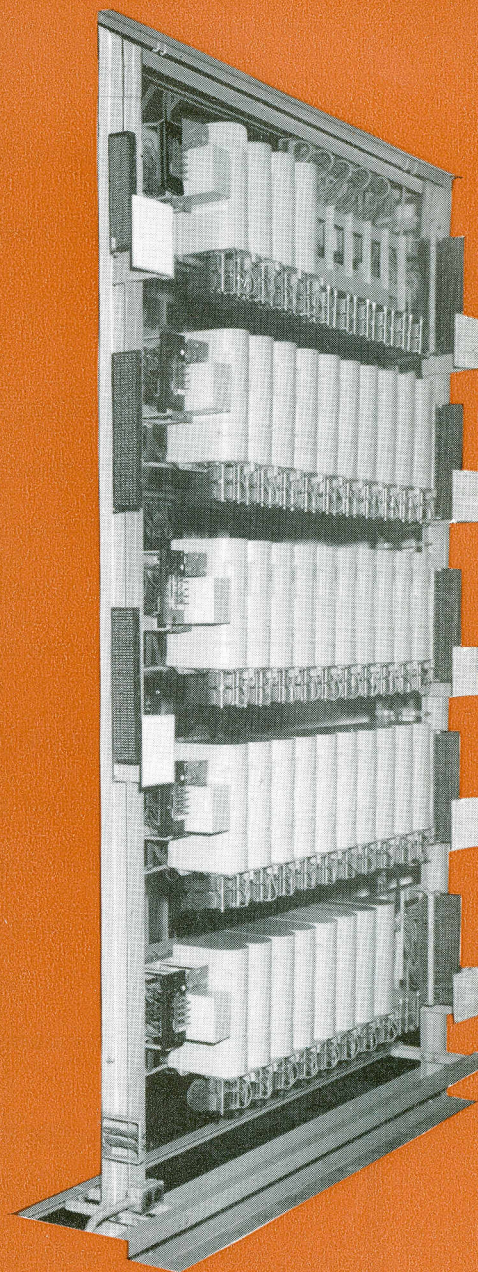
Going Dial?



The return that a telephone company earns on its investment depends on the service it offers. Modern subscribers demand the *best*—and under today's conditions that means "going dial."

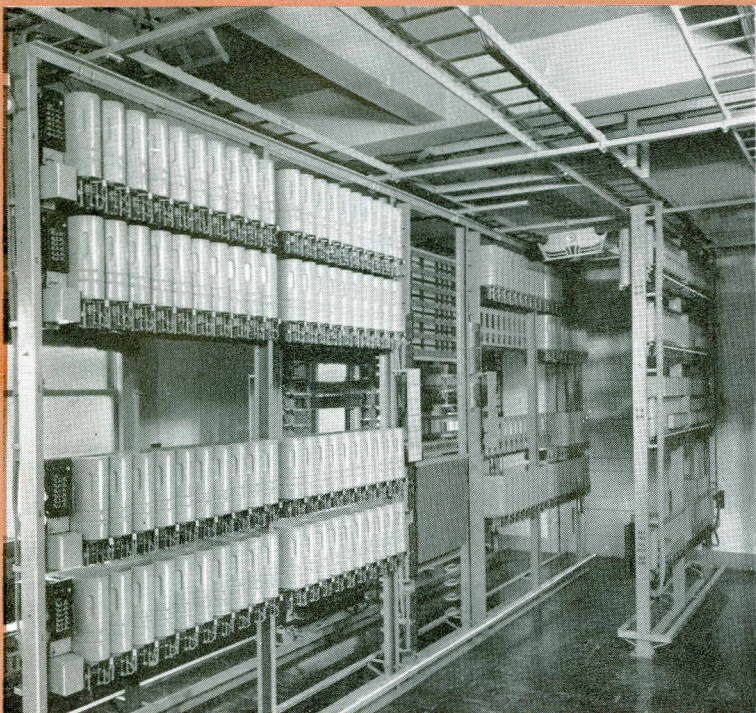
Not only does automatic equipment provide better service, but it begins to pay for itself as soon as it is installed. It assures reduced operating and maintenance costs. Result: added income and additional revenue for expansion and improvements.

In the light of today's booming demand for extra telephone services of all kinds, requirements for future growth also must be anticipated. Strowger Automatic equipment gives you every modern feature, yet the simple circuits and unitized construction allow you maximum freedom to expand—easily and economically.



THE TYPE 11 M-A-X

Supplied in a range of capacities to serve from 30 to 400 lines, initially. Available in either 9' or 11' 8" heights. The 9' height requires a ceiling of at least 10' 6", while the 11' 8" height requires a ceiling of at least 12' 6".



THE TYPE 20 M-A-X

Custom engineered to serve exchanges of above 400 lines. Available in either 9' or 11' 8" heights. The 9' height requires a ceiling of at least 10' 6", while the 11' 8" height requires a ceiling of at least 12' 6".

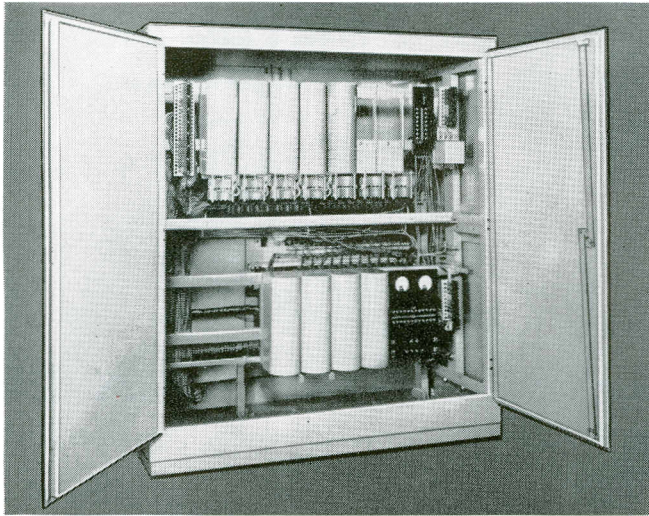
Strowger gives you all these modern features:

- 2L5N numbering
- Intertoll dialing with the latest supervisory standards
- Easy adaptation to Direct Distance Dialing
- Economical expansion with simple jack-in equipment
- Easy adaptation to Strowger Automatic Toll Ticketing—and Strowger ticketing equipment works directly into accounting machines without converters
- Direct dial control—no delays for common equipment
- Most modern, fastest information boards
- Banks and wipers in plain view—easy to see and reach
- Low maintenance, fast call-tracing
- Simplified checking—each switch and its control relays mounted as a unit
- Your choice of terminal-per-station or terminal-per-line
- Either frequency per group or per terminal, with terminal-per-station
- Trunk repeaters for carrier, microwave, physical, or composite circuits
- Full-feature toll boards—cord-type or cordless
- Fire-reporting systems, manual and automatic
- Automatic Time Announcing
- Automatic Weather Reporting
- Automatic Intercept Announcing
- Quick, easy testing of lines for leaks, grounds, or foreign battery, with the Automatic Line Router
- Remote testing of unattended offices
- Fully automatic alarm systems within office and at remote points
- "Four-wire" toll switching

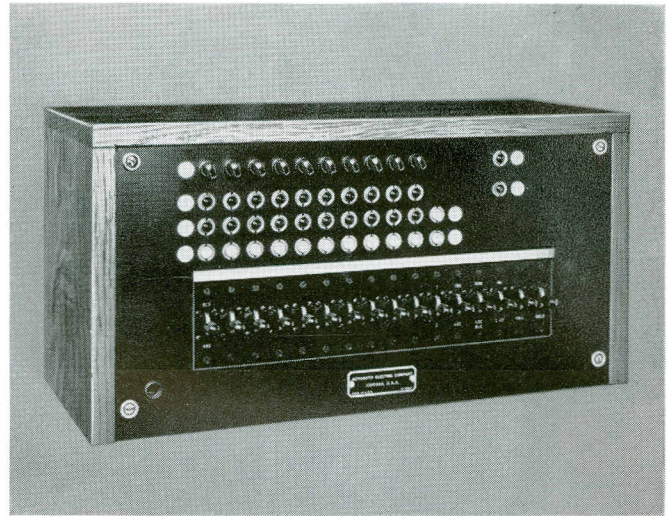
Automatic Electric's complete service, (engineering, equipment, installation and training) has helped many, many companies modernize and expand their plant facilities . . . at minimum overall cost. It will do the same for you. Whatever your problem may be, our staff is always available, ready and anxious to help you.

AUTOMATIC'S COMPLETE P-A-B-X LINE

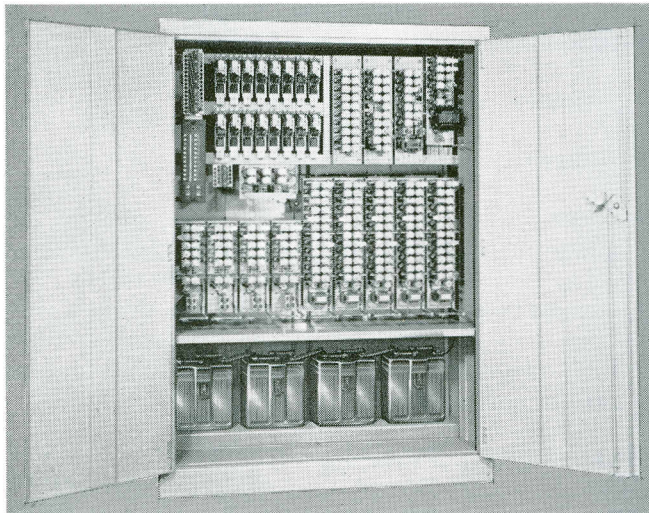
BUILDS BUSINESS 3 WAYS



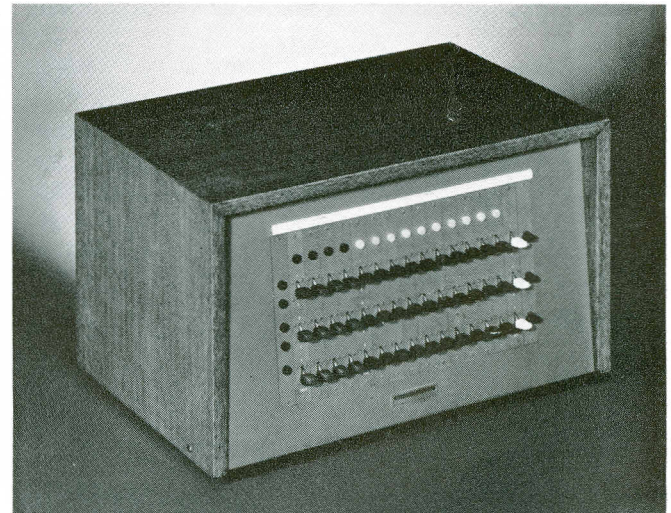
Type 25-B P-A-B-X—25-75 telephones, up to 14 conversations at once. Attendant's cabinet. Write for Circular 1815-A for full particulars.



"Cordless" Attendant Cabinet for Type 25B P-A-B-X has no cords, plugs, or jacks; connections are completed by key operation and by dialing (using a standard automatic telephone as the attendant's telephone).

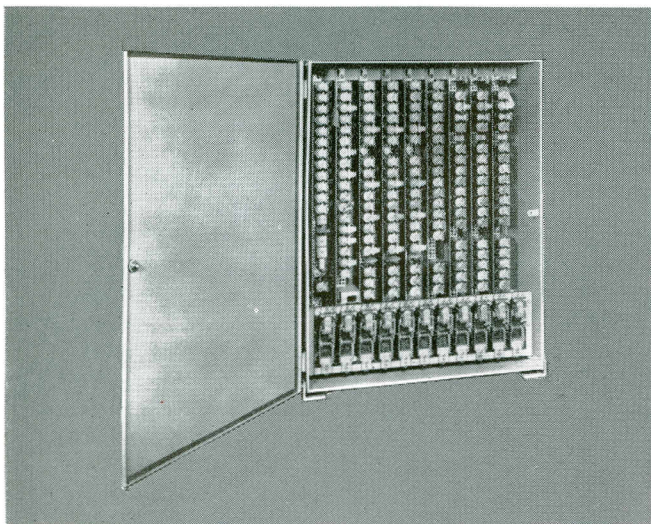


Type 33A6A P-A-B-X—Up to 20 telephones, 9 conversations at once (4 inside, 5 outside). With or without attendant's cabinet. Circular 1818-A gives full details.

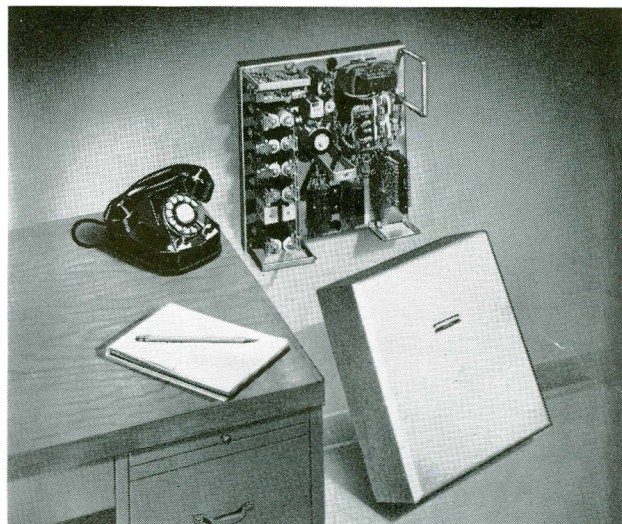


Cordless PBX—Two sizes: 10 lines, 4 trunks, 5 connecting circuits; 20 lines, 5 trunks, 5 connecting circuits. Can be supplied for 24- or 48-volt operation, and for use on automatic, manual, or magneto central-office trunks. A standard desk-type telephone is used as attendant's instrument. For full details, request Circular 1793.

- 1 Fast, easy-to-use, automatic inside service
- 2 Improved service to and from public exchange
- 3 Auxiliary services to meet individual needs



Type 95 P-A-B-X—Up to 12 telephones, 6 conversations at once (3 inside, 3 outside). No attendant required. Request Circular 1820 for more information.



Type 85 P-A-B-X—Up to 10 telephones, 3 conversations at once, (1 inside, 2 outside). No attendant required. Circular 1819 gives a complete description.

Dimensions and Auxilliary Services

Type of Exchange	Executive Key Calling	Executive Direct Line Telephone	Executive Right of Way	Direct Line Service	Secretary Answering Service	Conference Service	Area Paging Service	Public Address Cut In	Code Call Service	Night Transfer	Height	Width	Depth
25-B	●	●	●	●	●	●	●	●	●	●	4'9"	4'7"	2'
33A6A	●	●		●	●		●	●	●		5'6"	4'	1'6"
95	●	●		●	●		●	●			3'	2'4"	1'1"
85				●	●						14½"	14½"	5½"
Cordless—10 line											13"	22⅝"	13⅝"
Cordless—20 line											13"	32¼"	13⅝"

Delivery on the PBX and PABX equipment listed above will normally be made from stock.