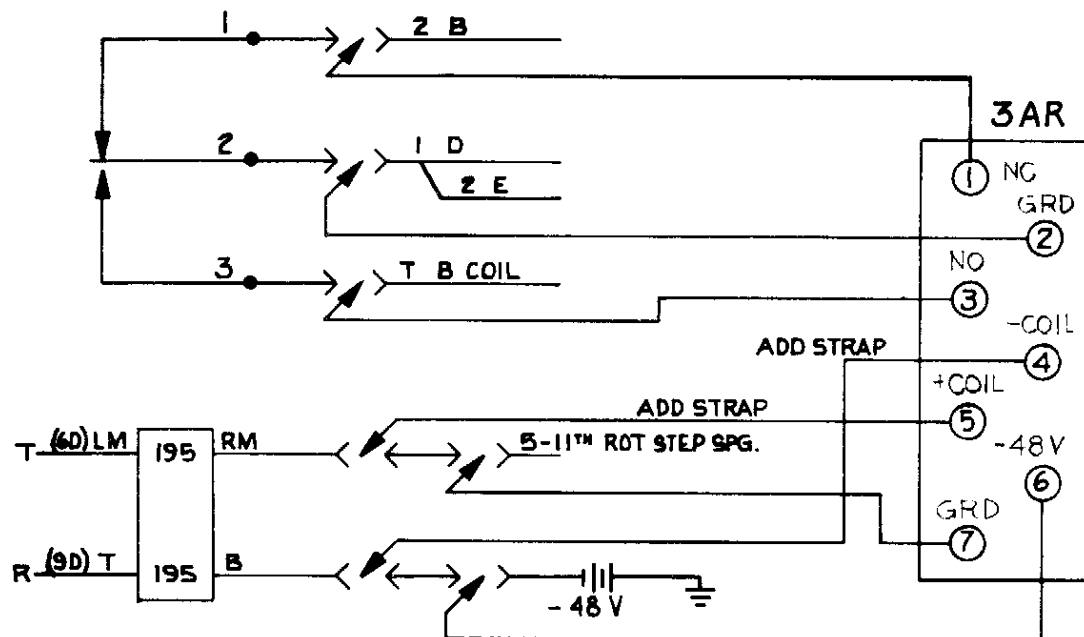


3AR RELAY

INSTALLATION INFORMATION FOR
TSI-3AR ELECTRONIC PULSING
RELAY ON WE SXS SELECTORS
WITH 3 SPRING 'A' RELAY.

SD-30200-01-1 ISS 29B

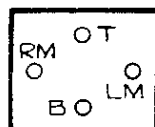


Installation Procedure

1. Remove and tag wires from 'A' relay contact springs 1, 2, and 3.
2. Remove contact spring assembly from heelpiece.
3. Remove armature.
4. Remove cover guide stud from heelpiece and place on Relay 'C'.
5. Install TSI-3AR relay on heelpiece using mounting screw provided.
- 6A. Remove battery wire from coil terminal 'B' and place on TSI-3AR Pin 6.
- B. Add strap from TSI-3AR Pin 4 to battery coil terminal 'B'.
- 7A. Remove wire from coil terminal 'RM' and place on TSI-3AR Pin 7.
- B. Add strap from TSI-3AR Pin 5 to coil terminal 'RM'.
8. Make other connections as shown in block diagram; wire tagged 1 to Pin 1, wire tagged 2 to Pin 2, wire tagged 3 to Pin 3.

Should your circuit be wired differently or there be any questions or additional information needed, please call Dale Briggs at 800-433-3337; in Texas call 800-792-3441.

WHERE THE INSTRUCTIONS CALL FOR
MOVING A WIRE MAKE CERTAIN
THAT ALL WIRES ON THAT TERMINAL
ARE MOVED AND RECONNECTED
WHERE SPECIFIED.



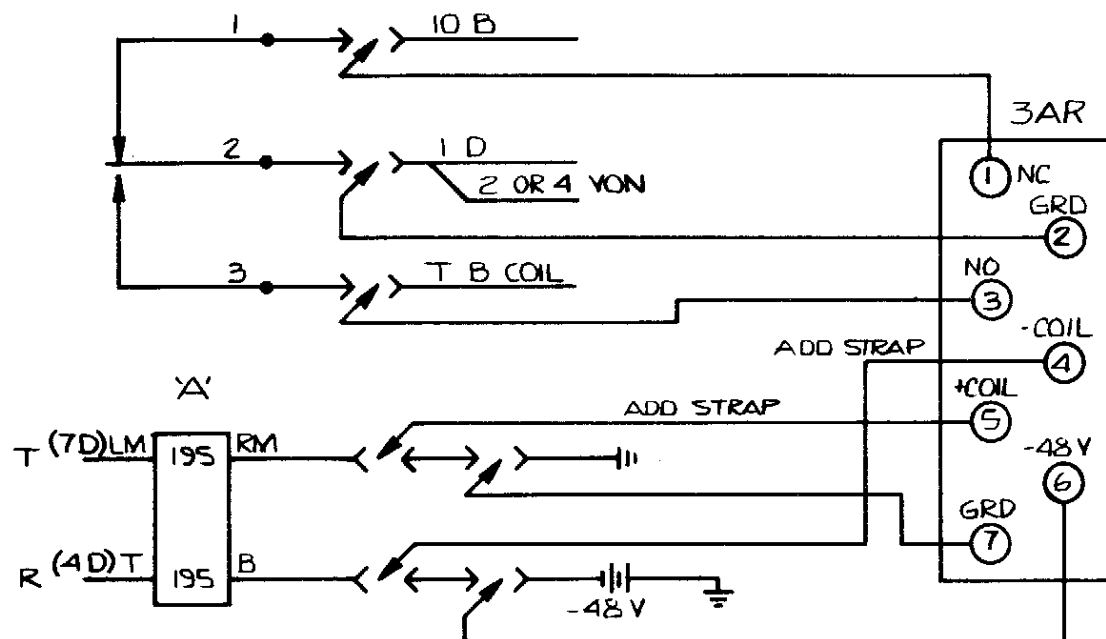
'A' RELAY
COIL TERMINAL
DESIGNATIONS AS
SEEN FROM REAR
OF SWITCH

TSI TELCO SYSTEMS, INC.	
P.O. BOX 7654 WACO, TX.	
TITLE INSTALLATION INSTRUCTIONS 3AR RELAY	
DATE 5/24	REMARKS REDRAWN
DATE 11-3-83	REVISIONS
CRAIG W. BLANCHARD	SD-30200-01-1 ISS 29B
SELECTOR	WE 3 SPRING
'A' RELAY	'A' RELAY

3AR RELAY

INSTALLATION INFORMATION FOR
TSI-3AR ELECTRONIC PULSING
RELAY ON WE SXS SELECTORS
WITH 3 SPRING 'A' RELAY.

ED-32183-30 155.17

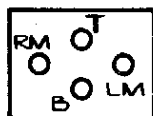


Installation Procedure

1. Remove and tag wires from 'A' relay contact springs 1, 2, and 3.
2. Remove contact spring assembly from heelpiece.
3. Remove armature.
4. Remove cover guide stud from heelpiece and place on Relay 'C'.
5. Install TSI-3AR relay on heelpiece using mounting screw provided.
- 6A. Remove battery wire from coil terminal 'B' and place on TSI-3AR Pin 6.
- B. Add strap from TSI-3AR Pin 4 to battery coil terminal 'B'.
- 7A. Remove wire from coil terminal 'RM' and place on TSI-3AR Pin 7.
- B. Add strap from TSI-3AR Pin 5 to coil terminal 'RM'.
8. Make other connections as shown in block diagram; wire tagged 1 to Pin 1, wire tagged 2 to Pin 2, wire tagged 3 to Pin 3.

Should your circuit be wired differently or there be any questions or additional information needed, please call Bob Forsythe at 800-433-3337; in Texas call 800-792-3441

WHERE THE INSTRUCTIONS CALL FOR
MOVING A WIRE MAKE CERTAIN
THAT ALL WIRES ON THAT TERMINAL
ARE MOVED AND RECONNECTED
WHERE SPECIFIED.



'A' RELAY
COIL TERMINAL
DESIGNATIONS AS
SEEN FROM REAR
OF SWITCH

TSI TELCO SYSTEMS, INC.	
P.O. BOX 7654 WACO, TX.	
TITLE INSTALLATION INSTRUCTIONS 3AR RELAY	
12/84 NEW DRAWING	1
DATE	REMARKS
12-14-84	'A' RELAY
CRAIG W. BLANCHARD	ED-32183-30 155.17
SELECTOR	WE 3 SPRING 'A' RELAY

3AR RELAY

INSTALLATION INFORMATION FOR
TSI-3AR ELECTRONIC PULSING
RELAY ON WE SXS CONNECTORS
WITH 3 SPRING 'A' RELAY.

CONNECTORS

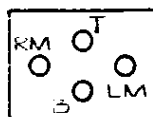
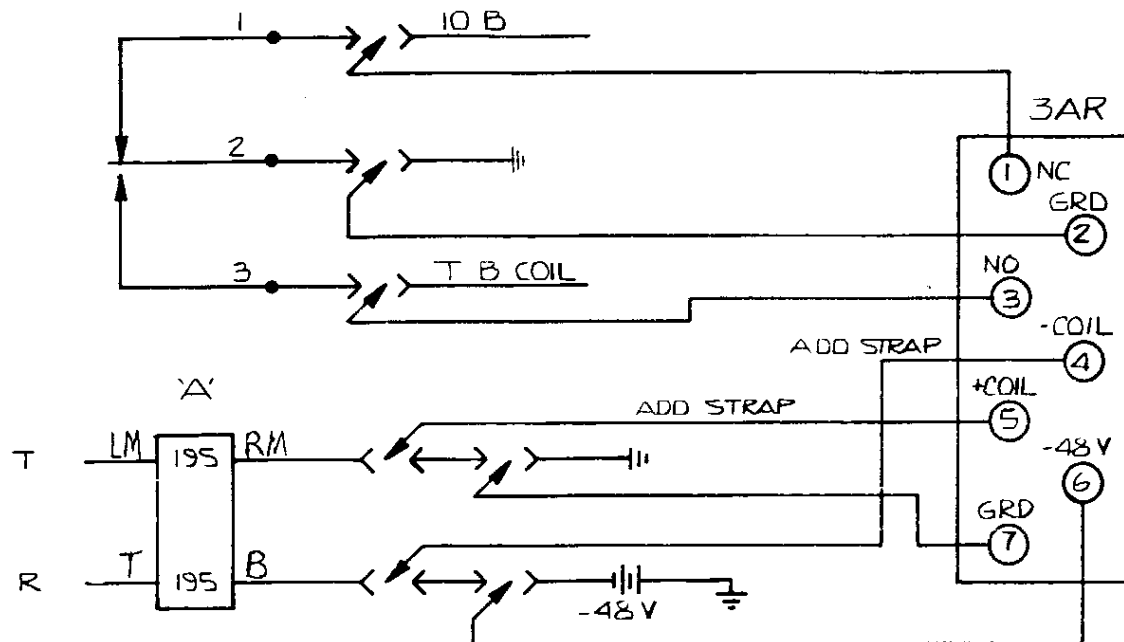
SD-30215-01-1	ISS. 37
SD-30228-01-1	ISS. 38
SD-30950-01-1	ISS. 19
SD-31737-01-1	ISS. 22 B
SD-31738-01-1	ISS. 24 D
SD-31739-01-1	ISS. 11 D

Installation Procedure

1. Remove and tag all wires from 'A' relay contact springs 1, 2, and 3.
2. Remove contact spring assembly from heelpiece.
3. Remove armature.
4. Remove cover guide stud from heelplace and place on Relay 'C.'
5. Install TSI-3AR relay on heelpiece using mounting screw provided.
- 6A. Remove battery wires from coil terminal (-48V) and place on TSI-3AR pin 6.
- B. Add strap from TSI-3AR pin 4 to battery coil terminal from which wires in item 6A were removed.
- 7A. Remove ground wires from ground coil terminal and place on TSI-3AR pin 7.
- B. Add strap from TSI-3AR pin 5 to ground coil terminal from which wires in item 7A were removed.
8. Make other connections as shown in block diagram; wire tagged 1 to pin 1, wire tagged 2 to pin 2, wire tagged 3 to pin 3.

Should your circuit be wired differently or there be any questions or additional information needed, please call Bob Forsythe at 800-433-3337; in Texas call 800-792-3441

WHERE THE INSTRUCTIONS CALL FOR MOVING A WIRE MAKE CERTAIN THAT ALL WIRES ON THAT TERMINAL ARE MOVED AND RECONNECTED WHERE SPECIFIED.



'A' RELAY
COIL TERMINAL
DESIGNATIONS AS
SEEN FROM REAR
OF SWITCH

TSI TELCO SYSTEMS, INC.			
P.O. BOX 7654 WACO, TX.			
TITLE			
INSTALLATION INSTRUCTIONS			
3AR RELAY			
2/54	NEW DRAWING	1	CRAIG W. BLANCHARD
DATE	REMARKS	ISS	CONNECTOR
REVISIONS		12-14-84	'A' RELAY
			WE 3 SPRING 'A' RELAY