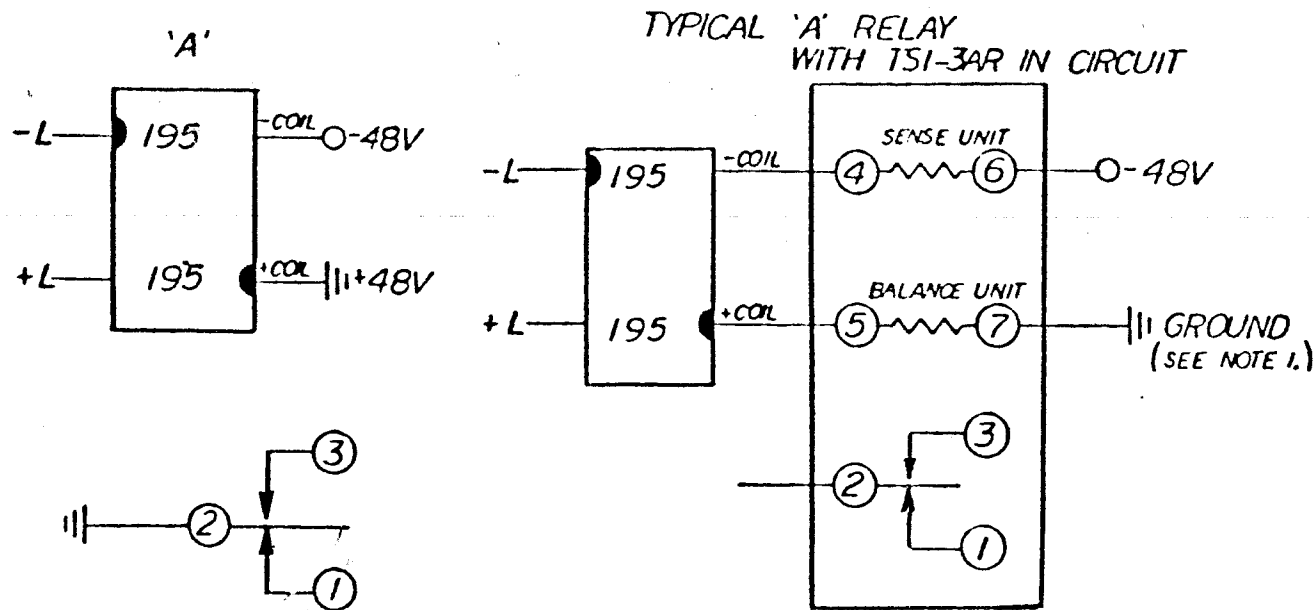
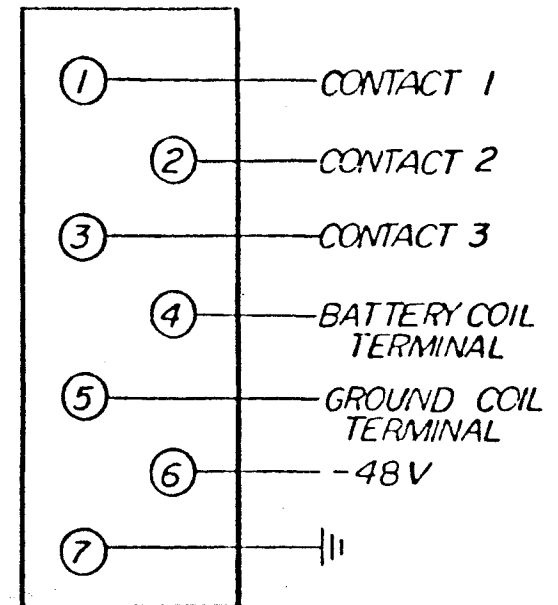


# 3AR RELAY

INSTALLATION INFORMATION FOR  
TSI-3AR ELECTRONIC PULSING RELAY  
ON AE SXS CONNECTOR AND SELECTOR SWITCHES.



## TSI-3AR PIN ASSIGNMENT



NOTES: 1.) GROUND POTENTIAL MAY EITHER BE  
DIRECTLY CONNECTED TO THE TERMINAL (RED WIRE)  
OR FROM A RELAY CONTACT SPRING OR  
A CAM SPRING (GREEN SWITCH WIRE).

2.) MAKE CERTAIN WHEN MOVING WIRES  
THAT CONTINUITY TO ANY OTHER POINT  
IS NOT BROKEN.

<b>TSI</b> TELCO SYSTEMS, INC.	
P.O. BOX 7654 WACO, TX.	
TITLE INSTALLATION INSTRUCTIONS 3AR RELAY	
DR BY: Bonnie Blanford	CHK BY: 3 SPRING 'A' RELAY
TOLERANCE	
SCALE	SHEET 1 OF 1
3AR RELAY	

DATE	REMARKS	REV.
9-1-83	REVISIONS ORIGINAL	

TSI-3AR Electronic Relay  
AE CO SxS Switches  
Installation Procedure

- Step 1 Remove and tag wires from contact springs.
- Step 2 Remove contact spring assembly from heelpiece.
- Step 3 Remove armature.
- Step 4 Remove cover guide stud from heelpiece and place on Relay "C".
- Step 5 Install TSI-3AR relay on heelpiece using 6-32 X 3/16" screw provided.
- Step 6A Remove battery wire from 'A' relay coil terminal and place on TSI-3AR Pin 6.  
6B Add strap from TSI-3AR Pin 4 to battery coil terminal.
- Step 7A Remove ground potential wire from 'A' relay coil terminal and place on TSI-3AR Pin 7.  
7B Add strap from TSI-3AR Pin 5 to ground coil terminal.  
See Note 1
- Step 8 Make other connections as shown in block diagram on reverse side under "TSI-3AR PIN ASSIGNMENT."

NOTE: Strap wire provided.

Should your circuit be wired differently or there be any question or additional information needed please call Dale Briggs at 1-800/433-3337.



Telco Systems, Inc.  
Dale Briggs, Nat'l. Sales Mgr.  
817-752-3415  
In WATS: 800-433-3337  
P.O. Box 7654  
Waco, Texas 76714-7654

2/27/84