

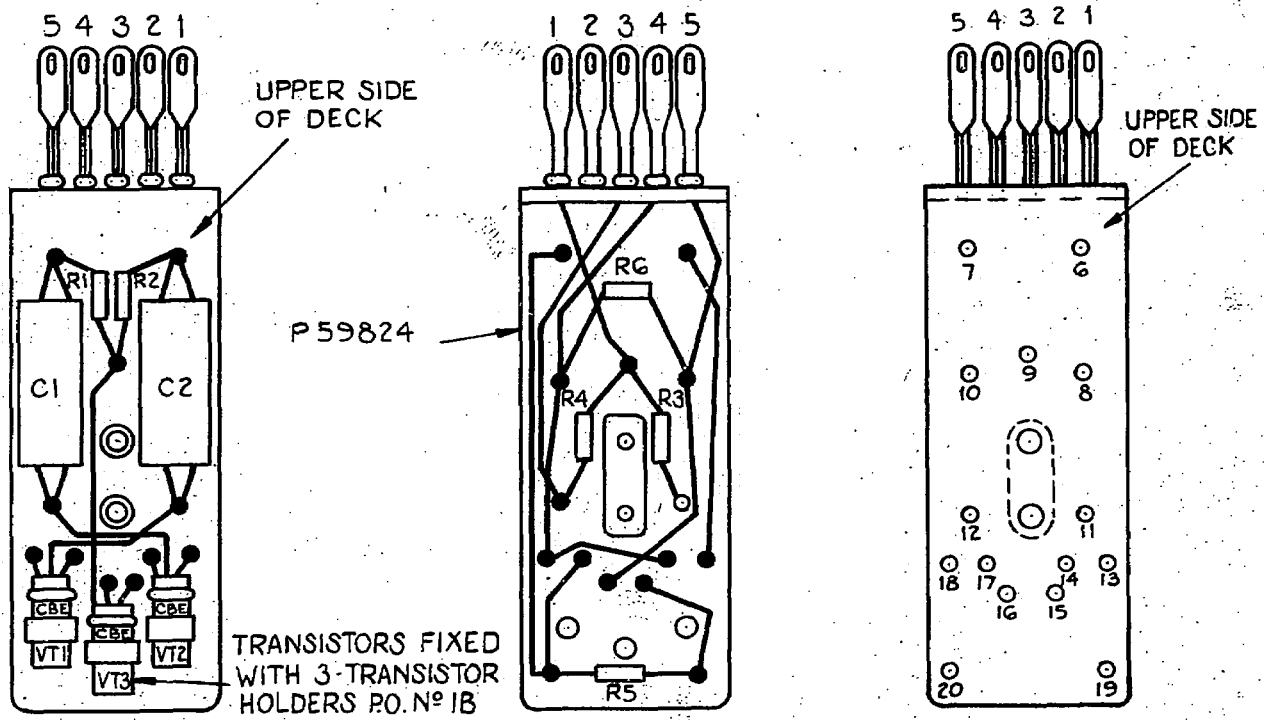
RELAY CODES & COMPONENTS LIST

GBW 16970 FIG. 1.

TRANSISTORISED TONE GENERATORS UAX NZ 13

| RELAY | BCC CODE | DIAG. FIG | NOTES | COMPT. DESIG-NATION | BPO CODE                     | NOTES  |
|-------|----------|-----------|-------|---------------------|------------------------------|--|
|       |          |           |       |                     | TONE DECK ASSY MTD ON RETARD |  |
|       |          |           |       | R1                  |                              | TAGS. 7-9 } $330\Omega$  |
|       |          |           |       | R2                  |                              | 6-9 } $\pm 5\%$  |
|       |          |           |       | R3                  |                              | 12-9 } ELECTROSYL $6.8K$   |
|       |          |           |       | R4                  |                              | 11-9 } TYPE TRA. $\pm 2\%$   |
|       |          |           |       | R5                  |                              | 19-20 } OR EQUIV $(2.2K \pm 5\%)$                                  |
|       |          |           |       | R6                  |                              | 8-10 } $(3.3K \pm 5\%)$  |
|       |          |           |       | C1                  |                              | 12 } GEC $.27 \mu F$   |
|       |          |           |       | C2                  |                              | 6-11 } POLYESTER $\pm 2\%$<br>TYPE OR EQUIV.                       |
|       |          |           |       | VT1                 |                              | 11, 17, 18 } MTD W/<br>12, 13, 14 } HOLDER<br>16, 15, 9 } P. N° 1B |
|       |          |           |       | VT2                 |                              |  |
|       |          |           |       | VT3                 |                              |  |

NOTES A SPECIAL FACTORS OF SAFETY B SPECIAL ADJUSTMENTS C CCT POINTS OF MODIFICATIONS.  
NOTE C1. ON SOME EARLIER EQUIPMENTS CV7074, CV7001 OR LAYOUT GET 103 MAY HAVE BEEN FITTED.



5 Centimetres 10

15

20

25

30

NZPO (8920) (4.8.67) (02968)

|  |     |
|--|-----|
| ISSUE 1.                               | APP |
| ISS. 1. ADVANCED ND. CHANGE.           |     |
| ISS. 2. 3-4-67                         |     |
| ISS. 3. 21-6-67                        |     |
| TRANSISTOR CARDS CHANGED. NYECI 833FB. |     |
| ISS. 4. 19-9-70                        | R11 |
| NOTE C1 AMENDED                        |     |
| ISS. 5. 4-5-71                         | R16 |
| REPLACEMENT TOG. INCORP. (83758)       |     |
| ISS. 5. 3-2-75 JHE                     |     |

|                      |                    |
|----------------------|--------------------|
| ORIGINATED BY        | G.E.C.             |
| DATE                 | 18-11-66           |
| SIGNED FOR COMMITTEE | <i>[Signature]</i> |

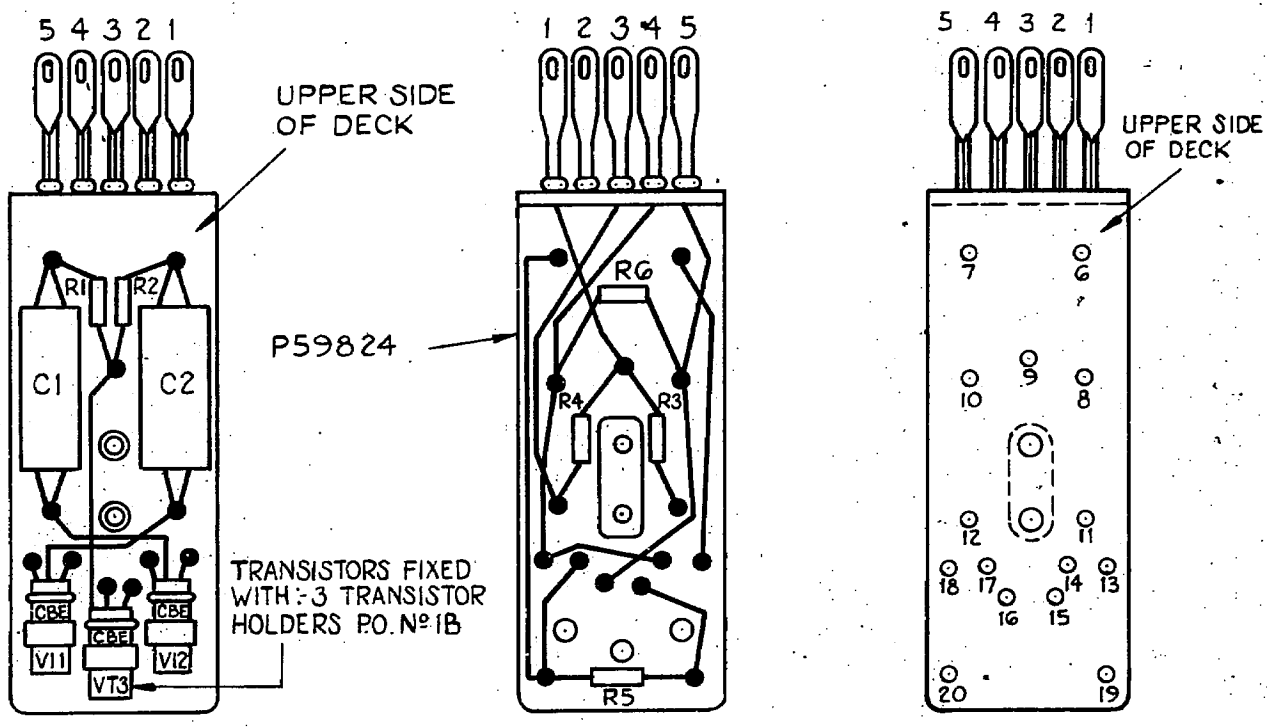
RELAY CODES & COMPONENTS LIST

GBW - 16970 FIG 2

TRANSISTORISED TONE GENERATORS. UAX NZ 13.

| RELAY | BCC CODE | DIAG. FIG | NOTES | COMPT. DESIGNATION | BPO CODE | NOTES                                    |
|-------|----------|-----------|-------|--------------------|----------|--|
|       |          |           |       |                    |          | TONE DECK ASSY MTD ON RETARD             |
| R1    |          |           |       |                    |          | TAGS 7-9 } 390Ω                          |
| R2    |          |           |       |                    |          | 6-9 } ±5%                                |
| R3    |          |           |       |                    |          | 12-9 ELECTROSYL } 6.8K                   |
| R4    |          |           |       |                    |          | 11-9 } TR4 TYPE } ±2%                    |
| R5    |          |           |       |                    |          | 19-20 } OR EQUIV. } (22K±5%)             |
| R6    |          |           |       |                    |          | 8-10 } (33K±5%)                          |
| C1    |          |           |       |                    |          | 7-12 } GEC } .12μF                       |
| C2    |          |           |       |                    |          | 6-11 } POLYESTER } ±2%<br>TYPE OR EQUIV. |
| VT1   |          |           |       |                    |          | CV9259 OR 11, 17, 18. } MOUNTED          |
| VT2   |          |           |       |                    |          | MULLARD AC128 12, 13, 14 } W/- HOLDER    |
| VT3   |          |           |       |                    |          | (NOTE C1.) 16, 15, 9 } PDN° 1B           |

NOTES A SPECIAL FACTORS OF SAFETY B SPECIAL ADJUSTMENTS C CC1 POINTS OF MODIFICATIONS.  
NOTE C1. IN SOME EARLIER EQUIPMENTS CV7074, CV7001 OR LAYOUT GET 103 MAY HAVE BEEN FITTED.



ISSUE - 1  
155. ADVANCED, NO CHANGE.  
155. 21-3-4-67  
155. ADVANCED, NO CHANGE.  
155. 31-21-6-67  
TRANSISTOR CODES CHANGED - NOTE C1 ADDED.  
155. 4- (9-9-70)  
NOTE C1 AMENDED  
155. 5- 4-5-71  
REPLACEMENT ICG INCORP. (827198)  
155. 5- 3-2-75 JHE

ORIGINATED BY G.E.C.  
DATE 18-11-66  
SIGNED FOR COMMITTEE *M. Talbot*

Centimetres

NZPO (82620) 4-8-67.

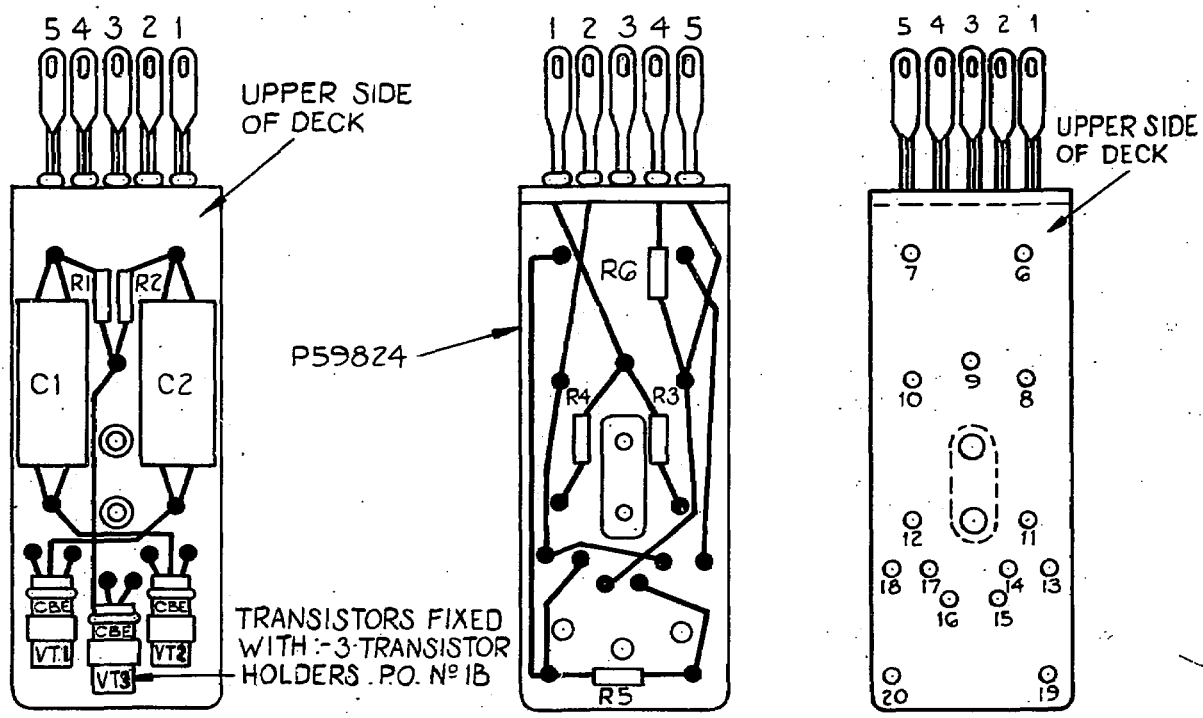
RELAY CODES & COMPONENTS LIST

GBW 16970 FIG 4

TRANSISTORISED. TONE GENERATORS. UAX NZ 13

| RELAY | BCC CODE | DIAG. FIG | NOTES | COMPT. DESIGNATION | BPO CODE | NOTES   |
|-------|----------|-----------|-------|--------------------|----------|---|
|       |          |           |       |                    |          | TONE DECK ASSY MTD ON RETARD.                 |
|       |          |           |       | R1                 |          | TAGS. 7-9 } $390\mu$                          |
|       |          |           |       | R2                 |          | 6-9 } $\pm 5\%$                               |
|       |          |           |       | R3                 |          | 12-9 ELECTROSYL } $6.8K$                      |
|       |          |           |       | R4                 |          | 11-9 TR4 TYPE } $\pm 2\%$                     |
|       |          |           |       | R5                 |          | 19-20 OR EQUIV. } $(2.2K \pm 5\%)$            |
|       |          |           |       | R6                 |          | 4-10 } $(3.3K \pm 5\%)$                       |
|       |          |           |       | C1                 |          | 7-7 } GEC } $.27\mu F$                        |
|       |          |           |       | C2                 |          | 6-11 } POLYESTER } $\pm 2\%$<br>TYPE OR EQUIV |
|       |          |           |       | VT1                |          | CV9259 OR 11.17.18. } MOUNTED W/-             |
|       |          |           |       | VT2                |          | MULLARD AC128 12.13.14. } HOLDER              |
|       |          |           |       | VT3                |          | (NOTE C1) 16.15.9. } PON <sup>o</sup> 1B.     |

NOTES A SPECIAL FACTORS OF SAFETY B SPECIAL ADJUSTMENTS C CCT POINTS OF MODIFICATIONS.  
 NOTE C1. ON SOME EARLIER EQUIPMENTS CV7074, CV7001 OR LAYOUT GET 103 MAY HAVE BEEN FITTED.



Centimetres

NZPO (89620) 4-8-67.

|                             |               |  |                 |  |                 |                 |                |                                  |                |     |
|-----------------------------|---------------|--|-----------------|--|-----------------|-----------------|----------------|----------------------------------|----------------|-----|
| ISS. 1. ADVANCED NO CHANGE. | ISS 2. 3-4-67 | VT 1, 2 & 3 WERE CHANGED. NITE C1 ADDED. | ISS. 3. 21-6-67 | TRANSISTOR CODES CHANGED. NITE C1 ADDED. | ISS. 4. 19-9-70 | NOTE C1 AMENDED | ISS. 5. 4-5-71 | REPLACEMENT TCG INCORP. (89758). | ISS. 5. 3-2-75 | JHE |
|-----------------------------|---------------|--|-----------------|--|-----------------|-----------------|----------------|----------------------------------|----------------|-----|

|                      |                  |
|----------------------|------------------|
| ORIGINATED BY        | G.E.C.           |
| DATE                 | 18-11-66         |
| SIGNED FOR COMMITTEE | <i>M. Salome</i> |

RELAY CODES & COMPONENTS LIST

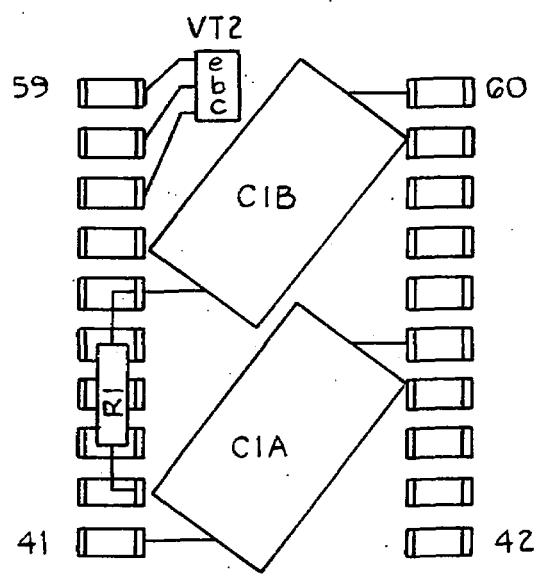
GBW 16970 FIG 3.

TRANSISTORISED. TONE GENERATORS. VAX NZ 13.

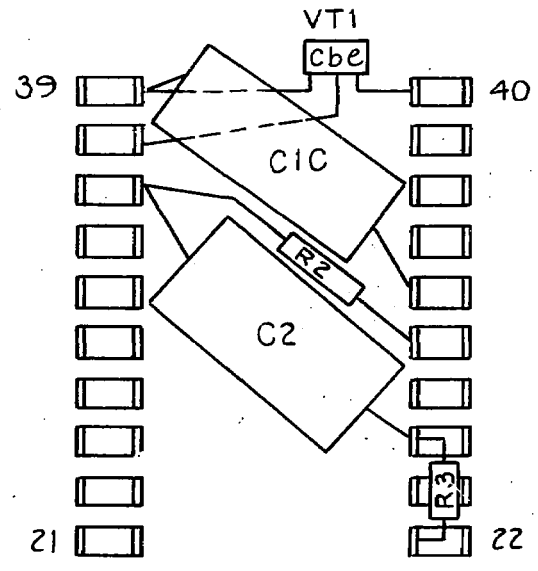
| RELAY | BCC CODE       | DIAG. FIG | NOTES | COMPT. DESIGNATION | BPO CODE                           | NOTES  |
|-------|----------------|-----------|-------|--------------------|------------------------------------|--|
|       |                |           |       |                    | <u>TONE</u>                        | <u>GENERATOR.</u>  |
| R1    |                |           |       |                    |                                    | TAG. 43-51 } ELECTROSYL { 6.8K.<br>30-35 } METAL OXIDE { ± 2. %<br>22-26 } TRS. OR EQUIV. (390 <sup>n</sup> ± 5% |
| R2    |                |           |       |                    |                                    |  |
| R3    |                |           |       |                    |                                    |  |
| C1A   |                |           |       |                    | 41-50                              | GEC { 2.4F   |
| C1B   |                |           |       |                    | 51-60                              | POLYESTER { ± 5%   |
| C1C   |                |           |       |                    | 32-39                              | TYPE (1.0.4F ± 5%  |
| C2    |                |           |       |                    | 26-                                | OR EQUIV. (1.54F ± 5%  |
| VT1   | CV 9259 DR     |           |       |                    | 37.40.39.                          | (C1)   |
| VT2   | MULLARD AC 128 |           |       |                    | 57.55.59.                          |  |
|       |                |           |       |                    | MOUNTED ON STRIP CONNEXION TPI95/C |  |

NOTES A SPECIAL FACTORS OF SAFETY B SPECIAL ADJUSTMENTS C CCT POINTS OF MODIFICATIONS.

NOTE C1. ON SOME EARLIER EQUIPMENTS CV7074, CV7001 OR GET 103 MAY HAVE BEEN FITTED.



SIDE "B"



SIDE "A"

|                    |     |
|--------------------|-----|
| ISSUE, 1.          | APP |
| DESCRIPTION OF     |     |
| RE-3 WAS DIF.      |     |
| ISS. 21- 3-4-67    |     |
| ISS. ADVANCED      |     |
| NO CHANGE          |     |
| ISS. 31- 21-6-67   |     |
| TRANSISTOR CODES   |     |
| CHANGED. NOTE C1   |     |
| ADDED.             |     |
| ISS. 4- 19-9-70    |     |
| NOTE C1 AMENDED    |     |
| ISS. 5- 4-5-71     |     |
| REPLACEMENT        |     |
| TCG. INCOR.        |     |
| (83758)            |     |
| ISS. 5- 3-2-75 JHE |     |

|                      |                  |
|----------------------|------------------|
| ORIGINATED BY        | G.E.C            |
| DATE                 | 18. 11. 66       |
| SIGNED FOR COMMITTEE | <i>M. Malone</i> |

Centimetres

25

30

NZPO (832968) 4-8-67.