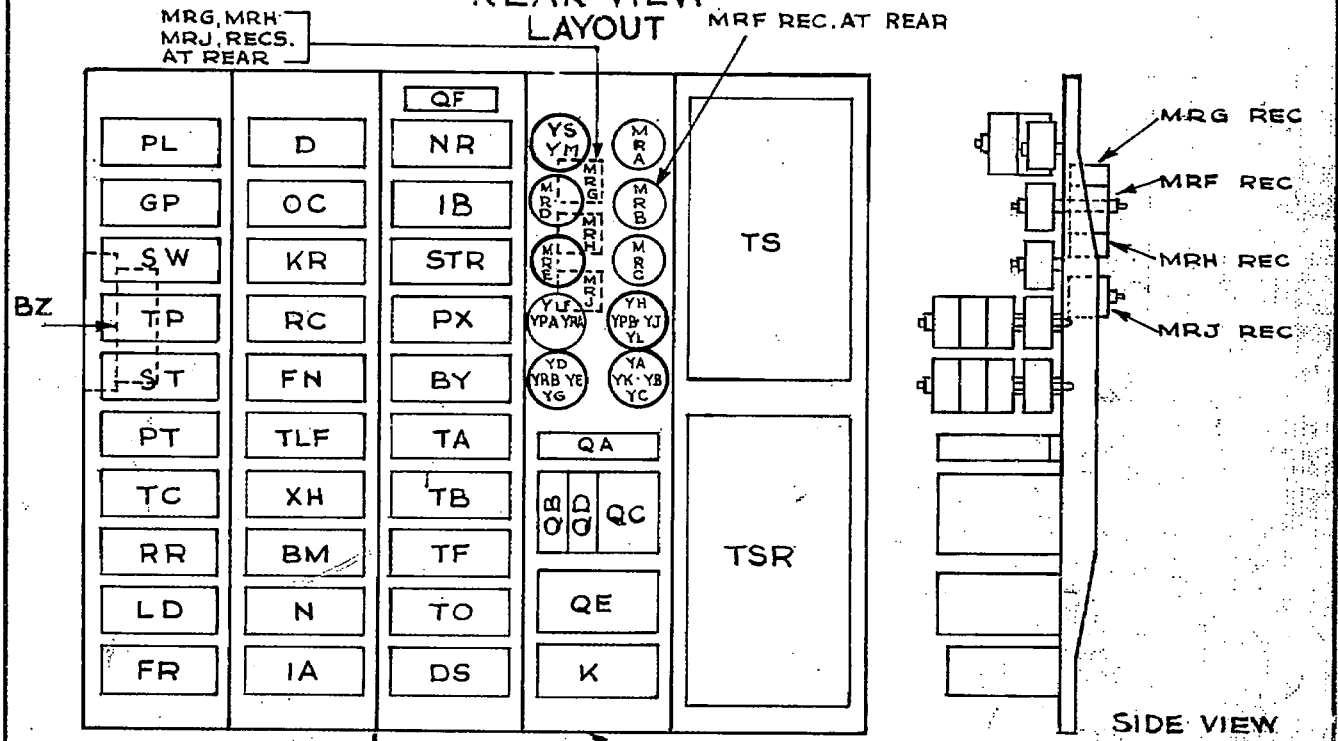


RELAY CODES & COMPONENTS LIST, GBW 11580  
FINAL SELECTOR MAINTENANCE TESTER  
REGULAR P.B.X. AND TOLL

RELAY	BCC CODE	DIA FIG	NOTES	COMPT DESIGNATION	BPO CODE	NOTES
GP	2018			YA	Nº 9	
XH	4073			YB	Nº 12	
DS	60089 P			YC	Nº 12	
				YD	Nº 12	
				YE	Nº 12	
K	733			YF	Nº 12	
				YG	Nº 12	
BY	6236			YH	Nº 12 A	
PX, TO, TF, TLF	6300			YJ	Nº 12	
				YK	Nº	
RC	6439			YL	Nº 12	
				YM	Nº 12	
OC	72708 P			YS	Nº 12 A	
D	20482			YPA	Nº 9	
				YPB	Nº 9	
RR	6062			YQA	Nº 6	
				YQB	Nº 6	
FN	4116			YQC	Nº 6	
				YRA	Nº 9	
FR	60344			YRB	Nº 9	
N	60345			YT	Nº 12	FIG. 3 } WHEN FIG. 3 } FITTED
ST	4106			YU	Nº 12	
LD	2493			BZ	Nº 20A	
				QA, QB	MC 101	
				QD, QF	MC 101	
TR	6008C			QC	MC 102	

NOTES - A SPECIAL FACTORS OF SAFETY. B SPECIAL ADJUSTMENTS. C CCT. POINTS OR MODIFICATIONS.

REAR VIEW LAYOUT



NOTE - THE REAR EQUIPMENT LAYOUT MAY SHOW VARIATIONS BUT WILL ALWAYS BE SUCH THAT THE WIRING RUNS GIVEN ON THE G.B.W. DIAGRAM WILL APPLY.

NZPO  
(69234)  
14-10-63 BC

ISSUE 1. 1963 APP YR WAS N°12A Y T YU ADDED. Y M REPOS. N°3. ISS 2. 9. 10. 1963 NO CHANGE ISS ADVD ONLY. ISS 3. 17. 2. 64. Note RE. REAR EQUIP LAYOUT GRADE D. ISS 4. 16. 2. 65 TA & TB RELAYS DELETED. SEE SHT. 2 FOR NEW CODES. ISS 5 24-MARCH-65 BZ CODE ADDED ISS 6. 15-3-67 NO CHANGE ISS ADVANCED ISS 7. 26-4-67.
---

ORIGINATED BY	S.T.C.
DATE	9/7/63
SIGNED FOR COMMITTEE	L.A.J

RELAY CODES & COMPONENTS LIST, GBW 11580

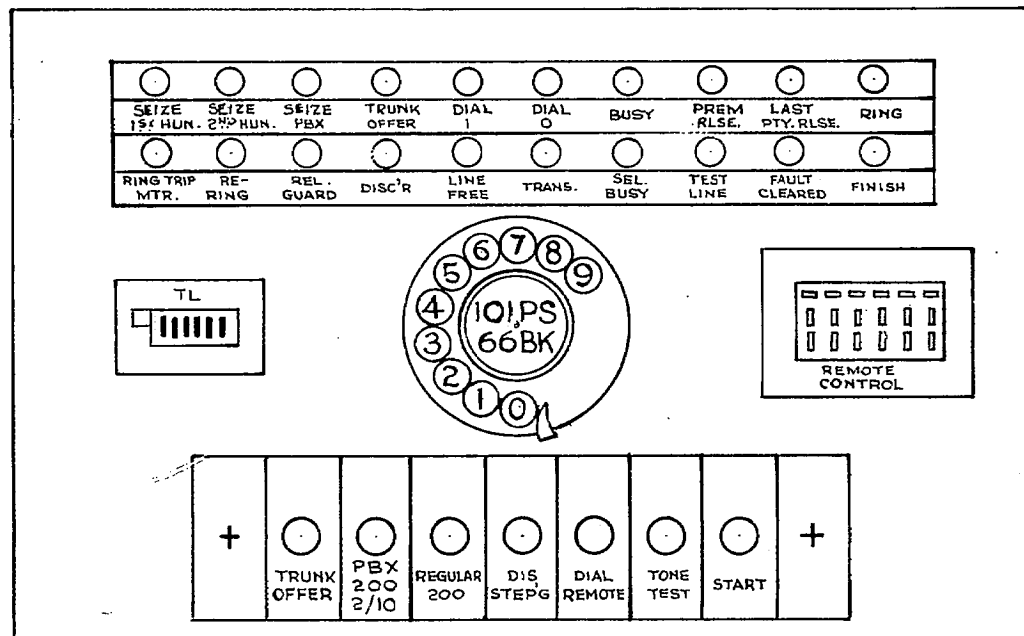
FINAL SELECTOR MAINTENANCE TESTER

REGULAR P.B.X. AND TOLL

RELAY	BCC CODE	DIA FIG	NOTES	COMPT DESIGNATION	BPO CODE	NOTES
STR SW	1051			QE	MC 103	
BM	6051			TS	2/8/12A SEL <sup>R</sup>	ON 2/80 BANK
PL, PT	10301			TSR	2/8/12A "	" 2/80 "
TC	6010			MRA	1/12 AZ	
IA	6100			MRB	1/12 AZ	
IB	2022			MRC	1/12 AZ	
KR	60082			MRD	2N/6AZ	
NR	HS706		B	MRE	1/12 AZ	
TA, TB	14732			MRF	2/2 AZ	
TRUNK OFFER	68	KTO		MRG	1/1 AZ	
P.B.X. 200 2/10	296	KPX		MRH	2N/6AZ	
REGULAR 200	289	KRF		MRJ	2N/6AZ	
TEST TONE	68	KTT	KEYS	JKA	PAINTON	S 18 MFS (CAT. N° 311065)
DIS. STEP'G	207	KDS		TL	N° 21 F	
DIAL REMOTE	68	KDR		LPA TO LPY	N° 2/6 V	LAMP
START	207	KS			N° 1	LAMP CAP
					N° 18	DIAL MTG.
				ADA	N° 12 FA	DIAL WITH NUMBER PLATE
						SUITABLE FOR NEW ZEALAND

NOTES - A SPECIAL FACTORS OF SAFETY. B SPECIAL ADJUSTMENTS. C CCT. POINTS OR MODIFICATIONS.

LAYOUT



CONTROL PANEL LAYOUT

NZPO

ISSUE 1. 1963	APP	199.7 4-12-74 JHE
MRA.D CODES CORRECTED.		
T-S, TSR ADDED		
ISS 2. 9-10-63		
MRG WAS 1/12AZ		
ISS 3. 11-2-64		
NO CHANGE.		
ISSUE ADVANCED		
ISS 4. 16-2-65		
TA & TB RELAYS ADDED.		
ISS 5		
24 PARACH 65		
NO CHANGE		
ISS ADVANCED		
ISS 6. 15-3-67		
'B' Note Added		
AGAINST MK.		
ISS 7. 26-4-67		
REPLACEMENT		
TCG INCORP.		
(83798)		

ORIGINATED BY	S.T.C.
DATE	9/7/63
SIGNED FOR COMMITTEE	L.A.J.

