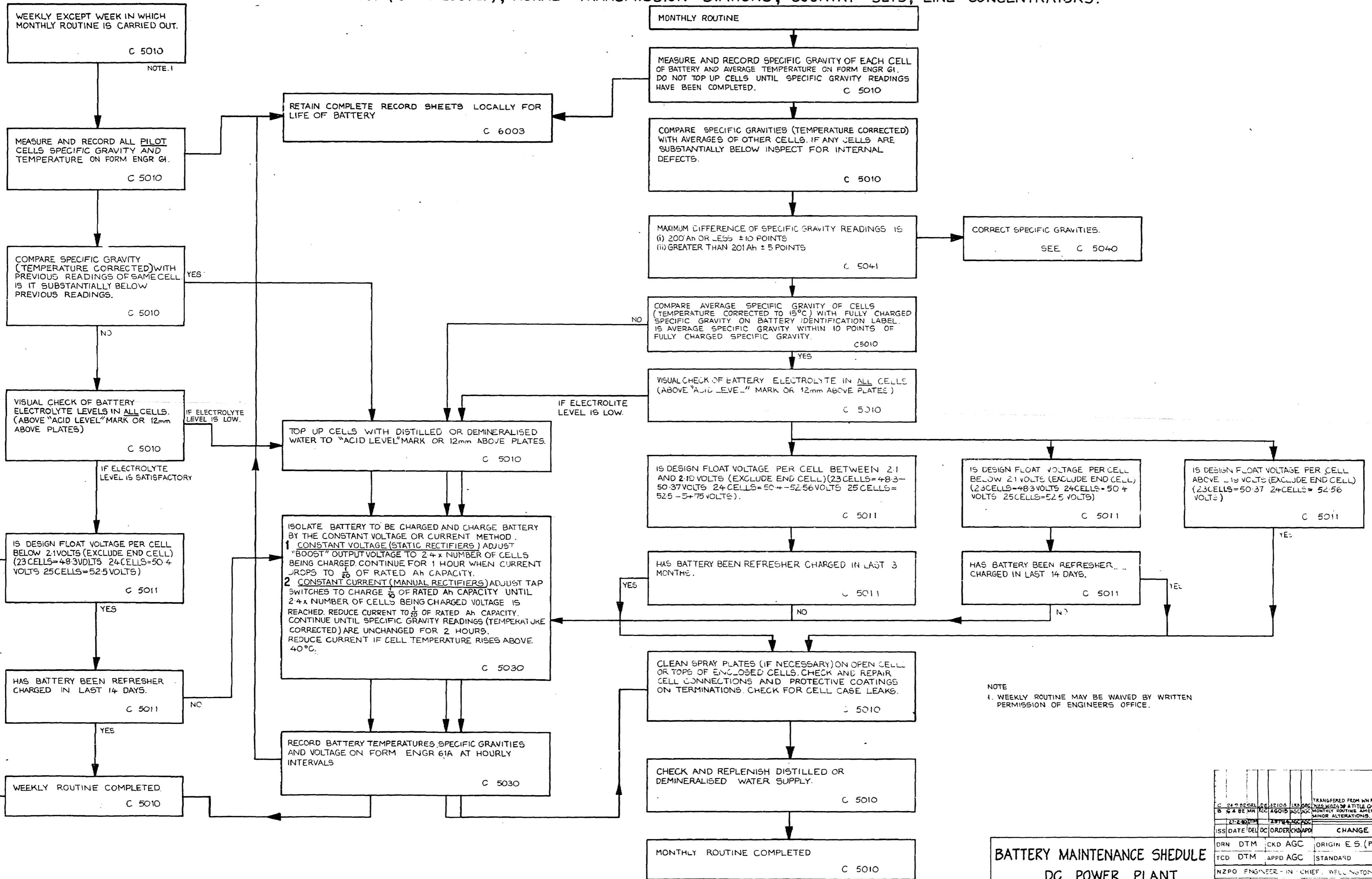


TELECOM BATTERY MAINTENANCE SCHEDULE

(E1 POWER CELLS SERIES REFERS)
EXCEPT PABX (UP TO 200Ah), RURAL TRANSMISSION STATIONS, COUNTRY SETS, LINE CONCENTRATORS.



NOTE
1. WEEKLY ROUTINE MAY BE WAIVED BY WRITTEN PERMISSION OF ENGINEERS OFFICE.

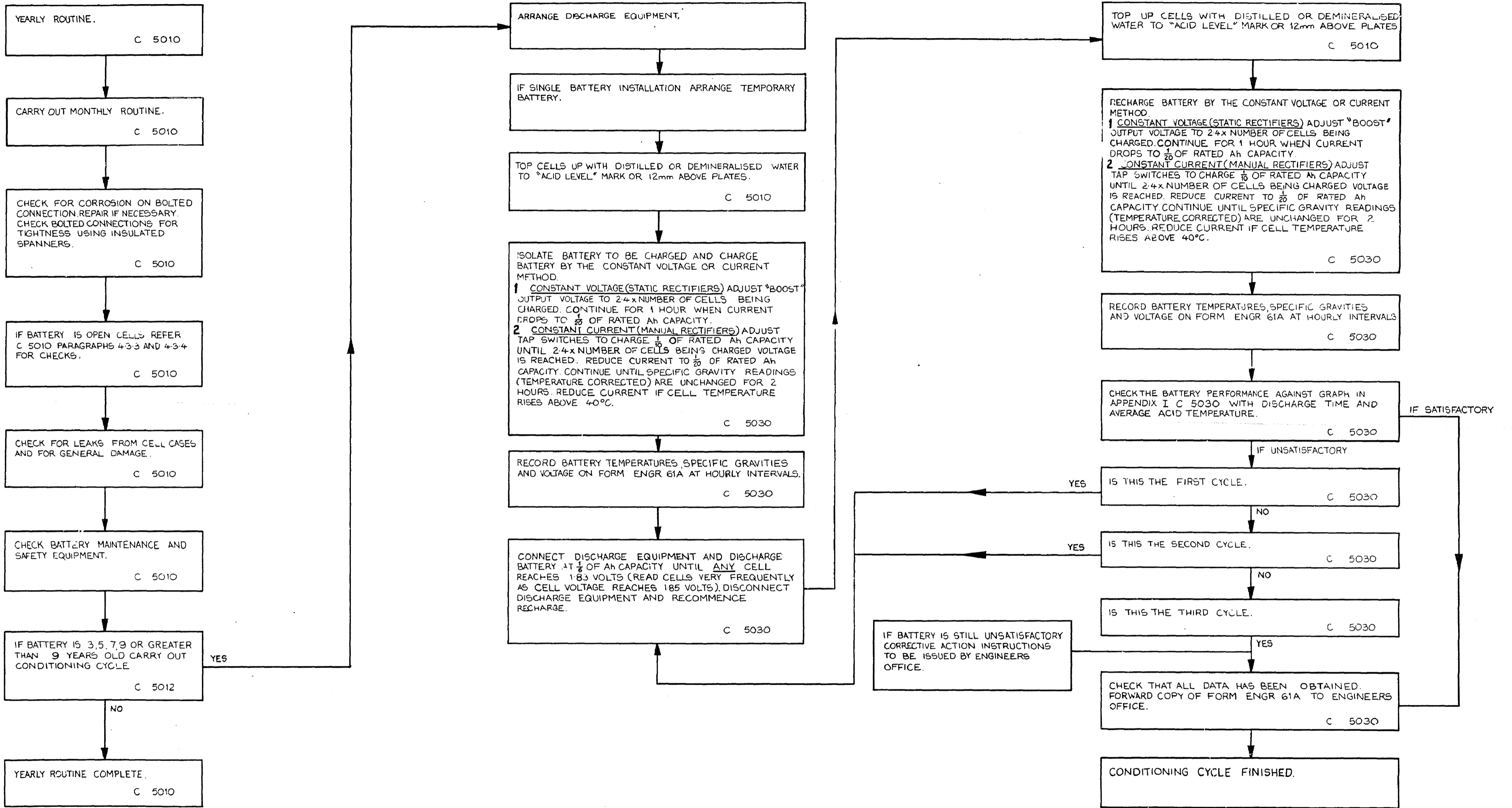
BATTERY MAINTENANCE SCHEDULE
DC POWER PLANT
(WEEKLY AND MONTHLY ROUTINE)

| | | | | | | | |
|------------------------------------|------|------|-----|----------|----------|-------|--------|
| ISS | DATE | DEL | DC | ORDER | CHK | APP | CHANGE |
| DRN | DTM | CKD | AGC | ORIGIN | ES (POW) | | |
| TCD | DTM | APPD | AGC | STANDARD | | | |
| NZPO ENGINEER-IN-CHIEF, WELLINGTON | | | | | | | |
| SH 1 OF 2 | | | | | | 42438 | |
| SIZE A1 | | | | | | | |

BATTERY MAINTENANCE SCHEDULE

(EI POWER CELLS SERIES REFERS)

EXCEPT PABX (UP TO 200Ah), RURAL TRANSMISSION STATIONS, COUNTRY SETS, LINE CONCENTRATORS



| | | | |
|------------------------------------|----------|------------------|--------|
| ISS DATE | DEL DC | ORDER/QUANT | CHANGE |
| DRN DTM | CKD AGC | ORIGIN E-S (POW) | |
| TCD DTM | APPD AGC | STANDARD | |
| NZPO ENGINEER-IN-CHIEF, WELLINGTON | | | |
| SHT 2 OF 2 | | 42438 | |
| SIZE A1 | | | |

BATTERY MAINTENANCE SCHEDULE
DC POWER PLANT
(YEARLY ROUTINE)