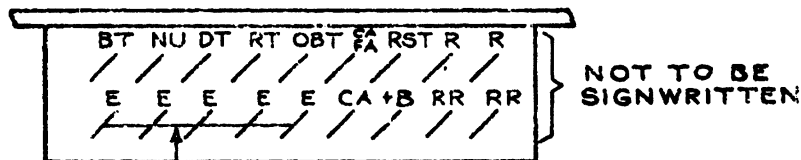


| | | | | | |
|------------|-----|-------|-----|----|------|
| METER ROUT | PG | TIME | S&Z | FA | RLSE |
| TEST | ALM | PULSE | PU | | |

FIG. 12

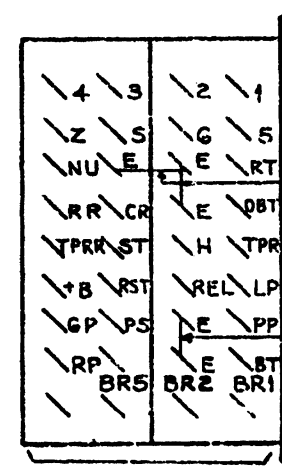


| | | | | | | | | |
|-------|-------|-------|-------|------|----|-----|-------|-------|
| BUSY | NU | DIAL | RING | OVER | CA | RST | RING | RING |
| TO NE | TO NE | TO NE | TO NE | FLOW | | +B | IN RR | IN RR |
| ETH | ETH | ETH | ETH | BT | | | ODD | EVEN |

FIG. 13

A UNIT

| |
|---------------------|
| METER PULSE |
| NU RING TO NE TONE |
| CONT. RING |
| TP |
| +B MST |
| PP TONE & G SEC. PP |
| REV. BUSY PLS TONE |
| BAL RING |



NOT TO BE SIGNWRITTEN

FIG. 7

B UNIT

FIG NOS REFER TO ORIGINAL COMPANY DRAWINGS

COMMON SERVICES
 TERMINAL STRIPS
 UAX. NZ. 13
 A & B UNITS

| DEL | CKD | APD | ORDER | DATE | ISS | CHANGE |
|-----|-----|-----|-------|---------|-----|--------|
| WBL | MWH | S, | 43246 | 25-5-77 | A | |

| | |
|---|---------------------------|
| N Z P O ENGINEER-IN CHIEF, WELLINGTON. | |
| REF: I.S 1130 ADM.G | ORIGIN: T-EQPT |
| 1 OF 3 | DRAWN: T-EQPT TRACED: WBL |
| A4 | 41081 |

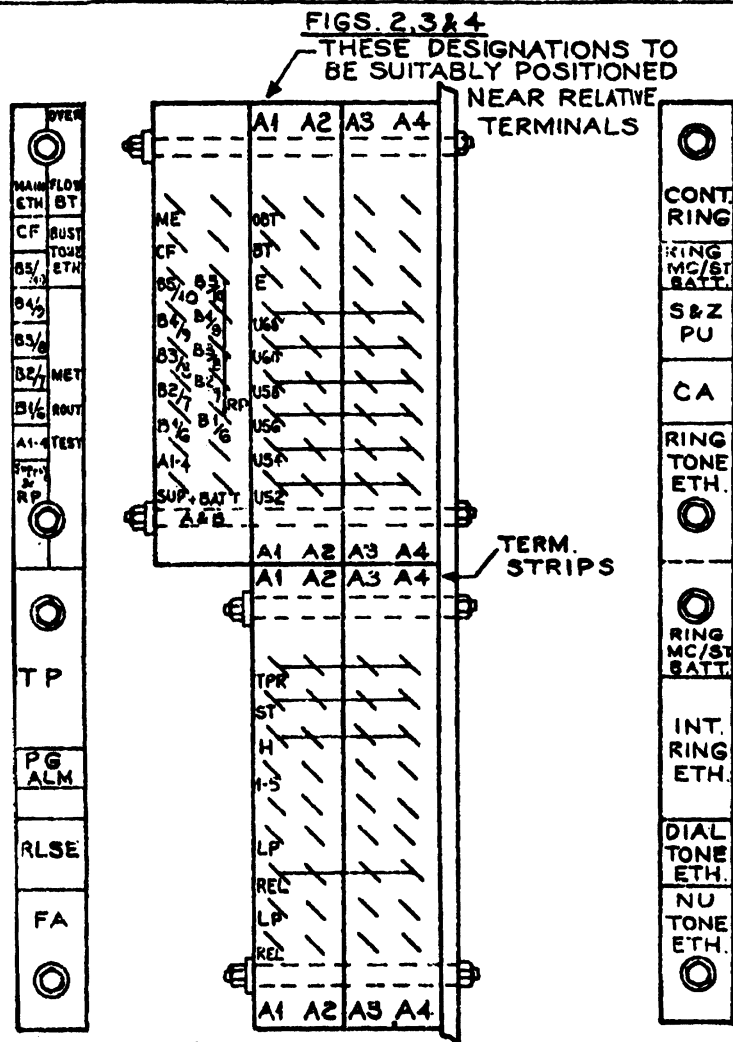


FIG. 2

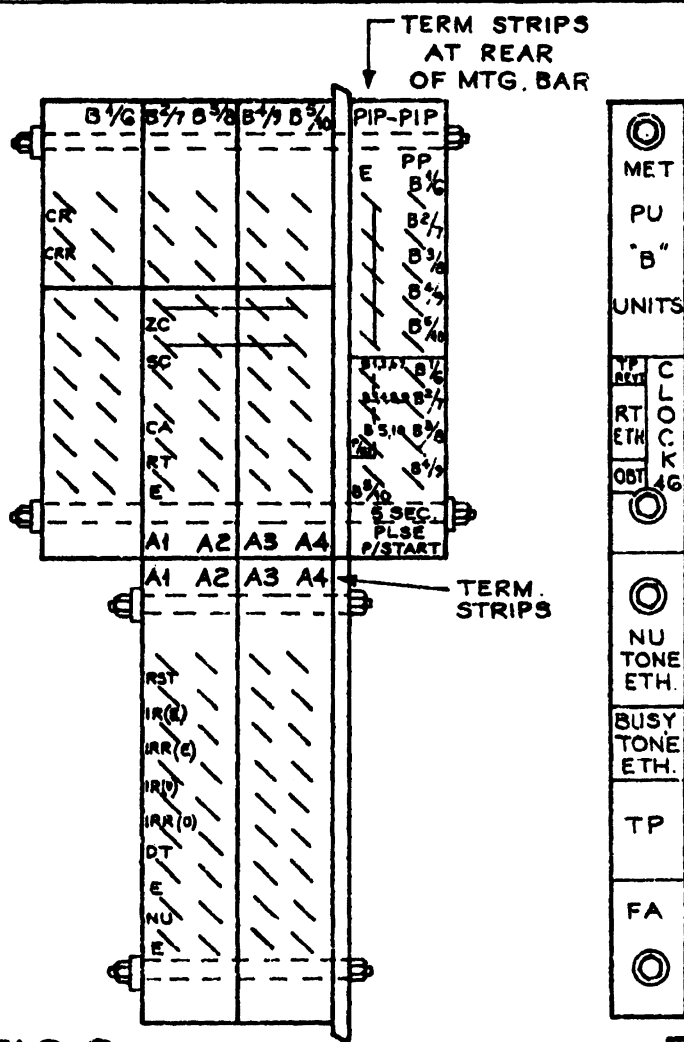


FIG. 3

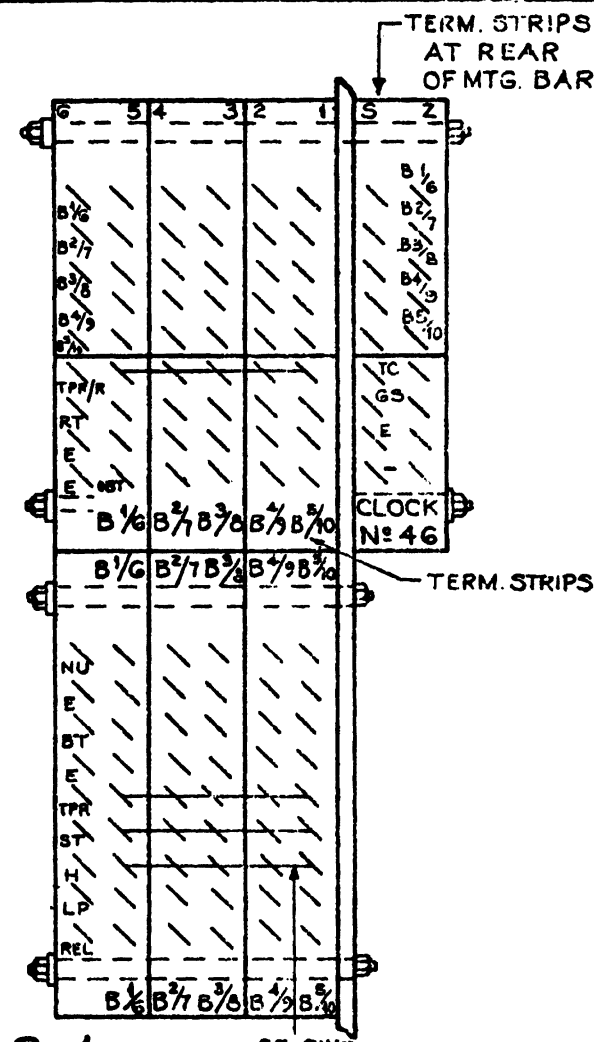


FIG. 4

25 SWG.
BTC STRAPS

C UNIT MK1 & MK2 TYPES: FIG N°S REFER TO ORIGINAL COMPANY DRAWINGS

**COMMON SERVICES
TERMINAL STRIPS**

UAX. NZ. 13

C UNITS MK 1 & MK 2

| DEL | CKD | APD | ORDER | DATE | ISS | CHANGE |
|-----|-----|-----|-------|---------|-----|--------|
| WBL | MWN | GG | 43248 | 23.5.77 | A | |

| N Z P O ENGINEER-IN CHIEF, WELLINGTON | |
|--|---------------------------|
| REF: IS 1150 ADM. 6 | ORIGIN: T-EQPT |
| 2 OF 3 | DRAWN: T-EQPT TRACED: WBL |
| A4 | 41081 |

FIGS. 2,3 & 4 THESE DESIGNATIONS TO BE SUITABLY POSITIONED NEAR RELATIVE TERMINALS

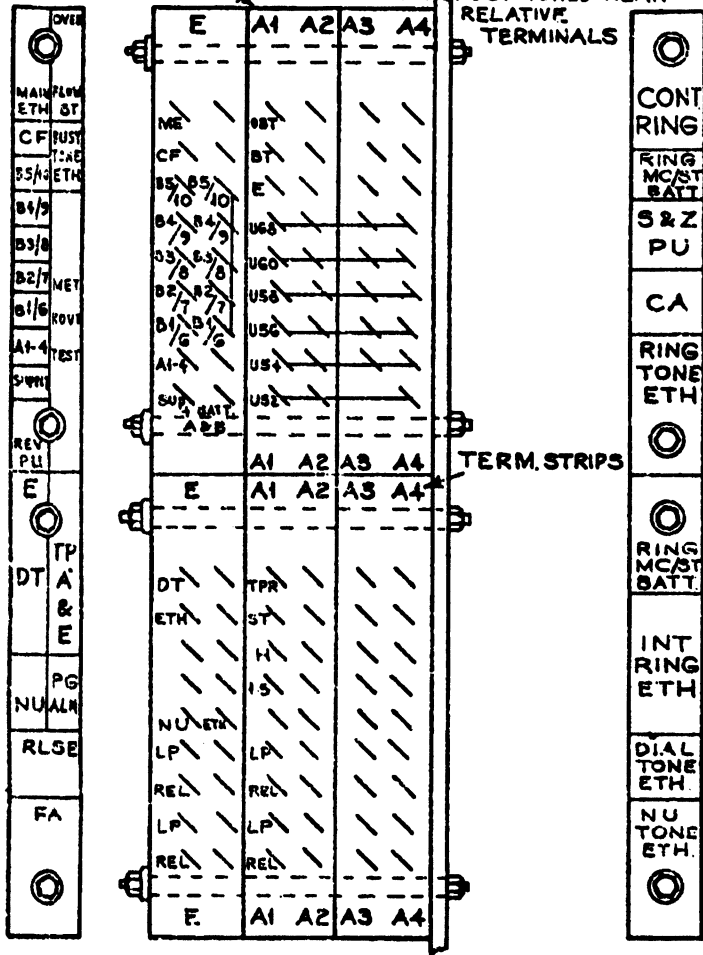


FIG. 2

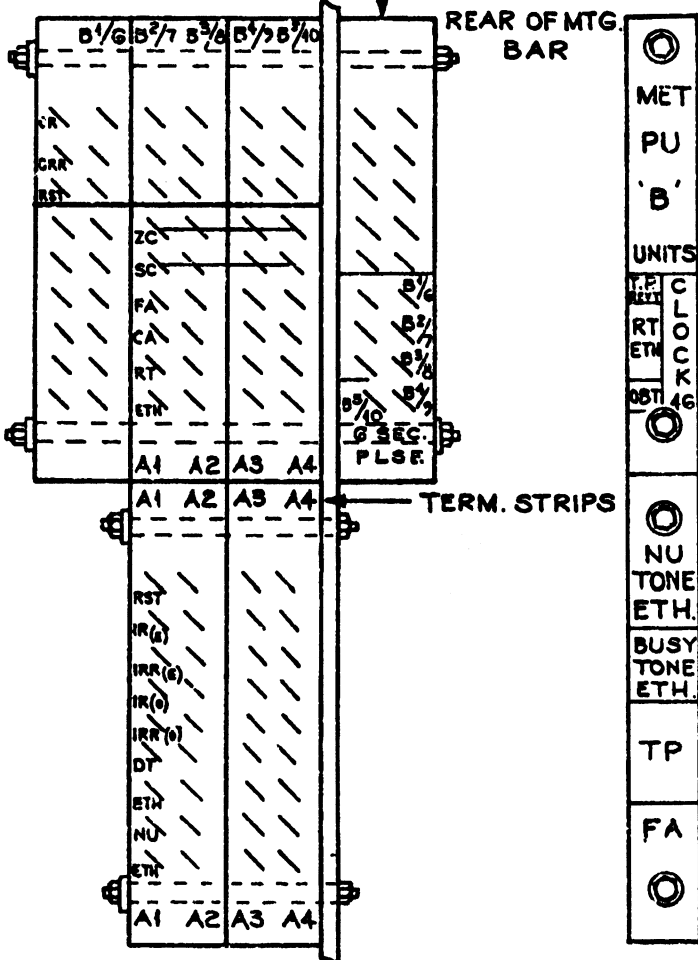


FIG. 3

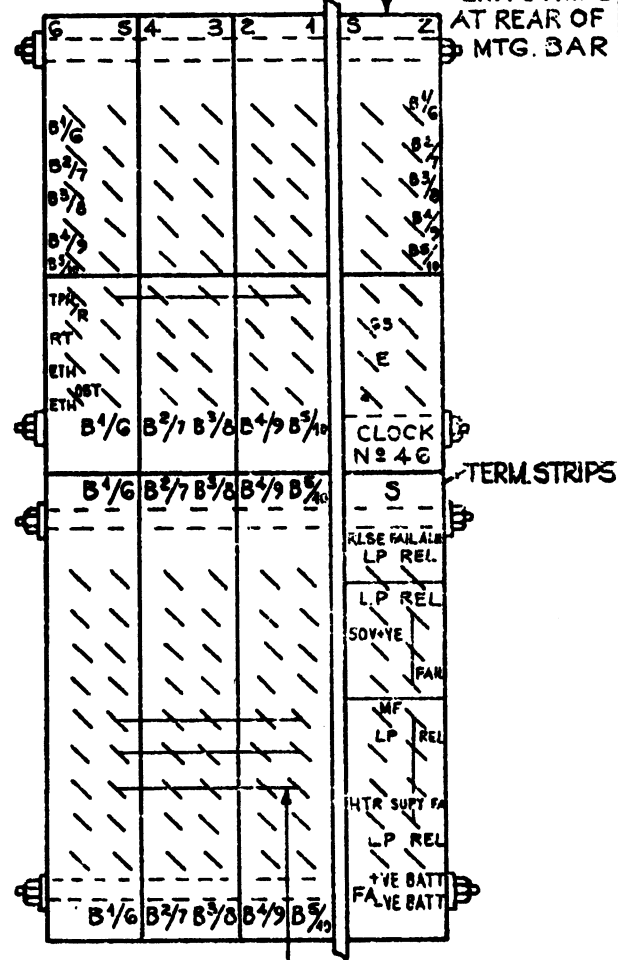


FIG. 4

25 SWG. BTC STRAPS ON FIGS. 2,3 & 4

C UNIT MK3 & MK4 TYPES

: FIG NOS REFER TO ORIGINAL COMPANY DRAWINGS

COMMON SERVICES
TERMINAL STRIPS

UAX. NZ. 13

C UNITS MK3 & MK4

| DEL | CKD | APD | ORDER | DATE | ISS | CHANGE |
|-----|-----|-----|-------|---------|-----|--------|
| WBL | MWH | GG | 43248 | 28-5-77 | A | |

| | |
|-------------------------------|----------------|
| N Z P O | |
| ENGINEER-IN CHIEF, WELLINGTON | |
| REF: IS 1130 ADM. G | ORIGIN: T-EQPT |
| 3 OF 3 | DRAWN: T-EQPT |
| A4 | TRACED: WBL |
| 41081 | |