

IMPORTANT:
BEFORE TOUCHING KEYSENDER
OR ITS ASSOCIATED FILTER
CIRCUITRY, READ THE PRECAUTIONARY
NOTES, IN THE DIAGRAM NOTES
(ALSO NOTE 1 7)

- NOTES:**
- 1 FUSING 1.5A PER CIRCUIT
 - 2 NORMAL WORKING U/LINKS IN TJ 7 & 8-10 & 11.
 - 3 BY-PASS WORKING U/LINKS IN TJ 8 & 9-11 & 12
 - 4 FOR WIRING SEE RELEVANT RCS DRAWING.
 - 5 ALL WIRING NOT OTHERWISE SPECIFIED TO BE 0.5mm.
 - 6 RELAY PU IS DIFFERENTIALLY CONNECTED
 - 7 1st DIGIT, 2nd DIGIT ETC TO BE STRAPPED TO THE REQUIRED DIAL NUMBER TERMINAL DIGITS IN EXCESS OF REQUIRED NUMBER ARE LEFT UNCONNECTED
 - 8 FOR INSTALLATION PRECAUTIONS AND TESTING SEE IS. 1222.

NOTE 1 6
SCC110 1st "DIGIT"
SCC120 2nd
SCC130 3rd
SCC140 4th
SCC150 5th
SCC160 6th
SCC170 7th
SCC180 8th

BATT FUSE [B2] SCC49
V 0.7mm
EARTH - EARTH BAR [A2] SCC46
R 0.7mm

SCC49
SCF1 - Le - R3b - Be - DS14 - Pe - PSAe - R25b - PSe -
PUa - PUz - FMe - CSe

SCC47
T1/12 - La - L23 - L2 - SCF4 - DTa - B23 - P3 - P51 - P54 - P56 - SW3

AUTOMATIC DIALLING UNIT

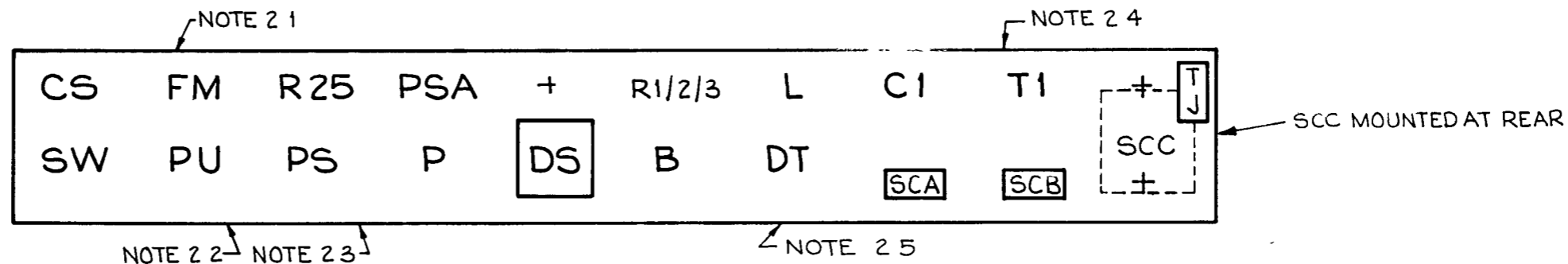
DEL	CHK	APP	ORDER	DATE	ISS	CHANGE
N Z P O						
ENGINEER-IN-CHIEF, WELLINGTON						
COY NO						
ORIGIN T-EQPT						
1 of 4 DRAWN T-EQPT TRACED RRR						
A1 40274						

50V

RELAY CODES AND COMPONENTS LIST

RELAY NAME	BCC CODE	NZ PO CODE	BPO CODE	COY CODE	NOTES	STOCK LIST N°	COMPONENT DESIGNATION	BPO CODE	COY CODE	NOTES	STOCK LIST N°	MISC COMPONENTS	NOTES	*STOCK LIST N°
B	B72097					WS	R1	9		600 Ω	KB 291B	TERM STRIP	SCC	LH 205
CS	HSD 704				B	LDG8	R2	9		800 Ω	KB 327	BRACKET	121	LH 138
DT	B1069					WS	R3	9		1000 Ω	KB 343			
FM	B1433					WS	R25	12		1300 Ω	KB 368			
L	B5476					WS	R4 - R14			2 2K Ω 1/4 W 5%	ER 229	TERM STRIP	SCA, SCB (BPO 176A)	LH 664
P	B1329					WS	R15 - R26			47K Ω 1/4 W 5%	ER 245	TERM STRIP	SCD, SCE	LH 814
PS		50312 MD6				WS								
PSA	B4016					WS								
PU	B5616P					WS	CLIP				KC 404	RES MTG POST	2"	KB9
SW	B4894P					WS	C1			4 MFD	KC 389	RES MTG POST	3 1/2"	KB9B
							C2			2 MFD	KC 330			
							C3 - C13			0 01 μF 250V	EF 272			
							D1 - D4		IN 4007		K903	MT ₅ PLATE	F151/20AH	LH 661
							D5 - D14		IN 4003		K905	TEST JACK	MK 4 2IG 12 POINT	LC148
							D15		IN 4007		K903			
												TRANSFORMER	T1 3/416A	K981
							SENDER			TMC MK3	K411			
							PLUG CONNECTOR			CONNECTOR CABLE NOT SUPPLIED	K414			
NOTES							DS	4/31A			LG 300			
A - SPECIAL FACTORS OF SAFETY B - SPECIAL ADJUST C - CCT POINTS OR MODS							JACK	89A			LG 323			

LAYOUT



NOTES

- 2 1 R25 MOUNTED AT REAR OF RELAY FM
- 2 2 SCE MOUNTED AT REAR OF RELAY PU
- 2 3 SCD MOUNTED AT REAR OF RELAY PS
- 2 4 C2 MOUNTED AT REAR OF TRANS T1
- 2 5 SCF MOUNTED AT REAR OF RELAY DT

AUTOMATIC DIALLING UNIT

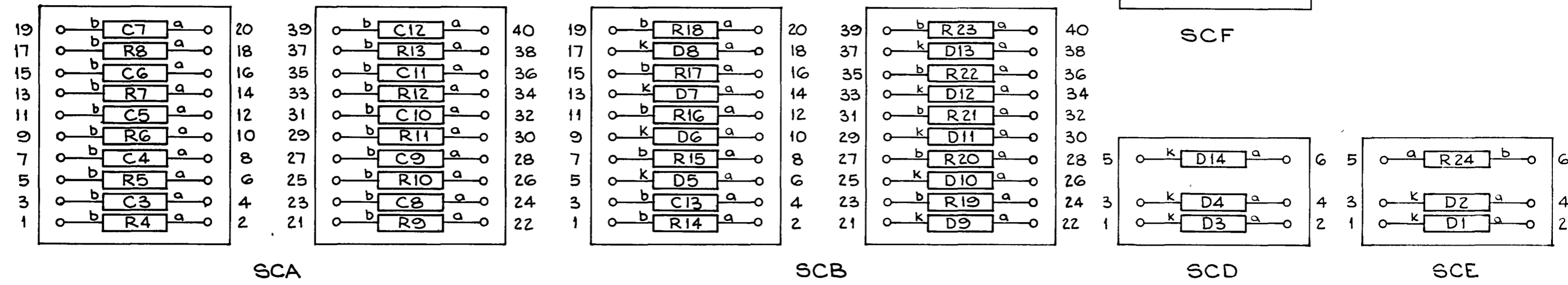
DEL	CKD	APD	ORDER	DATE	ISS	CHANGE	N Z PO ENGINEER-IN-CHIEF WELLINGTON		
RRR	WAH	RED	55694	14 4 78	A	PLUG CONN ADDED. CODES AMD SHT 1 AMD	COY N°	ORIGIN T-EQPT	
SWC	AJC	LF	189061	4 2 82	B		2 OF 4	DRAWN T-EQPT	TRACED RRR
							A 3	40274	

RELAY CODES AND COMPONENTS LIST

RELAY NAME	B C C CODE	N Z PO CODE	B P O CODE	COY CODE	NOTES	STOCK LIST N ^o	COMPONENT DESIGNATION	B P O CODE	COY CODE	NOTES	STOCK LIST N ^o	MISC COMPONENTS	NOTES	STOCK LIST N ^o

NOTES
 A - SPECIAL FACTORS OF SAFETY B - SPECIAL ADJUST C - CCT POINTS OR MODS

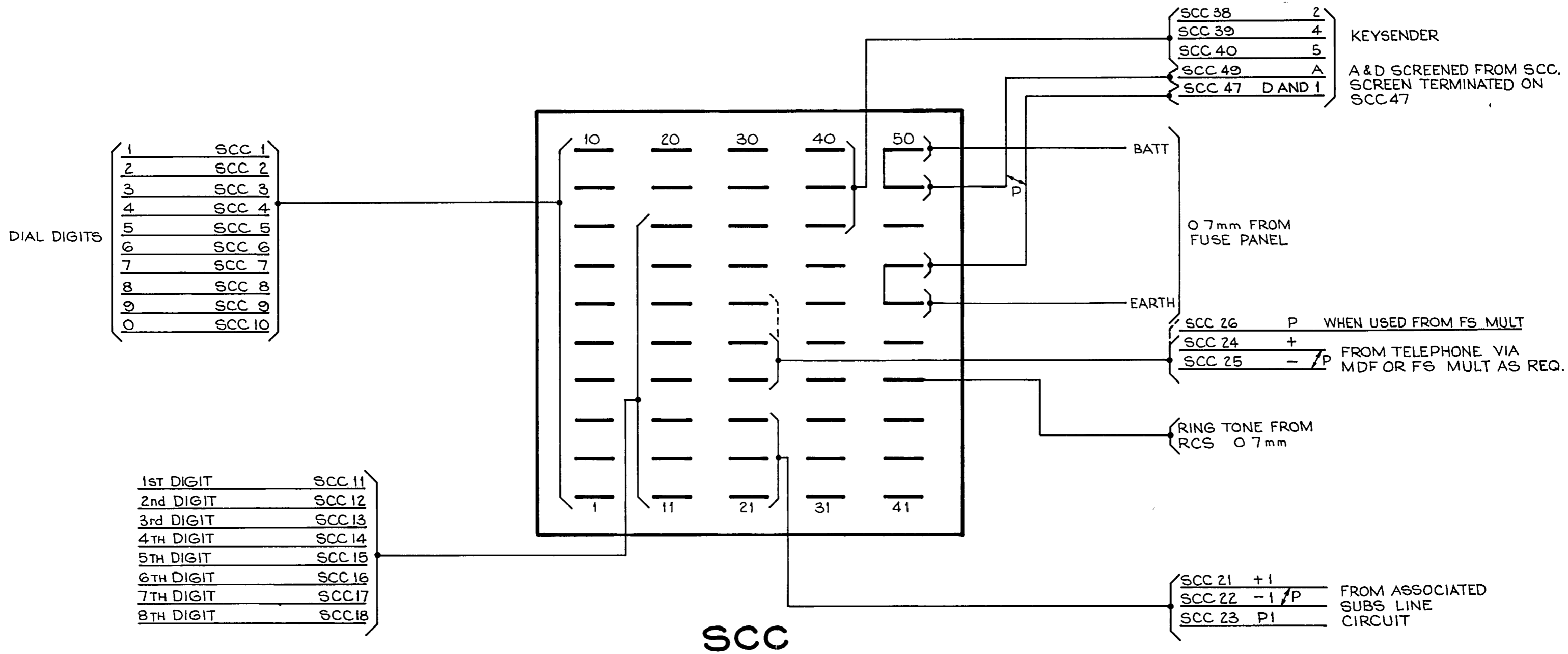
LAYOUT



MASTER TRACING 28433 SHT 1 OF 2

AUTOMATIC DIALLING UNIT

DEL	CHKD	APD	ORDER	DATE	ISS	CHANGE	N Z PO
RRR	WAH	RED	55694	14 4 78	A		ENGINEER-IN-CHIEF WELLINGTON
SWC	AJC	LF	189001	4 2 82	B	SHTS T & Z AMD	COY N ^o .
							ORIGIN T-EQPT
							3 of 4
							DRAWN T-EQPT
							TRACED RRR
							A 3
							40274



DIAL DIGITS

1	SCC 1
2	SCC 2
3	SCC 3
4	SCC 4
5	SCC 5
6	SCC 6
7	SCC 7
8	SCC 8
9	SCC 9
0	SCC 10

1st DIGIT	SCC 11
2nd DIGIT	SCC 12
3rd DIGIT	SCC 13
4th DIGIT	SCC 14
5th DIGIT	SCC 15
6th DIGIT	SCC 16
7th DIGIT	SCC 17
8th DIGIT	SCC 18

SCC

KEYSENDER
A & D SCREENED FROM SCC.
SCREEN TERMINATED ON
SCC 47

0.7mm FROM
FUSE PANEL

SCC 26 P WHEN USED FROM FS MULT
SCC 24 + FROM TELEPHONE VIA
SCC 25 - /P MDF OR FS MULT AS REQ.

RING TONE FROM
RCS 0.7mm

SCC 21 +1 FROM ASSOCIATED
SCC 22 -1/P SUBS LINE
SCC 23 PI CIRCUIT

AUTOMATIC DIALLING UNIT

DEL	CKD	APD	ORDER	DATE	ISS	CHANGE
RRR	WAH	RED	55694	14 4 78	A	
SWC	AJC	LF	189061	4 2 82	B	5HT5T & 2 AMD

N Z P O	
ENGINEER-IN-CHIEF, WELLINGTON	
COY NO	ORIGIN T-EQPT
4 OF 4	DRAWN T-EQPT TRACED RRR
A3	40274