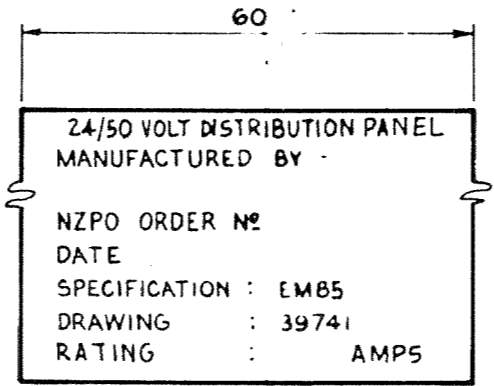
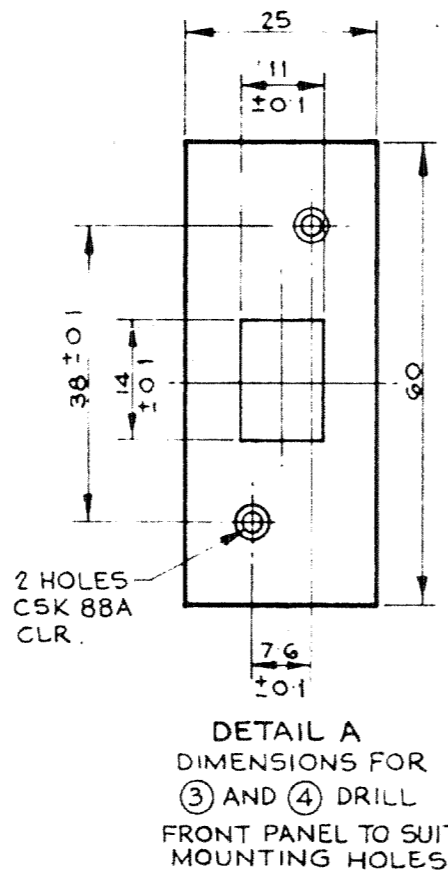
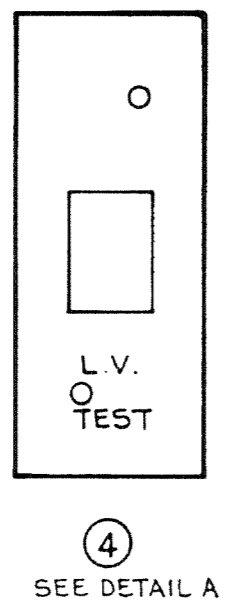
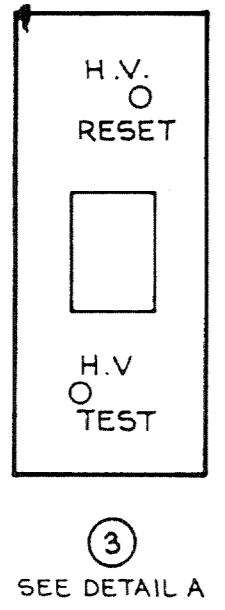
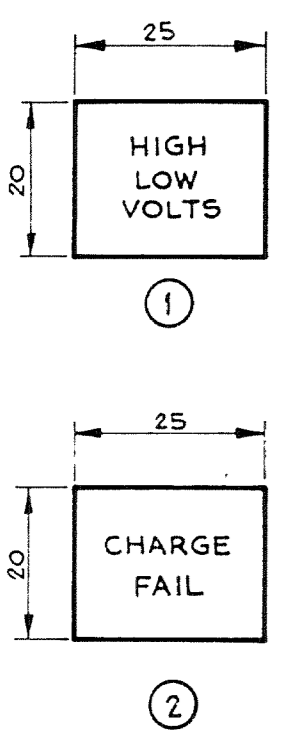
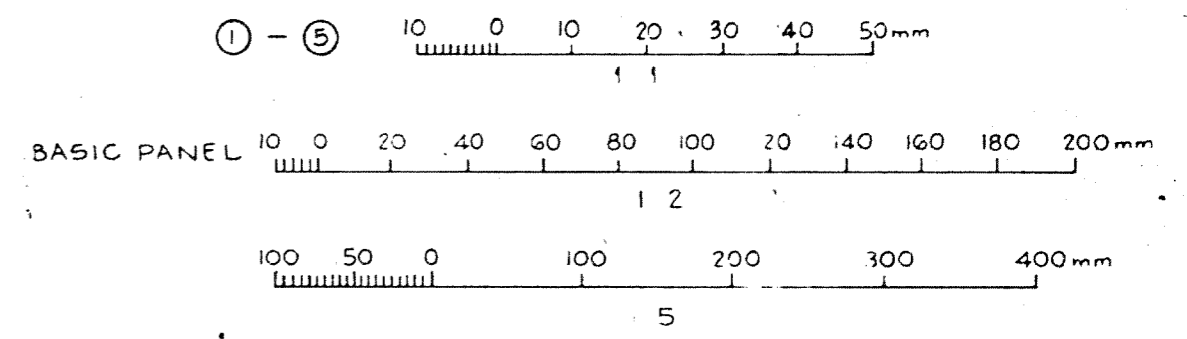


- NOTES**
- DESIGN BASED ON PANEL MANUFACTURED TO GILES AND ELLIOTT DRG N° 52/551, 3
 - CUT METER HOLES TO SUIT MATCHED PAIR VOLTMETER AND AMMETER 30 AMP PANELS WIRED TO SHT 2 USE SL AC 700 50 AMP PANELS WIRED TO SHT 3 USE SL AC 701
 - WHEN AMMETER IS EQUIPPED WITH AN EXTERNAL SHUNT, MOUNT SHUNT ON CENTRE LINE SHOWN USING PORCELAIN BUSBAR INSULATORS
 - MOUNTING CENTRE FOR VOLTAGE MONITOR UNIT WHICH MOUNTS ON INSIDE OF DOOR IN ACCORDANCE WITH DETAIL C FOR FURTHER DETAILS REFER TO DRG NZPO 39742 AND NOTES PR 2103
 - MOUNTING POSITION FOR INSULATED TERMINAL BLOCK FOR EXTERNAL ALARM AND CONTROL WIRING
 - MOUNTING POSITION FOR INSULATED TERMINAL BLOCK REFERRED TO IN NOTE 3 ON SHEET 2 AND 3
 - FOR FURTHER MANUFACTURING DETAILS SEE NOTES PR 2107
 - 'GAEL' TYPE CATCH SHOWN, OTHER TYPES MAY BE USED
 - WHEN USED AT VHF RADIO STATIONS, 6 GLASS CARTRIDGE FUSE CARRIERS ARE TO BE MOUNTED AT THE TOP OF THE BACK PANEL IN SUCH A POSITION SO AS NOT TO FOUL PANEL WIRING OR DOOR MOUNTED METERS

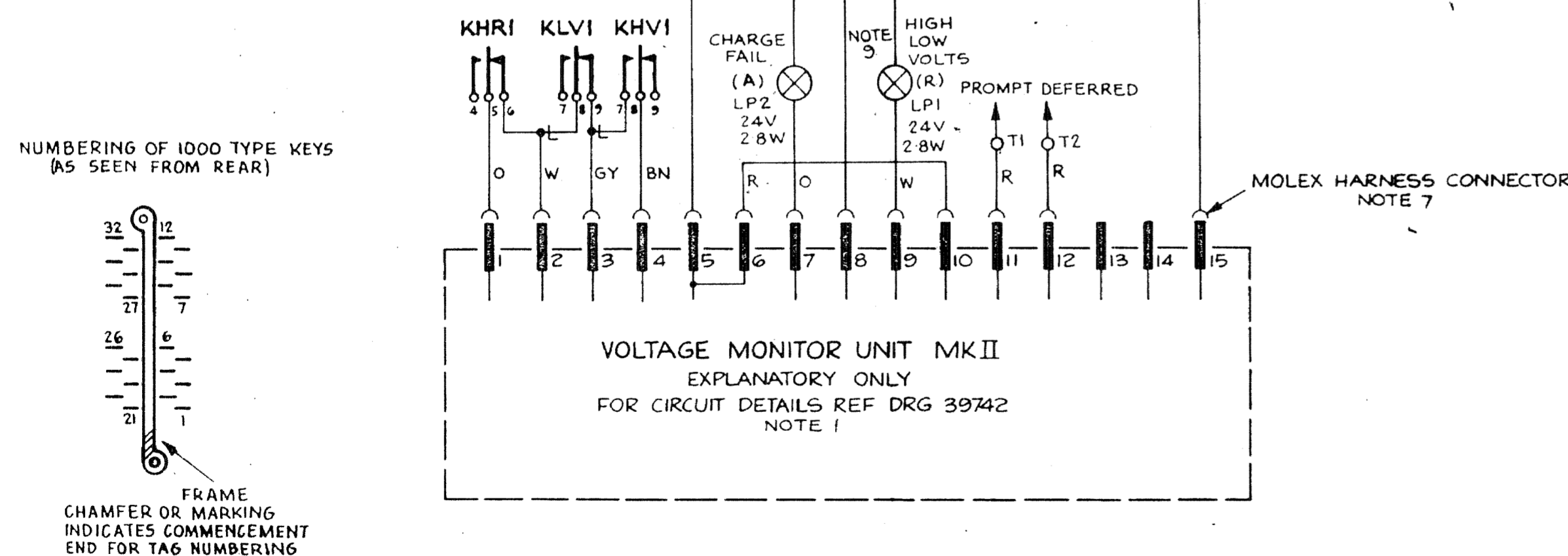
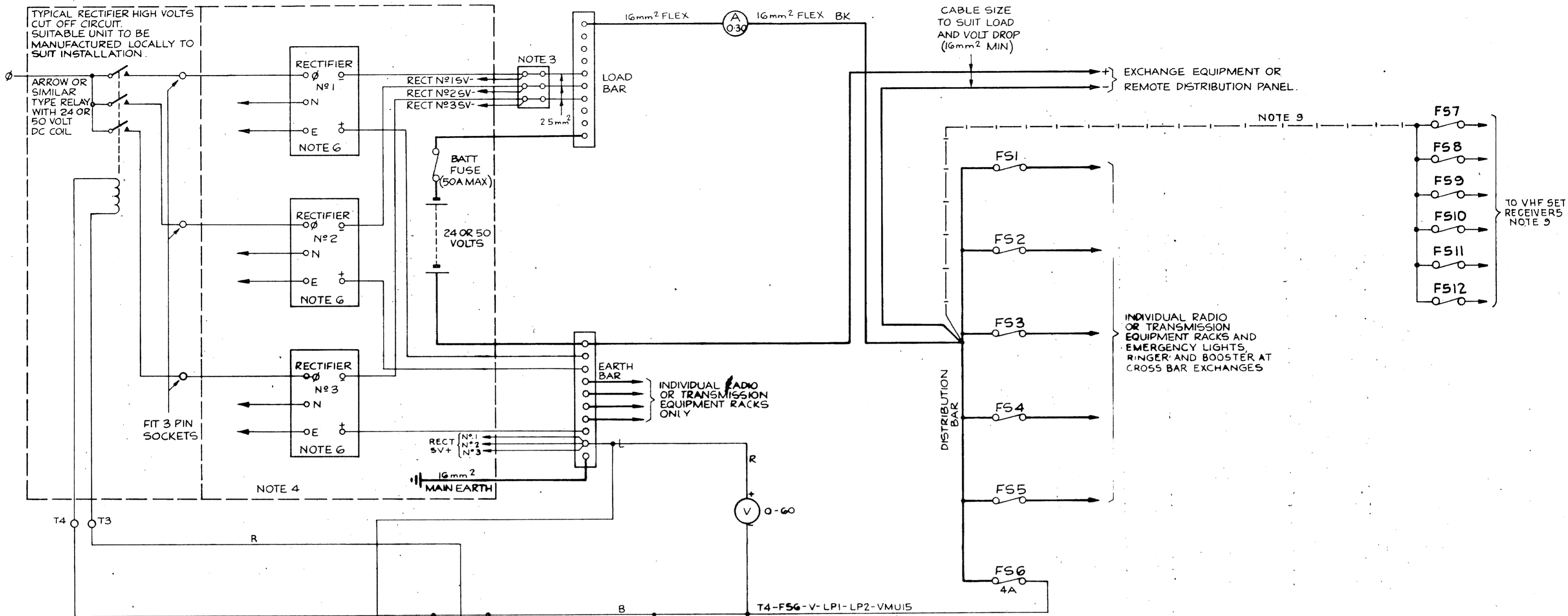


① TO ⑤ MATERIAL: 1.6mm TRAFFOLITE OR 0.5mm MIN ETCHED ALUMINIUM
 FINISH: BLACK WITH WHITE CHARACTERS
 QUANTITY: ONE OFF EACH OR ONE COMPOSITE LABEL (DETAIL D)
 NOTES: 1 ALL CHARACTERS 2.4mm UNLESS OTHERWISE STATED
 2 LABEL(S) OVER KEY SWITCHES TO BE SCREWED IN POSITION TO ACCESS TO MOUNTING SCREWS

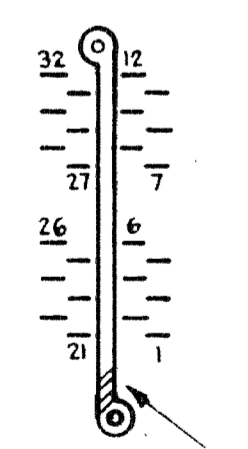


NOT TO BE USED FOR NEW WORK
 (REFER TO DRG 41194)

DC DISTRIBUTION PANEL							12/24/50 VOLT, 30/60 AMP, SINGLE BATTERY		CONSTRUCTION DETAILS	
DEL	CKD	APD	ORDER	DATE	ISS	CHANGE		NZPO		
RIL	LRB	DIB	77760	23.8.72	A			ENGINEER-IN-CHIEF WELLINGTON		
KM	LRB	GBC	74175	13.11.75	B	NOTE 3 1-3 NEG BAR & NAME PLATES ADDED		COY N°	ORIGIN E-M	
SAJ	LRB	GMR	155438	30.3.77	C	GABLE TERM (DETAIL E) ADDED		1 OF 3	DRAWN E-M	
AGO	LRB	GBC	144168	30.9.77	D	REVERTED TO ISS B CONDITION		A2	39741	



NUMBERING OF 1000 TYPE KEYS (AS SEEN FROM REAR)



FRAME CHAMFER OR MARKING INDICATES COMMENCEMENT END FOR TA6 NUMBERING

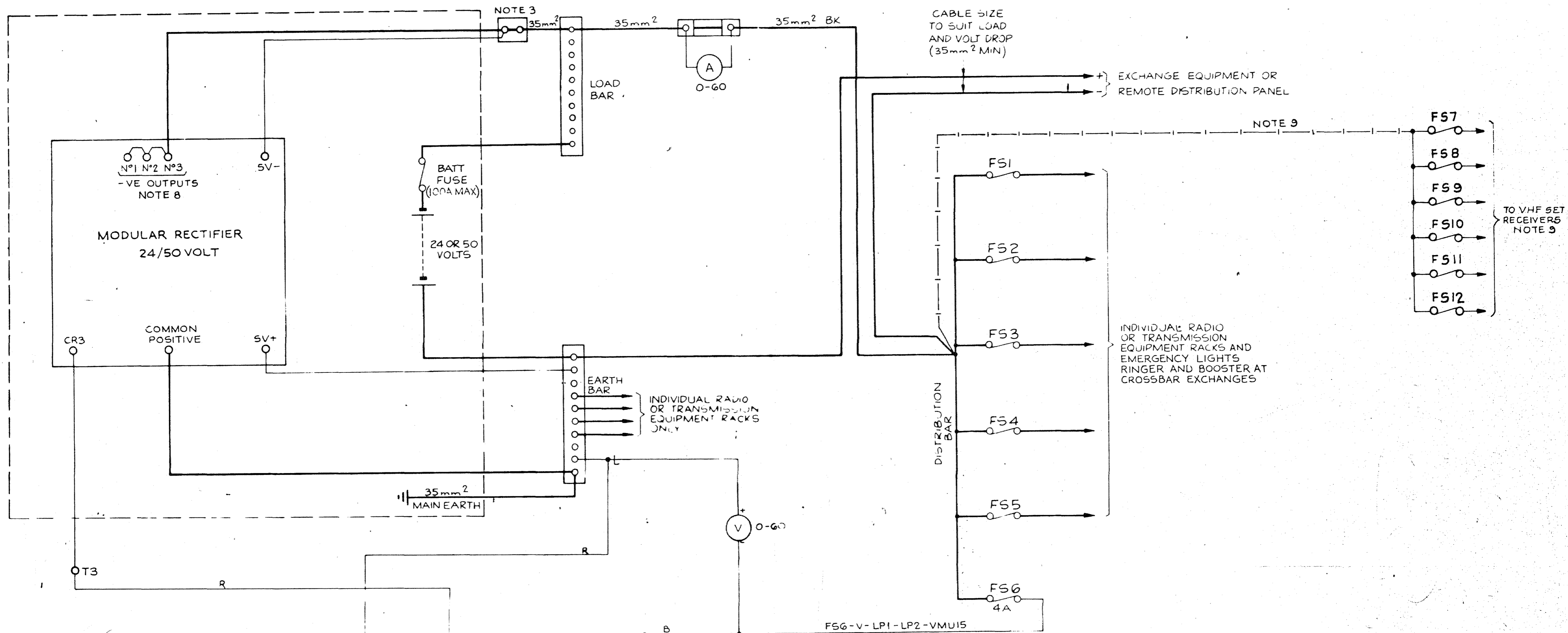
NB SPRING POSITIONS ARE COUNTED WHETHER EQUIPPED OR NOT

HIGH VOLTS RESET (KHR)	TEST HIGH VOLTS (KHV)	TEST CHARGE FAIL & LOW VOLTS (KLV)
2	2	2

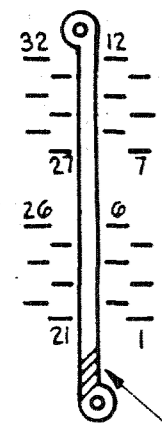
- NOTES:**
- VOLTAGE MONITOR UNIT IS TO BE SET IN ACCORDANCE WITH THE VOLTAGES SPECIFIED IN E.I. POWER GENERAL A4010. NOTES PR2103 GIVE DETAILED INSTRUCTIONS FOR ADJUSTING THE UNIT AND OPERATING THIS PANEL.
 - ALL INTERNAL WIRING IS TO BE 16/20 UNLESS OTHERWISE SPECIFIED. COLOUR CODE IS :- R-RED, B-BLUE, BK-BLACK, Y-YELLOW, G-GREEN, W-WHITE, O-ORANGE, GY-GREY, BN-BROWN.
 - INSULATED TERMINAL BLOCK INSTALLED IN PANEL TO FACILITATE SETTING UP RECTIFIER SETS. WHEN SETTING UP, REMOVE STRAP TO LOAD BAR AND CONNECT LOAD BANK TO TERMINAL BLOCK. REMOTE SENSING IS OPTIONAL.
 - TYPICAL RECTIFIER AND BATTERY ARRANGEMENT SHOWN FOR EXPLANATORY PURPOSES. ITEMS ENCLOSED BY DOTTED LINES DO NOT FORM PART OF PANEL. FOR CONSTRUCTION DETAILS SEE SHT. 1.
 - RECTIFIERS NOT TO BE OPERATED ON BOOST. BOOST POTENTIOMETERS ARE TO BE LEFT IN 'MIN' POSITION.
 - THE VOLTAGE MONITOR UNIT HAS 24V AND 50V CONNECTION POINTS. CARE MUST BE TAKEN WHEN PLUGGING IN THE HARNESS CONNECTOR THAT THE RELEVANT OPERATING VOLTAGE POSITION IS SELECTED.
 - CABLE SIZES ARE METRIC. IMPERIAL EQUIVALENTS MAY BE USED.
 - ALTHOUGH THESE PANELS ARE MANUFACTURED FOR 24/50 VOLTS, THEY CAN BE MODIFIED LOCALLY FOR 12VOLT OPERATION. MODIFICATIONS CONSIST OF :-
 INSTALLATION OF FS7 TO FS12 (GLASS CARTRIDGE FUSE CARRIERS);
 INSTALLATION OF CABLE SHOWN ;
 REPLACEMENT OF 24V LAMPS WITH 12V LAMPS;
 12V OPERATING MODIFICATIONS TO THE VOLTAGE MONITORING UNIT IN ACCORDANCE WITH DRG 39742 NOTE 3.

DC DISTRIBUTION PANEL
12/24/50 VOLT, 30AMP SINGLE BATTERY
CIRCUIT DIAGRAM

DEL	CKD	APD	ORDER	DATE	ISS	CHANGE		N Z P O	
SWC	LRB	GBC	144166	30/9/77	A	NOTE 9 ADDED NOTE 1 & TITLE AMENDED		ENGINEER-IN-CHIEF WELLINGTON	
SAU	LRB	GBC	155483	3/3/77	C	EARTH & BATTERY TERMINAL ADDED NOTE 3 DELETED		COY NO	ORIGIN: E-M
AGO	LRB	GBC	144166	30/9/77	D	REVERTED TO ISS B CONDITION		2 of 3	DRAWN: E-M
								A2	39741

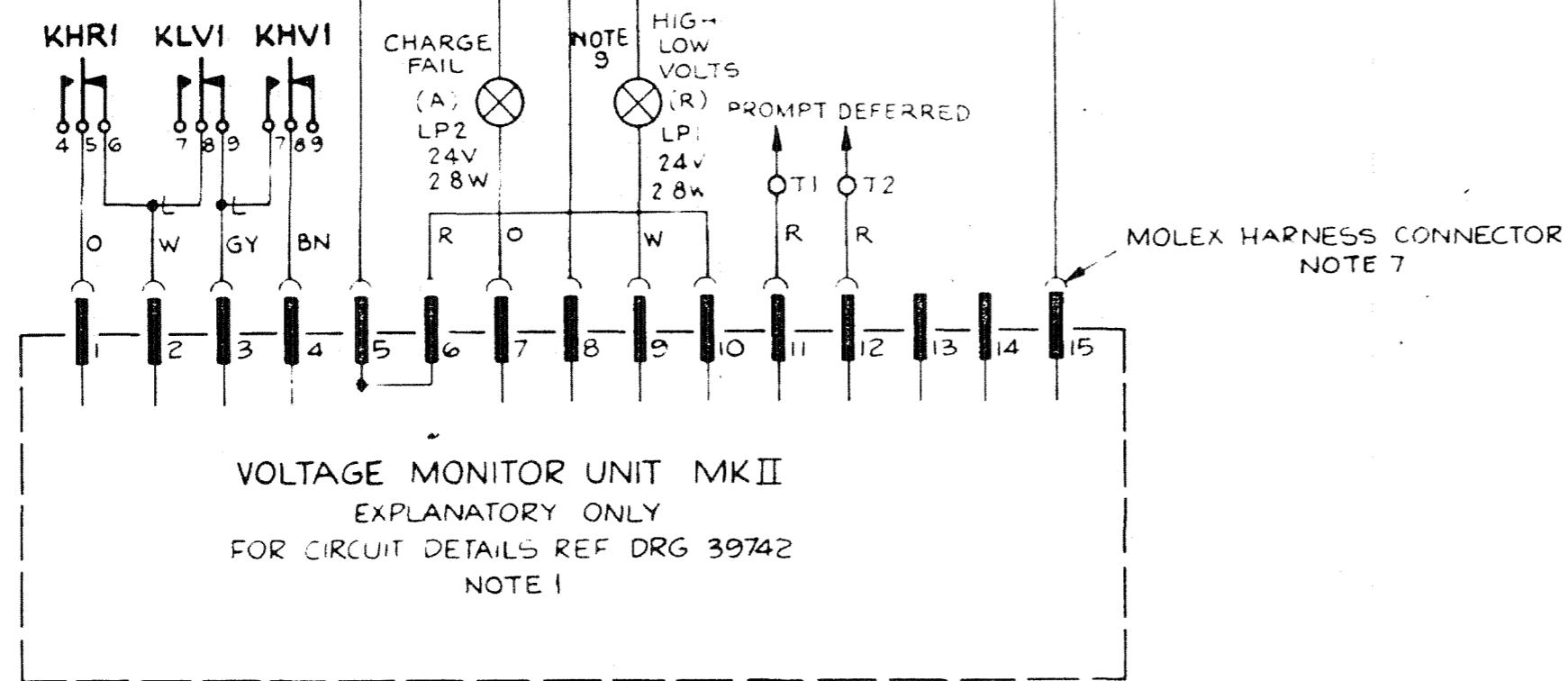


NUMBERING OF 1000 TYPE KEYS
(AS SEEN FROM REAR)

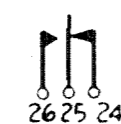


FRAME
CHAMFER OR MARKING
INDICATES COMMENCEMENT
END FOR TAG NUMBERING.

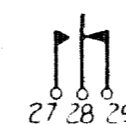
NB SPRING POSITIONS ARE COUNTED
WHETHER EQUIPPED OR NOT



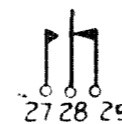
KHR2



KHV2



KLV2



HIGH VOLTS RESET (KHR)	TEST HIGH VOLTS (KHV)	TEST CHARGE FAIL & LOW VOLTS (KLV)
2	2	2

NOTES:

- VOLTAGE MONITOR UNIT IS TO BE SET IN ACCORDANCE WITH THE VOLTAGES SPECIFIED IN E1 POWER GENERAL A4010 NOTES PR2103 GIVE DETAILED INSTRUCTIONS FOR ADJUSTING THE UNIT AND OPERATING THIS PANEL.
- ALL INTERNAL WIRING IS TO BE 16/20 UNLESS OTHERWISE SPECIFIED. COLOUR CODE IS - R-RED, B-BLUE, BK-BLACK, Y-YELLOW, G-GREEN, W-WHITE, O-ORANGE, GY-GREY, BN-BROWN.
- INSULATED TERMINAL BLOCK INSTALLED IN PANEL TO FACILITATE SETTING UP RECTIFIER SETS WHEN SETTING UP, REMOVE STRAP TO LOAD BAR AND CONNECT LOAD BANK TO TERMINAL BLOCK. REMOTE SENSING IS OPTIONAL.
- TYPICAL RECTIFIER AND BATTERY ARRANGEMENT SHOWN FOR EXPLANATORY PURPOSES. ITEMS ENCLOSED BY DOTTED LINES DO NOT FORM PART OF PANEL FOR CONSTRUCTION DETAILS SEE SH1.
- CABLE SIZES ARE METRIC, IMPERIAL EQUIVALENTS MAY BE USED.
- THE VOLTAGE MONITOR UNIT HAS 24V AND 50V CONNECTION POINTS CARE MUST BE TAKEN WHEN PLUGGING IN THE HARNESS CONNECTOR THAT THE RELEVANT OPERATING VOLTAGE POSITION IS SELECTED.
- ON EARLY MODEL S.T.C. MODULAR RECTIFIER SETS, THE NEGATIVE OUTPUT IS TO BE TAKEN DIRECTLY FROM THE -VE FLOAT TERMINAL. THIS TERMINAL MUST NOT BE STRAPPED TO THE -VE BOOST TERMINAL. THE STRAPPING ARRANGEMENT SHOWN RELATES ONLY TO LATER MODEL RECTIFIER SETS. ALTHOUGH THESE PANELS ARE MANUFACTURED FOR 24/50 VOLTS, THEY CAN BE MODIFIED LOCALLY FOR 12V OPERATION. MODIFICATIONS CONSIST OF:
 - INSTALLATION OF F57 TO F512 (GLASS CARTRIDGE FUSE CARRIERS);
 - INSTALLATION OF CABLE SHOWN ;
 - REPLACEMENT OF 24V LAMPS WITH 12V LAMPS.
- 12V OPERATING MODIFICATIONS TO THE VOLTAGE MONITORING UNIT IN ACCORDANCE WITH DRG 39742 NOTE 3.

DC DISTRIBUTION PANEL
12/24/50 VOLT, 60 AMP, SINGLE BATTERY
CIRCUIT DIAGRAM

CD	AP	ORDER	DATE	BY	CHANGE	N Z P O
SW	LRB	618	177720	13 8 74	A	ENGINEER-IN-CHIEF WELLINGTON
KM	LRB	68C	141175	13 11 75	B	NOTES & TITLE AMENDED
GAJ	LRB	68E	155438	19 3 77	C	EARTH AND BATTERY TERMINAL ADDED (NOTE 2 AM12)
AGG	LRB	68C	144168	30 9 77	D	REVERTED TO ISS B CONDITION
						3 3
						A2
						RAW: E-M
						TRACED: SWC
						39741