

SHT No	SIZE	SUB-TITLE	ISSUE					
1	A1	ROUTE BARRING RELAY SET (FIG 1)	C	D	E	F		
2	A1	MODIFICATIONS TO LINE RELAY SETS. (FIGS. 2A-2E)	B	C	D			
3	A3	RCCL	C	B	E			
4	A4	SHELF JACK CONNECTIONS	C	D	E			
5	A3	MOD. FOR ROUTE BAR OVERRIDE. 100 & 300 TYPES	A					
6								
7								
8								
9								
10								
11								
12								
13								
14								
15								
16								
17								
18								
19								
20								
21								
22								
23								
24								
25								
26								
27								
28								
29								
30								

NOTES

MASTER TRACING, 338 00.

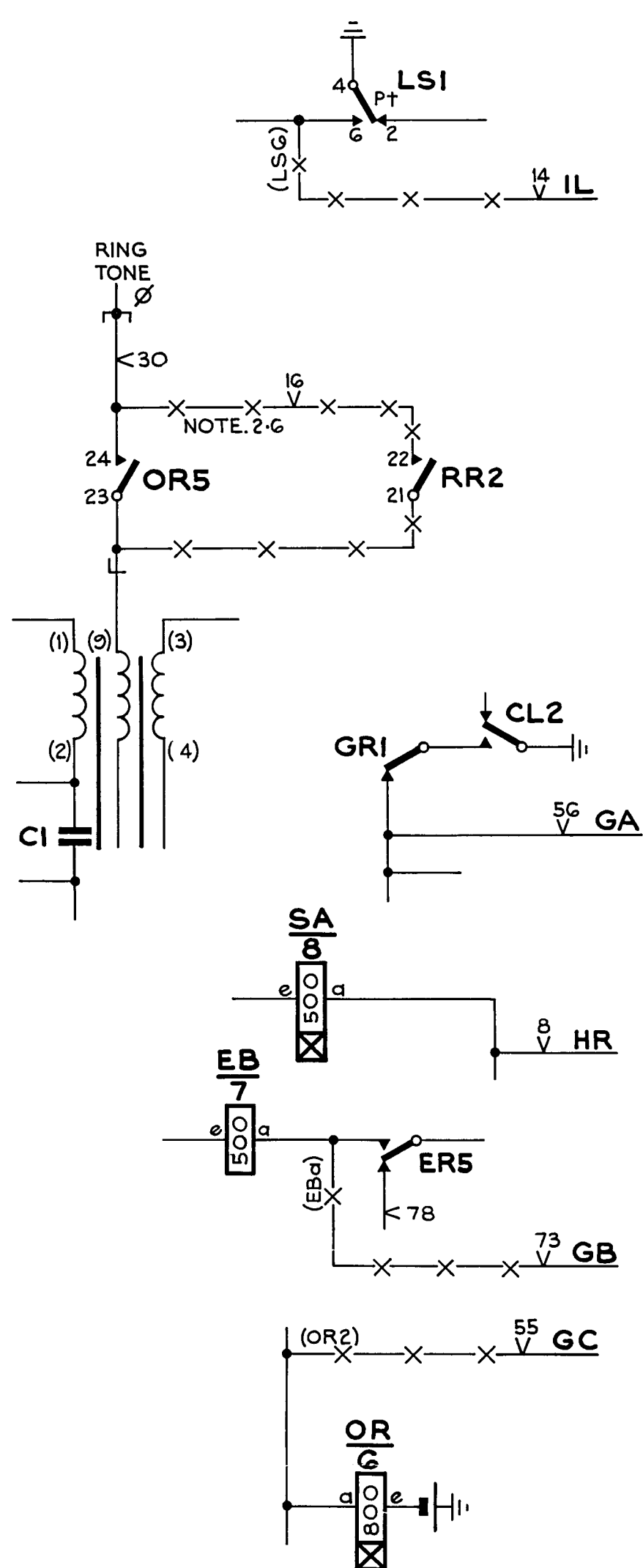
DEL	CKD	APD	ORDER	DATE	ISS	CHANGE
WBL	LRT	GFE	68391	10 3 75	C	SHTS 1,3 & 4 AMD SHT 5 & SHT IND. ADDED
RGM	LRT	GFE	68153	1 8 75	D	SHTS 1&3 AMENDED
L G	BWI	JGW	55967	27 7 76	E	SHTS IND. 1-4 AMENDED
AGO	BWI	FJM	125320	6 9 77	F	SHTS 1,2 & 4 AMD

N Z P O ENGINEER -IN-CHIEF WELLINGTON

**ROUTE BARRING CIRCUIT
FOR 100 & 300 TYPE PABX'S
(INDEX SHEET)**

COY No	IND	39020
ORIGIN T-EQPT		
DWN T-EQPT TCD. T-EQPT	A4	

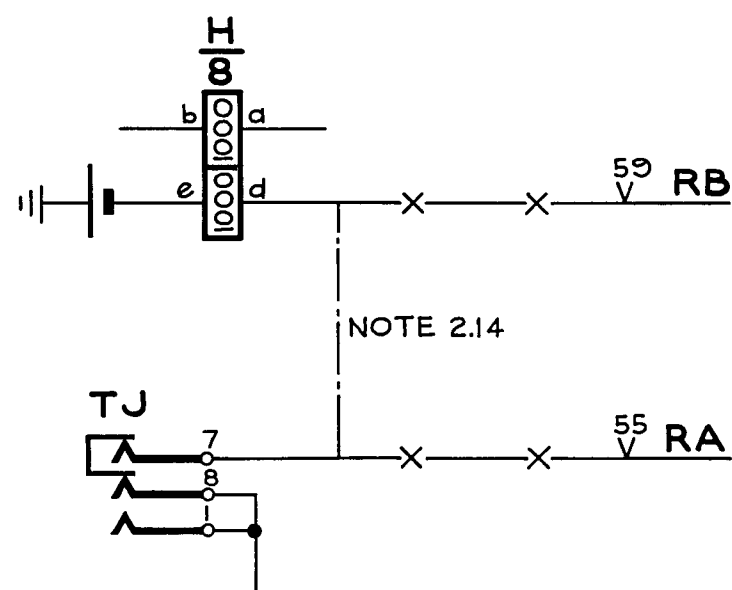
GBW 14690



- NOTES**
- 2.6 NOTE 10 (GBW 14690) CHANGED TO READ - STRAP U-POINTS 30-1G WHEN CONNECTION OF RING TONE IS REQUIRED ON CALLS EXTENDED TO LOCAL EXTENSIONS BY THE PABX OPERATOR
 - 2.7 NOTE 9 (GBW 14690) TO BE DELETED
 - 2.8 WHEN PARENT EXCH IS OTHER THAN NEC XBAR, HAVING SINGLE DIGIT ACCESS TO A CHARGEABLE ROUTE, PROVIDE CONNECTIONS -X-X- SHOWN IN FIG 2A ONLY

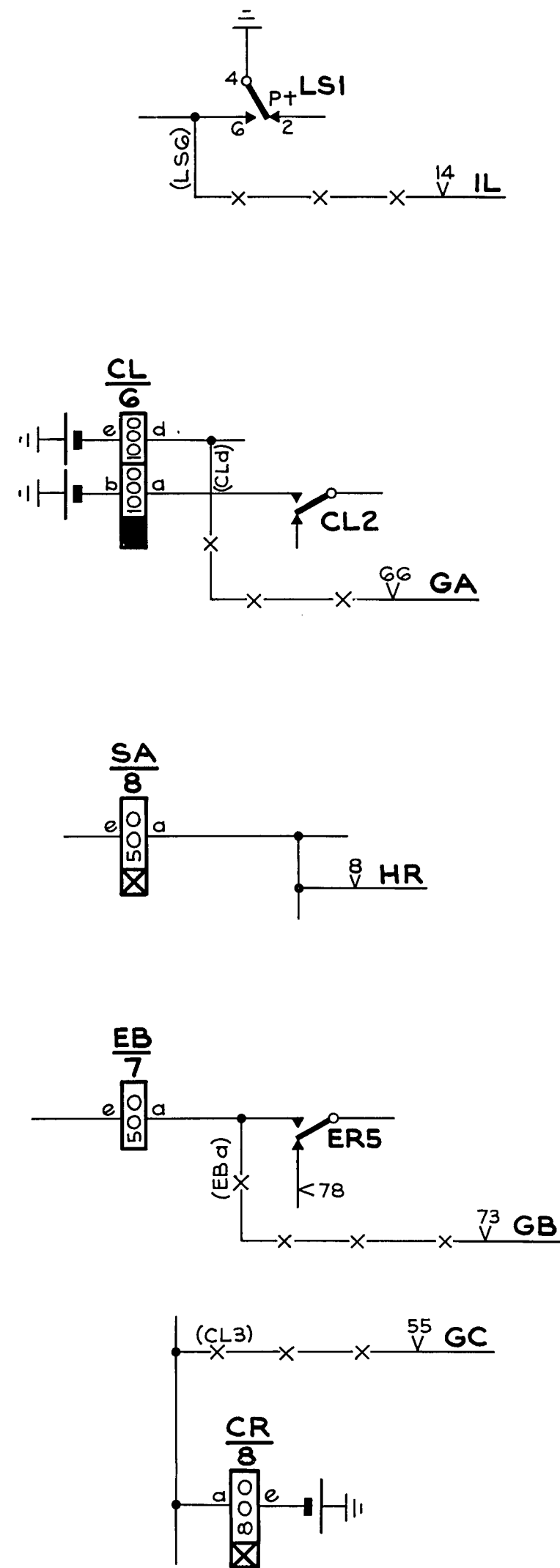
FIG. 2A
(NOTE 2.8)

FIG. 2AA
(NOTE 2.14)



- NOTE**
- 2.14 WHEN PARENT EXCH IS NEC XBAR HAVING SINGLE DIGIT ACCESS TO A CHARGEABLE ROUTE, PROVIDE CONNECTIONS -X-X- IN FIGS 2A & 2AA EXCEPT GC WIRE, & DELETE CONNECTIONS - - - - -

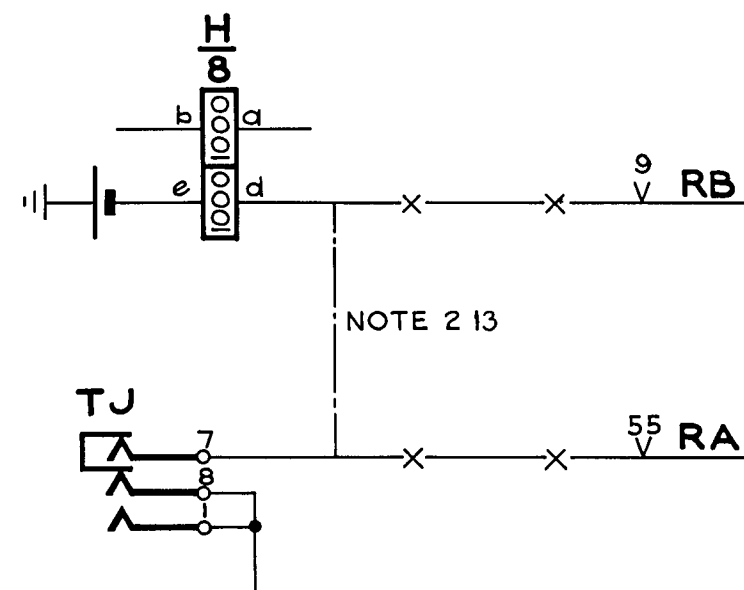
GBW 13220



- NOTE**
- 2.5 WHEN PARENT EXCH IS OTHER THAN NEC XBAR, HAVING SINGLE DIGIT ACCESS TO A CHARGEABLE ROUTE, PROVIDE CONNECTIONS -X-X- SHOWN IN FIG 2B ONLY

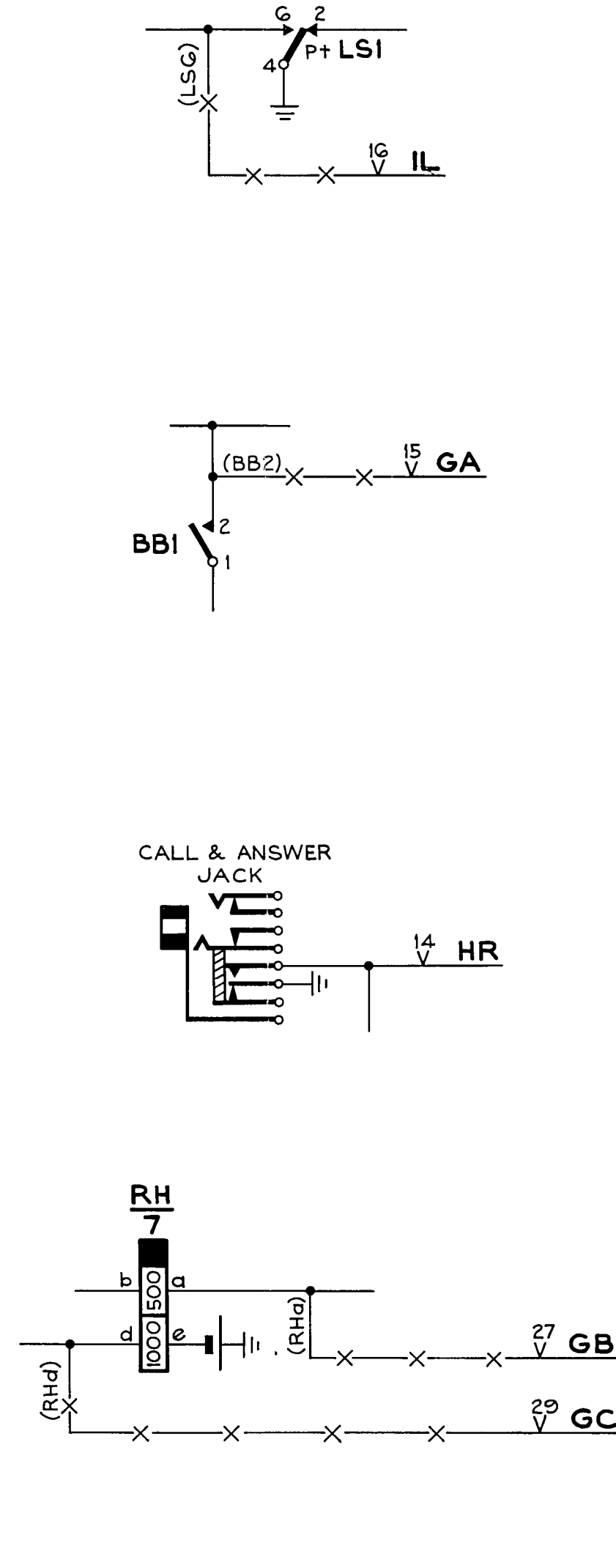
FIG. 2B
(NOTE 2.5)

FIG. 2BA
(NOTE 2.13)



- NOTE**
- 2.13 WHEN PARENT EXCH IS NEC XBAR HAVING SINGLE DIGIT ACCESS TO A CHARGEABLE ROUTE, PROVIDE CONNECTIONS -X-X- IN FIGS 2B & 2BA EXCEPT GC WIRE, & DELETE CONNECTIONS - - - - -

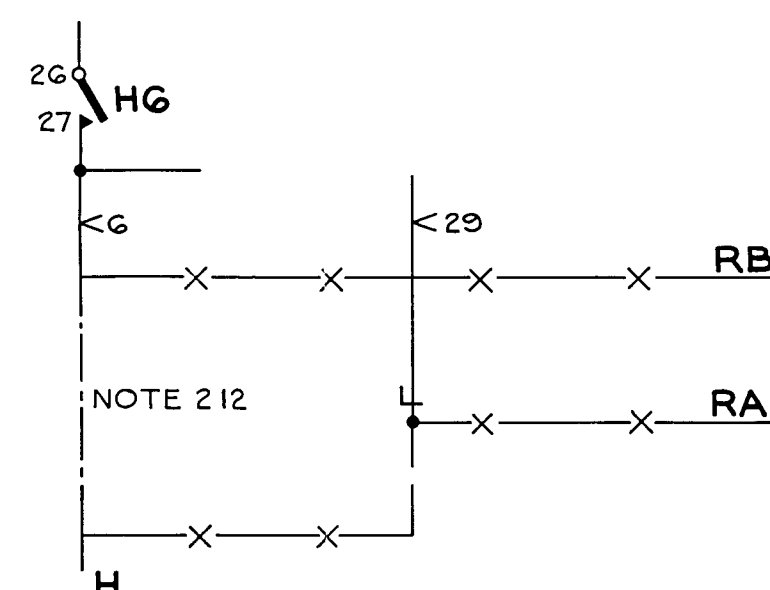
GBW 15220



- NOTE**
- 2.4 WHEN PARENT EXCH IS OTHER THAN NEC XBAR, HAVING SINGLE DIGIT ACCESS TO A CHARGEABLE ROUTE, PROVIDE CONNECTIONS -X-X- SHOWN IN FIG 2C ONLY

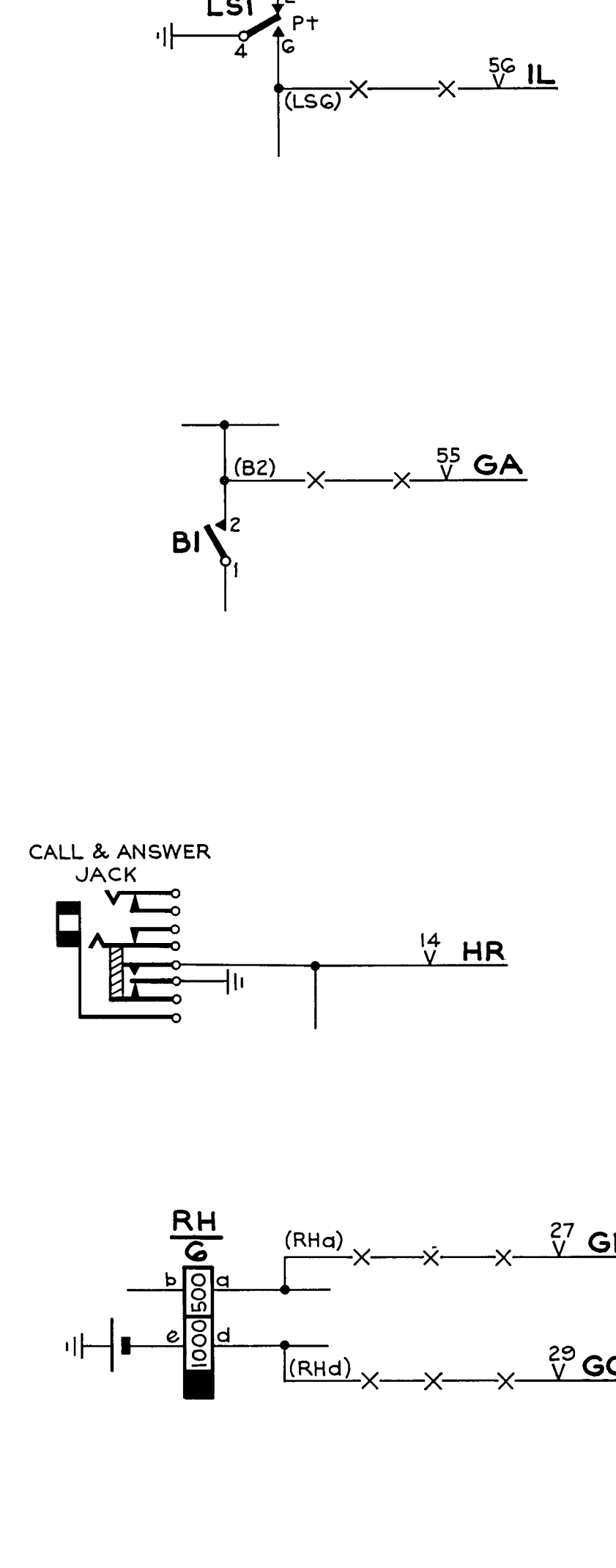
FIG. 2C
(NOTE 2.4)

FIG. 2CA
(NOTE 2.12)



- NOTE**
- 2.12 WHEN PARENT EXCH IS NEC XBAR HAVING SINGLE DIGIT ACCESS TO A CHARGEABLE ROUTE, PROVIDE CONNECTIONS -X-X- IN FIGS 2C & 2CA EXCEPT GC WIRE, & DELETE CONNECTIONS - - - - -

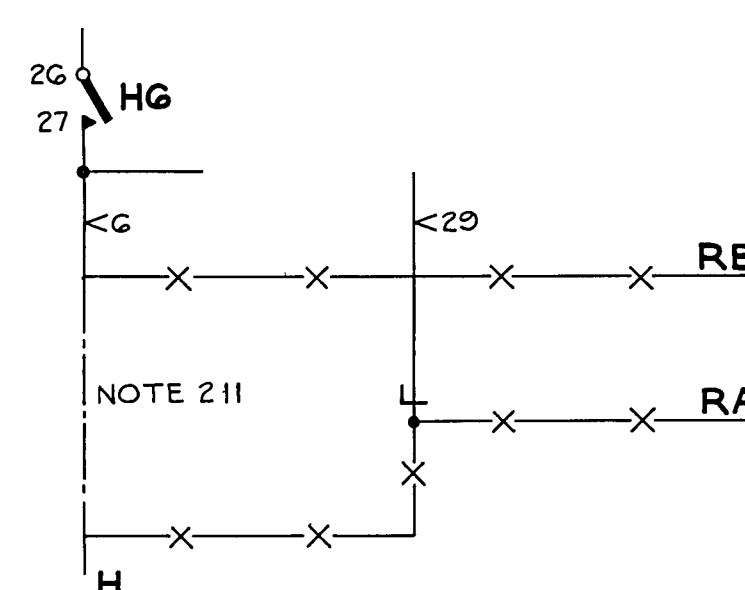
GBW 14150



- NOTE**
- 2.1 LOWER JACK ADDED TO OBTAIN U-POINTS.
 - 2.2 REFER TO INSTALLATION DATA FOR MODIFICATION DETAILS.
 - 2.3 WHEN PARENT EXCH IS OTHER THAN NEC XBAR, HAVING SINGLE DIGIT ACCESS TO A CHARGEABLE ROUTE, PROVIDE CONNECTIONS -X-X- SHOWN IN FIG 2D ONLY

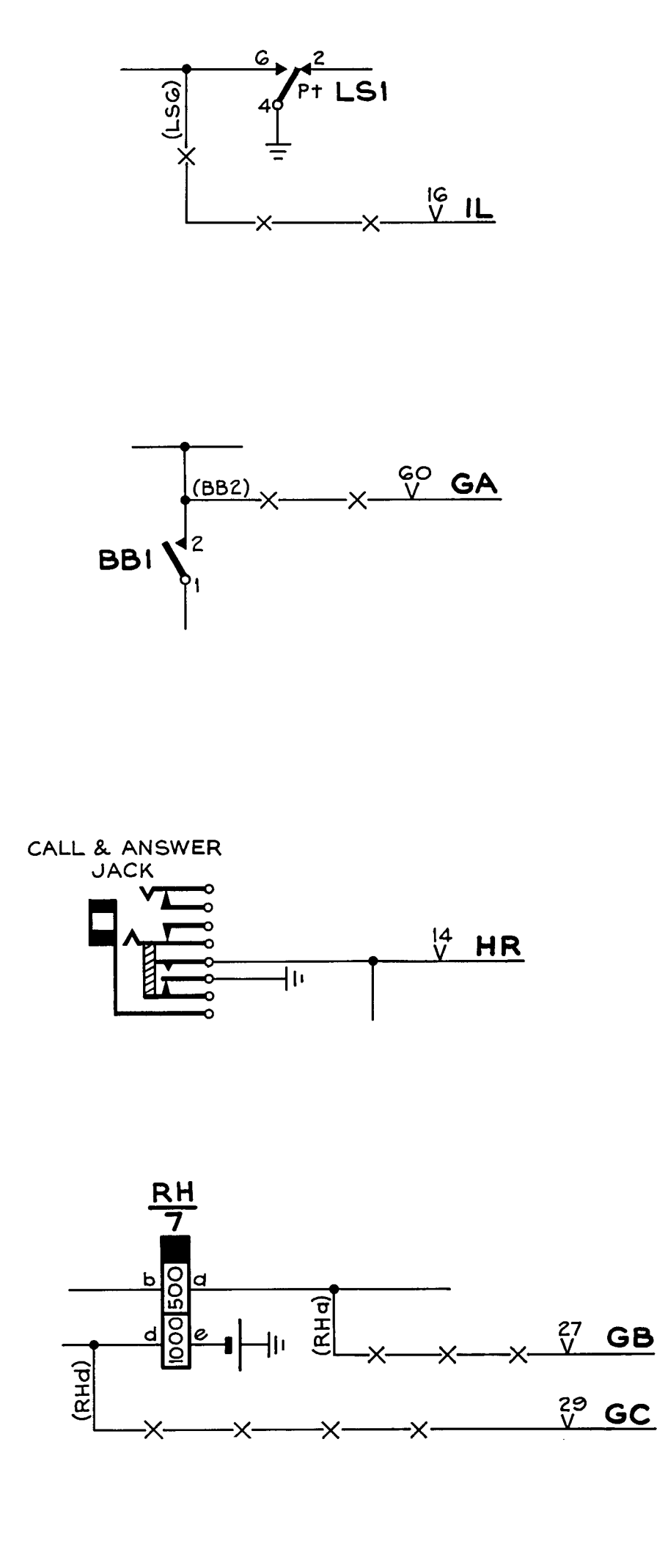
FIG. 2D
(NOTE 2.3)

FIG. 2DA
(NOTE 2.11)



- NOTE**
- 2.11 WHEN PARENT EXCH IS NEC XBAR HAVING SINGLE DIGIT ACCESS TO A CHARGEABLE ROUTE, PROVIDE CONNECTIONS -X-X- IN FIGS 2D & 2DA EXCEPT GC WIRE, & DELETE CONNECTIONS - - - - -

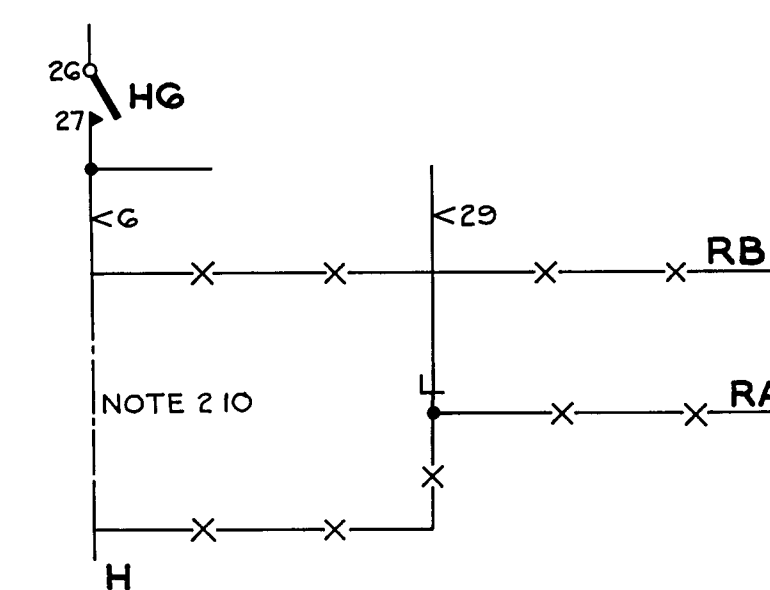
GBW 16990



- NOTE**
- 2.9 WHEN PARENT EXCH. IS OTHER THAN NEC XBAR, HAVING SINGLE DIGIT ACCESS TO A CHARGEABLE ROUTE, PROVIDE CONNECTIONS -X-X- SHOWN IN FIG 2E ONLY

FIG. 2E
(NOTE 2.9)

FIG. 2EA
(NOTE 2.10)



- NOTE**
- 2.10 WHEN PARENT EXCH IS NEC XBAR HAVING SINGLE DIGIT ACCESS TO A CHARGEABLE ROUTE, PROVIDE CONNECTIONS -X-X- IN FIGS 2E & 2EA EXCEPT GC WIRE, & DELETE CONNECTIONS - - - - -

MODIFICATIONS TO ASSOCIATED EXCHANGE LINE RELAY SETS

ROUTE BARRING CIRCUIT FOR 100 & 300 TYPE PABX'S

DATE	ISS	CHANGE	NZPO
12/3/74	A	RETRACED FROM 155 B, OF 28 T 74, CONNS FOR NEC XBAR PARENT ADDED.	ENGINEER-IN-CHIEF WELLINGTON
27/7/75	C	NOTES REFERRING TO NEC X BAR EXCH AMP	COYNS
5/9/77	D		ORIGIN: T-EQPT
			SHT 2 DRAWN: T-EQPT TRACED: J.V.
			AI 39020

RELAY CODES AND COMPONENTS LIST

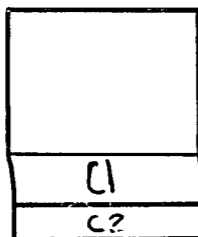
RELAY NAME	BCC CODE	NZPO CODE	BPO CODE	COY CODE	NOTES	STOCK LIST NO	COMPONENT DESIGNATION	BPO CODE	COY CODE	NOTES	STOCK LIST NO	MISC COMPONENTS	NOTES	STOCK LIST NO
A	HSD 701	HSD NZ 810	3/411A		B	LD66	C1	101		14F	KC250	MTG PLATE	RS2/3000/12	LH681
B	B4908					L93	C2	101		14F	KC 250	PLUG	BPO 3201	LH679
CD		54216 AD			31	L172D	DI-D8		IN 4003 OR EQUIV	DIODE	K 905	SCA-SCB	1/DST/844	LH814
SWA		50551 Pd				L278	DS	4		MINIATURE UNISELECTOR	LG 300	INSULATING PLATE	1/SPL/196	LE 811
SWB		50551 Pd				L278	JACK	89A			LG 323	SCREWS	4BA x 3/8 M	LH 610
TBA	HSD 701	HSD NZ 810	3/411A		B	LD66								
TBB	HSD 701	HSD NZ 810	3/411A		B	LD66								
HR	B 70041					L188F								
G	B 1812					L187C	RI			METAL OXIDE RESISTOR 4700- Ω \pm 1% $\frac{1}{2}$ W	ER 855J			
TBC	HSD 701	HSD NZ 810	3/411A			LD66								
RS		50223AA				L77D								
NOTES														
A - SPECIAL FACTORS OF SAFETY B - SPECIAL ADJUST C - CCT POINTS OR MODS														

LAYOUT

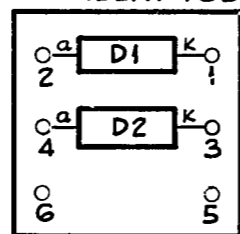
A	HR
B (DS)	RS
CD	TBC (DG)
SWA	TBB
SWB	TBA
DS	U

VIEWED FROM FRONT

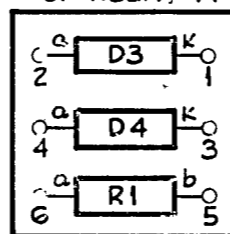
CAPACITOR BOX



SCA
MTD REAR OF RELAY TBB



SCB
MTD REAR OF RELAY A

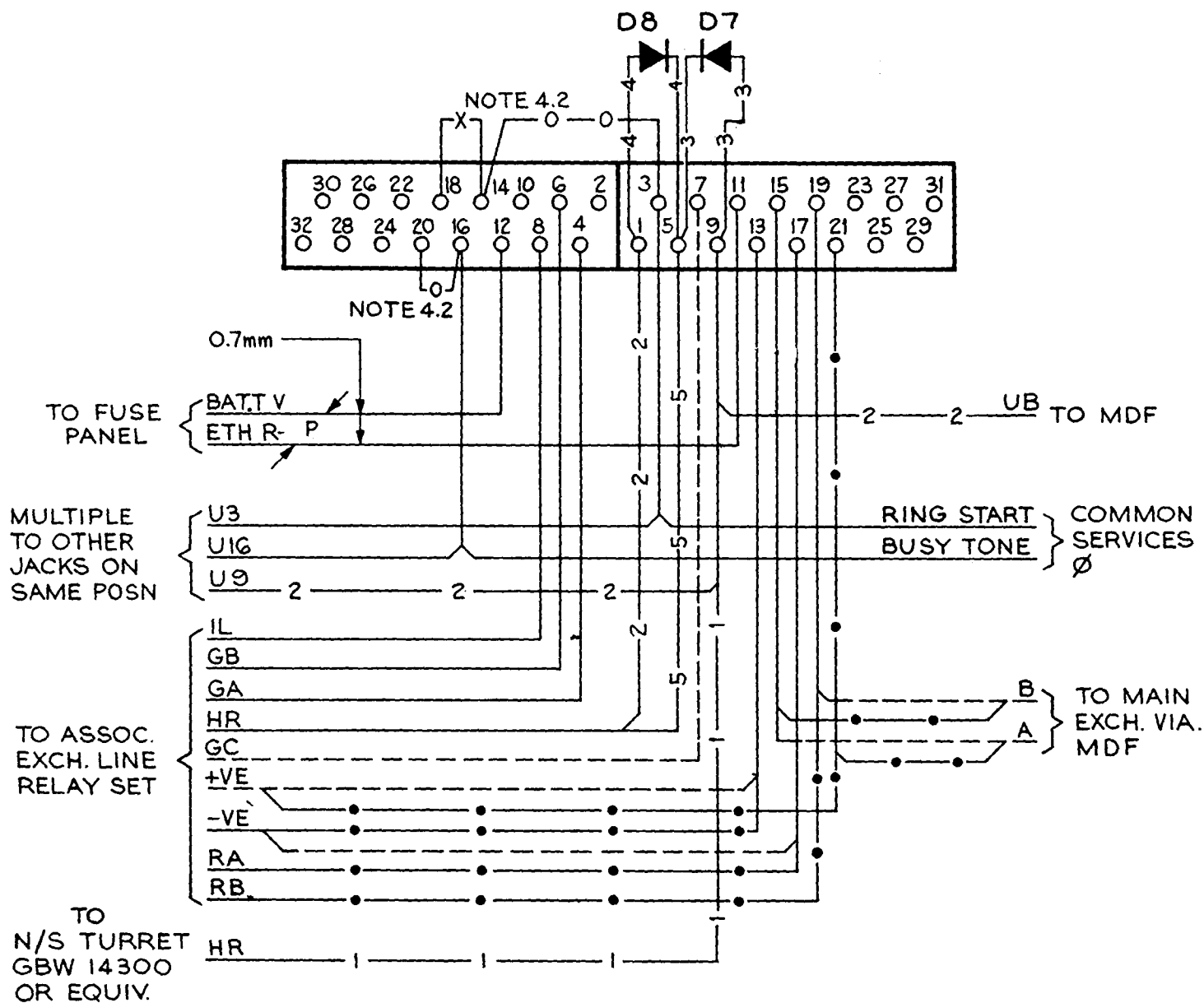


NOTE ~

31 WHEN EVER RELAYS TO NZPO 54216 AD ARE ADJUSTED, CARE MUST BE TAKEN TO ENSURE THAT THE RELEASE LAG IS WITHIN SPECIFIED LIMITS

ROUTE BARRING CIRCUIT
FOR 100 & 300 TYPE PABX'S

DEL	CKD	APD	ORDER	DATE	ISS	CHANGE	N Z P O ENGINEER-IN-CHIEF WELLINGTON		
							COY No: ORIGIN. T-EQP		
							SHT3 DRAWN T-EQPT TRACED		
							A3 39020		



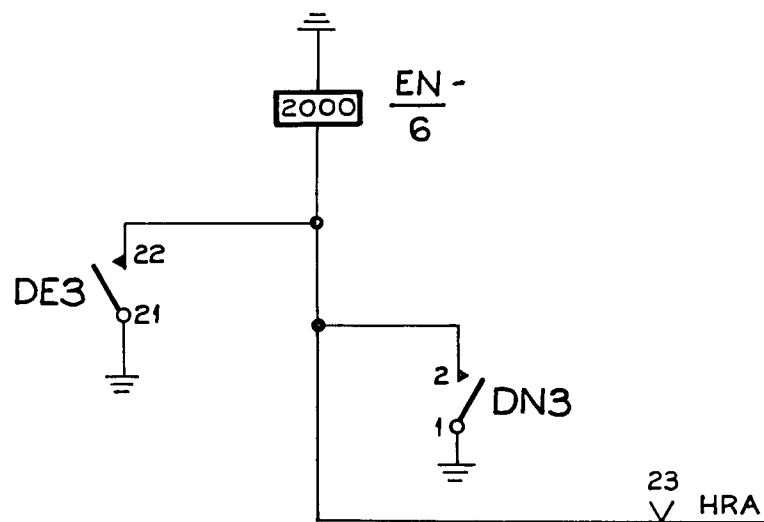
NOTES.

- 4.1 UPTS 13-15, 17-19 MAKE WHEN R/S REMOVED.
- 4.2 STRAP —0—0— IF BUSY TONE RETURNED TO BARRED CALLER. STRAP —x—x— IF THE PABX OPERATOR IS CALLED BY THE BARRED CALLER (PERMANENTLY MANNED SWITCHBOARDS ONLY). WHEN PARENT EXCH IS NEC X BAR HAVING SINGLE DIGIT ACCESS TO A CHARGEABLE ROUTE, DON'T PROVIDE EITHER STRAPPING.
- 4.3 ALL WIRING TO BE 0.5 mm UNLESS OTHERWISE SPECIFIED.
- 4.4 Ø FOR WIRING SEE GBW14380 OR EQUIV. (300 TYPE) GBW13300 MOD A OR EQUIV. (100 TYPE)
- 4.5 WHEN ROUTE BAR OVERRIDE IS REQUIRED ON NIGHT SERVICE TURRET GBW14300 OR EQUIV. USE CONNECTIONS —1—1—, —3—3— AND —5—5—
- 4.6 WHEN ROUTE BAR OVERRIDE IS REQUIRED ON 100 TYPE PABX N/S EXTENSION USE CONNECTIONS —2—2—, —3—3—, —4—4— AND REMOVE CONNECTION —5—5—.
- 4.7 FOR NEC XBAR PARENT EXCH HAVING SINGLE DIGIT ACCESS TO A CHARGEABLE ROUTE PROVIDE CONNECTIONS —●—●— AND DELETE - - - - -

DATE	ISS	CHANGE	NZPO ENGINEER-IN-CHIEF WELLINGTON
29.1.74	B		<h1>ROUTE BARRING CIRCUIT FOR 100 & 300 TYPE PABX'S</h1>
27.7.76	D	RETRACED FROM ISS B, 29.1.74; CONNS. AMD FOR NEC XBAR PARENT.	
6.9.77	E	NOTES 4.2 & 4.7 AMD	
		COY No	SHT 4
		ORIGIN: T-EQPT.	A4
		DWN: T-EQPT TCD: APS	39020

FIG. 5B

PART OF NIGHT SERVICE EXTENSION 89



PART OF GBW I4300
OR EQUIV.
FOR EXPLANATORY PURPOSES
ONLY

MISC STRIP
CONNECTION

UB

D7

NOTE 51

D8

NOTE 51

HR

TO FIGS 2A OR 2B

FIG. 5A

MISC. STRIP CONNECTION

HRA

TO FIGS 2C, 2D OR 2E

FIG. 5C

MODIFICATION FOR ROUTE BAR OVER-RIDE -
100 TYPE PABX'S

PART OF FIG. 1
FOR EXPLANATORY PURPOSES ONLY.
MODIFICATION FOR ROUTE BAR OVER-RIDE :-
300 TYPE NIGHT SERVICE TURRET

NOTES.

- 51 DIODES MOUNTED ON U POINTS
- 52 KEY OR PUSH BUTTON ON OR ALONG
SIDE EXTENSION 89

ROUTE BARRING CIRCUIT FOR
100 & 300 TYPE PABX'S

DATE	ISS	CHANGE	NZPO ENGINEER-IN CHIEF, WELLINGTON	
10 3 75	A		COY N ^o	ORIGIN T-EQPT
			SHT. 5	DRAWN T-EQPT TRACED WBL
				39020