



FIG. 1

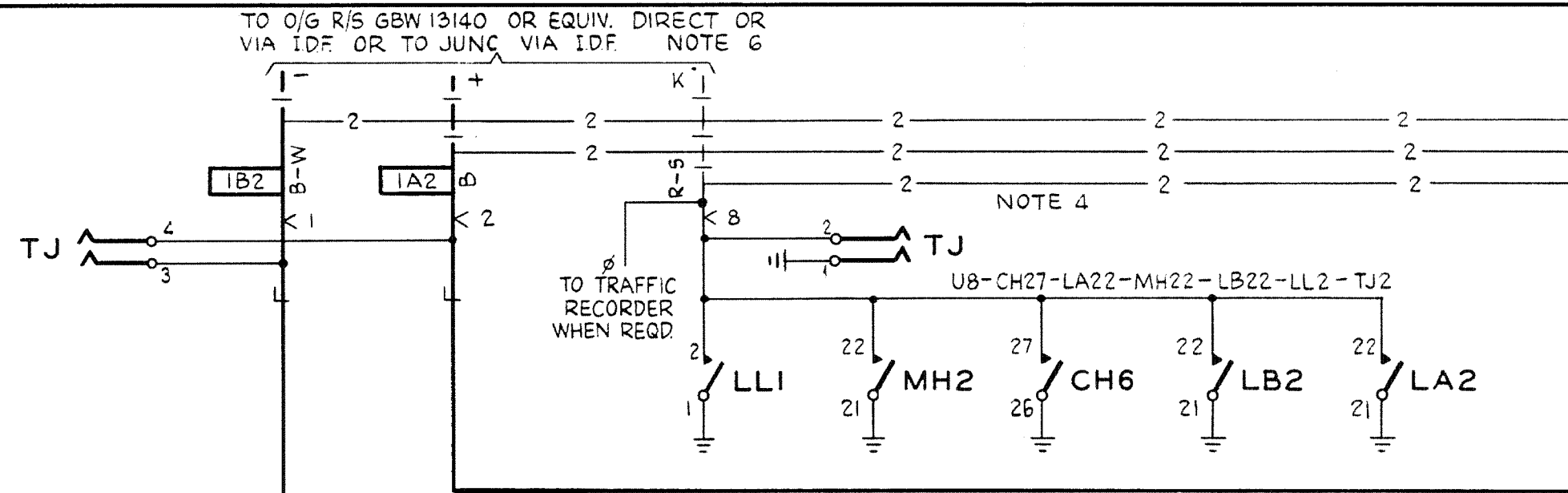


FIG. 3 I.D.F. LOC. OR MULT

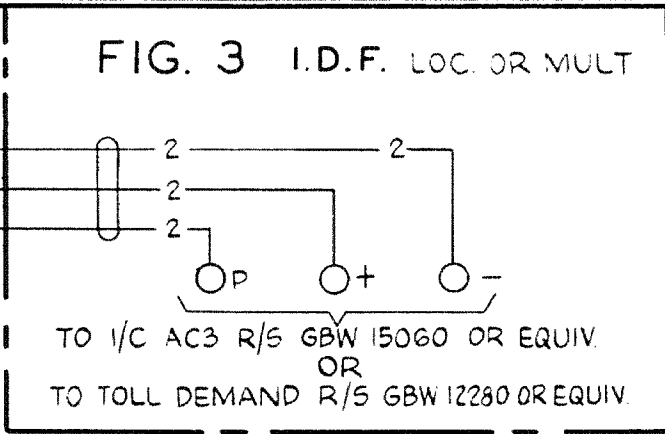
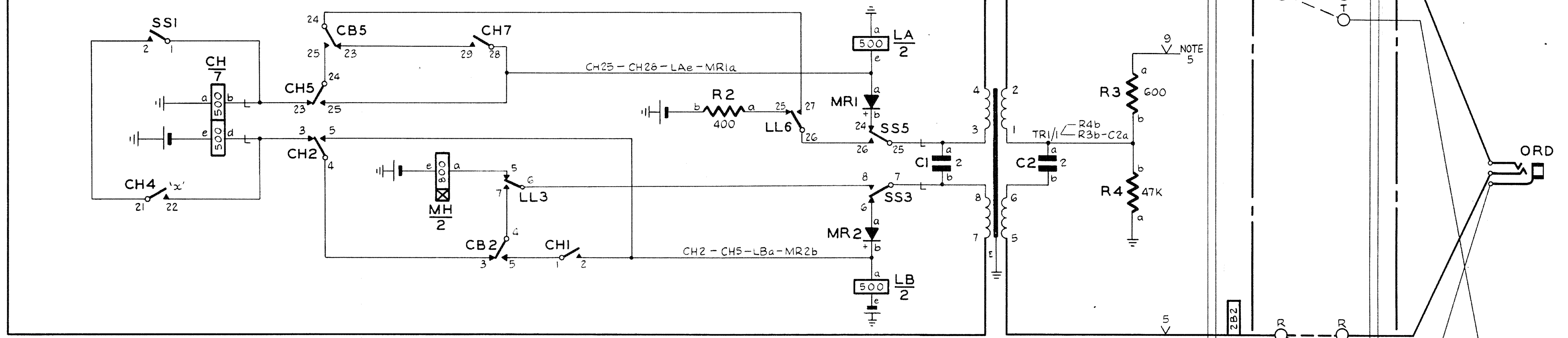


FIG. 2 I.D.F.

MANUAL BOARD  
(EXPLANATORY ONLY)



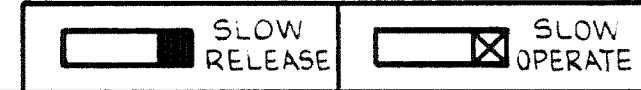
- NOTES
1. FUSING 1.5A PER RELAY SET.
  2. ALL WIRING TO BE 25 SWG UNLESS OTHERWISE SPECIFIED.
  3. Ø FOR WIRING SEE GBW.10640 OR EQUIVALENT
  4. WHEN FIG 3 REQUIRED ADD WIRING -2- AND OMIT WIRING SHOWN-1-
  5. STRAP SHELF JACK POINTS U9 & U11 WHEN CCT IS ASSOCIATED WITH AN UNDER 3 DB UNREPEATERED LINE.
  6. FOR BOTHWAY WORKING CONNECT TO GBW 13140 OR EQUIVALENT. FOR UNIDIRECTIONAL WORKING K LEAD IS NOT CONNECTED, - & + LEADS ARE CONNECTED TO JUNCTION

BATT. BK 22 SWG FUSE 3B2

ETH. R 22 SWG ETH BAR 3A2

BATT. W :- U12-CHe-MHe-CBe-LBe-LLe-Rib-R2b

ETH. R :- U11-TRI/E-CH2G-CHa-LA21-LAa-Sd-SSa  
MH21-MH1-CB21-LB21-LB2-LL21-LL1-TJ1

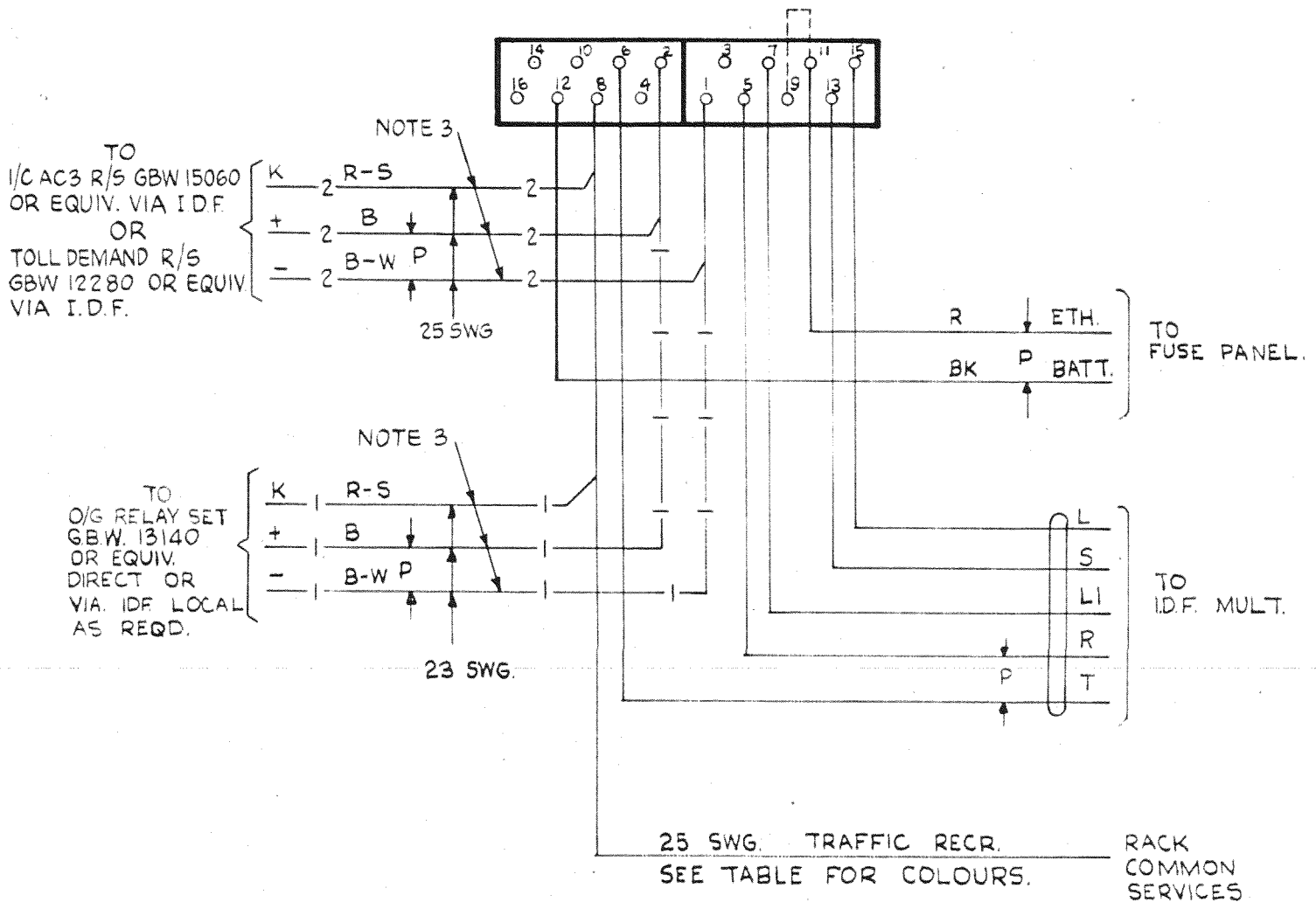


ISS	DATE	CHKD	APPD	DEL	ORDER	CHANGE	NEW ZEALAND POST OFFICE, ENGINEER-IN-CHIEF, WELLINGTON	
A	23/5/67			JAG	53/22		JUNCTION RELAY SET 1/C TOLL DEMAND FROM A.M.X. OR U.A.X. SLEEVE CONTROL SYSTEM	
REFERENCE	GBW. 12250	SIZE	SHEET	34022		A		
ORIGIN	TEL. EQPT. SECT	M	I					
DRAWN	TEL. EQPT.	TRACED	JAG					

# FIG. IA. DC SIGNALLING. BOTHWAY WORKING.

AS SEEN FROM REAR

NOTE 2.



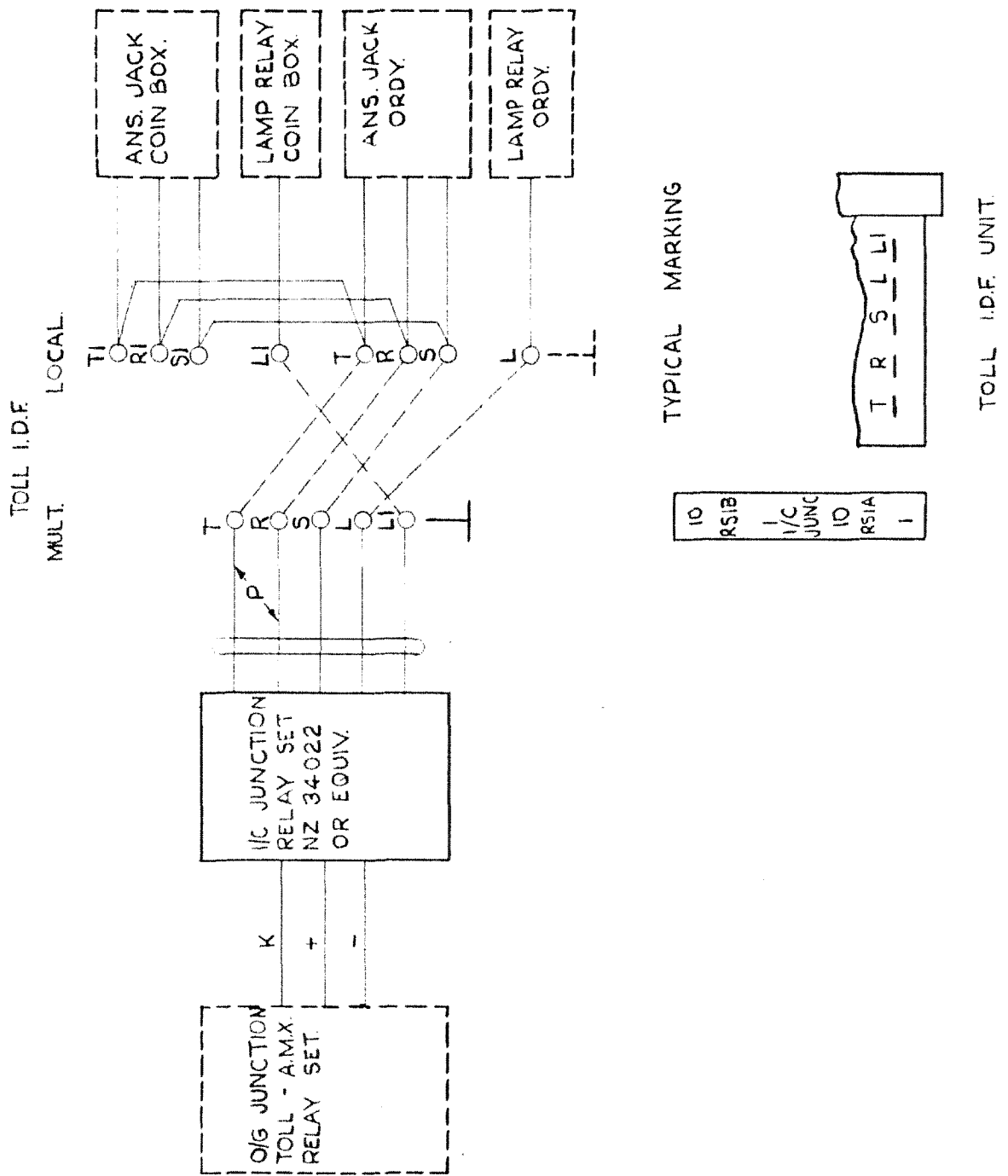
## NOTES

1. ALL WIRING 20 SWG. UNLESS OTHERWISE SPECIFIED
2. STRAP UPTS. 9 & 11 WHEN CCT IS ASSOCIATED WITH AN UNDER 3DB UNREPEATERED LINE.
3. WHEN CCT IS USED IN CONJUNCTION WITH TOLL DEMAND R/S ADD WIRING SHOWN - 2- AND DELETE WIRING SHOWN - 1-
4. FOR B/W WORKING CONNECT TO O/G JUNC. RELAY SEL. DIRECT OR VIA I.D.F. LOCAL. FOR UNIDIRECTIONAL WORKING K LEAD IS NOT REQUIRED; - & + LEADS ARE CABLED TO IDF LOCAL.

COLOURS FOR TRAFFIC REC. LEAD.	
SHELF PAIR No.	COLOUR
1	R-O
2	R-G
3	R-BN
4	R-S
5	R-B-W

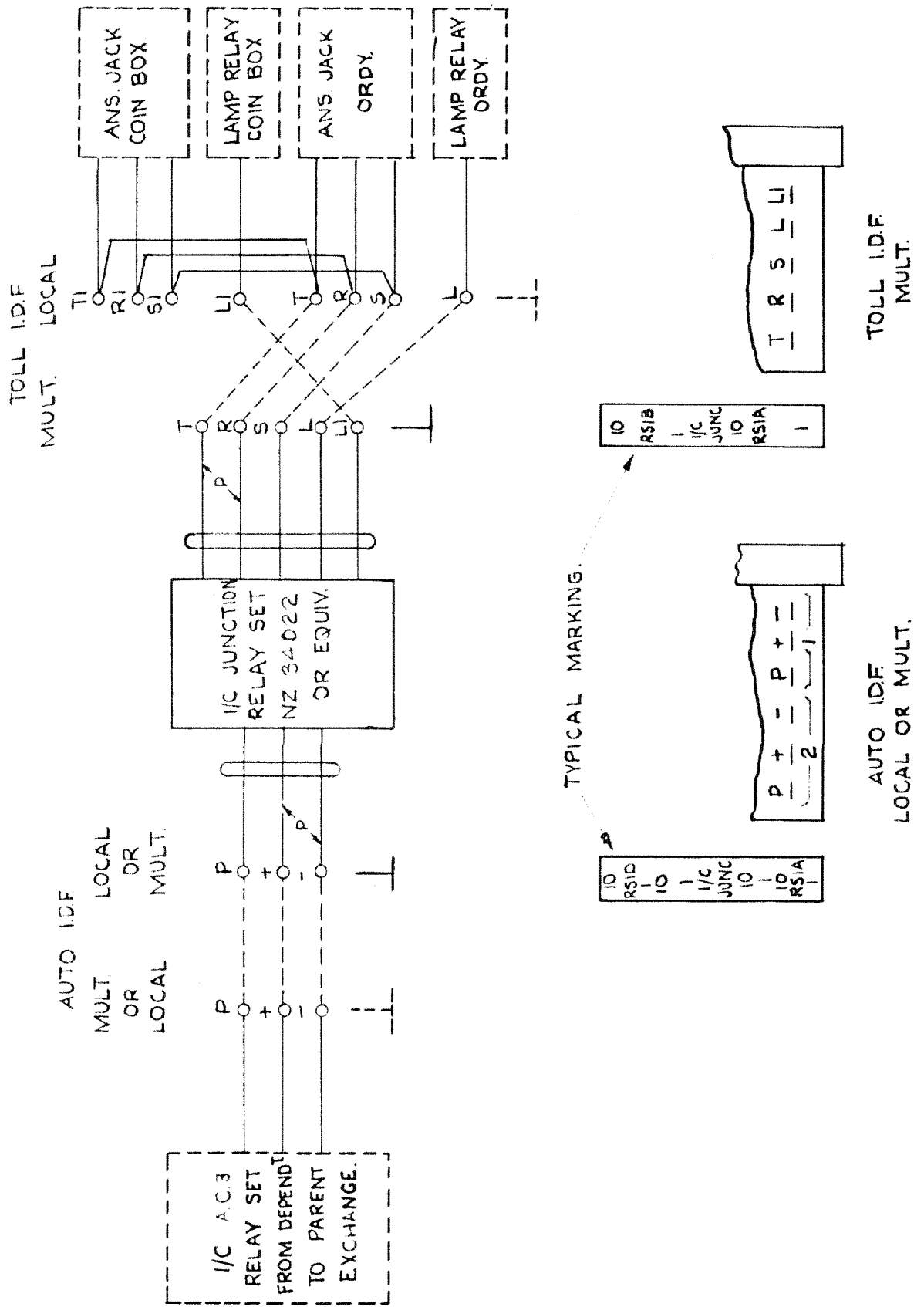
ISS	DATE	CHKD	APPD	DEL	ORDER	CHANGE	NEW ZEALAND POST OFFICE, ENGINEER-IN-CHIEF, WELLINGTON.
A	5-5-67			YH	53122	PREPARED FROM G.B.W. 12250-55-3	<p>JUNCTION RELAY SET 1/C TOLL DEMAND FROM A.M.X. OR U.A.X. S.C.S. SHELF JACK WIRING FIG. IA. DC SIGNALLING BOTHWAY WORKING.</p>
						ORIG.N	TEL EQUIP. SEC.
						REF.	GBW. 12250.
						DRAWN	CO PRINT
						TRACED	Y.H.
						SIZE	SHEET
						F. 2	34022 A

FIG. A. DC SIGNALLING. BOTHWAY WORKING DIRECTLY CONNECTED.



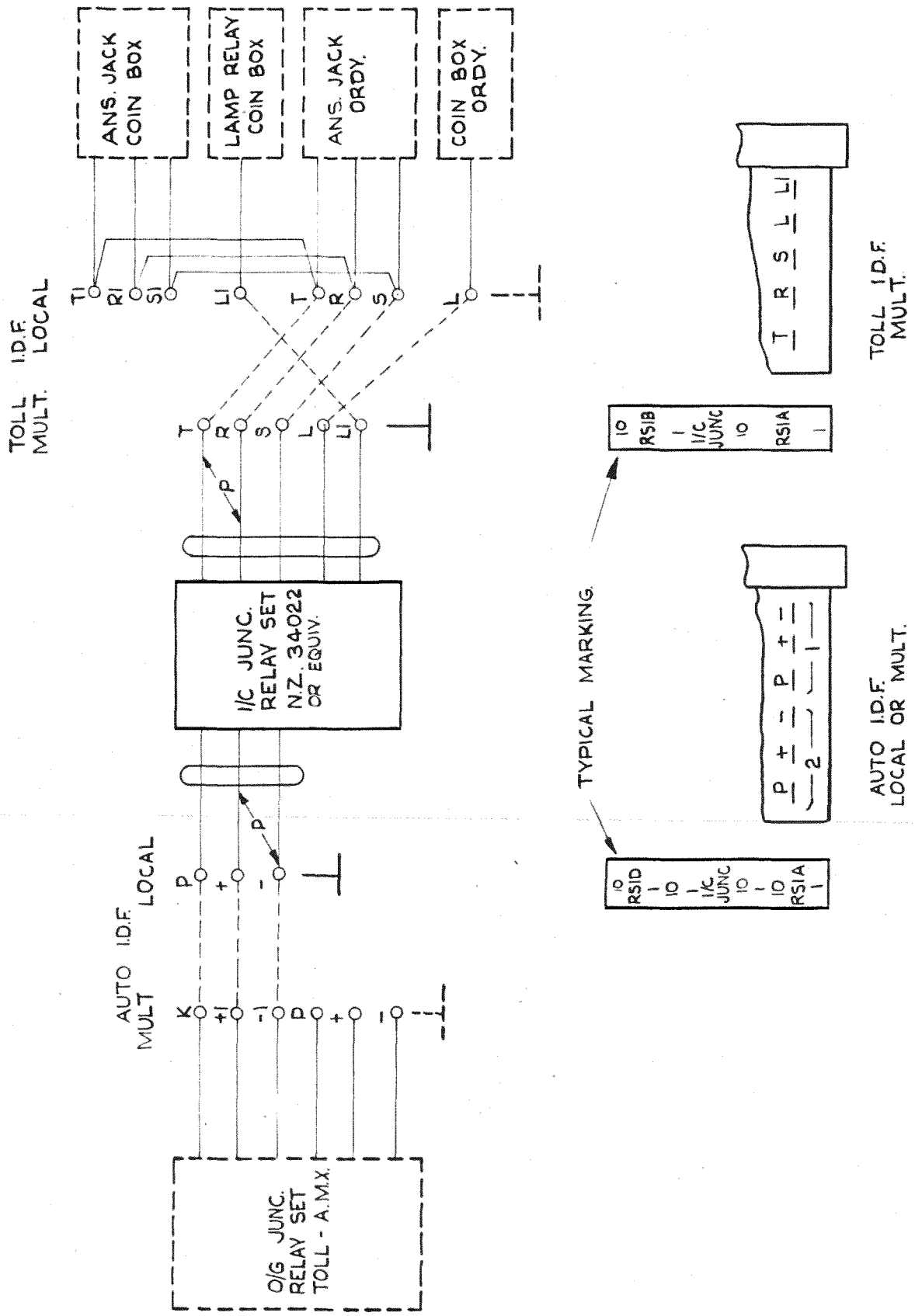
ISS	DATE	CHKD	APPD	DEL	ORDER	CHANGE	NEW ZEALAND POST OFFICE, ENGINEER - IN-CHIEF, WELLINGTON
A	15 5-67			Y.H.	53122	PREPARED FROM G.B.W.12250 155 3	JUNCTION RELAY SET I/C TOLL DEMAND FROM A.M.X OR U.A.X. SCS
							CROSS CONNECTIONS FIG.A DC SIGNALLING. B/W WORKING. DIRECTLY CONNECTED.
						ORIGIN	TEL EQUIP SEC.
						REF.	G.B.W.12250
						DRAWN	CO.PRINT TRACED Y.H.
						SIZE	SHEET
						F. 3	34022
						A	

FIG. B. A.C.3. SIGNALLING VIA I.D.F.



ISS	DATE	CHKD	APPD	DEL	ORDER	CHANGE	NEW ZEALAND POST OFFICE, ENGINEER-IN-CHIEF, WELLINGTON.															
A	15-6-67			J.H.	53122	PREPARED FROM G.B.W. 12250. ISS. 3	<p>JUNCTION RELAY SET I/C TOLL DEMAND FROM A.M.X. OR U.A.X. S.C.S. CROSS CONNECTIONS FIG.B. A.C.3. SIGNALLING VIA. I.D.F.</p>															
<table border="1"> <tr> <td>ORIGIN</td> <td>TEL. EQUIP. SEC.</td> <td>SIZE</td> <td>SHEET</td> <td rowspan="2">34022</td> <td rowspan="2">A</td> </tr> <tr> <td>REF</td> <td>GBW. 12250</td> <td>F</td> <td>4</td> </tr> <tr> <td>DRAWN</td> <td>CO PRINT</td> <td>TRACED</td> <td>J.H.</td> <td></td> <td></td> </tr> </table>								ORIGIN	TEL. EQUIP. SEC.	SIZE	SHEET	34022	A	REF	GBW. 12250	F	4	DRAWN	CO PRINT	TRACED	J.H.	
ORIGIN	TEL. EQUIP. SEC.	SIZE	SHEET	34022	A																	
REF	GBW. 12250	F	4																			
DRAWN	CO PRINT	TRACED	J.H.																			

FIG. C. D.C. SIGNALLING. BOTHWAY WORKING VIA I.D.F.



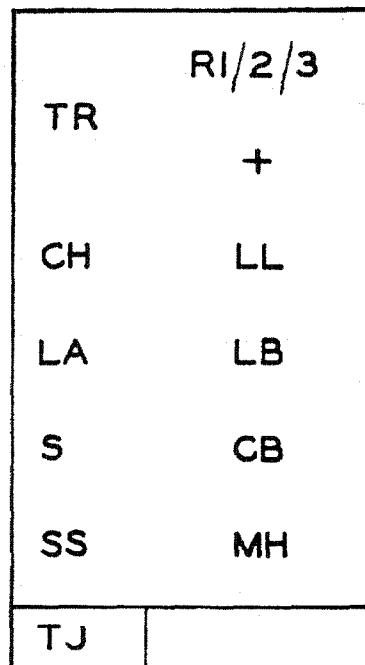
195	DATE	CHKD	APPD	DEL	ORDER	CHANGE
A	15.5.67			Y.H	53122	PREPARED FROM G.B.W. 12250. 155. 3

NEW ZEALAND POST OFFICE, ENGINEER-IN-CHIEF, WELLINGTON					
JUNCTION RELAY SET I/C TOLL DEMAND FROM A.M.X. OR U.A.X. S.C.S.					
CROSS CONNECTIONS. FIG.C. D.C. SIGNALLING. B/W. WORKING. VIA. I.D.F.					
ORIGIN	TEL. EQUIP. SEC.	SIZE	SHEET	34022	A
REF.	G.B.W. 12250	F	5		
DRAWN	CO. PRINT.	TRACED	Y. H.		

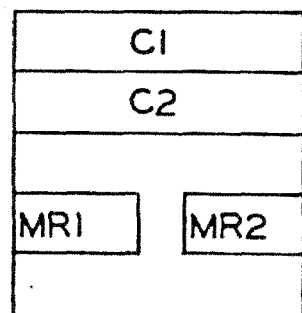
# RELAY CODES AND COMPONENTS LIST

RELAY NAME	B.C.C. CODE	N.Z.P.O. CODE	B.P.O. CODE	COMPANY CODE	NOTES	COMPONENT DESIGNATION	B.P.O. CODE	COMPANY CODE	NOTES	MISCELLANEOUS COMPONENT	NOTES
CB	2308					R1	9		150Ω	RESIS. MTG. POST.	1 x 3.75"
CH	2404					R2	9		400Ω		
LA	1053					R3	9		600Ω	MTG. PLATE	BPO RS2/3000/12
LB	1053					R4			47KΩ 5% 1/4 WATT HIGH STABILITY WIRED ACROSS TRI.		WITH CAP BOX.
LL	2498										
MH	72258					MR1	1/12				
S	6198					MR2	1/12				
SS	6076										
						DI	HS1009		WIRED ACROSS LA & CH RELAYS.		
						TJ	21H				
NOTES:- A-SPECIAL FACTORS OF SAFETY B-SPECIAL ADJUSTMENTS C-CIRCUIT POINTS OR MODIFICATIONS											

LAYOUT FRONT VIEW.



CAPACITOR BOX REAR VIEW



JUNCTION RELAY SET I/C TOLL DEMAND FROM  
A.M.X. OR U.A.X. SLEEVE CONTROL SYSTEM.

ISS	DATE	CHKD.	APPD.	DEL	OR	CHANGE
A	15-3-67					PREPARED FROM G.B.W. 12250 ISS. 3.

NEW ZEALAND POST OFFICE,  
ENGINEER-IN-CHIEF, WELLINGTON.

COY. No	ORIGIN	TEL EQUIP SECT.	REFERENCE	G.B.W. 12250	DRAWN	CO. PRINT	TRACED	S.H.	SIZE	SHEET	34022	A
									S	6		