

FIG. 1 : LOOKING DOWN FROM TOP OF 'A' UNIT

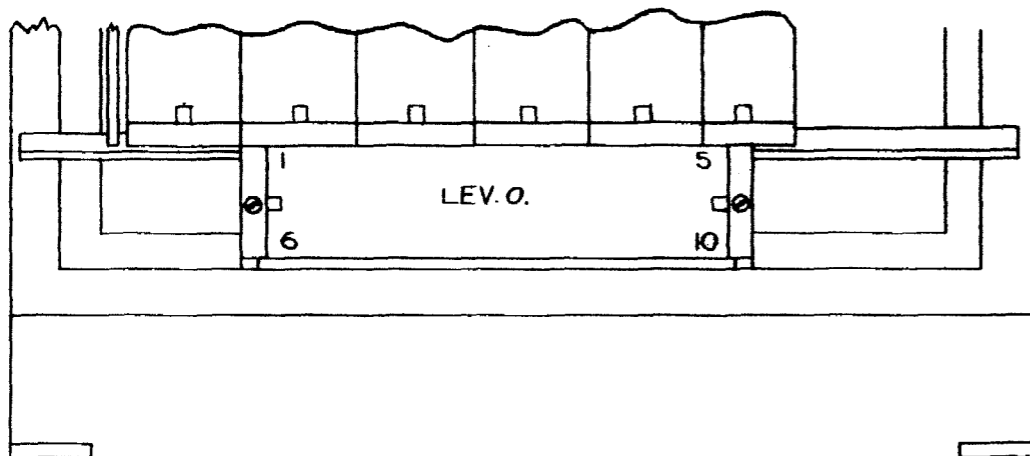


FIG. 2: LOOKING IN FROM FRONT OF 'A' UNIT.

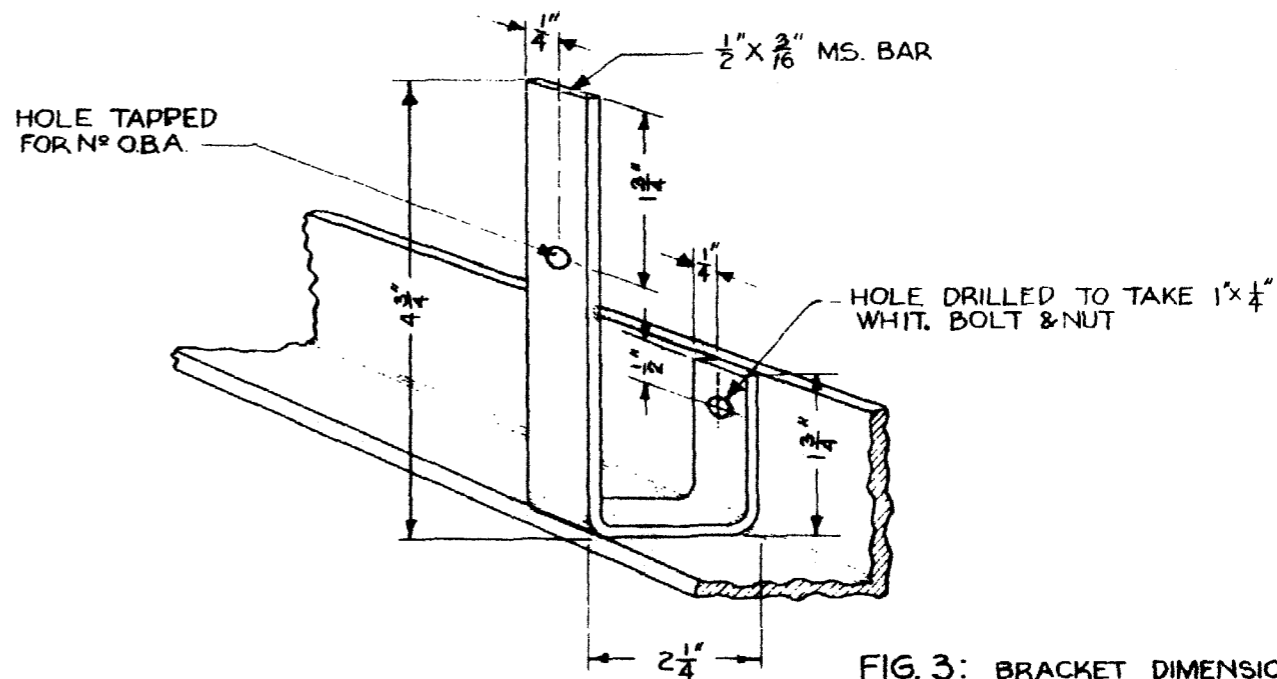


FIG. 3: BRACKET DIMENSIONS.

NOTES.

- 1: THE BRACKETS ARE TO BE MANUFACTURED LOCALLY AND THE FINISH IS TO BE STANDARD "A" (LIGHT GREY)
- 2: A SUITABLE STIFFENING ROD CAN BE MADE UP LOCALLY FROM L.H. 796. IT WILL BE NECESSARY TO BEND IT AS SHOWN IN FIG. 1 & TO ALSO ENLARGE THE HOLES IN THE FIXING LUGS

METHOD OF INSTALLING
ADDITIONAL LINE CIRCUITS 51-60
IN A UAX NZ 13 "A" UNIT.

REV.	DATE	BY	APPD.	CHKD.	ORDER	CHANGE
A	15-10-66	J. D. A.	AJB	681	53115	

NEW ZEALAND POST OFFICE
ENGINEER-IN-CHIEF, WELLINGTON

ORIGIN	TELE. EQPT. SEC.	NOTE	SHEET	34013 A
		F.	1	
DRAWN	TELE. EQPT. TRACED	BY	2	

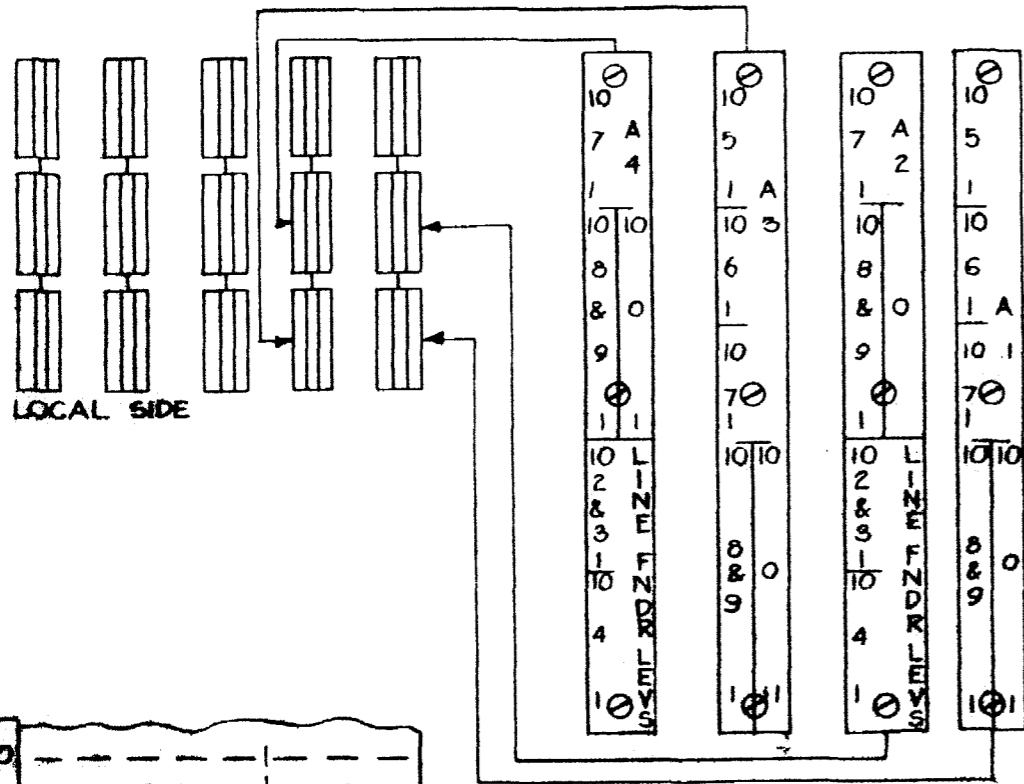


FIG. 4: TERMINATION OF LEVEL
LINE R/S'S ON "C" UNIT I.D.F.

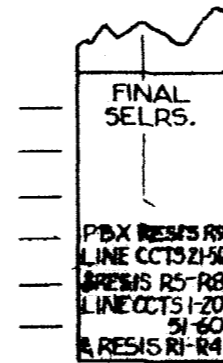
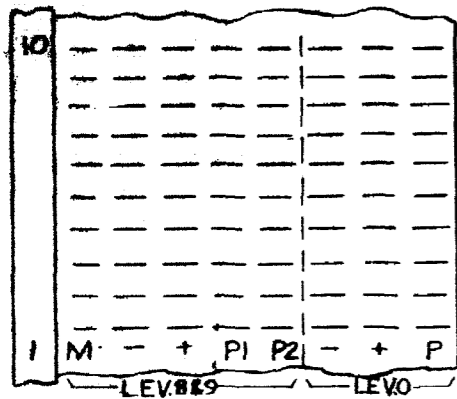


FIG. 5: FUSE MTG.

METHOD OF INSTALLING
ADDITIONAL LINE CIRCUITS 51-60
IN A UAX NZ 13 "A" UNIT.

NO.	DATE	BY	CHKD.	REMARKS	CHANGE
A 13-026	J.D.R.	288	R4	55175	

NEW ZEALAND POST OFFICE ENGINEER-IN-CHIEF, WELLINGTON					
ORIGIN	TEL. EQPT. SECT	SIZE	SHEET	34013 A	
		F	2		
			OF		
			2		
DRAWN: TEL. EQPT. SECT			R4		