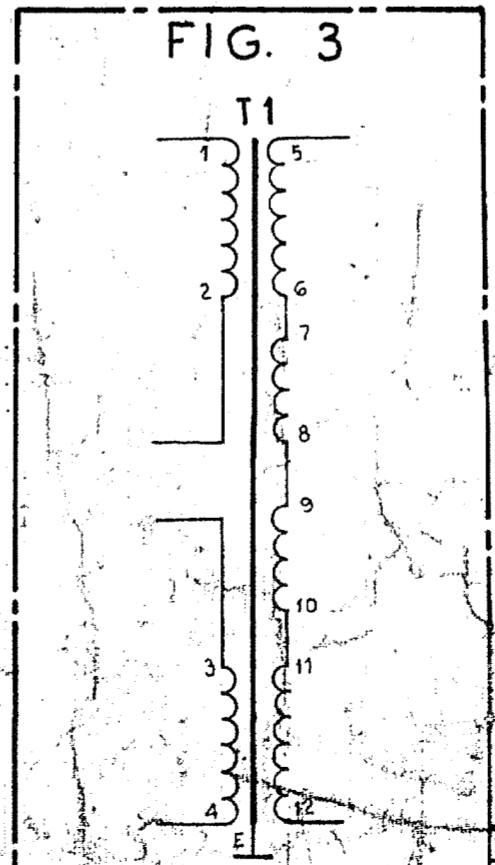


RX1b  
 BATT. W. U12 - Bc - DRa - CDc - A2 - R3b - R4b  
 ETH. R. U11 - T1/E - RRf - B24 - DRb - LS2 - A22 - R2a  
 BATT. BK. 0.7mm FUSE 3B2 U12  
 ETH. R. 0.7mm ETH. BAR 3A2 U11

**NOTES:**

- 1-1 1.5 A FUSING PER CIRCUIT.
- 1-2 ALL WIRING UNLESS OTHERWISE STATED TO BE 0.5mm.
- 1-3 FOR WIRING REFER RELEVANT COMMON SERVICE DIAGRAM.
- 1-4 CONNECT RING START/MACHINE START WHEN REQUIRED.
- 1-5 TERMINALS SC ARE AT REAR OF RELAY SET.
- 1-6 RELAY DR IS DIFFERENTIALLY CONNECTED.
- 1-7 WHEN +1, -1 LEADS WIRED THROUGH REGISTER PROVIDE PL1 LEAD 1-1-1 AND DELETE 2-2-2. WHEN +2, -2 LEADS WIRED THROUGH REGISTER PROVIDE PL2 LEAD 2-2-2 AND DELETE 1-1-1.
- 1-8 REGISTER STRAPPED FOR 50V WORKING.
- 1-9 CONNECT U16 - U14 & U10 - U8 FOR RING RTN EARTH. CONNECT U14 - U10 & U16 - U8 FOR RING RTN BATT.
- 1-10 TO BE PROVIDED AS REQUIRED.
- 1-11 PROVIDE DIODE D4 TO MINIMISE PULSE DISTORTION IN ALL NEW EQUIPMENT AND WHEN REQUIRED IN EXISTING RELAY SETS.
- 1-12 BRACKETED NUMERALS SHOW CONNS. FOR P97129 XFMR.
- 1-13 WHEN MATCHING REQUIRED FOR LOADED CABLE, USE 600/1200 Ω XT. TRP 244, THE 1200 Ω SIDE TERMINATING THE LOADED CABLE.



JUNCTION LIMITS  
 ENTRY 1000 OHMS (SIGNALLING)  
 EXIT 1000 OHMS (SIGNALLING)

**LONG LINE REPEATER N.Z.P.O. P.A.B.X.  
 DISTANT EXTENSION SERVICE**

| DEL. | CRO. | APP.  | ORDER    | DATE | ISS. | CHANGE                                                        |
|------|------|-------|----------|------|------|---------------------------------------------------------------|
| BA   | RD   | 66505 | 27-6-66  | A    |      |                                                               |
| G.U. | B.W. | 38261 | 3-5-63   | B    |      | FIG. 3 ADDED & NOTES 1-12 & 1-13                              |
| PM   | CR   | 59107 | 7-12-71  | C    |      | WIRING OF RELAY CHANGED. NOTES 1-9 & 1-10 ADDED. 1-4 AMENDED. |
| WM   | SR   | 59752 | 10-8-73  | D    |      | D-1 ADDED. NOTE 1-10 CHANGED. BATT. RUN AMD.                  |
| SA   | JR   | 69120 | 10-10-75 | E    |      | 1-15 ADDED.                                                   |
| N.S. | DR   | 13306 | 12-5-81  | F    |      | 1-12 & NOTE 1-11 ADDED.                                       |

TRP 244 TRANSFORMER CONNS. (600/600 Ω OR 600/1200 Ω) (NOTE 1-13)

N.Z.P.O. ENGINEER-IN-CHIEF WELLINGTON

COV. NO. 1013 DRAWN-T.EQPT. TRACED-AP

A2 33004

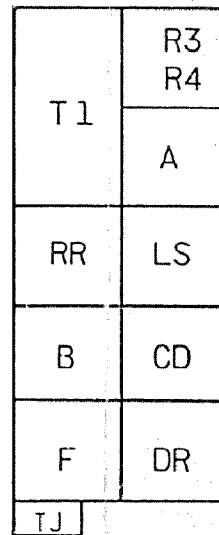
# RELAY CODES AND COMPONENTS LIST

| RELAY NAME                                                                 | B.C.C. CODE | N.Z.P.O. CODE | B.P.O. CODE | COY CODE | NOTES | STOCK LIST NO | COMPONENT DESIGNATION | B.P.O. CODE | COY CODE        | NOTES                           | STOCK LIST NO  | MISC. COMPONENTS | NOTES             | STOCK LIST NO |  |
|----------------------------------------------------------------------------|-------------|---------------|-------------|----------|-------|---------------|-----------------------|-------------|-----------------|---------------------------------|----------------|------------------|-------------------|---------------|--|
| A                                                                          | HSD 716     |               |             |          | B     | LD 90F        | T1                    |             | P97129<br>415 A | 600/600 Ω (EARLY EQPT.)         | K 98DE         | MTG. PLATE       | RS2 3000 10       | LH 680        |  |
| LS                                                                         | HSD 702     |               |             |          | B     | LD 90         | T1                    |             |                 | 600/600 Ω TRP 244<br>600/1200 Ω | CA 11<br>CA 13 | PLUG             | BPO 1603          | LH 678G       |  |
| B                                                                          | 73957       |               |             |          |       |               | C1A                   | 105         |                 |                                 | KC 278         | SCREWS           | 4BA × 3/8 IN. (4) | LH 610        |  |
| CD                                                                         |             | 54148 AD10    |             |          |       |               | C1B<br>C3             | 102 C       |                 |                                 | KC 313         | PLATE            | 1 SPL 196 (2)     | LE 811        |  |
| DR                                                                         | 70595       |               |             |          |       |               | R1&2                  | 6           |                 |                                 | KB 116         | POST             | 2 1/2 IN          | KB 9A         |  |
| RR                                                                         | 7006        |               |             |          | C     |               | R3 & R5               | 9           |                 |                                 | KB 204         | TJ               | JACKS No. 21H     | LC 147B       |  |
| F                                                                          | 5688        |               |             |          |       |               | R4                    | 9           |                 |                                 | KB 259         |                  |                   |               |  |
|                                                                            |             |               |             |          |       |               | D1-4                  |             | 1N 4003         |                                 | K 905          |                  |                   |               |  |
|                                                                            |             |               |             |          |       |               | RX1                   | 2           |                 | ATMITE MTD. AT REAR OF RELAY CD | K 996          |                  |                   |               |  |
|                                                                            |             |               |             |          |       |               | SCA, SCB              | 1 DST 844   |                 |                                 | LH 814         |                  |                   |               |  |
| NOTES                                                                      |             |               |             |          |       |               |                       |             |                 |                                 |                |                  |                   |               |  |
| A - SPECIAL FACTORS OF SAFETY B - SPECIAL ADJUST. C - CCT. POINTS OR MODS. |             |               |             |          |       |               |                       |             |                 |                                 |                |                  |                   |               |  |

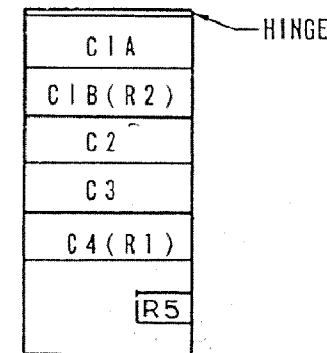
NOTES:

### LAYOUT

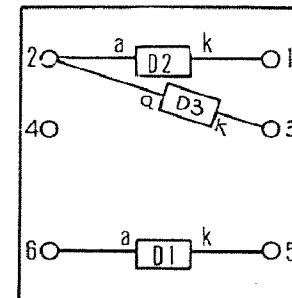
(FRONT VIEW)



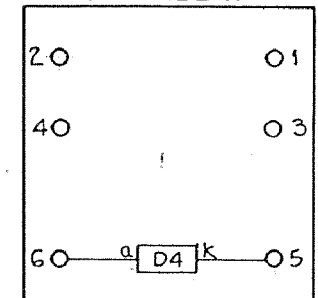
CAPACITOR BOX



SCA MTD. REAR OF RR RELAY



SCB MTD. REAR OF A RELAY



NOTE 1-11

MASTER TRACING 28433

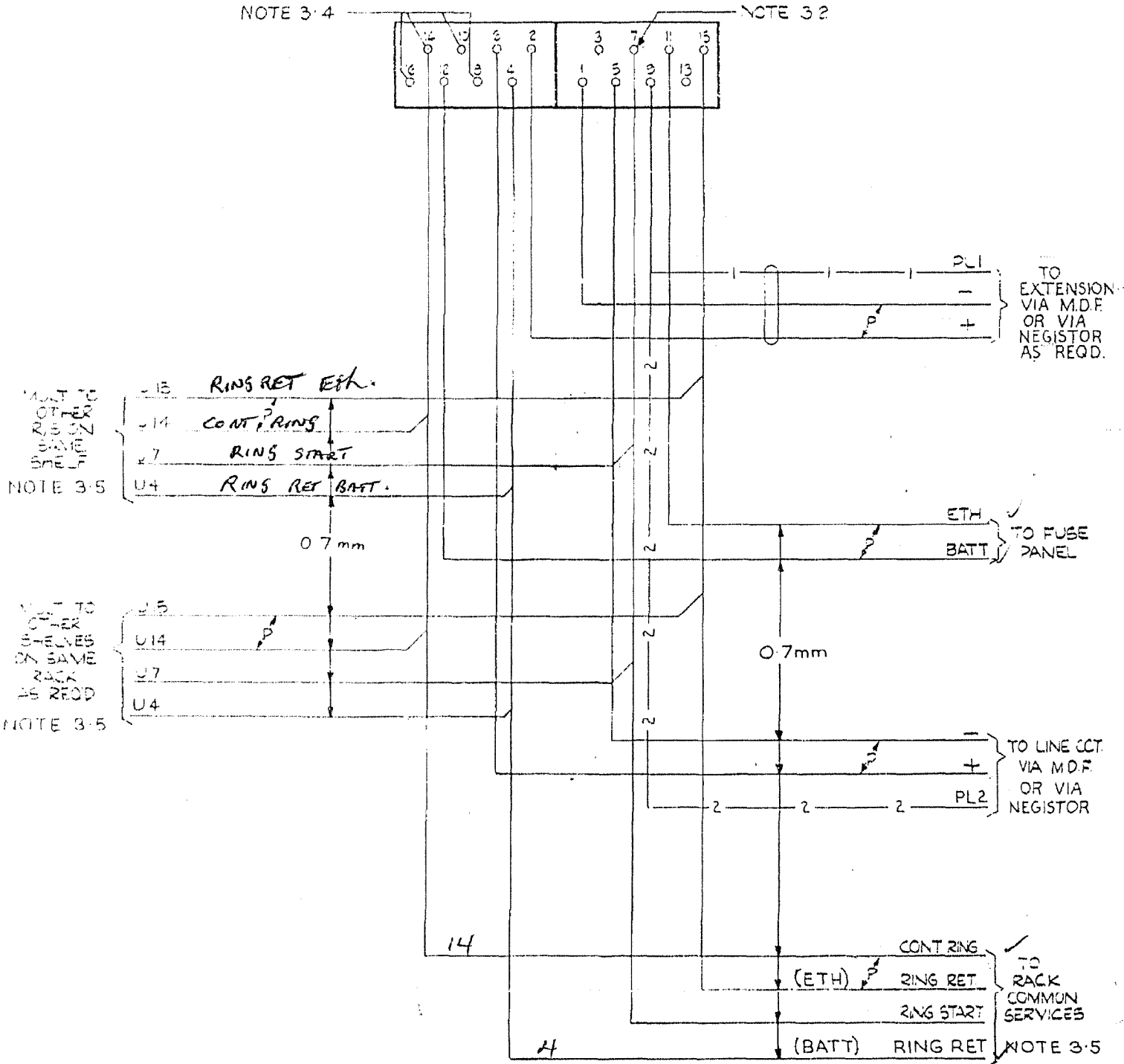
LONG LINE REPEATER  
NZPO PABX  
DISTANT EXTENSION SERVICE

| DEL  | CKD | APD   | ORDER | DATE     | ISS | CHANGE                                      | N Z P O<br>ENGINEER-IN-CHIEF WELLINGTON |                               |
|------|-----|-------|-------|----------|-----|---------------------------------------------|-----------------------------------------|-------------------------------|
| BWR  | JSR | RD    | 68505 | 22-6-68  | A   |                                             |                                         |                               |
| WM   | GRB | G.F.E | 99752 | 10-8-73  | D   | RETRACED FROM ISS.C OF 7-12-71<br>TJ ADDED. | COY. NO.:                               | ORIGIN: T-EQPT.               |
| SAJ  | HBB | JGW   | 68120 | 18-10-75 | E   | R5 ADDED.                                   | 2 OF 3                                  | DRAWN: T-EQPT. TRACED: B.W.S. |
| N.S. | BW  | WJH   | 63808 | 5-5-81   | F   | D4 & SCB SHOWN                              | A3                                      | 33004                         |
| G.U. | BW  | RJS   | 38261 | 3-5-83   | G   | NOTE 2-1 DEL. T1 INFORMATION AMD.           |                                         |                               |

AS SEEN FROM REAR

NOTE 3.4

NOTE 3.2



NOTES:-

- 1. ALL WIRING TO BE 0.5 mm UNLESS OTHERWISE STATED
- 2. CONNECT RING START/MACHINE START WHEN REQUIRED
- 3. WHEN +1,-1, LEADS WIRED VIA NEGISTOR PROVIDE PL1 LEAD 1-1-1 & DELETE 2-2-2. WHEN +2,-2, LEADS WIRED VIA NEGISTOR PROVIDE PL2 LEAD 2-2-2 & DELETE 1-1-1
- 4. CONNECT U14-U16 & U8-U10 FOR RING RTN EARTH  
CONNECT U10-U14 & U8-U16 FOR RING RTN BATT
- 5. TO BE PROVIDED AS REQUIRED.

| ISS | DATE     | CHKD   | APPD   | DEL    | ORDER | CHANGE                                                                               | NEW ZEALAND POST OFFICE ENGINEER-IN-CHIEF WELLINGTON                 |
|-----|----------|--------|--------|--------|-------|--------------------------------------------------------------------------------------|----------------------------------------------------------------------|
| A   | 22.6.66  | K.S.   | P.D.   | W.S.   | 98505 |                                                                                      | LONG LINE REPEATER<br>N.Z.P.O. P.A.B.X.<br>DISTANT EXTENSION SERVICE |
| B   | 17.4.68  | C.C.   | G.D.   | A.P.   | 86655 | NOTE 3.3 & CONN. PL2 ADDED.<br>WIRING CHANGED. NOTES 3.4 & 3.5<br>ADDED 3.2 AMENDED. |                                                                      |
| C   | 7.12.71  | E.H.G. | C.F.E. | P.M.C. | 50107 |                                                                                      |                                                                      |
| D   | 10.8.73  | G.R.B. | G.F.E. | W.M.   | 99752 | NOTE 3.5 DELETED.                                                                    | DRAWN TEL. SEC. TRACED / SWS.                                        |
| E   | 13.10.75 | H.B.B. | J.G.W. | SAJ    | 68120 | NOTE 3.5 AND RING RET<br>(BATT) LEAD ADDED.<br>SHT 1,2 AMD.                          |                                                                      |
| F   | 5.5.81   | B.W.I. | W.J.H. | N.S.   | 63808 |                                                                                      |                                                                      |
| G   | 3.5.83   | B.W.I. | R.J.S. | G.U.   | 38261 | NO CHANGE SHTS 1 & 2 AMD.                                                            |                                                                      |

SIZE SHEET  
F 3 OF 3  
33004