


1			2			3			4			5			
SHT NO	SIZE	SUB-TITLE	ISSUE			SHT NO	SIZE	SUB-TITLE	ISSUE						
26						1	A2	ROUTED SCHEMATIC (2-WIRE TERMINATION)	C	D	E				
27						2	A3	ISC (REF SHT. 1)	C	D					
28						3	A3	CROSS CONNECTIONS (REF SHT. 1)	C	D					
29						4	A3	RCCL (REF SHT. 1)	C	D					
30						5	A2	ROUTED SCHEMATIC (4-WIRE TERMINATION)	A	B	C				
31						6	A3	ISC (REF. SHT. 5)	A	B					
32						7	A3	CROSS CONNECTIONS (REF SHT. 5)	A	B					
33						8	A3	RCCL (REF. SHT. 5)	A	B	C	D			
34						9									
35						10									
36						11									
37						12									
38						13									
39						14									
40						15									
41						16									
42						17									
43						18									
44						19									
45						20									
46						21									
47						22									
48						23									
49						24									
50						25									

**NOTES :**  
 1. SHEETS 1-4 NOT TO BE USED FOR NEW WORK, REPLACED BY SHEETS 5-8 FOR ALL NEW INSTALLATIONS.

F	17-1-85	PJMAJB	38346	PR	CGG	RETRACED TO SIZE A3	
E	8-10-74	PMC	122304	KG	CJW	SHTS 5 & 8 AMENDED	
D	31-5-71	AWL	34084	KG	CJW	SHTS 1 & 8 AMENDED	
C	25-5-70	AP	13641	KLJ	CJW	SHTS 1-4 AMENDED, SHTS 5-8 & IND. ADDED	
ISS	DATE	DEL	DC	ORDER	CK	APPD	CHANGE

**INCOMING LIMITED FACILITY  
 JUNCTION RELAY SET  
 NZ UAX 13  
 OUT-OF-BAND CARRIER SYSTEM**  
 (INDEX SHEET)

**ENGR'S RECORD**

DRN : SS.	CKD : KLJ	ORIGIN : SS.
TCD : AP	APPD : CJW	STANDARD
NZPO ENGINEER-IN-CHIEF, WELLINGTON		
	INDEX	EC 31863
SIZE A3		



1

2

3

4

5

A

B

C

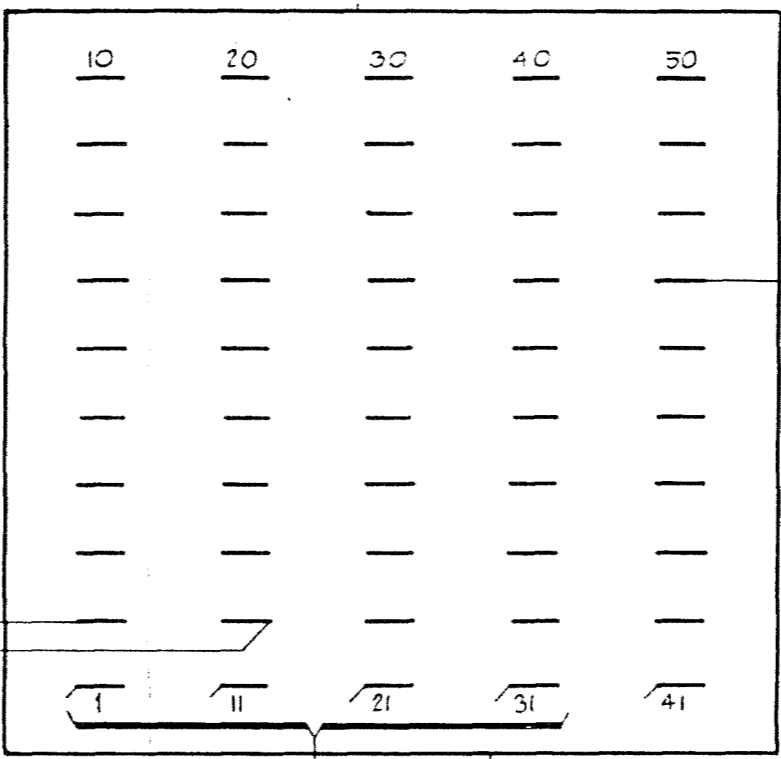
D

A

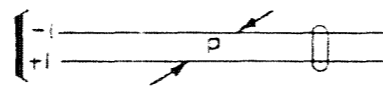
B

C

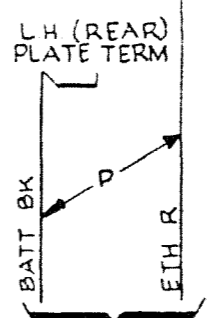
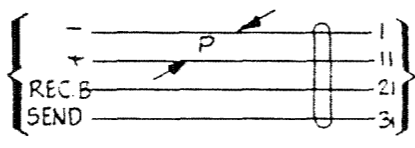
D



TO GBW13980  
OR EQUIV



TO OOB  
CARRIER




NOTES  
ALL WIRING TO BE 0.5mm UNLESS OTHERWISE SPECIFIED

NOT TO BE USED FOR NEW WORK

ENGR'S RECORD

ISS	DATE	CHANGE
D	17.1.85	RETRACED & METRICATED
C	25.5.70	RESTRICTION OF USE NOTE ADDED
B	13.9.65	NO CHANGE SHEET 4 AMENDED
A	22.12.64	

INCOMING LIMITED FACILITY  
JUNCTION RELAY SET  
NZ U.A.X. 13  
OUT OF BAND  
CARRIER SYSTEM

DRN : SS.	CKD : NTE	ORIGIN : SS.
TCD : BA	APPD : AC	STANDARD
NZPO ENGINEER - IN - CHIEF, WELLINGTON		
	SHT 2	EC 31863
	SIZE A3	

UD 235

1

2

3

4

5

1

2

3

4

5

A

A

B

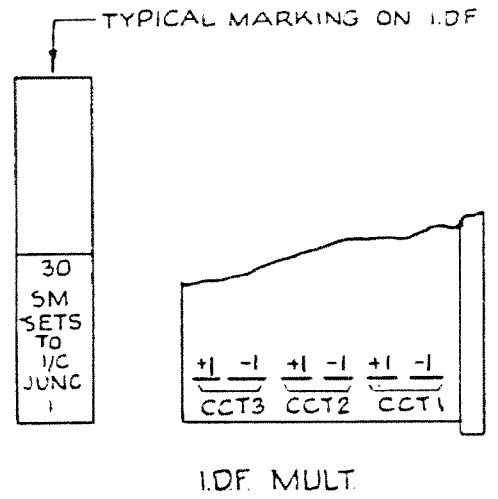
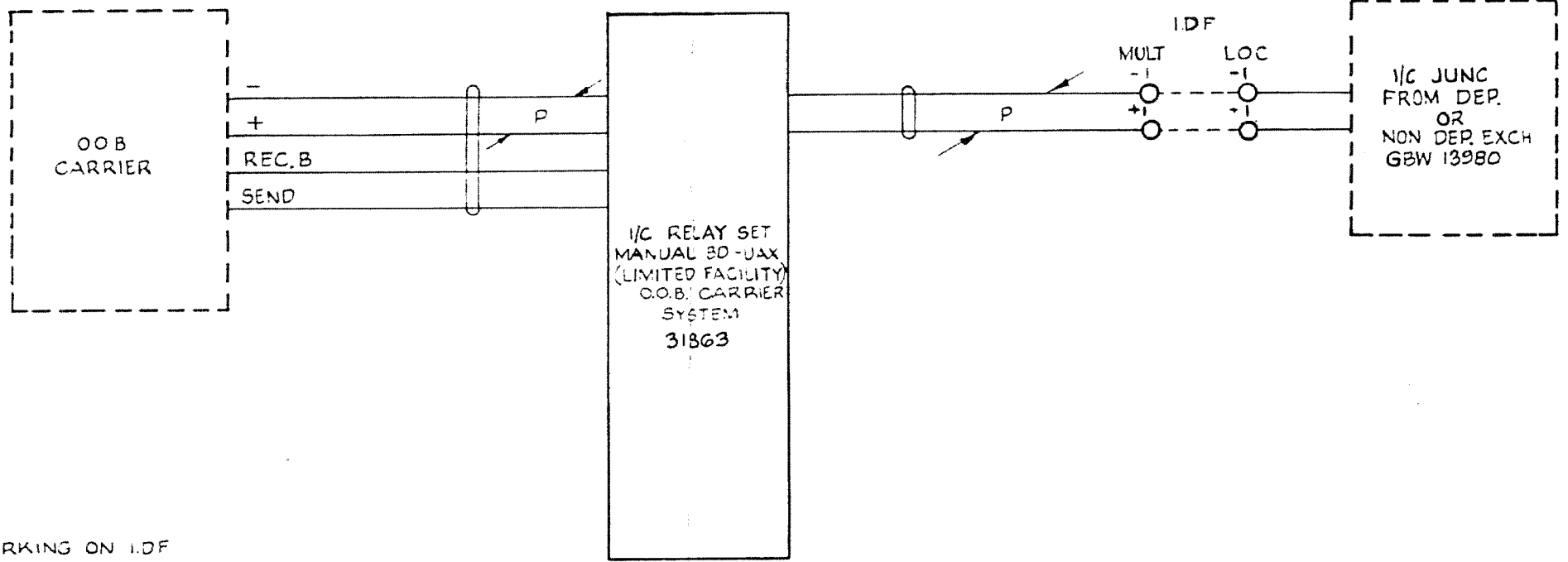
B

C

C

D

D



NOT TO BE USED FOR NEW WORK

### ENGR'S RECORD

ISS	DATE	CHANGE
D	17.1.85	RETRACED TO SIZE A3
C	25.5.70	RESTRICTION OF USE NOTE ADDED
B	13.9.65	NO CHANGE SHEET 4 AMENDED
A	22.12.64	

INCOMING LIMITED FACILITY  
 JUNCTION RELAY SET  
 NZ U.A.X. 13  
 OUT OF BAND  
 CARRIER SYSTEM

DRN :	SS	CKD :	NTE	ORIGIN :	SS.
TCD :	BA	APPD :	AC	STANDARD	
NZPO ENGINEER-IN-CHIEF, WELLINGTON					
	SHT	3	EC	31863	
	SIZE	A3			

U.235

1

2

3

4

5

1

2

3

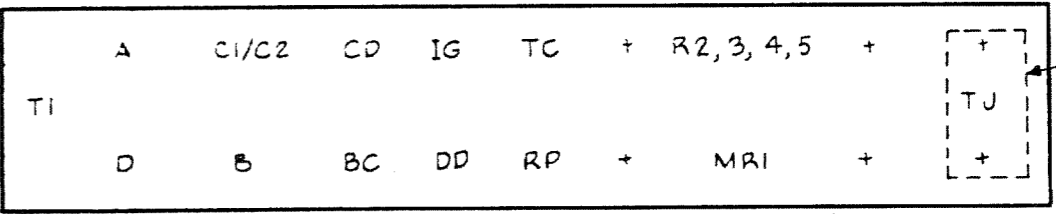
4

5

### NZ.P.O. RELAY CODES & COMPONENTS LIST.

RELAY NAME	NZPO CODE	COY CODE	B.C.C. CODE	BPO CODE	NOTES	COMPONENT DESIGNATION	BPO CODE	COY CODE	NOTES
A			HSD 702		B	R1	G		
B			B1751			R2	12		
BC			B5137			R3	12		
CD	54128AD7					R4	12		
D			B10301			R5	12		WHEN PROVIDED
DD	50341GD11					C1	102C		
IG	50347GD03					C2	101		
RP	54129AD6					RX1,2,3	NON LINEAR N°2		
TC			B6120			TI		GEC P97129	
						MRI	2/2AZ		
						ISC	121		
						TJ	21H		

NOTES A SPECIAL FACTORS OF SAFETY B SPECIAL ADJUSTMENTS C CCT POINTS OR MODIFICATIONS




MOUNTING PLATE BPO F151/20AH (FRONT VIEW)

### NOT TO BE USED FOR NEW WORK

### ENGR'S RECORD

ISS	DATE	CHANGE
D	17.4.85	RETRACED TO SIZE A3
C	25.5.70	RESTRICTION OF USE NOTE ADDED
B	13.9.65	C1 & C2 CODES CORRECTED
A	22.12.64	

INCOMING LIMITED FACILITY  
 JUNCTION RELAY SET  
 NZ U.A.X. 13  
 OUT OF BAND  
 CARRIER SYSTEM

DRN : SS.	CKD : NTE	ORIGIN : SS.
TCD : BA	APPD : AC	STANDARD
NZPO ENGINEER - IN - CHIEF, WELLINGTON		
	SHT 4	EC 31863
	SIZE A3	

1

2

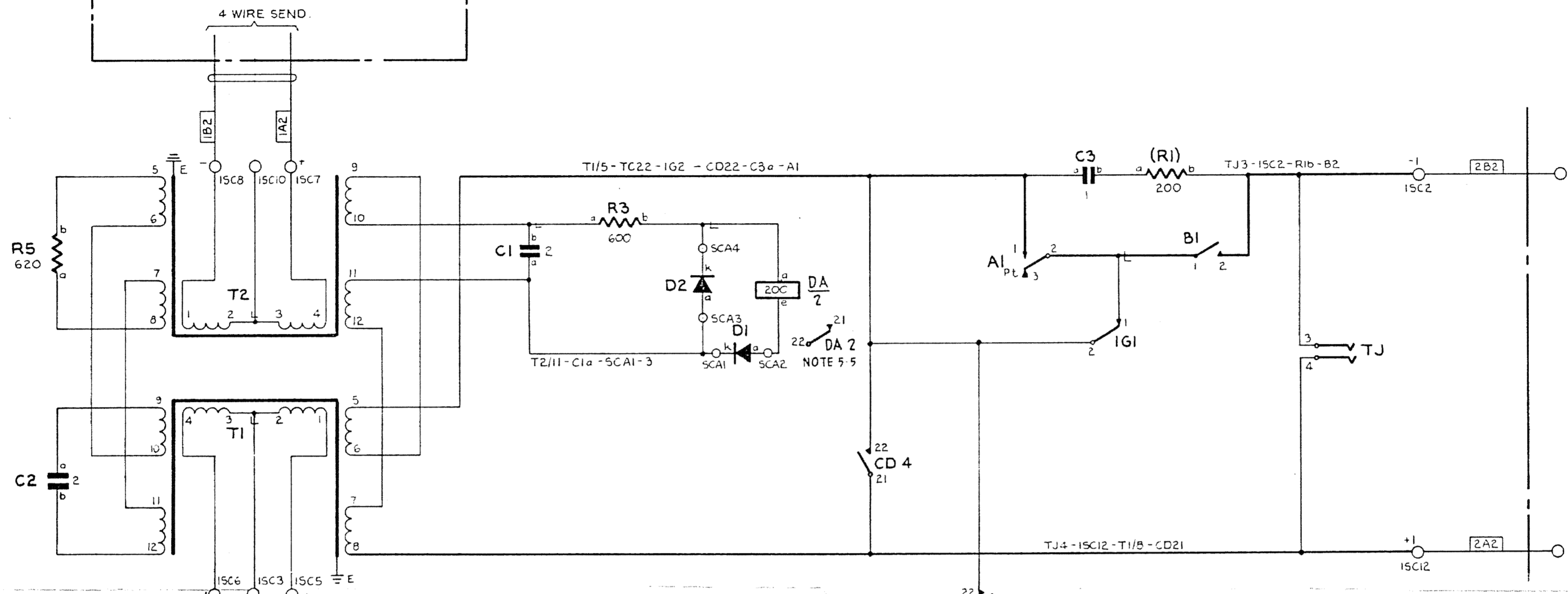
3

4

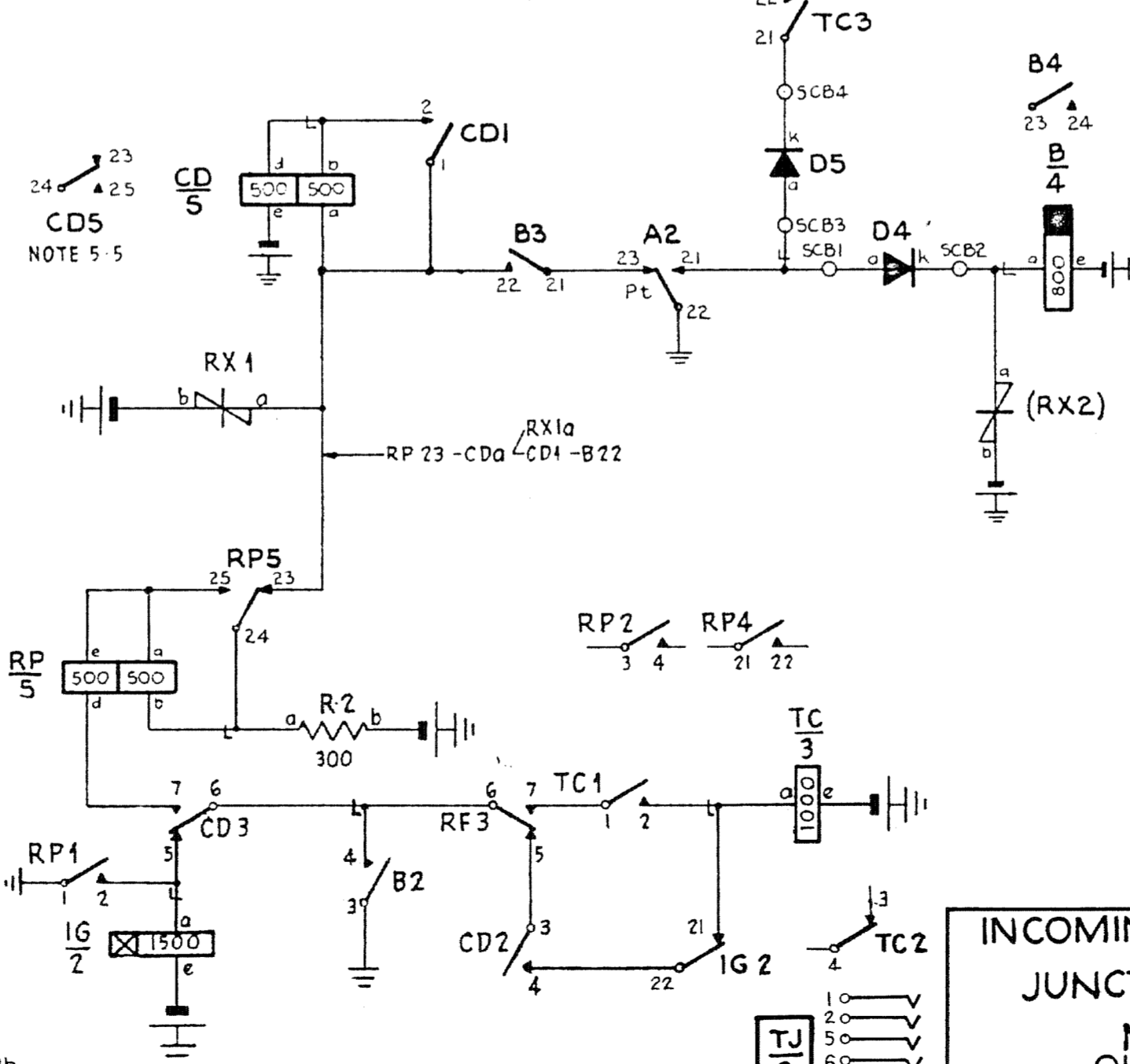
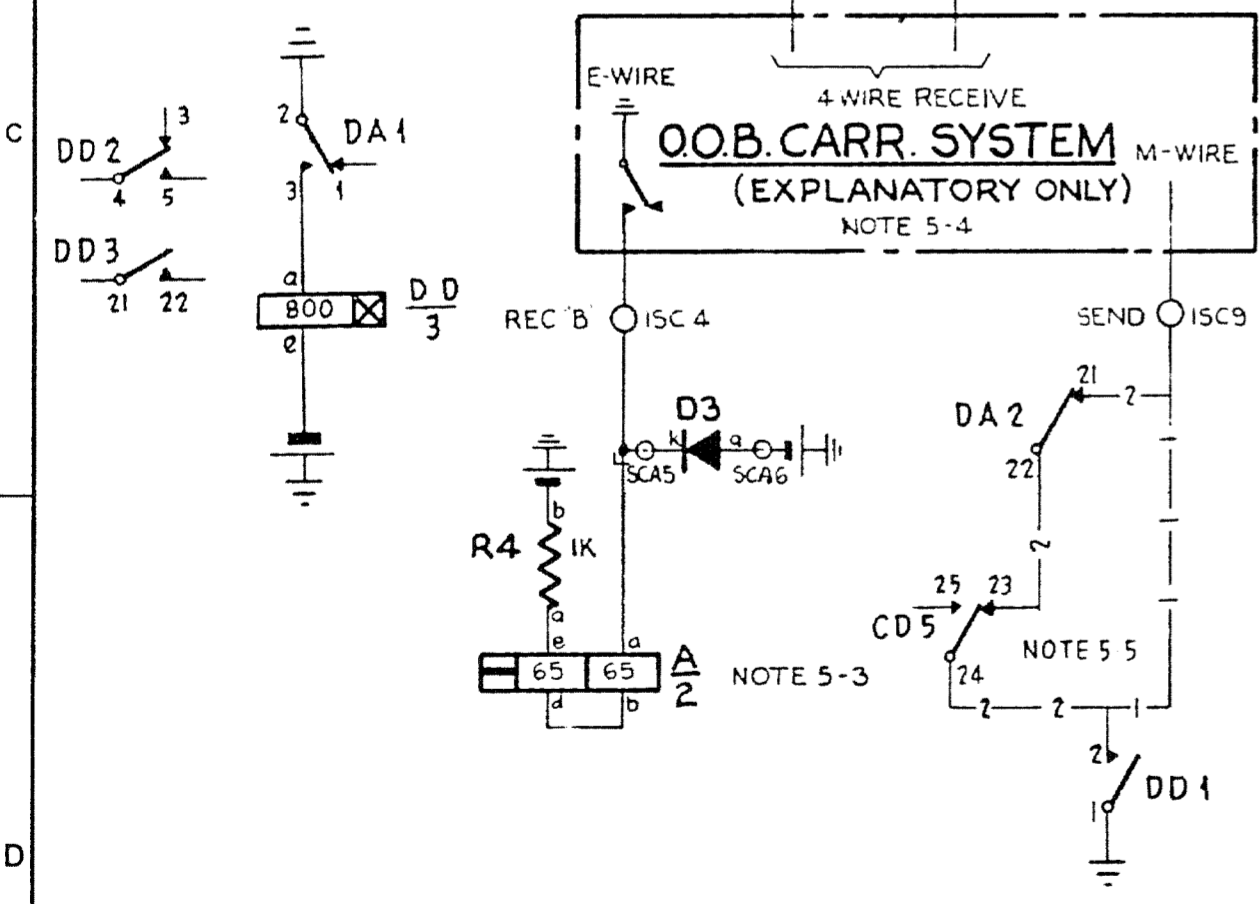
5

UJ 235

**O.O.B. CARRIER SYSTEM**  
(EXPLANATORY ONLY)  
NOTE 5-4



**O.O.B. CARR. SYSTEM**  
(EXPLANATORY ONLY)  
NOTE 5-4



- NOTES :-**
- 5.1 FUSING 1.5A PER CIRCUIT
  - 5.2 ALL WIRING 0.5mm UNLESS OTHERWISE SPECIFIED.
  - 5.3 ON SOME EARLY EQUIP. RELAY A IS 53/53 WIRED AS SHOWN ON SHT. 1.
  - 5.4 WHEN E & M WIRES ARE SUPERIMPOSED OVER SPEECH PATHS, STRAP TERM 15C3 TO 15C4 & 15C9 TO 15C10 OMIT WIRING 'M' TO SEND & E TO REC B.
  - 5.5 (a) WHEN NZ 3300! OR EQUIV. USED AT PARENT, PROVIDE CONNS -1-1-1-
  - (b) WHEN NZ 29413 OR EQUIV. USED AT PARENT PROVIDE CD 5, DA 2 & CONNS -2-2-2-

3ATT. BK 0.7mm FUSE [4B2] 15C49  
ETH. R. 0.7mm ETH. BAR [4A2] 15C47  
BATT. V. - 15C49 - R2b - R4b - TCe - IGe - DDa - RX1b/RX2b  
ETH. R. - 15C47 T2/E-T1/E-RP1-DD: B3-D2-A22

**INCOMING LIMITED FACILITY  
JUNCTION RELAY SET  
NZ UAX 13  
OUT-OF-BAND  
CARRIER SYSTEM**

ISS DATE			CHANGE		
DRN: SS.	CKD: KJL	ORIGIN: SS.			
TCD: AP	APPD: CJW	STANDARD			
NZPO ENGINEER-IN-CHIEF, WELLINGTON					
SHT 5		EC		31863	
SIZE A2					

**ENGR'S RECORD**

UD 236

1

2

3

4

5

A

A

B

B

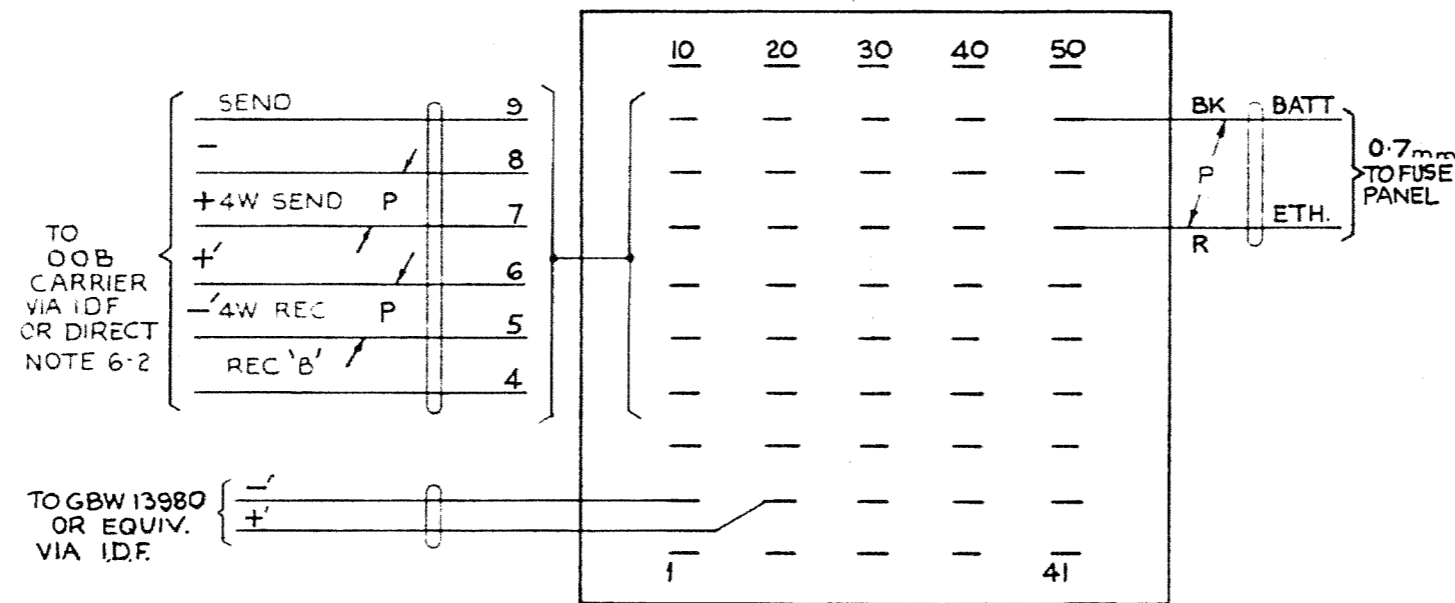
C

C

D

D

### ISC



#### NOTE :-

- 6-1 ALL WIRING TO BE 0.5mm UNLESS OTHERWISE SPECIFIED.
- 6-2 SEE NOTE 5-4 SHT 5

			INCOMING LIMITED FACILITY JUNCTION RELAY SET NZ UAX 13 OUT-OF-BAND CARRIER SYSTEM			DRN SS	CKD KLJ	ORIGIN SS
						TCD AP	APPD CJW	STANDARD
			NZPO ENGINEER-IN-CHIEF WELLINGTON					
						SHT 6	EC	31863
						SIZE A3		
B	17-1-85	RETRACED & METRICATED						
A	25-5-70							
ISS	DATE	CHANGE						

ENGINEER'S RECORD

2

3

5

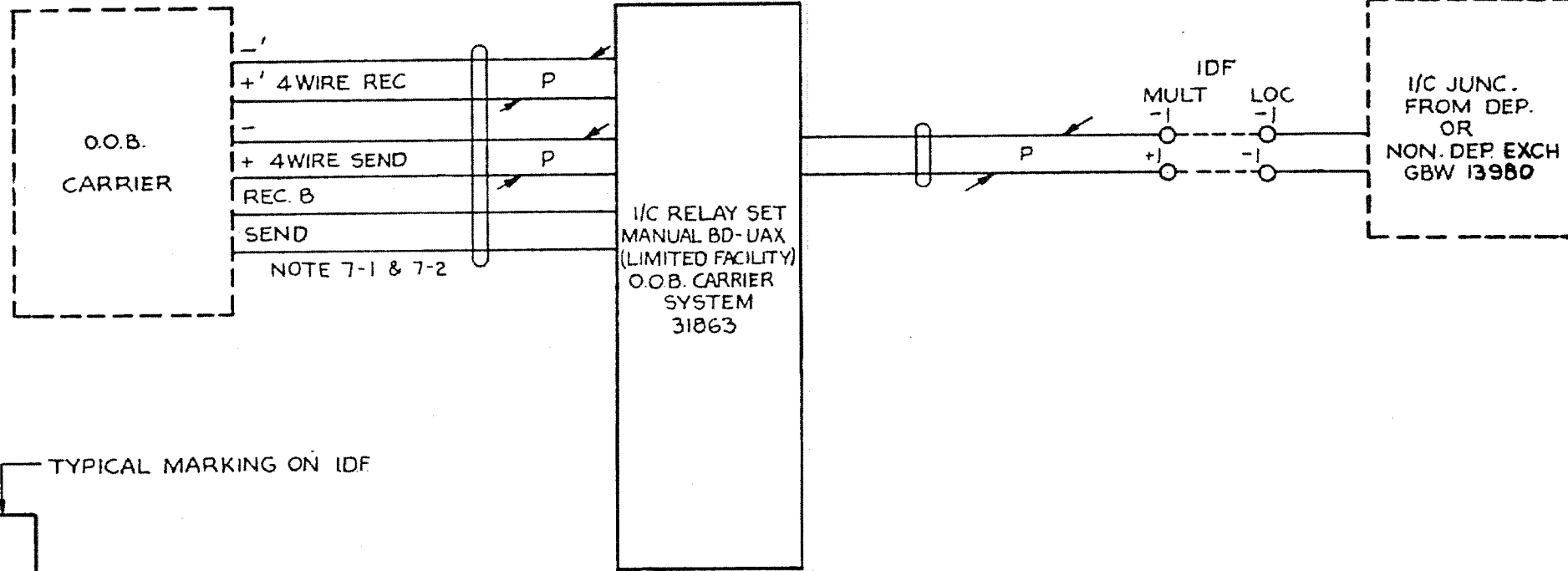
1

2

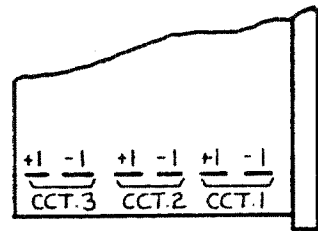
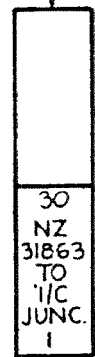
3

4

5



TYPICAL MARKING ON IDF



IDF. MULT.

NOTES

- 7-1 CABLED VIA IDF WHEN SPECIFIED
- 7-2 FOR SIMPLEX WORKING SEE SHT. 5 NOTE 5-4

ENGR'S RECORD

ISS	DATE	CHANGE	<b>INCOMING LIMITED FACILITY JUNCTION RELAY SET NZ UAX 13 OUT-OF-BAND CARRIER SYSTEM</b>				DRN	SS	CKD	KLJ	ORIGIN	SS					
							TCD	AP	APPD	CJW	STANDARD						
							NZPO ENGINEER-IN-CHIEF WELLINGTON							SHT	7	EC	31863
							SIZE	A3									

B 17.1.85 RETRACED TO SIZE A3

A 20.5.70

UD 235

1

2

3

4

5

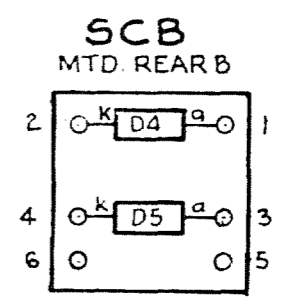
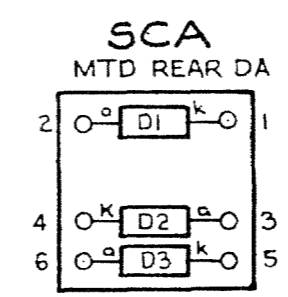
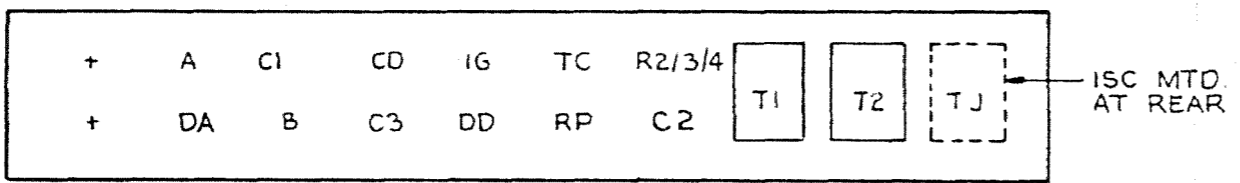


# RELAY CODES AND COMPONENTS LIST

RELAY NAME	B.C.C. CODE	N.Z.P.O. CODE	B.P.O. CODE	COY. CODE	NOTES	S/L	COMPONENT DESIGNATION	B.P.O. CODE	COY. CODE	NOTES	S/L	MISC. COMPONENTS	NOTES	S/L
A	HSD710				B	LD90B	R1	6		200 ~	KB169	MTG PLATE	F151/20AH	LH661G
B	B1751					WS	R2	9		300 ~	KB226	CAP. CLIP	42	KC404
CD		54128 AD7				L172G	R3	12		600 ~	KB292	CONN. STRIP	121 (ISC)	LH205
DA	B10301					L38A	R4	12		1K	KB344	MTG. BRKT.	(ISC)	LH138
DD		50341 GD11				L384D	R5		RADIO TYPE	620 ~ HIGH STAB 1%	ER853K	STRIP CONN.	SCA SCB	LH814
IG		50347 GD13				L385A	C1	102		2 $\mu$ F	KC317	INS. PLATE	" "	LH610
RP		54129 AD6				L172H	C2	102		2 $\mu$ F	KC317	SCREWS	" "	LE811
TC	B6120					L75	C3	101		1 $\mu$ F	KC250	RES. POST	2.5"	KB9A
							DI - D5		IN 4003	DIODES	K905	TEST JACK	21H	LC148
							T1 - T2		TA 2272	TRIMAX	CA13			
							RX1 - RX2	2		ATMITE	K996			

**NOTES**  
 A - SPECIAL FACTORS OF SAFETY B - SPECIAL ADJUST. C - CCT. POINTS OR MODS.

## LAYOUT



## ENGR'S RECORD

ISS	DATE	CHANGE
		D 17.1.85 RETRACED TO SIZE A3
		C 8.10.74 RELAY DA WAS D
		B 31.5.71 RELAY S/L ADDED
		A 25.5.70

**INCOMING LIMITED FACILITY  
 JUNCTION RELAY SET**  
**NZ U.A.X. 13**  
**OUT OF BAND  
 CARRIER SYSTEM**

DRN	SS	CKD	NTE	ORIGIN	SS
TCD	AP	APPD	AC	STANDARD	
NZPO ENGINEER-IN-CHIEF WELLINGTON					
SHT <b>8</b> SIZE <b>A3</b>		EC	<b>31863</b>		

UD 235