

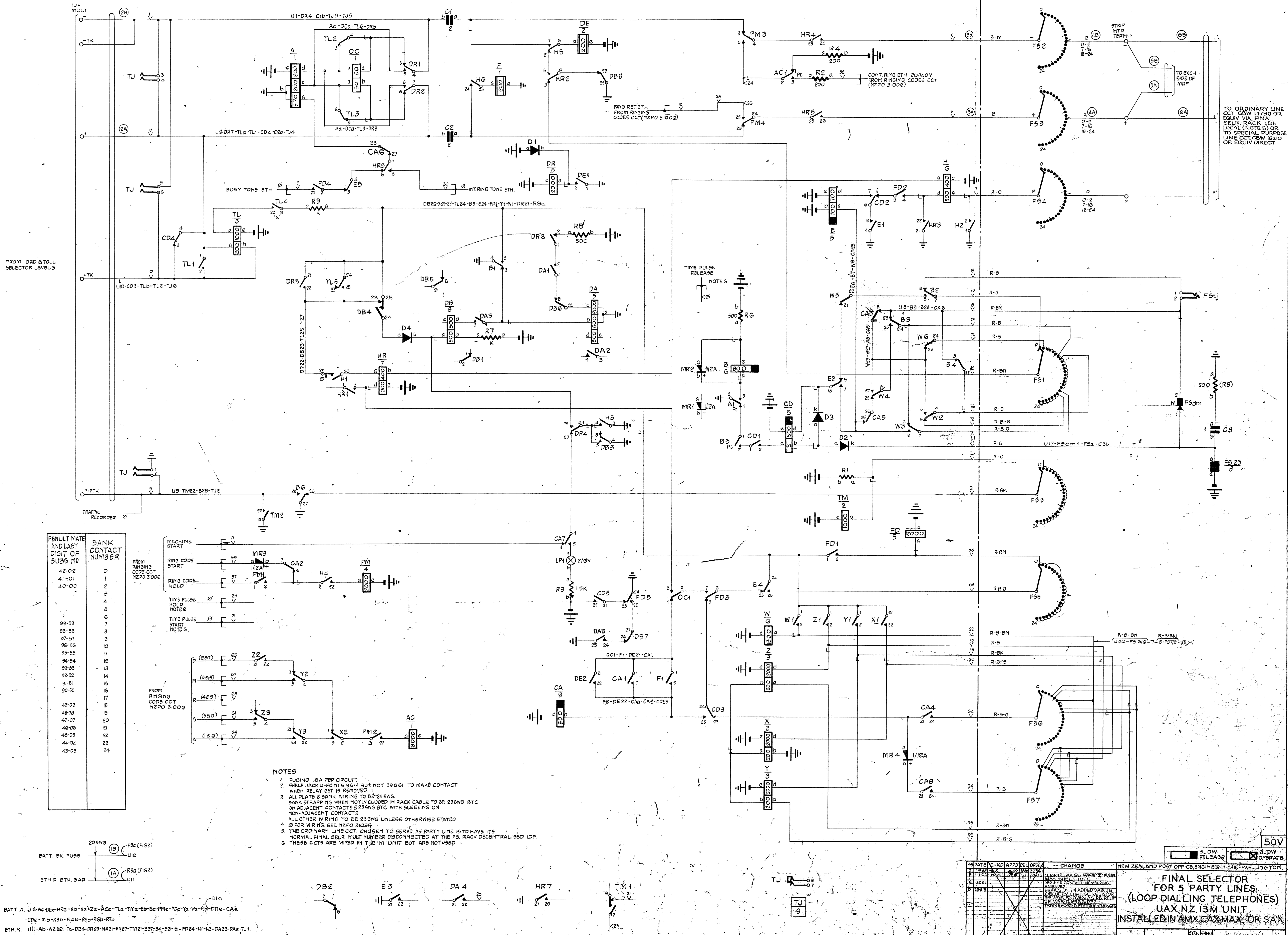
SHEET N°	SIZE	SUB TITLE	ISSUE							
1	L	SCHEMATIC	C	D						
2	S	U POINT WIRING	B	C	D					
3	A4	CROSS CONNECTIONS	B	C						
4	F	CROSS CONNECTIONS	B							
5	F	R.C.C.L.	C	D						
6	F	R.C.C.L.	C	D						
7										
8										
9										
10										
11										
12										
13										
14										
15										
16										
17										
18										
19										
20										

[Empty space for notes or drawings]

ISS.	DATE	CHKD.	APPD.	DEL.	ORDER	CHANGE	NEW ZEALAND POST OFFICE, ENGINEER-IN-CHIEF, WELLINGTON.					
C	10-2-67	JDL	CW	JAG	58212	INDEX SHEET INCORP. AND SHTS 1, 5 & 6 ADVANCED IN ISSUE	FINAL SELECTOR FOR 5 PARTY LINES LOOP DIALLING TELEPHONES U.A.X. N.Z. 13M UNIT INSTALLED IN A.M.X. C.A.X. M.A.X. OR S.A.X. (INDEX SHEET)					
D	8-4-69	R.C.	CW	A.P.	93265	SHT. 2 AMENDED.						
E	23-8-73	DLM	CW	A.O.	99776	SHTS 1, 2, 5 & 6 AMENDED & SHT 3 RETRACED.						
ENGR'S RECORD							ORIGIN	TEL. EQPT. SECT.	SIZE	SHEET	31004	
							F	IND				
							DRAWN	TEL. SEC.	TRACED	JAG		

FIG. 1.

FIG. 2.



PENULTIMATE AND LAST DIGIT OF SUBS N2	BANK CONTACT NUMBER
42-02	0
41-01	1
40-00	2
	3
	4
	5
99-99	7
98-98	8
97-97	9
96-96	10
95-95	11
94-94	12
93-93	13
92-92	14
91-91	15
90-90	16
	17
49-09	18
48-08	19
47-07	20
46-06	21
45-05	22
44-04	23
43-03	24

- NOTES**
- FUSING 1.5A PER CIRCUIT.
 - SHelf JACK-U-POINTS 36H BUT NOT 99.6G TO MAKE CONTACT WHEN RELAY SET IS REMOVED.
 - ALL PLATE & BANK WIRING TO BE 23SWG. BANK STRAPPING WHEN NOT INCLUDED IN RACK CABLE TO BE 23SWG BTC. ON ADJACENT CONTACTS & 23SWG BTC WITH SLEEVING ON NON-ADJACENT CONTACTS. ALL OTHER WIRING TO BE 23SWG UNLESS OTHERWISE STATED.
 - FOR WIRING SEE NZPO 3100G.
 - THE ORDINARY LINE CCT. CHOSEN TO SERVE AS PARTY LINE IS TO HAVE ITS NORMAL FINAL SELR. MULT. NUMBER DISCONNECTED AT THE FS. RACK DECENTRALISED IDF.
 - THESE CCTS ARE WIRED IN THE 'M' UNIT BUT ARE NOT USED.

50V

NEW ZEALAND POST OFFICE ENGINEER IN CHIEF, WELLINGTON.

FINAL SELECTOR FOR 5 PARTY LINES (LOOP DIALLING TELEPHONES) UAX NZ 13M UNIT INSTALLED IN AMX, CAX, MAX OR SAX

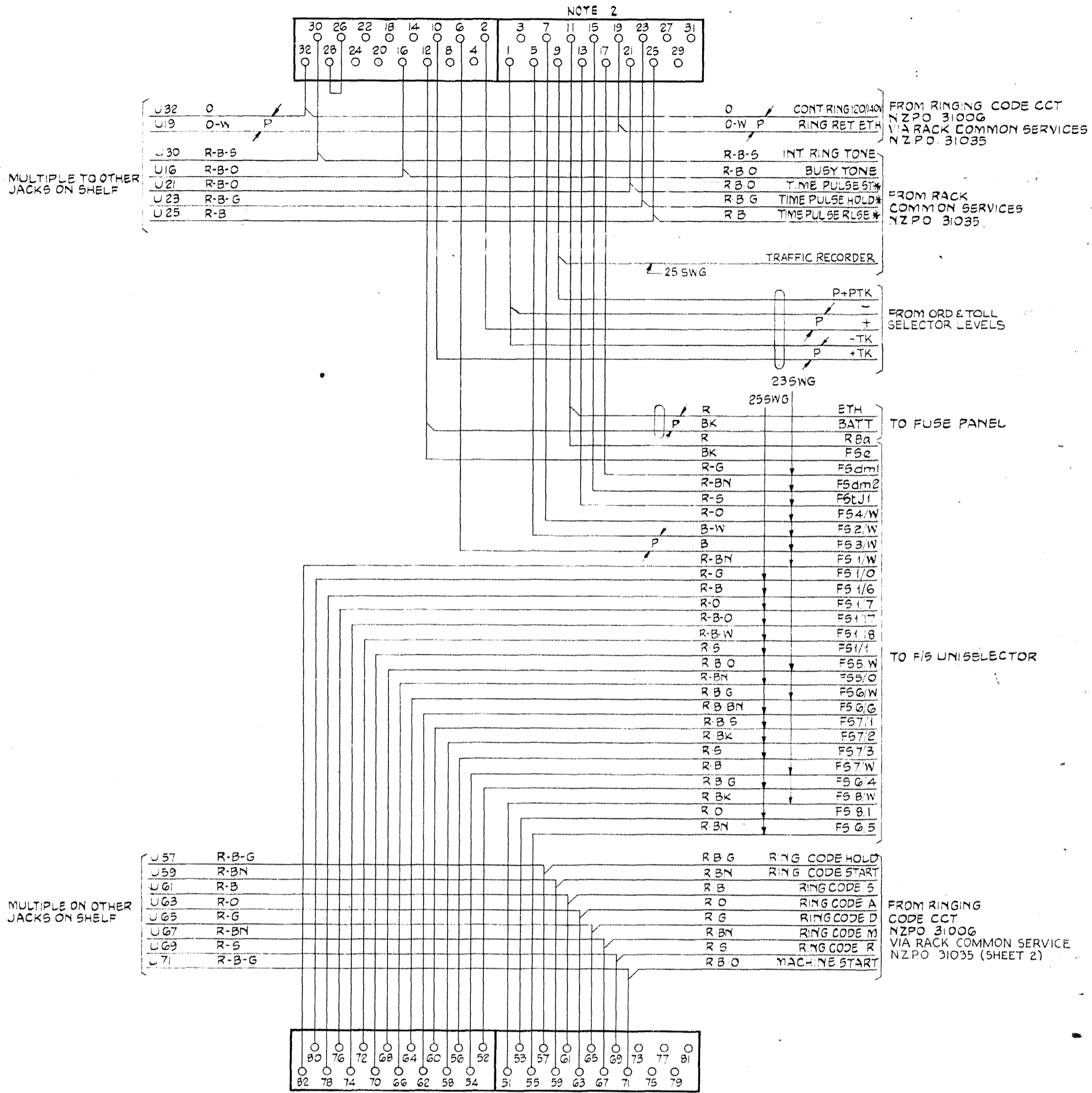
DATE: 1952
 CHECKED: []
 APPROVED: []
 DELIVERED: []
 ORDER NO.: []
 UNIT: []
 WIRING: []
 PARTS: []
 PRICE: []
 TOTAL: []

ORIGIN: []
 REFERENCE: []
 DRAWING: []

31004

FIG. 1.

AS SEEN FROM REAR



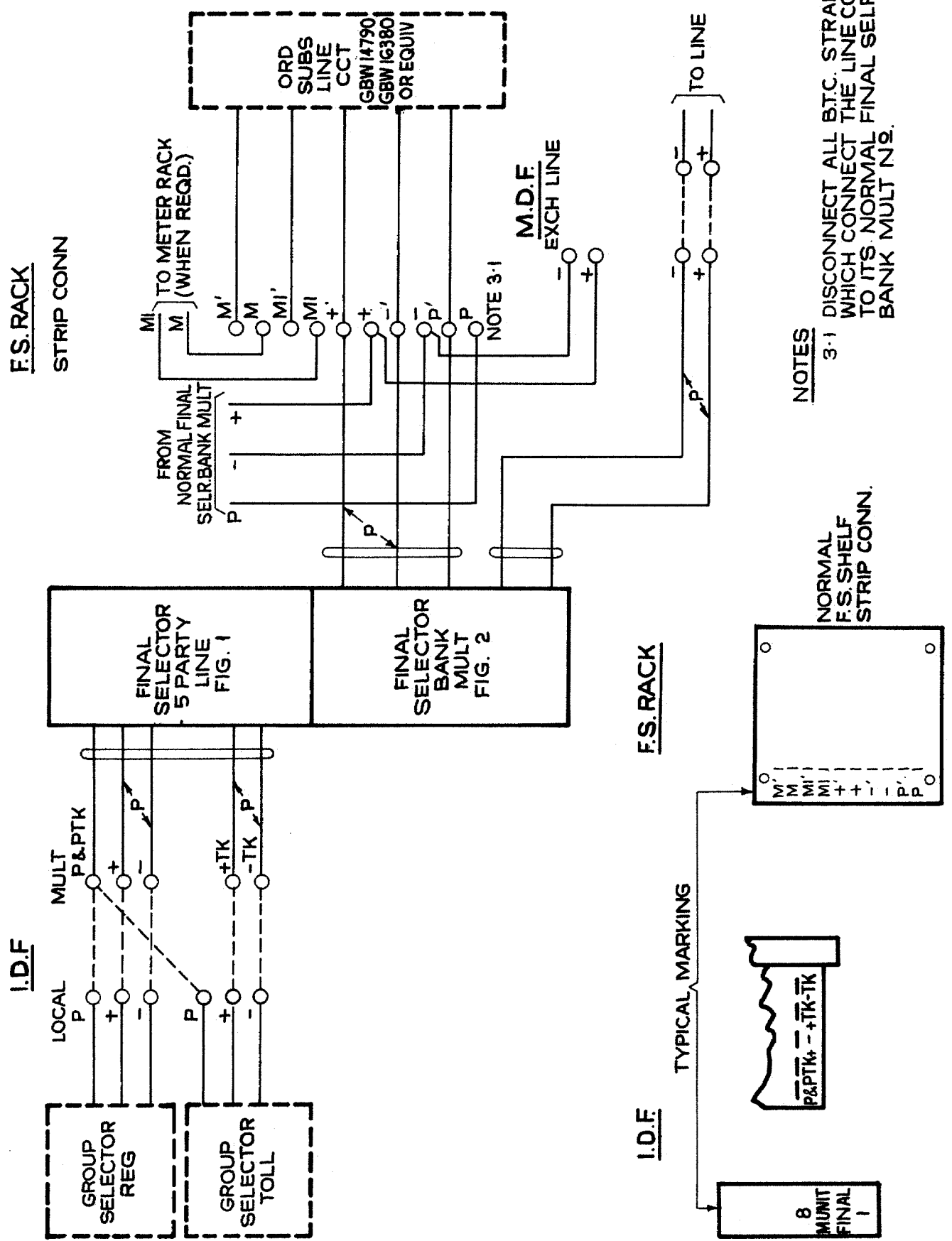
NOTES

- 1 ALL WIRE TO BE 20 SWG UNLESS OTHERWISE SPECIFIED
- 2 SHELF JACK U POINTS 9 & 11 BUT NOT 59 & 61 TO MAKE CONTACT WHEN RELAY SET IS REMOVED
- 3 * THESE CIRCUITS ARE WIRED IN THE M UNIT BUT ARE NOT IN USE

ENGR'S RECORD

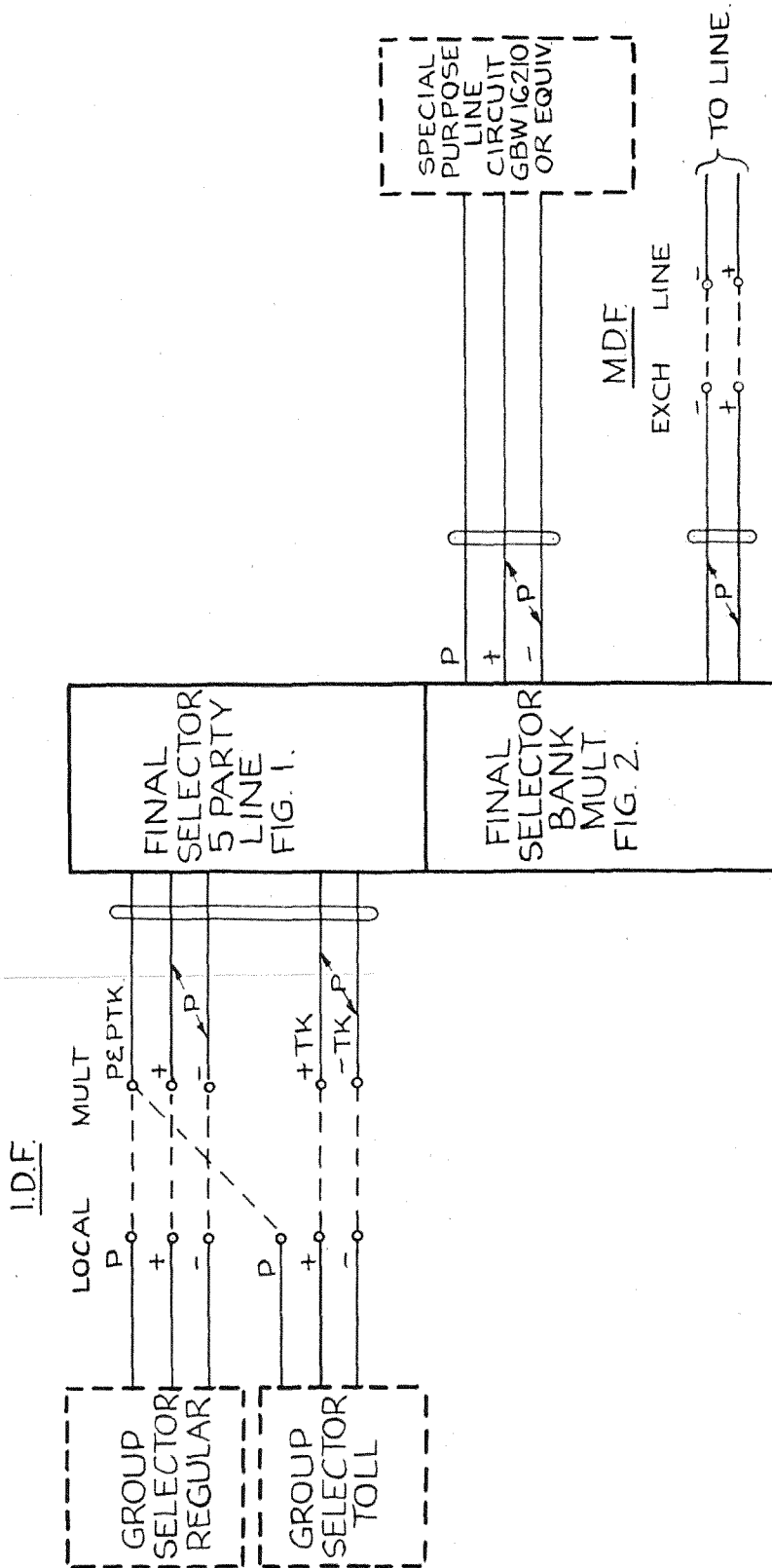
ISS	DATE	CHKD	APPD	DEL	ORDR	CHANGE	NEW ZEALAND POST OFFICE, ENGINEER-IN-CHIEF, WELLINGTON.												
A	11.9.63						<p>FINAL SELECTOR FOR 5 PARTY LINES (LOOP DIALLING TELEPHONES) UAX NZ 13M UNIT INSTALLED IN AMX, CAX, MAX, OR SAX.</p>												
B	1.7.64	N.T.E.				1 UNIT PULSE WAS 2 PULSE NOTE 3 AMENDED WAS SHEET 1 OF 5													
C	8.4.69					F5 1/3 CORRECTED TO F5 1/6 S&1 UNIT PULSE TO UPTS													
D	23.8.73					27 & 31 DELETED.													
<table border="1" style="width: 100%; border-collapse: collapse;"> <tr> <td>ORIGIN</td> <td>TEL EQPT SECT</td> <td>SIZE</td> <td>SHEET</td> </tr> <tr> <td>REFERENCE</td> <td>G3W 4400</td> <td>S</td> <td>2</td> </tr> <tr> <td>DRAWN</td> <td>TEL E SECT TRACED</td> <td colspan="2" style="text-align: center; font-size: 2em;">31004</td> </tr> </table>							ORIGIN	TEL EQPT SECT	SIZE	SHEET	REFERENCE	G3W 4400	S	2	DRAWN	TEL E SECT TRACED	31004		
ORIGIN	TEL EQPT SECT	SIZE	SHEET																
REFERENCE	G3W 4400	S	2																
DRAWN	TEL E SECT TRACED	31004																	

FIGA CONNS FOR USE OF ORDINARY LINE CIRCUIT AS AN M UNIT LINE.

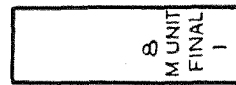
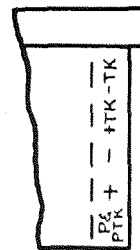


DATE	ISS	CHANGE	NZPO ENGINEER IN CHIEF WELLINGTON
11-9-63	A		FINAL SELECTOR FOR 5 PARTY LINES (LOOP DIALLING TELEPHONES) UAX NZ 13M UNIT INSTALLED IN AMX, CAX, MAX, OR SAX
23-8-73	C	RETRACED FROM ISS B OF 1-7-64	
REF: GBW 14400		SHT 3	31004
ORIGIN: T-EQPT		A4	
DWN: T-EQPT		TCD: P.MS	

FIG. B. CONNS FOR USE OF SPECIAL PURPOSE LINE CIRCUIT AS AN M UNIT LINE.



I.D.F.



B 1764 N.T.E. 89 B. T.L. 72875 NEW SHEET.

~~ENGR'S RECORD~~

NEW ZEALAND POST OFFICE, ENGINEER-IN-CHIEF, WELLINGTON

FINAL SELECTOR
FOR 5 PARTY LINES
(LOOP DIALLING TELEPHONES)
U.A.X.N.Z 13M UNIT
INSTALLED IN AMX, CAX, MAX, OR SAX.

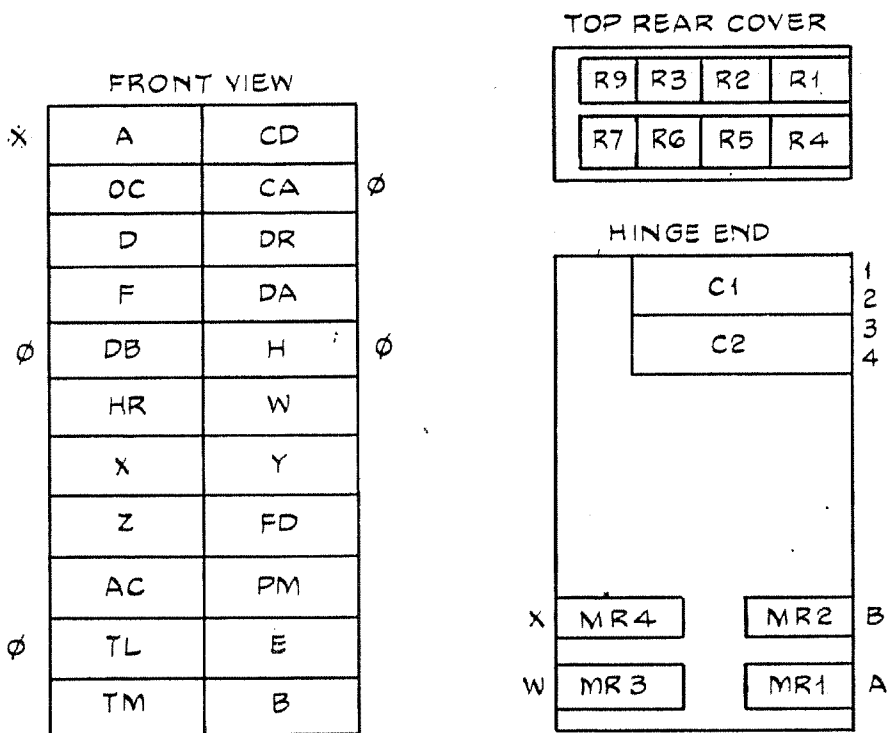
NO.	TEL. EQPT. SECT	F. 4	31004
NO.	T.L.		

NZPO RELAY CODES & COMPONENTS LIST.

RELAY NAME	NZPO CODE	COY CODE	B.C.C. CODE	B.P.O. CODE	NOTES	COMPONENT DESIGNATION	B.P.O. CODE	COY CODE	NOTES
A			21033		B	C1	MC102		
AC			20801P			C2	MC102		
B			20786P		B	MR1	1/2 AZ		
CA			20788			MR2	1/2 AZ		
CD			20787			MR3	1/2 AZ		
D			1062			MR4	1/2 AZ		
DA			20789			R1, R9	N°9		1K Ω
DB			20790			R2, R4	N°9		200 Ω
DR			71552			R3	N°12		1.15K Ω
E			20802			R5, R6	N°9		500 Ω
F			20753		B	R7	N°12		1K Ω
FD			7794			RESISTOR POSTS	MTG.		3.75"
H			20791			MTG PLATE	R52/ 3000/22		
HR			20771			R8	G		200 Ω FIG. 2

NOTES - A SPECIAL FACTORS OF SAFETY B SPECIAL ADJUSTMENTS. C CCT POINTS OR MODIFICATIONS.

LAYOUT



Ø FITTED WITH RELAY GUARD 1/56U/54. CAPACITOR BOX
 X FITTED WITH RELAY SHIELD 1/55H/1.

ISS. DATE	MAKED	APP'D	DEL. ORDER	CHANGE	NEW ZEALAND POST OFFICE ENGINEER-IN-CHIEF WELLINGTON.
A 11/9/63	4/6	MMP	66347		COMPONENTS LAYOUT FOR CIRCUIT TITLED:- FINAL SELECTOR FOR 5 PARTY LINES (LOOP DIALLING TELEPHONES) UAX NZ 13M UNIT INSTALLED IN AMX.CAX.MAX.OR.SAX.
B 11/7/64	N.E.	GB	TL 71975	WAS SHEET 40E5	
C 10/2/67				M.N.O.Z. AMENDMENTS	
D 23/8/73				RELAYS A, B & F NOTED FOR SPECIAL ADJUSTMENTS R9 WAS SHOWN AS R8	
ENGINEER'S RECORD					ORIGIN TEL. EQPT SECT REFERENCE GBW 14400 DRAWN TEL. E. SEC TRACED / 07
				SIZE SHEET F 5	31004

NZ.P.O. RELAY CODES & COMPONENTS LIST.

RELAY NAME	NZ.P.O. CODE	COY. CODE	ACC. CODE	B.P.O. CODE	NOTES	COMPONENT DESIGNATION	B.P.O. CODE	COY. CODE	NOTES
OC			4597			C3	101		FIG. 2
PM			1007			D1		IN4003	OR EQUIV MTD REAR OF RELAY DR
TL			5819			D2 & D3		IN4003	OR EQUIV MTD REAR OF RELAY CD
TM			20797			D4		IN4003	OR EQUIV MTD REAR OR RELAY DB
W			21104						
X			21106						
Y			21007						
Z			21105						

NOTES - A SPECIAL FACTORS OF SAFETY B SPECIAL ADJUSTMENTS. C CCT POINTS OR MODIFICATIONS.

ISS.	DATE	BY	CHKD.	APPD.	DEL.	ORDER	CHANGE
A	11.9.63	410					NEW SHEET 50E5.
B	7.64	N.T.E.	1076			TL 17875	C3 ADDED
C	10.2.67						DICDES DI-D4 ADDED.
D	23.8.73						

NEW ZEALAND POST OFFICE ENGINEER-IN-CHIEF, WELLINGTON.

COMPONENTS LAYOUT FOR CIRCUIT
TITLED:-
FINAL SELECTOR
FOR 5 PARTY LINES
(LOOP DIALLING TELEPHONES)
UAX NZ 13M UNIT
INSTALLED IN AMX, CAX, MAX, OR SAX

ORIGIN	TEC. EQPT. SECT.	SIZE	SHEET
REFERENCE	GBW 14400	F	6
DRAWN			31004
TEL. E. SEC. TRACED			