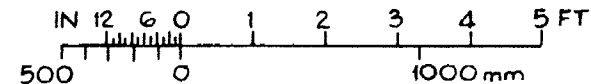


NOTES :

- 1 FOR TIE BARS ETC. SEE I.S. 1130 PARA 2.9.0
- 2 FOR TRUNKING & EQUIPMENT SEE DRG.
- 3 FOR EQUIPMENT OF 'B' UNIT SEE DRG.



SCALE : $\frac{3}{8}'' = 1'-0''$

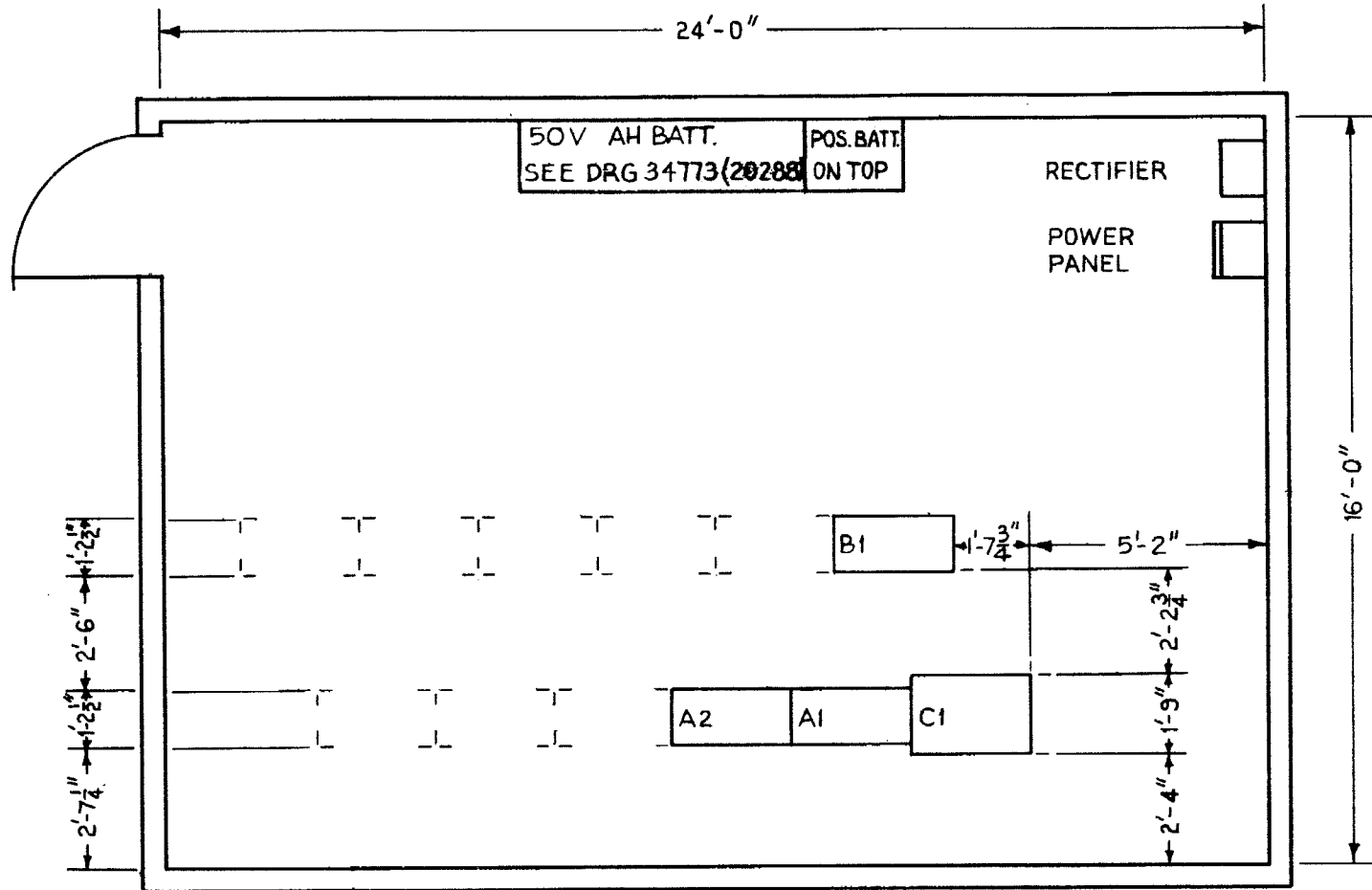
FLOOR PLAN

UAX

DEL	CKD	APD	ORDER	DATE	ISS	CHANGE

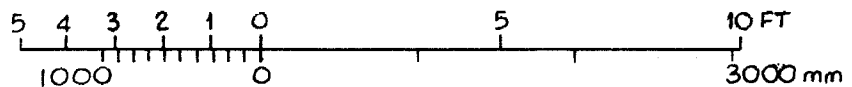
N. Z. P. O. ENGINEER-IN-CHIEF WELLINGTON	
COY. N ^o	ORIGIN : T-EQPT
	DRAWN : T-EQPT TRACED : S.W.S.
A4	25398

MASTER TRACING 25398 1 OF 4



NOTES :

1. FOR TIE BARS ETC. SEE I.S. 1130 PARA 2.9.0
2. FOR TRUNKING & EQUIPMENT SEE DRG.
3. FOR EQUIPMENT OF B UNIT SEE DRG.



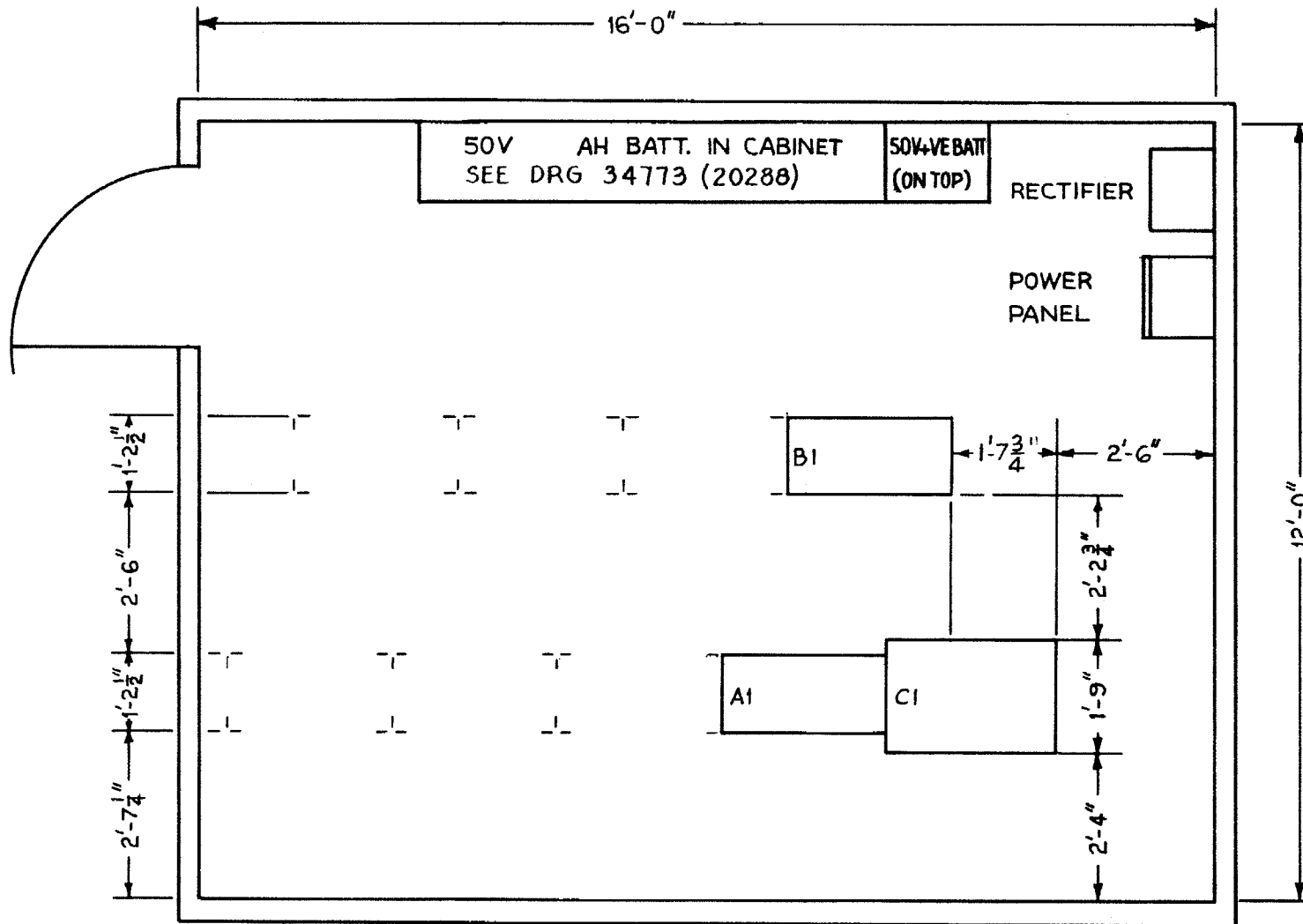
FLOOR PLAN

UAX

DEL	CKD	APD	ORDER	DATE	ISS	CHANGE

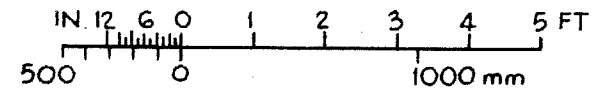
N.Z.P.O. ENGINEER-IN-CHIEF WELLINGTON	
COY. N ^o :	ORIGIN: T-EQPT
	DRAWN: T-EQPT TRACED:
A4	25398

MASTER TRACING 25398 2 OF 4



NOTES:

- 1 FOR TIE BARS ETC. SEE I.S. 1130 PARA 2.9.0
- 2 FOR TRUNKING & EQUIPMENT SEE DRG.
- 3 FOR EQUIPMENT OF 'B' UNIT SEE DRG.



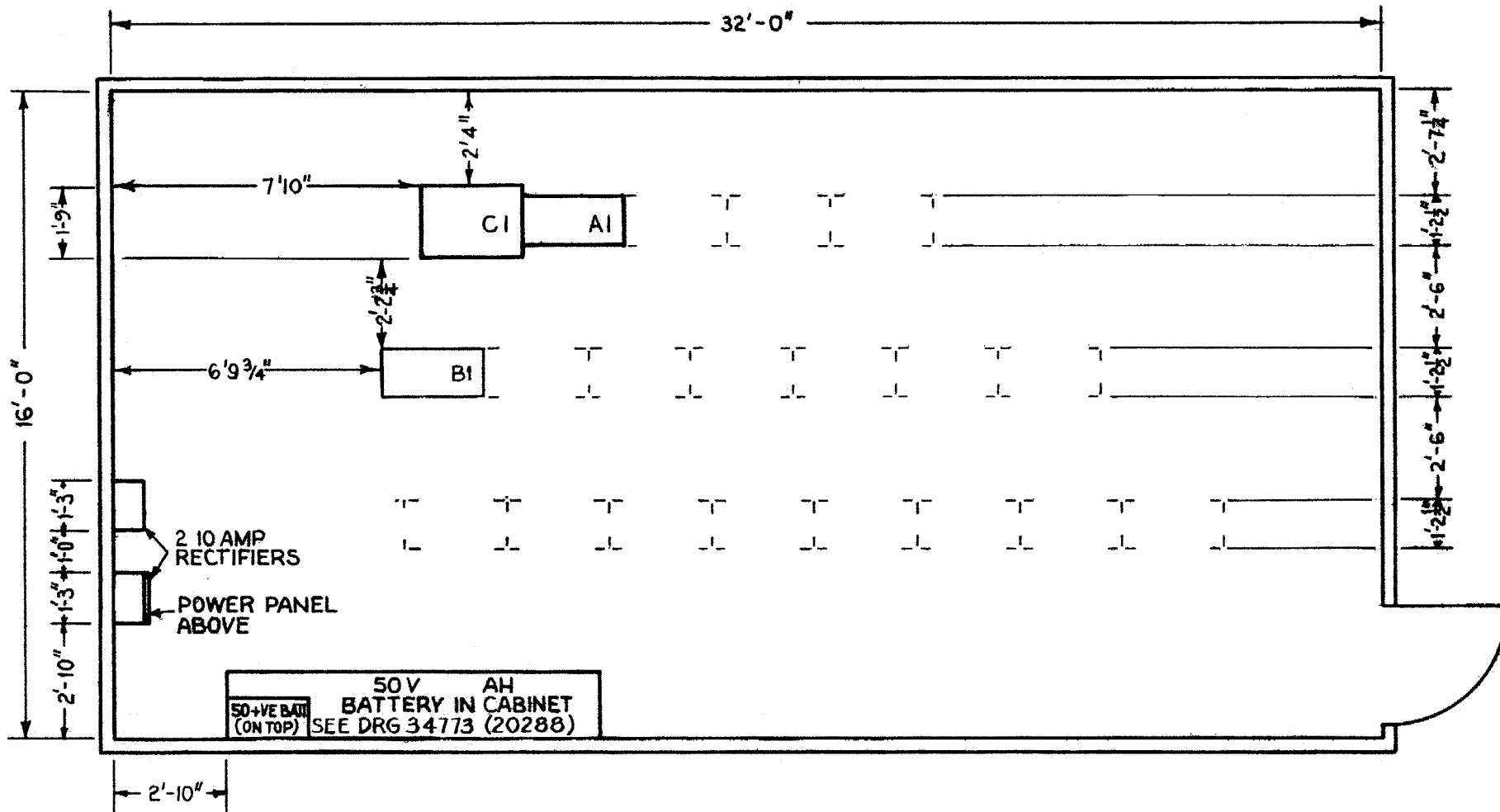
SCALE: $\frac{3}{8}'' = 1'-0''$

FLOOR PLAN

UAX

DEL	CKD	APD	ORDER	DATE	ISS	CHANGE

N Z P O	
ENGINEER-IN-CHIEF WELLINGTON	
COY. N ^o	ORIGIN: T-EQPT
	DRAWN: T-EQPT TRACED: G.W.S.
A 4	25398



NOTES :

- 1 FOR TIE BARS ETC SEE I.S. 1130 PARA. 2.9.0.
- 2 FOR TRUNKING & EQUIPMENT SEE DRG.
- 3 FOR EQUIPMENT OF 'B' UNIT SEE DRG.



SCALE : 1/4" = 1'-0"

FLOOR PLAN

UAX

DEL	CKD	APD	ORDER	DATE	ISS	CHANGE

N.Z.R.O ENGINEER-IN-CHIEF WELLINGTON	
COY. N ^o	ORIGIN : T-EQPT
DRAWN: T-EQPT TRACED:	
A 4	25398

MASTER TRACING 25398 40F 4