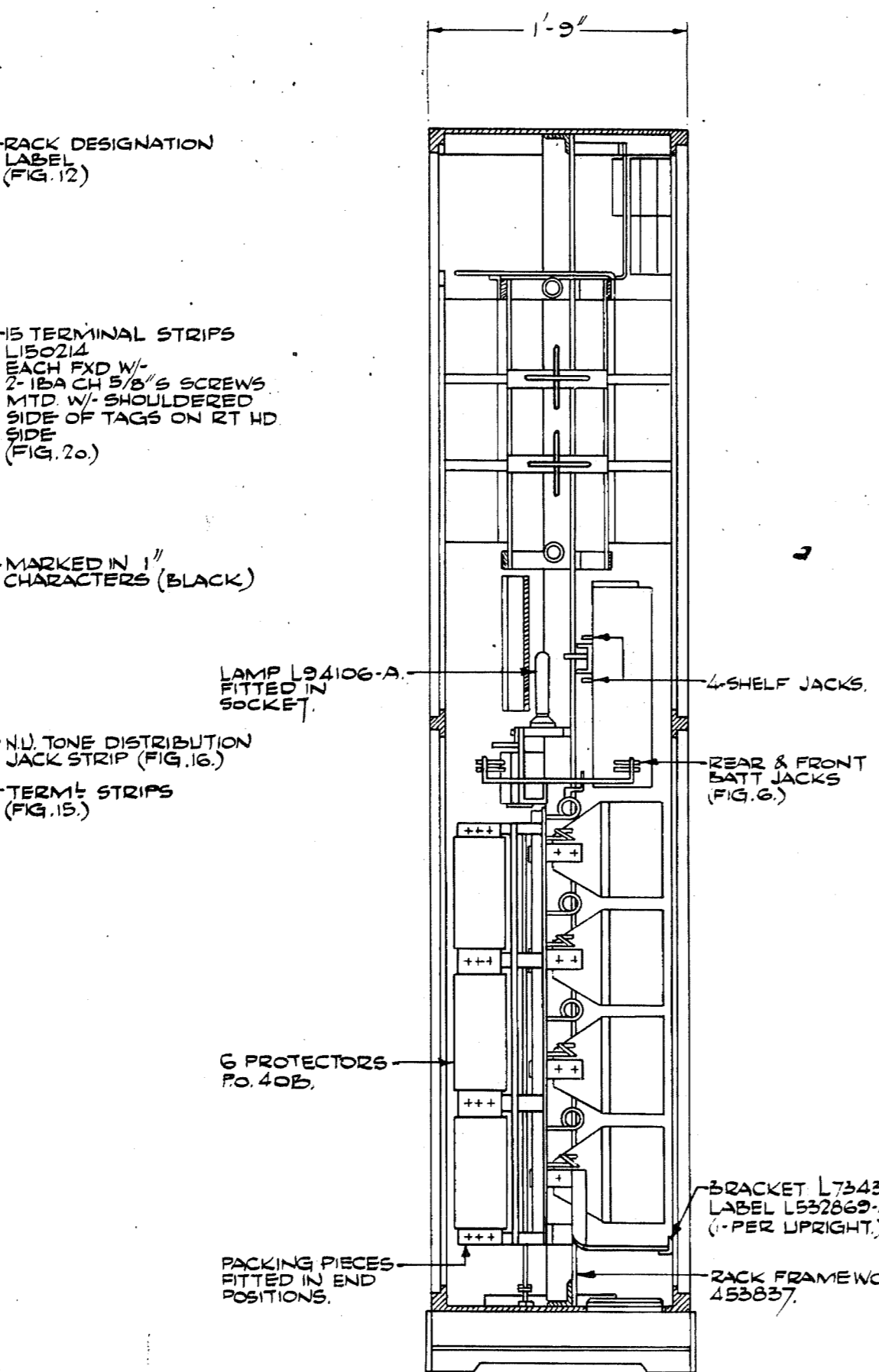
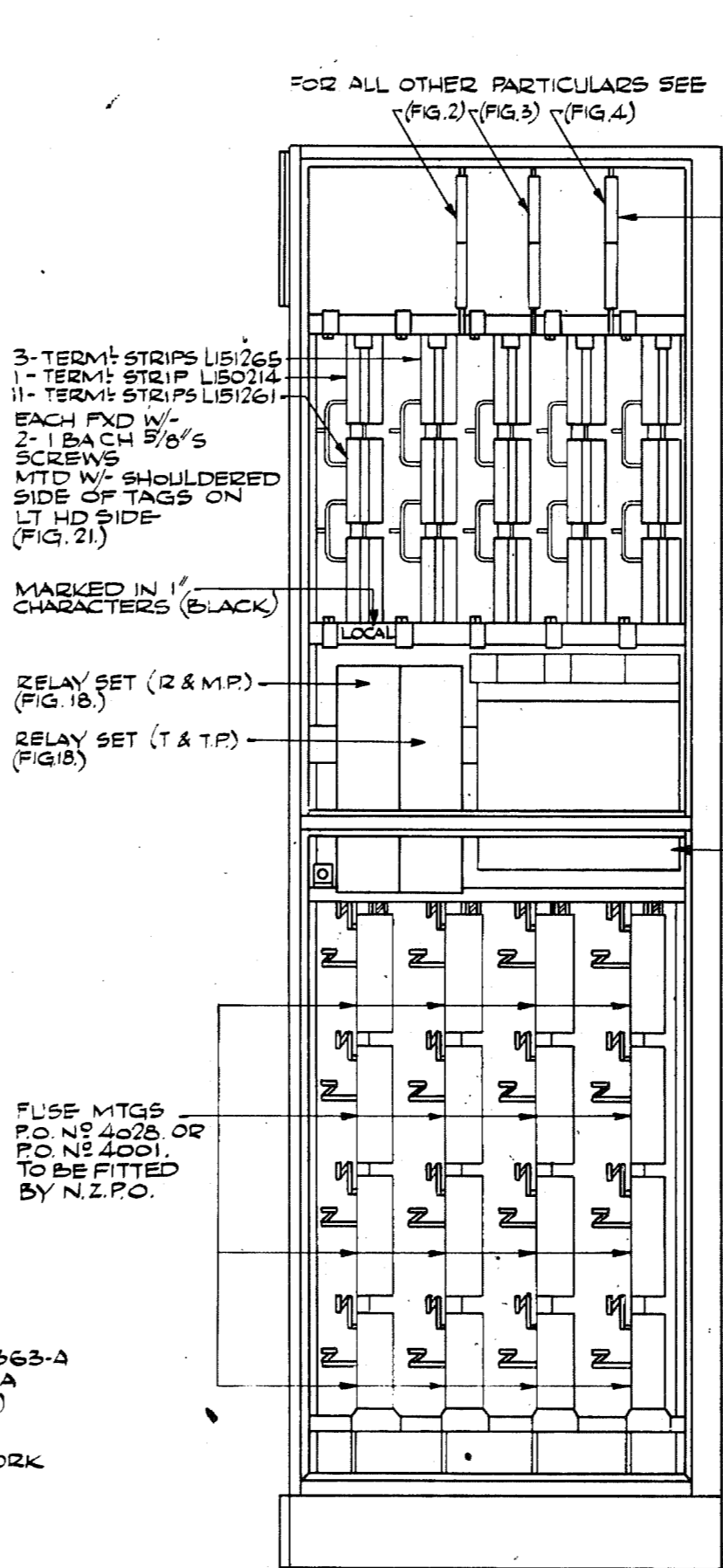


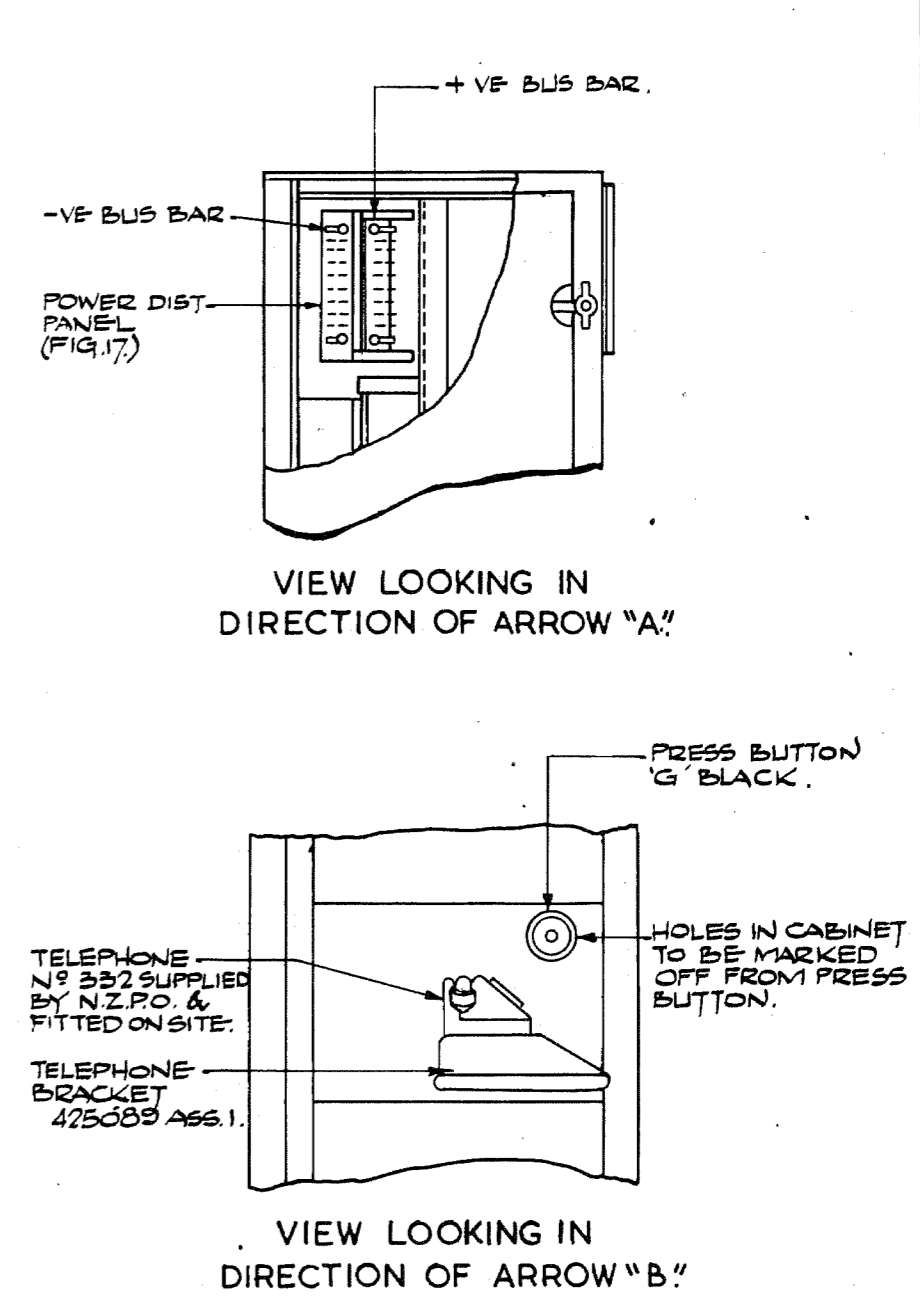
"A"
FRONT VIEW.
WITH DOORS REMOVED.



SECTION "A-A"



REAR VIEW.
WITH DOORS REMOVED.



NOTE:-
1-1. G-PROTECTORS FOR LINES 800-899 & JUNCS. 1-20 TO BE FITTED BY SHOPS. FOR IRON FRAMEWORK SEE DRG. 453837. FOR CABINET ASSEMBLY SEE DRG. 433833.

MATERIAL SUPPLIED BY N.Z.P.O.
PROTECTORS (ADDITIONAL) PO. NO 40B.
M.D.F. FUSE MTGS. PO. 4001, OR 4028.
1- TELEPHONE & BELL SET.
1- DIAL SPEED TESTER PO. NO 43.
1- DETECTOR PO. NO 4.
1- PRESS BUTTON.
1- TELEPHONE MTG. BRACKET.

TYPICAL EQUIPMENT
COMBINED
M.D.F. I.D.F. & MISC. EQUIPT.
RACK 'C' MARK 4.
UNIT AUTO. N.Z. 13.

DRAWN HB	ENGRS	APPROVED	DRFT. ENGR	BT 1/4/65
TRACED 10/2/65				
CHECKED				

495887 SHI-B. AUTOMATIC TELEPHONE & ELECT. CO. LTD. LIVERPOOL J

1.	8.4.65.	HP
2.	P.O. 2/808935 RINGER PANEL DELETED IN FIG. 9.	DOB AC
	24.7.68.	HC
REF. FRAMEWORK ASS. 453837. G.E.C. DRAWING. 577967. SH. 1.		
FU. NO. 2/808350.		

GROUP I. FIG. I.

ISSUE	APP
1. 8-4-65.	H/LG
2. C.O.5159. NOTE 2.1. WAS NOT SHOWN	J.H. B.M.
27. 4. 66	APM

FIGS 2 3 & 4 -
THESE DESIGNATIONS
TO BE SUITABLY POSITIONED
NEAR RELATIVE TERMS.

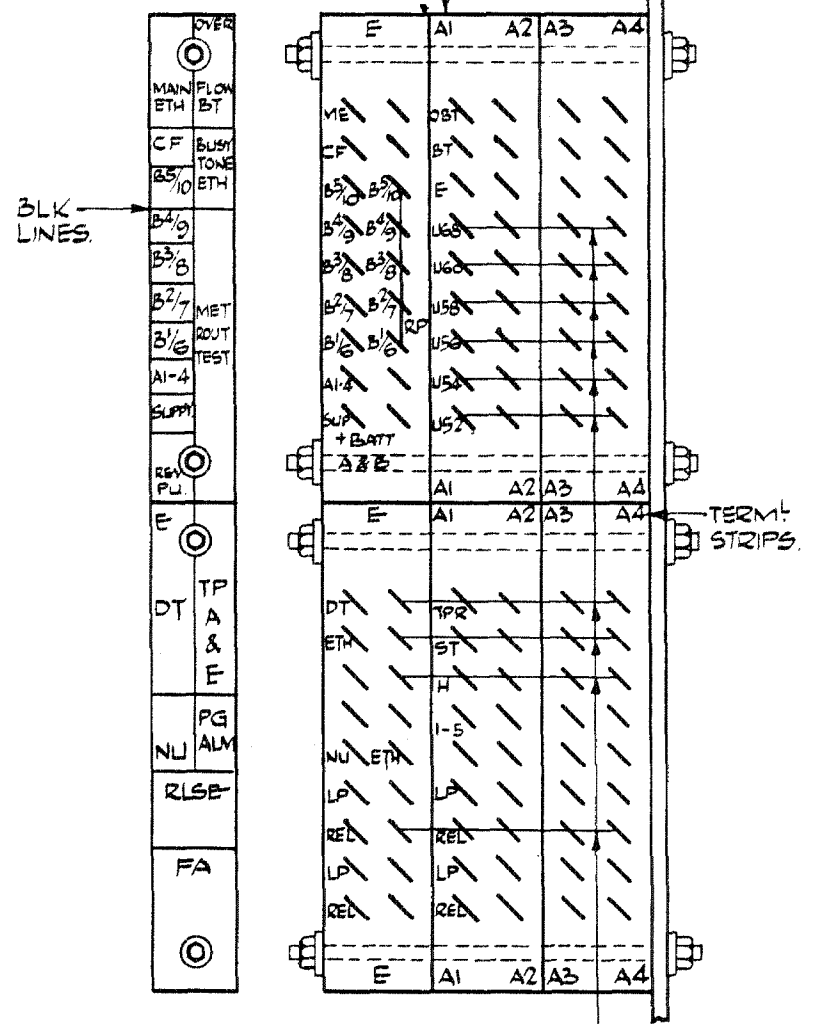


FIG. 2.

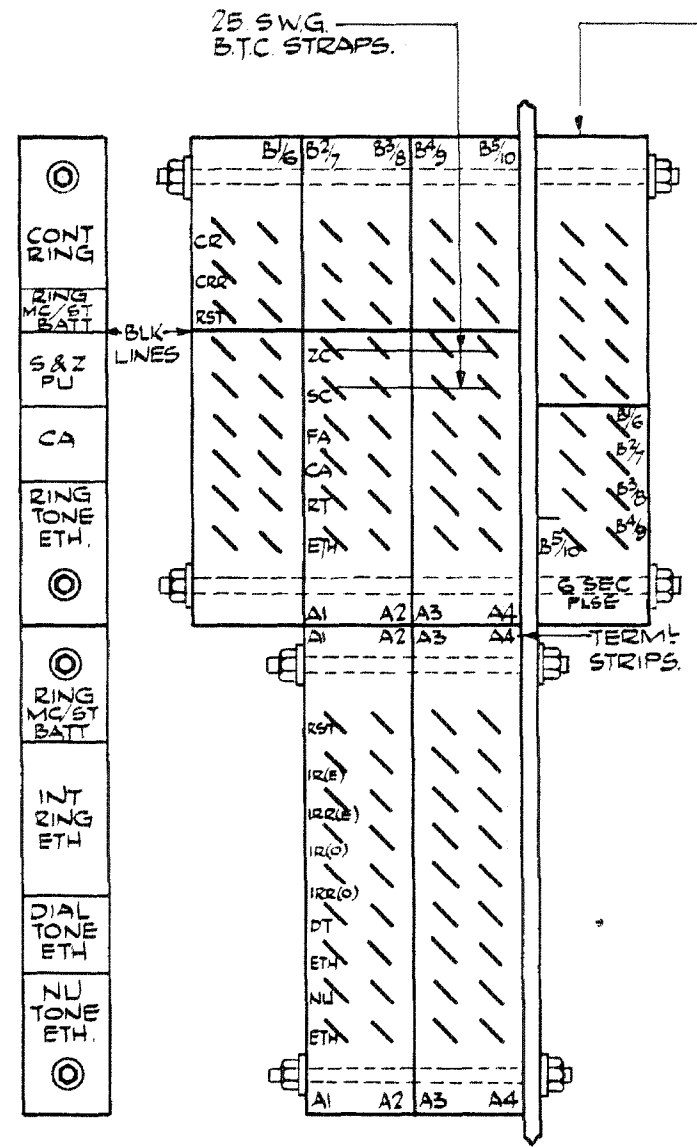


FIG. 3.

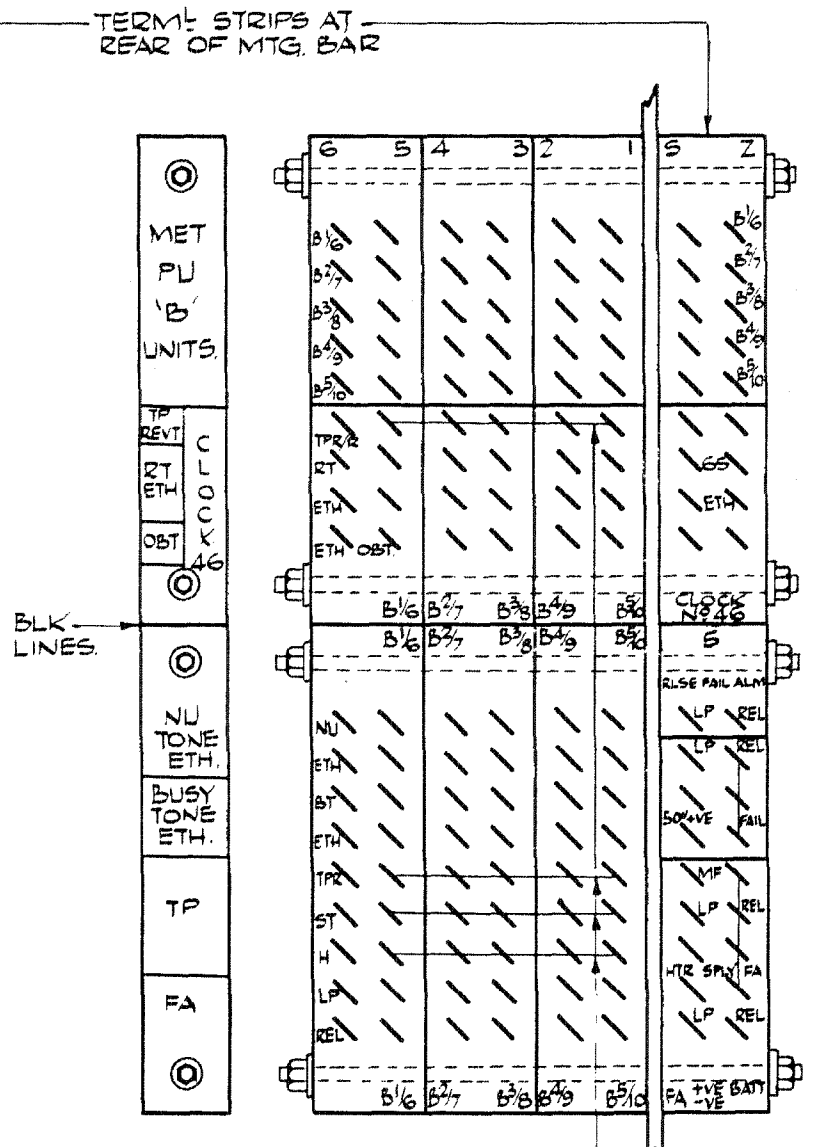
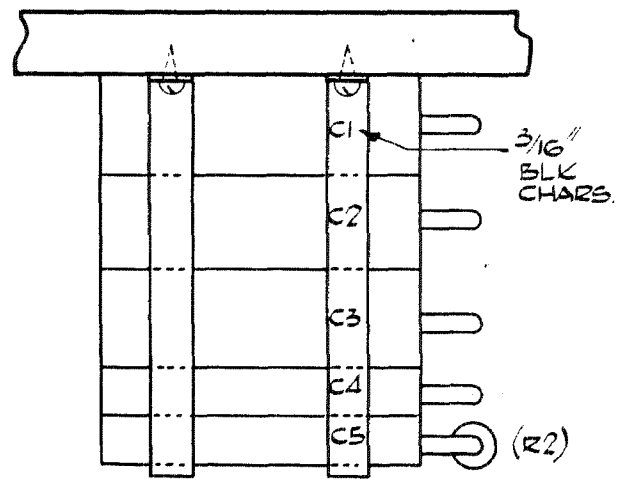


FIG. 4.
(SEE NOTE 2.1.)



CODES OF CAPACITORS
C1-C2-C3 - LG8337-2MF.
C4-C5 - LG8068-1MF.
(R2) - L28352.

FIG. 5.
REAR PLAN VIEW

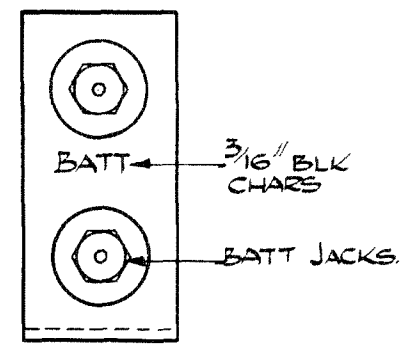


FIG. 6.

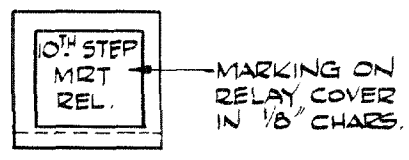


FIG. 7.

NOTE 2.1. FIXING HOLES IN
TERMINAL STRIPS TO BE OPENED
OUT TO 1/64" BY SHOP.

TYPICAL EQUIPMENT
COMBINED
M.D.F. I.D.F. & MISC. EQUIPT
RACK 'C' MARK 4.
UNIT AUTO N.Z. 13.

DRAWN H.B.	ENGINERS	APPROVED	DRT/ENG
TRACED 5/2/65	J.H.	H/LG	J.H. 1/4/65
CHECKED R			

ISSUE	APP
1. 8-4-65.	HG/10
2. C.O.7607 FIG. B, DIAL TEST KEY FRAMEWORK WAS SHOWN IN UPPER POSITION	C.W. C. 10/5
23. 6. 66	APM

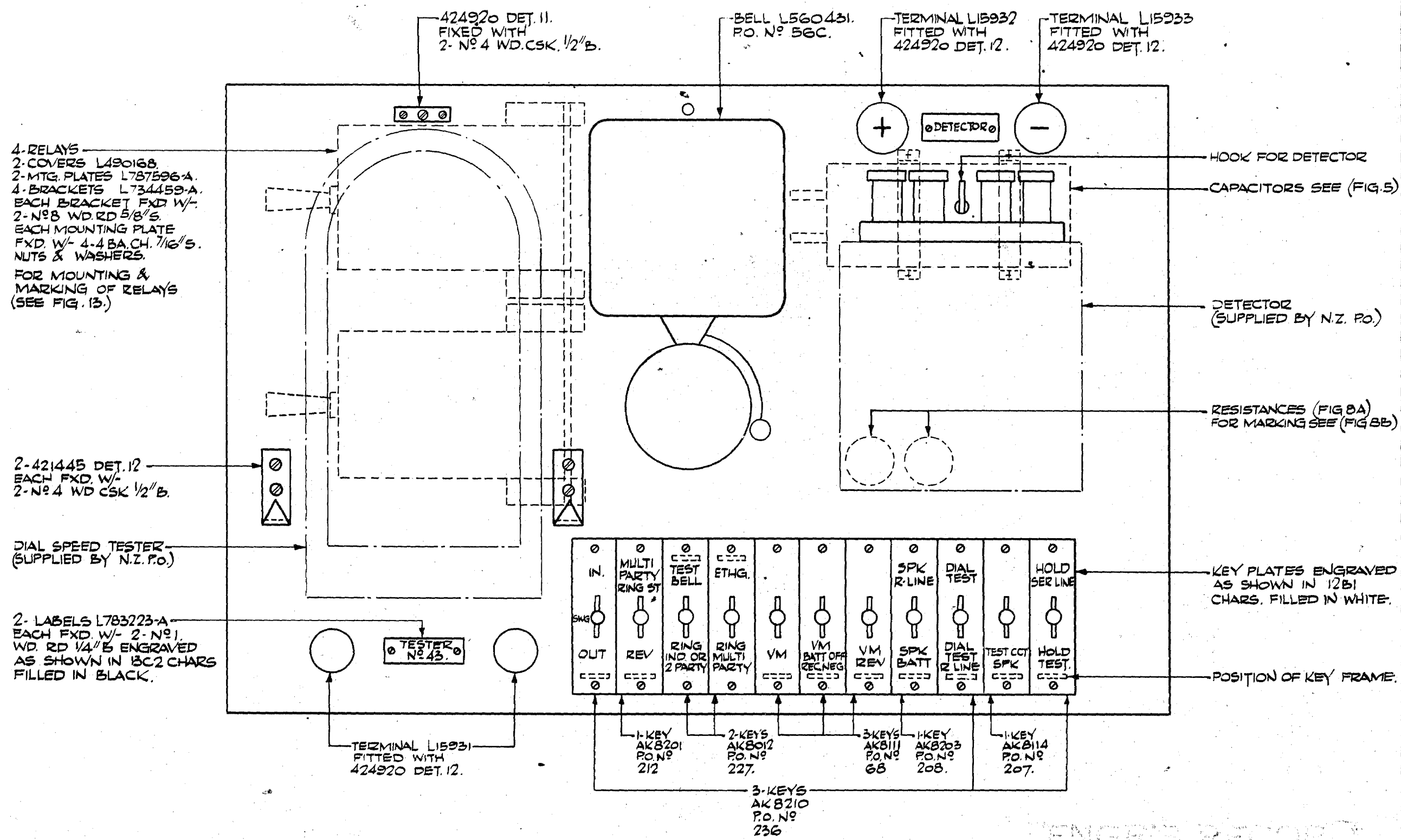


FIG. 8.
FRONT VIEW

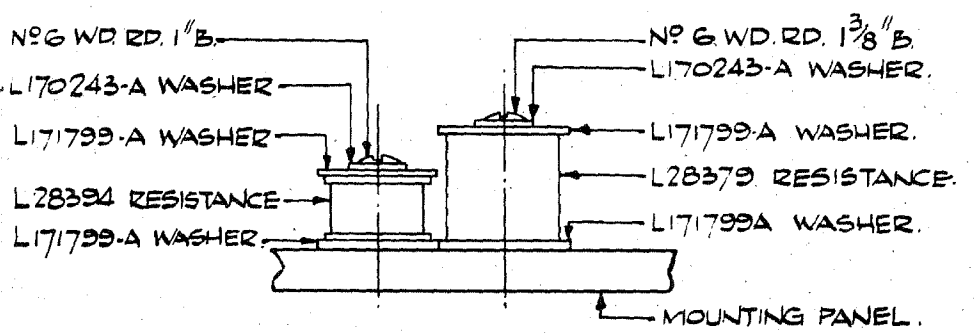


FIG. 8A.

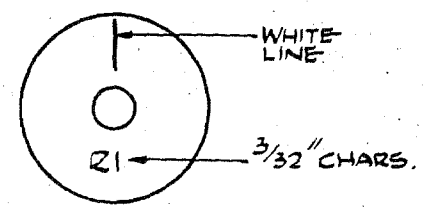


FIG. 8B.
TYPICAL

ENGINEER'S RECORD
10 SEP 1965

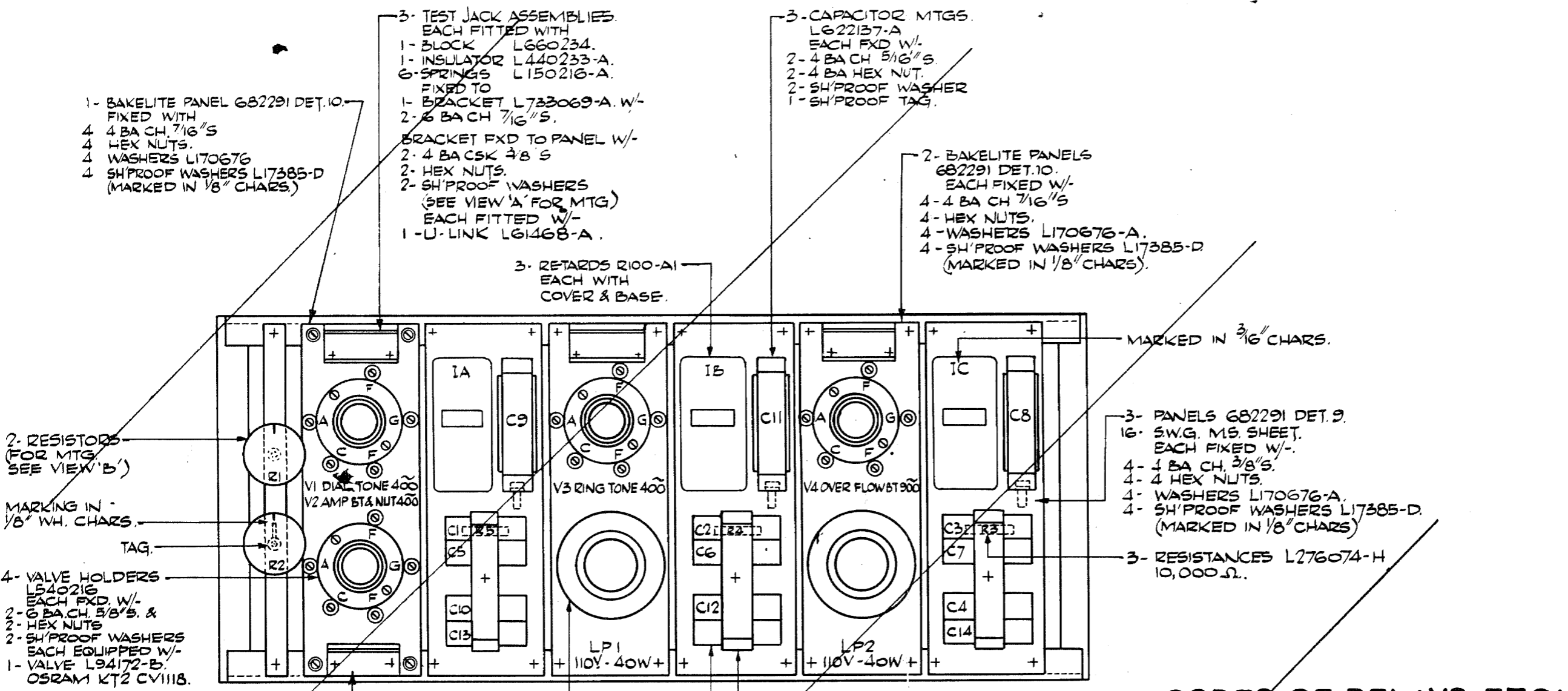
REF - G.E.C. DRAWING
577967 SH. 3.
FIG. B - 2/808350

**TYPICAL EQUIPMENT
COMBINED
M.D.F. I.D.F. & MISC. EQUIPT.
RACK 'C' MARK 4
UNIT AUTO. N.Z. 13.**

DRAWN 4b	ENGINEER	APPROVED	DRFT. ENG.
TRACED 28/1/65			
CHECKED 2			

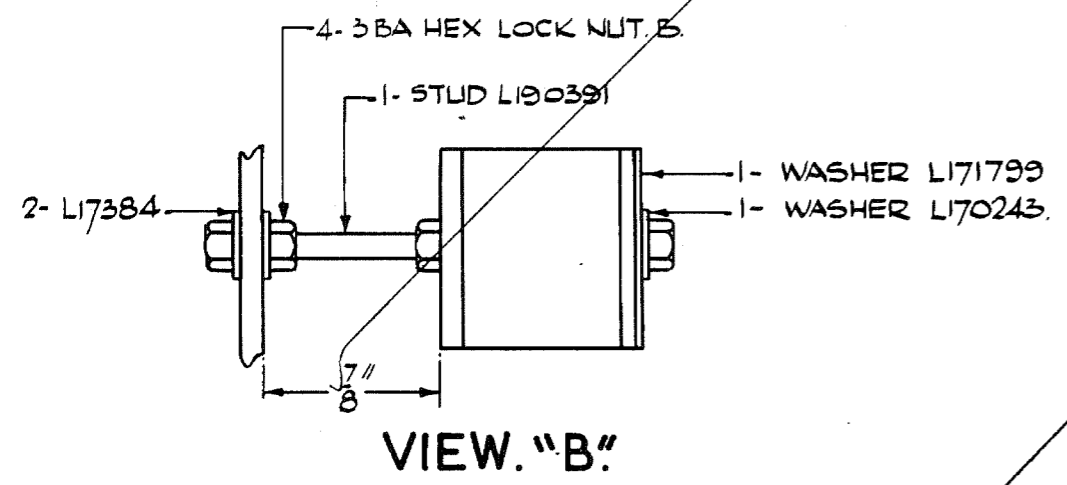
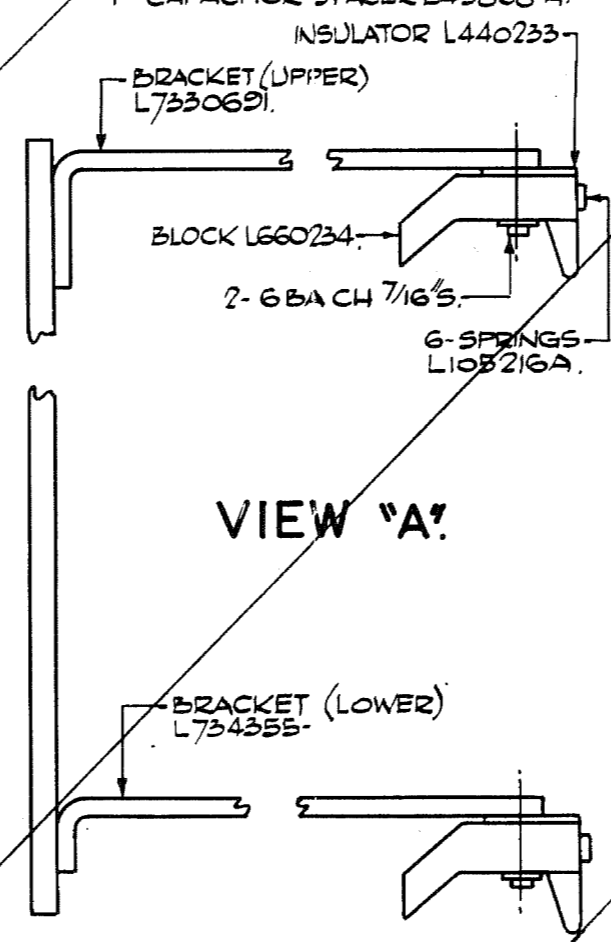
495887 SH. 3. AUTOMATIC TELEPHONE & ELECTRIC LIVERPOOL **G**

1.	8. 4. 65.	HG
2.	FO. 2/80835 GROUP 118 ASSOCIATED VIEWS DELETED, LAST USED N.Z.P.O. SUPPLY N°3	HG
	24. 7. 68.	HG



CODES OF RELAYS E.T.C.:-

- RELAYS:-**
IA } R100-A1.
IB }
IC }
- RESISTORS:-**
R1 } L285159.
R2 }
R3 }
R4 } L276074-H.
R5 }
- CAPACITORS:-**
C1 } L680737.
C2 } L68391.
C3 } L68339.
C4 } L68350.
C5 } L68414.
C6 }
C7 } L68336.
C8 } L68391.
C9 }
C10 }
C11 }
C12 }
C13 }
C14 }



GROUP. II.

NOTE.
4-1. FOR IRON FRAMEWORK SEE 682291.
FOR EQUIPMENT AS FITTED ON UNIT SEE 682296.

ENGINEERING RECORD

TYPICAL EQUIPMENT.
COMBINED
M.D.F. I.D.F. & MISC. EQUIPT.
RACK 'C' MARK 4
UNIT AUTO. N.Z. 13.

DRAWN HB.	ENGINEERS	APPROVED	DRFT/ENG	5X 1/4/65
TRACED 27/1/65.				HG
CHECKED R				

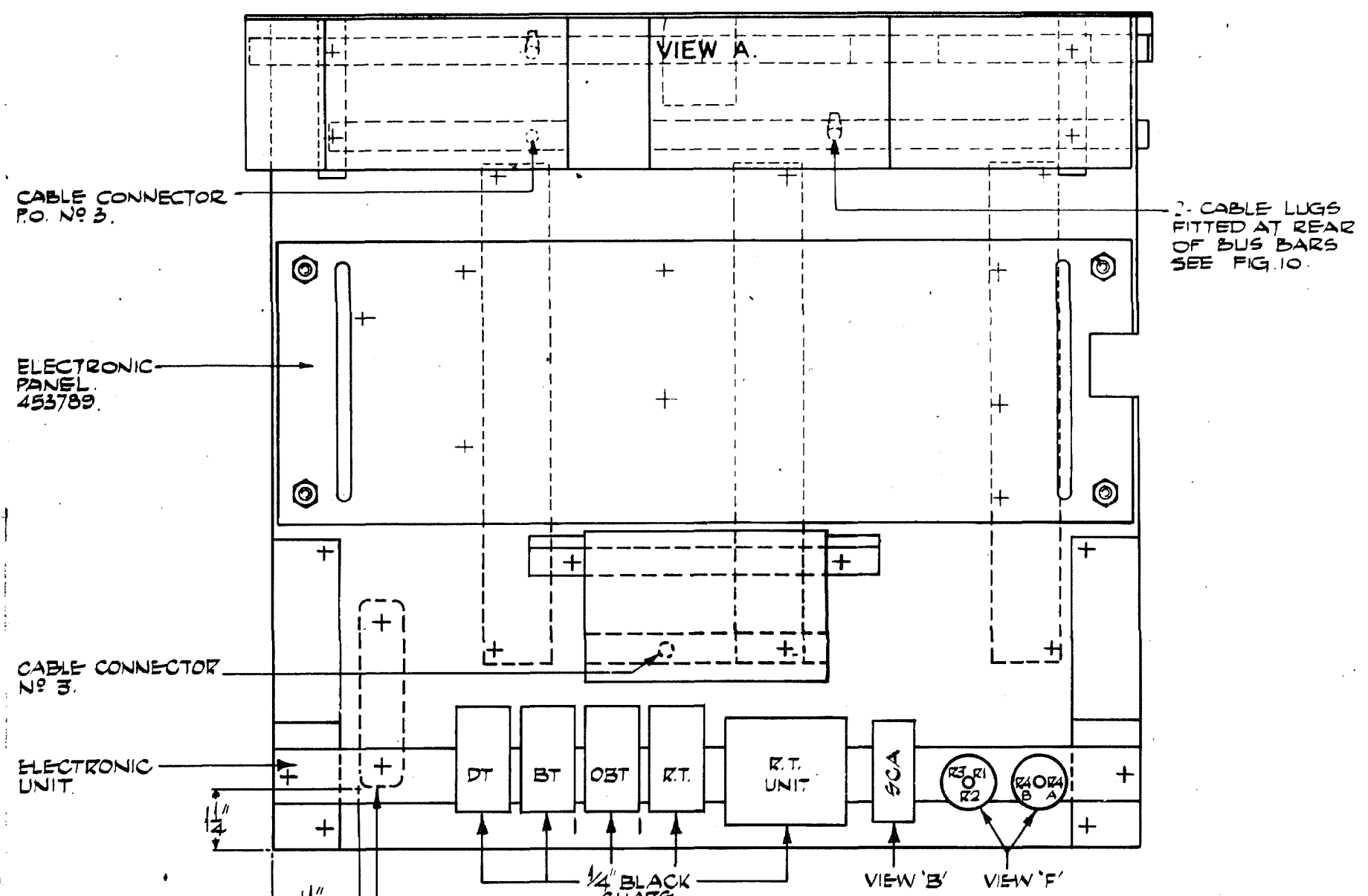
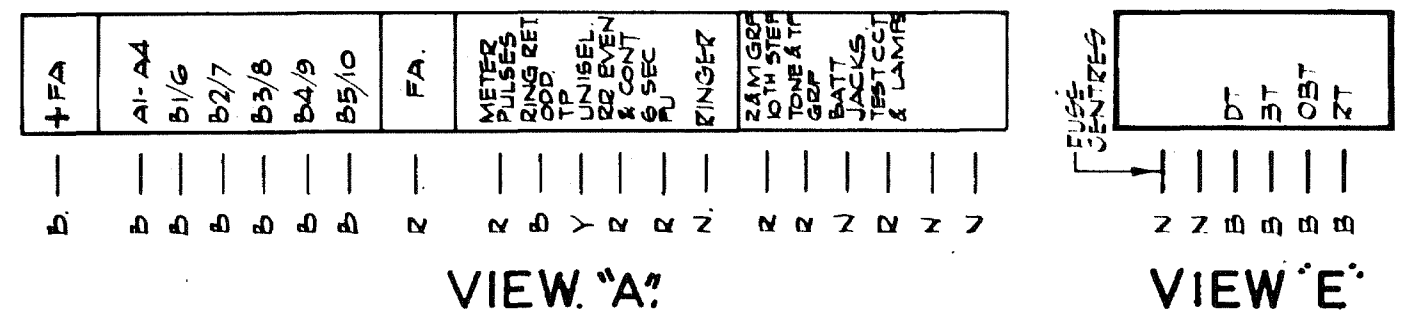


FIG. 9.

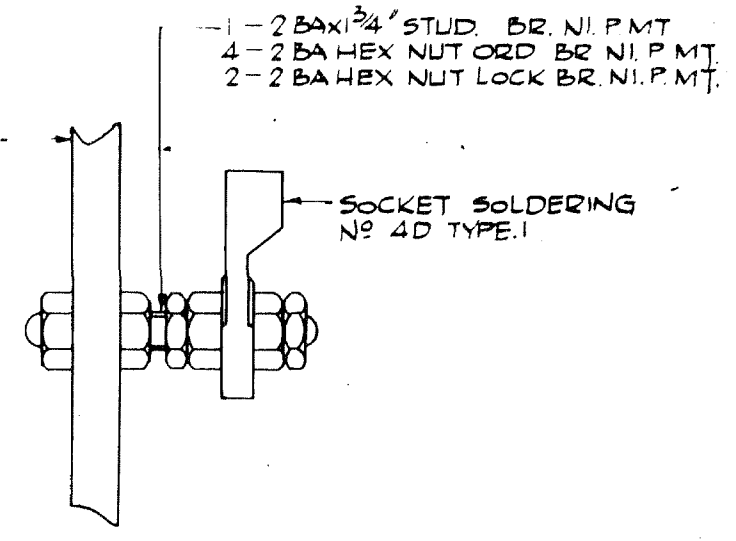
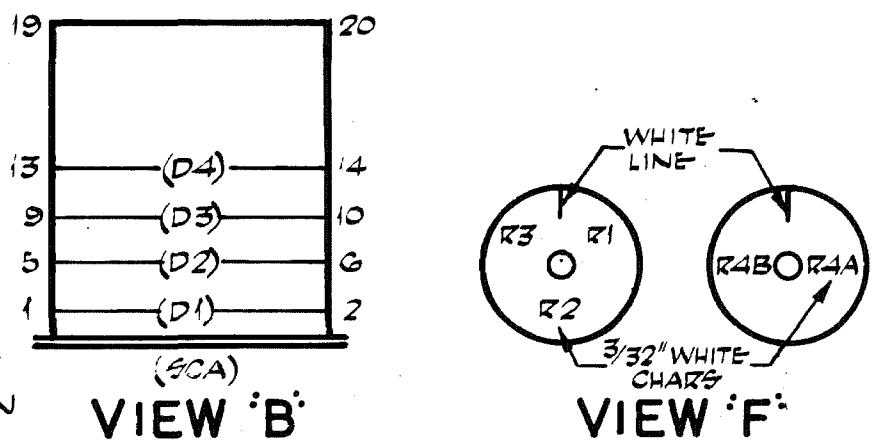
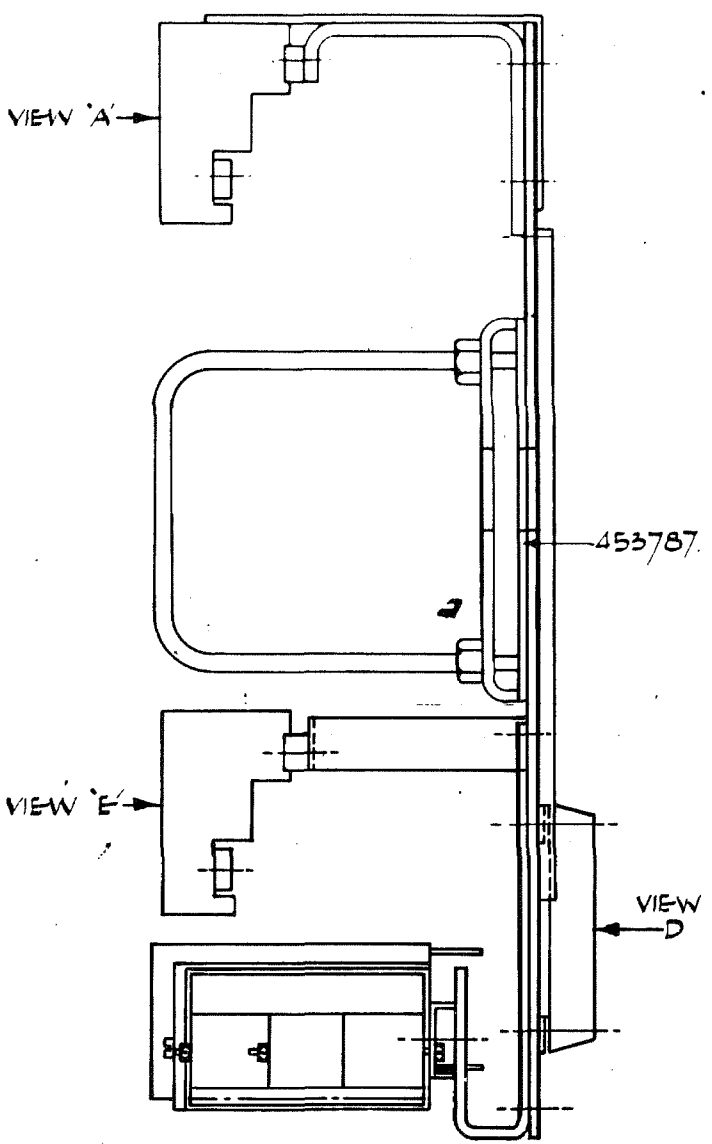
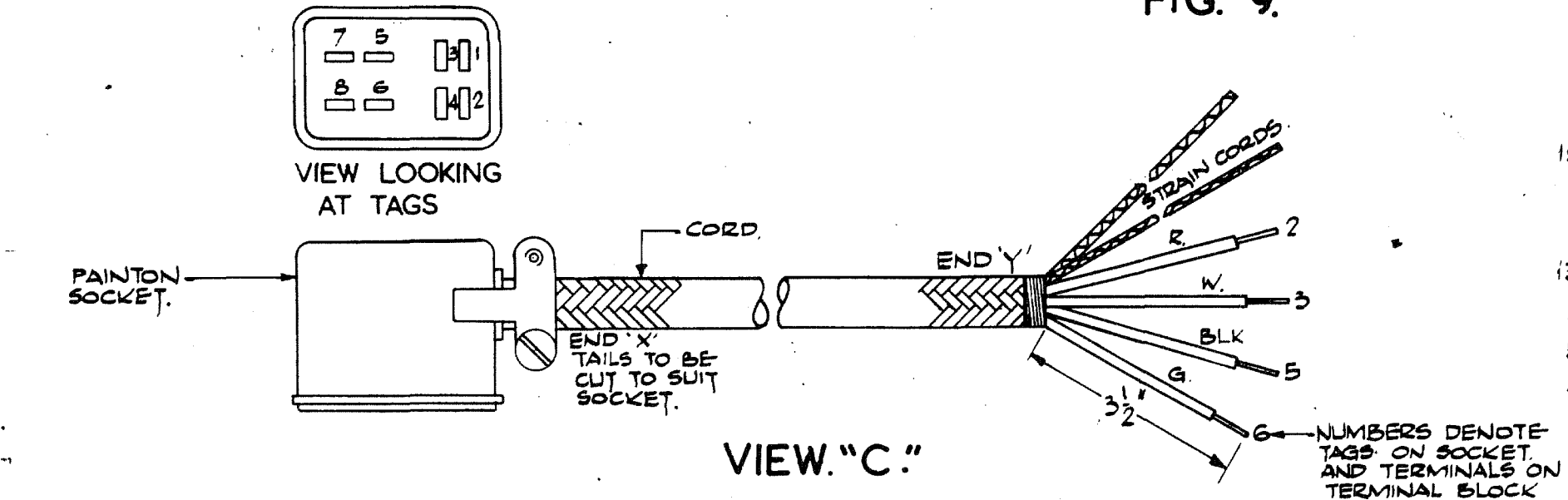


FIG. 10.

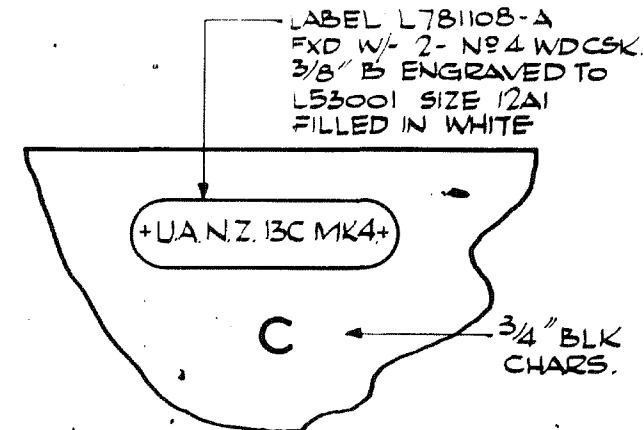


FIG. 12.

VIEW 'D'

NOTES:-
 1.5 MARKING:- BLACK & BROWN SURFACES TO BE MARKED IN WHITE. ALL CHARACTERS TO BE 1/8" EXCEPT WHERE OTHERWISE STATED.
 2.5 IN FIG. 9 VIEWS 'A' & VIEW 'E' POSITIONS TO BE MARKED AS SHOWN IN TABLE BELOW.

SYMBOL	FUSE AMPS.	COLOR OF FILLING.
B	.5	BLUE
Y	1.0	YELLOW
R	1.5	RED
N	3.0 & SPARE	NONE

3.5 HOLES FOR TERMINAL BLOCK TO BE MARKED OFF & DRILLED FROM TERMINAL BLOCK.

A4	NU	CF
A1	A2	A3
CA	CA	CA
C	B5/10	PG
A4	B4/9	A4
A3	B3/8	A3
A2	B2/7	A2
A1	B1/6	A1
FA	FA	RLSE
E	HOLD E	FA GUARD
FA	FE	FAIL
HTR	AC	+VE
	FAIL	FAIL

FIG. 11.

1/8" WHITE CHARACTERS (NOT TO BE ENGRD)

ISSUE: 8-4-65
 APP: HCL
 1. CO 5689. POSN OF TERMINAL PLATE & BLOCK ALTERED. NOTE: TERMINAL BLOCK PLATE TO BE MARKED OFF & DRILLED FROM TERMINAL BLOCK WAS NOT SHOWN.
 2. 6-4-66 APP: JBN
 3. FO. 2/80835 VIEWS B, D, E & F8 NOTE 3.5 ADDED. FIG 9 & NOTE 2.5, & VIEW A AMENDED.
 24-7-68. HC

REF:- G.E.Z. DRAWING. 571967.SH.5.
 PU. NO. - 2/808350.

TYPICAL EQUIPMENT COMBINED. M.D.F. I.D.F. & MISC. EQUIPT. RACK 'C' MARK 4. UNIT AUTO. NZ 13.

DRAWN HB
 TRACED 5/2/65
 CHECKED [Signature]
 495887 SH.5.

APPROVED [Signature] 5/1/66
 APPROVED [Signature] 1/2/66
 AUTOMATIC TELEPHONE & ELECTRIC CO. LTD LIVERPOOL

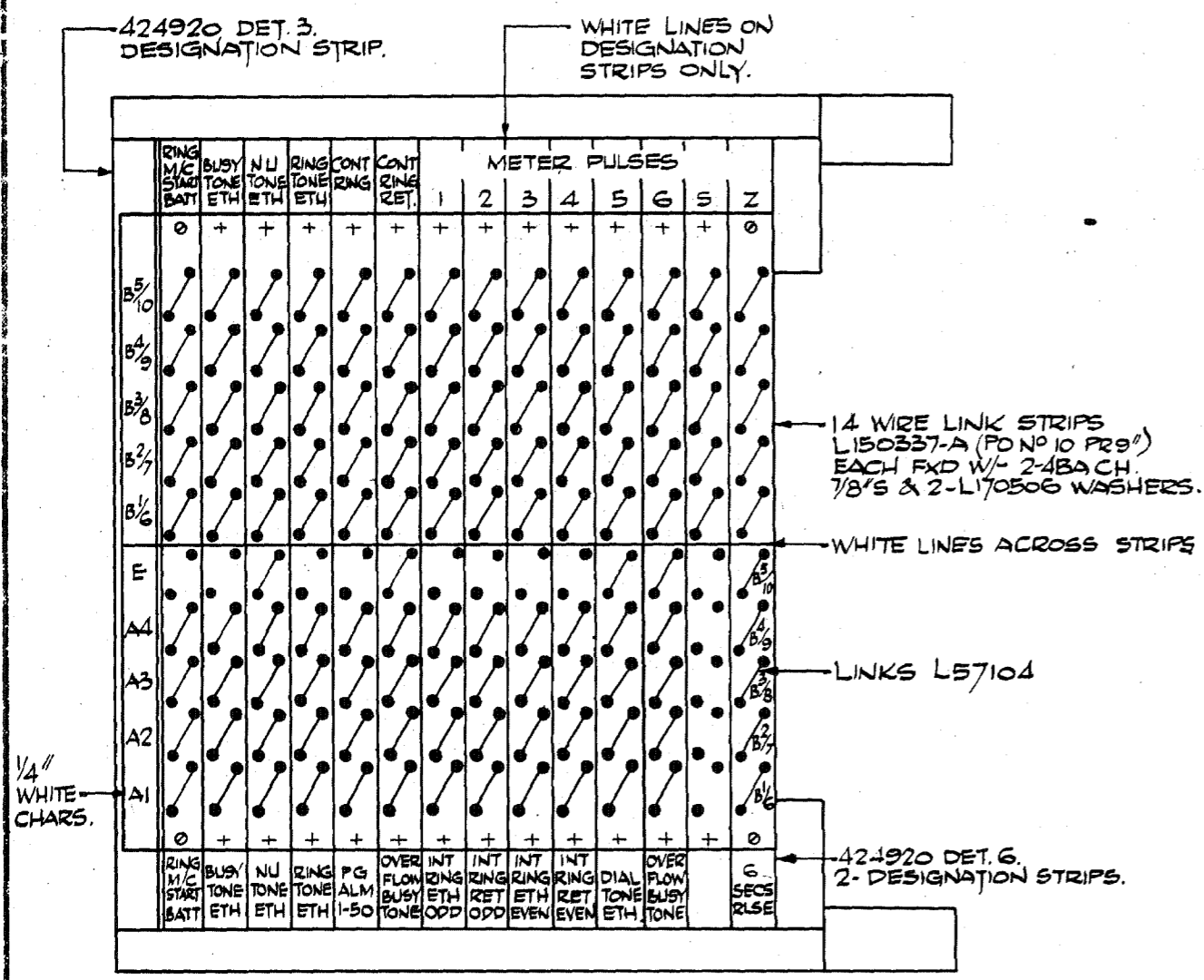


FIG. 14.
(NOTE 5-1.)

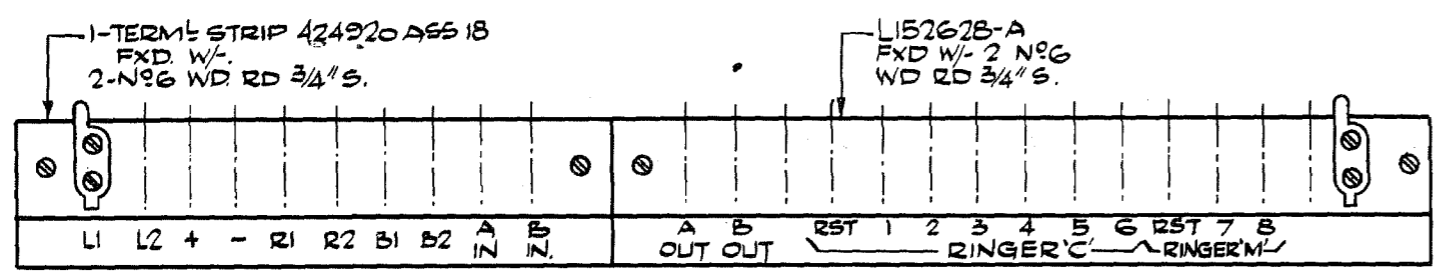


FIG. 15.

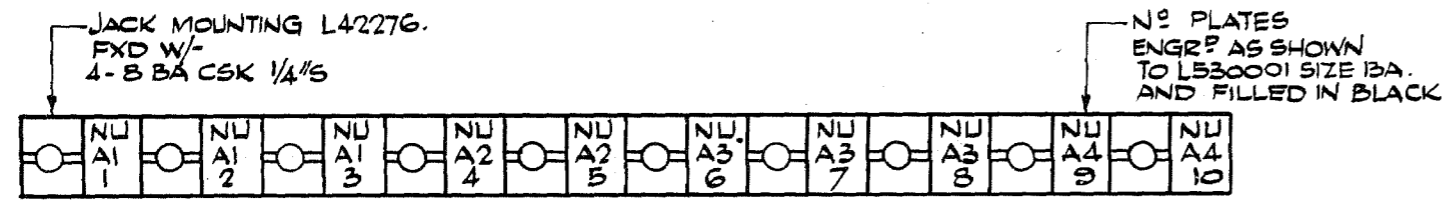


FIG. 16.

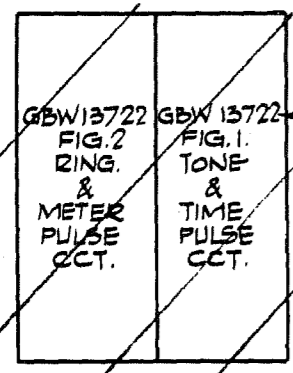


FIG. 18.

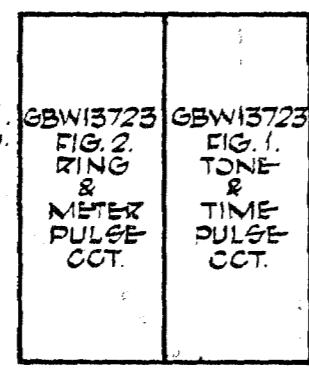
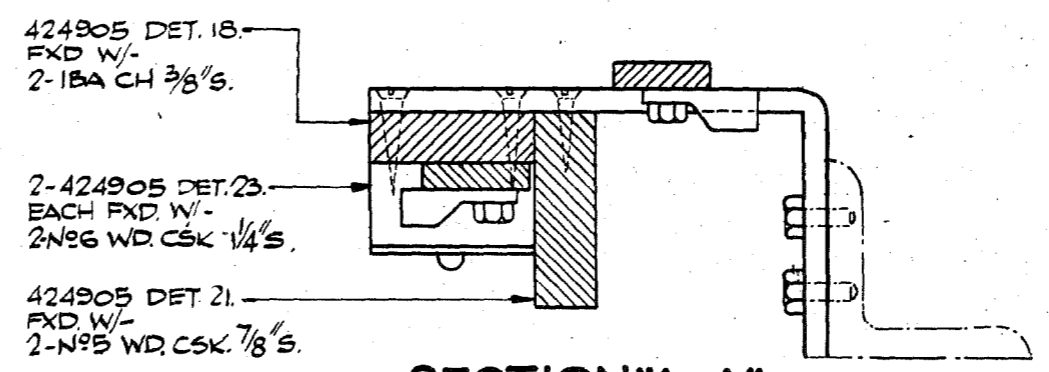


FIG. 18A.

FIG. 19 SPARE



SECTION "A-A"

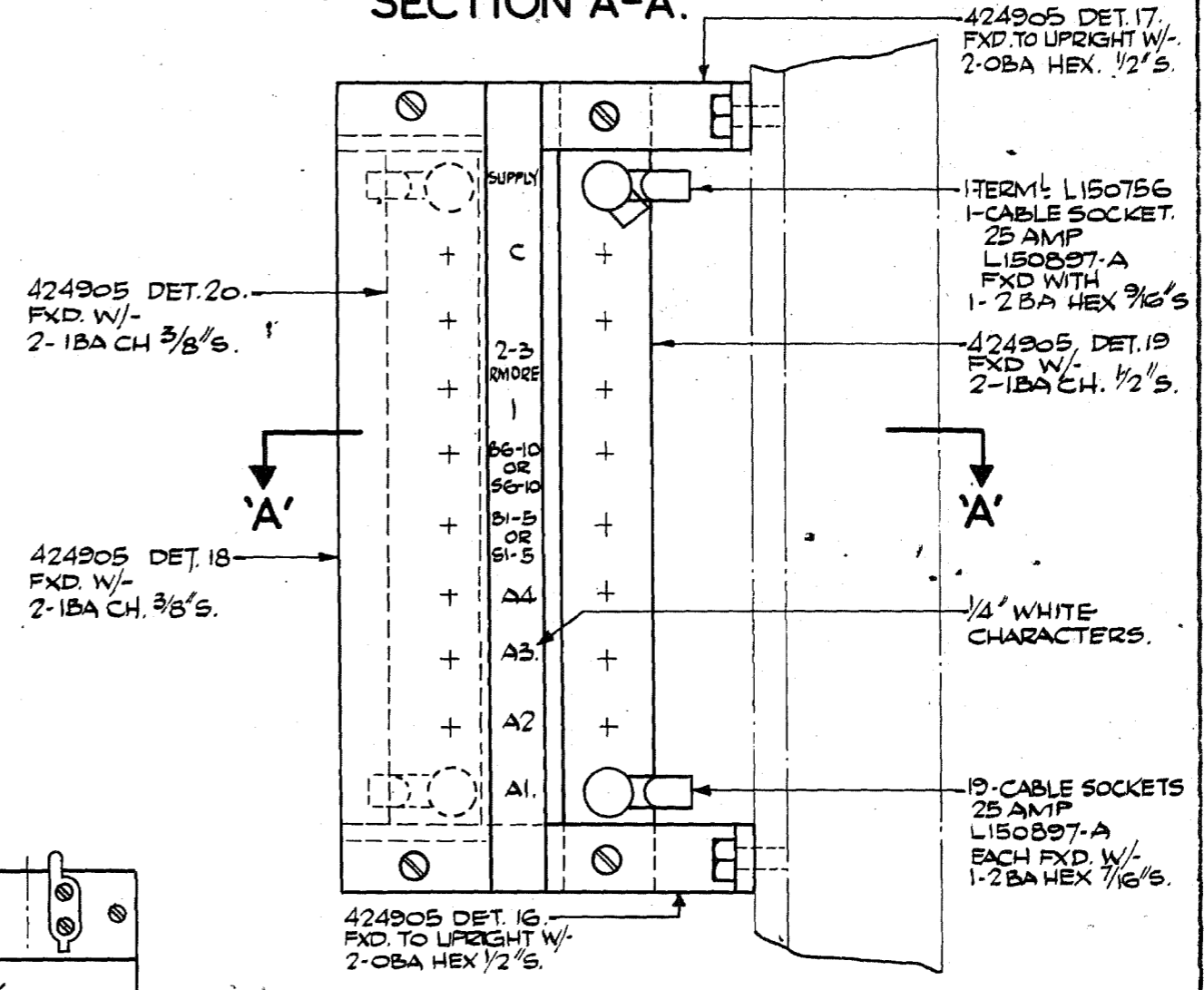


FIG. 17.

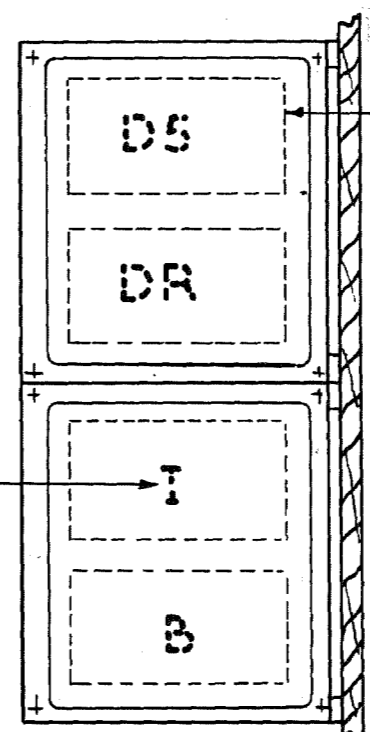


FIG. 13.

- RELAY R303D9-Y (D5)
- RELAY L991725 D8-2 (DR)
- RELAY R100A1 (1)
- RELAY R303D9-Z
- COVER L490150-A
- MOUNTED ON
- MOUNTINGS L787596-A

**TYPICAL EQUIPMENT
COMBINED
M.D.F. I.D.F. & MISC. EQUIPT.
RACK 'C' MARK 4
UNIT AUTO. N.Z. 13.**

DRAWN	H.B.	ENGRS	J.B.	APPROVED	J.B.	DATE	5/14/65
TRACED	38/65	CHECKED	R.	DRY	H.C.		

ISSUE	APP
1 8. 4. 65.	H.C.
2 C.D. 5159 RELAY CODES IN FIG. 13 DELETED	J.B.
3 F.O. 2/808935 FIG. 18 DELETED. FIG. 18A. ADDED.	D.O.B.
24. 7. 68.	H.C.

REF. G.E.C. DRAWING
577967.SH. G.
FIG. NO. 2/808350.



VERTICAL 1.

VERTICAL 2.

VERTICAL 3.

VERTICAL 4.

VERTICAL 5.

POSITIONS DRAWN AS SEEN FROM MULT SIDE.

FIG. 20.

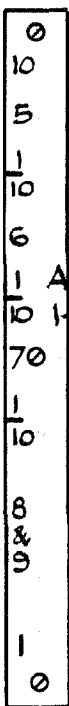
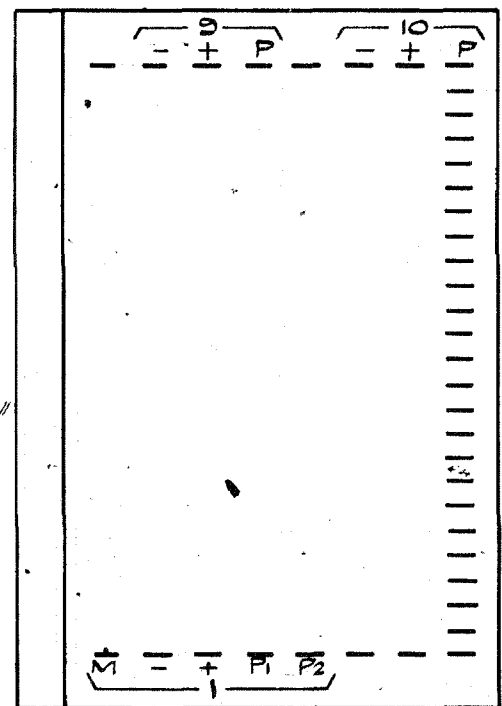
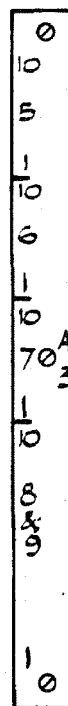
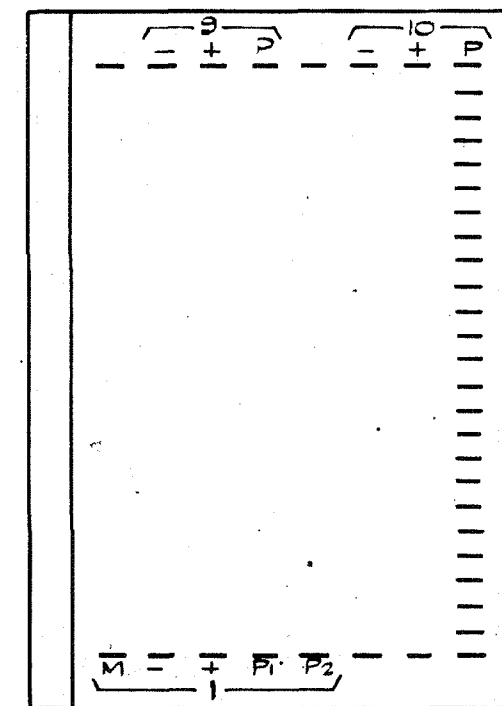
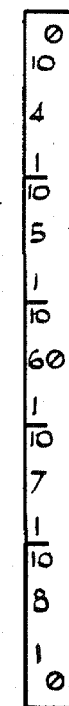
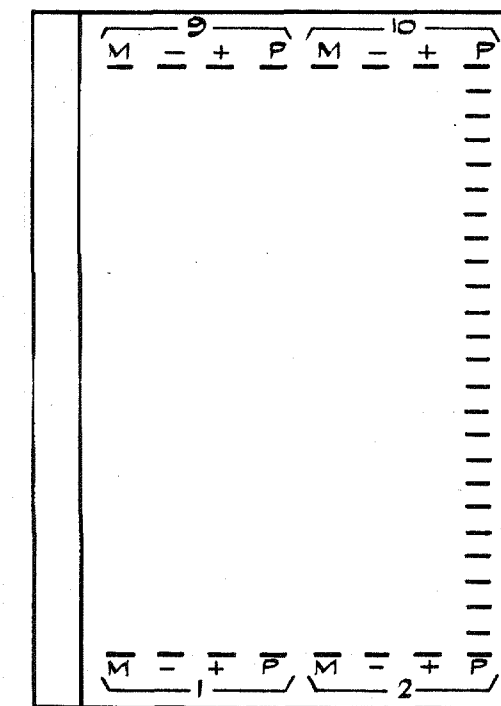
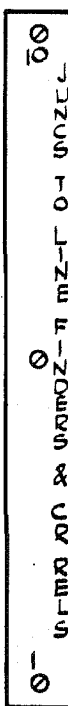
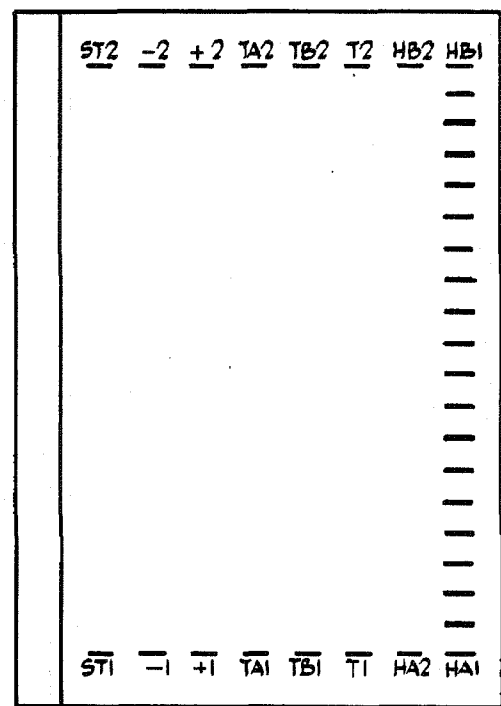
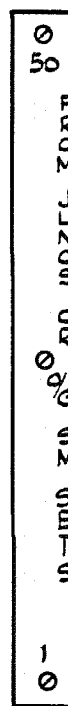
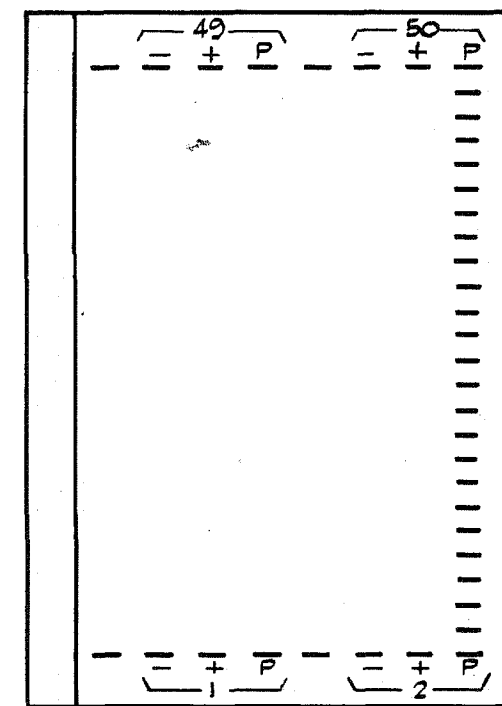
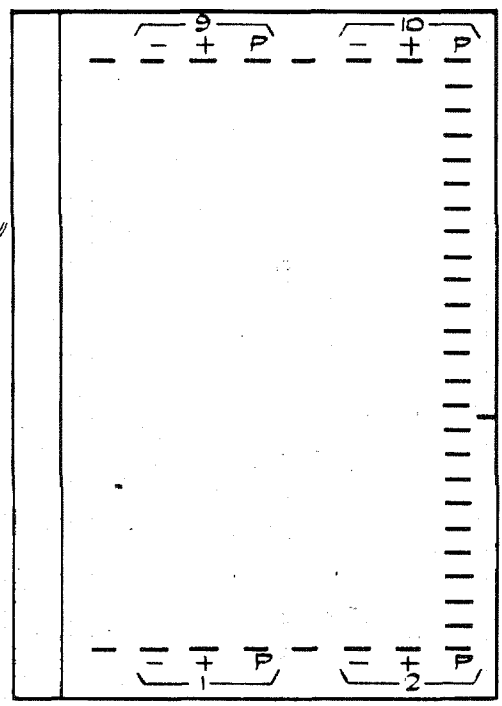
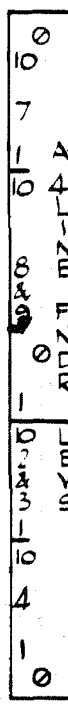
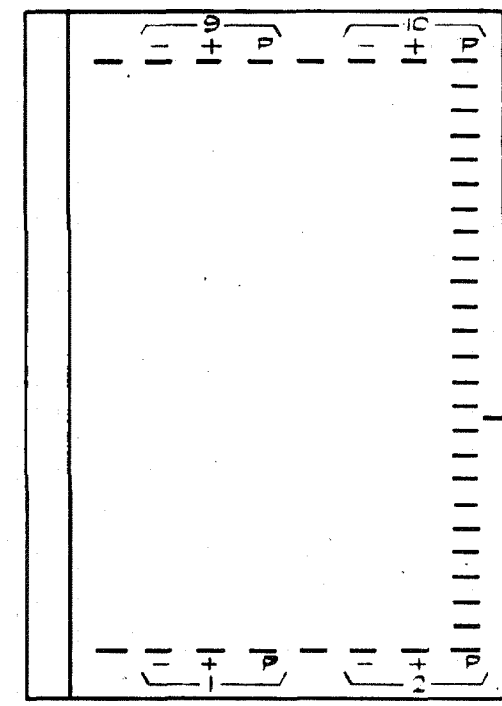
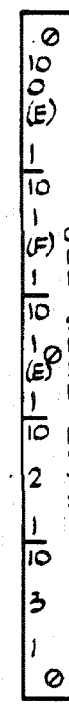
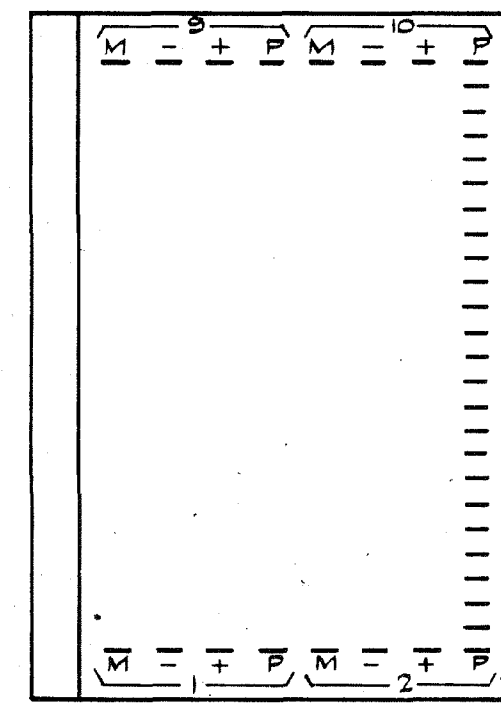
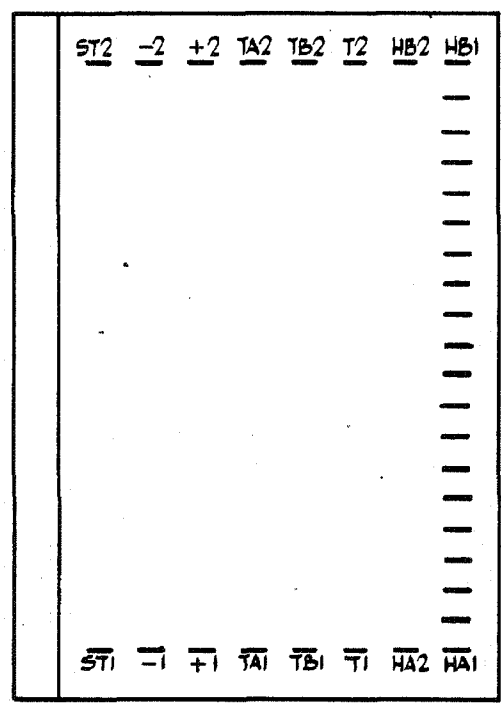
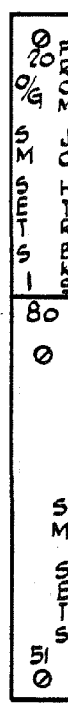
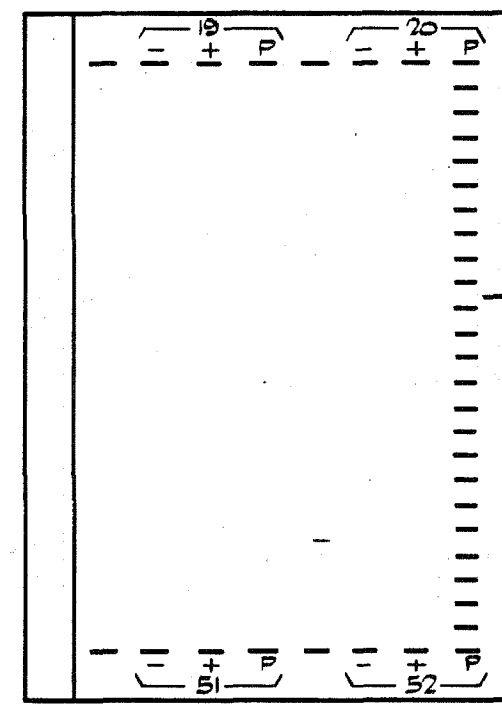
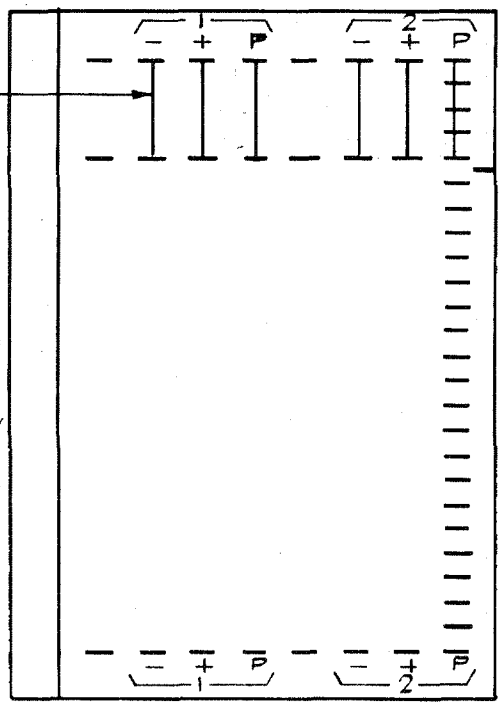
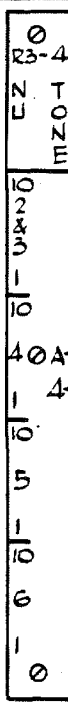
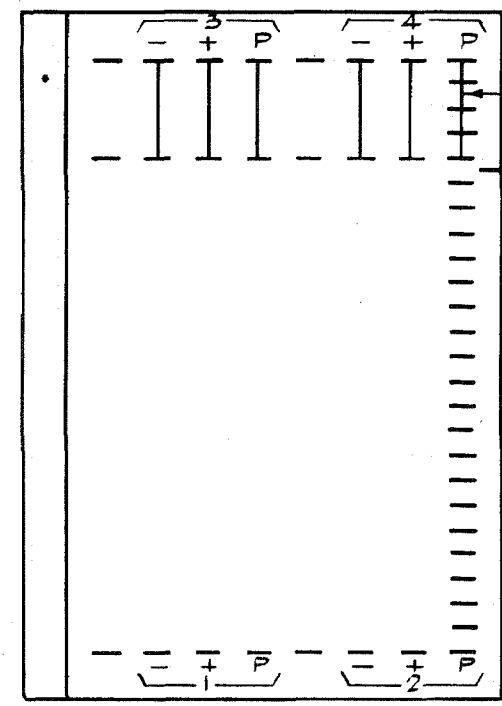
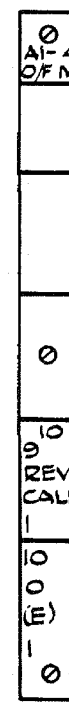
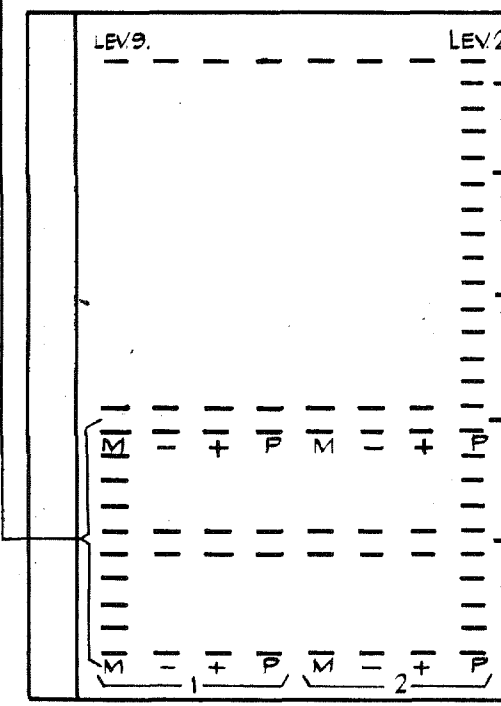
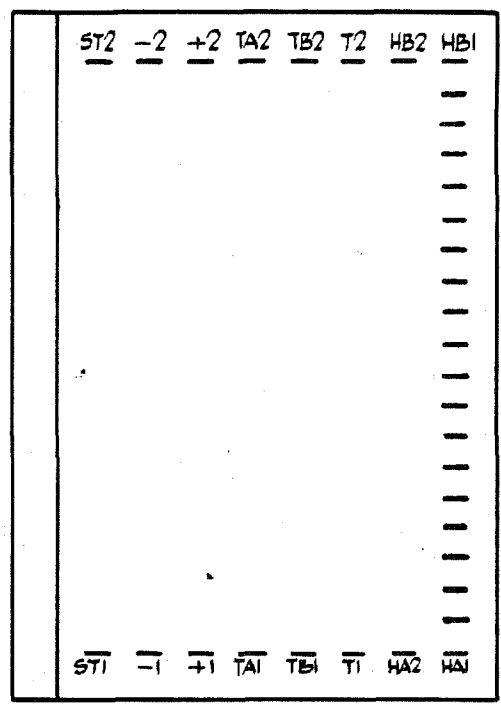
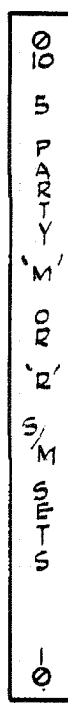
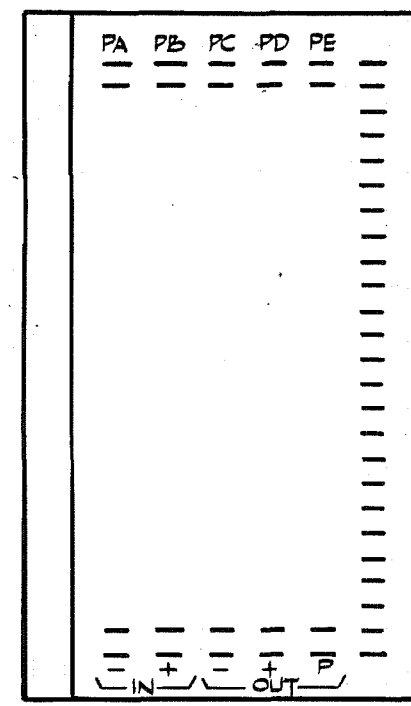
- NOTES:-
- 7.1. MARKING ON SIDES OF STRIPS CONN TO BE IN 1/8" WHITE CHAR.
 - 7.2. MARKING ON FRONT EBONITE STRIPS TO BE IN 1/8" WHITE CHAR. UNLESS OTHERWISE STATED.
 - 7.3. ALL LINES ON SIDES OF STRIPS CONN OR FRONT EBONITE STRIPS TO BE WHITE.
 - 7.4. JUMPER SIDE OF TAG IS SHOWN. ALL MARKING ADJACENT TO TAGS SHALL BE ON BOTH SIDES OF STRIPS CONN

ISSUE	APP
8. 4. 65	HG/2
REF. - GEN. DRAWING 577967 SH. 7.	
FU. PD. - 2/808350	

**TYPICAL EQUIPMENT
COMBINED
M.D.F. I.D.F. & MISC. EQUIPT.
RACK 'C' MARK 4.
UNIT AUTO N.Z. 13**

DRAWN HB	ENGINEERS	APPROVED	DRAFT ENG
TRACED 21/1/65			
CHECKED 3			
495887 SH. 7.		AUTOMATIC TELEPHONE ELECTRICALS LIVERPOOL	

CHARACTERS SHOWN FOR REFERENCE PURPOSES ONLY. NOT TO BE MARKED.
 STRIPS TO BE WIRED ON RIGHT HAND SIDE OF TERM. STRIPS AS SEEN FROM LOCAL SIDE.



VERTICAL 1.

VERTICAL 2.

VERTICAL 3.

VERTICAL 4.

VERTICAL 5.

POSITIONS DRAWN AS SEEN FROM LOCAL SIDE.

FIG. 21.

- NOTES:-
- 8-1. MARKING ON SIDES OF STRIPS. CONN TO BE IN 1/8" WHITE CHARACTERS.
 - 8-2. MARKING ON FRONT EBONITE STRIPS TO BE IN 1/8" WHITE CHARACTERS EXCEPT WHERE OTHERWISE STATED.
 - 8-3. ALL LINES ON SIDES OF STRIPS CONN OR ON FRONT EBONITE STRIPS TO BE 1/2" WHITE.
 - 8-4. JUMPER SIDE OF TAG IS SHOWN. ALL MARKING ADJACENT TO TAGS SHALL BE ON BOTH SIDES OF STRIPS CONN.

1	8. 4. 65.	HE/EE
2.	C.O. 4885. VERTICAL 2 8x25 TAGLOCKS WERE SHOWN	570
9.	3.	66 APR.

REF - G.E.C. DRAWING
 877967, SH. 8.
 FU. PG. - 2/808350.

TYPICAL EQUIPMENT
 COMBINED
 M.D.F. I.D.F. & MISC. EQUIPT.
 RACK 'C' MARK 4
 UNIT AUTO. N.Z. 13.

DRAWN	HE	ENGINEERS		APPROVED	HE/EE
TRACED	26/1/68			DRFT	HE/EE
CHECKED	RS				