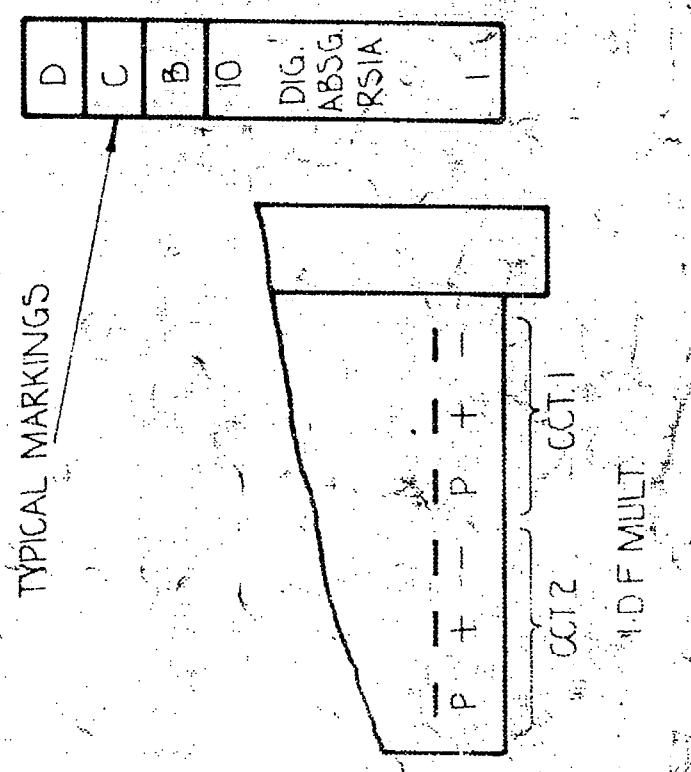
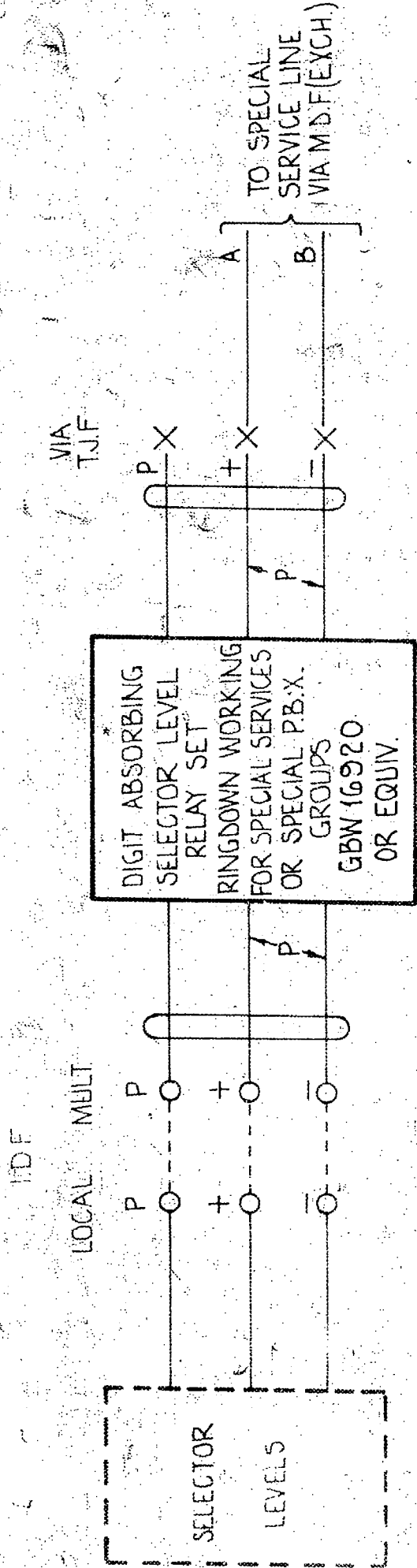


Centimetres

FIG A D/O TO SPECIAL SERVICE LINE (EIG PHONOGRAMS)



SHTS 5 & 6 ADDED.	(39604) 2	26-7-71	B.S.H.
	(86060)	6-10-69	<i>RS</i>

DRN	APPROVED	ENG
TR		
CHK	D	
ENG	R	DEPT

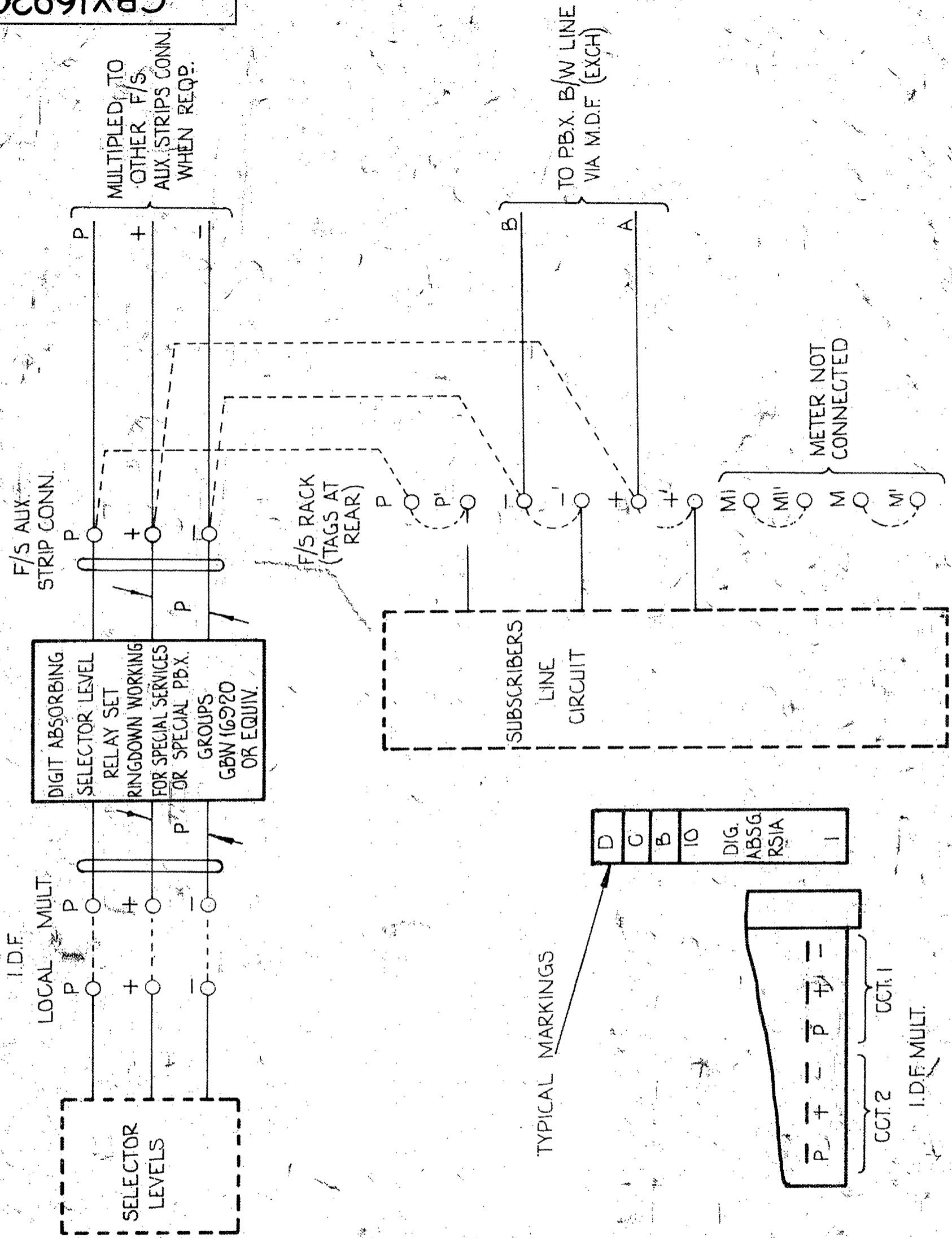
DIGIT ABSORBING SELECTOR LEVEL RELAY SET  
RINGDOWN WORKING FOR SPECIAL SERVICES OR PBX GROUPS  
2000 TYPE

TOLERANCES UNLESS OTHERWISE STATED		
FRACTIONS ± 1/64	DECIMALS ± .008	ANGLES ± 2°
(HOLES (DIA.) + .003 - .001	HOLES (CRS.) POSN TOL 002 DIA	
N.Z.P.O.	SIZE <b>S</b>	

5 Centimetres

FIG. B P.B.X. GROUP EXCEEDING 15 LINES

BOTHWAY USING AUX STRIP CONNECTION ON FINAL SELECTOR RACK & WHERE FLEXIBILITY LINE OF CONNECTION BETWEEN SPARE LINE CIRCUIT AND SELECTOR LEVEL R/S IS REQD.



I.D.F.

LOCAL MULT

SELECTOR LEVELS

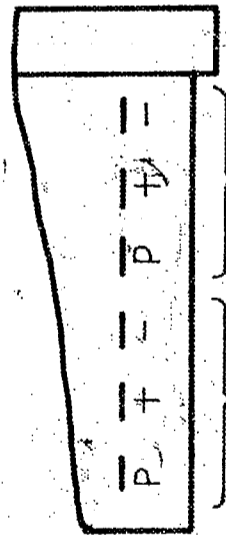
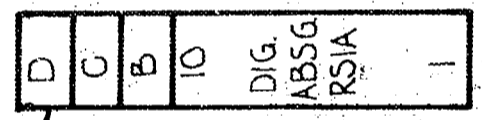
DIGIT ABSORBING SELECTOR LEVEL RELAY SET RINGDOWN WORKING FOR SPECIAL SERVICES FOR SPECIAL P.B.X. OR SPECIAL P.B.X. GROUPS GBW 16920 OR EQUIV.

F/S RACK (TAGS AT REAR)

TO P.B.X. B/W LINE VIA M.D.F. (EXCH)

METER NOT CONNECTED

TYPICAL MARKINGS



I.D.F. MULT.

A4	DRN	APPROVED	ENG
	TR		
	CHK		
	ENG		
	D.M.C.D.	DEPT.	

DIGIT ABSORBING SELECTOR LEVEL RELAY SET RINGDOWN WORKING FOR SPECIAL SERVICES OR P.B.X. GROUPS 2000 TYPE.

TOLERANCES UNLESS OTHERWISE STATED		
FRACTIONS ± 1/64	DECIMALS ± .008	ANGLES ± 2°
HOLES (DIA.) + .003 - .001		HOLES (CRS.) POSN. TOL. ± .002 DIA. P
N.Z.P.O.		SIZE S

5 Centimetres

10

15

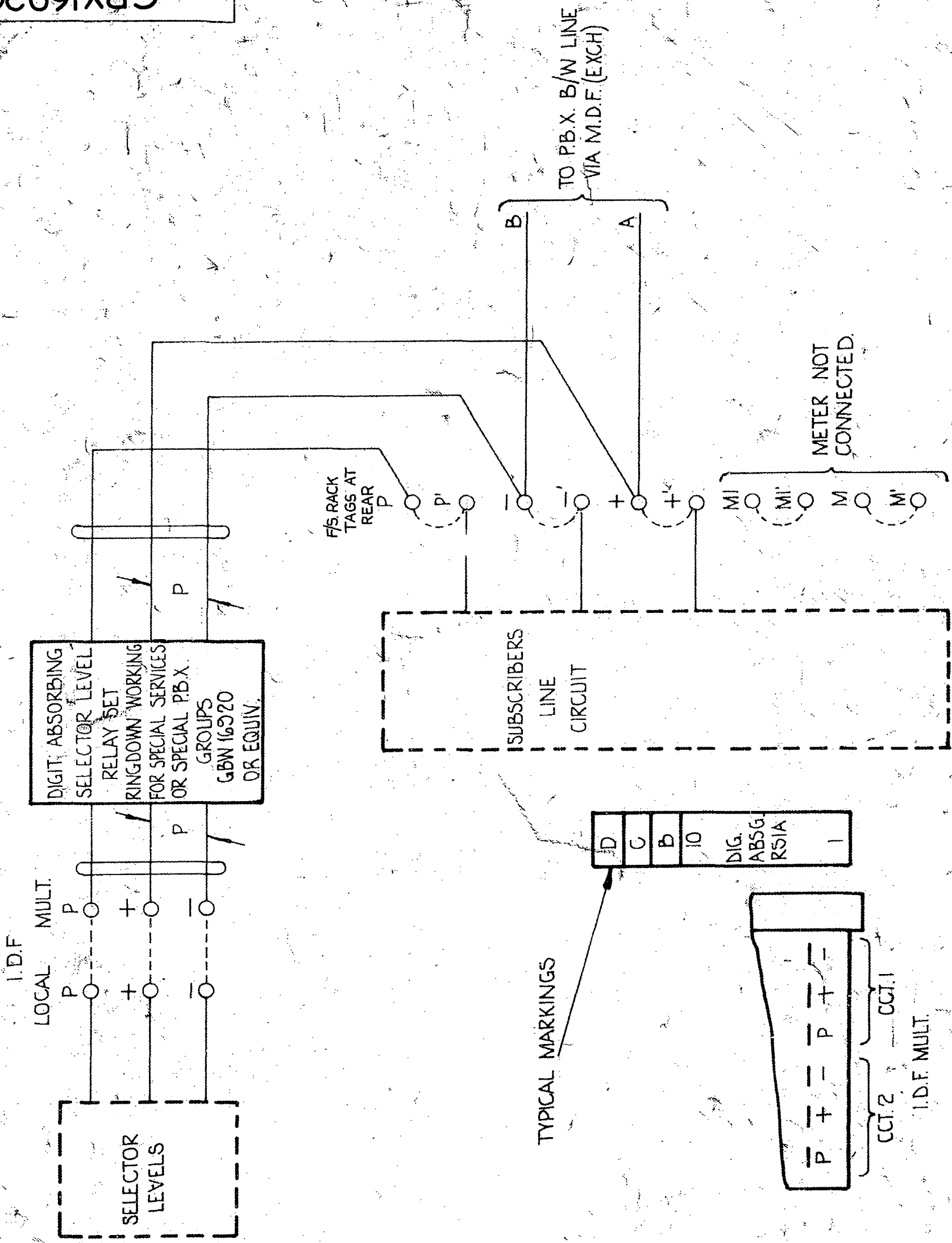
20

25

30

**FIG. C PB.X. GROUP EXCEEDING 15 LINES**

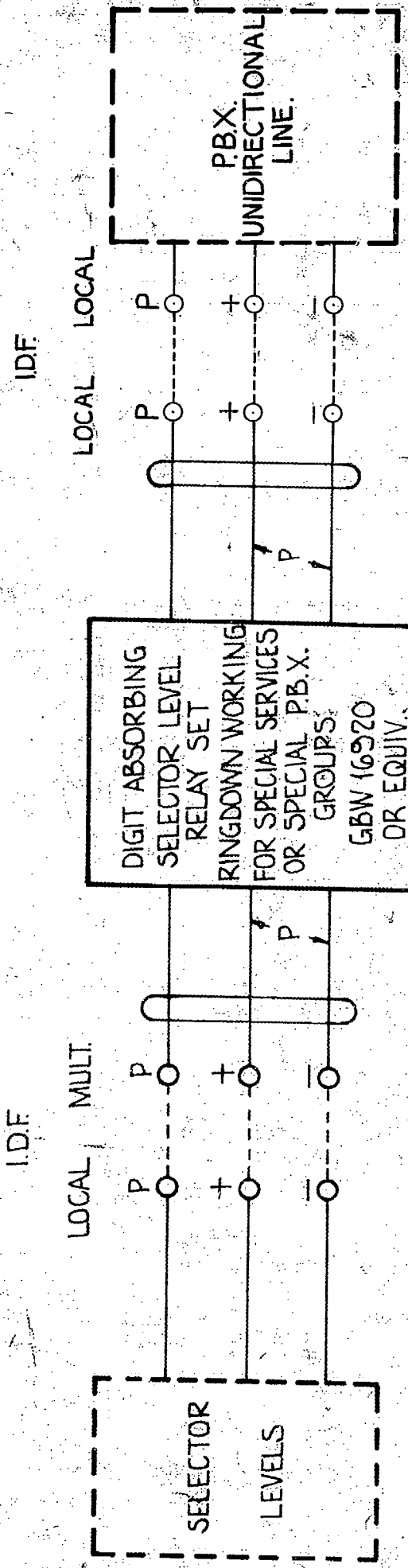
BOTHWAY TO SUBSCRIBERS LINE CIRCUIT DIRECT LINE (VIA TAGS AT REAR OF FINAL SELR. RACK)



MINOR AMENDMENT		(39604)	2	26-7-71	B.S.-H.	REF :-	C	
		(86060)	1	6-10-69	Rw			
AMENDMENT		ISSUE	DATE	APPD.	TOLERANCES UNLESS OTHERWISE STATED			
A3	DRN C.M.P.	APPROVED	ENG	DIGIT ABSORBING SELECTOR LEVEL RELAY SET		FRACTIONS	DECIMALS	ANGLES
	TR			RINGDOWN WORKING FOR SPECIAL SERVICES OR PB.X. GROUPS 2000 TYPE.		$\pm 1/64$	$\pm .008$	$\pm 2^\circ$
A4	CHK D.M.D.	DEPT.			HOLES (DIA.)	HOLES (CRS.)		
	ENG B.R.				+ .003 - .001	POSN. TOL. .002 DIA.	SIZE	
				N.Z.P.O.	S			
GBX16920SHT3								

5 Centimetres 10 15 20 25 30

FIG D OIG TO PBX UNIDIRECTIONAL LINE (SPECIAL PBX GROUPS)



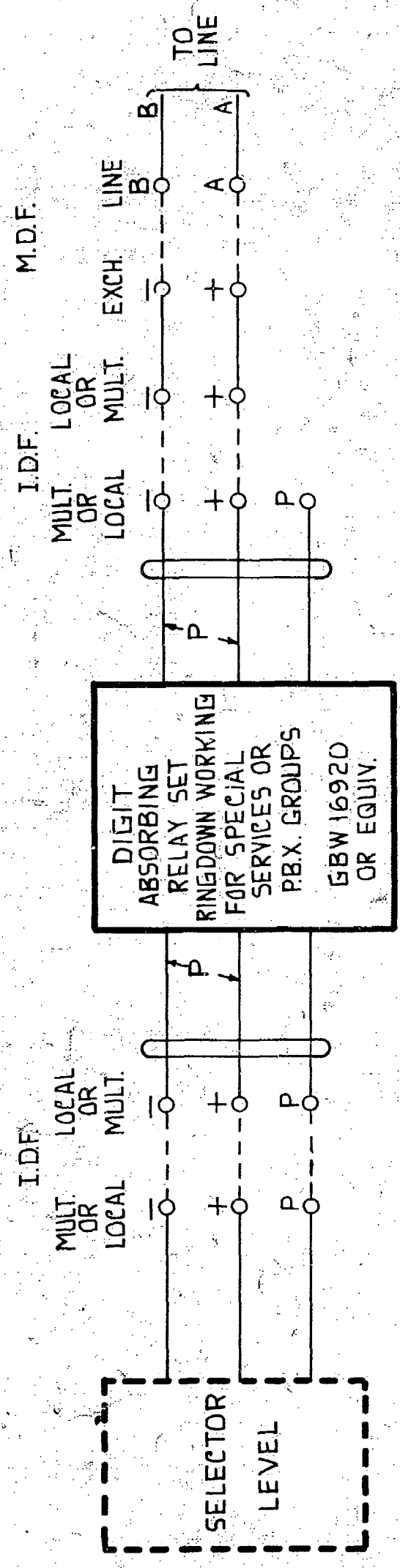
D	C	B	10	DIG. ABSG RS1A
---	---	---	----	----------------

TYPICAL MARKING

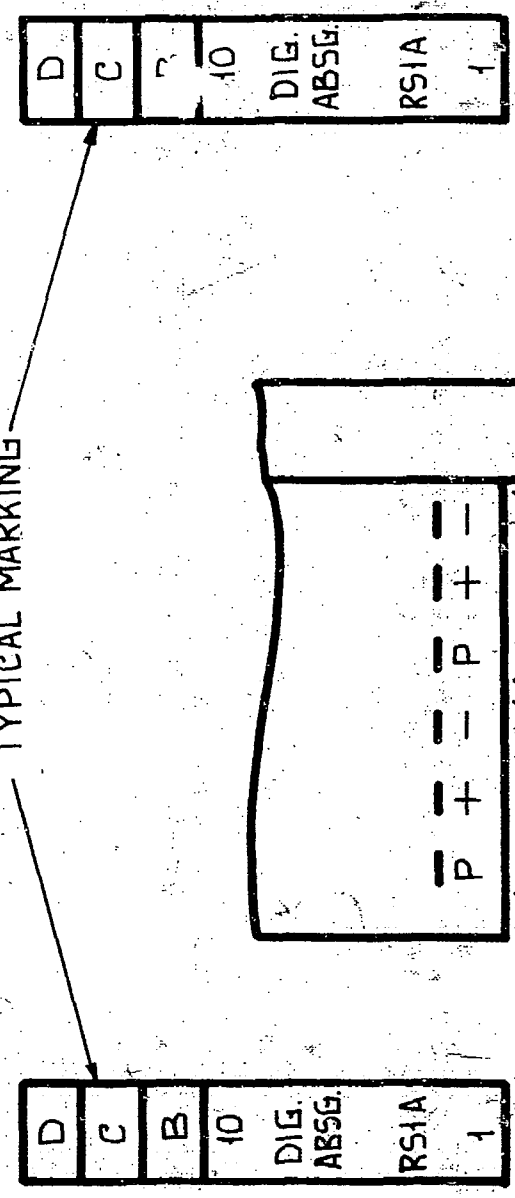


IDF BLOCK VIEW ADDED & REF. TO T.J.F. DELETED.				(39604)	2	26-7-71	B.S.H.	REF: C		
AMENDMENT				(86060)	1	6-10-69	Res			
A3	DRN	APPROVED	ENG	DIGIT ABSORBING SELECTOR LEVEL RELAY SET RINGDOWN WORKING FOR SPECIAL SERVICES OR PBX GROUPS 2000 TYPE.				TOLERANCES UNLESS OTHERWISE STATED		
	TR							FRACTIONS	DECIMALS	ANGLES
CHK		ENG	DEPT.					HOLES (DIA.)	HOLES (CRS.)	
ENG								+ .003 - .001	POSN. FOL. .002 DIA.	
A4				N.Z.P.O.			SIZE	S		
								GBX16920 SHT 4		

**FIG. E UNIDIRECTIONAL LINE OUTGOING TO SUBSCRIBER.**



TYPICAL MARKING



I.D.F. MULT. OR LOCAL.

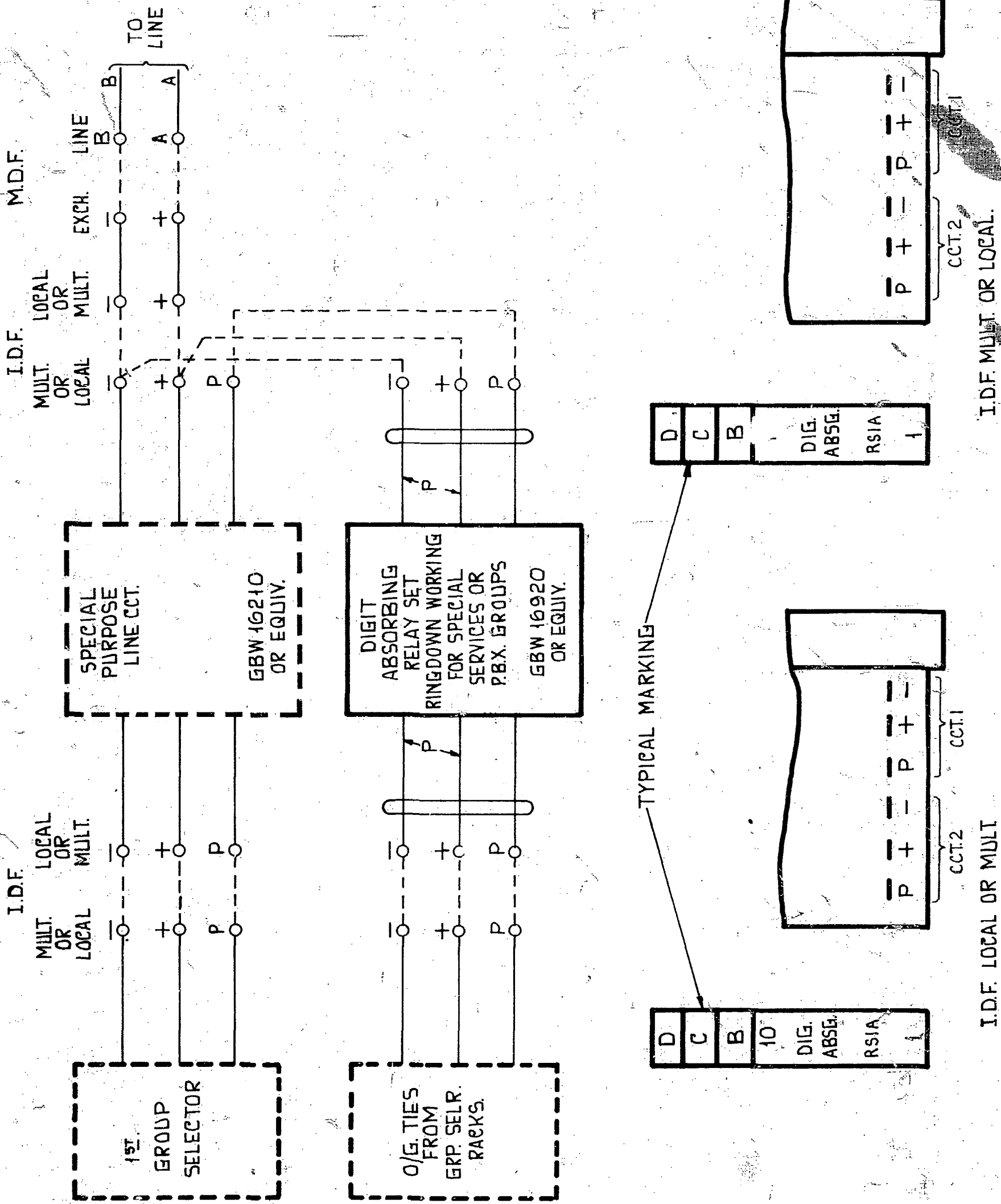
I.D.F. LOCAL OR MULT.

A3		DRN R.B.R.	APPROVED	ENG	<b>DIGIT ABSORBING SELECTOR LEVEL                  RELAY SET                  RINGDOWN WORKING FOR SPECIAL SERVICES                  OR P.B.X. GROUPS                  2000 TYPE</b>	TOLERANCES UNLESS OTHERWISE STATED ALL DIMENSIONS ARE IN INCHES DIMENSIONS ARE BEFORE FINISHING SYMBOLS TO ASS. 308 FRAC. DIMS. STR. TOL. WIDE DEC. DIMS. FLAT TOL. WIDE ANGLES PAR. TOL. WIDE SQ TOL. WIDE CONC. TOL. DIA HOLES DIA. POSN. TOL. DIA SYMMETRY TOLERANCE OF THE DIMENSION SYMMETRIC ABOUT C IS EQUALLY DIVIDED ABOUT THE C
A4		CHK R.B.R.		DEPT E836		
		ENG R.L.				
AMENDMENT					(39604)	ISS. DATE APPD.
					2	26-7-71 B.5-H.
REF. C						
<b>GBX 16920 SHT. 5</b>						

NZPO SIZE S

# GBX 16920 SHT. 6

FIG.F BOTHWAY LINE TO & FROM SUBSCRIBER



AMENDMENT		(39604)	2	26-7-71	B.S.H.	REF.	C			
ISS.		DATE	APPD.							
A3	DRN	RBR	APPROVED	ENG	DIGIT ABSORBING SELECTOR LEVEL RELAY SET RINGDOWN WORKING FOR SPECIAL SERVICES OR P.B.X. GROUPS. 2000 TYPE					
	TR									
A4	CHK	RB.	DEPT	E836				PERAC DIMS	STR TOL	WIDE
	ENG	R.G.						DEC DIMS	FLAT TOL	WIDE
					HOLES	POSN TOL	DIA			
					TOLERANCES UNLESS OTHERWISE STATED ALL DIMENSIONS ARE IN INCHES DIMENSIONS ARE BEFORE FINISHING SYMBOLS TO ASS 108					
					PERAC DIMS DEC DIMS HOLES TOL	STR TOL FLAT TOL PAR TOL WIDE CONC TOL	WIDE WIDE WIDE DIA			
					HOLES POSN TOL DIA SYMMETRY TOLERANCE OF THE DIMENSION SYMMETRY ABOUT C IS EQUALLY EXPDED ABOUT					
NZPO		SIZE	S	GBX 16920 SHT. 6						