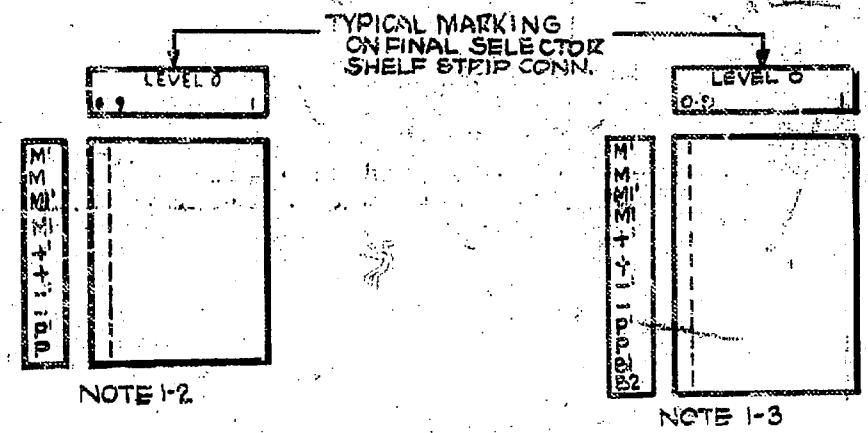


- NOTES:-
- 1-1 FOR PBX BUSYING TRANSFER LINK FROM BI-32 TO BI-P
  - 1-2 TAGBLOCK FOR EXCHANGES HAVING FLOOR TYPE M.D.F.S
  - 1-3 TAGBLOCK FOR ALL EXTENSIONS AND NEW WORK

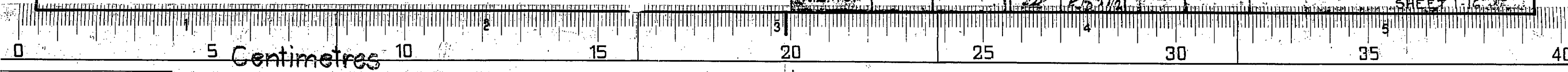


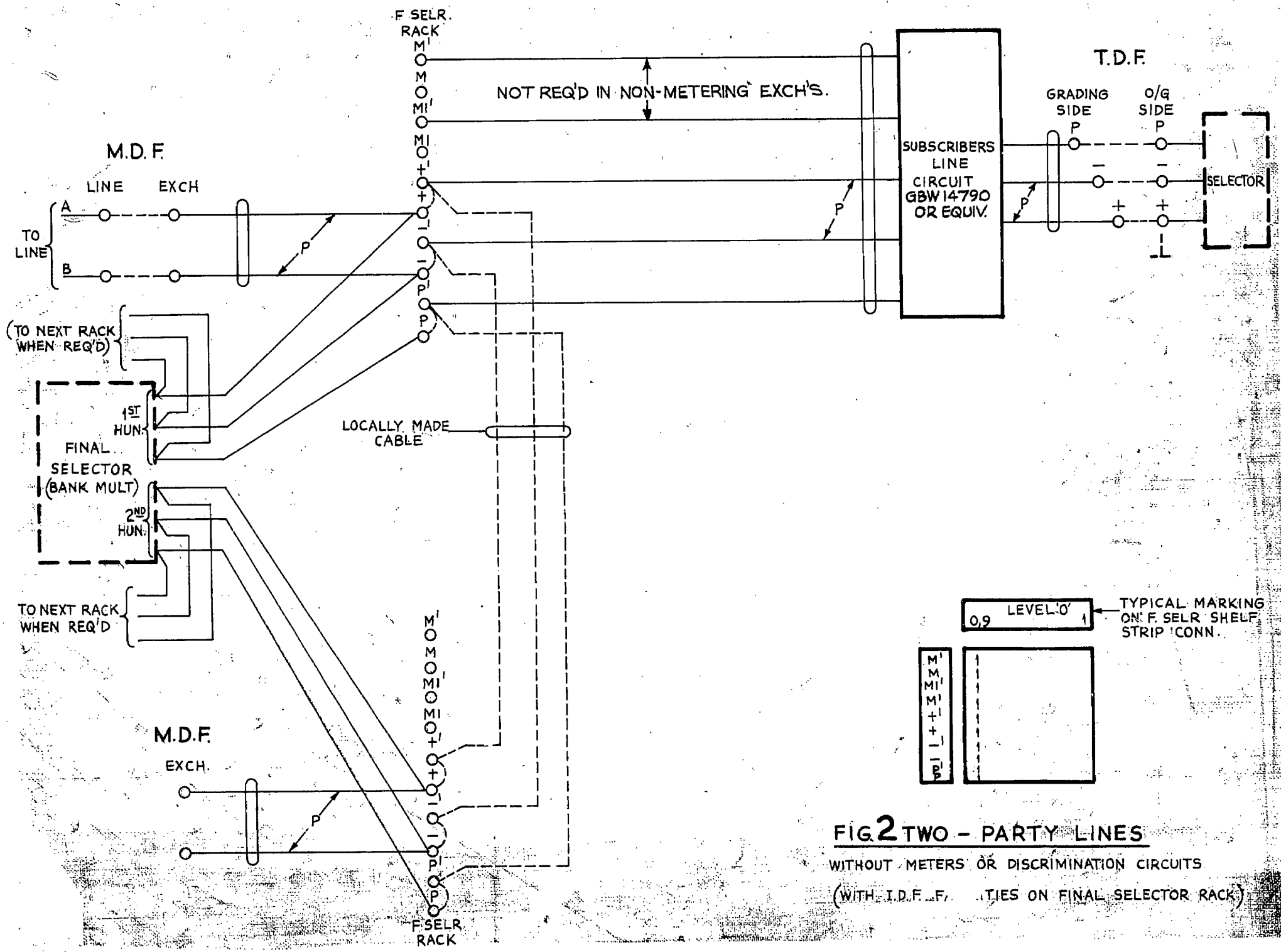
**FIG 1 REGULAR & 210 PBX SUBSCRIBERS**  
(WITH I.D.F. FACILITIES ON FINAL SELS RACK)

NOTE ON M1&M LEADS ADDED.	(13201)	6	26-170	RW	SUBSCRIBERS LINE CIRCUIT POSITIVE BATTERY METERING DOUBLE HOMING WITH SUBSCRIBERS DISCONNECT
SHEET 12 ADDED.	(89913)	5	24-964	DL	
SHEET 11 ADDED.	(72288)	4	19-264	DRH	
SHEETS 15, 16 ADDED	(63706)	9	27-281	JR	
NO CHANGE SHTS 13-14 AMENDED.	(13201)	8	26-170	RW	AMENDMENT PARTICULARS
NO CHANGE SHTS 7-8 AMENDED.	(13201)	7	26-170	RW	
AMENDMENT PARTICULARS		ISSUE	DATE	APP'D	
NZ PD.		DRAWN	CHECKED	WIRING	EMPH
		DL	FLD 27/70		

**GBX 14790**

SHEET 16





**FIG 2 TWO - PARTY LINES**  
 WITHOUT METERS OR DISCRIMINATION CIRCUITS  
 (WITH I.D.F. TIES ON FINAL SELECTOR RACK)

NO CHANGE. SHTS 7-8 AMENDED (13201)	17	26-1-70	Rw	SUBSCRIBERS LINE CIRCUIT POSITIVE BATTERY METERING DOUBLE HOMING WITH SUBSCRIBERS DISCONNECT
NOTE ON MI & M LEADS ADDED (13201)	6	26-1-70	Rw	
SHEET 12 ADDED (89913)	5	24-9-64	Rw	
SHEET 11 ADDED (72298)	4	19-2-64	Rw	
SHEETS 15 & 16 ADDED (63706)	9	27-2-81	JR	
NO CHANGE. SHTS. 13-14 AMENDED (13201)	8	26-1-70	Rw	
AMENDMENT PARTICULARS	ISSUE	DATE	APPR	H
<b>GBX 14790</b> SHEET 2-16				
N.Z.P.O.	DRAWN	CHECKED	WIRING	ENGRS

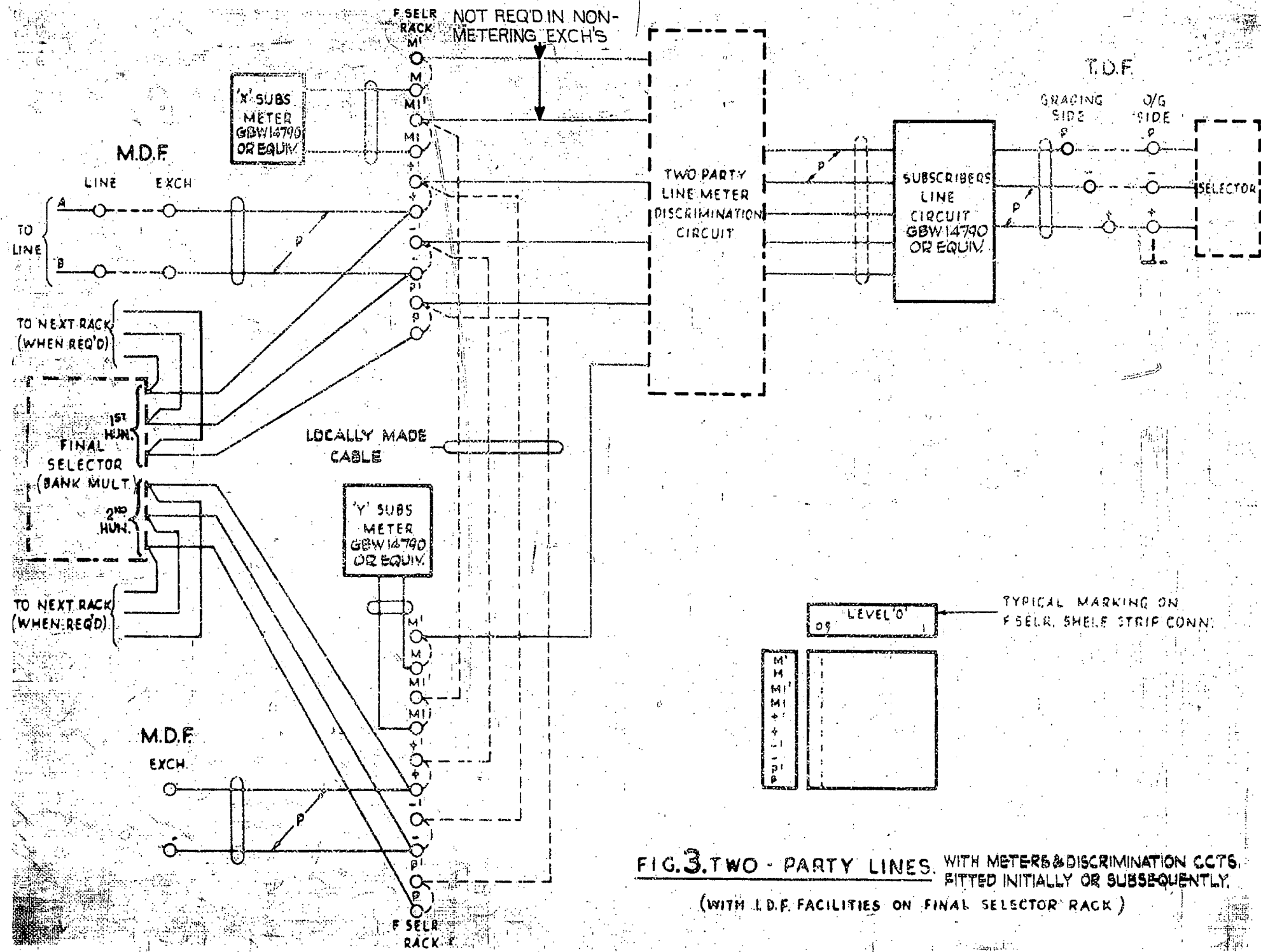
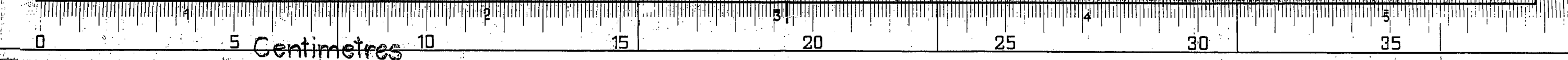
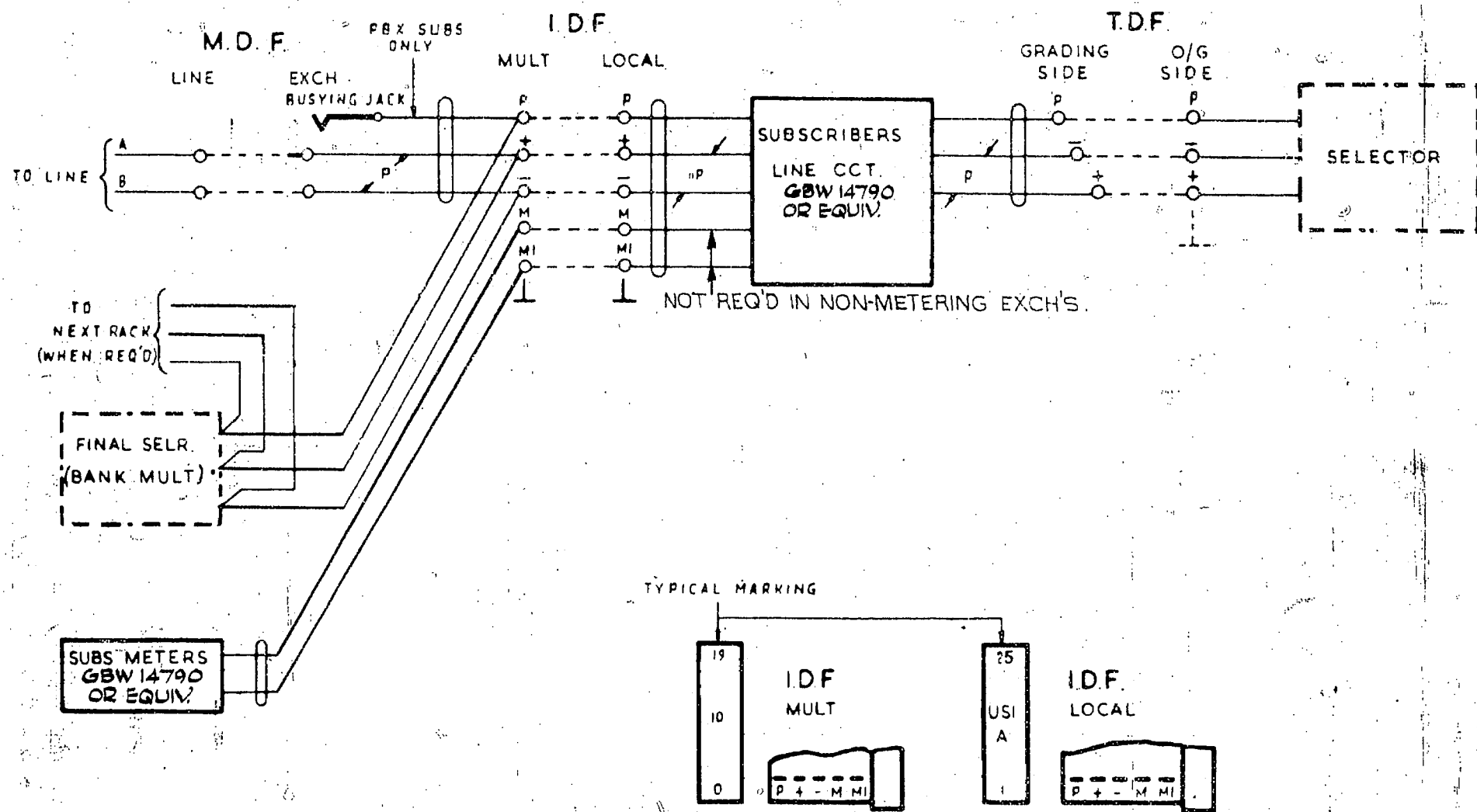


FIG. 3. TWO - PARTY LINES. WITH METERS & DISCRIMINATION CCTS. FITTED INITIALLY OR SUBSEQUENTLY. (WITH I.D.F. FACILITIES ON FINAL SELECTOR RACK)

NO CHANGE SHTS 7-8 AMENDED.	(13201)	7	26.170	RW	SUBSCRIBERS LINE CIRCUIT POSITIVE BATTERY METERING DOUBLE HOMING WITH SUBSCRIBERS DISCONNECT	
NOTE ON MI & M LEADS ADDED.	(13201)	6	26.170	RW		
SHEET 12 ADDED	(89913)	5	24.964	WZ		
SHEET 11 ADDED	(72298)	4	19.267	DK		
SHEETS 15 & 16 ADDED	(63106)	9	27.2.811	JR		
NO CHANGE SHTS. 13-14 AMENDED.	(13201)	8	26.170	RW		
AMENDMENT PARTICULARS				ISSUE	DATE	APP
N.Z.P.O.				SHAWN	CHECKED	WIRING ENGINEER

**GBX 14790**





**FIG. 4. REGULAR & 2-10 PBX SUBSCRIBERS**  
(WITH CENTRALISED I.D.F.)

NO CHANGE SHTS. 7-8 AMENDED	(1320)	7	26.1.70	RW	SUBSCRIBERS LINE CIRCUIT POSITIVE BATTERY METERING DOUBLE HOMING WITH SUBSCRIBERS DISCONNECT	
NOTE ON MI & M LEADS ADDED	(1320)	6	26.1.70	RW		
SHEET 12 ADDED	(89913)	5	24.9.64	MC		
SHEET 11 ADDED	(72298)	4	19.2.64	DBH		
SHEETS 15 & 16 ADDED	(63706)	9	27.2.81	JR		
NO CHANGE SHTS 13-14 AMENDED	(1320)	8	26.1.70	RW		
AMENDMENT PARTICULARS			ISSUE	DATE	APPD	
N.Z.P.O.			DRAWN	CHECKED	WIRING	ENGINEER
			<b>GBX 14790</b>			
						SHEET 4-16

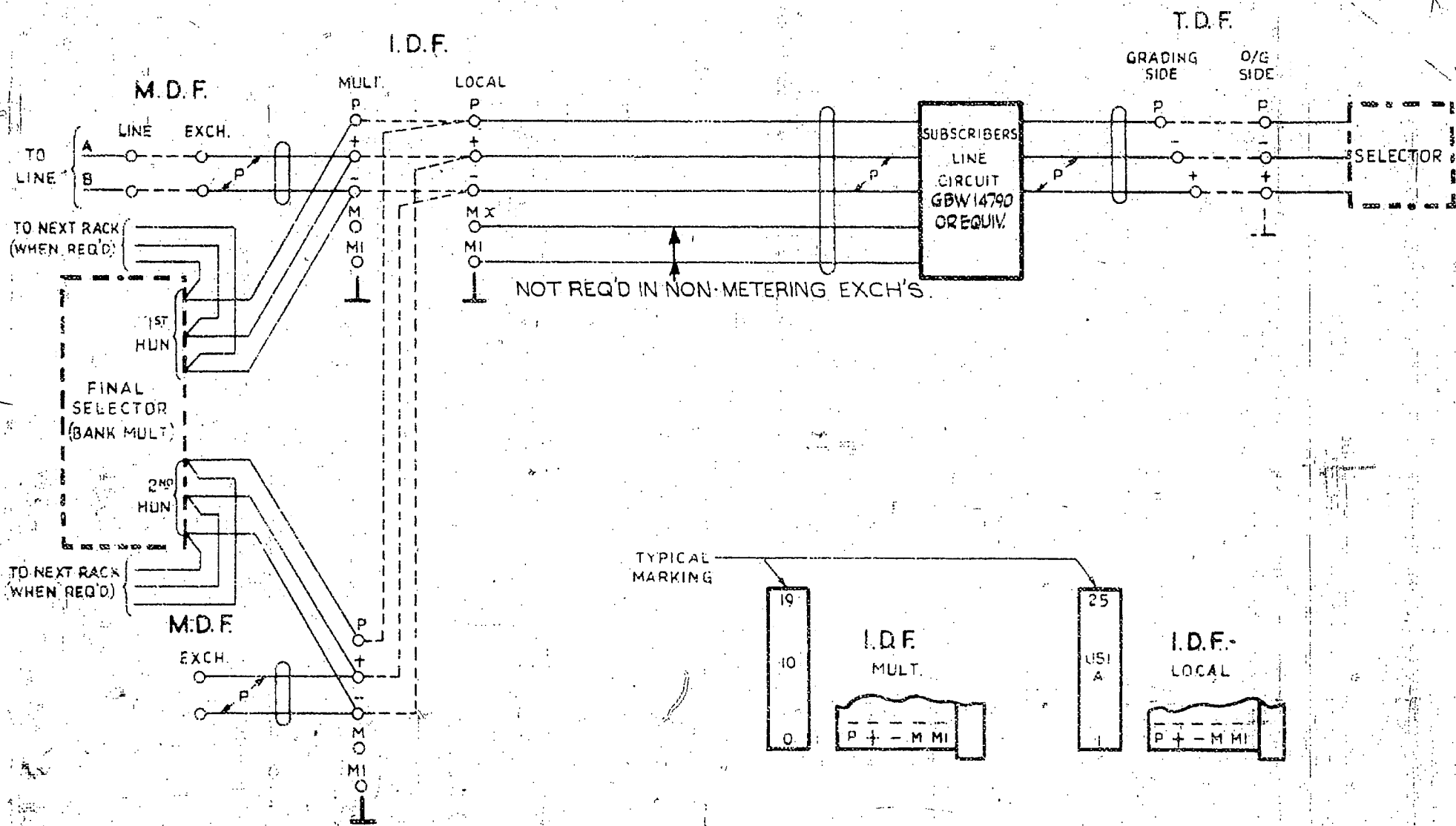


FIG. 5 TWO PARTY-LINES (WITH CENTRALISED I.D.F.)  
WITHOUT METERS OR DISCRIMINATION CIRCUITS

SHEET 15 & 16 ADDED	(63706)	9	27-2-81	JR
NOTE ON MI & M LEADS ADDED	(13201)	6	26-1-70	Rw
SHEET 12 ADDED	(89913)	5	24-9-64	Rc
SHEET 11 ADDED	(72298)	4	19-2-64	BBK

NO CHANGE SHTS. 13-14 AMENDED	(13201)	8	26-1-70	Rw
NO CHANGE SHTS. 7-8 AMENDED	(13021)	7	26-1-70	Rw

AMENDMENT PARTICULARS	ISSUE	DATE	APPR	
-----------------------	-------	------	------	--

N.Z. P.O.

DRAWN CHECKED WIRING ENGINEERS

GBX14790

SHEET 5416

5 Centimetres

10

15

20

25

30

35

40

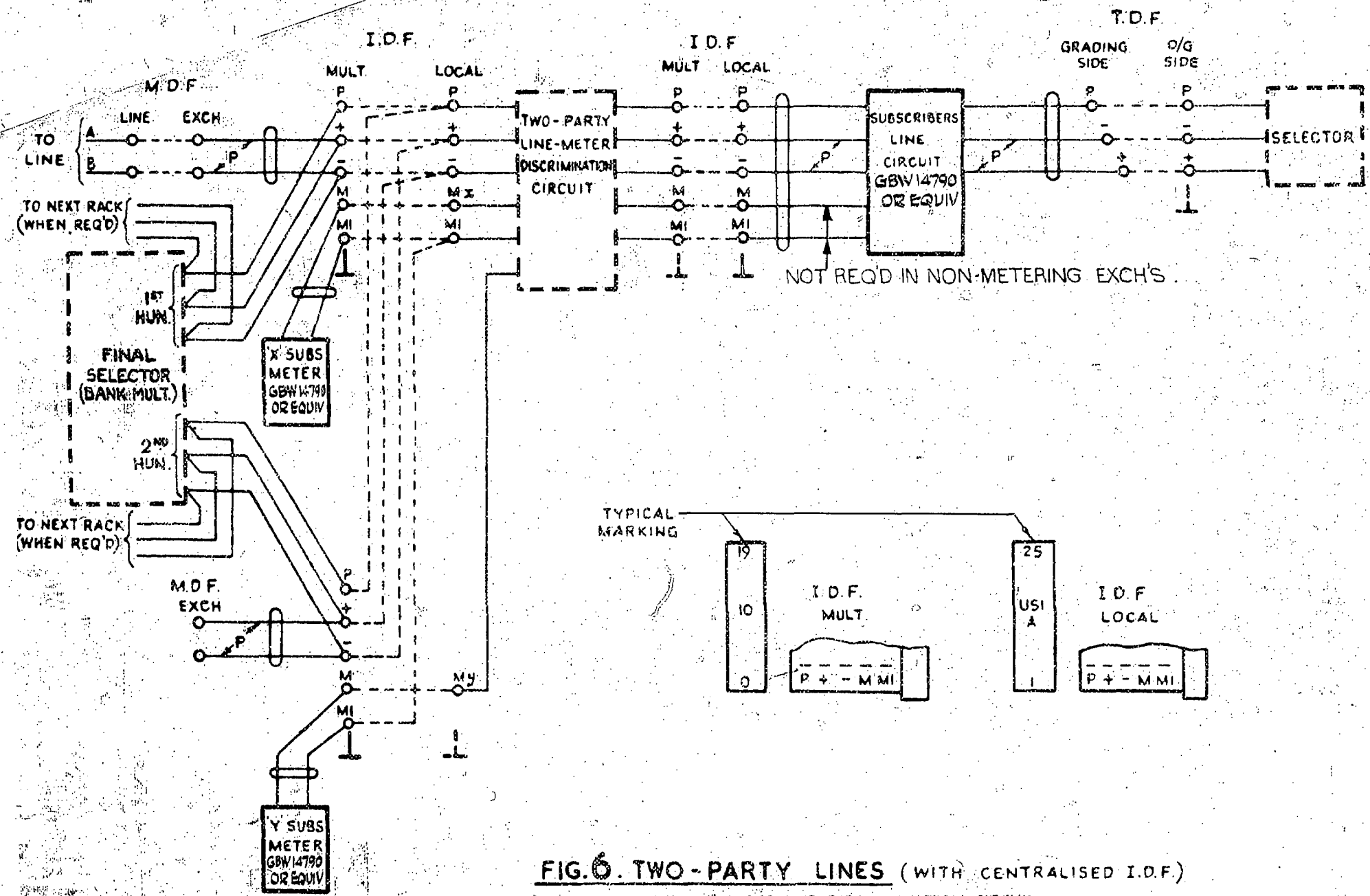
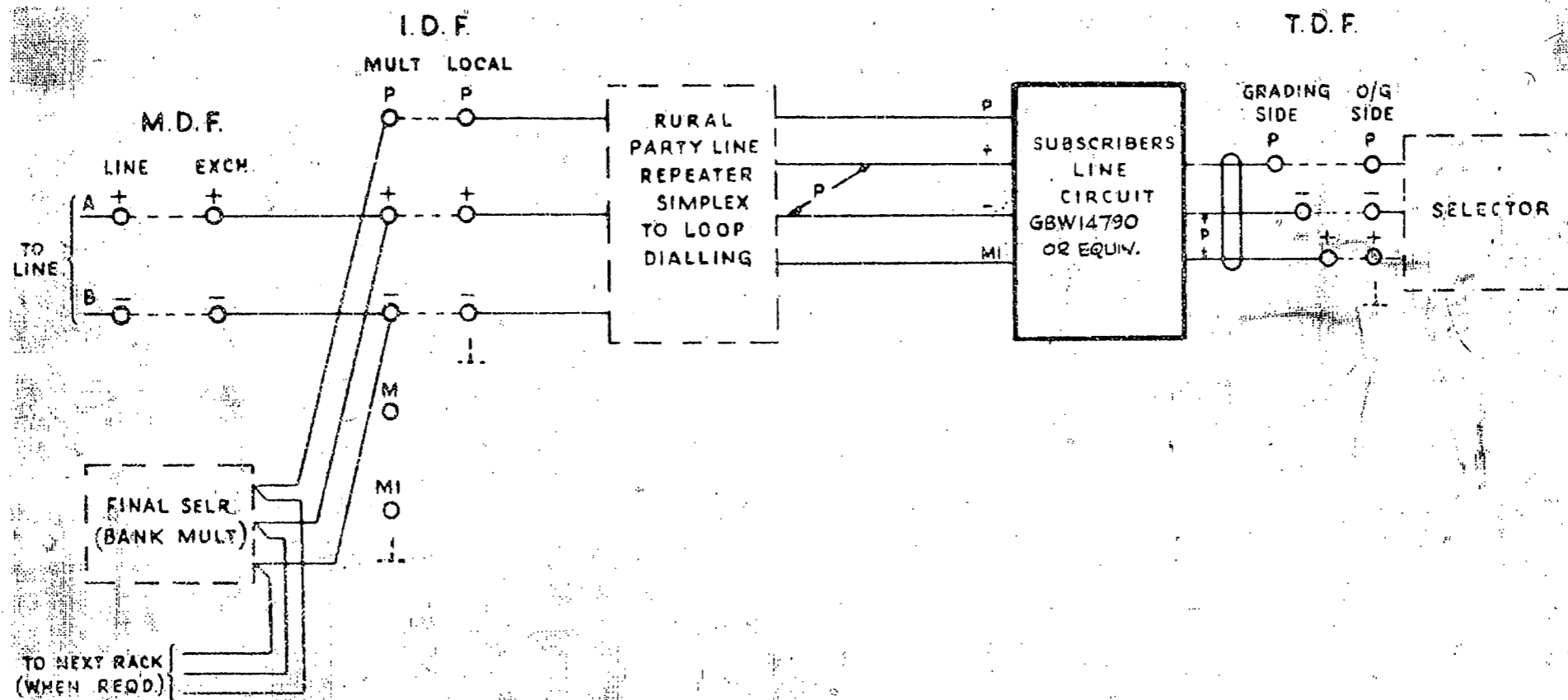


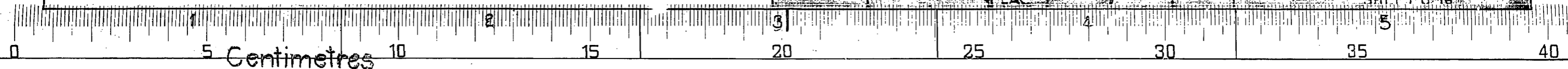
FIG. 6. TWO-PARTY LINES (WITH CENTRALISED I.D.F.)  
WITH METERS AND DISCRIMINATION CIRCUIT.

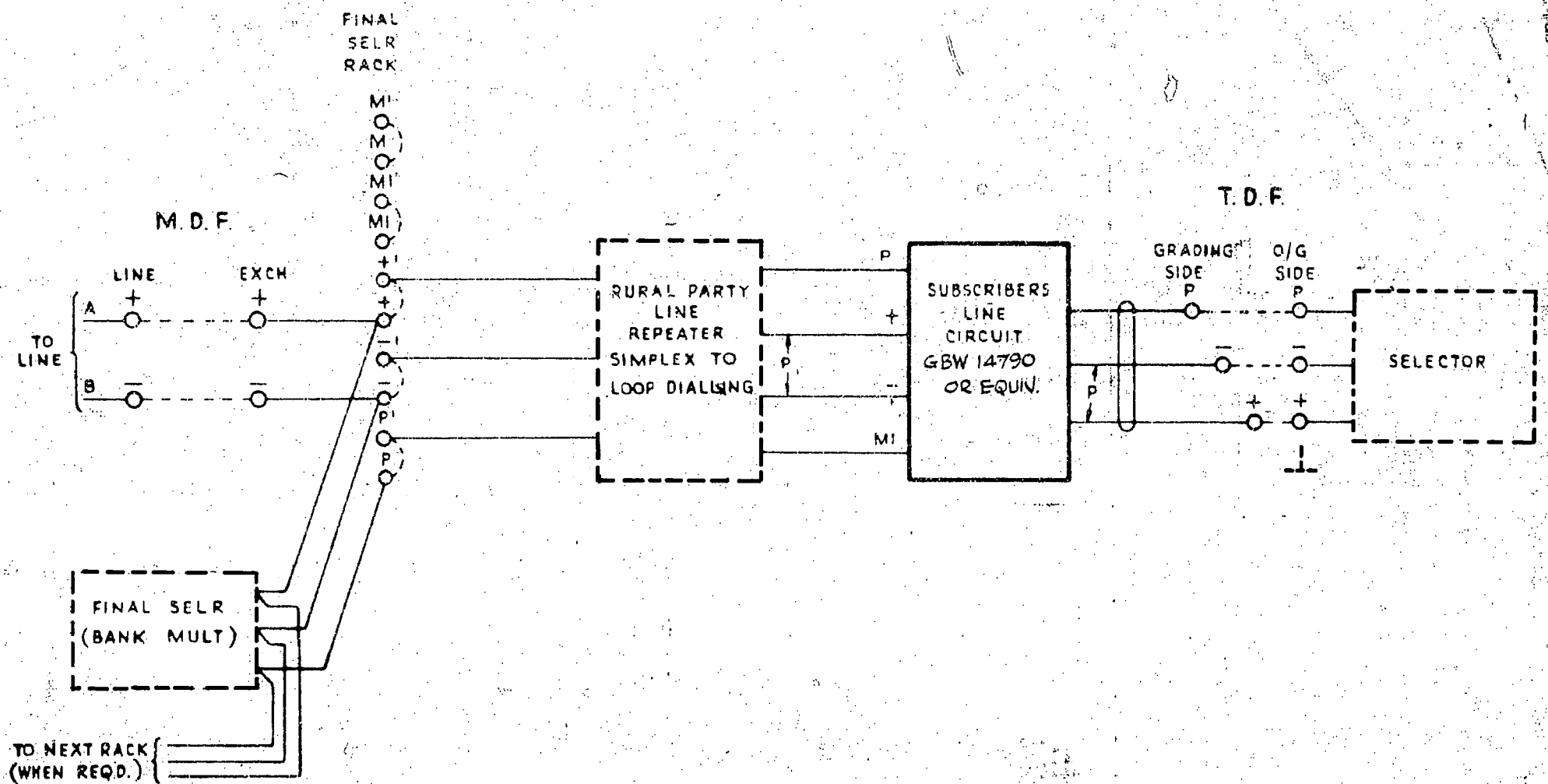
SHEET 15 & 16 ADDED	(63706)	9	27.2.81	JR	SUBSCRIBERS LINE CIRCUIT POSITIVE BATTERY METERING DOUBLE HOMING WITH SUBSCRIBERS DISCONNECT
NOTE ON MI & M LEADS ADDED	(13201)	8	25.7.70	RW	
SHEET 12 ADDED	(89913)	5	24.8.64	JC	
SHEET 11 ADDED	(92298)	4	19.2.64	DB	
SHT 10 ADDED	(74284)	5	12.7.63	DB	
NO CHANGE SHTS. 13-14 AMENDED	(13201)	8	25.7.70	RW	
NO CHANGE SHTS. 7-8 AMENDED	(13201)	7	25.7.70	RW	
AMENDMENT PARTICULARS	ISSUE	DATE	ADD		
<b>GBX 14790</b>					
W.Z.P.O.	DRAWN	CHECKED	WIRING	TESTED	
	8/8	E.J.D. 27/2			



**FIG. 8. RURAL PARTY LINES.**  
(WITH CENTRALISED I.D.F.)

NOTE REF. ON MI LEAD DELETED	(1320)	7	26.1.70	Rw	SUBSCRIBERS LINE CIRCUIT POSITIVE BATTERY METERING DOUBLE HOMING WITH SUBSCRIBERS DISCONNECT
NOTE ON MI LEAD ADDED	(1320)	6	26.1.70	Rw	
SHEET 12 ADDED	(89913)	5	24.9.64	DC	
SHEET 11 ADDED	(12298)	4	19.2.64	D.	
SHEETS 15 & 16 ADDED	(63706)	9	27.7.81	JR	
NO CHANGE. SHTS. 13 - 14 AMENDED	(1320)	8	26.1.70	Rw	
AMENDMENT PARTICULARS			ISSUE DATE	APPO	H
NZPO		DRAWN	CHECKED	WIRED	ENGINEERS
					<b>GBX 14790</b>
					SHEET 8-16



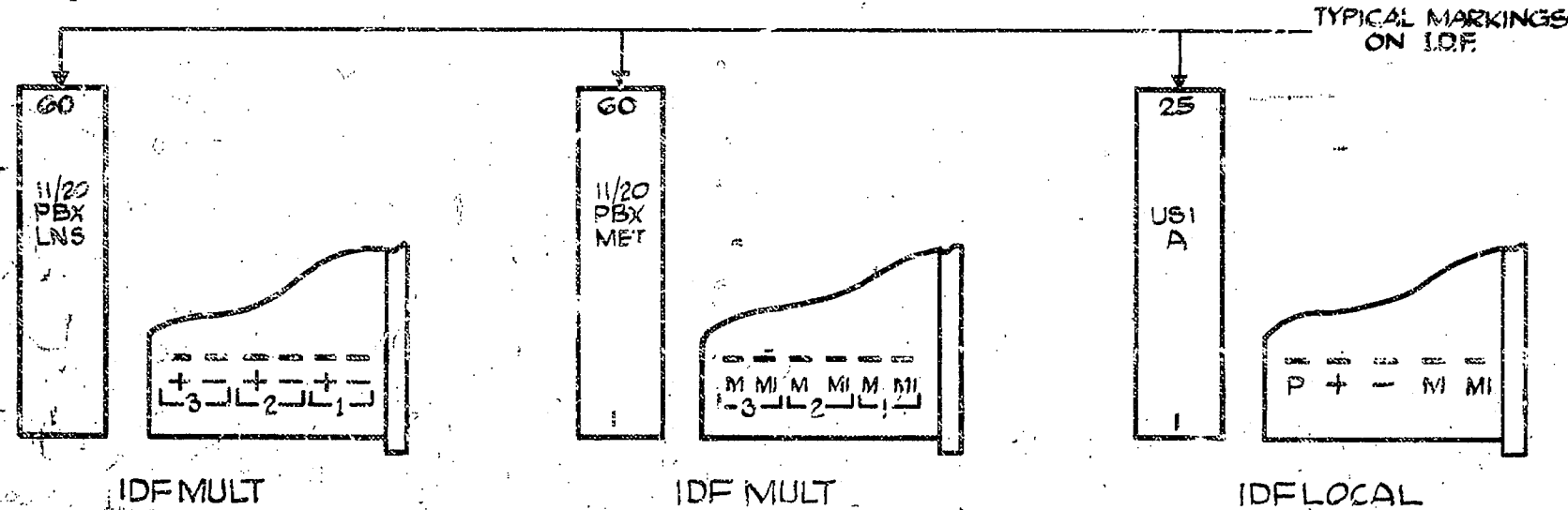
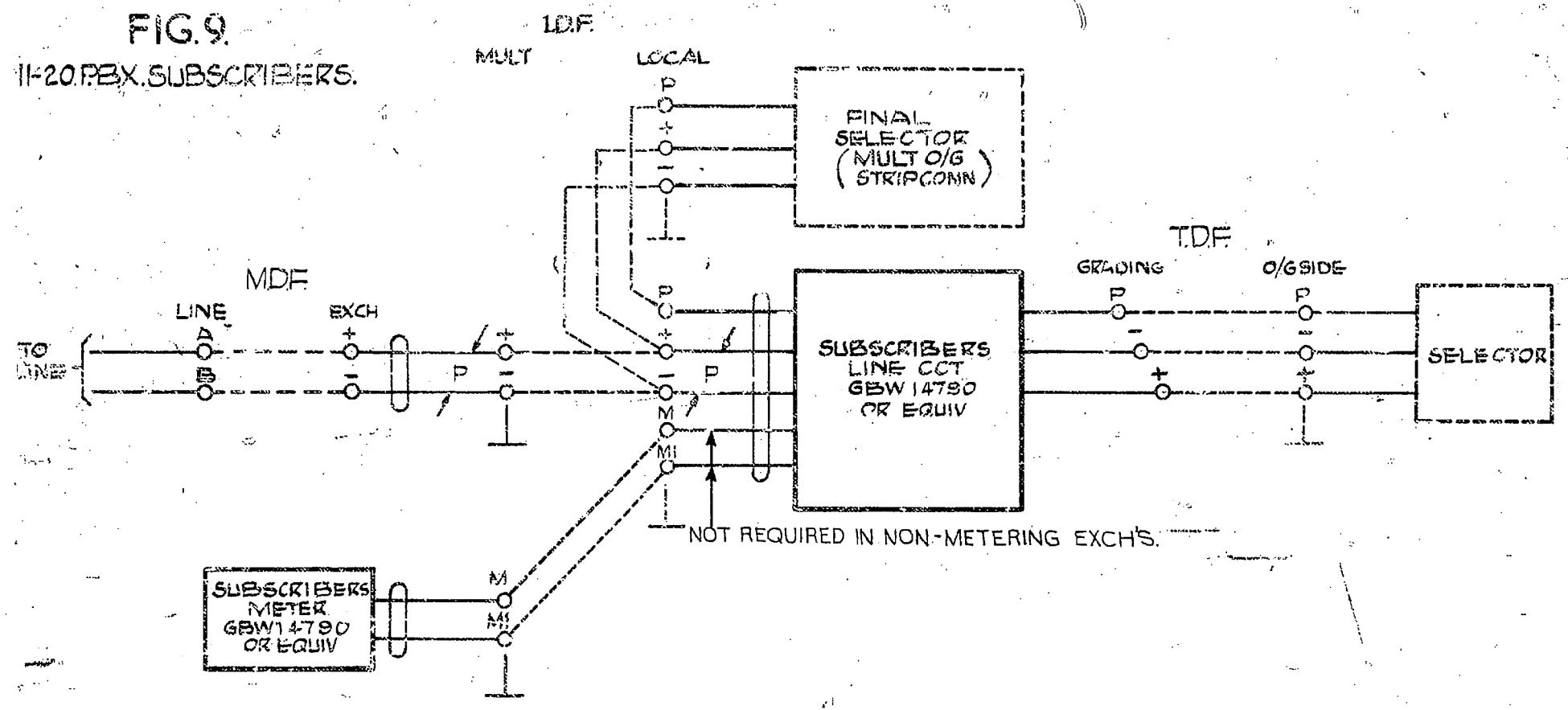


**FIG. 7. RURAL PARTY LINES.**

(WITH I.D.F. FACILITIES ON FINAL SELR RACK)

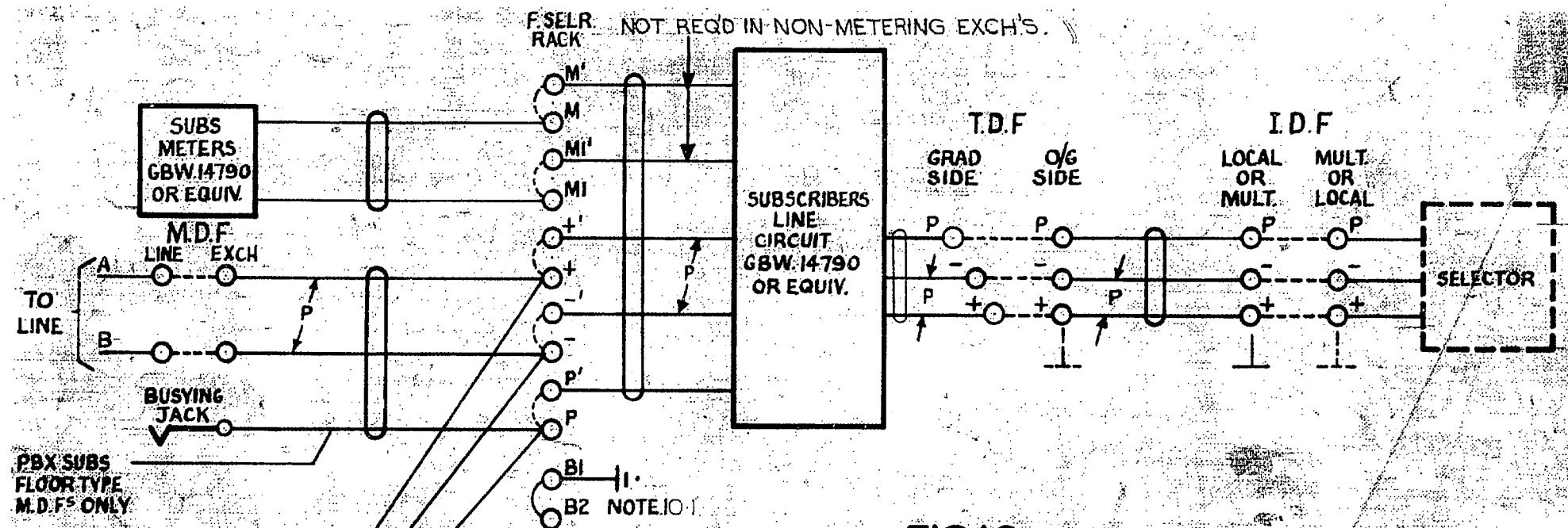
NOTE REF. ON MI LEAD DELETED	(13201)	-7	26-170	Rw	SUBSCRIBERS LINE CIRCUIT POSITIVE BATTERY METERING DOUBLE HOMING WITH SUBSCRIBERS DISCONNECT	
NOTE ON MI LEAD ADDED	(13201)	6	26-170	Rw		
SHEET 12 ADDED.	(89913)	5	24-0-64	PC		
SHEET 11 ADDED	(72284)	4	19-264	DBH		
SHEETS 15 & 16 ADDED	(63706)	9	27-2-81	JR		
NO CHANGE. SHTS. 13-14 AMENDED.	(13201)	8	26-170	Rw		
AMENDMENT PARTICULARS.				ISSUE	DATE	APP'D
N.Z.P.O.				DRAWN	CHECKED	WIRED
				ENG'RS	GBX 14790	
						SHEET 7-16



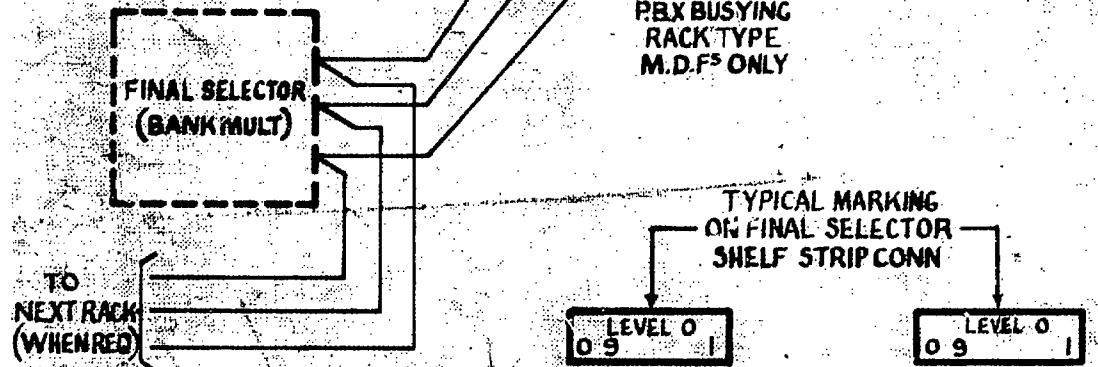


SUBSCRIBERS LINE CIRCUIT			
POSITIVE BATTERY METERING			
DOUBLE HOMING WITH			
SUBSCRIBERS DISCONNECT			
SHEETS 15 & 16 ADDED	(63706)	9	27.2.81 JR
NO CHANGE, SHTS 13-14 AMENDED	(13201)	8	26.1.70 RW.
	(79980)	2	19.6.63 DBX
AMENDMENT PARTICULARS	ISSUE	DATE	PAPER
NZ-PO	DRAWN	CHECKED	WIRING CIRCUIT

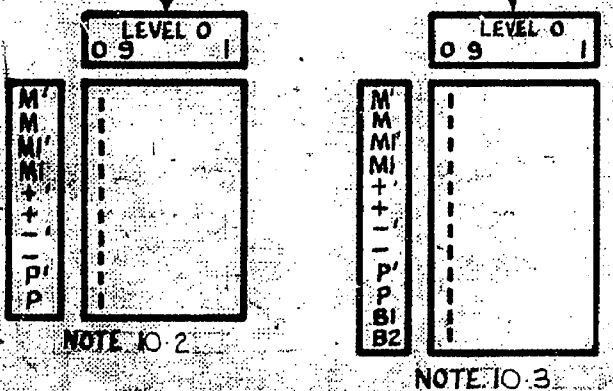
**GBX 14790**



**FIG 10** REGULAR & 2-10 P.B.X. SUBS  
(WITH I.D.F. FACILITIES ON F/SEL. RACK & I.D.F. BETWEEN T.D.F. & SELECTOR)



- NOTES:-**
- 10-1 FOR PBX BUSYING TRANSFER LINK FROM BI-B2 TO BI-P
  - 10-2 TAGLOCK FOR EXCHANGES HAVING FLOOR TYPE M.D.F'S
  - 10-3 TAGLOCK FOR ALL EXTENSIONS AND NEW WORK.

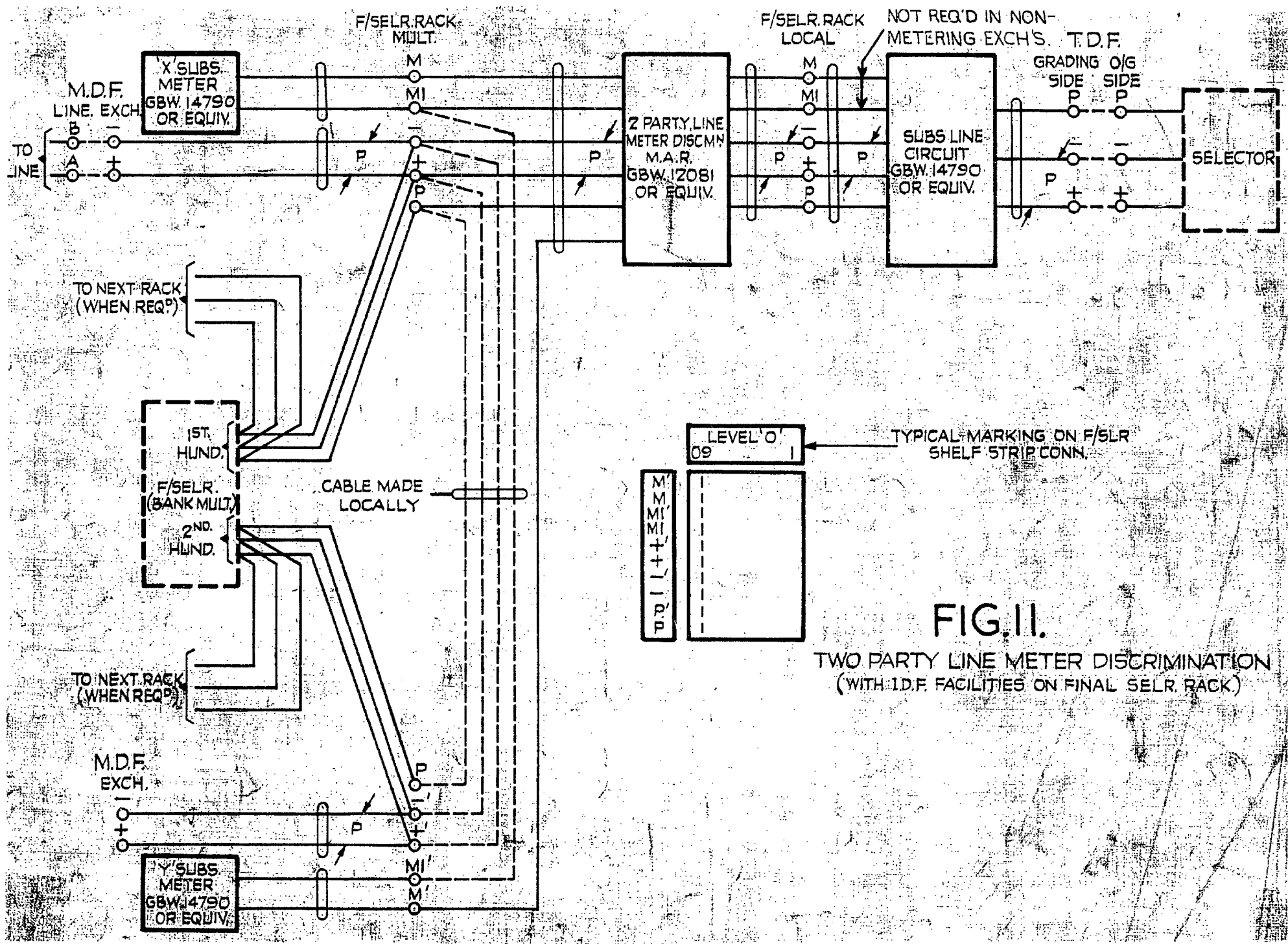


SHEETS 15 & 16 ADDED	(63706)	9	27-1-81	JR
NO CHANGE SHTS 15-14 AMENDED	(1320)	8	26-1-70	RW
NO CHANGE SHTS 7-8 AMENDED	(1320)	7	26-1-70	RW
NOTE ON MI&M LEADS ADDED	(1320)	6	26-1-70	RW
SHEET 12 ADDED	(89913)	5	24-9-64	WR
SHEET 11 ADDED	(72298)	4	19-2-64	DBR
	(74284)	3	12-7-63	DBR

AMENDMENT PARTICULARS	ISSUE	DATE	APP
DRAWN	CHECKED	WIRING	CIRCUIT

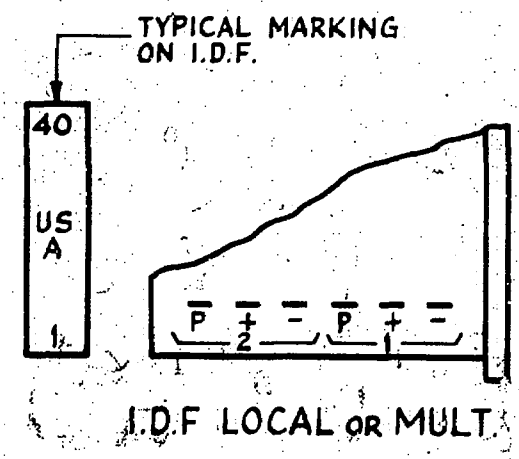
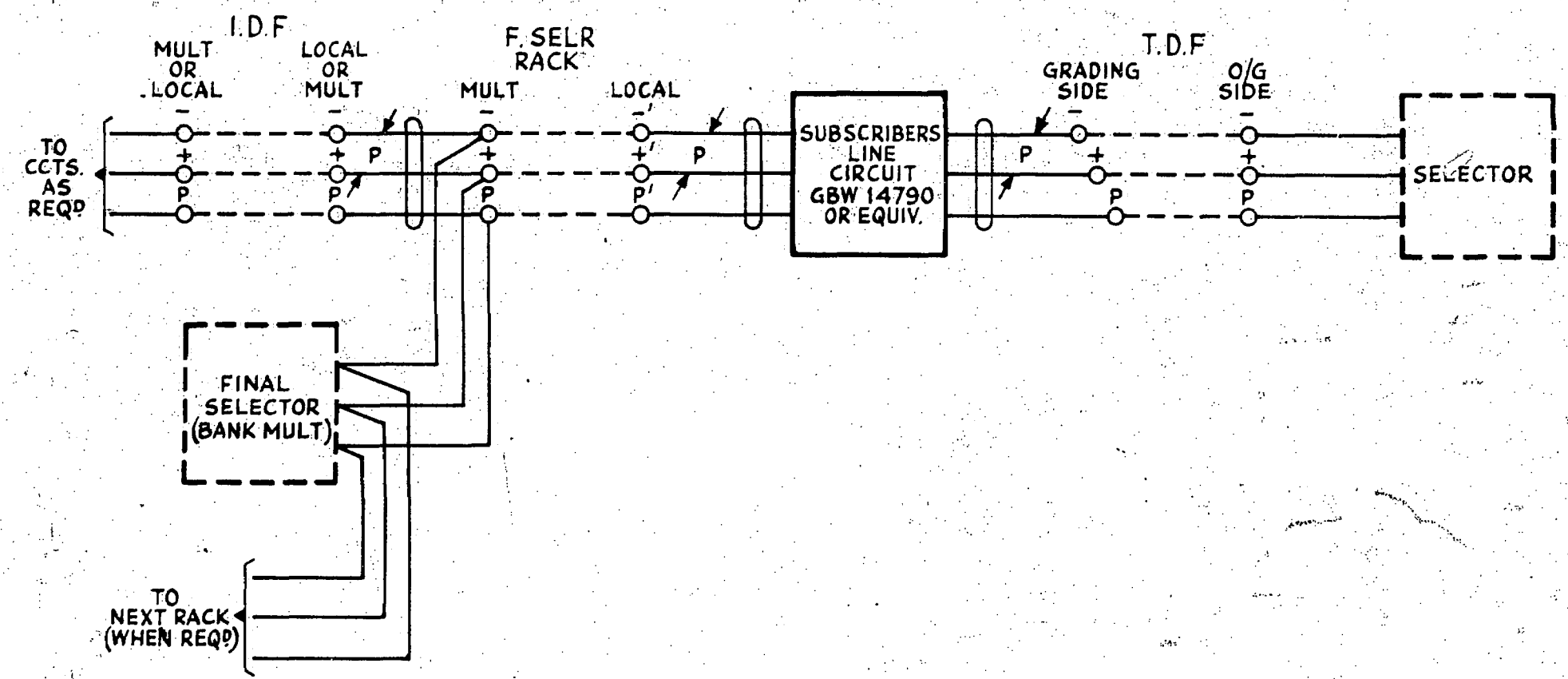
**SUBSCRIBERS LINE CIRCUIT  
POSITIVE BATTERY METERING  
DOUBLE HOMING WITH  
SUBSCRIBERS DISCONNECT**

**GBX14790**



**FIG. II.**  
TWO PARTY LINE METER DISCRIMINATION  
(WITH I.D.F. FACILITIES ON FINAL SELR RACK)

SHEETS 15 & 16 ADDED (23706)	9	27-2-81	JR	SUBSCRIBERS LINE CIRCUIT POSITIVE BATTERY METERING DOUBLE HOMING WITH SUBSCRIBERS DISCONNECT	
NO CHANGE SHTS 13-14 AMENDED (1320)	8	26-1-70	EW		
NO CHANGE SHTS 7-8 AMENDED (1320)	7	26-1-70	EW		
NOTE ON M&M LEADS ADDED (1320)	6	26-1-70	KW		
SHEET 12 ADDED (89913)	5	24-9-64	MF		
		(72295)	4	13-2-64	ORR
AMENDMENT PARTICULARS		IS	LE	DATE	APP
				<b>GBX 14790</b>	
				SHEET 11-16	



**FIG. 12**  
REGULAR & 2-10 P.BX SUBS.  
(WITH DIRECT CONNECTION BETWEEN  
F/S STRIP CONN (MULT) & I.D.F)

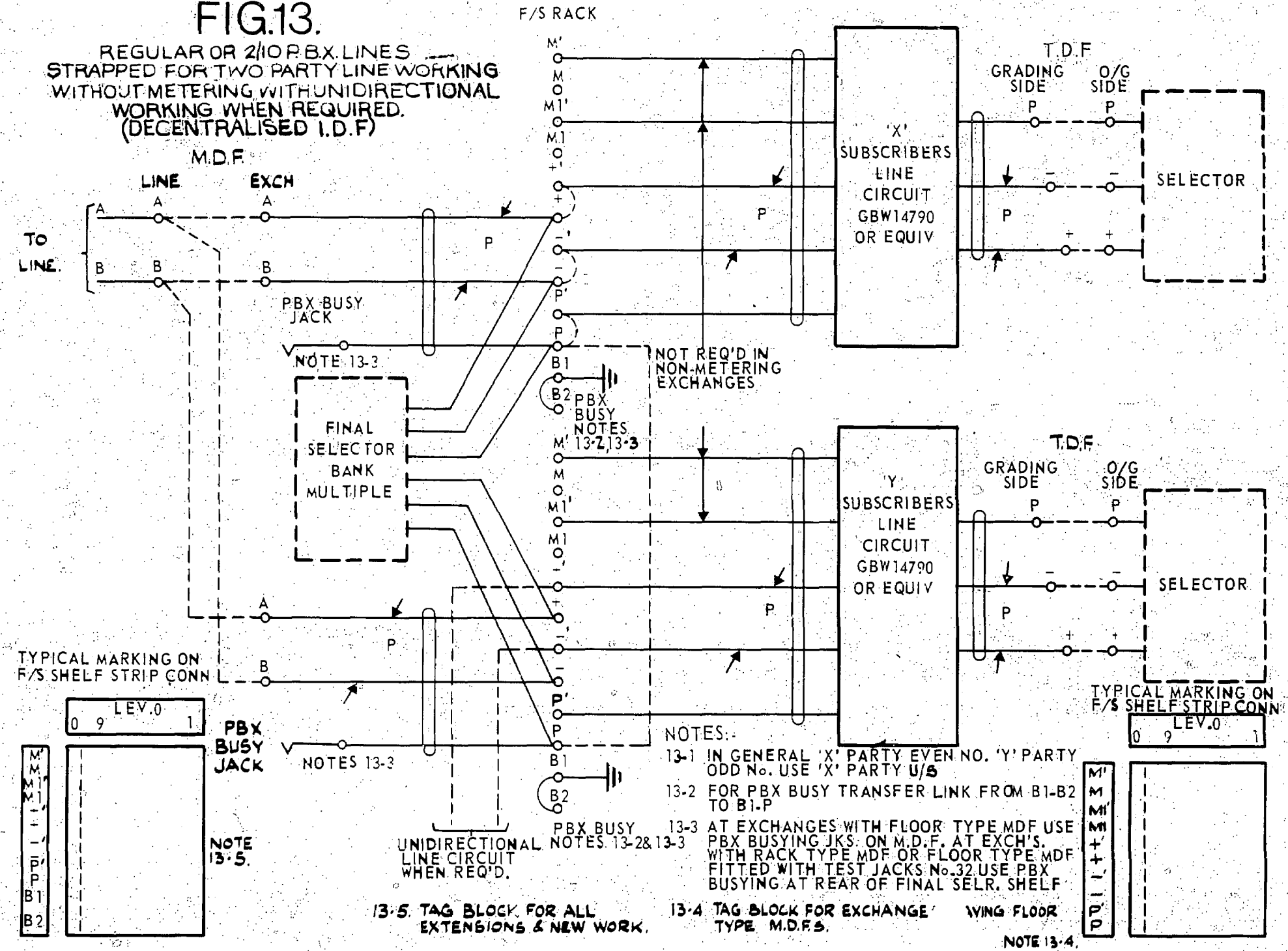
SHEETS 15 & 16 ADDED (63706)			9	27-2-8.	JR	
NO CHANGE. SHTS. 13-14 AMENDED (13201)			8	26-1-70	Rw.	
NO CHANGE. SHTS. 7-8 AMENDED (13201)			7	26-1-70	Rw.	
NO CHANGE. ADVANCE IN ISSUE ONLY (13201)			6	26-1-70	Rw.	
			(39913)	5	24-9-64	vc
AMENDMENT PARTICULARS			ISSUE	DATE	APP.	
NZ.P.O.		DRAWN	CHECKED	WIRING	ENGINEER	

**SUBSCRIBERS LINE CIRCUIT  
POSITIVE BATTERY METERING  
DOUBLE HOMING WITH  
SUBSCRIBER DISCONNECT**

**GBX 14790** SHEET 12/16

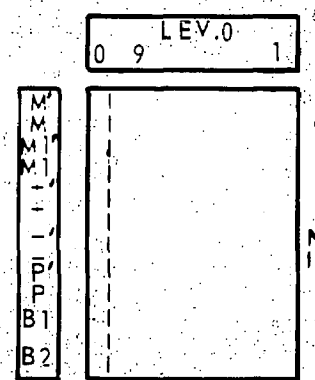
**FIG.13.**

REGULAR OR 2/10 P.B.X. LINES STRAPPED FOR TWO PARTY LINE WORKING WITHOUT METERING WITH UNIDIRECTIONAL WORKING WHEN REQUIRED. (DECENTRALISED I.D.F)

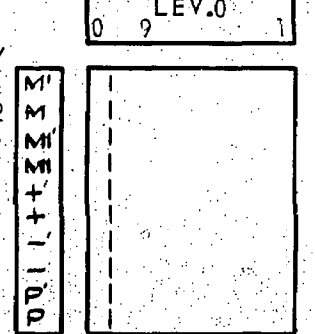


- NOTES:-
- 13-1 IN GENERAL 'X' PARTY EVEN NO. 'Y' PARTY ODD No. USE 'X' PARTY U/S
  - 13-2 FOR PBX BUSY TRANSFER LINK FROM B1-B2 TO B1-P
  - 13-3 AT EXCHANGES WITH FLOOR TYPE MDF USE PBX BUSYING JKS. ON M.D.F. AT EXCH'S. WITH RACK TYPE MDF OR FLOOR TYPE MDF FITTED WITH TEST JACKS No.32 USE PBX BUSYING AT REAR OF FINAL SELR. SHELF
  - 13-4 TAG BLOCK FOR EXCHANGE WING FLOOR TYPE M.D.F.S. NOTE 13-4.
  - 13-5 TAG BLOCK FOR ALL EXTENSIONS & NEW WORK.

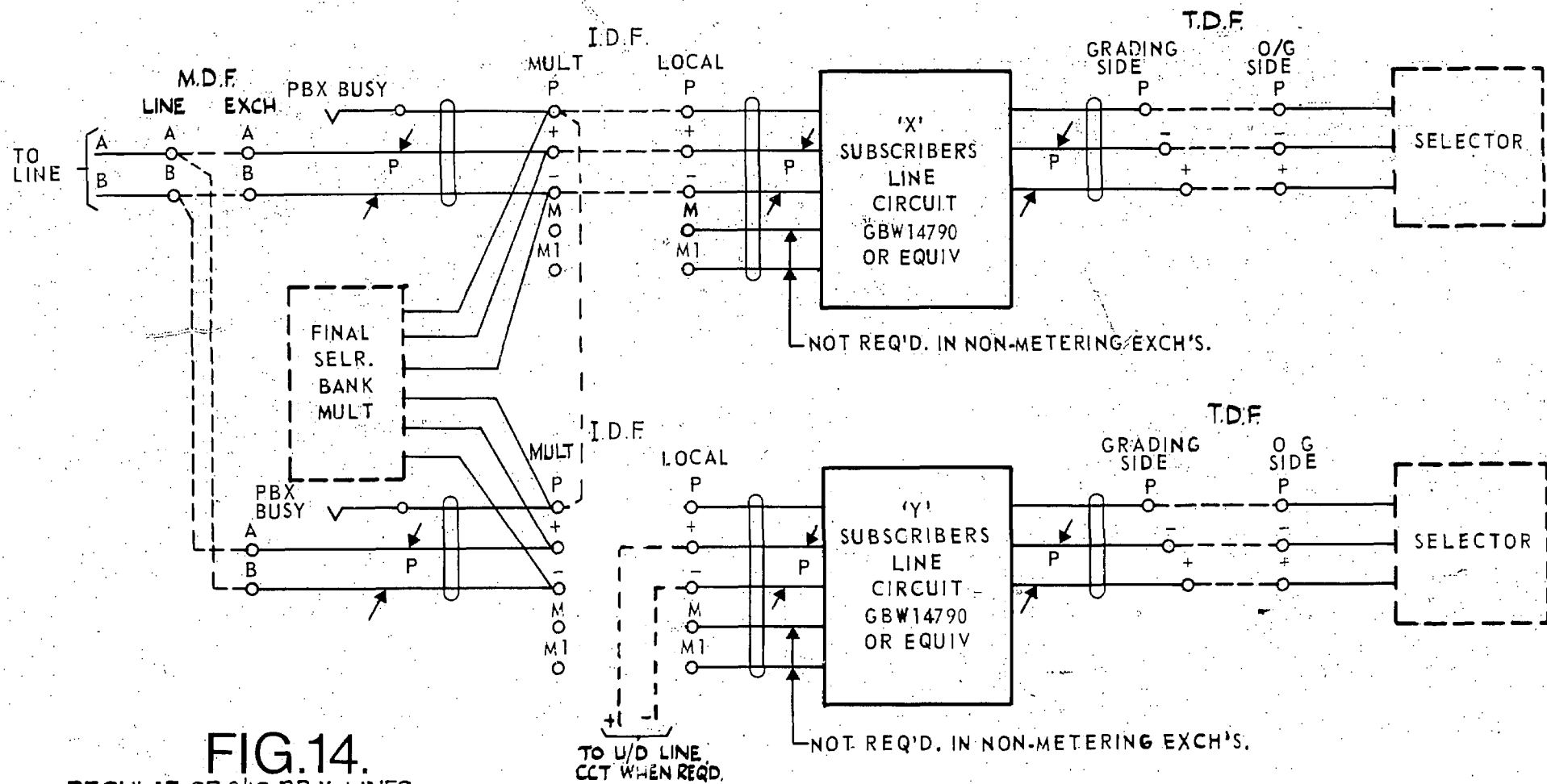
TYPICAL MARKING ON F/S SHELF STRIP CONN



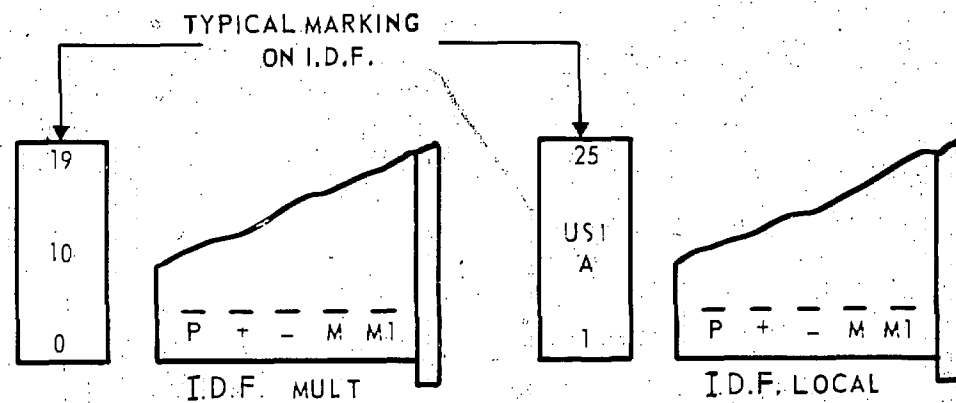
TYPICAL MARKING ON F/S SHELF STRIP CONN



				SUBSCRIBERS LINE CIRCUIT POSITIVE BATTERY METERING DOUBLE HOMING WITH SUBSCRIBERS DISCONNECT			
SHEETS 15 & 16 ADDED (63706)		9	27-2-81	JR			
FIG.13. TITLE AMENDED. (13201)		8	23-1-70	Rw			
		7					
AMENDMENT PARTICULARS			ISSUE	DATE	APPD		
N.Z.P.Q.		DRAWN DS BN	CHKD	WIRING	ENGRS	GBX 14790	
						SHEET 13-16	

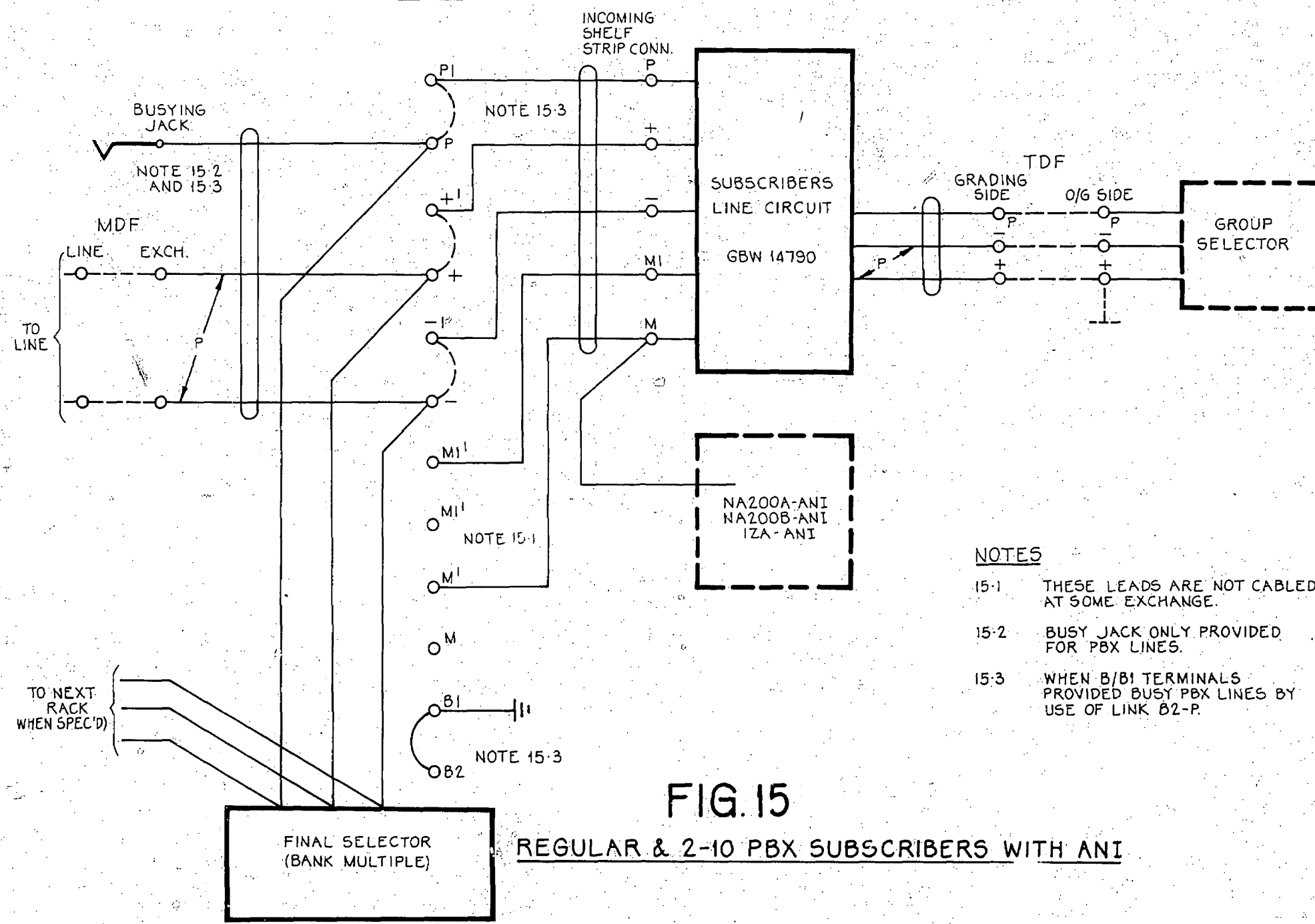


**FIG.14.**  
 REGULAR OR 2/10 P.B.X. LINES  
 STRAPPED FOR TWO PARTY LINEWORKING  
 WITHOUT METERING WITH UNIDIRECTIONAL  
 WORKING WHEN REQUIRED  
 (CENTRALISED I.D.F.)



				SUBSCRIBERS LINE CIRCUIT POSITIVE BATTERY METERING DOUBLE HOMING WITH SUBSCRIBERS DISCONNECT			
SHEETS 15 & 16 ADDED (63706)				9	27-2-81	JR	
FIG.14 TITLE AMENDED (13201)				8	26-1-70	AW	
AMENDMENT PARTICULARS				ISSUE	DATE	APPD	REF -
NZ.P.O.				DRAWN DS BN	CHKD	WIRING CIRCUIT	GBX 14790
				SHEET 14-16			

FINAL SELECTOR RACK

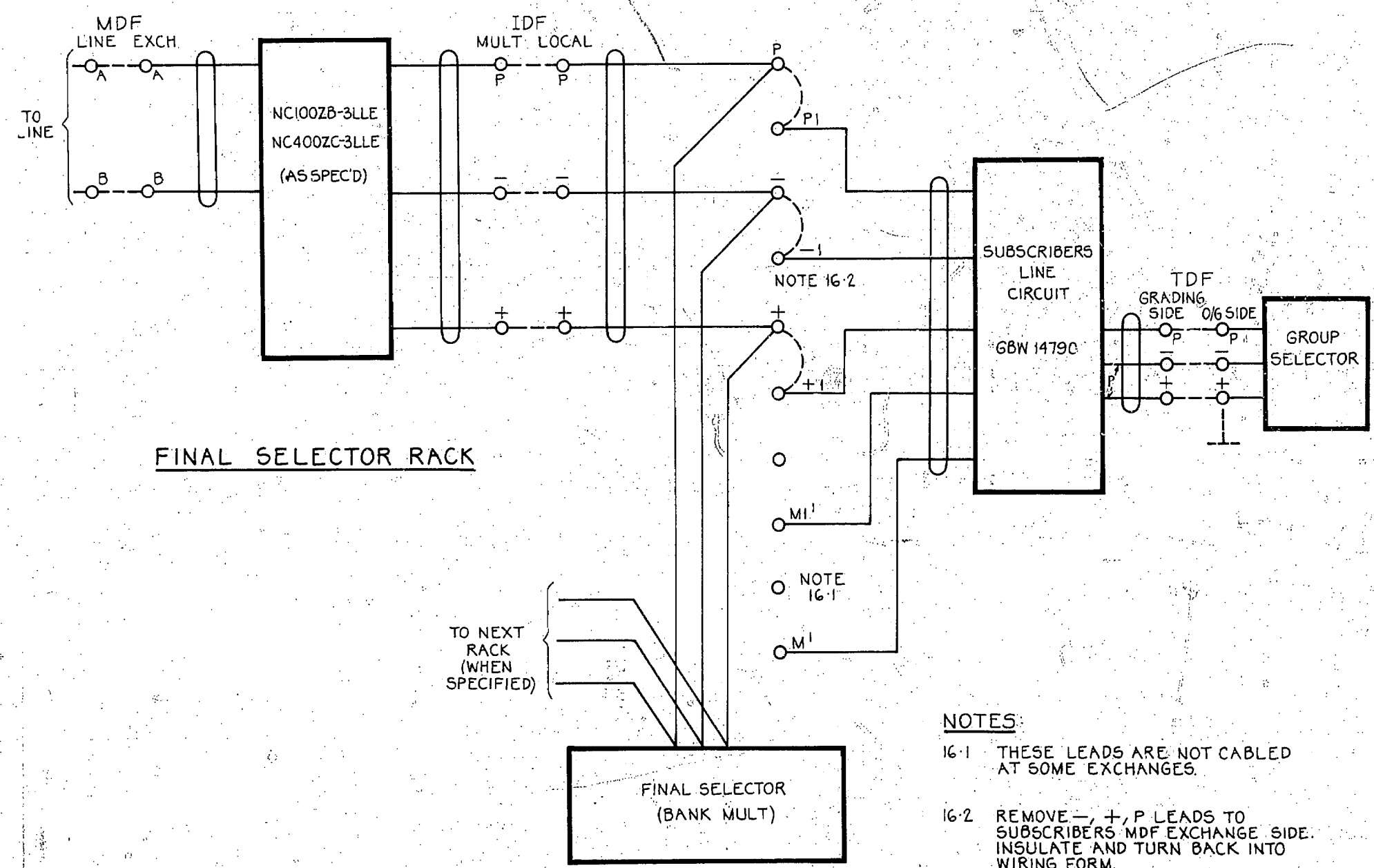


- NOTES**
- 15-1 THESE LEADS ARE NOT CABLED AT SOME EXCHANGE.
  - 15-2 BUSY JACK ONLY PROVIDED FOR PBX LINES.
  - 15-3 WHEN B/B1 TERMINALS PROVIDED BUSY PBX LINES BY USE OF LINK B2-P.

**FIG. 15**  
REGULAR & 2-10 PBX SUBSCRIBERS WITH ANI

SUBSCRIBERS LINE CIRCUIT POSITIVE BATTERY METERING DOUBLE HOMING WITH SUBSCRIBERS DISCONNECT			
(63706)	9	27-2-81	JR
AMENDMENT PARTICULARS	ISS	DATE	APD
			50V H
N.Z.P.O.	DRAWN	CHECKED	WIRING CIRCUIT
			<b>GBX 14790</b>
SHEET 15-16			

UD 235



- NOTES:**
- 16-1 THESE LEADS ARE NOT CABLED AT SOME EXCHANGES.
  - 16-2 REMOVE -, +, P LEADS TO SUBSCRIBERS MDF EXCHANGE SIDE. INSULATE AND TURN BACK INTO WIRING FORM.

**FIG.16**  
**REGULAR SUBSCRIBER WITH NEC LLE**

				SUBSCRIBERS LINE CIRCUIT			
				POSITIVE BATTERY METERING			
				DOUBLE HOMING WITH			
				SUBSCRIBERS DISCONNECT			
				(G3706)	9	27.2.81	JR
AMENDMENT PARTICULARS				155	DATE	APD	50V H
N.Z.P.O.				DRAWN	CHECKED	WIRING	CIRCUIT
				<b>GBX 14790</b>			
				SHEET 16-16			

UD 235