

**FIG. A. U/D & B/W D.C. JUNCTIONS.**  
(EXCHS WITH MANIDE) MAN IDF LOCAL

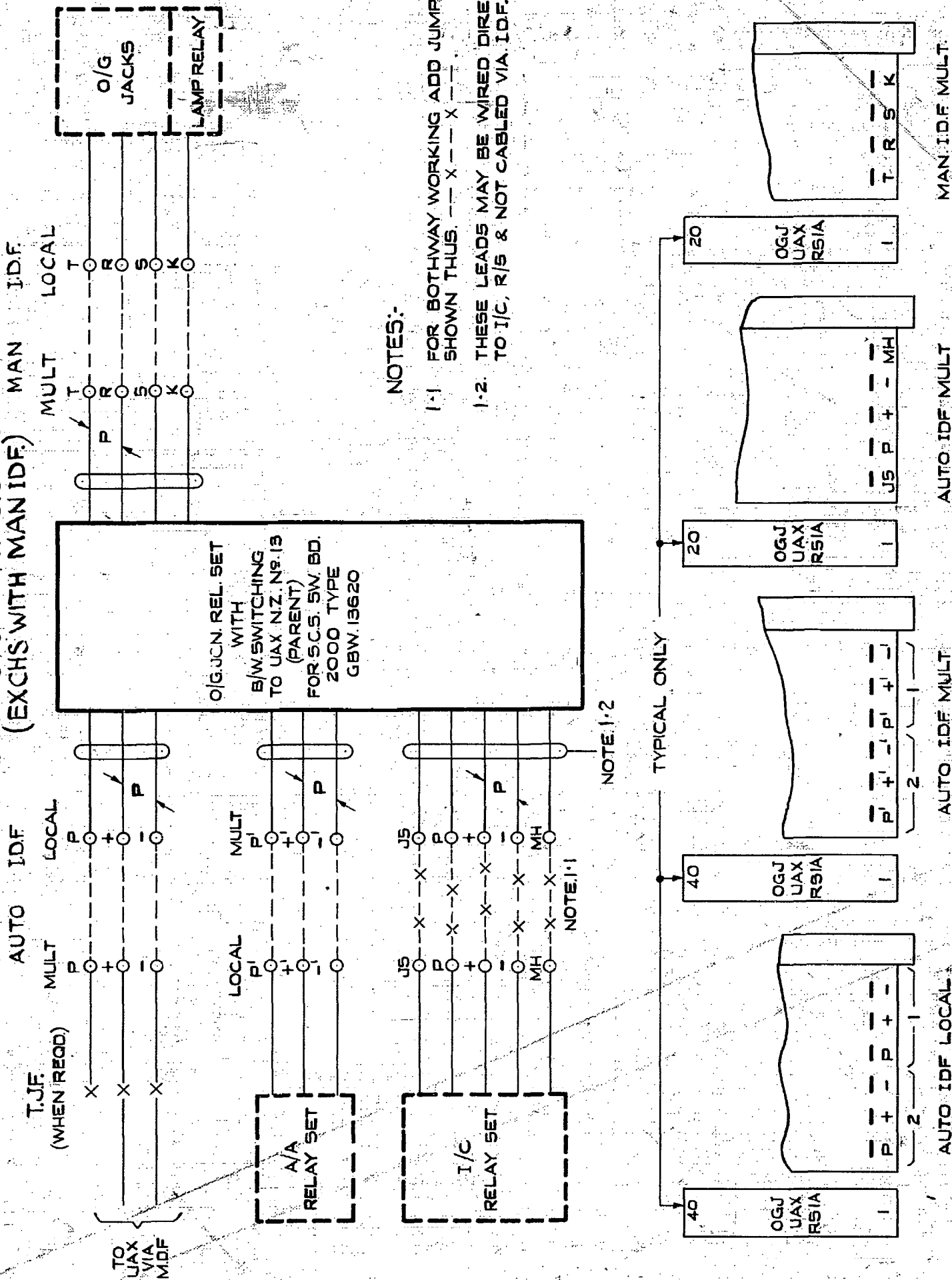


FIG A TITLE AMENDED: SHEETS 3 & 4 ADDED (72847)	5	4-5-64	DBH
SEE SHEET 2 FOR CHANGE	4		
SHEET 2 ADDED	3		
REVISED & REDRAWN	2		
AMENDMENT PARTICULARS	ISSUE	DATE	APPD.
NZPO	DRAWN	CHECKED	WIRING CIRCUIT

O/G JUNCTION RELAY SET WITH BOTHWAY SWITCHING TO UAX N.Z. N° 13 (PARENT) FOR S.C.S. SWITCH BOARD 2000 TYPE

REF: G5.3 21.17

**GBX. 13620.**

SHT. 1-4

**FIG. B. U/D & B/W I.V.F. JUNCTIONS  
(EXCHS WITH MAN.IDF.)**

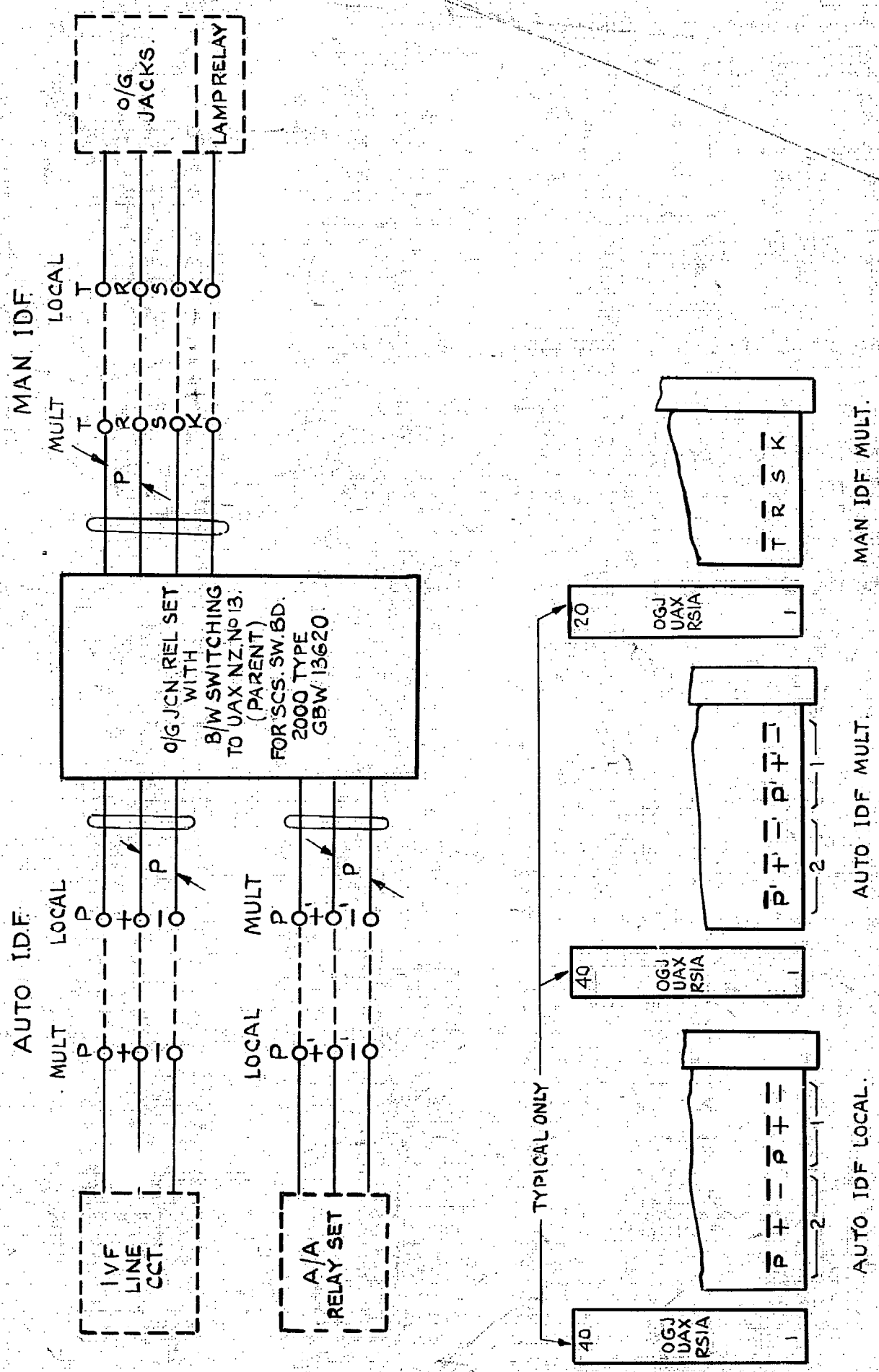
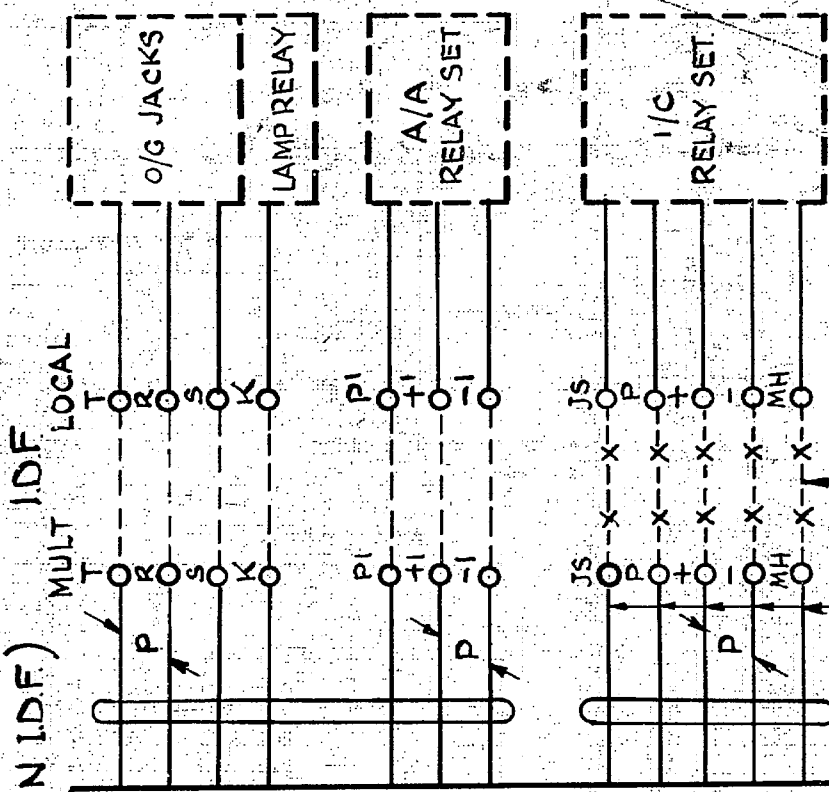


FIG B TITLE AMENDED. SHEETS 3 & 4 ADDED (72847)				5.	4-5-64	gdn
IVF LINE CCT CONN WAS SHOWN T.J.F. FIG B WAS B/W ONLY				4.		
				3.		
AMENDMENT PARTICULARS				ISSUE	DATE	APPD
NZPO		DRAWN	CHECKD	WIRING	CIRCUIT	

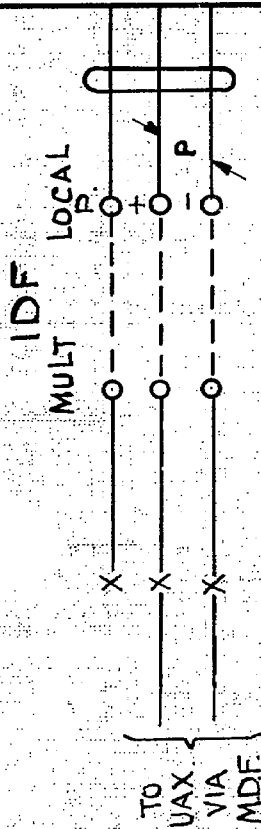
O/G JUNCTION RELAY SET WITH BOTHWAY SWITCHING TO UAX.NZ.NO.13 (PARENT) FOR SCS. SWITCH BOARD. 2000 TYPE.

REF GS3 21.17 50V W  
**GBX 13620.**  
SHT.2-4

FIG. C. U/D & B/W DC JUNCTIONS  
(EXCHS W/O MAN. IDF)

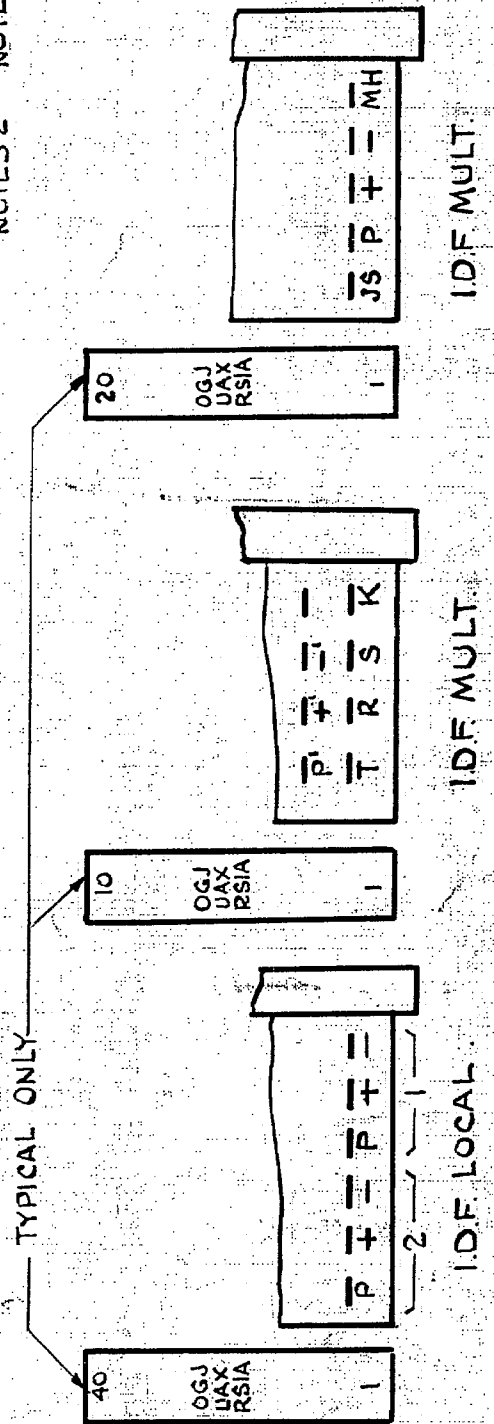


O/G JCI REL SET WITH B/W SWITCHING TO UAX NZ NO 13 (PARENT) FOR SCS SW BD 2000 TYPE GBW 13620



NOTES 3:2 NOTE 3:1

NOTES:  
3:1 FOR BOTHWAY WORKING ADD JUMPERS SHOWN THUS --X--X--X  
3:2 THESE LEADS MAY BE WIRED DIRECT TO I/C R/S AND NOT CABLED VIA IDF.



NZPO								
		DRAWN	CHECKD	WIRING	CIRCUIT			

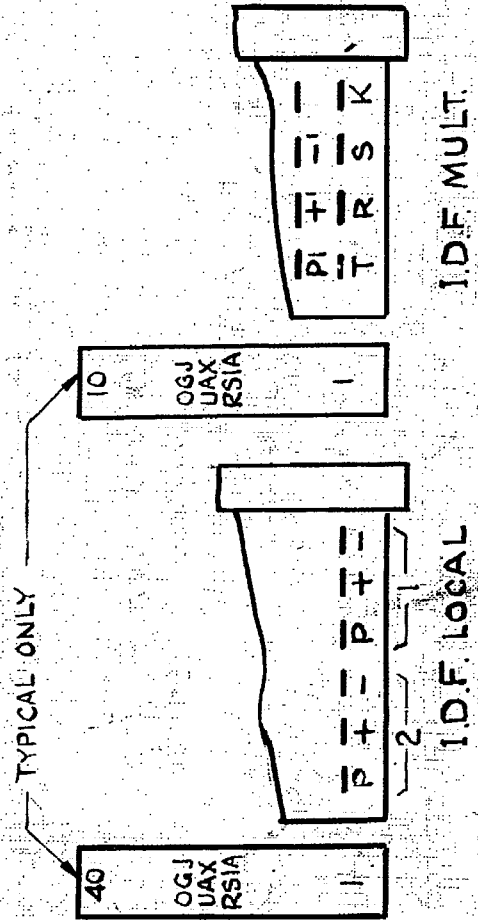
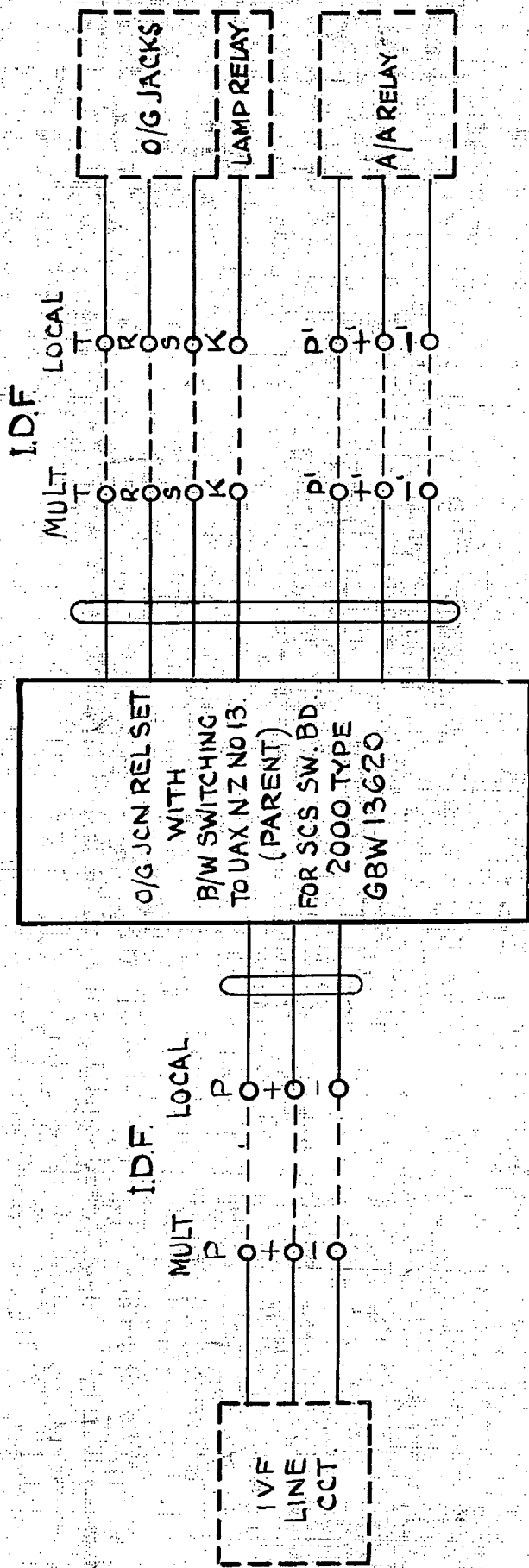
O/G JUNCTION RELAY SET WITH BOTHWAY SWITCHING TO UAX NZ NO.13. (PARENT) FOR SCS SWITCH BOARD. 2000 TYPE

AMENDMENT PARTICULARS ISSUE DATE APPD. REF. GS3 21.17.

GBX. 13620.

SH 3-4.

FIG.D. U/D & B/W I/V F JUNCTIONS.  
(EXCHS W/O MAN I.D.F.)



					O/G JUNCTION RELAY SET WITH BOTHWAY SWITCHING TO UAX NZ NO 13 (PARENT) FOR SCS SWITCH BOARD 2000 TYPE				
(72847)					5	4-5-64	DBN		
AMENDMENT PARTICULARS					ISSUE	DATE	APPD	REF G.S. 3 21.17	W
NZ PO					DRAWN	CHECKED	WIRING	CIRCUIT	GBX 13620.
									SH 4-4