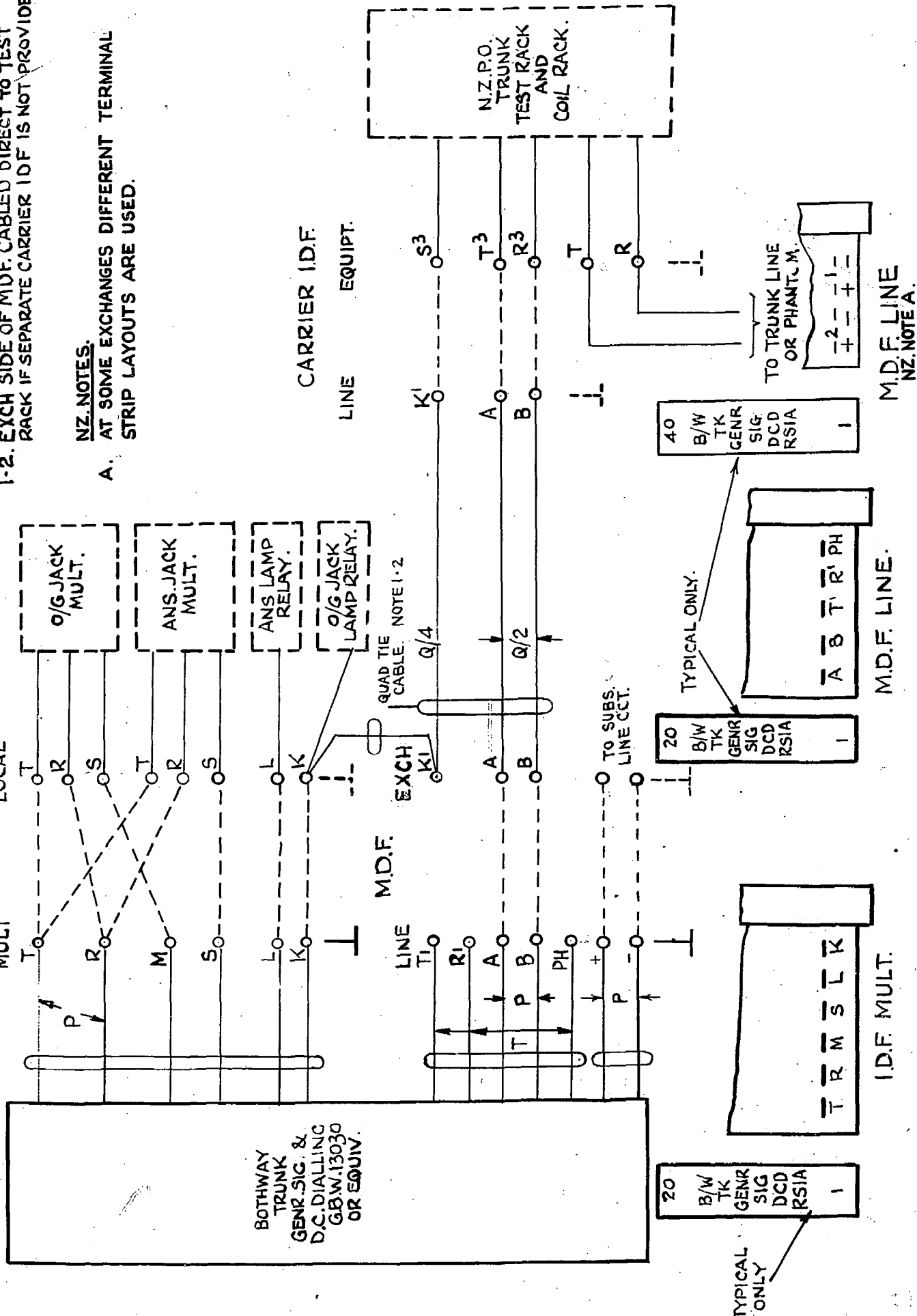


FIG. A. (NOTE 1-1)

NOTES. 1-1. FOR METALLIC GENR. SIGNALLING AND D.C. DIALLING CIRCUITS, OR FOR PHANTOM GENR. SIGNALLING AND D.C. DIALLING CIRCUITS.
 1-2. EXCH SIDE OF MDF. CABLED DIRECT TO TEST RACK IF SEPARATE CARRIER IDF IS NOT PROVIDED.

NZ. NOTES.
 A. AT SOME EXCHANGES DIFFERENT TERMINAL STRIP LAYOUTS ARE USED.



NZ. NOTE A. ADDED.	(30251)	6A	14-2-72	BS-H
LINE CCT. TERMINATIONS ADDED.	(30251)	6	14-2-72	BS-H.
TI & RI WERE SHOWN AS A PAIR TO MDF LINE SIDE.		5	11-10-63	D.B.H.
SHEET 4 ADDED.		4	28-2-61	G.G.H.
TERMINATIONS CHANGED TO CONFORM TO TR 1039. NOTE 1-2 ADDED. CABLING OF A AND B TERMINALS CORRECTED.		3	18-11-60	J.R.
CARRIER CABLING WAS SHOWN TO TK IDF LOCAL.		2	24-5-55	K.W.H.

S.C.S.
 BOTHWAY TRUNK
 GENERATOR SIGNALLING
 AND D.C. DIALLING
 PAD CONTROL 2000 TYPE

AMENDMENT PARTICULARS		ISSUE	DATE	APPD	W
NZ.P.O.	D.S.	DRAWN	CHECKED	WIRING	CIRCUIT.

GBX 13030

SHT 1-4

RE/AE/31 8-12-71

FIG. B.

NOTES

2-1 FOR GENR. SIGNALLING TRUNK LINE WITH D.C. DIALLING USE JUMPERS SHOWN THUS -----

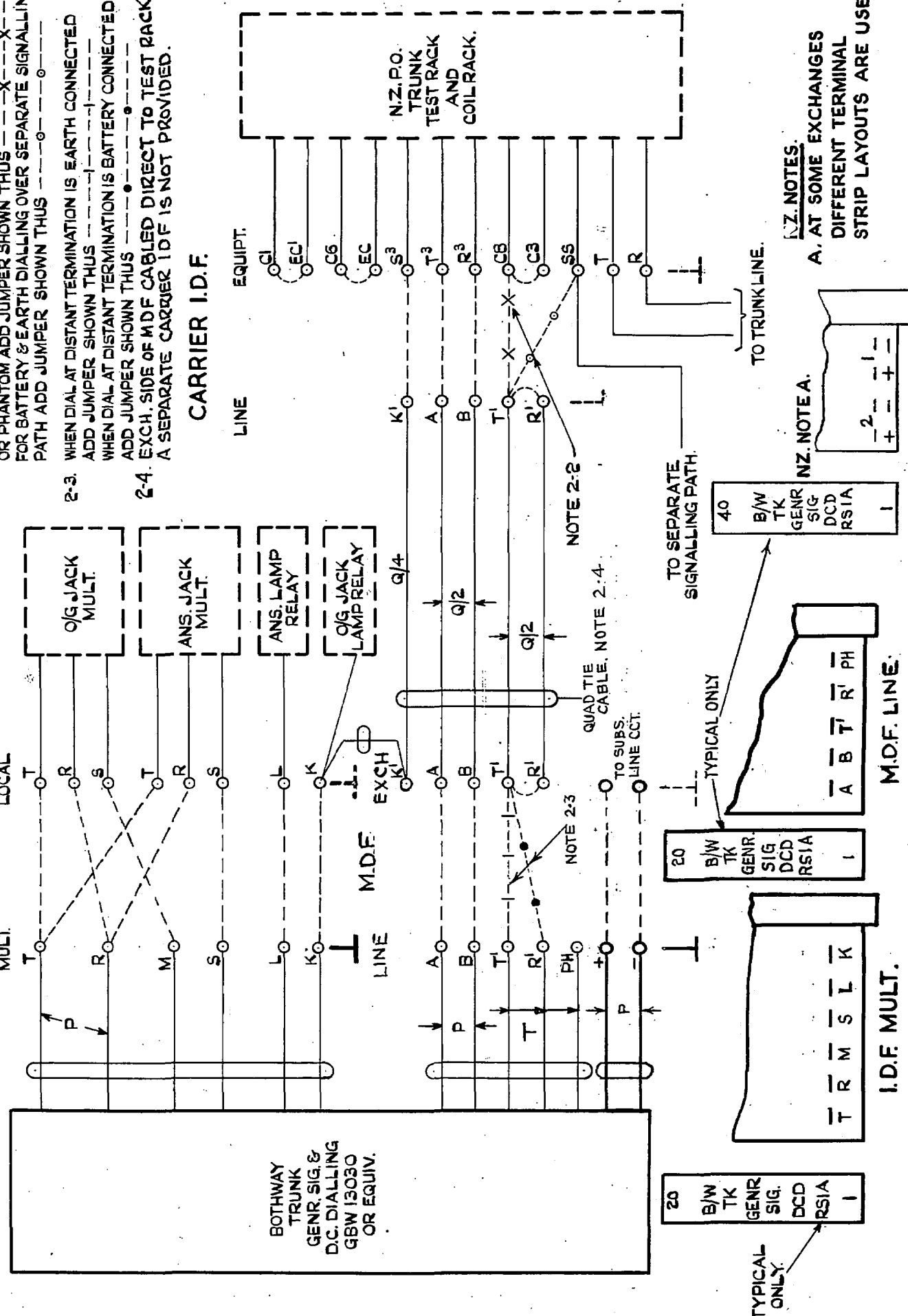
2-2 FOR SIMPLEX BATTERY OR EARTH DIALLING OVER METALLIC OR PHANTOM ADD JUMPER SHOWN THUS ---X---
 FOR BATTERY & EARTH DIALLING OVER SEPARATE SIGNALLING PATH ADD JUMPER SHOWN THUS ---o---

2-3 WHEN DIAL AT DISTANT TERMINATION IS EARTH CONNECTED ADD JUMPER SHOWN THUS ---|---
 WHEN DIAL AT DISTANT TERMINATION IS BATTERY CONNECTED ADD JUMPER SHOWN THUS ---o---

2-4 EXCH. SIDE OF MDF CABLED DIRECT TO TEST RACK IF A SEPARATE CARRIER IDF IS NOT PROVIDED.

CARRIER I.D.F.

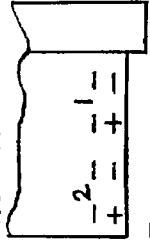
MANUAL I.D.F.



N.Z. NOTES.

A. AT SOME EXCHANGES DIFFERENT TERMINAL STRIP LAYOUTS ARE USED.

N.Z. NOTE A.



M.D.F. LINE

M.D.F. LINE

I.D.F. MULT.

NZ. NOTE A. ADDED.	(30251)	6A	14.2.72	B.S.-H.
LINE CCT. TERMINATIONS ADDED.	(30251)	6	14.2.72	B.S.-H.
TI & RI WERE SHOWN AS A PAIR TO M D F LINE SIDE		5.	11.10.63	D.B.H.
SEE SHEET 1 FOR CHANGE.		4.	28.2.61	C.G.H.
TERMINATIONS CHANGED TO CONFORM TO TR1039	NOTE 2-4 ADDED	3.	18.11.60	J.R.
CARRIER CABLING WAS SHOWN TO TK. I.D.F. LOCAL		2.	24.5.55	K.W.H.

AMENDMENT PARTICULARS.	ISSUE.	DATE.	APPD.
------------------------	--------	-------	-------

S. C. S.
BOTHWAY TRUNK
GENERATOR SIGNALLING
AND D.C. DIALLING
PAD CONTROL 2000 TYPE.

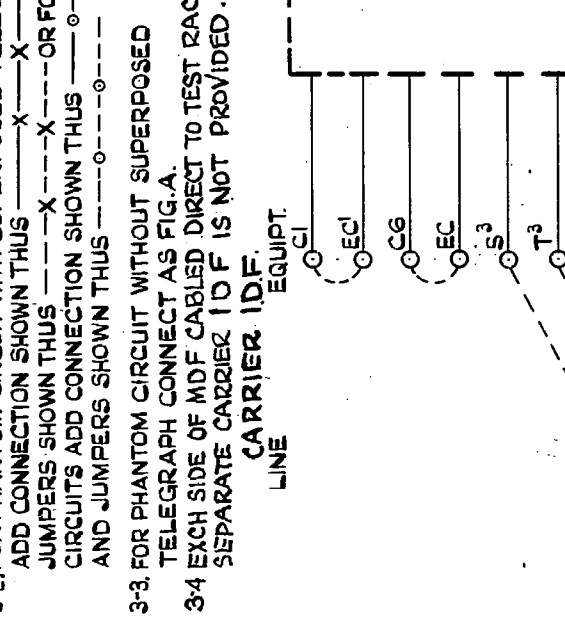
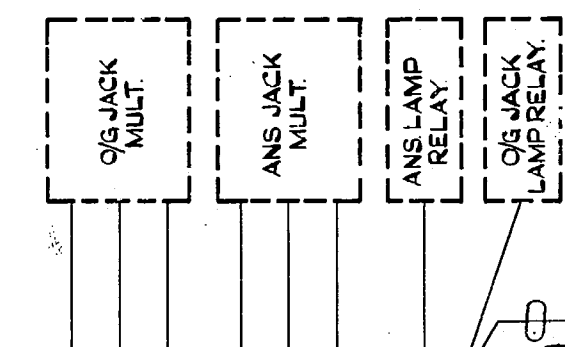
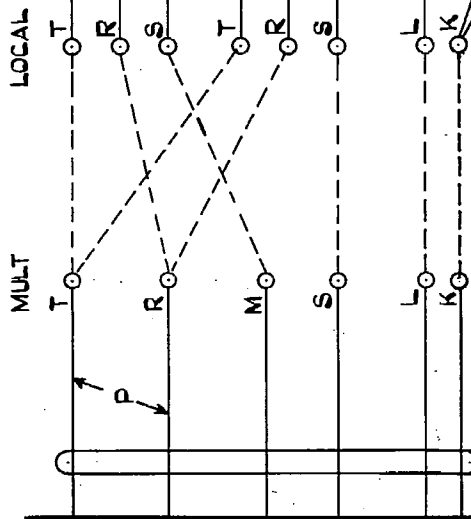
N.Z.P.O.	DRAWN. D.S.	CHECKD.	WIRING.	CIRCUIT.
-----------------	--------------------	----------------	----------------	-----------------

GBX. 13030 **SHT. 2-4**

FIG.C.

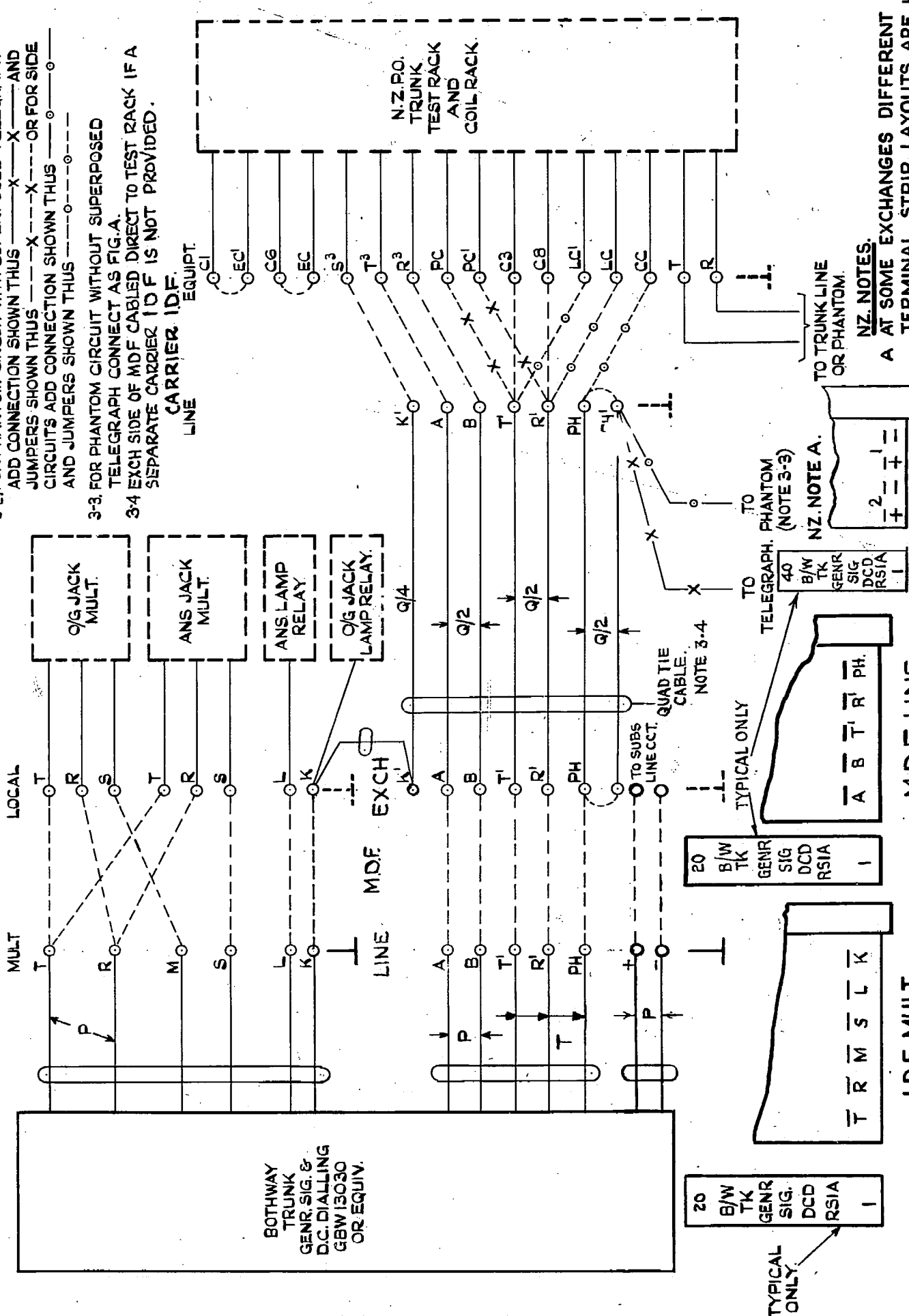
(NOTES 3-1, 3-2, 3-3)

MANUAL I.D.F.



NOTES

- 3-1. FOR PHANTOM CONNECTED GENR. SIGNALLING TRUNK LINE WITH D.C. DIALLING USE JUMPERS SHOWN THUS ---X--- AND ADD CONNECTION SHOWN THUS ---X---X--- OR FOR SIDE JUMPERS SHOWN THUS ---X---X--- OR FOR SIDE CIRCUITS ADD CONNECTION SHOWN THUS ---O--- AND JUMPERS SHOWN THUS ---O---
- 3-2. FOR PHANTOM CIRCUIT WITH SUPERPOSED TELEGRAPH. TELEGRAPH CONNECT AS FIG.A.
- 3-3. FOR PHANTOM CIRCUIT WITHOUT SUPERPOSED TELEGRAPH CONNECT AS FIG.A.
- 3-4. EXCH SIDE OF MDF CABLED DIRECT TO TEST RACK IF A SEPARATE CARRIER IDF IS NOT PROVIDED.



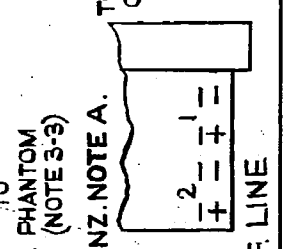
N.Z. NOTE A. ADDED.	(30251)	6A	14-2-72	B.S.H.
LINE CCT. TERMINATIONS ADDED.	(30251)	6	14-2-72	B.S.H.
TI & RI WERE SHOWN AS A PAIR TO MDF LINE SIDE		5	11-10-63	D.B.H.
SEE SHEET I FOR CHANGE.		4	28-2-61	C.G.H.
TERMINATIONS CHANGED TO CONFORM TO TRI039	NOTE 3-4 ADDED	3	18-11-60	J.R.
CARRIER CABLING WAS SHOWN TO TK. I.D.F. LOCAL		2	24-5-55	K.W.H.
		1		

S. C. S.
**BOTHWAY TRUNK
 GENERATOR SIGNALLING
 AND D.C. DIALLING
 PAD CONTROL 2000 TYPE.**

AMENDMENT PARTICULARS.		ISSUE	DATE	APPD.
N.Z.P.O.		DRAWN D.S.	CHECKED	WIRING
				CIRCUIT

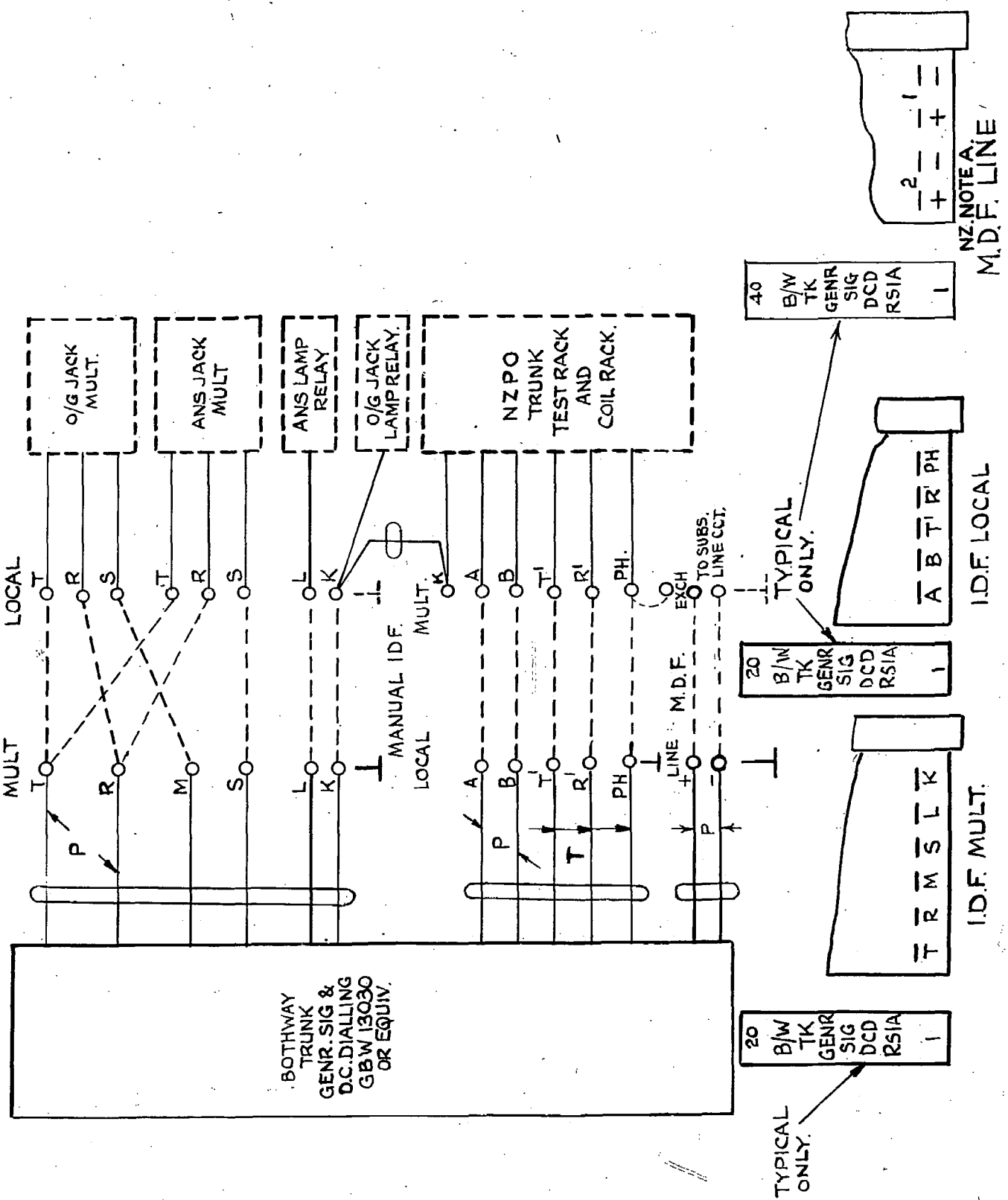
GBX. 13030.
 SHT. 3-4.
 REL/AE/31 8-12-71

NZ. NOTES.
 A AT SOME EXCHANGES DIFFERENT TERMINAL STRIP LAYOUTS ARE USED



FIGD.

NZ. NOTES.
A AT SOME EXCHANGES DIFFERENT
TERMINAL STRIP LAYOUTS ARE USED.



AMENDMENT PARTICULARS		ISSUE	DATE	APPD.	
N.Z.P.O.		DRAWN	CHECK'D	WIRING.	CIRCUIT.
				<i>tan.</i>	<i>8/10</i>

S.C.S. BOTHWAY TRUNK GENERATOR SIGNALLING AND D.C. DIALLING. PAD CONTROL. 2000 TYPE.				
NZ. NOTE A. ADDED. (30251)		6A	14-2-71	B.S.H.
LINE CCT. TERMINATIONS ADDED. (30251)		6	14-2-72	B.S.H.
TI & RI WERE SHOWN AS A PAIR TO MDF LINE SIDE.		5	11-10-63	D.B.H.
		4	28-2-61	C.G.H.
GBX 13030.				SHT. 4-4

RE/AE/131 8-12-71

NZ. NOTE A.
M.D.F. LINE