

FIG. A

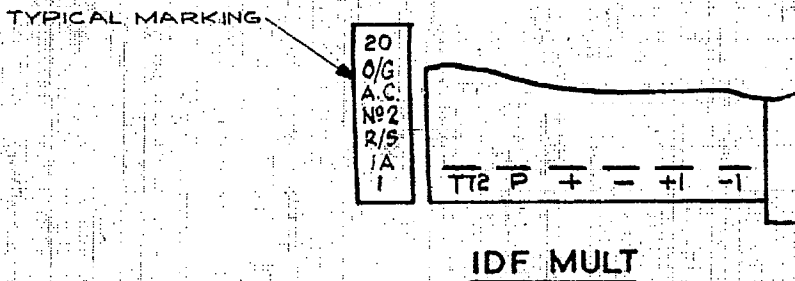
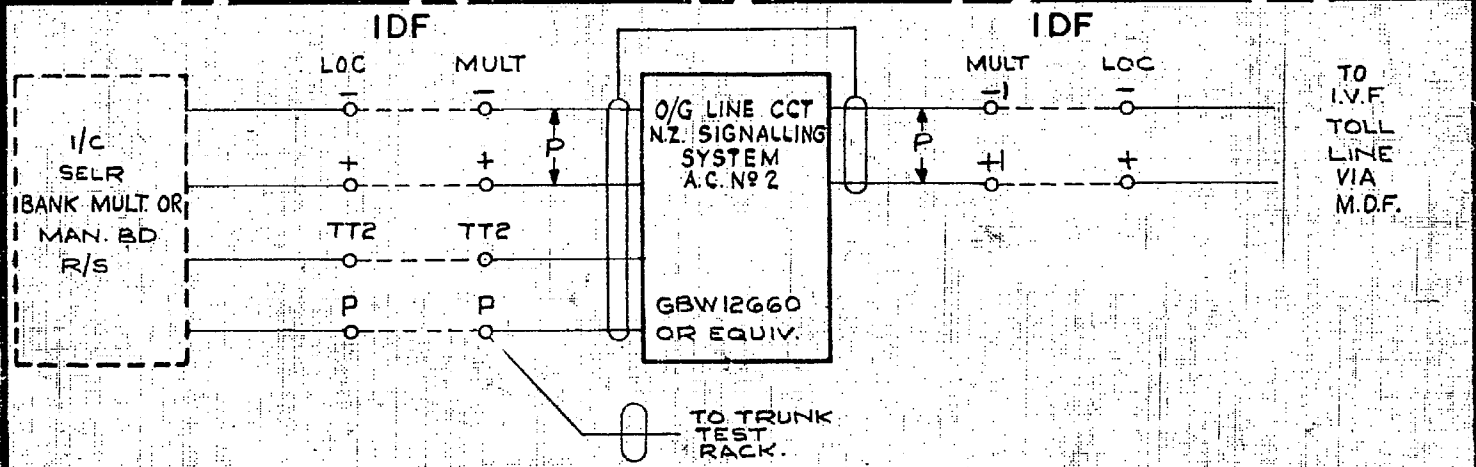


FIG. B

ISSUE ADVANCED NO CHANGE	(13727)	5	1-12-70	B.S.H.
ISSUE ADVANCED NO CHANGE	(86169)	4	28-10-69	RW
TITLE AMENDED: 12661 ADDED	(69332)	3	17-10-69	DBH
MINOR AMENDMENTS	(41080)	2	2-2-61	ASB
	(35370)	1	10-11-60	SK
AMENDMENT PARTICULARS		ISSUE	DATE	APP
N.Z. P.O.	DRAWN	CHECKED	WIRING	CIRCUIT
	490	490		ASB

O/G LINE CIRCUIT
N.Z. SIGNALLING SYSTEM
A.C. No 2

GBX 12660
12661 SHEET 1-2

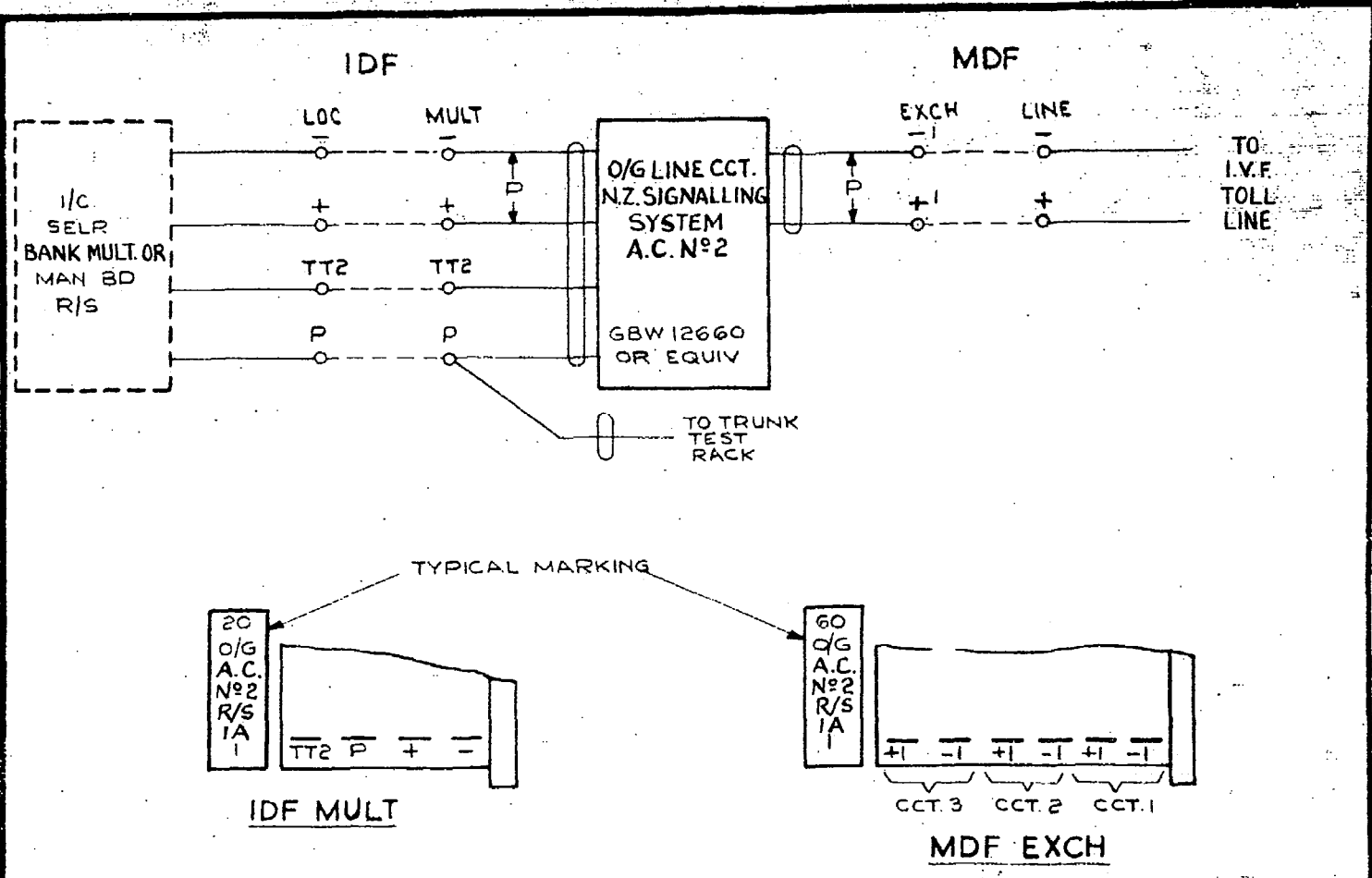


FIG. C

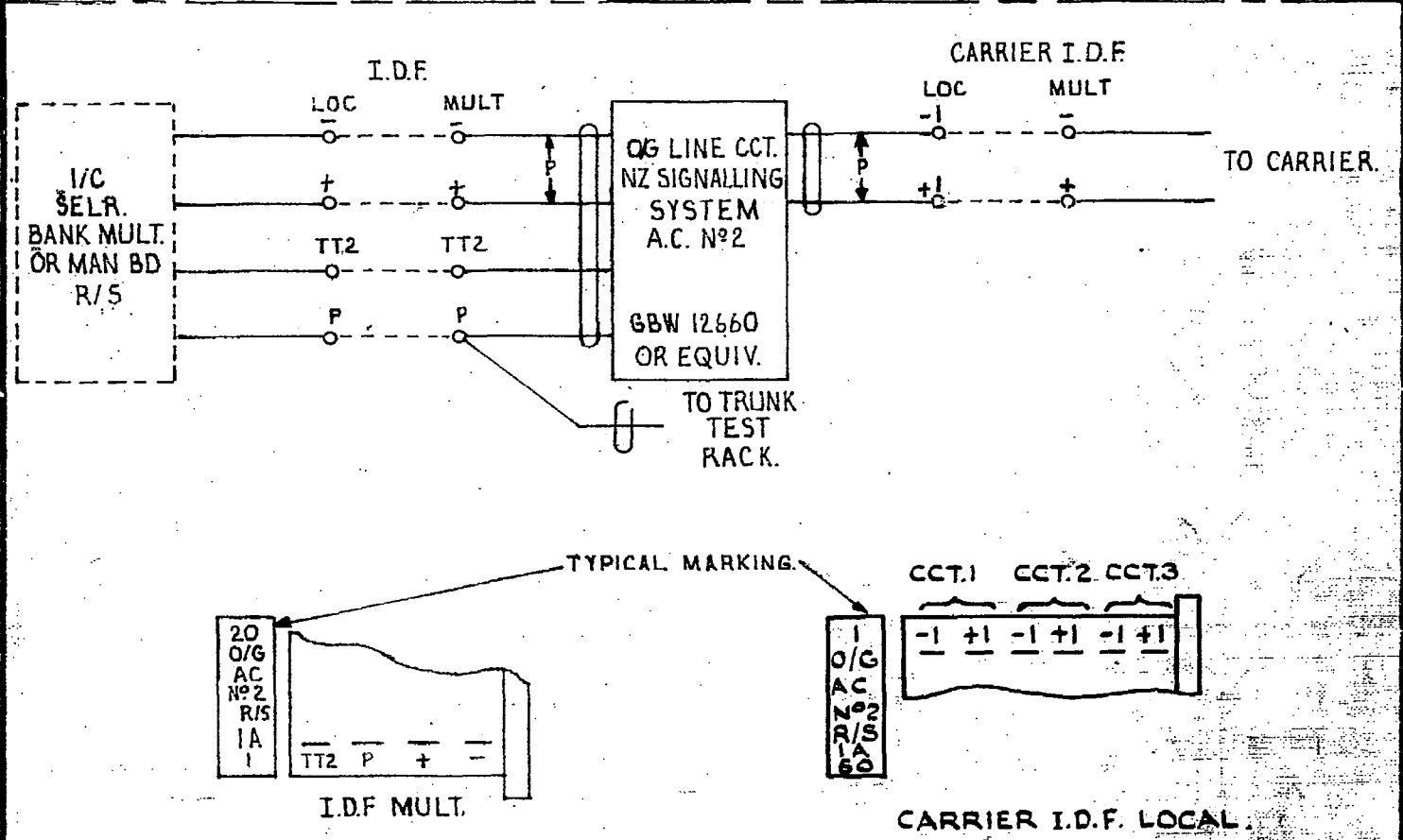


FIG. D

						<p>O/G LINE CIRCUIT NZ SIGNALLING SYSTEM A.C. N°2</p>
REPLACEMENT TCG. INCORP. (83758)	5	4.12.74	BSH			
CARRIER I.D.F. BLOCK VIEW INVERTED.	5	8.9.70	CBT			
FIG.D. ADDED.	4	16.2.69				
TITLE AMENDED. 12661 ADDED.	3	16.10.68				
	2	27.9.61				
AMENDMENT PARTICULARS	ISSUE	DATE	APP			IVF
N.Z.P.O	DRAWN	CHECKED	WIRING	CIRCUIT	SHEET	2-2
	29.9.61	49.0	49.0	ASH	GBX 12660	12661