

FIG. 1 200 OUTLET GROUP SELECTOR CONNECTED VIA T.D.F.

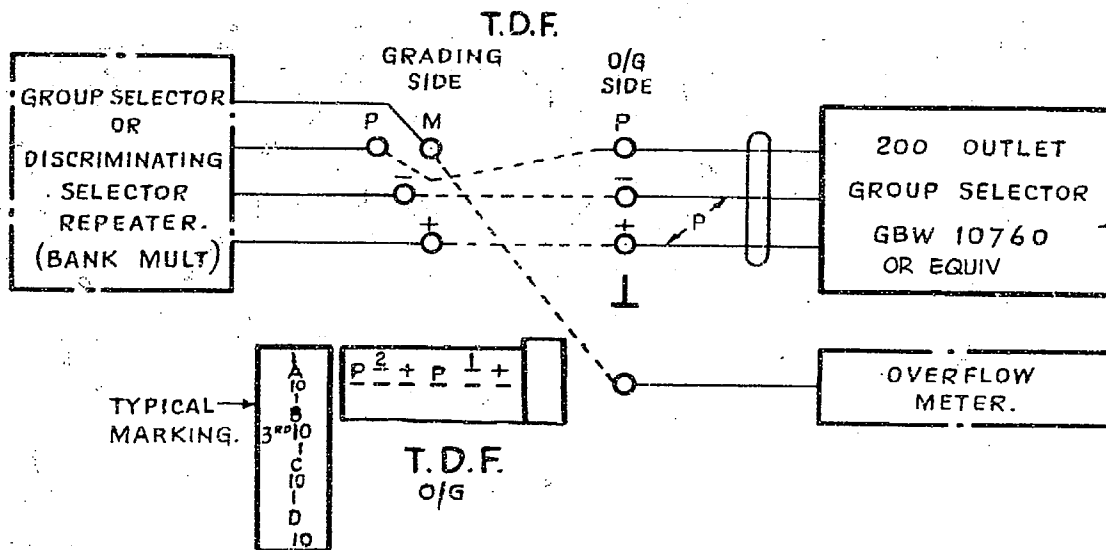
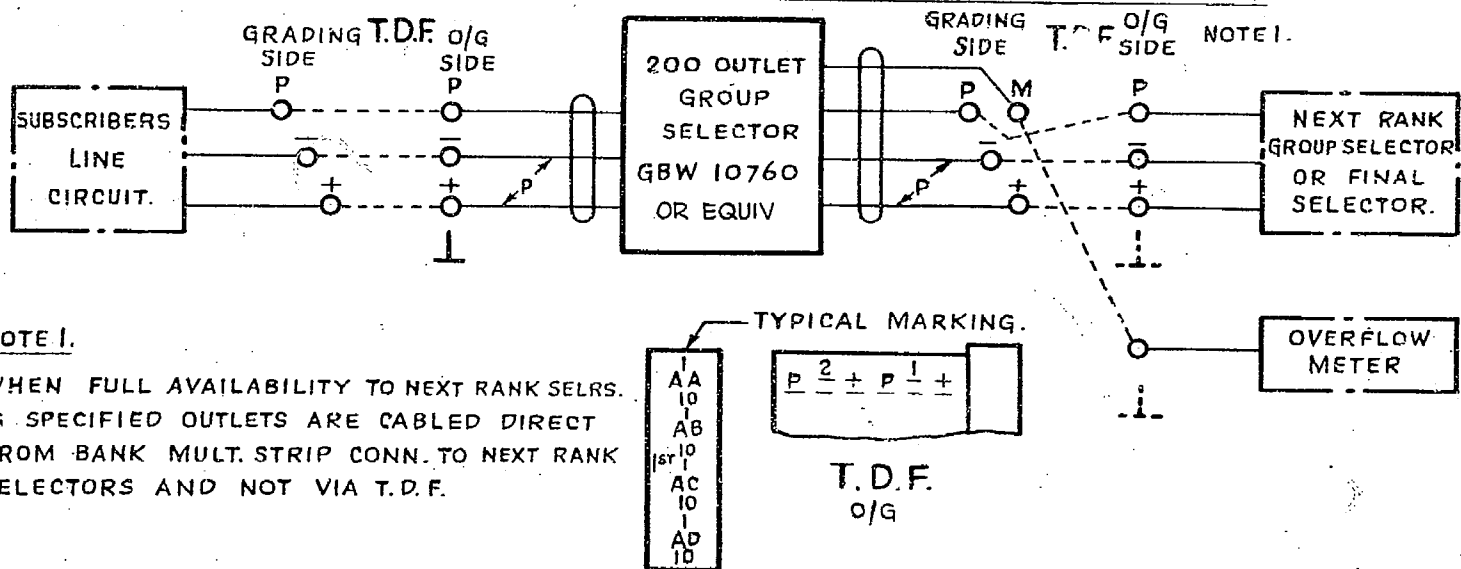


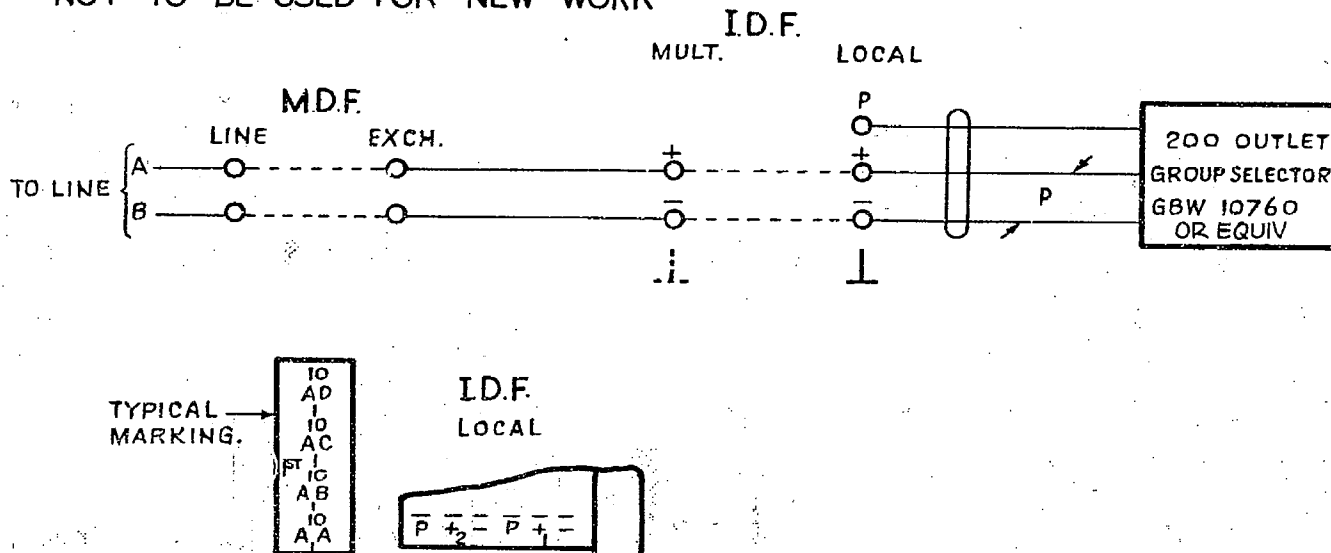
FIG. 2 200 OUTLET 1<sup>ST</sup> GROUP SELECTOR CONNECTED VIA T.D.F.



NOTE 1.

WHEN FULL AVAILABILITY TO NEXT RANK SELRS. IS SPECIFIED OUTLETS ARE CABLED DIRECT FROM BANK MULT. STRIP CONN. TO NEXT RANK SELECTORS AND NOT VIA T.D.F.

FIG. 3 200 OUTLET GROUP SELECTOR INCOMING VIA M.D.F. AND I.D.F. NOT TO BE USED FOR NEW WORK



WAS SHEET 1-3. (69174) 7 4-10-63 *OBK*

FIG. 3 NOTE RE. NEW WORK ADDED (53289) 8 10-11-66 *OBK*

AMENDMENT PARTICULARS

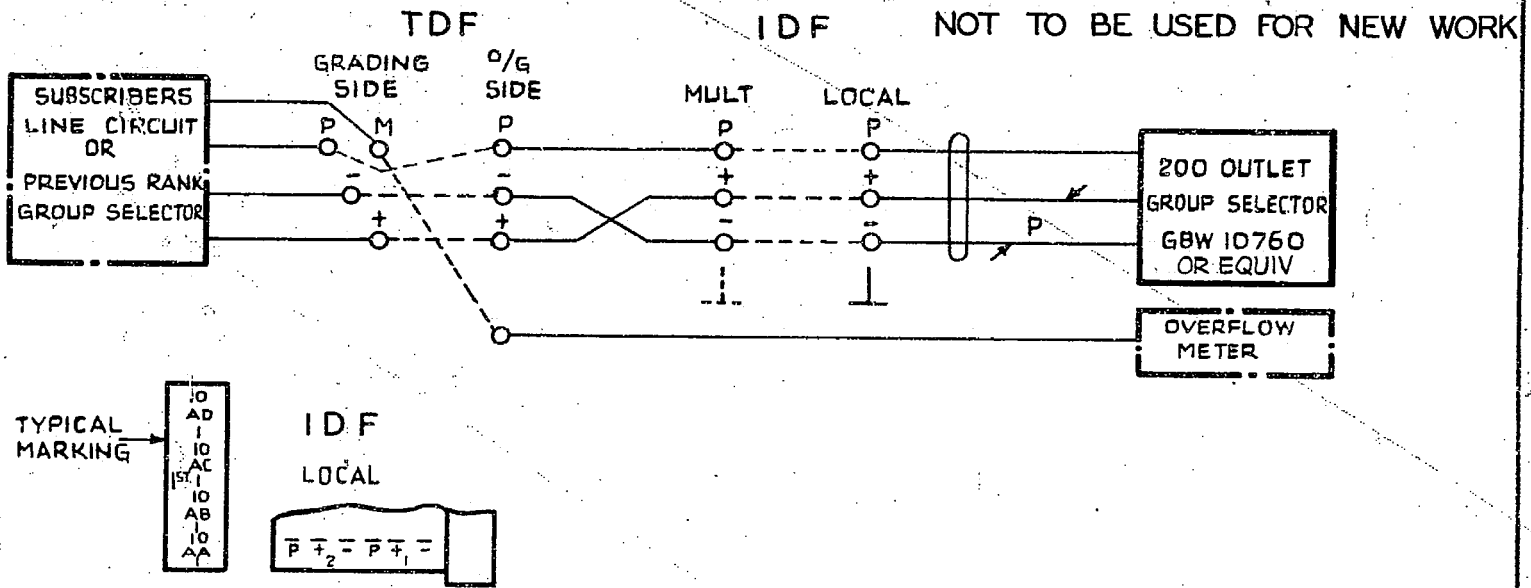
ISSUE DATE APPD

E

N.Z. P.O. DRAWN CHECKED WIRED ENGINEERS

GBX 10760 10762  
10761 SHEET 1-5

**FIG 4 200 OUTLET GROUP SELECTOR CONNECTED VIA TDF & IDF LOCAL** NOT TO BE USED FOR NEW WORK



**FIG 5 200 OUTLET GROUP SELECTOR INCOMING VIA MDF & TDF**

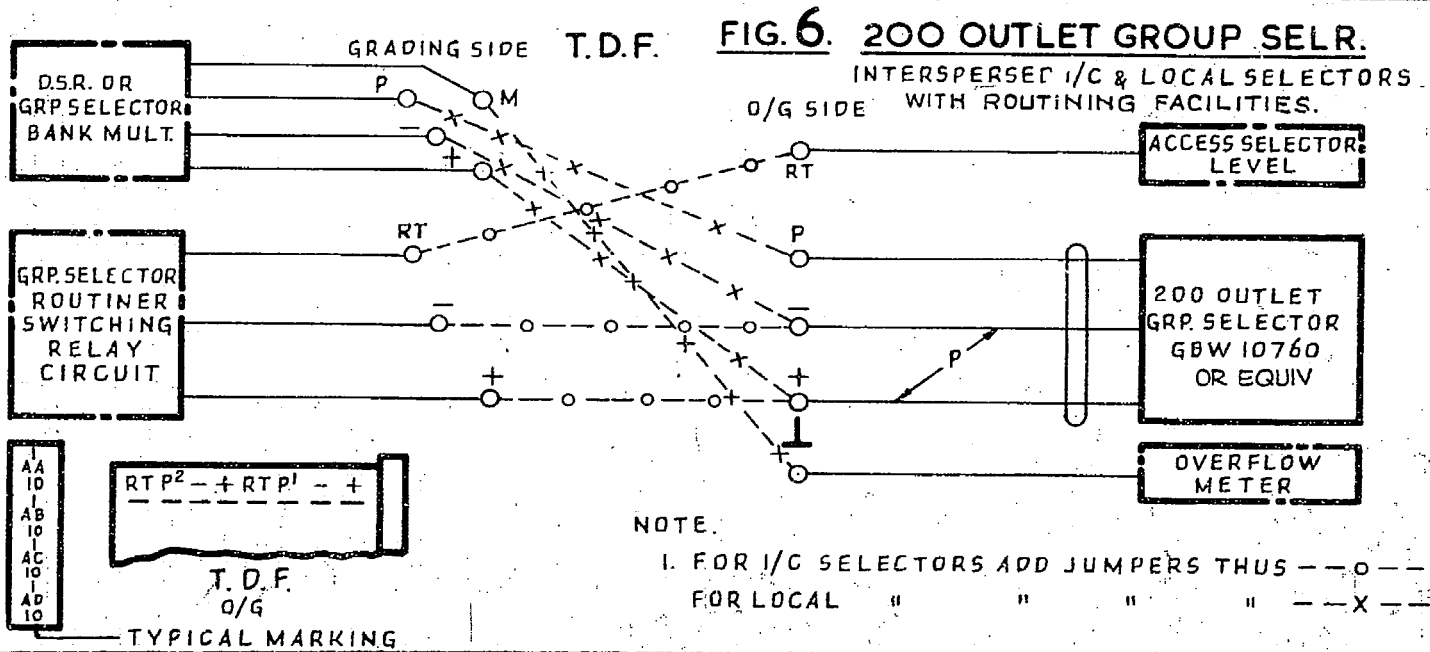
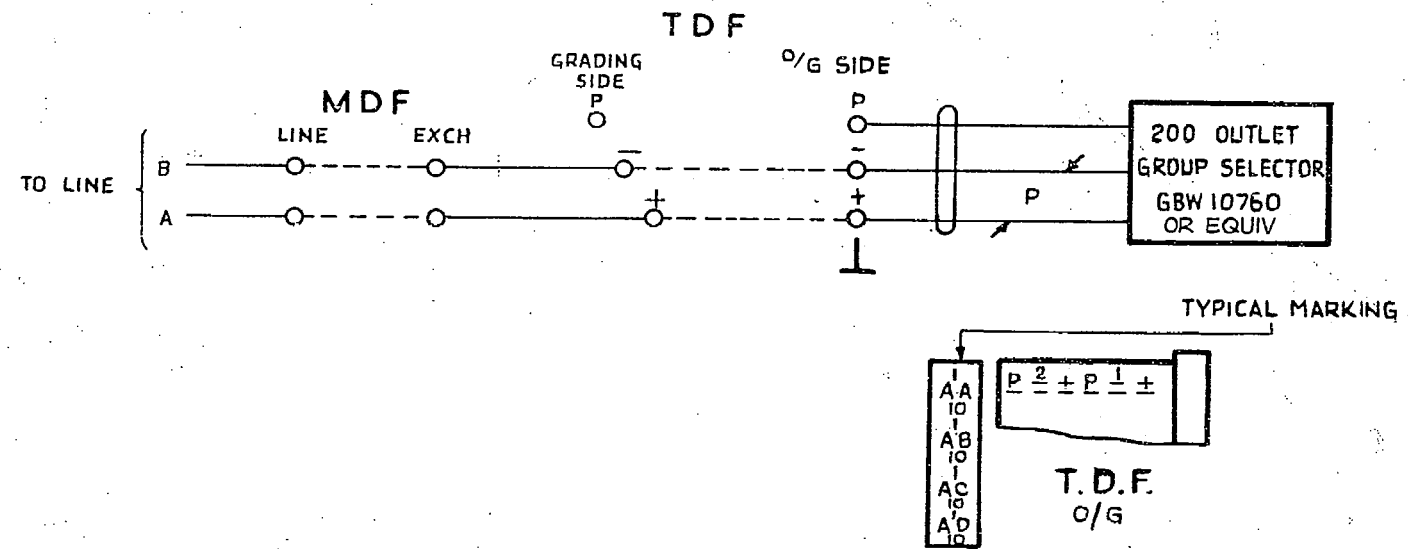
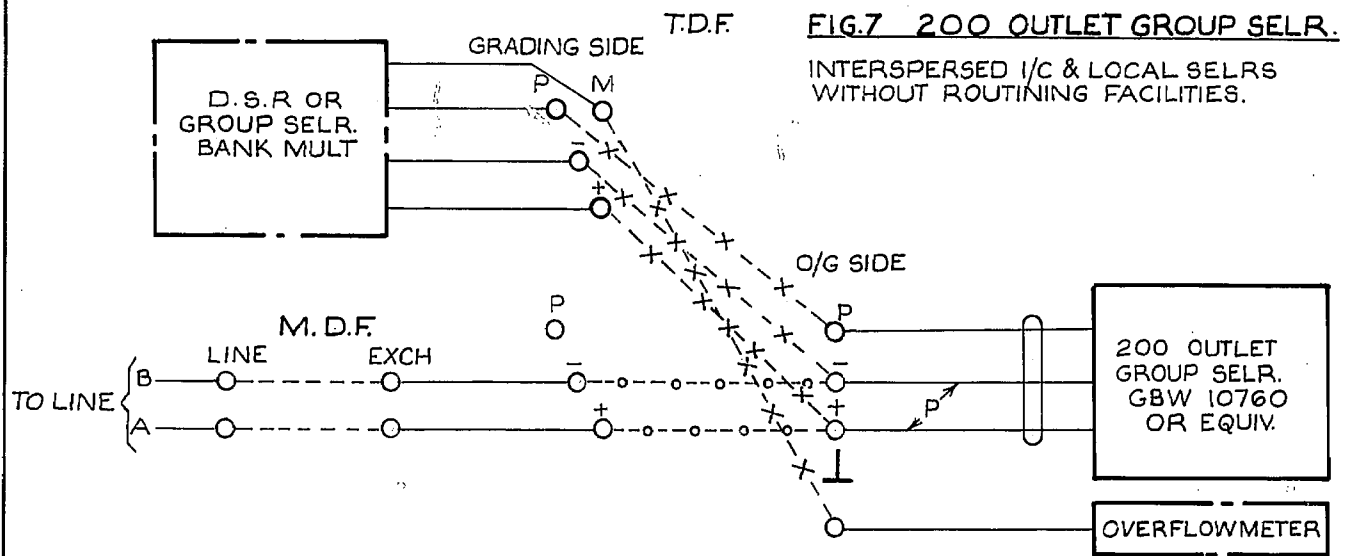


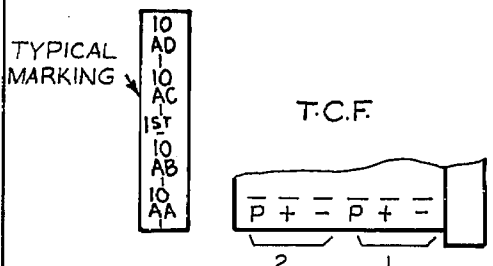
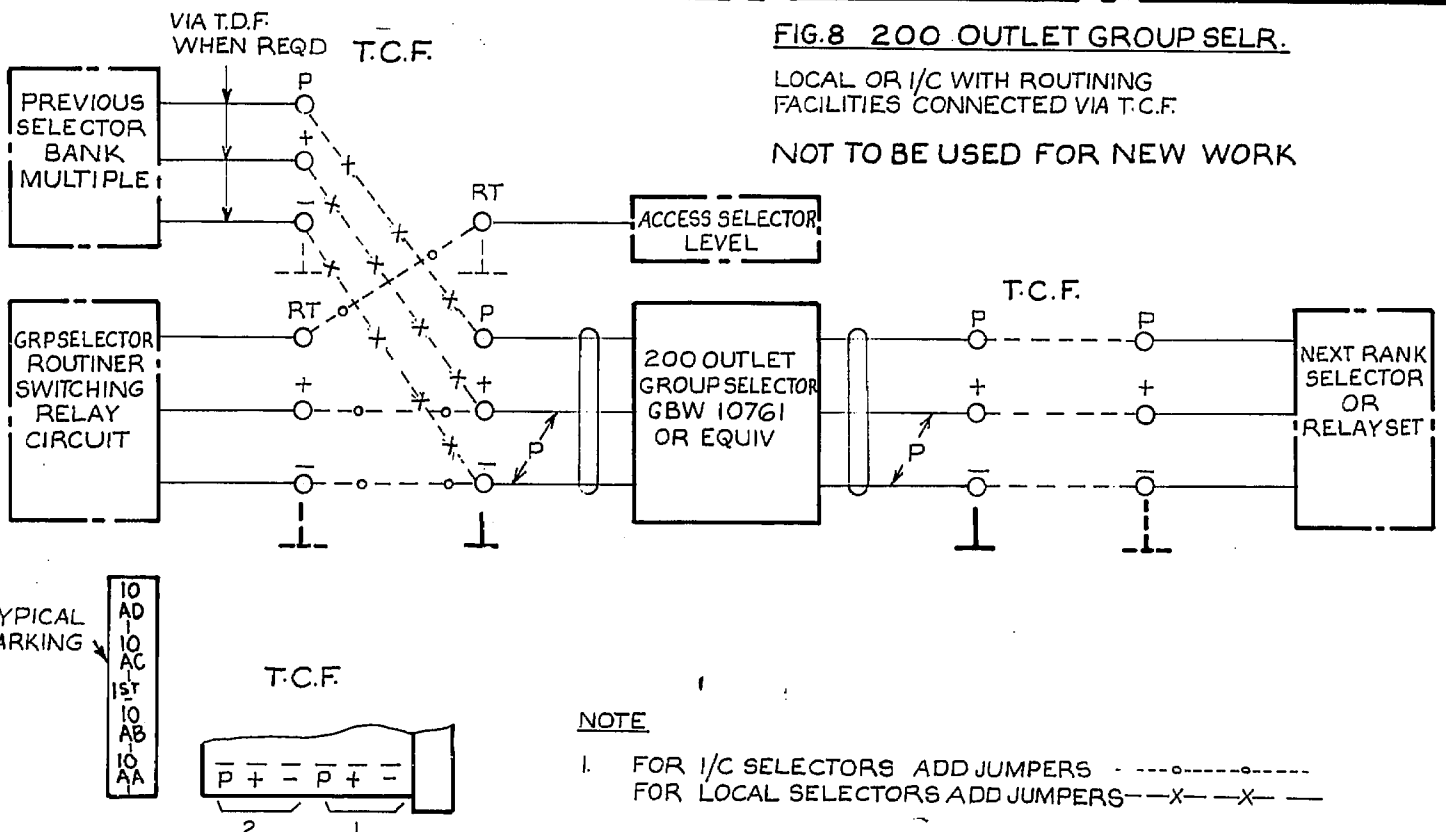
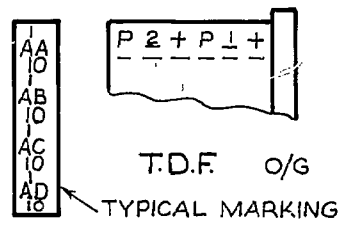
FIG. 4. TITLE AMENDED WAS SHEET 2-3 (69174)		7	4-10-63	DBH	<b>200 OUTLET GROUP SELECTOR</b>	
FIG. 4 NOTE RE. NEW WORK ADDED: (53289)		8	10-11-66			
AMENDMENT PARTICULARS		ISSUE	DATE	APPD		E
N.Z. P.O.	DRAWN	CHECKED	WIRING	ENGINEER		

**GBX 10760 10762**  
**10761**  
**SHEET 2-5**

D.O.4



**NOTE**  
 1. FOR I/C SELECTORS ADD JUMPERS -----  
 FOR LOCAL SELECTORS ADD JUMPERS ---X---X---



**NOTE**  
 1. FOR I/C SELECTORS ADD JUMPERS -----  
 FOR LOCAL SELECTORS ADD JUMPERS ---X---X---

PROOF

RETRACED	(183021)	8A	20.11.79	A.D.G.
FIG.8. NOTE RE. NEW WORK ADDED.	(53289)	8	10.11.66	
WAS SHEET 3-3	(69174)	7	4.10.63	
10762 ADDED TO DIAGRAM N°	(42366)	6	27.9.61	
FIG.8 ADDED	(65229)	5	7.7.55	
NO CHANGE ISSUE ADVANCED ONLY	(31667)	4	5.5.54	
		3	6.11.50	

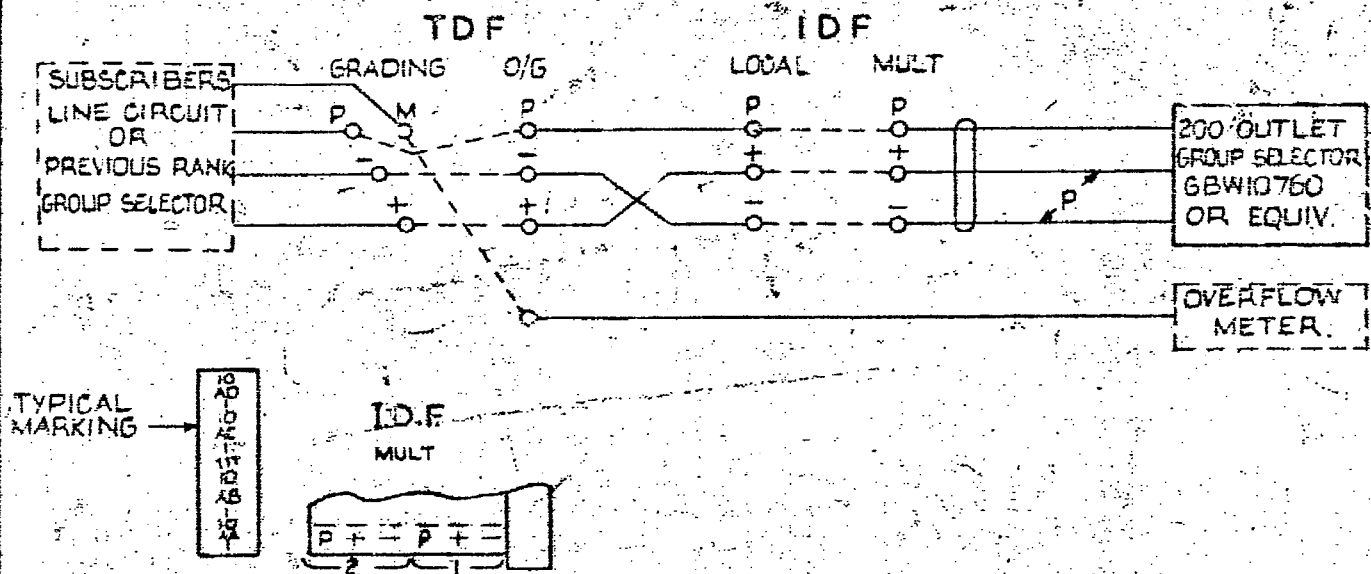
## 200 OUTLET GROUP SELECTOR

AMENDMENT PARTICULARS	ISSUE	DATE	APD.	SIZE: A4	E
-----------------------	-------	------	------	----------	---

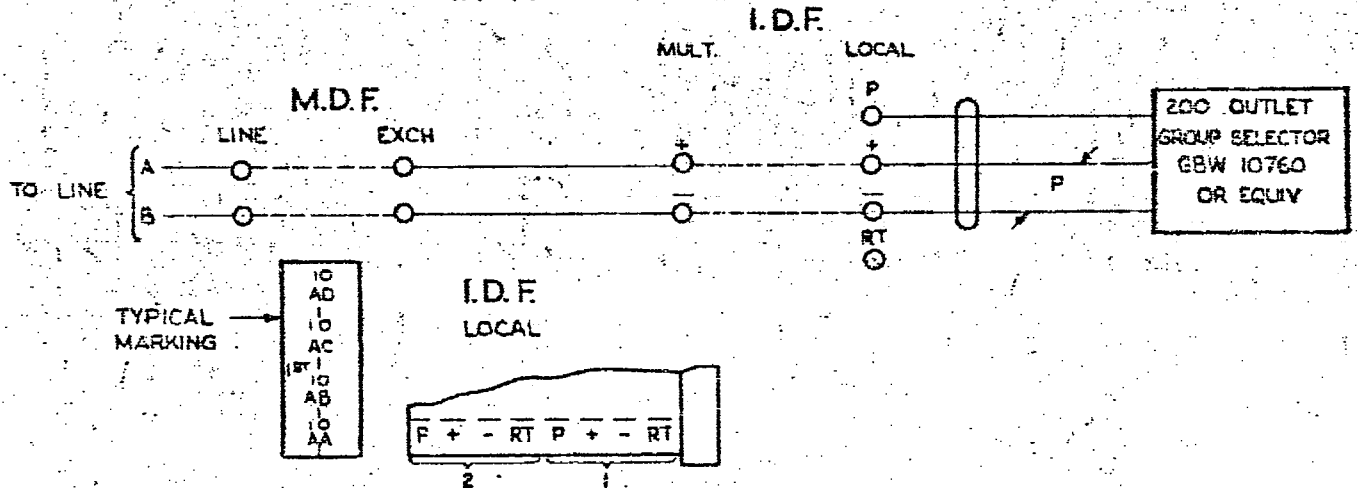
0 NZPO 5 Centimetres 10 ENGRS GBX 10760 10762 10761 SHEET 3-5 20

**FIG. 9** 200 OUTLET GROUP SELECTOR CONNECTED VIA I.D.F. MULT

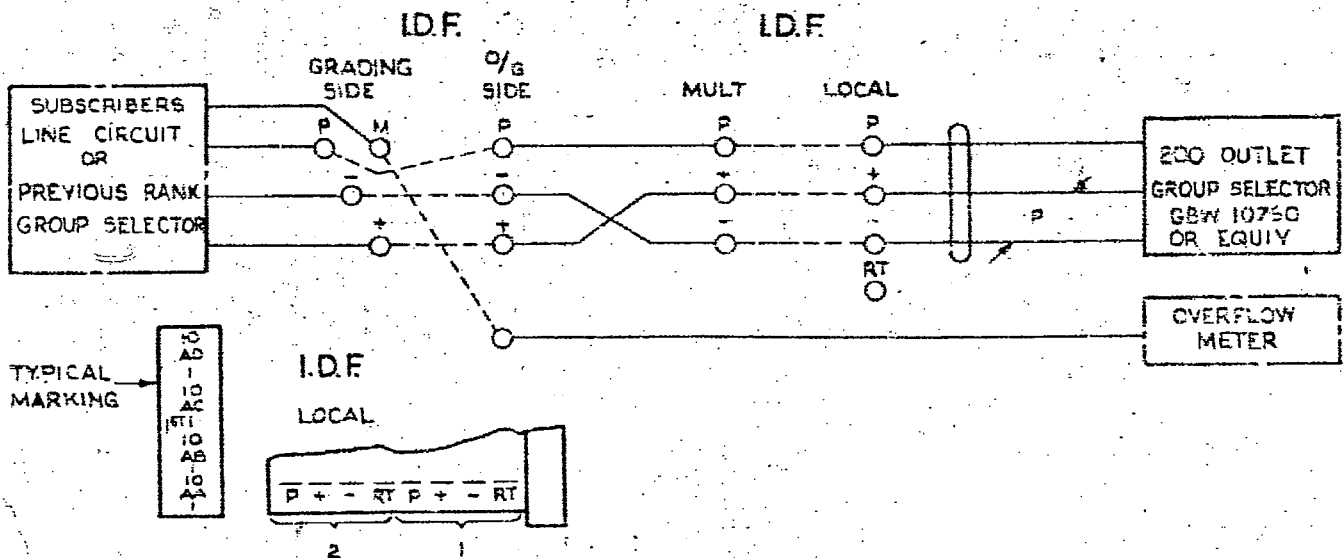
NOT TO BE USED FOR NEW WORK



**FIG. 10** 200 OUTLET GROUP SELECTOR INCOMING VIA M.D.F. AND I.D.F. WITHOUT ROUTING FACILITIES.



**FIG. 11** 200 OUTLET GROUP SELECTOR CONNECTED VIA IDF LOCAL



200 OUTLET  
GROUP SELECTOR

FIGS 10 & 11 ADDED (53289) E 10-11-66

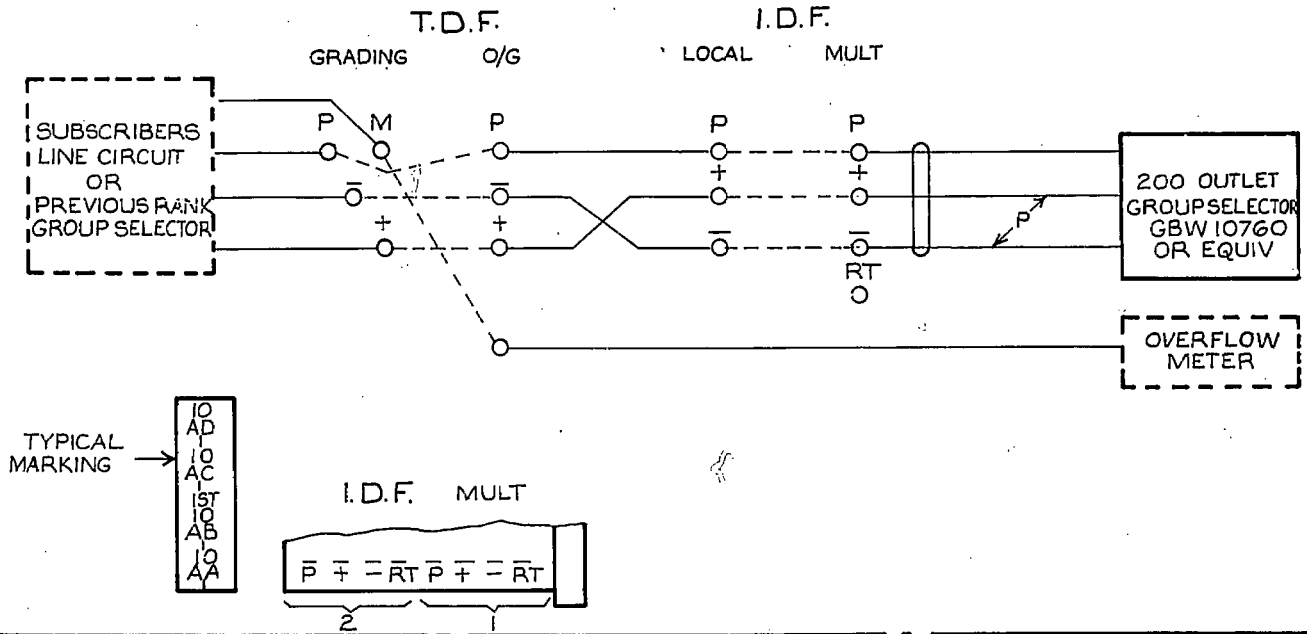
AMENDMENT PARTICULARS

ISSUE DATE A/P

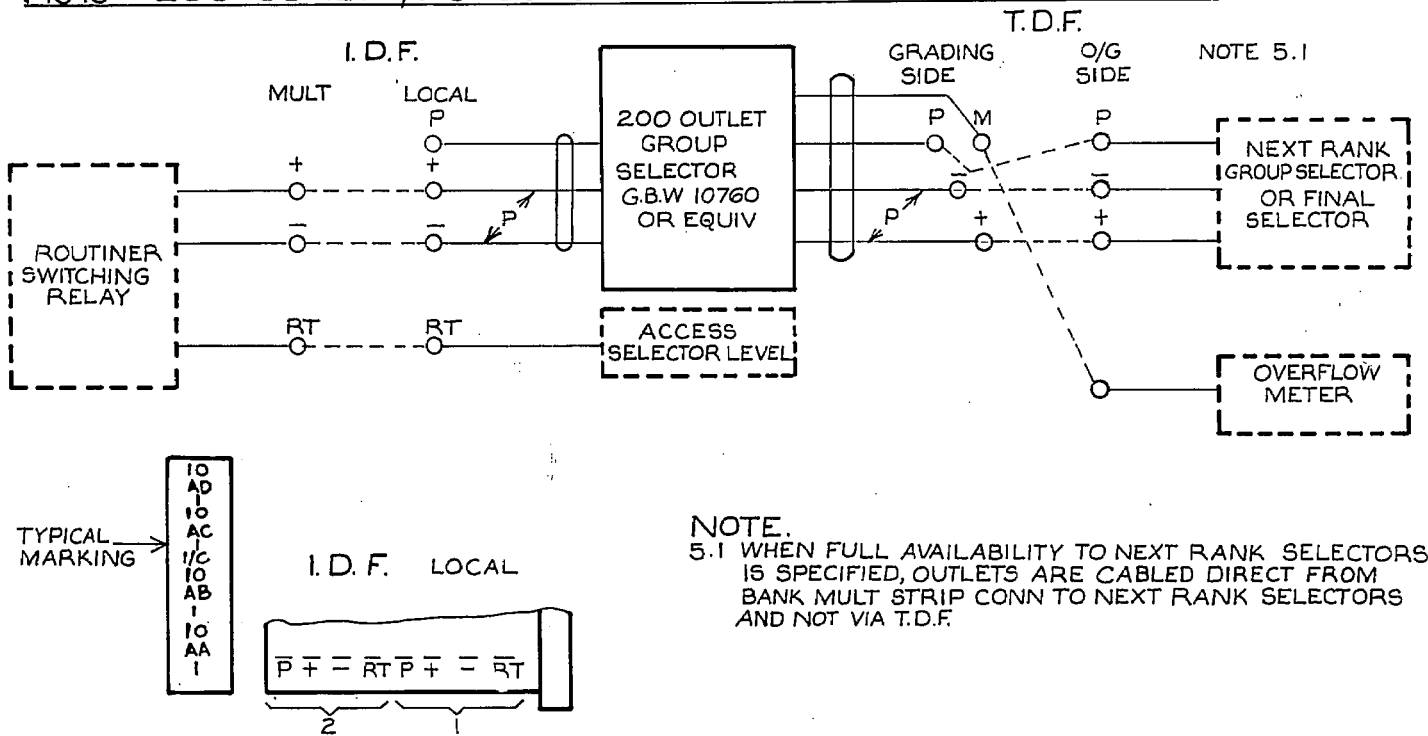
GBX 10760 10762  
10761

SHEET  
4-5

**FIG 12 200 OUTLET GROUP SELECTOR CONNECTED VIA I.D.F. MULT.**



**FIG 13 200 OUTLET I/C GROUP SELECTOR WITH ROUTINING FACILITIES.**



PROOF

					200 OUTLET GROUP SELECTOR
RETRACED	(183021)	8A	20.11.79		
	(53289)	8	10.11.66		
AMENDMENT PARTICULARS			ISSUE DATE	APD.	SIZE A4
			GBX 10760 10762 10761		
NZPO	DRAWN	CHECKED	WIRING	ENGRS	SHEET. 5-5