

FIG. 1A CONNECTIONS FOR POSITIONS WITH INDIVIDUAL LAMPS

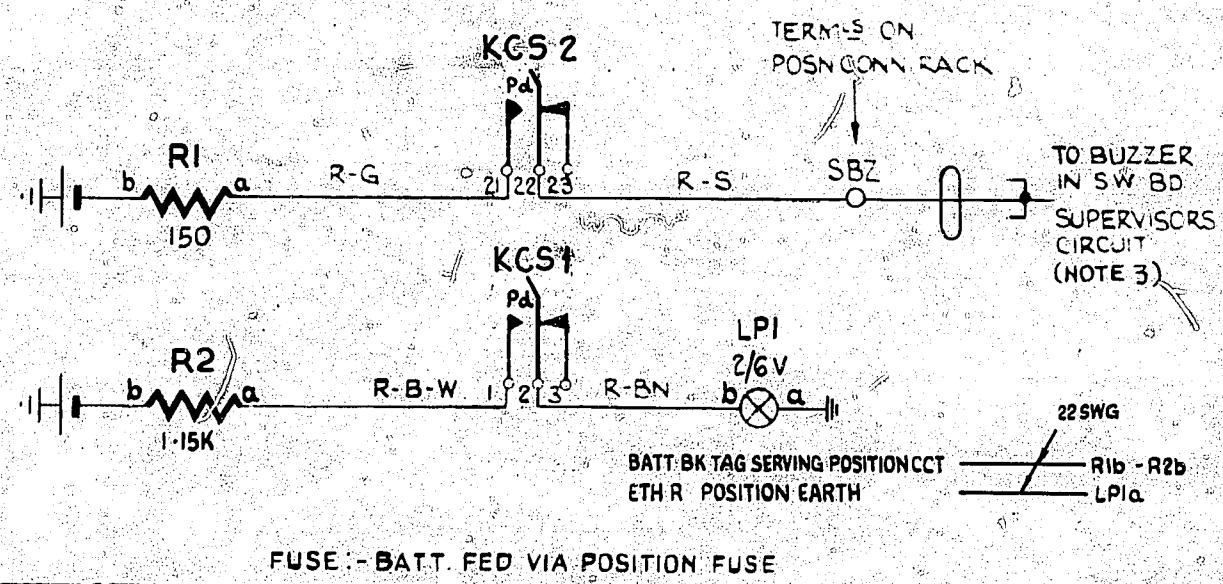


FIG. 4A CONNECTIONS FOR PNEUMATIC DISTRIBUTION & TICKET FILING POSITIONS

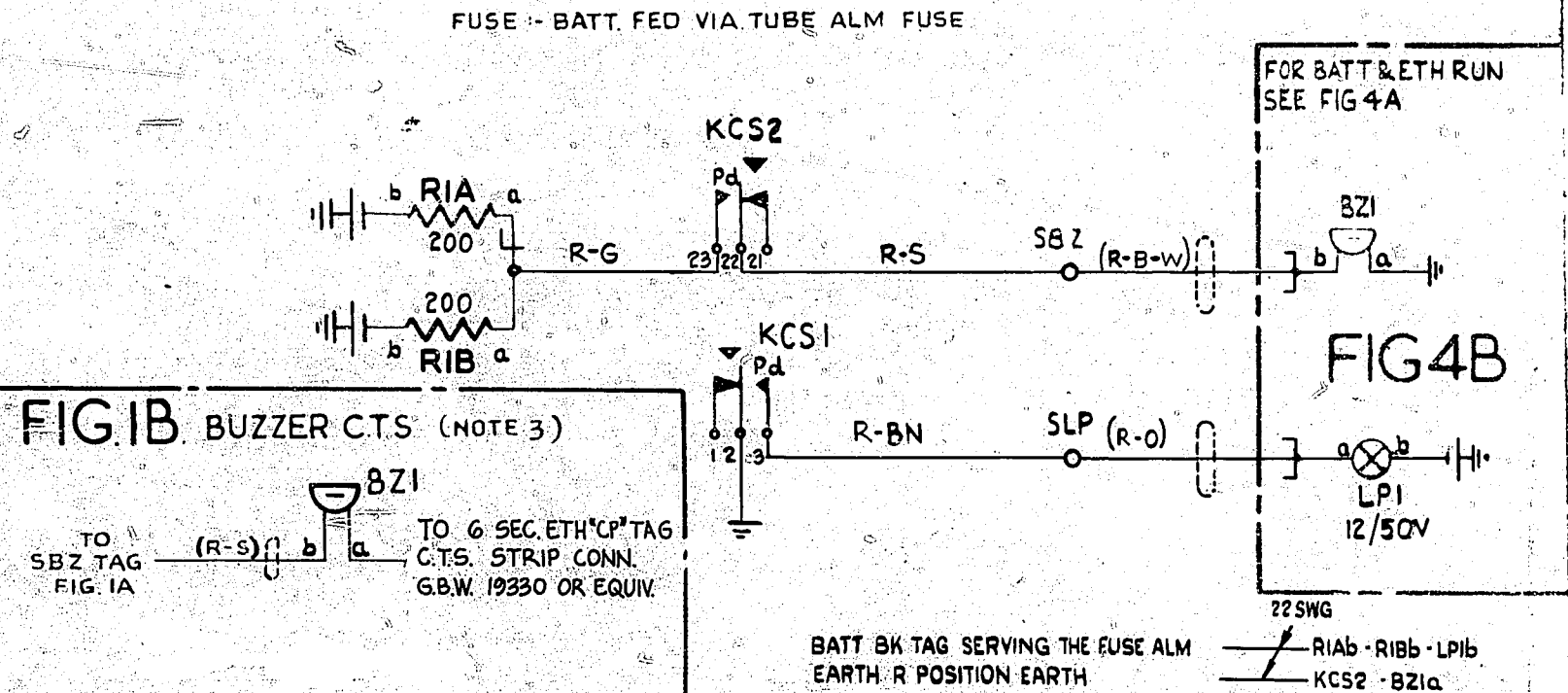


FIG. 2A CONNECTIONS FOR TICKET SORTING & FILING POSITIONS

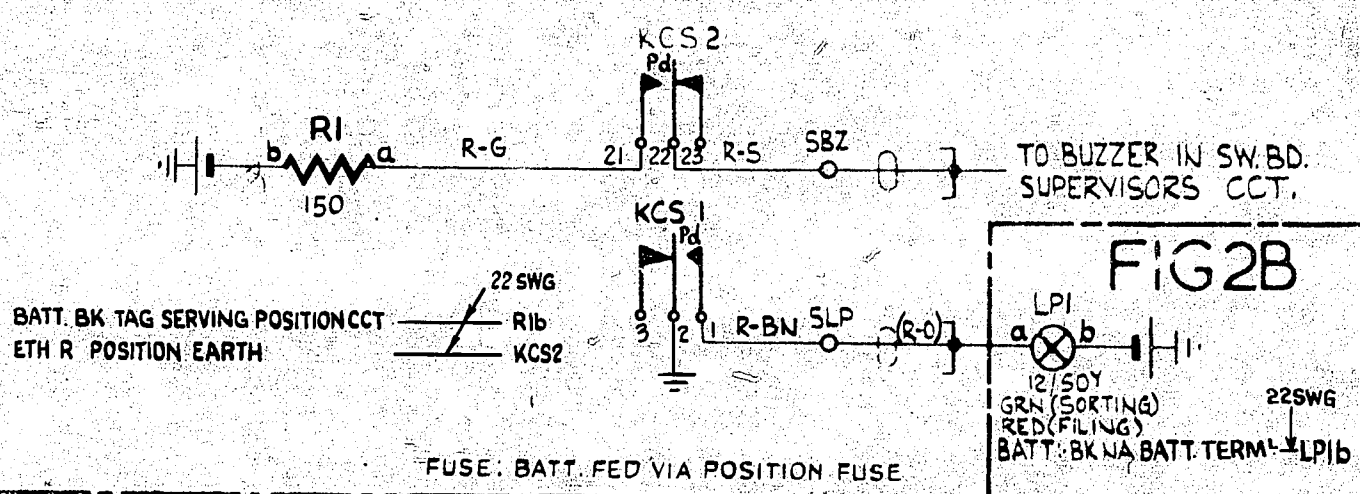


FIG. 5A CONNECTIONS FOR S.F.J. POSITIONS

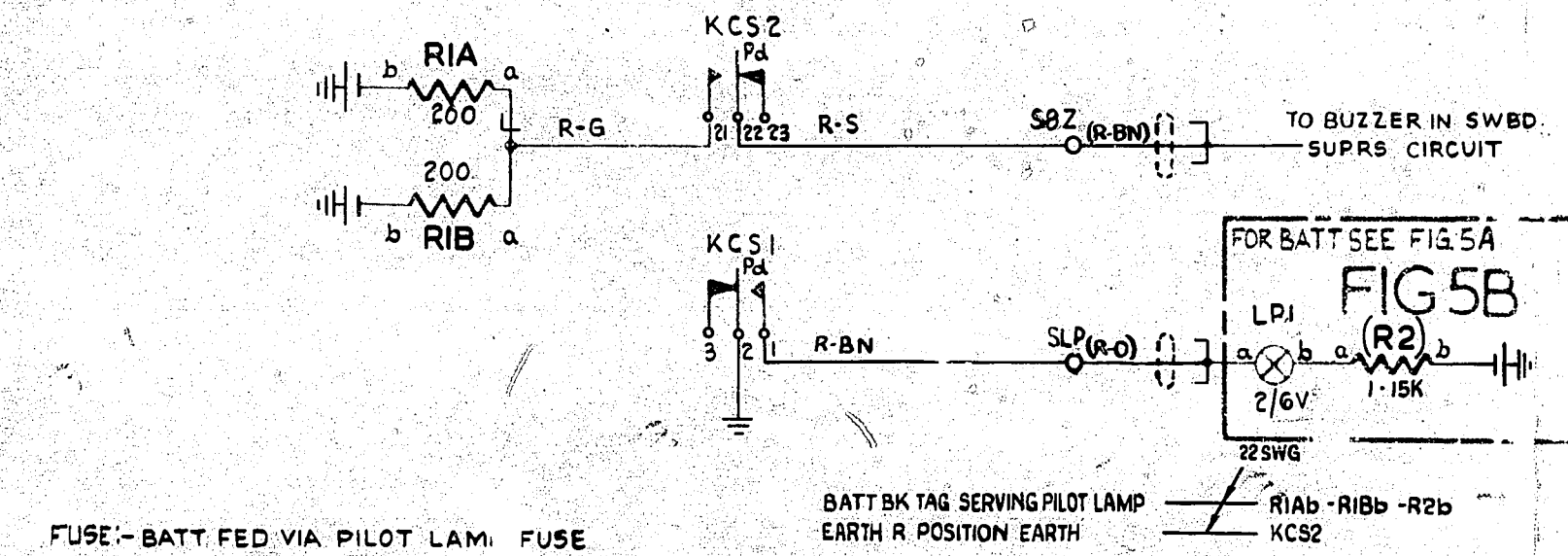
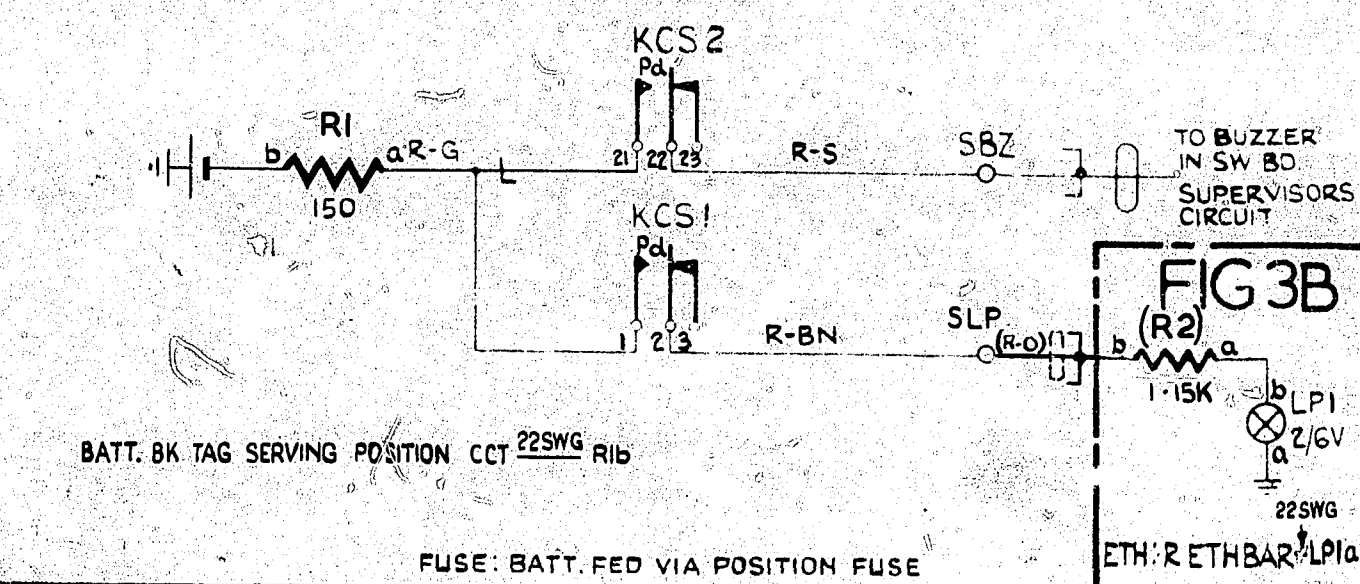


FIG. 3A CONNECTIONS FOR 2 OR MORE POSITIONS COMMONED TO ONE LAMP



- NOTES:
- ALL WIRING TO BE 25 SWG UNLESS OTHERWISE SPECIFIED
 - CALL SUPER KEY FORMS PART OF COUPLING KEY ON POSITION CCT. GBW 19220 OR EQUIV.
 - BUZZER (FIG. 1B) USED IN ASSOC'N WITH FIG. 1A WHEN SWITCHBOARD SUPRS CCT IS NOT PROVIDED

NOTE 2
CALLS SUPERVISOR (KCS)
2

FIG 1A	KCS WAS NONLOCKING, FIG 1B AMD (152912)	IA	19.9.76	C.J.W
	(58280)	1	10.2.67	D.B.
AMENDMENT PARTICULARS		ISSUE DATE	APPD	REF: - GS3-13-16 (GBW12930)
		SIZE: S		50% E
NZPO	DRAWN	CHECKED	WIRING CIRCUIT	GBW 19230