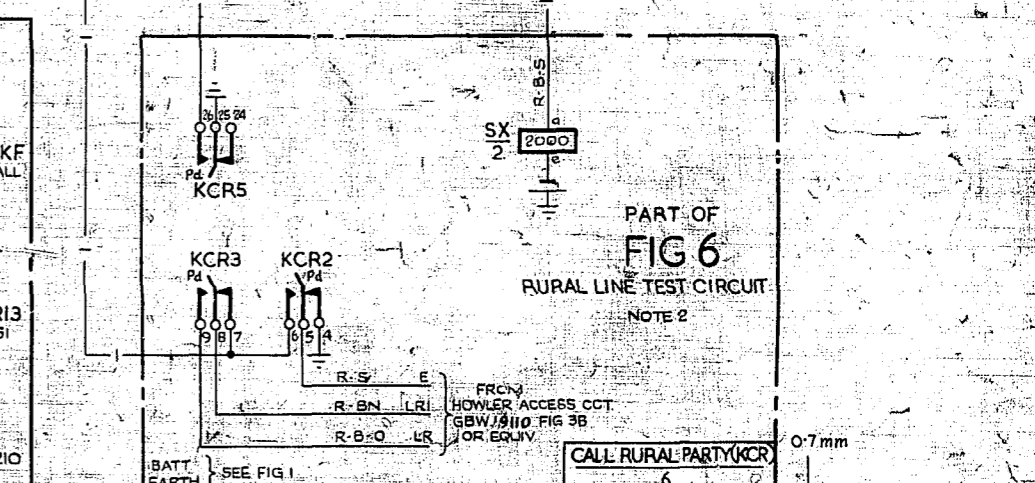
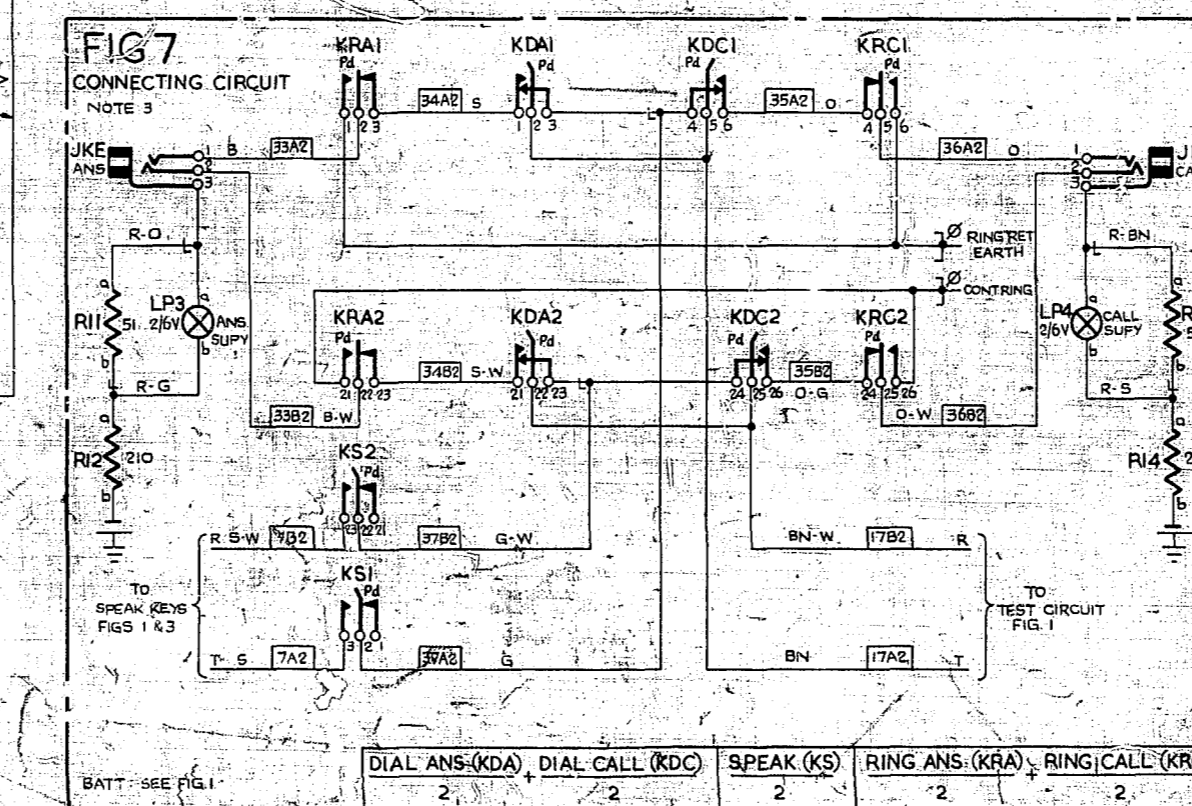
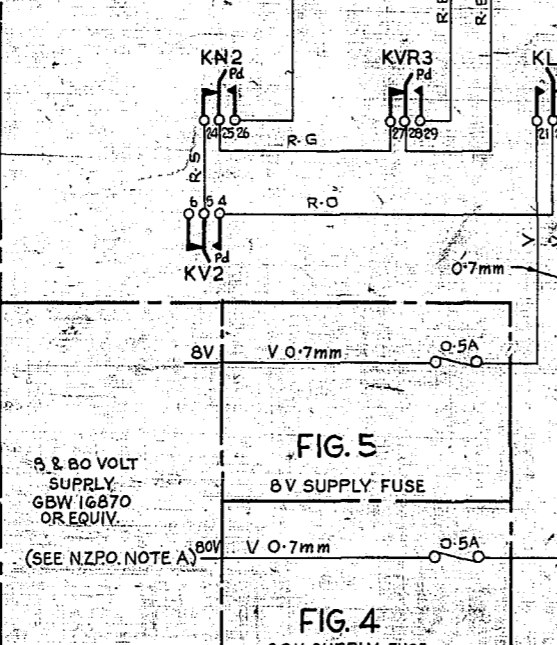
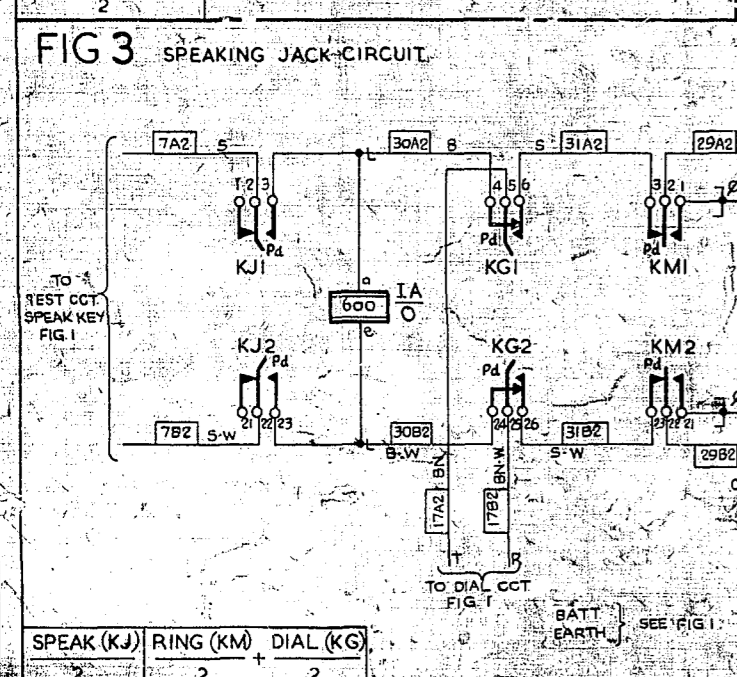
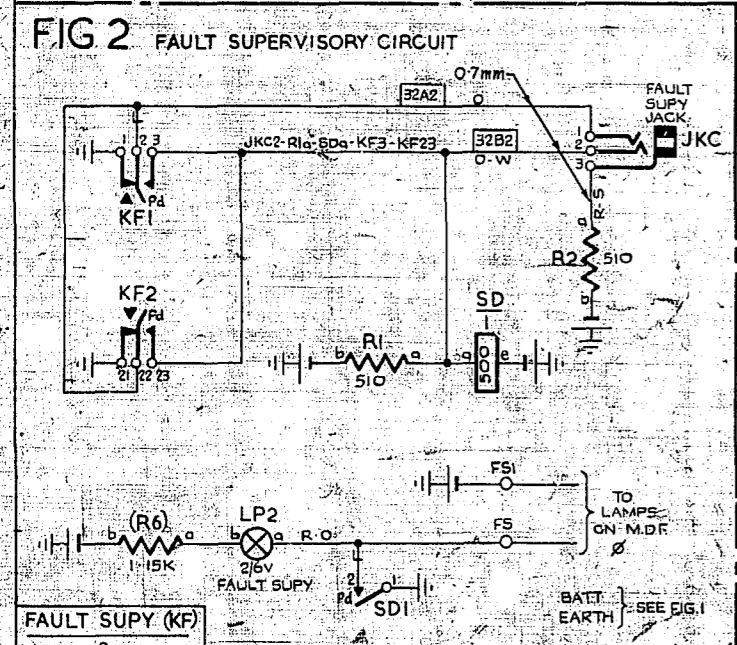
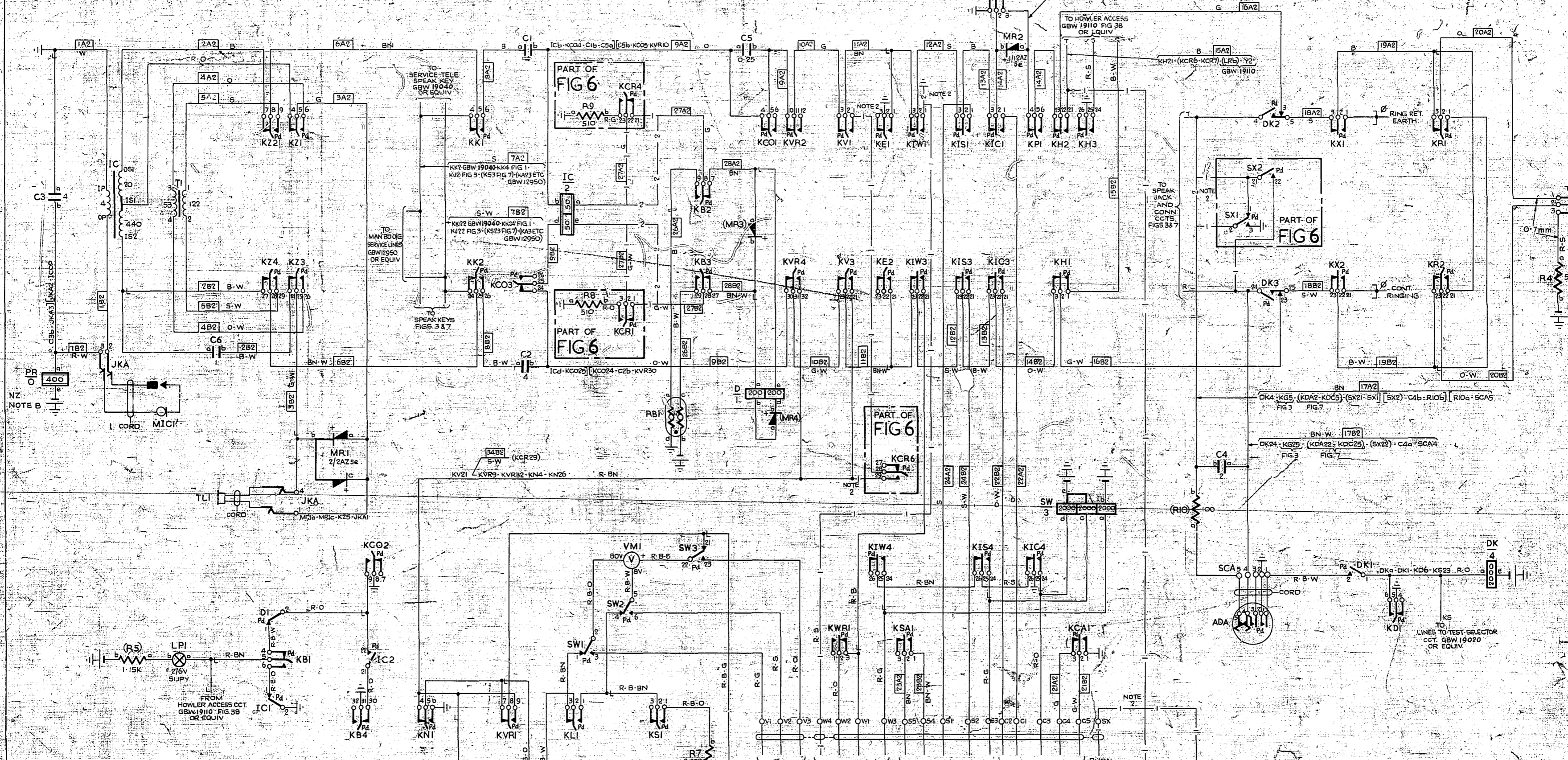


FIG 1 TEST CIRCUIT



**N.Z.P.O. NOTES**  
 A. TEST SUPPLY IS EITHER BATTERIES OR 8/80 VOLT SUPPLY UNIT GBW 16870. WHEN BATTERY REPLACEMENTS ARE REQUIRED THEY ARE TO BE REPLACED BY THE 8/80VOLT SUPPLY UNITS GBW 16870.  
 B. WHEN 100 TYPE HANDSET (OR EQUIV) IS USED PR RETARD COIL IS REPLACED WITH CODE B76984 WHICH HAS A 1200Ω WINDING.

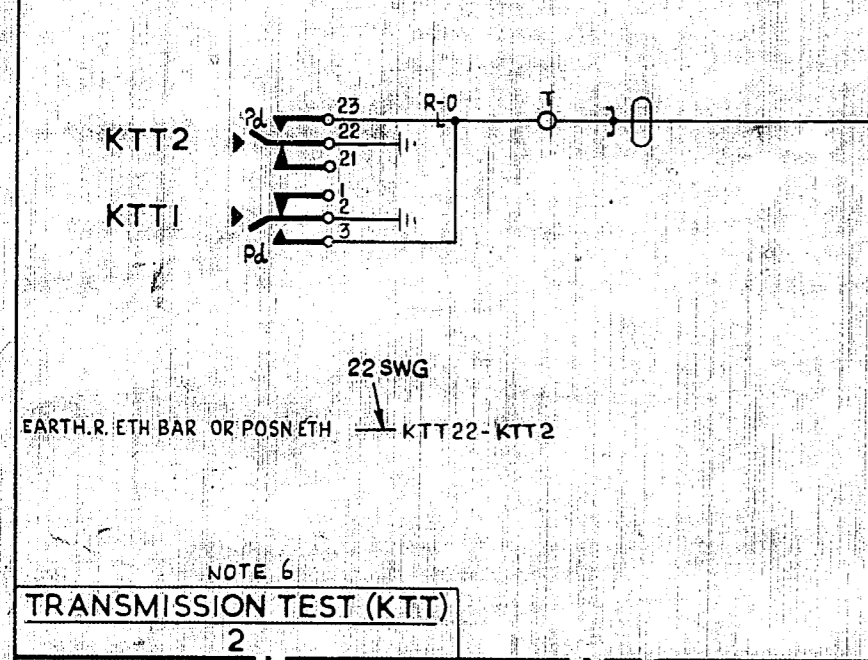
- NOTES**
- FUSING - 1.5A PER TEST JACK, SPEAK JACK, FAULT SUPERVISORY & CONING C.T. 1.5A PER TELEPHONE & BATTERY FEED C.T.
  - WHEN RURAL LINE TEST FACILITIES ARE SPECIFIED PROVIDE FIG 6 & CONNS SHOWN - 1 - & OMIT CONNS SHOWN - 2 -
  - FIG 7 IS REQD ONLY WHEN HOSPITAL CIRCUITS TO GBW 16430 OR EQUIV ARE EQUIPPED.
  - DELETED
  - ALL WIRING TO BE UNLESS OTHERWISE SPECIFIED
  - FOR WIRING SEE RELEVANT COMMON SERVICES DIAGRAM
  - ON SOME EARLY EQUIPMENT BATTERY WIRING IS BK

SPEAK (KJ)	RING (KM)	DIAL (KG)	TEST BATT. C/O & REC. NEG (KO) EARTHING (KE)	SUBS. BATT. & HOLD C/O (KO) LINE REV (KR)	SPEAK (KK) BY SCALE (KL)	RING (KX) DIAL (KD)	HOWLER (KH)	BATT FEED (KB)	VOLTMETER (KV)	VOLTMETER REV (KVR)
2	2	2	2	2	2	2	2	2	2	2
WEIGHT RESET (KWR)	SPEED ADJUST (KSA)	COUNT ADJUST (KCA)	XPARTY (KP)	CALL SHARED SERVICE (KCS)	TRANS CUT-OFF (KT)	Y METER SHUNT (KS)	IMPULSE WEIGHT (KW)	IMPULSE SPEED (KIS)	IMPULSE COUNT (KIC)	
2	2	2	2	2	2	2	2	2	2	

TEST RACK		TEST JACK SPEAK JACK	
NZPO NOTE B ADDED (55992)	2B	80-8-74 C.J.W.	
NZPO NOTE A ADDED (6215)	2A	18-11-71 B.S.M.	
8 & 80V SUPPLY CHANGER NOTE 4 DEL. NOTE 7 ADD (58280)	2	18-1-71	
AMENDMENT PARTICULARS		ISSUE DATE	APPROV. REF. GBT 32
		10-2-67	
DRAWING CHECKED		WIRING	RESULT
N.Z.P.O.			60V D.C.

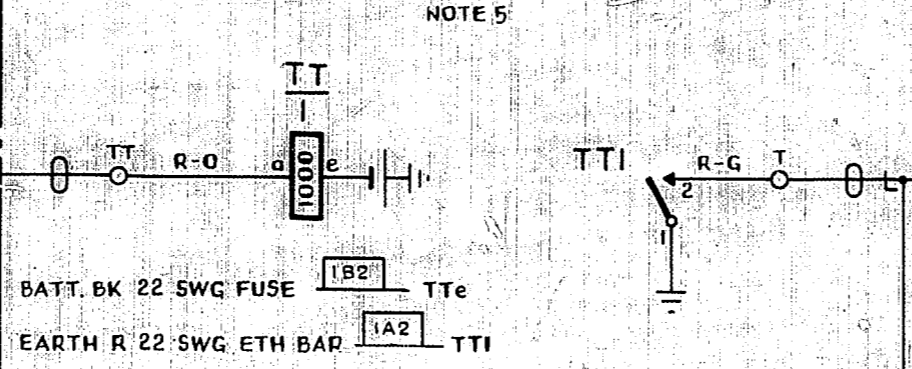
Centimetres

**FIG 1** TERMINAL EXCHANGE TEST DESK OR TEST RACK  
(1 PER TEST & OPERATE JACK USED FOR REMOTE TESTING)



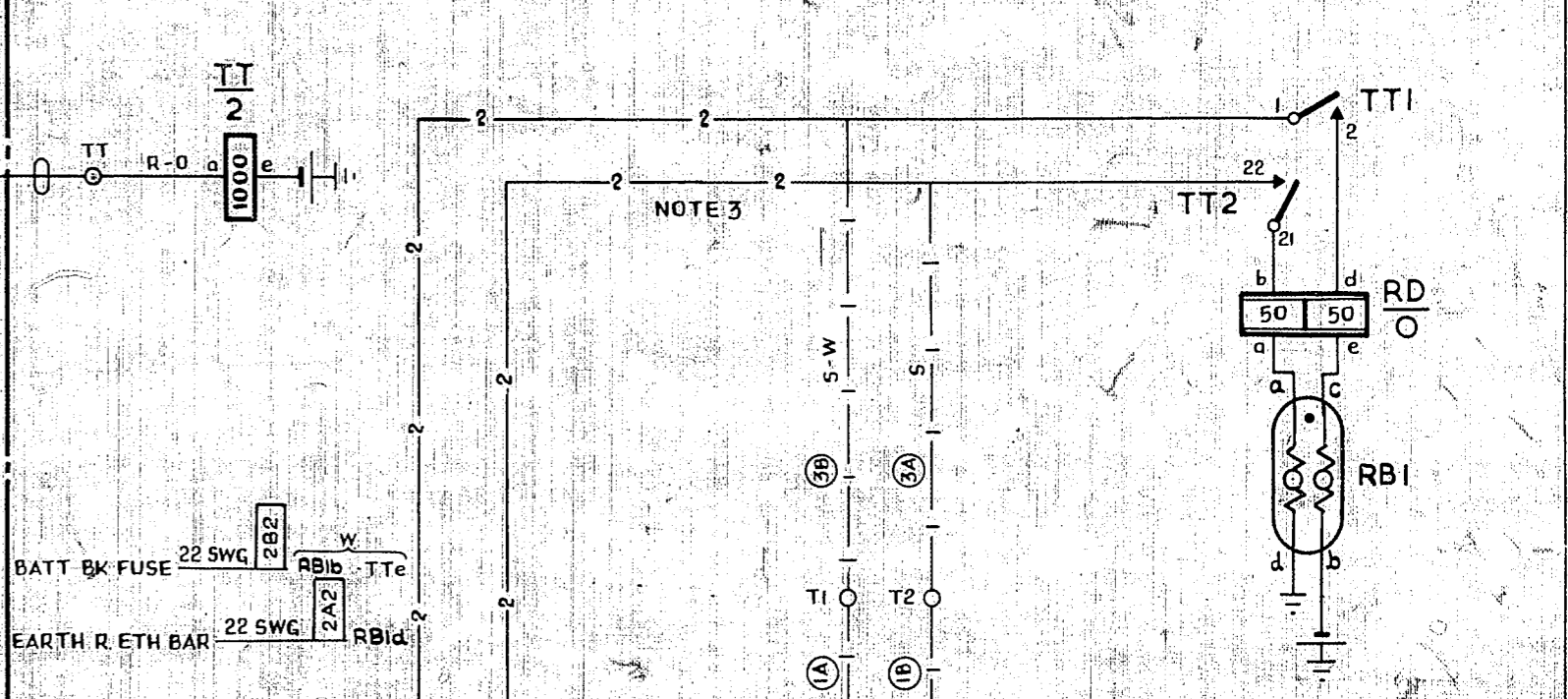
JUNCTION VIA M.D.F.

**FIG 3A** INTERMEDIATE EXCHANGE M.A.R.

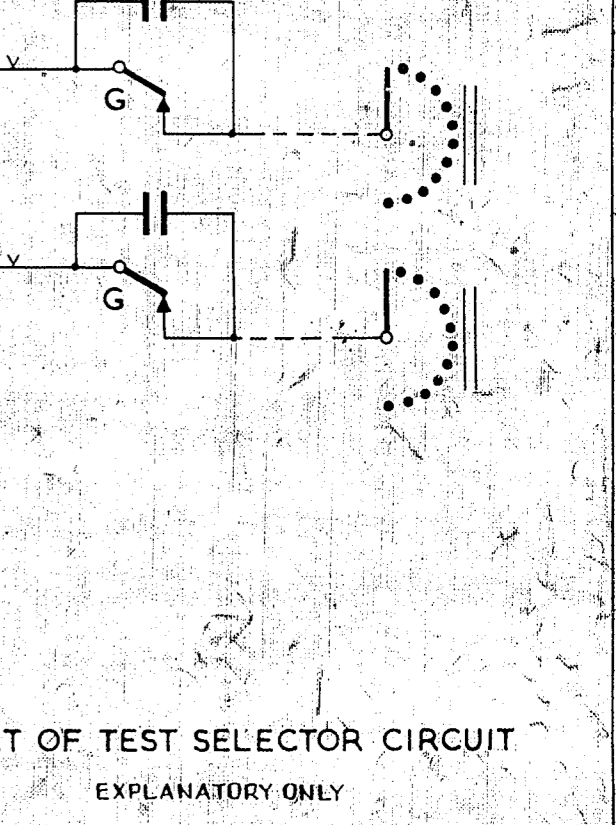
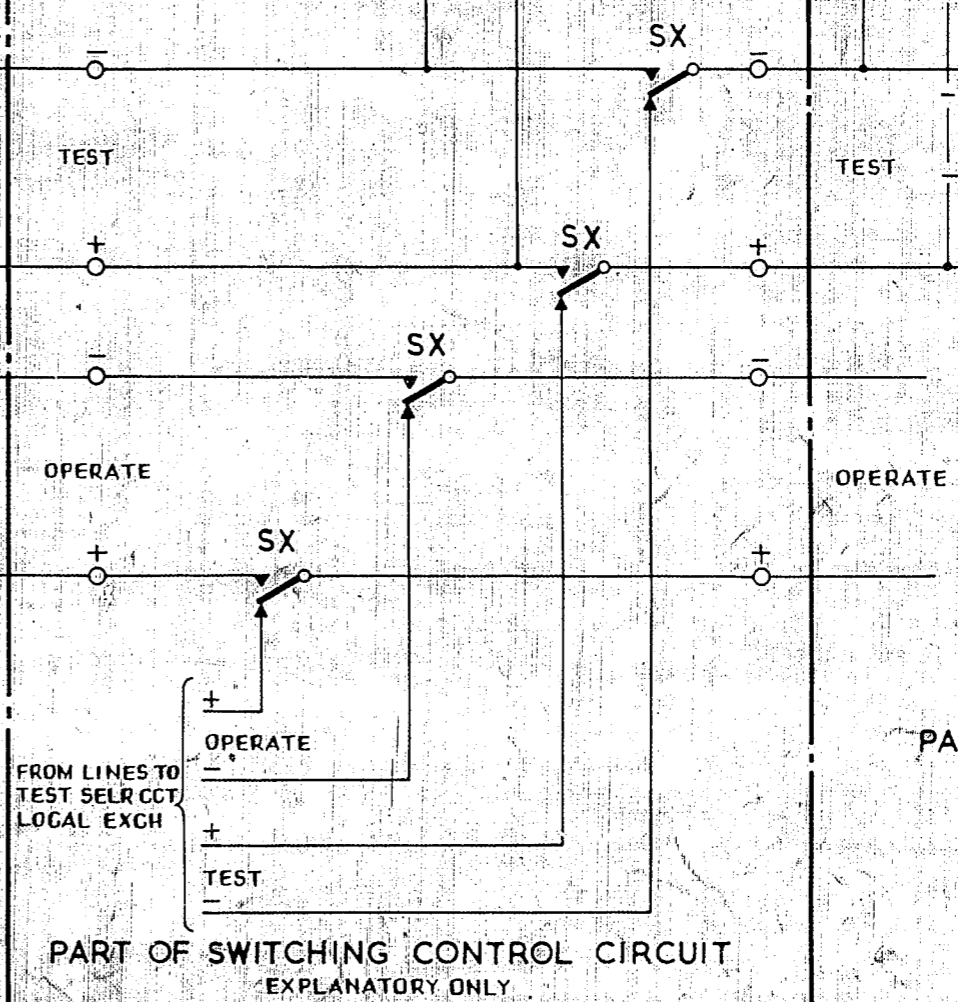
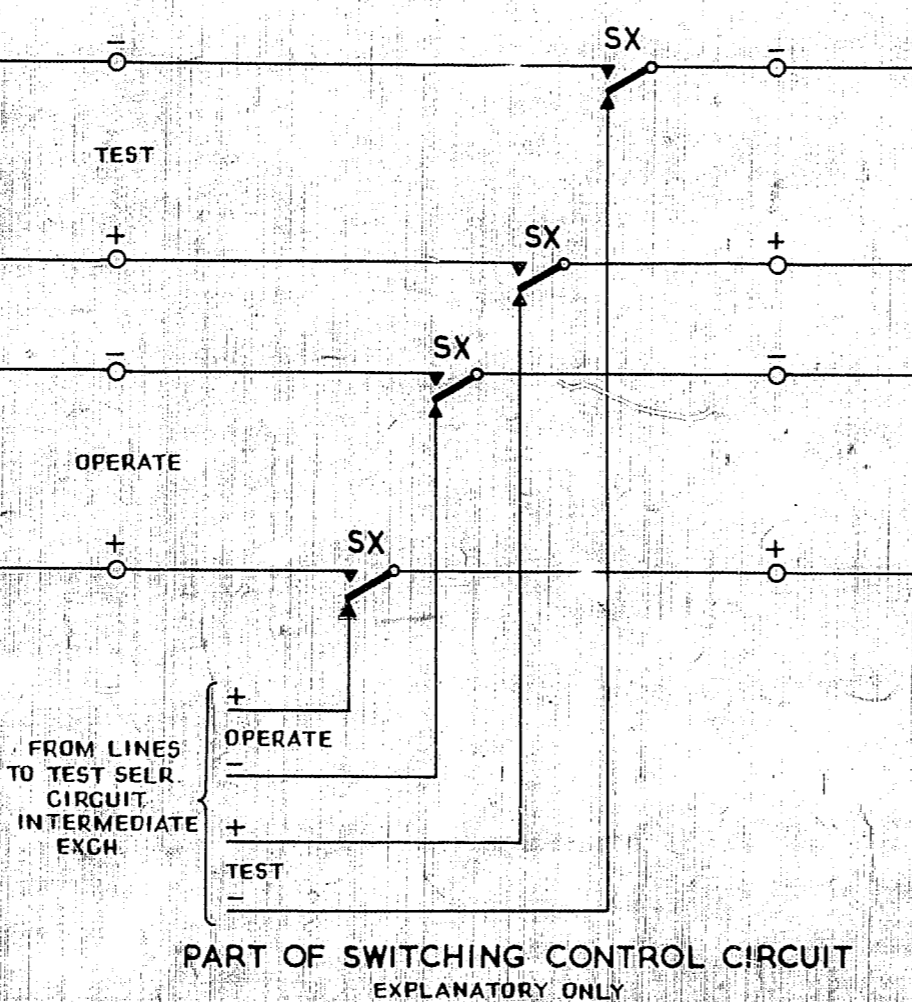
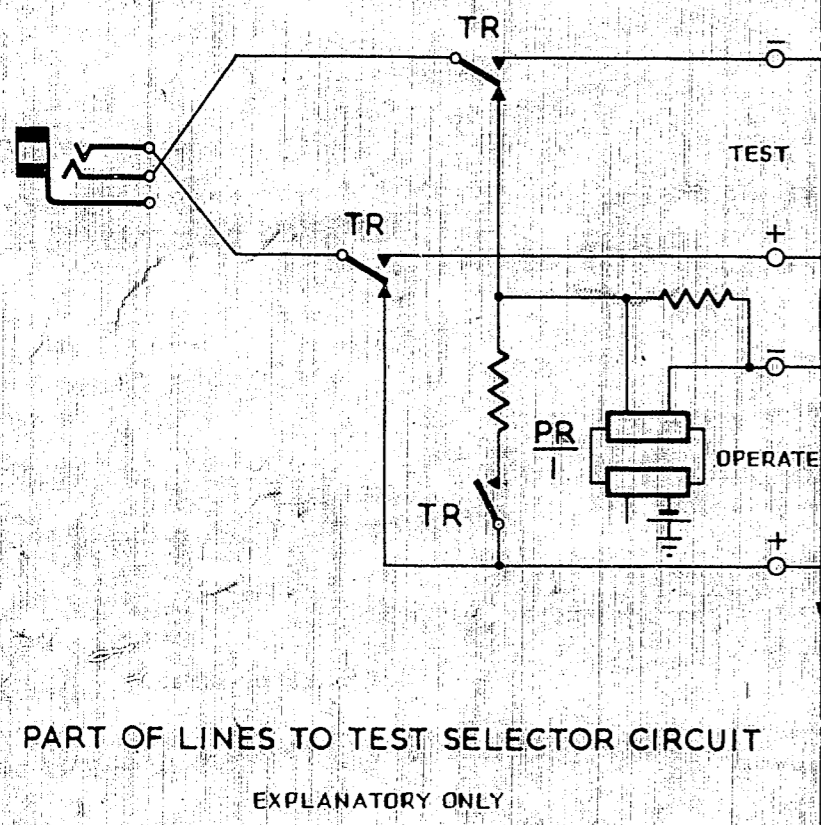
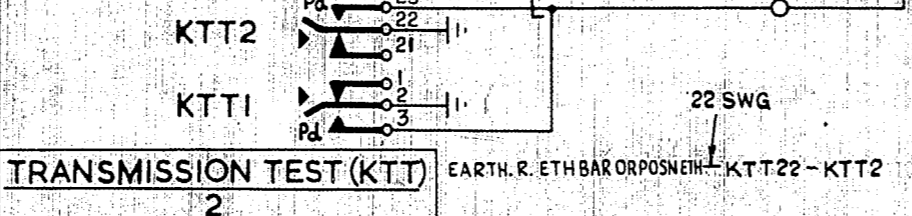


JUNCTION VIA M.D.F.

**FIG 2** REMOTE EXCHANGE M.A.R.



**FIG 3B** INTERMEDIATE EXCHANGE TEST DESK OR TEST RACK



**NOTES**

- FUSING -- FIG 2 1 5A FIG 3A FUSED WITH ASSOCIATED SWITCHING CONTROL CIRCUIT
- FIG 2 FITTED PER TEST SELECTOR AT REMOTE EXCHANGE WHEN NO LOCAL ACCESS IS PROVIDED. OTHERWISE FITTED PER SWITCHING CONTROL CIRCUIT
- WHEN SWITCHING CONTROL CIRCUIT IS NOT FITTED, DELETE CONNECTIONS SHOWN THUS AND ADD CONNECTIONS SHOWN THUS
- ALL WIRING TO BE 25 SWG UNLESS OTHERWISE SPECIFIED
- WHEN TRANSFER OF CONTROL TO CENTRAL EXCH. ONLY IS REQUIRED FIGS 3A & 3B ARE NOT PROVIDED. IN THIS CASE FIG 1 IS CABLED VIA JUNCTION DIRECTLY TO FIG 2. AND SWITCHING CONTROL CCT IS TO GBW 19010. WHEN TRANSFER OF CONTROL TO CENTRAL AND INTERMEDIATE EXCHS IS PROVIDED ALL FIGS ARE USED AND SWITCHING CONTROL CCT IS TO GBW 15320

6 THE TRANSMISSION TEST KEY SERVING A PARTICULAR LINES TO TEST SELECTOR CIRCUIT IS TO BE LOCATED IMMEDIATELY ABOVE THE LAMP, KEY AND JACK OF THAT CIRCUIT

TRANSMISSION TESTING OF SUBSCRIBERS APPARATUS (FROM CENTRAL EXCH OR FROM CENTRAL & INTERMEDIATE EXCHANGES) (GEO THERMAL AREAS)			
(58280)	10.2.67	8/8	
AMENDMENT PARTICULARS	ISSUE DATE	APPP	REF: GSI. 35. 7 (GBW 10610) 50V E
N.Z.P.O.	DRAWN	CHECKED	WIRING CIRCUIT
			SIZE M
			GBW 19100