

FIG. IE.
I.D.F. TERMINATIONS
O/G MULTIPLES

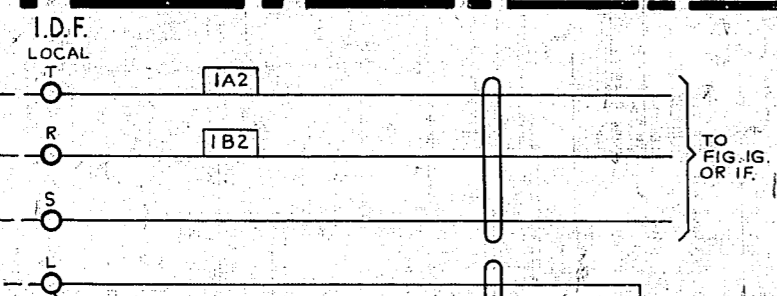
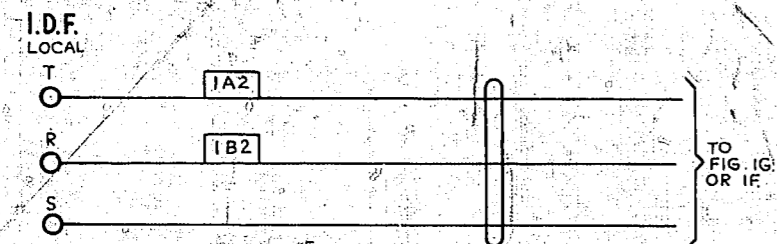


FIG. ID.
I.D.F. TERMINATIONS
I/C & B/W MULTIPLES

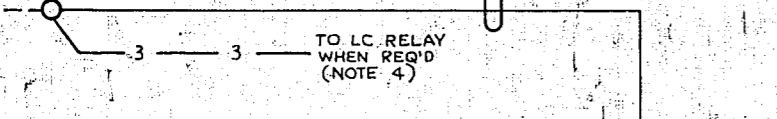
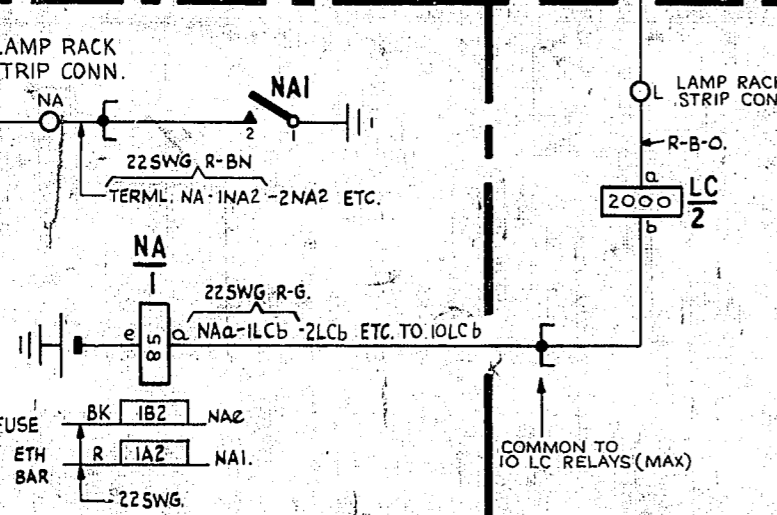


FIG. IH.
NIGHT ALARM RELAY
1 PER 10 LAMP RELAYS



NOTES

1. FUSING - FIG. IH 0-25A PER CCT. FIG. IF, FUSED WITH GBW 12511 (FIG. 1) OR EQUIVALENT.
2. UNLESS OTHERWISE SPECIFIED ALL WIRING TO BE 25 SWG.
3. WHEN DIAGRAM IS USED FOR TURRET ANS. RELAYS USE FIG. IB AND CONNECTIONS THIS - 2 - DELETING CONNECTIONS SHOWN THUS - 1 - WHEN DIAGRAM IS USED FOR TEST DESK ANS. RELAYS DO NOT USE FIG. IB, BUT PROVIDE CONNECTIONS SHOWN - 1 - IN LIEU OF THOSE SHOWN - 2 -
4. ADDITIONAL LC RELAYS TO BE CABLED TO LI TAG. WHEN MORE THAN 20 LAMP JACK APPEARANCES ARE PROVIDED, LC RELAYS WHICH ARE CONNECTED TO THE SAME L TERMINAL MUST BE CONNECTED TO THE SAME NA RELAY COMMON.
5. KA IS A DOUBLE THROW KEY AND SERVES TWO CIRCUITS. TABLE 'A' SHOWS ALLOCATION OF SPRING NUMBERS FOR ALL APPEARANCES.
6. RESISTORS R1 TO BE EQUIPPED AS EVENLY AS POSSIBLE IN THE TURRETS WHICH THEY SERVE. E.G. 1ST APPEARANCE (4 RESISTORS) 2ND APP. (5) 3RD APP. (4) 4TH APP. (5) [WHEN R1 SERVES 4 APPEARANCES WITH 18 CIRCUITS EQUIPPED PER TURRET]
7. LAMPS WILL BE INSERTED IN THE ANSWERING MULTIPLE AT SELECTED APPEARANCES ARRANGED AS FAR AS POSSIBLE IN PAIRS TO DISTRIBUTE LOADS BETWEEN ODD AND EVEN LEADS.
8. LENGTH OF CABLE BETWEEN LAMP RACK TERMINALS AND MID-POINT OF LAMP MULTIPLE NOT TO EXCEED 250 YARDS, WHERE N IS THE NUMBER OF ODD OR EVEN LAMP APPEARANCES PER ODD OR EVEN FEED PER CIRCUIT.
9. CABLE REPLACES LOCAL WIRE WHEN TEST DESK TERMS ARE NOT PROVIDED. CABLE TO BE LOOPED ON JACKS.

NZPO
DRAWN
CHECKED
WIRING
CIRCUIT
GBW 16700
MULTIPLE ANSWERING RELAYS & TURRET TEST DESK TYPE 2000
ISSUE DATE APR 21 5 05 AM
REF. GBW 16940 OR EQUIVALENT

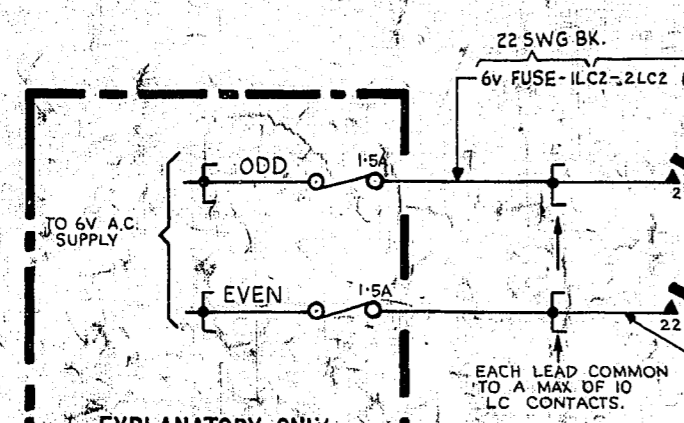


FIG. IA.
LAMP RELAY
1 PER 20 LAMP APPEARANCES.

FIG. IG. (TEST DESK MISC SECTION.)
MULTIPLE JACKS

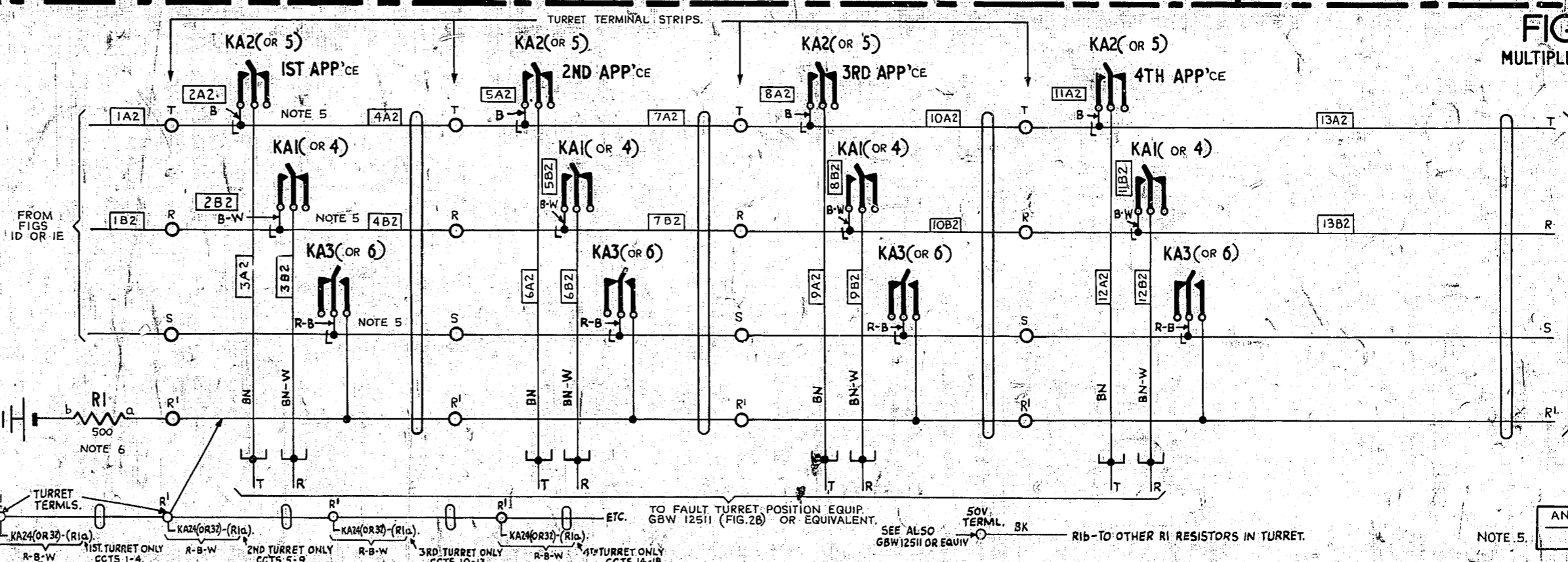
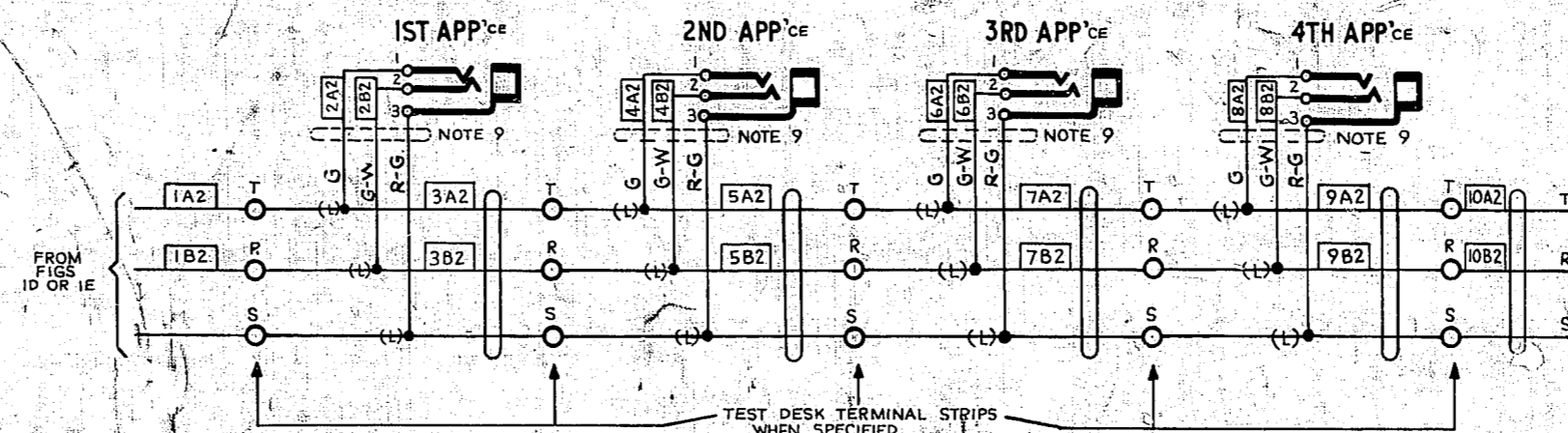


TABLE A. NOTE 5

KA1	KA2	KA3
3 2 1	23 22 21	26 25 24
KA4	KA5	KA6
4 5 6	27 28 29	30 31 32

FIG. IB. NOTE 3

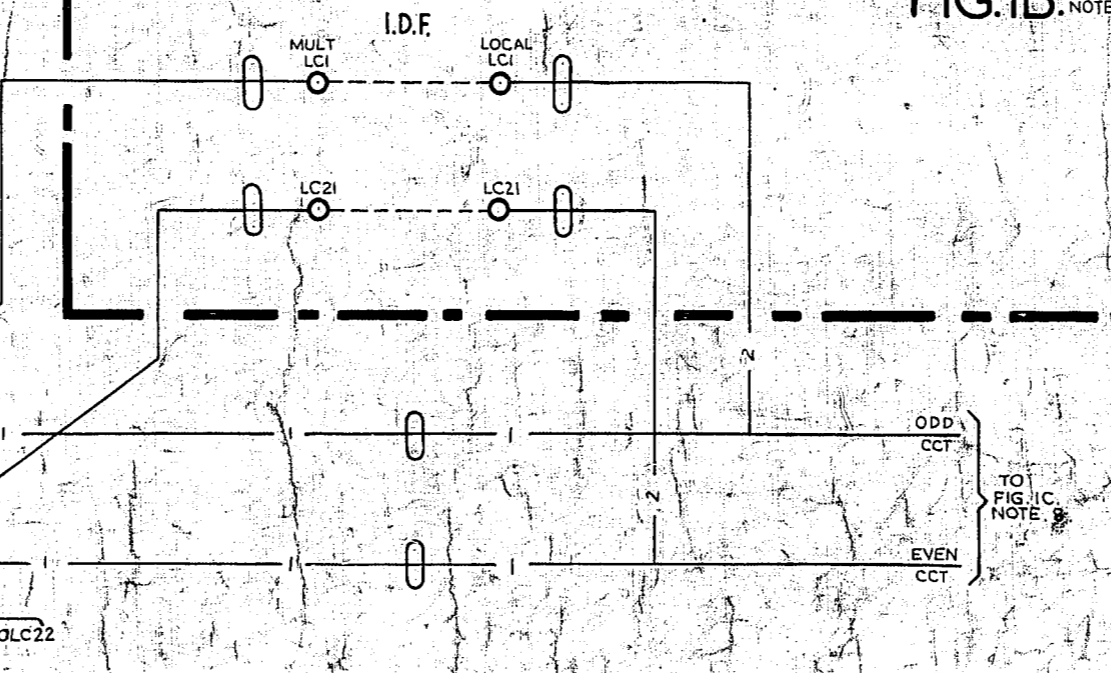
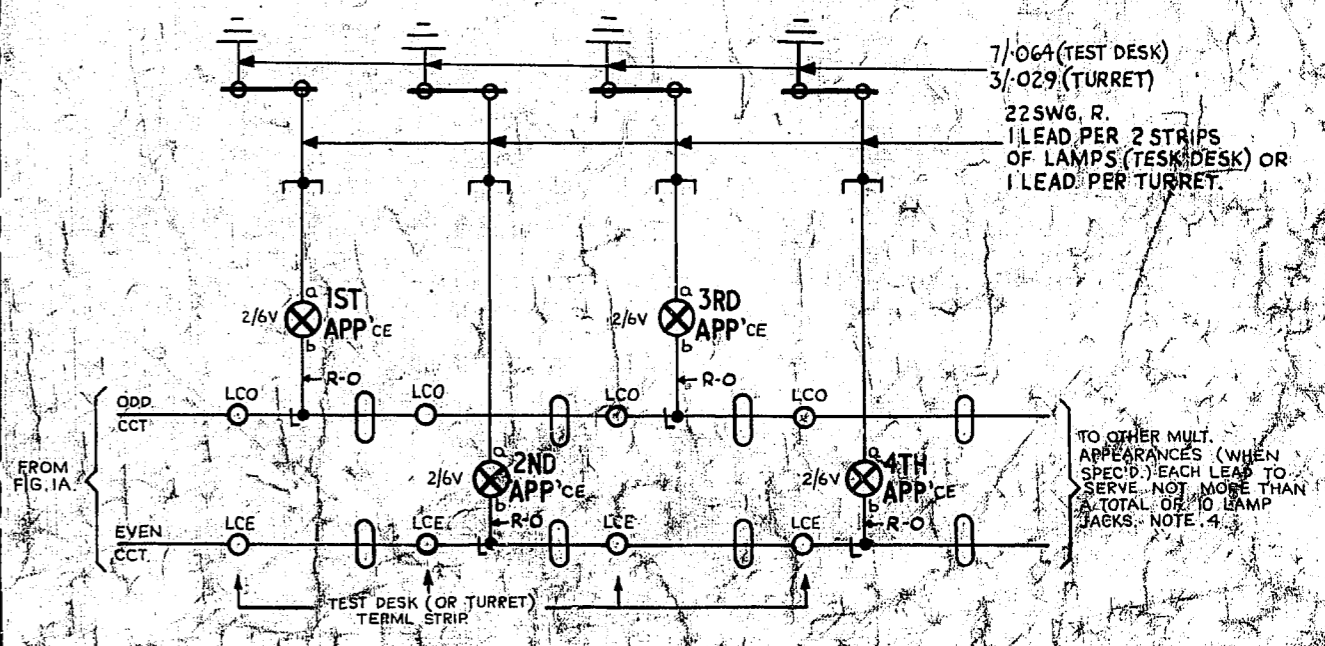


FIG. IC.
MULTIPLE LAMP. NOTE 7.
(TEST DESK MISC SECTION OR TURRET)



GBW 16700