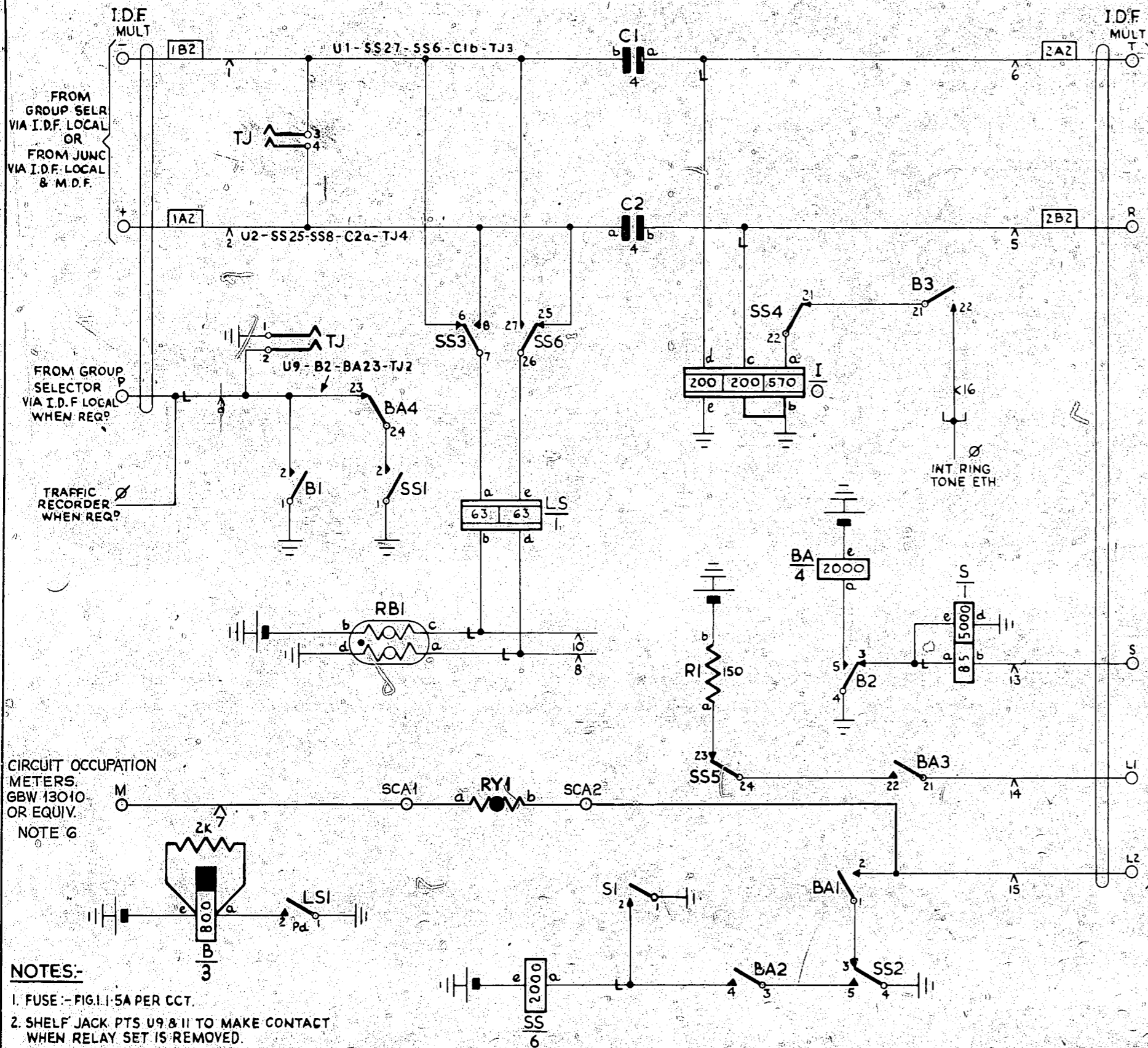


FIG.1. R.S.R



CIRCUIT OCCUPATION METERS. GBW 13010 OR EQUIV. NOTE 6

NOTES:-

1. FUSE - FIG.1-5A PER CCT.
2. SHELF JACK PTS U9 & 11 TO MAKE CONTACT WHEN RELAY SET IS REMOVED.
3. FOR WIRING Ø SEE GBW 10640 OR EQUIV.
4. ALL WIRING TO BE 25 SWG. UNLESS OTHERWISE SPECIFIED.
5. THE L1 & L2 LEADS MAY BE ROUTED VIA LAMP LEAD SWITCHING TO GBW 12710 FIG.2. WHEN NIGHT SWITCHING FROM ONE ANS TERMINATION TO ANOTHER IS REQD. WITHIN THE SAME ETH. WHEN NIGHT SWITCHING IS REQD. FROM AN ANS TERMINATION WITH BATT CONNECTED LAMPS/LAMP RELS TO ONE WITH ETH. CONNECTED LAMPS/LAMP RELS TWO CN RELAY CHANGE OVER (GBW 12710 FIG.2) ARE REQD. PER CCT. NIGHT SWITCHED.

BATT BK 22 S.W.G. FUSE 3B2 U12.
 ETH R 22 S.W.G. ETH BAR 3A2 U11.
 BATT W U12 - RB1b - Be - SSe - BAe - Rib.
 ETH R U11 - RB1d - LS1 - B1 - B4 - Sd - S1 - SS1 - SS4 - Ib - Ie - TJ1
 6. METER LEAD TO BE CONNECTED DIRECTLY TO 2300- METER ONLY.

FIG.2. TEST DESK MISC SECTION. EXPLANATORY ONLY

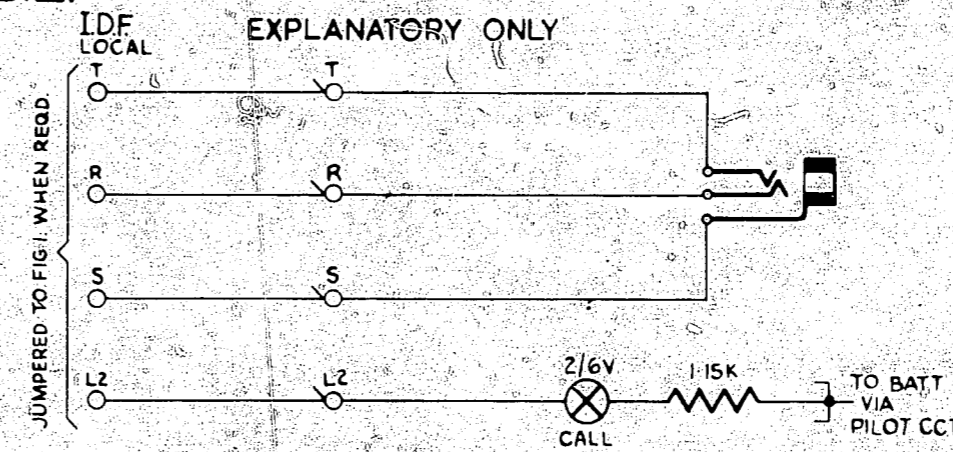


FIG.3. TEST DESK MISC SECTION. EXPLANATORY ONLY

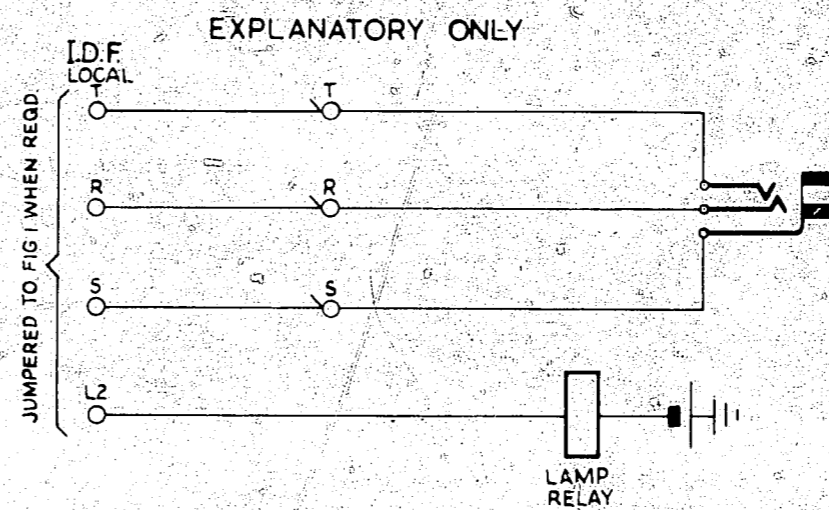


FIG.4. FAULT SERVICE TURRETS. EXPLANATORY ONLY

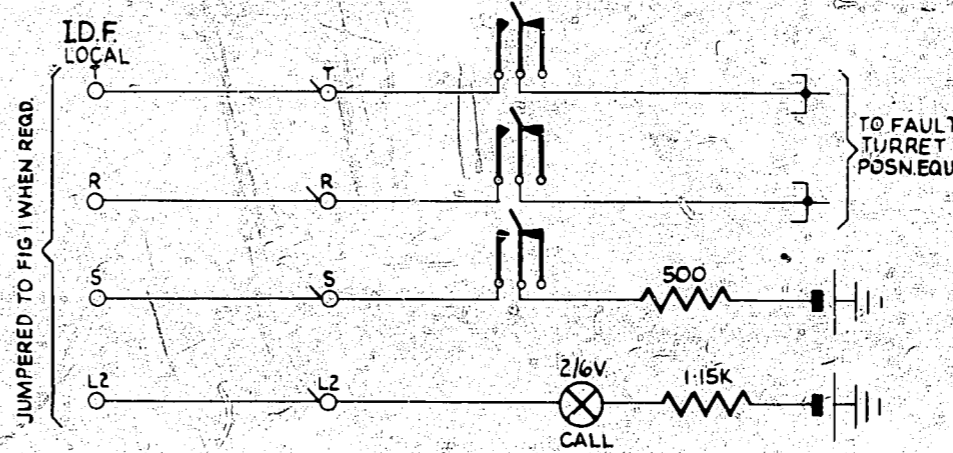


FIG.5. FAULT SERVICE TURRETS. EXPLANATORY ONLY

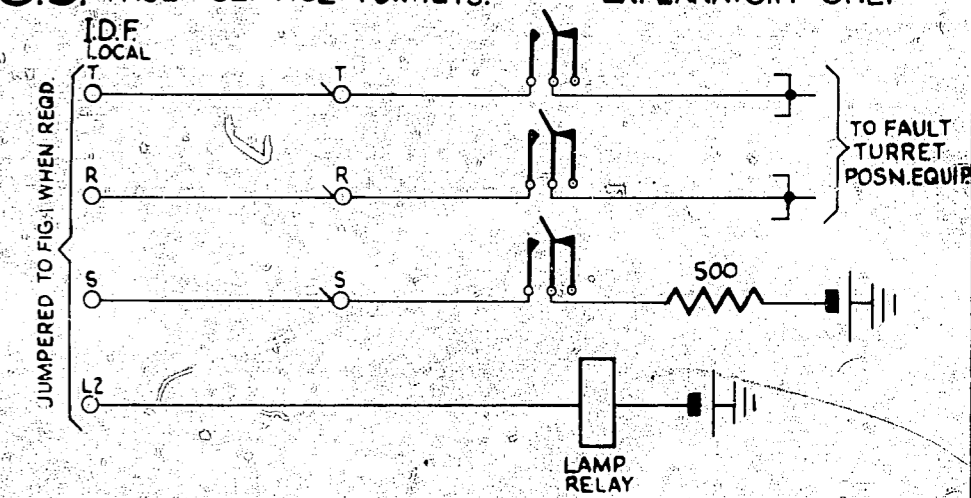


FIG.7. DIRECTORY SERVICE & PRICING DESK TURRETS. EXPLANATORY ONLY

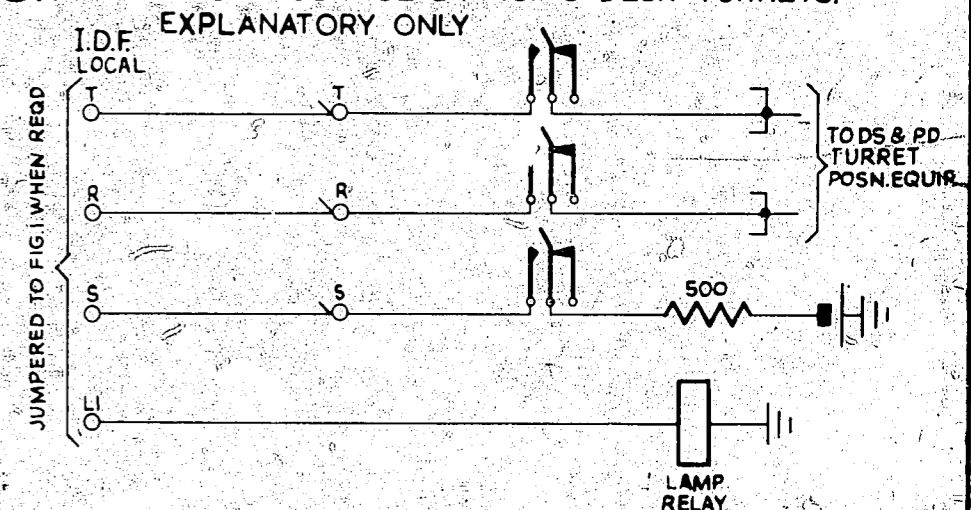
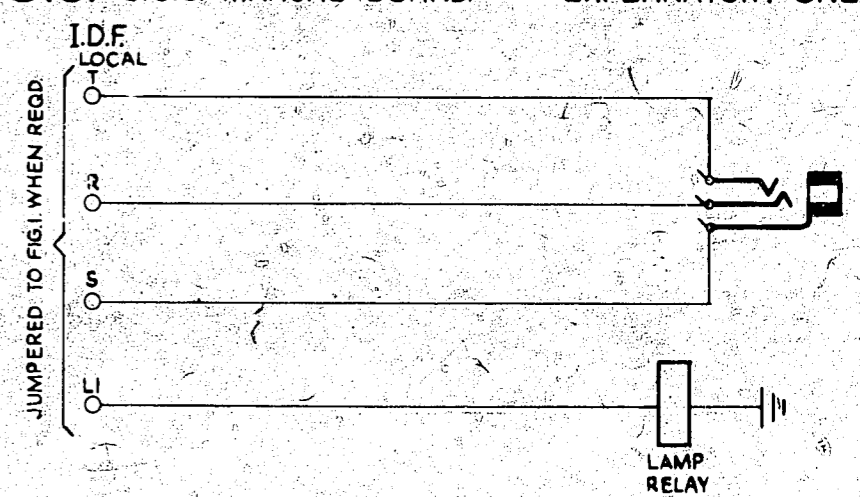


FIG.6. S.C.S. MANUAL BOARD. EXPLANATORY ONLY



				SELECTOR LEVEL RELAY SET SPECIAL SERVICES S.C.S.			
PREPARED FROM GBW 16650 ISS.3 OF 31-1-75 (133498)				A	16-8-77	RED	
AMENDMENT PARTICULARS				ISSUE	DATE	APP'D	REF:-
NZPO	21-10-65	DRAWN H.B.B.	CHECKED	WIRING	CIRCUIT		GBW 16650 MOD. C
							SIZE M 50V S

