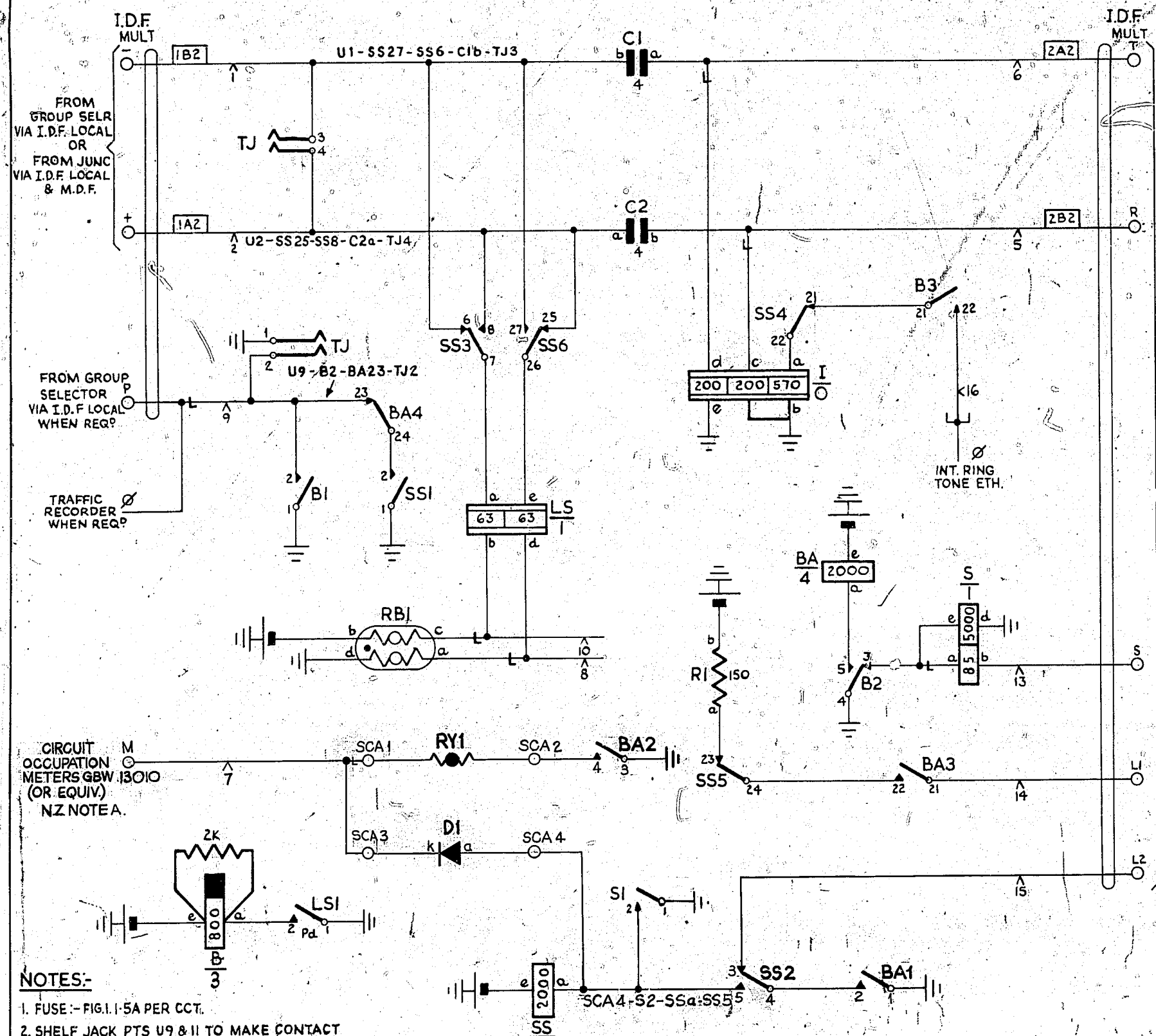


**FIG.1. R.S.R**

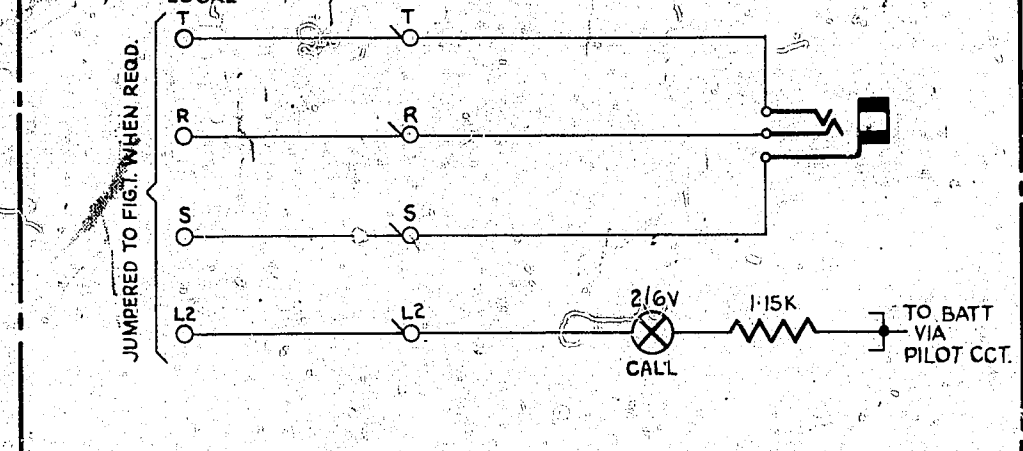


- NOTES:-**
1. FUSE - FIG.1.1-5A PER CCT.
  2. SHELF JACK PTS U9 & 11 TO MAKE CONTACT WHEN RELAY SET IS REMOVED.
  3. FOR WIRING Ø SEE GBW 10640 OR EQUIV.
  4. ALL WIRING TO BE 25SWG UNLESS OTHERWISE SPECIFIED.
  5. THE L1 & L2 LEADS MAY BE ROUTED VIA LAMP LEAD SWITCHING TO GBW 12710 FIG.2. WHEN NIGHT SWITCHING FROM ONE ANS TERMINATION TO ANOTHER IS REQD. WITHIN THE SAME EXCH. WHEN NIGHT SWITCHING IS REQD. FROM AN ANS TERMINATION WITH BATT. CONNECTED LAMPS/LAMP RELS TO ONE WITH ETH. CONNECTED LAMPS/LAMP RELS TWO CN RELAY CHANGE OVER (GBW 12710 FIG.2) ARE REQD. PER CCT. NIGHT SWITCHED.

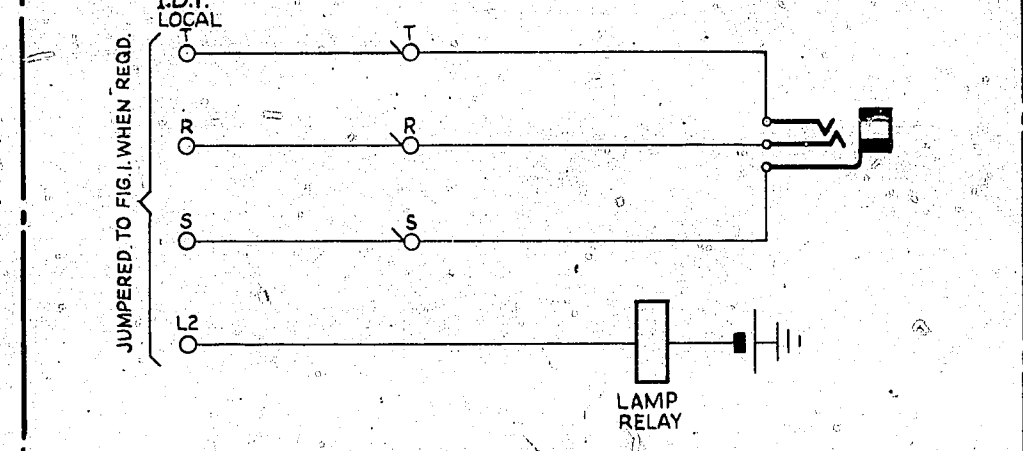
**BATT BK 22 S.W.G. FUSE** 3B2 U12..  
**ETH R 22 S.W.G. ETH BAR** 3A2 U11.  
**BATT W U12-RB1b-Be-Sse-BAe-Rib..**  
**ETH R U11-RB1d-LS1-B1-B4-Sd-S1-SS1-BA1-BA3-1b-1e-TJ**

**NZ NOTES**  
 A METER LEAD TO BE CONNECTED DIRECTLY TO 2300 OHM METER ONLY

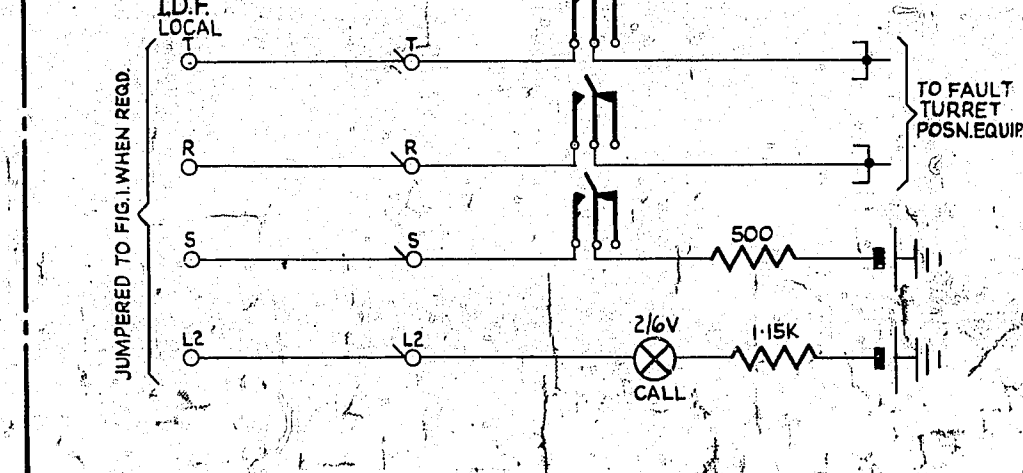
**FIG.2. TEST DESK MISC SECTION. EXPLANATORY ONLY**



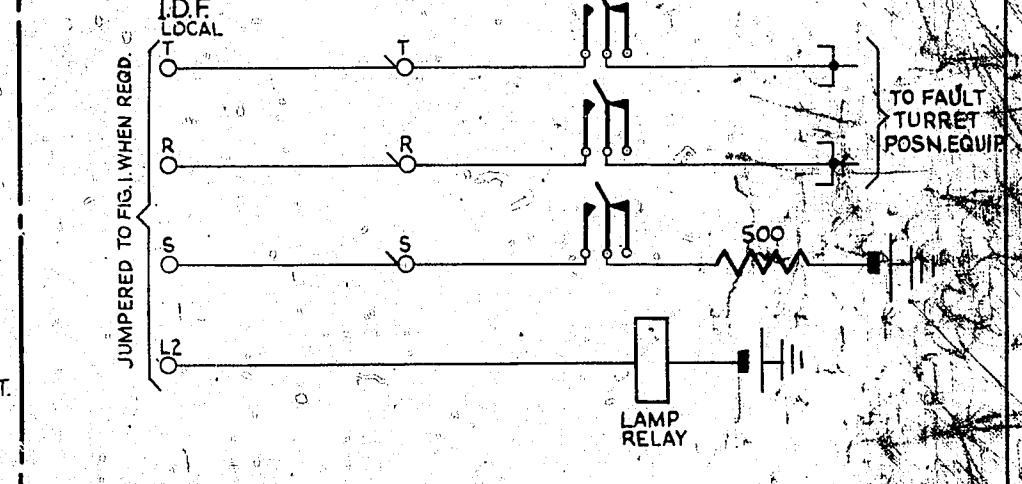
**FIG.3. TEST DESK MISC SECTION. EXPLANATORY ONLY**



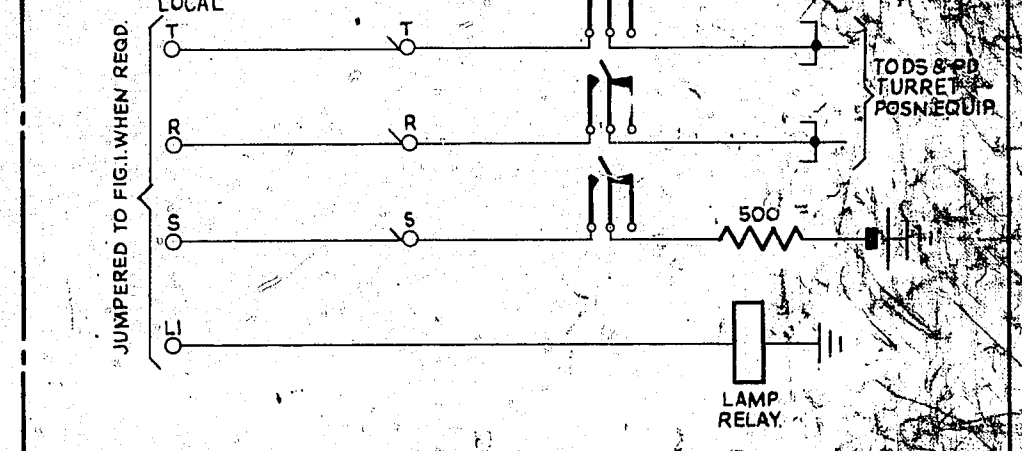
**FIG.4. FAULT SERVICE TURRETS. EXPLANATORY ONLY.**



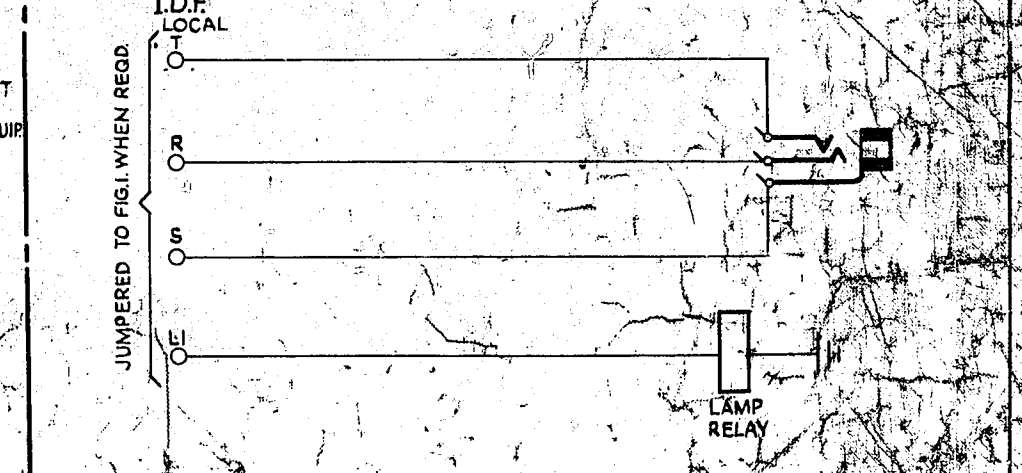
**FIG.5. FAULT SERVICE TURRETS. EXPLANATORY ONLY**



**FIG.7. DIRECTORY SERVICE & PRICING DESK TURRETS. EXPLANATORY ONLY**



**FIG.6. S.C.S. MANUAL BOARD. EXPLANATORY ONLY**



AMENDMENT PARTICULARS		ISSUE DATE	APP	REF	SIZE	50V
(34053)		A	24/57	BS-H.		
DRAWN H.B.		CHECKED	WIRING	CIRCUIT	GBW 16650 MOD B	
N.Z. PO						

0  
5  
10  
15  
20  
25