

FIG. 1A

FUSE ALARM

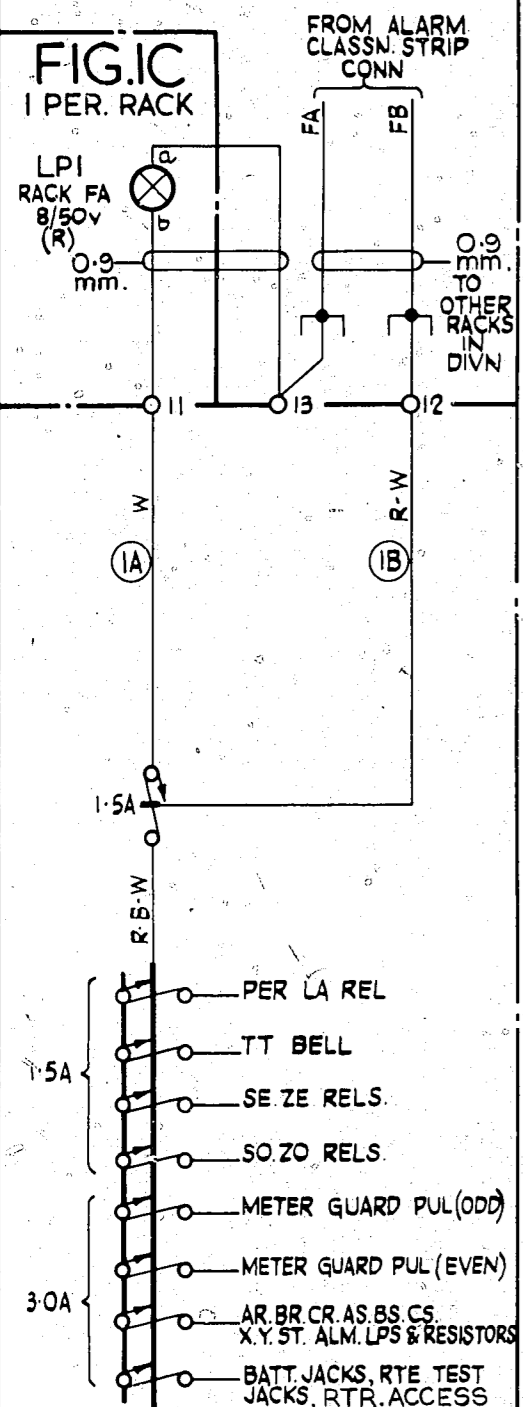


FIG. 1B
1 PER. RACK

FIG. 2

BATTERY JACKS
1 PER. RACK

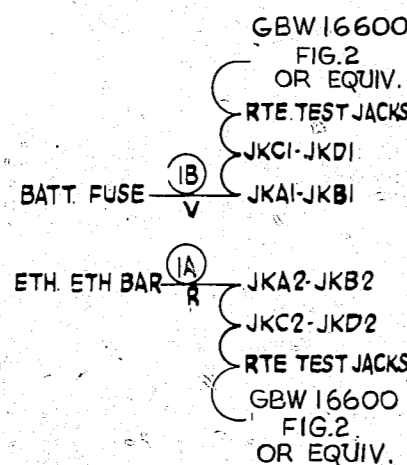
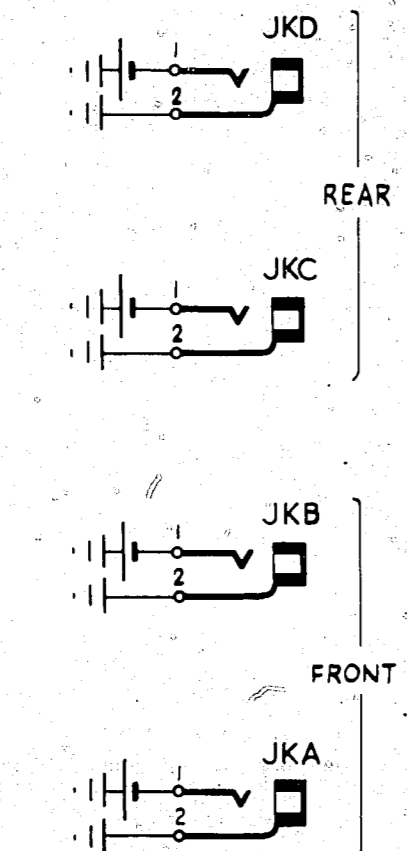


FIG. 3A

RELEASE ALARM ETH.
(PERIOD OF DELAY 9 SECS)

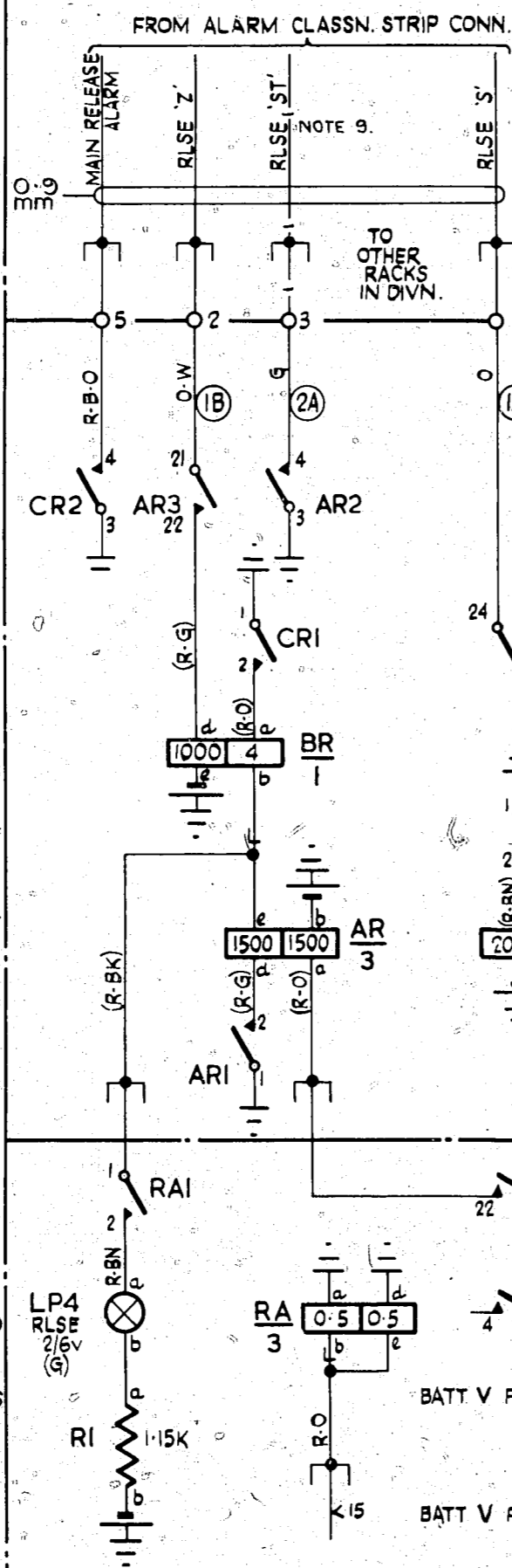


FIG. 3C
1 PER. 20 SELECTORS

FIG. 3D
1 PER. RACK

FIG. 4D
1 PER. RACK

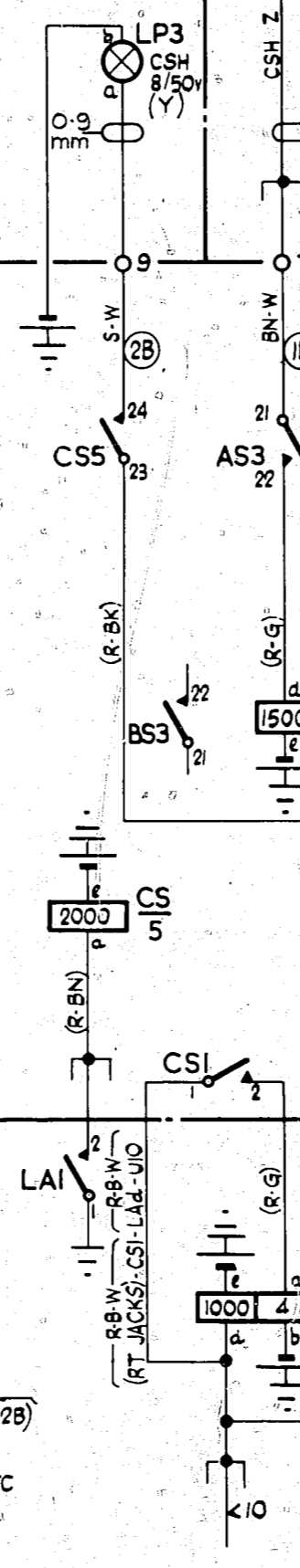
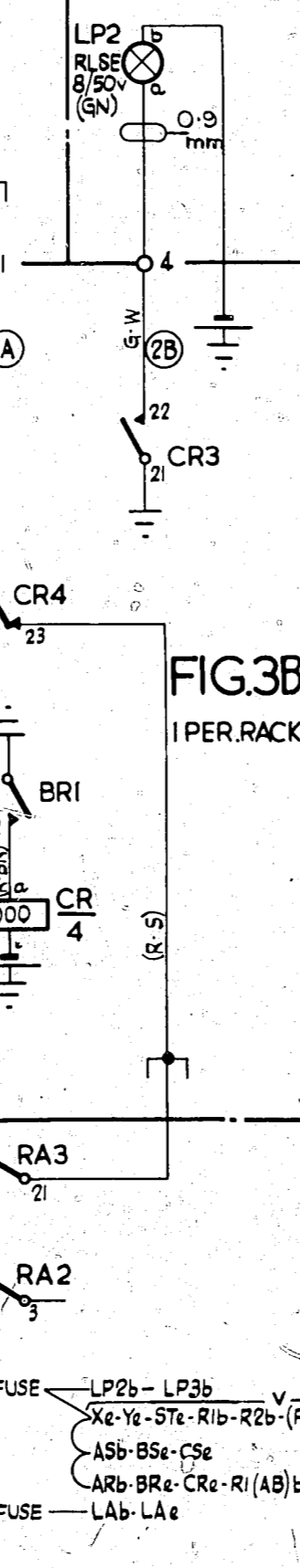


FIG. 4A

SUPY. ALARM BATT. (CSH)
(PERIOD OF DELAY 6 MINS)

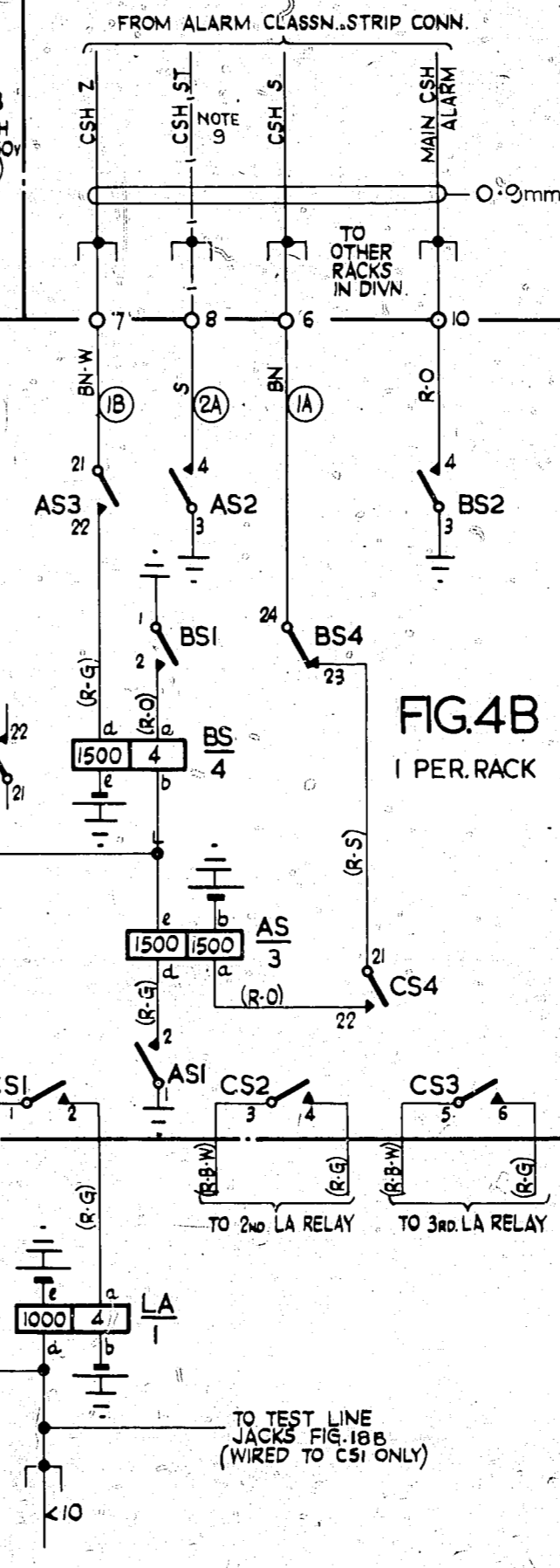


FIG. 4C
1 PER. 20 SELECTORS

FIG. 5A

INT. RINGING DISTRIBUTION

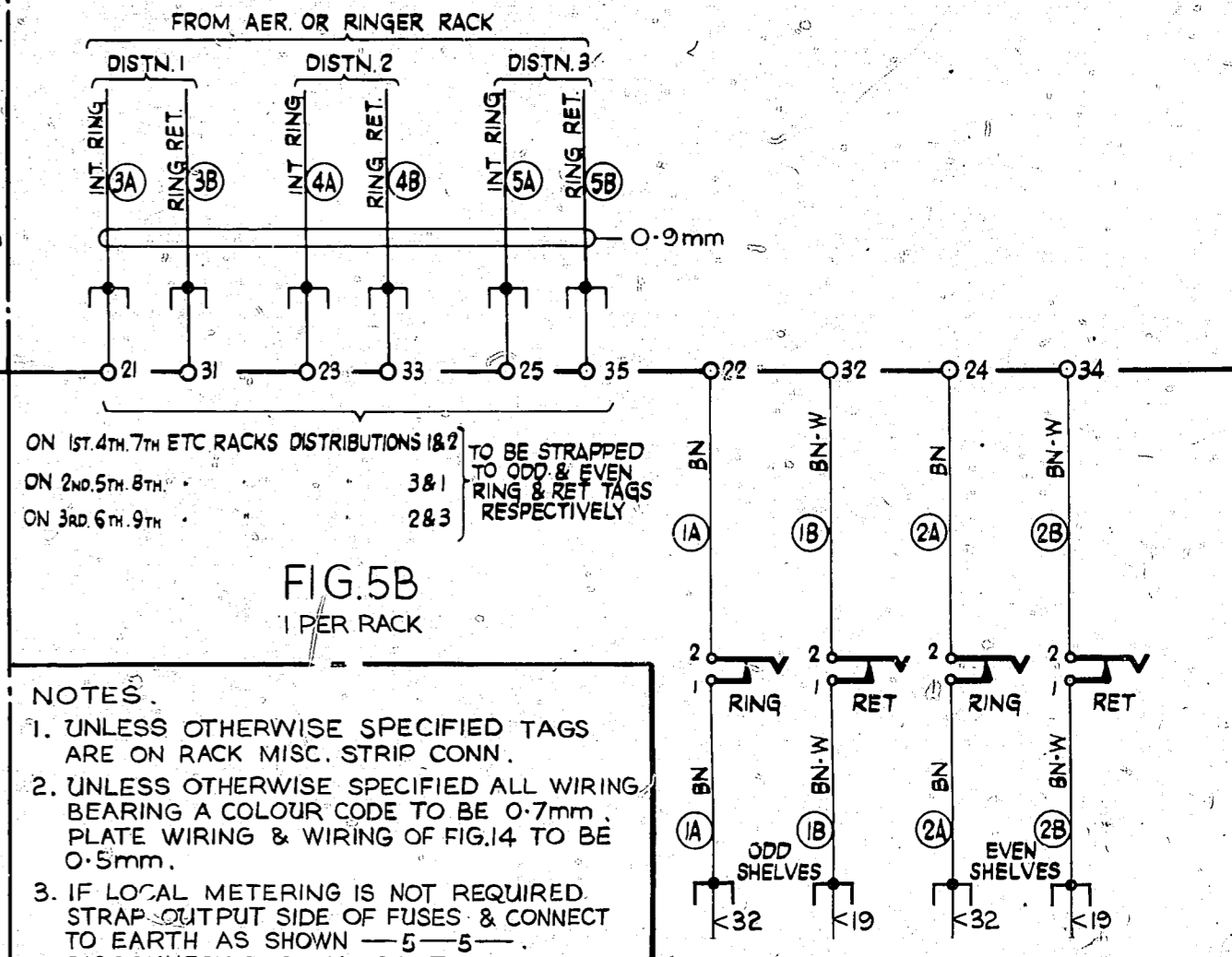
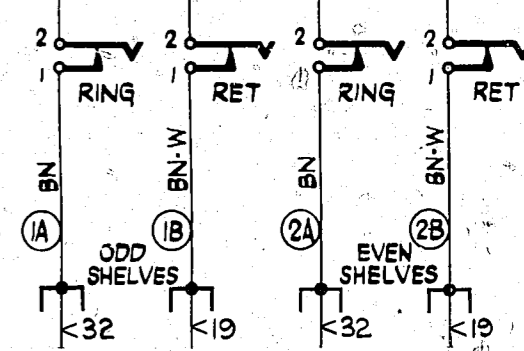


FIG. 5B
1 PER. RACK



- NOTES:
- UNLESS OTHERWISE SPECIFIED TAGS ARE ON RACK MISC. STRIP CONN.
 - UNLESS OTHERWISE SPECIFIED ALL WIRING BEARING A COLOUR CODE TO BE 0.7mm PLATE WIRING & WIRING OF FIG. 14 TO BE 0.5mm.
 - IF LOCAL METERING IS NOT REQUIRED STRAP OUTPUT SIDE OF FUSES & CONNECT TO EARTH AS SHOWN — 5 — 5 — DISCONNECT POSITIVE BATTERY LEAD BOTH AT THE FINAL SELR. RACK & AT THE A.E.R., FPR OR RER.
 - ON THE FIRST RACK ONLY OF EACH GROUP OF RACKS ON WHICH THE SAME LEVELS ARE SPARE STRAP P2 11TH STEP TAG ASSD. WITH SPARE LEVELS TO CORRESPONDING 'OM' TAGS THUS — 4 — 4 — WORKING LEVELS CABLED THUS — 3 — 3 —
 - JUMPER CONNECTIONS BETWEEN EARTH & SPARE LEVEL OUTLETS 4-20 & BETWEEN EARTH & SPARE OUTLETS ON WORKING LEVELS SHALL BE MADE ONLY ON THE 1ST. RACK ON WHICH THE PARTICULAR LEVEL MULTIPLE APPEARS. EARTH SHALL NOT BE CONNECTED TO THE P-WIRES OF OUTLETS 19 & 20 ON LEVEL 1.
 - LEVEL NUMBERING 0, 1, 2, 3, 4, 5, 6, 7, 8, 9 SHOWN CORRESPONDS TO REVERSE NUMBERED N.Z. DIAL EQUIVALENT NUMBERING TO STANDARD B.P.O. DIAL IS 0, 9, 8, 7, 6, 5, 4, 3, 2, 1, RESPECTIVELY.
 - FOR TABLE SHOWING ALLOCATION OF TAGS SEE SHT. 4.
 - TO BUSY AN O/G CCT. THAT IS T.O.S. TRANSFER LINK TO P1 & ETH OR P2 & ETH.
 - WHEN A CONTINUOUSLY RUNNING ALARM DELAY SET IS PROVIDED 'ST' LEAD IS NOT REQUIRED.
 - ON EARLY EQUIP. NEG. BATT. COLOUR WAS BK OR WH. POS. BATT. WAS R-B.
 - ON LEVEL 1 ONLY THE P2 11TH STEP LEAD IS CONNECTED VIA ROUTINER TEST LINE ACCESS RELAYS GBW 16600 FIG. 2 (WHEN FITTED) AS SHOWN — 1 — 1 — WHEN NOT FITTED PROVIDE STRAP SHOWN — 2 — 2 —
 - WHEN ROUTINER ACCESS RELAYS GBW 16600 FIG. 2 OR EQUIV. ARE FITTED USE FIG. 18D & WIRING — 6 — WHEN ROUTINER ACCESS RELAYS GBW 16600 FIG. 2 OR EQUIV. ARE NOT FITTED USE FIG. 18C & WIRING — 7 —

NOTES 11 & 12 ADDED	NOTES 3 - 5 (99533)	6	25-5-73	B.S.H.	COMMON SERVICES RACK WIRING 200 LINE FINAL SELECTORS WITH TOLL FACILITIES 11-20 PBX.
AMENDED. WIRE GAUGE SHOWN METRIC.					
NOTES 9 & 10 ADDED.		5			
NZ NOTE A ADDED TO SHT 2	(99944)	6A	27-8-73	B.S.H.	
AMENDMENT PARTICULARS			ISSUE DATE	APPD	SIZE M 50v W
NZPO	DRAWN	CHECK'D	WIRING	CIRCUIT	GBW 16160
					SHT 1-4

0
5 Centimeters
10
15
20
25

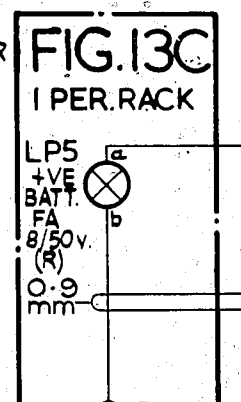
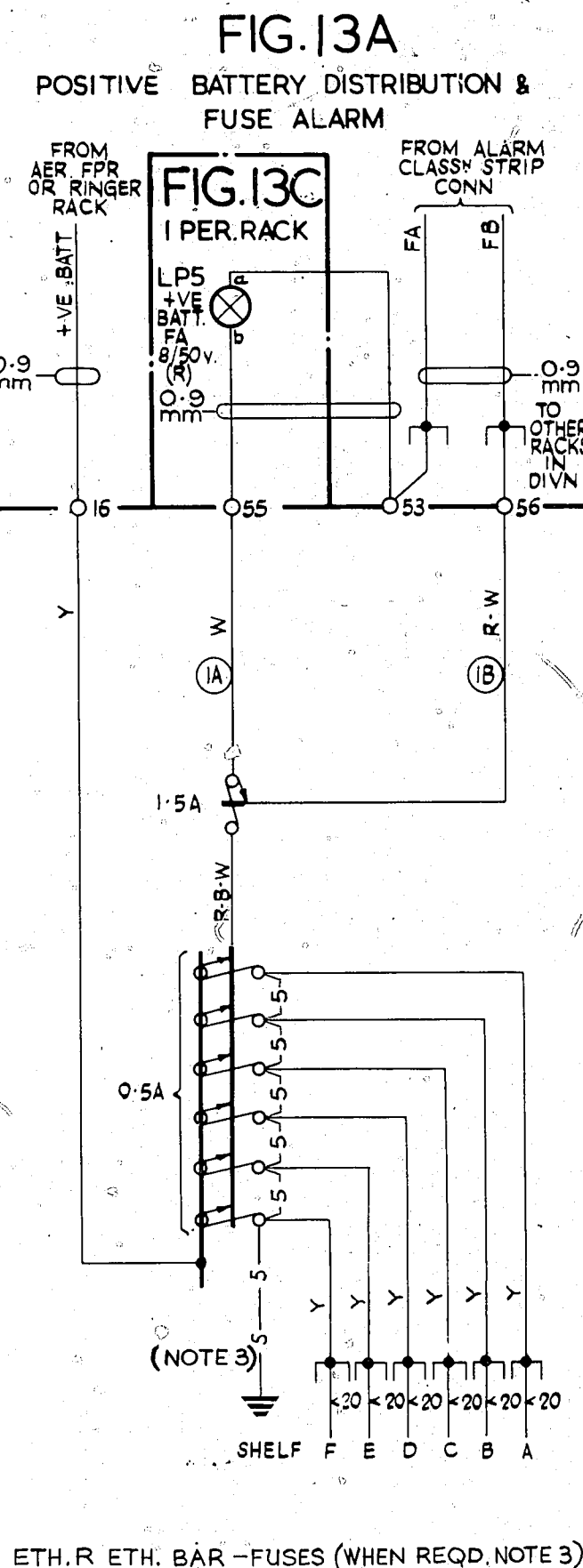
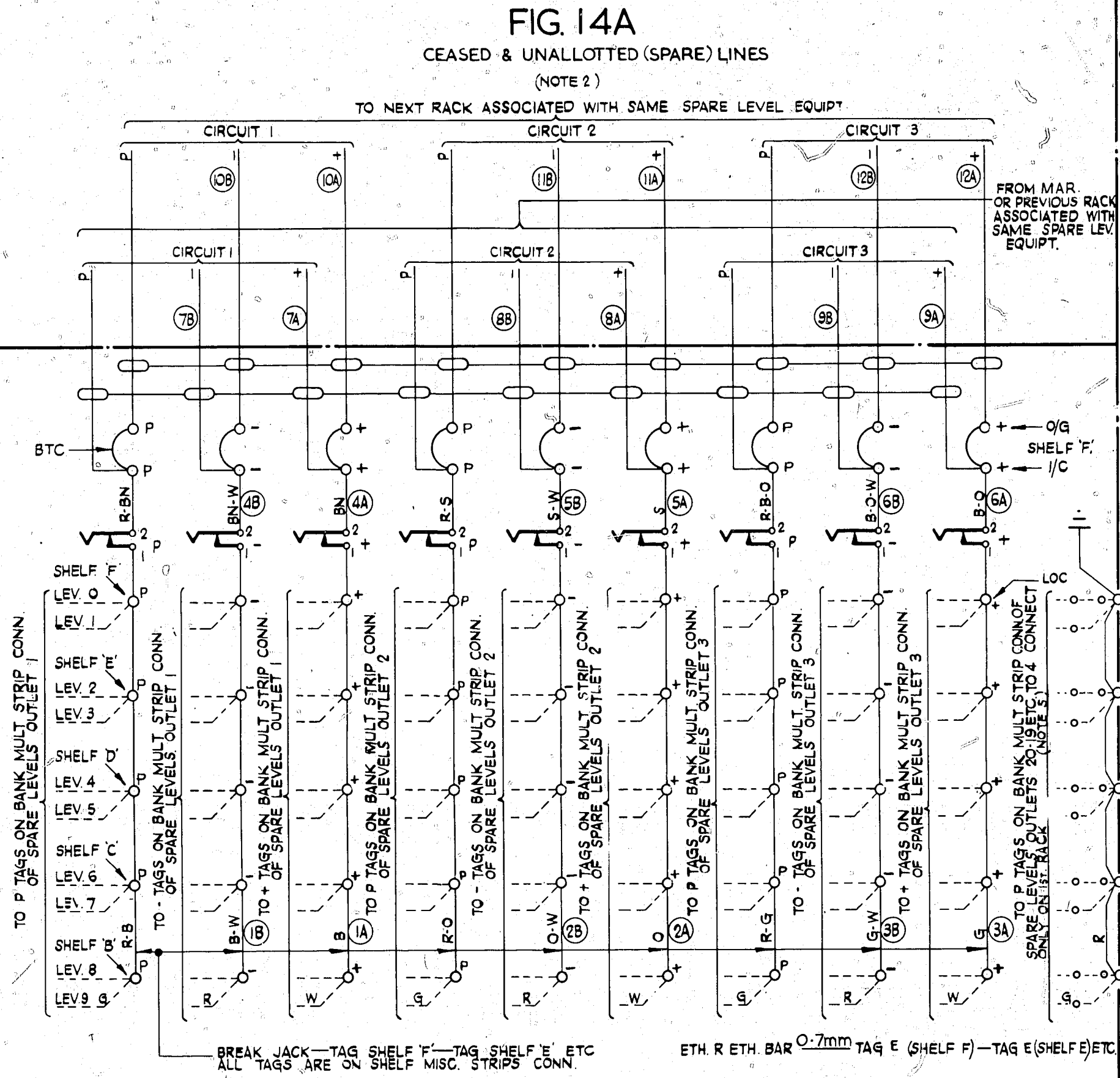


FIG. 13B
I PER. RACK



ALLOCATION OF NOTCHES ON TAGS ON SHELF MISC. STRIP CONN.

SHELF	BACK NOTCH	CENTRE NOTCH	FRONT NOTCH
O/G	NIL	O/G. TO NEXT RACK	BTC. COMMON
F	O/G TO ISOLATION JACKS	I/C FROM IDF OR PREV RACK	" "
LOC	I/C FROM ISOLATION JACKS	1ST. SPARE LEV JUMPER	2ND SPARE LEV. JUMPER
C,D & E	I/C FROM UPPER SHELF	" "	" "
B	I/C FROM SHELF C	" "	" "

FIG. 14B
I PER. RACK

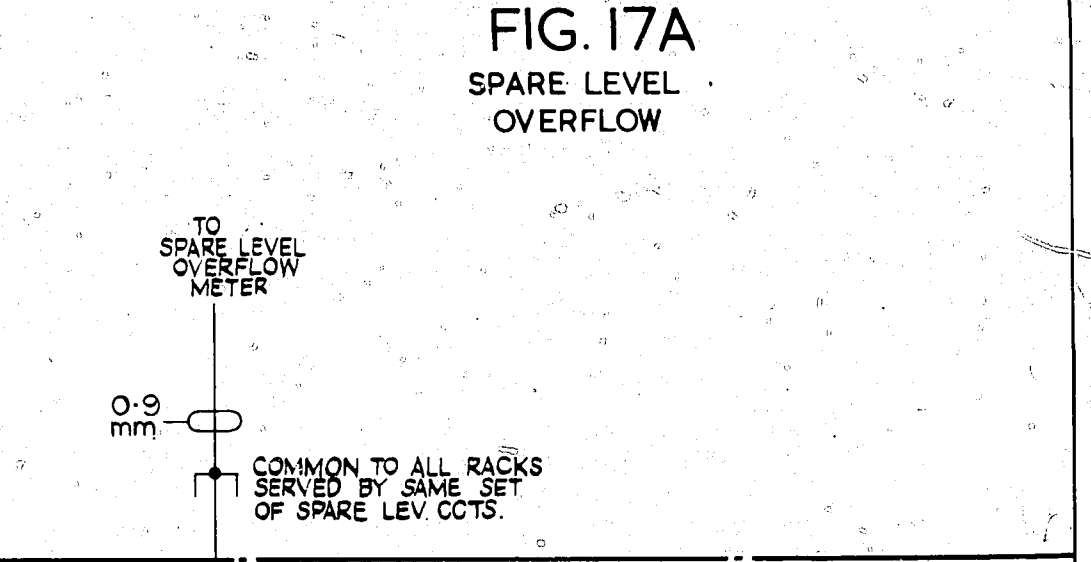
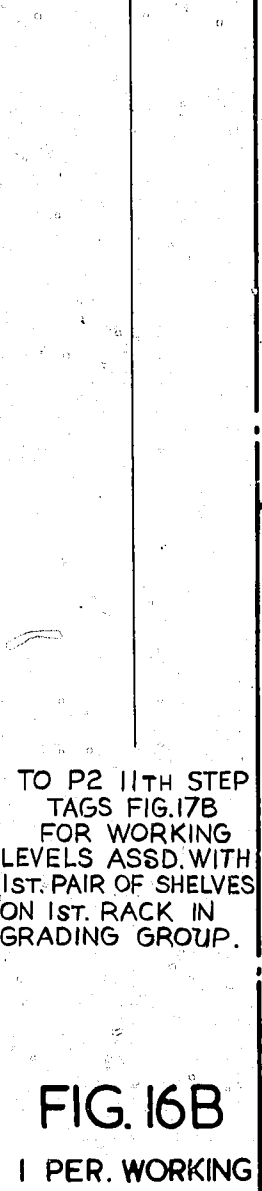
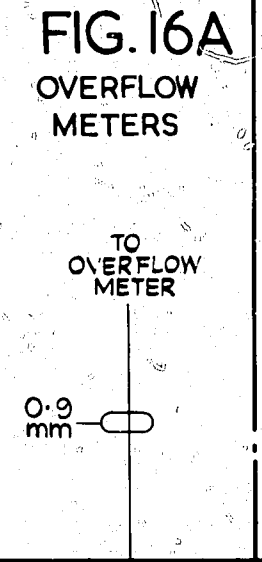
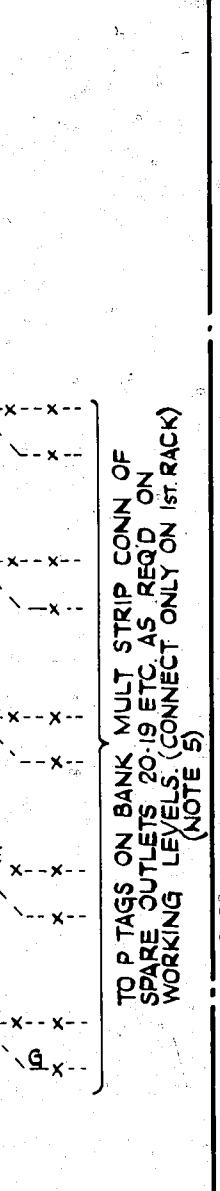
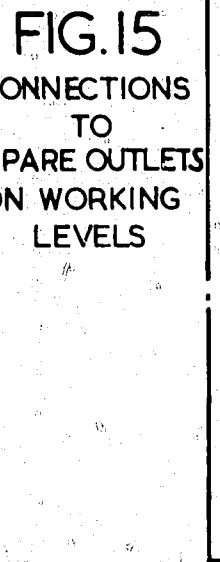


FIG. 16B
I PER. WORKING LEV. PER. GRADING

EXPLANATORY ONLY

WIRE GAUGE SHOWN METRIC FIG. 13B ETH STRAP WAS ON TERM. 16, FIGS. 16A, 16B, 17A, 17B AMENDED MINOR MODS. FIGS. 13B & 17B (99533)	6-25-5-73	B.5-H.
NZ NOTE A ADDED TO SHT 2 (99944)	6A 27-8-73	B.5-H.
AMENDMENT PARTICULARS	ISSUE DATE	APP?
NZPO	DRAWN KX	CHECK'D ER
	WIRING S	CIRCUIT

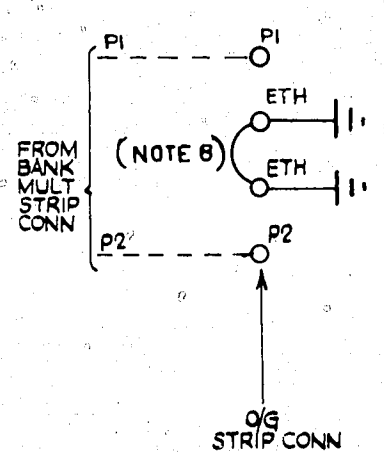
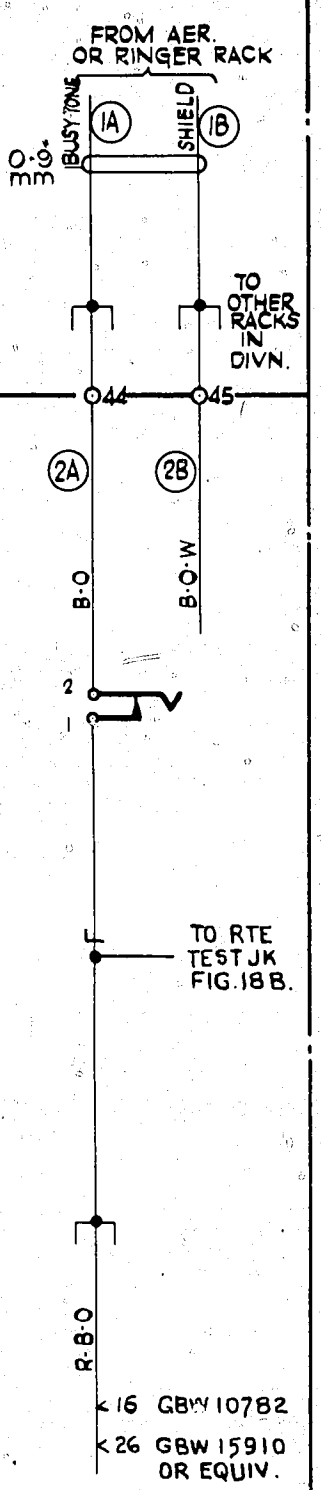
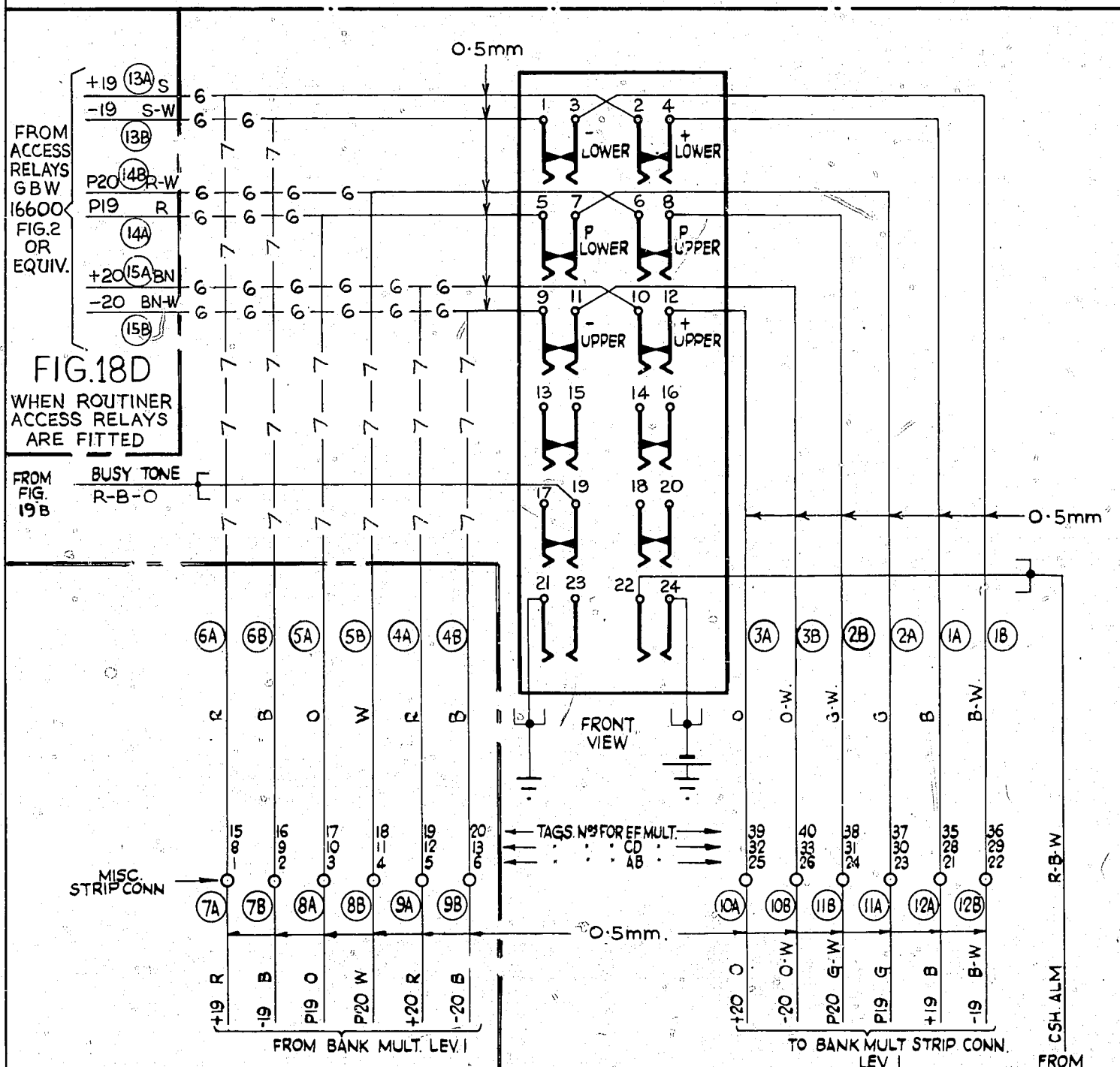
COMMON SERVICES RACK WIRING
200 LINE FINAL SELECTORS WITH TOLL FACILITIES 11-20 PBX.
SIZE M 50v W
GBW 16160
SHT 3-4

FIG.18A
ROUTINE TEST LINE JACK
(NOTE 12)

FIG.19 A
BUSY TONE ETH.
DISTRIBUTION

FIG.20
T.O.S.
BUSYING

ALLOCATION OF TAGS ON RACK MISC STRIP CONN.			
TAG N°	SERVICE	TAG N°	SERVICE
1	S	11	LAMP
2	Z	12	FB
3	ST	13	FA
4	LAMP	14	TONE
5	ALM	15	SHIELD
6	S	16	POS.BATT.
7	Z	17	
8	ST	18	TONE
9	LAMP	19	SHIELD
10	ALM	20	T.T.BELL
21	INT RING (1)	31	RING RET (1)
22	RING (ODD)	32	RING RET (ODD)
23	INT. RING (2)	33	RING RET (2)
24	RING (EVEN)	34	RING RET (EVEN)
25	INT. RING (3)	35	RING RET (3)
26		36	1
27	S ODD	37	2
28	S EVEN	38	3
29	I UNIT ODD	39	4
30	I UNIT EVEN	40	
41		51	
42		52	
43		53	FA
44	TONE	54	LAMP
45	SHIELD	55	FB
46		56	
47		57	
48		58	
49		59	
50		60	



ETH. R. ETH. BAR - ETH TAGS
1-20 & COMMON
OVER OTHER
O/G STRIPS CONN
ON RACK

<16 GBW10782
<26 GBW15910
OR EQUIV.

FIG.18C
1 PER MULT.
WHEN ROUTINER ACCESS
RELAYS ARE NOT FITTED

FIG.18 B
1 PER. MULT.
FOR BATT. & ETH. RUNS SEE FIG.2

FIG.19 B
1 PER.
RACK.

WIRE GAUGE SHOWN METRIC.	(99533)	6	25-5-73	B.S.H.
FIGS.18C & 18D ADDED				
FIG.19B BUSY TONE WAS FROM FIG.6B.		5.		
FIG.19B. U26 & CONN. TO FIG.18B ADDED				
NZ NOTE A ADDED - TO SHT 2	(99944)	6A	27-8-73	BS-H
AMENDMENT PARTICULARS	ISSUE DATE	APP		

**COMMON SERVICES
RACK WIRING
200 LINE FINAL SELECTORS
WITH TOLL FACILITIES 11-20 PBX.**

NZPO	DRAWN	CHECK'D	WIRING	CIRCUIT	GBW 16160	SHT. 4-4
-------------	--------------	----------------	---------------	----------------	------------------	-----------------