

FIG 1A CONTROL CIRCUIT (ORD SUBS GROUP)

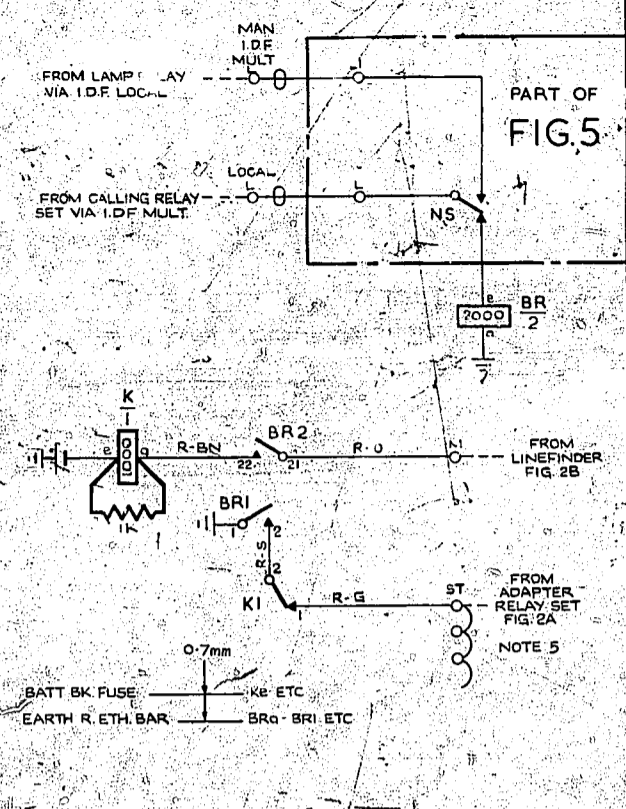


FIG 1B CONTROL CIRCUIT (CCB SUBS GROUP)

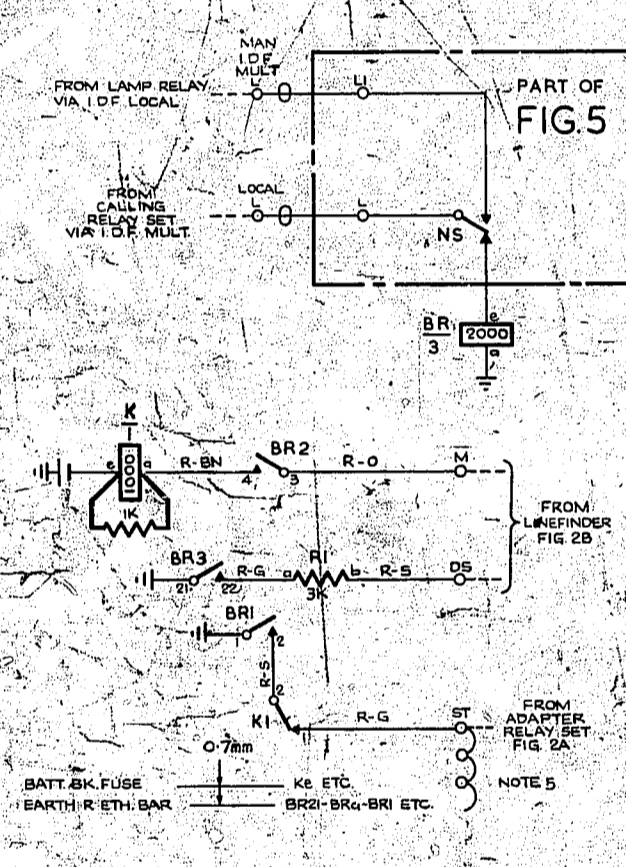


FIG 2B JUNCTION LINEFINDER

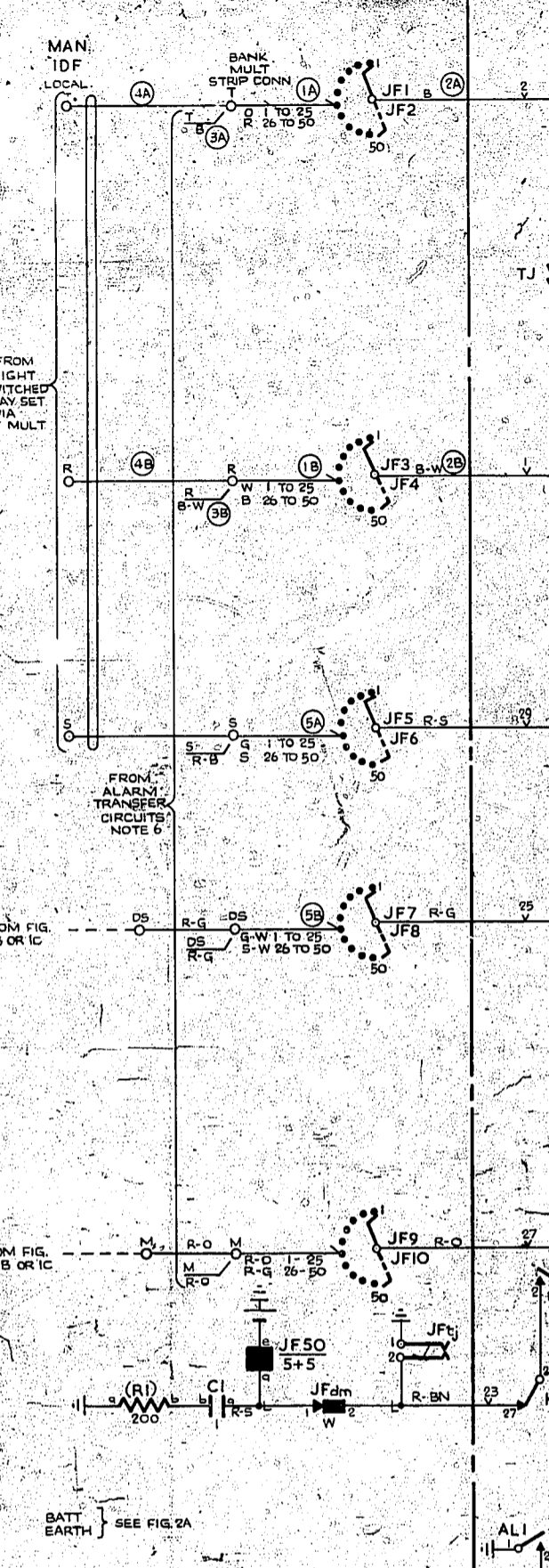


FIG 2A ADAPTER CIRCUIT

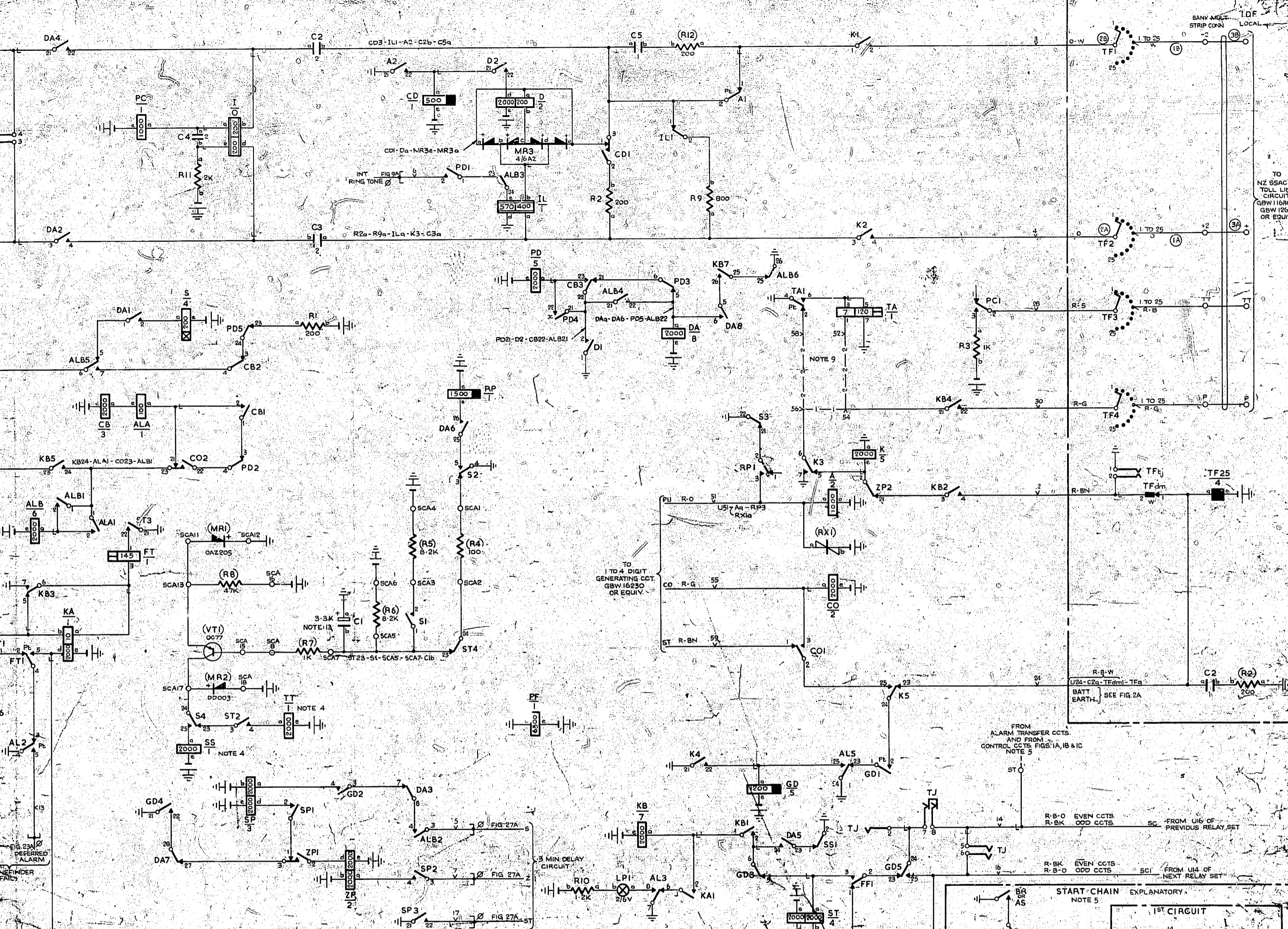
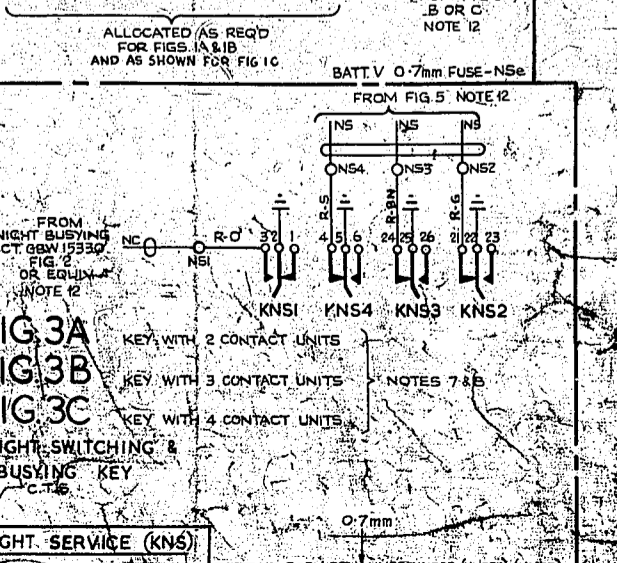
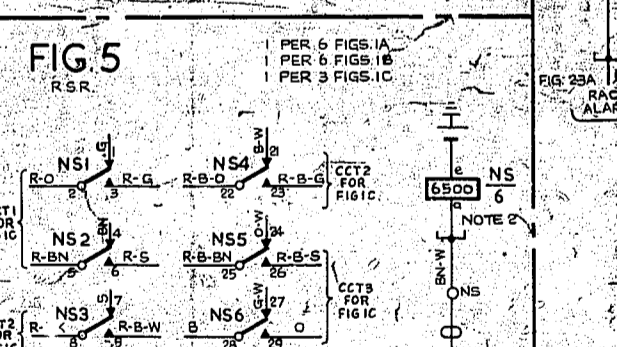
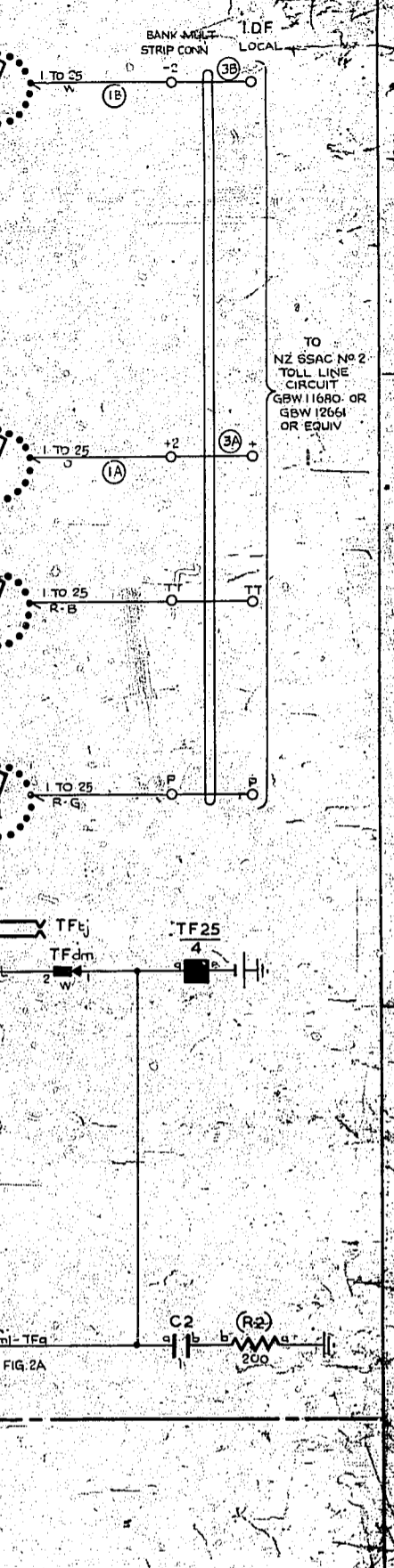


FIG 2C NZ SSAC N°2 TRUNK LINEFINDER



- NOTES: 1. FUSING: FIG 1A 1.5A PER 10 CCTS... 2. NS RELAYS ARE NORMALLY OPERATED... 3. SMALL JACK POINTS... 4. OPERATE TIME IS 5 SECS APPROX... 5. ST LEADS OF CONTROL CCTS... 6. CONNECTIONS FROM THE ALARM TRANSFER CIRCUITS... 7. CONTACT KNS1 SERVES 10 NS RELAYS... 8. KEY KNS TO BE MECHANICALLY COUPLED... 9. CONNECT STRAPS SHOWN... 10. ALL WIRING TO BE 25 SWG... 11. WHEN MANUAL SWITCHBOARD IS IN A BUILDING... 12. IN SOME EARLY EQUIPMENT, CI IS ASKUP

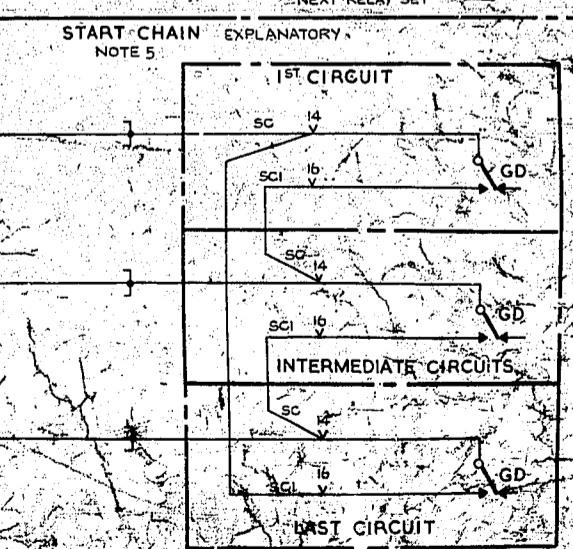
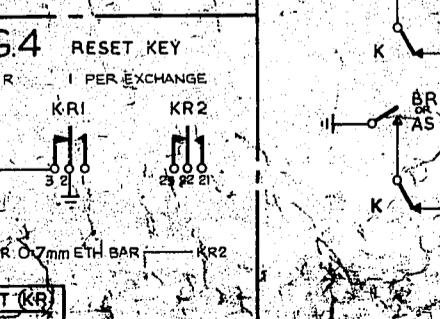


Table with columns for component names and values, including items like NS1, NS2, NS3, NS4, NS5, NS6, NS7, NS8, NS9, NS10, NS11, NS12, NS13, NS14, NS15, NS16, NS17, NS18, NS19, NS20, NS21, NS22, NS23, NS24, NS25, NS26, NS27, NS28, NS29, NS30, NS31, NS32, NS33, NS34, NS35, NS36, NS37, NS38, NS39, NS40, NS41, NS42, NS43, NS44, NS45, NS46, NS47, NS48, NS49, NS50, NS51, NS52, NS53, NS54, NS55, NS56, NS57, NS58, NS59, NS60, NS61, NS62, NS63, NS64, NS65, NS66, NS67, NS68, NS69, NS70, NS71, NS72, NS73, NS74, NS75, NS76, NS77, NS78, NS79, NS80, NS81, NS82, NS83, NS84, NS85, NS86, NS87, NS88, NS89, NS90, NS91, NS92, NS93, NS94, NS95, NS96, NS97, NS98, NS99, NS100.

GBW 15100