

FIG. 1A CONTROL CIRCUIT (ORD SUBS GROUP)

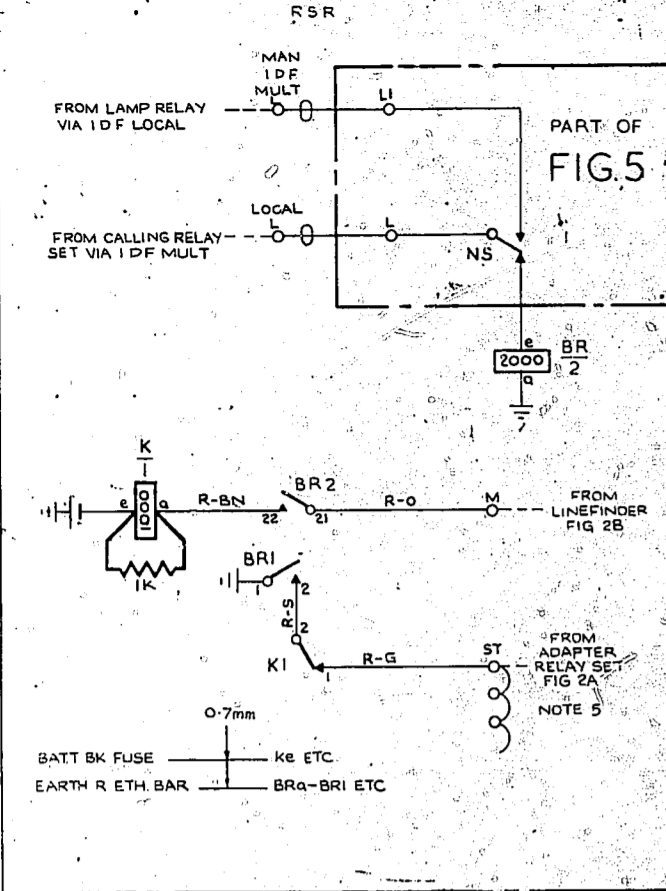


FIG. 1B CONTROL CIRCUIT (CCB SUBS GROUP)

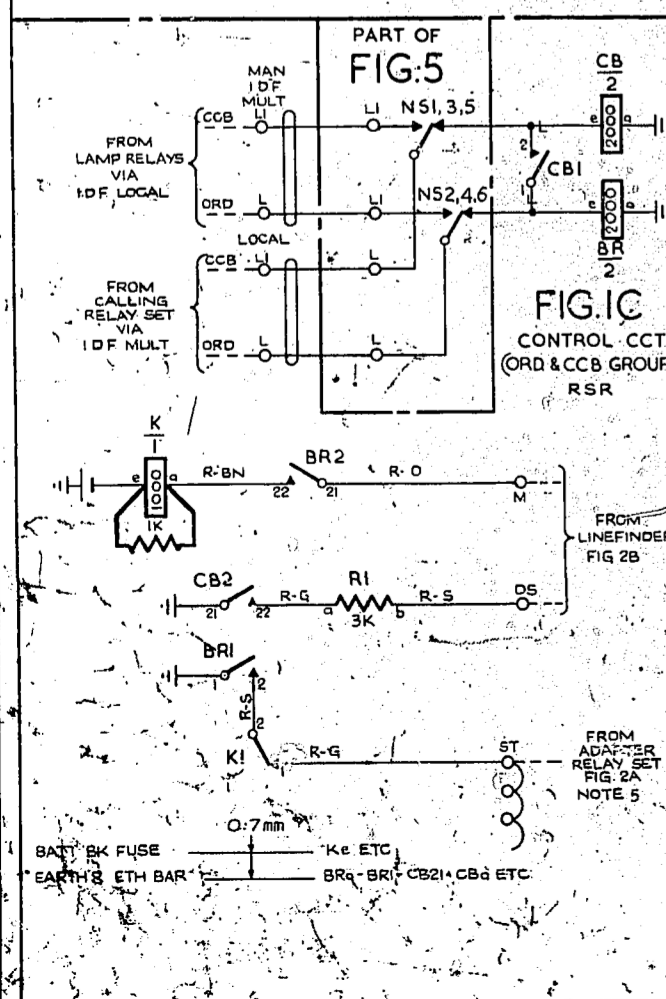
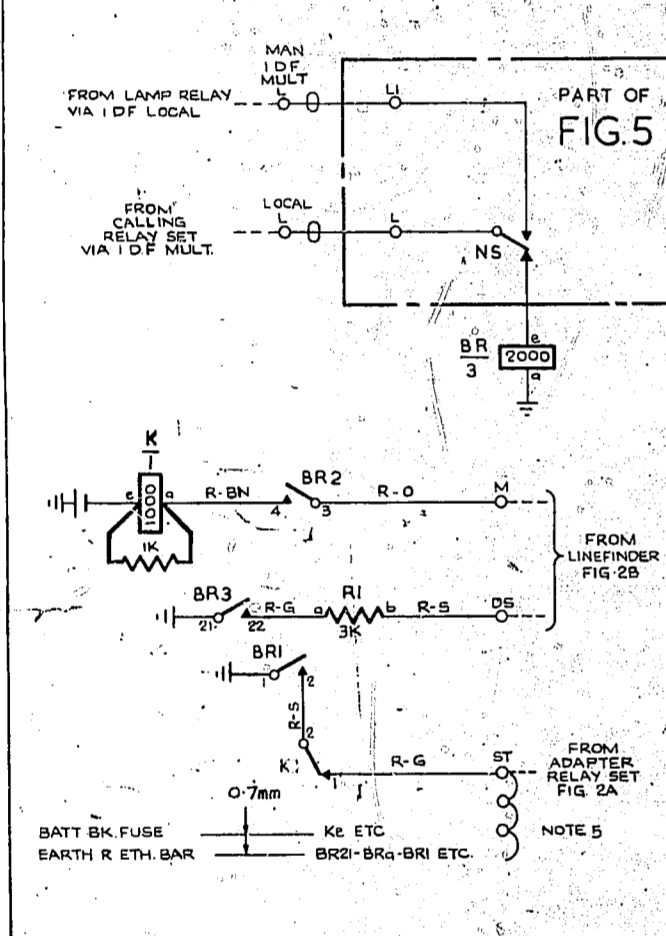


FIG. 2B JUNCTION LINEFINDER

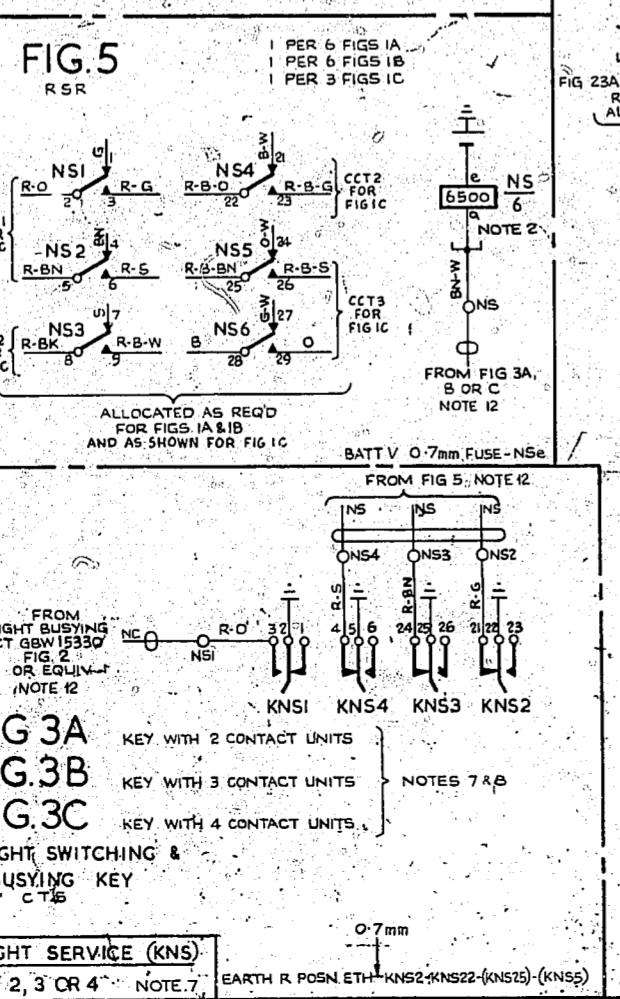
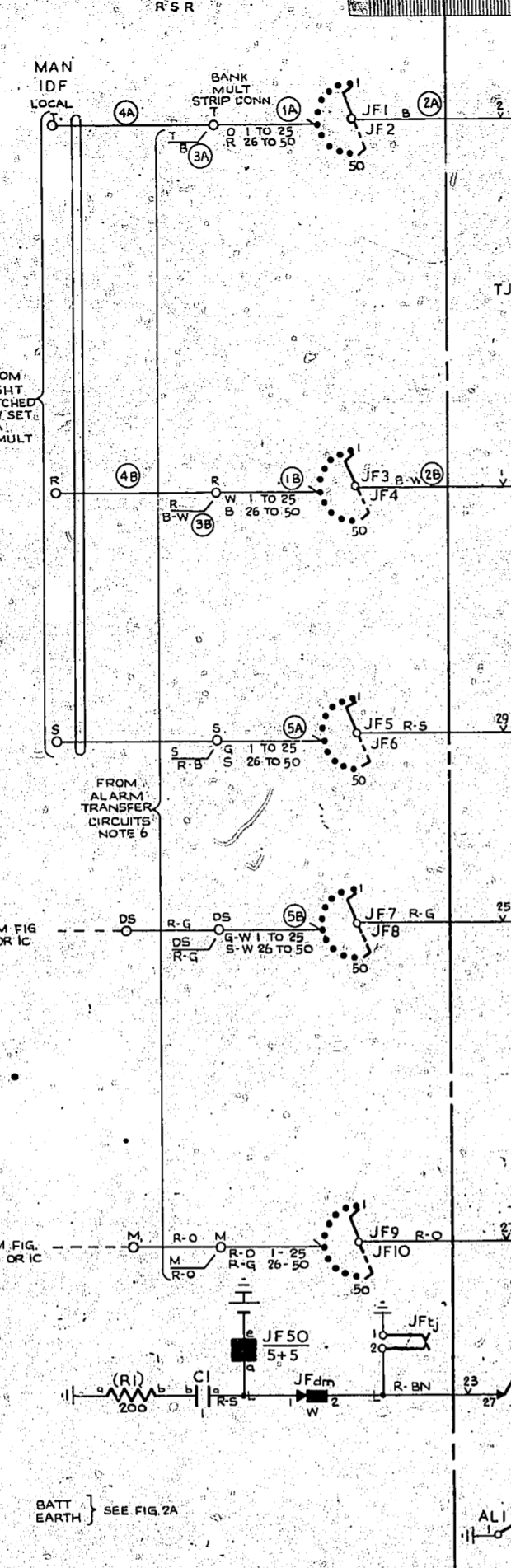


FIG. 2A ADAPTER CIRCUIT

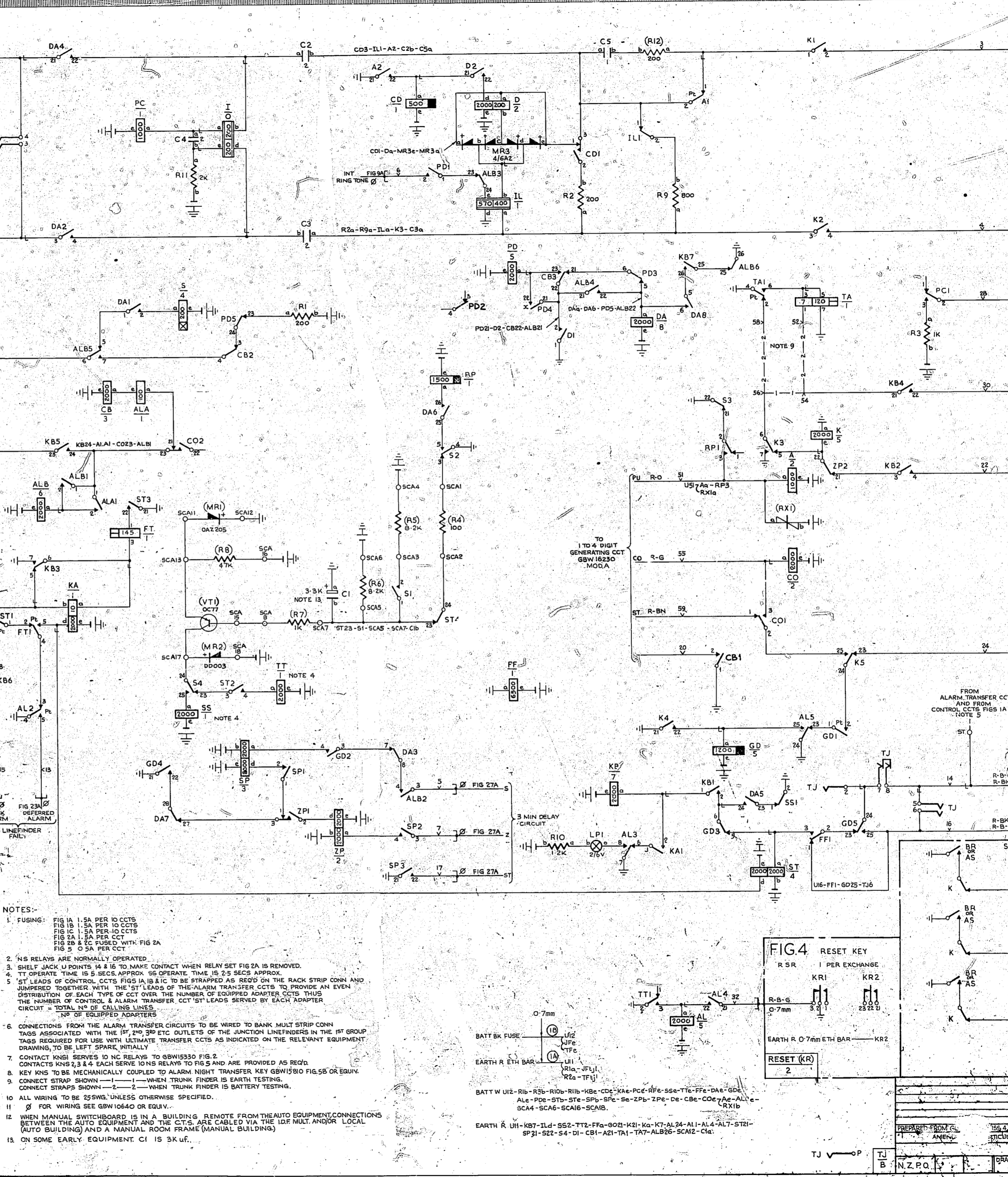
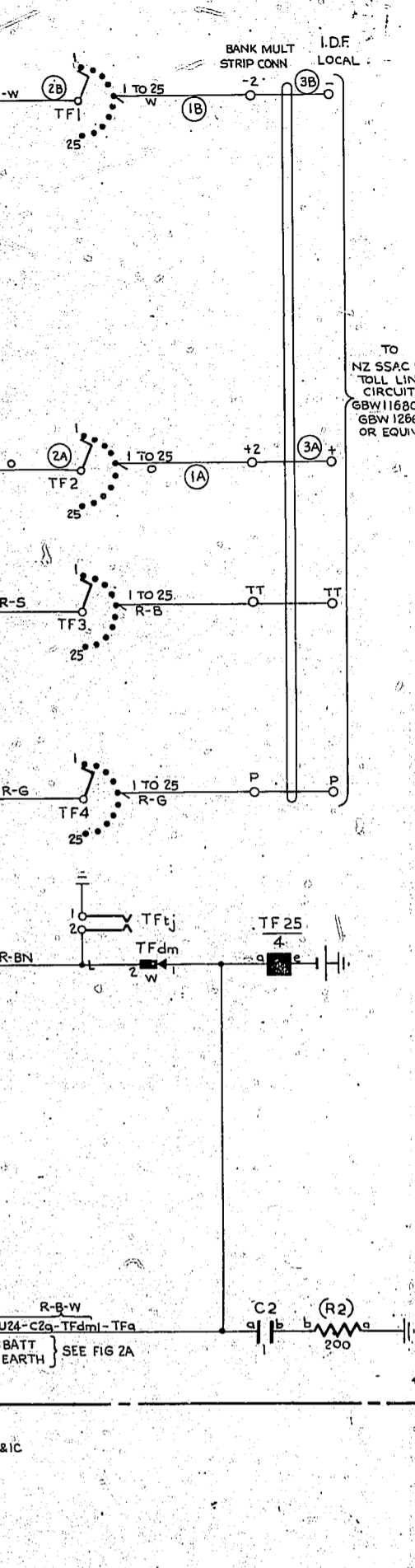
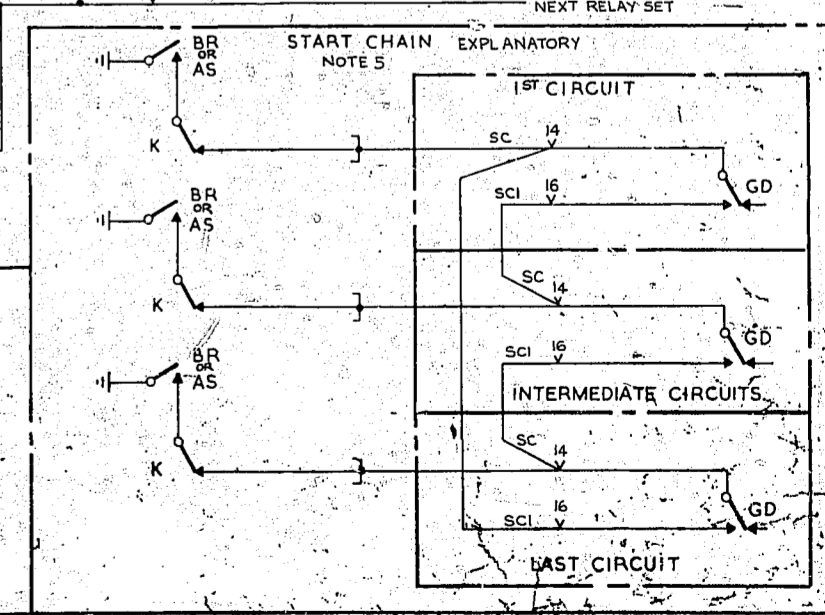
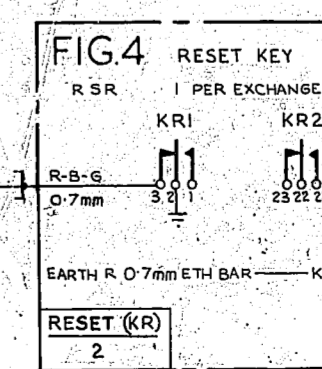


FIG. 2C NZ SSAC NO 2 TRUNK LINEFINDER



- NOTES:
1. FUSING: FIG 1A 1.5A PER 10 CCTS
FIG 1B 1.5A PER 10 CCTS
FIG 1C 1.5A PER 10 CCTS
FIG 2A 1.5A PER CCT
FIG 2B & 2C FUSED WITH FIG 2A
FIG 3 0.5A PER CCT
 2. NS RELAYS ARE NORMALLY OPERATED.
 3. SHELF JACK U POINTS 14 & 16 TO MAKE CONTACT WHEN RELAY SET FIG 2A IS REMOVED.
 4. TT OPERATE TIME IS 5 SECS. APPROX. SS OPERATE TIME IS 2.5 SECS. APPROX.
 5. ST LEADS OF CONTROL CCTS FIGS 1A, 1B & 1C TO BE STRAPPED AS REQ'D ON THE RACK STRIP CONN AND JUMPED TOGETHER WITH THE ST LEADS OF THE ALARM TRANSFER CCTS TO PROVIDE AN EVEN DISTRIBUTION OF EACH TYPE OF CCT OVER THE NUMBER OF EQUIPPED ADAPTER CCTS. THE NUMBER OF CONTROL & ALARM TRANSFER CCT ST LEADS SERVED BY EACH ADAPTER CIRCUIT = TOTAL NO OF CALLING LINES / NO OF EQUIPPED ADAPTERS
 6. CONNECTIONS FROM THE ALARM TRANSFER CIRCUITS TO BE WIRED TO BANK MULT STRIP CONN TAGS ASSOCIATED WITH THE 1ST, 2ND, 3RD ETC OUTLETS OF THE JUNCTION LINEFINDER IN THE 1ST GROUP TAGS REQUIRED FOR USE WITH ULTIMATE TRANSFER CCTS AS INDICATED ON THE RELEVANT EQUIPMENT DRAWING, TO BE LEFT SPARE INITIALLY.
 7. CONTACT KNS1 SERVES 10 NS RELAYS TO GBW15330 FIG 2.
 8. CONTACTS KNS2, 3 & 4 EACH SERVE 10 NS RELAYS TO FIG 5 AND ARE PROVIDED AS REQ'D.
 9. CONNECT STRAP SHOWN — 1 — WHEN TRUNK FINDER IS EARTH TESTING. CONNECT STRAPS SHOWN — 2 — WHEN TRUNK FINDER IS BATTERY TESTING.
 10. ALL WIRING TO BE 25SWG, UNLESS OTHERWISE SPECIFIED.
 11. Ø FOR WIRING SEE GBW10640 OR EQUIV.
 12. WHEN MANUAL SWITCHBOARD IS IN A BUILDING REMOTE FROM THE AUTO EQUIPMENT CONNECTIONS BETWEEN THE AUTO EQUIPMENT AND THE CCTS ARE CABLED VIA THE IDF MULT AND/OR LOCAL (AUTO BUILDING) AND A MANUAL ROOM FRAME (MANUAL BUILDING).
 13. ON SOME EARLY EQUIPMENT, CI IS 3K U.F.



NIGHT SWITCHING ADAPTER AND CONTROL CIRCUITS

TO NZ SSAC NO 2 TRUNK

PREPARED FROM	15.4 (G243.6)	A 26/10/60 GCG
STICULARS	1	1
DATE	APPROX	REVISION
NO	SCHEM	NO
SCALE	1	50

GBW 16100 MOD