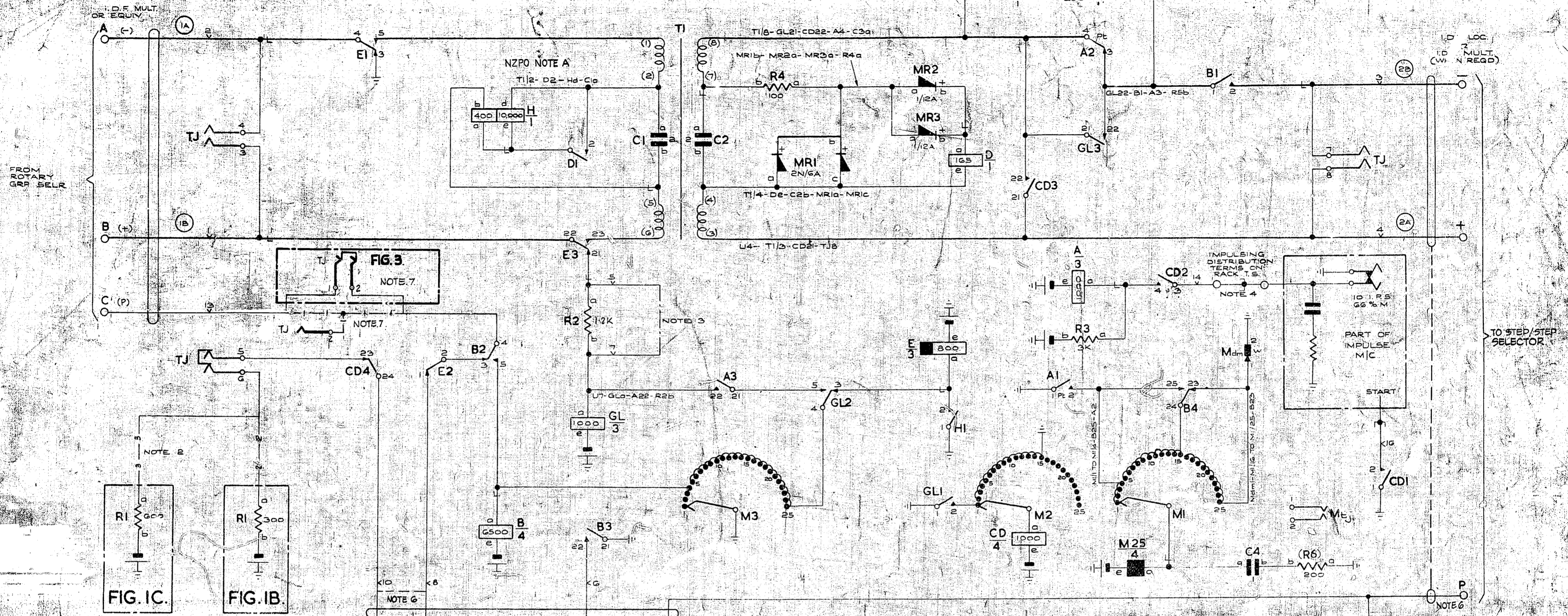


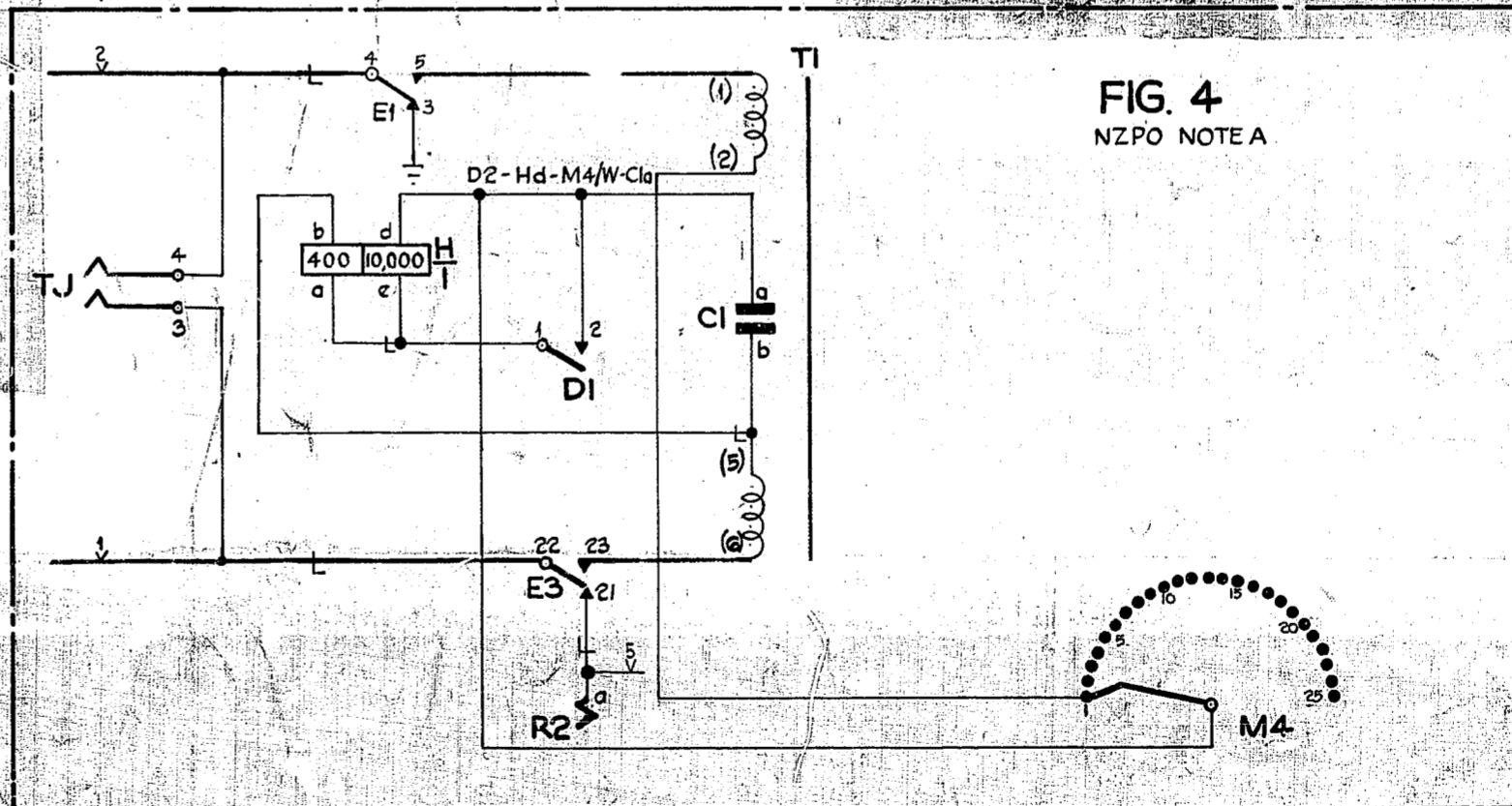
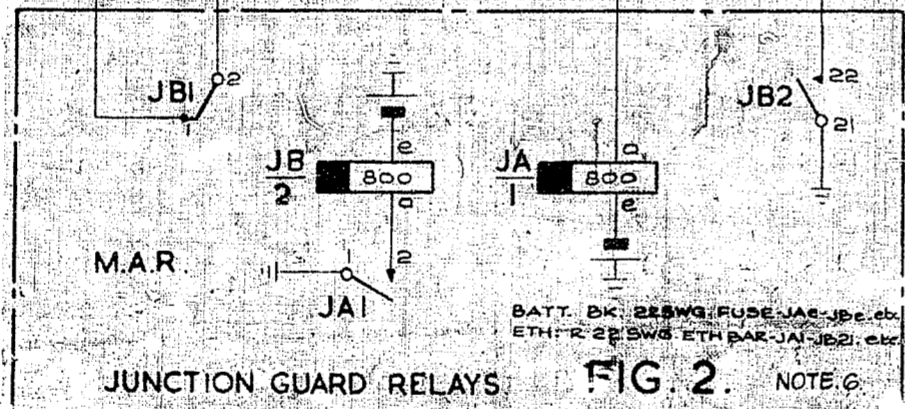
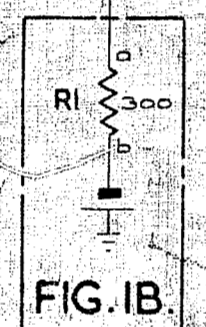
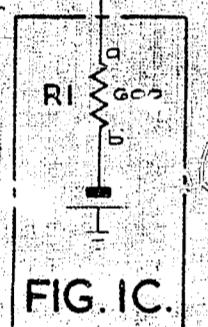
FIG. 1A.



FROM ROTARY GRP SELR

ID LOC 2 MULT (W N REQD)

TO STEP/STEP SELECTOR



NZPO NOTE A
 WHEN A RSM IS UNDER 7A2 REGISTER CONTROL AND HAS ACCESS TO AN AUTO-AUTO RELAY SET WITHIN THE SAME EXCHANGE OR AT A DISTANT EXCHANGE VIA A CIRCUIT OF LESS THAN 500 OHM LOOP RESISTANCE, THEN WIRE AS SHOWN IN FIG. 4

- NOTES:
1. FUSE 1.5A PER CCT (FIG. 1)
 FUSE 1.5A PER 10 CCTS (FIG. 2)
 2. USE FIG. 1B EXCEPT WHEN ROTARY GROUP SELECTOR TESTS TO 600 OHM IN WHICH CASE USE FIG. 1C.
 3. WHEN ROTARY EXCHANGE IS EQUIPPED WITH OTHER THAT 7A2 TYPE REGISTERS STRAP OUT THIS RESISTANCE
 4. ONE INTERRUPTER SPRING-SET OR CAM COMMON TO NOT MORE THAN 10 'A' RELAYS
 5. ALL WIRING TO BE 25 SWG UNLESS OTHERWISE SPECIFIED
 6. WHEN FORWARD HOLDING IS REQUIRED, ADD FIG. 2, DELETE STRAP BETWEEN U8 & U10 & CABLE U15 TO STEP/STEP SELECTOR
 7. WHEN BUSYING FACILITY IS REQUIRED DELETE WIRING 1-1-1-1-2 ADD FIG. 3
 8. WHEN FIG. 3 IS NOT USED TJ1 IS SPARE

BATT. W. U12-GL2-Ee-CDe-Me-Be-Ae-R1b-R3b
 ETH. R. U11-HI-GL1-E3-CD1-M2/15 TO M2/2-M3/W-Mdm2-A1-B21-R6a
 BATT. BK. 22 SWG FUSE (3B) U12
 ETH. R. 22 SWG ETH BAR (3A) U11

NOTE 8
 (TJ 8)

AMENDMENT	PARTICULARS	ISSUE	DATE	APP.	SIZE	M	50V	W
	NZPO NOTE A & FIG. 4 ADDED	(13785)	5A	22-10-70	RW			
	NOTE 8 ADDED TJ 2 REARRANGED	(7784)	5	6-5-69	DBH			
	FIG. 3 ADDED NOTES 6 & 7 ADDED	(70802)	4	14-12-68	DBH			
	TITLE AMENDED	(48681)	3	11-1-62	KA			
	R2 WAS 200 OHM	(42445)	2	12-10-61	KA			
	U/C TERMINATIONS MODIFIED	(2479)	1	107-59	BW			
INTERWORKING RELAY SET TYPE RSM WITH OR WITHOUT FORWARD HOLDING ROTARY TO STEP BY STEP								
GBW 15690								

NZPO | DRN. MH. | CHK. | WIRING | CIRCUIT D.H.O.