

FIG. 1A POSITION CIRCUIT

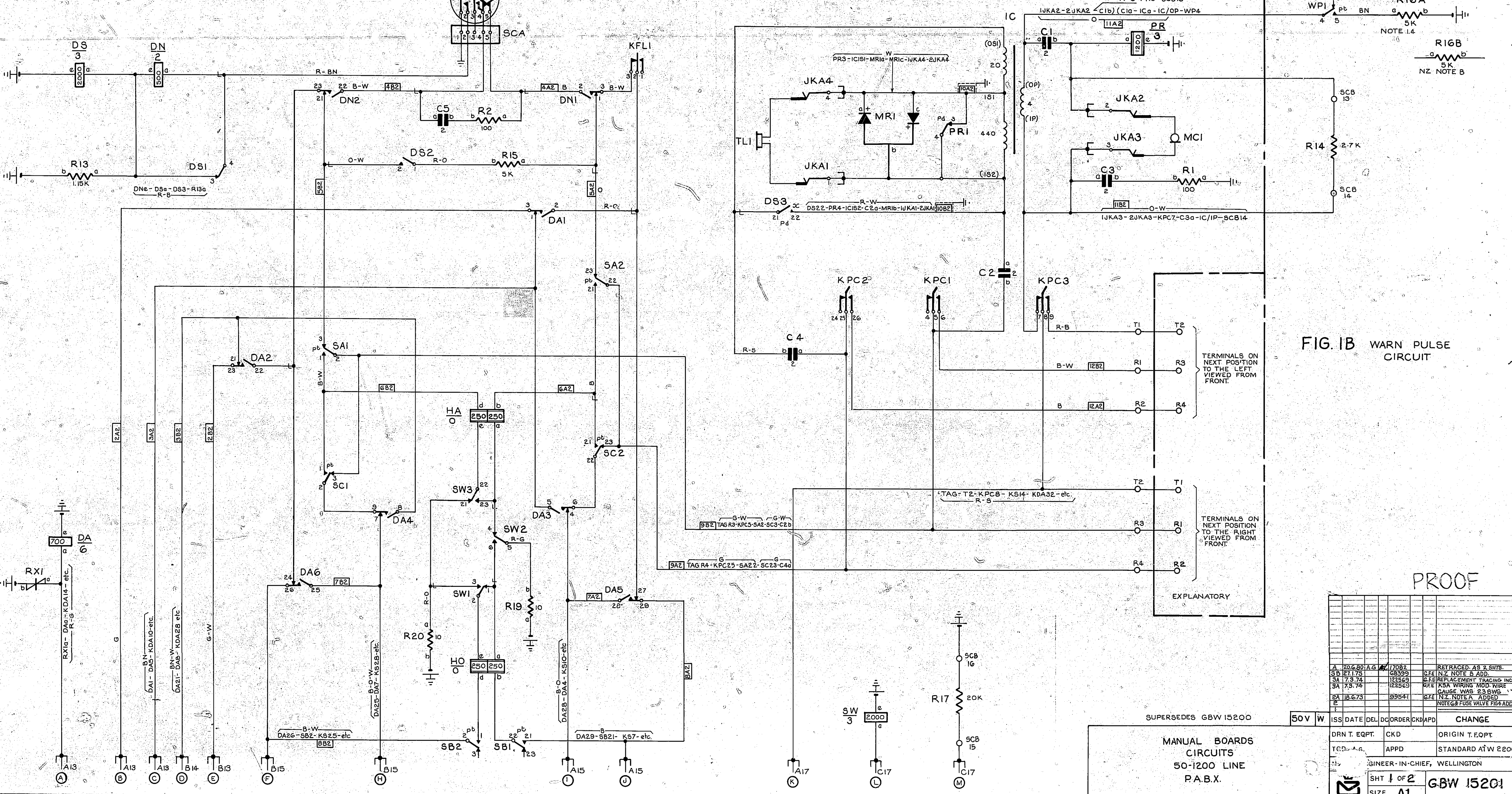


FIG. 1B WARN PULSE CIRCUIT

**PROOF**

A	20.6.80	A.G.	17082	RETRACTED AS 2 SHTS.
B	27.1.75		68399	SEE N.Z. NOTE B ADD.
3A	7.3.74		122569	SEE REPLACEMENT TRACING INCORP.
3A	7.3.74		122569	SEE KSA WIRING MOD WIRE CAUSE WAS 23 SHWS
2A	18.6.75		89541	SEE N.Z. NOTE A ADD.
				NOTE: FUSE VALVE R14 ADD.

50V	W	ISS DATE	DEL	DC ORDER	CHKD	APPD	CHANGE

MANUAL BOARDS CIRCUITS  
50-1200 LINE  
P.A.B.X.

SH 1 OF 2  
SIZE A1  
GBW 15201

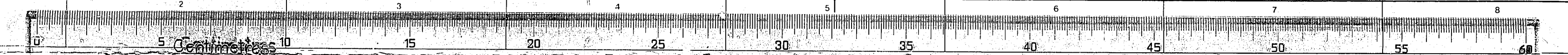


FIG.2 CORD CIRCUIT KEYS & LAMPS

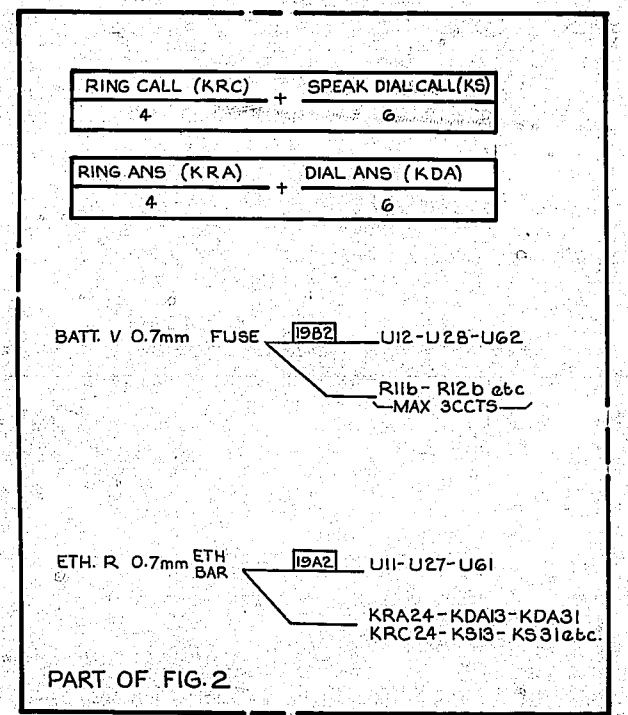
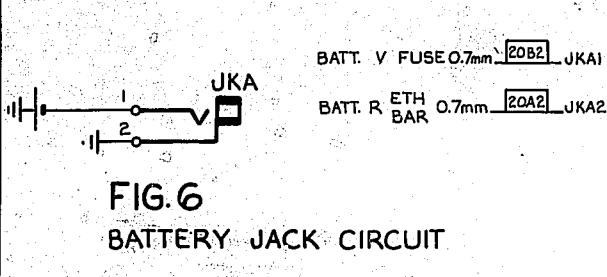
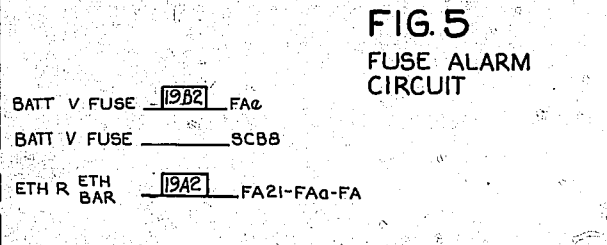
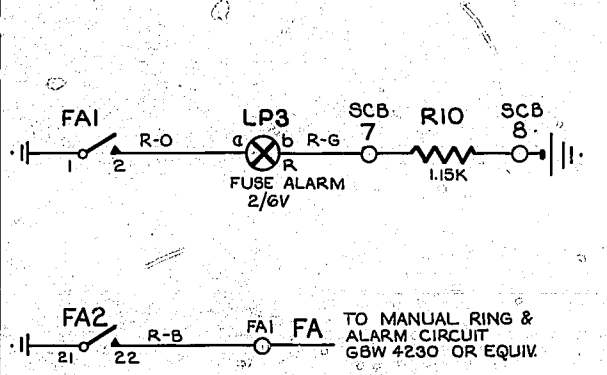
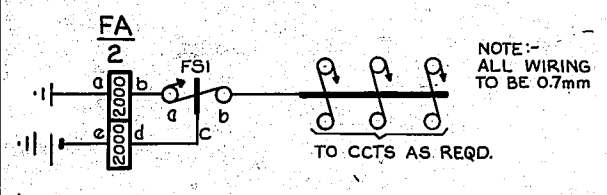
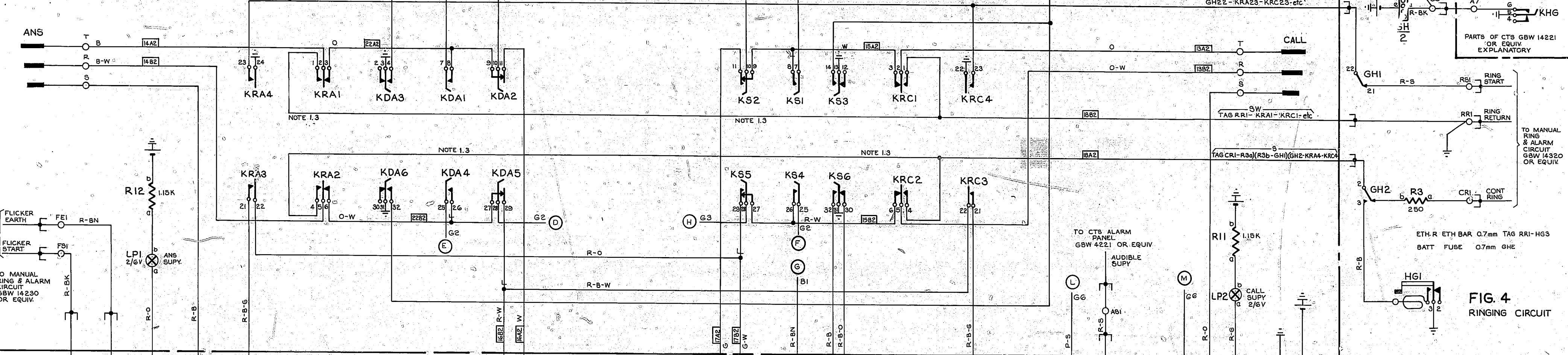


FIG.3 CORD CIRCUIT RELAY SET EXPLANATORY ONLY (SEE GBW 15211)

NOTES: SEE SHEET 1.

PROOF

SUPERSEDES GBW 15200 50V W  
MANUAL BOARD CIRCUITS  
50-1200 LINE  
P.A.B.X

ISS DATE	DEL DC ORDER	CKD	ORIGIN T-EQPT	CHANGE
A 20.6.30	A 6	1708 Z		
DRN T-EQPT	CKD	ORIGIN T-EQPT		
TCD A.6	APPD	STANDARD ATW 22001		
NZPO ENGINEER-IN-CHIEF, WELLINGTON.				
SHT 2 OF 2				GBW 15201
E A1				

