

FIG. 1A

M.A.R. AUXILIARY RELAY

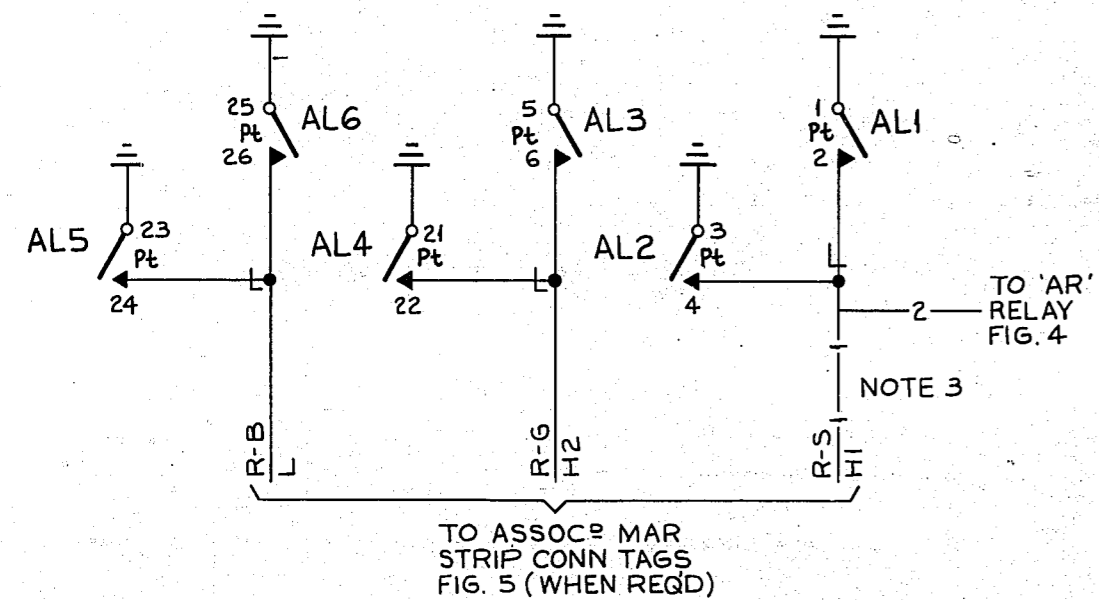
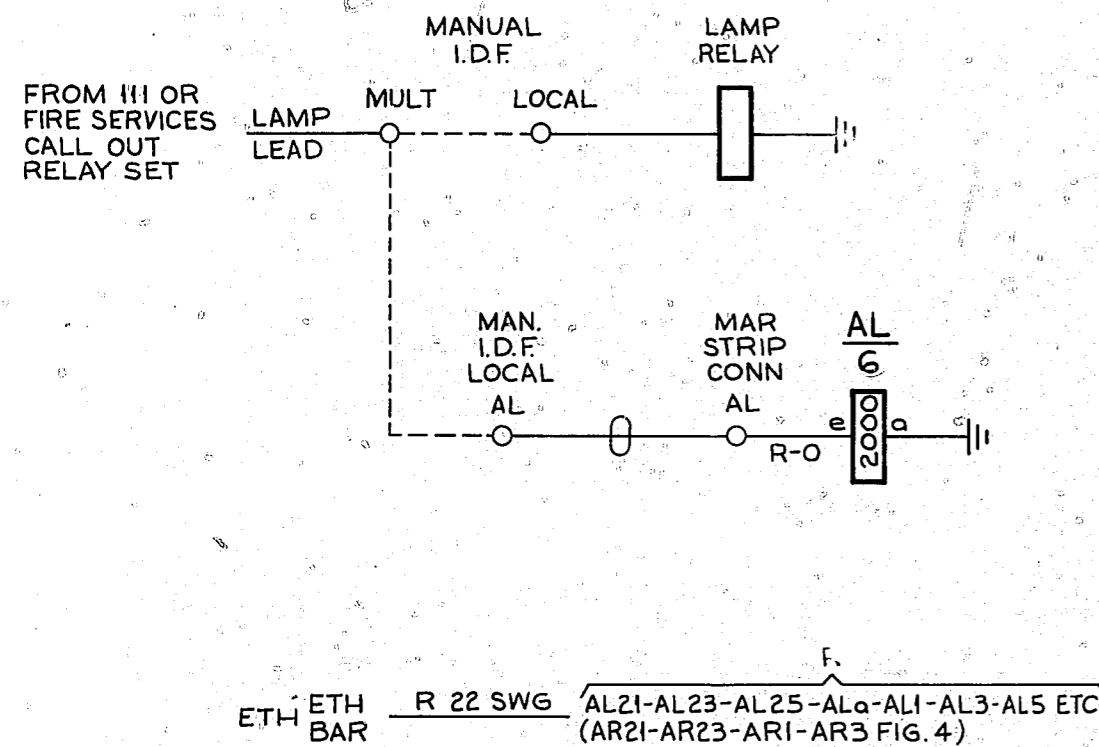


FIG. 1B

M.A.R. AUXILIARY RELAY

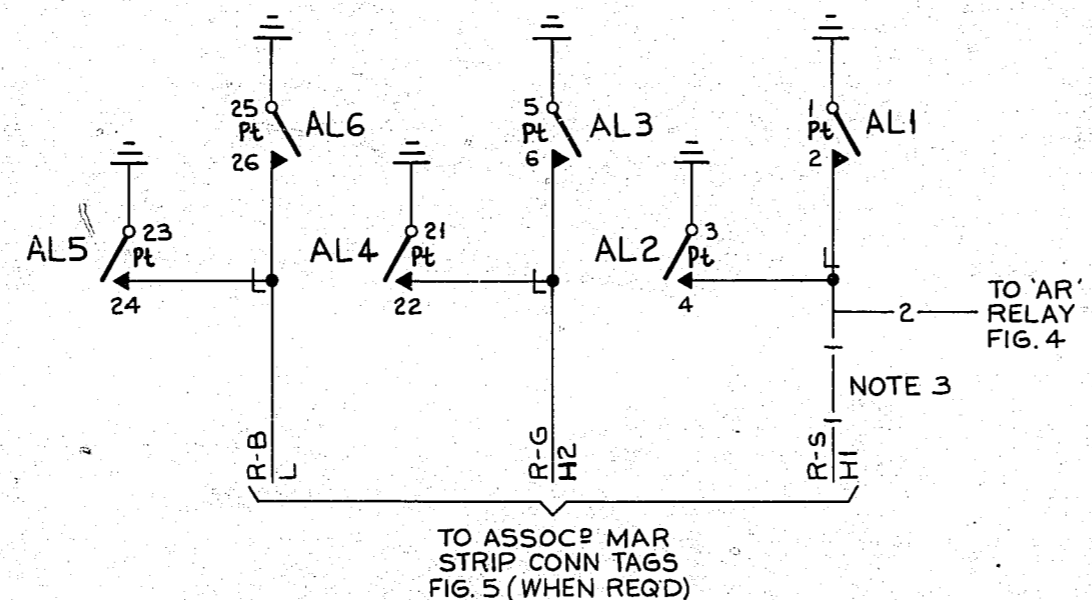
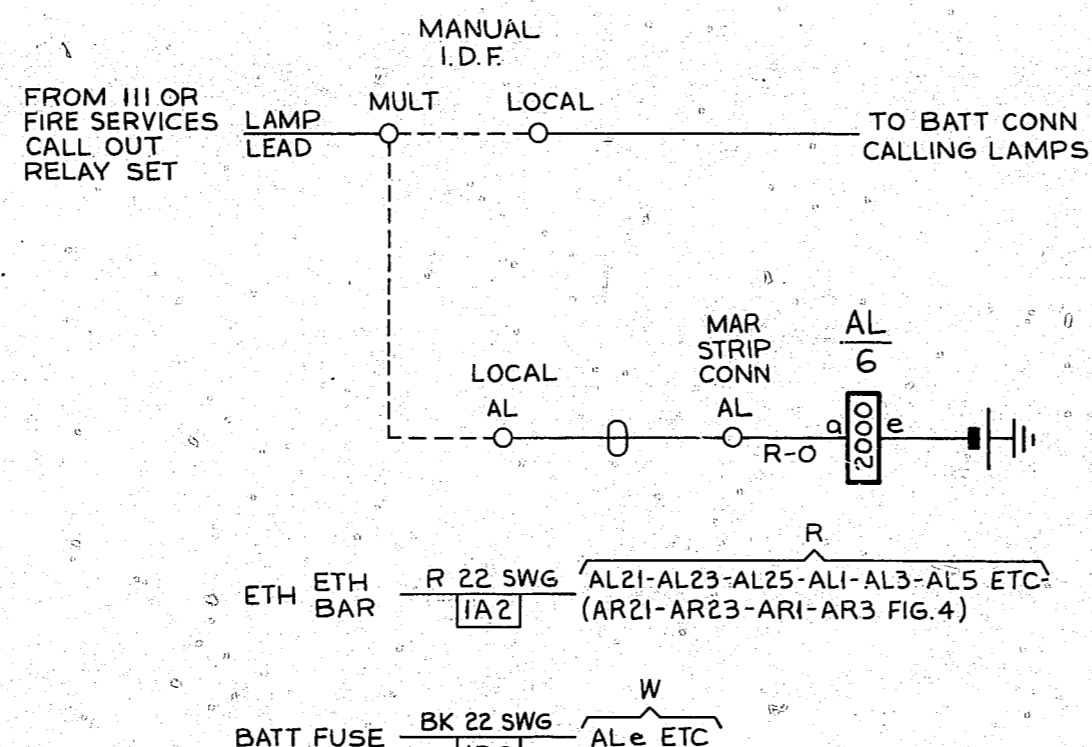


FIG. 3

MANUAL BOARD ALARM LAMP
1 PER EXCH

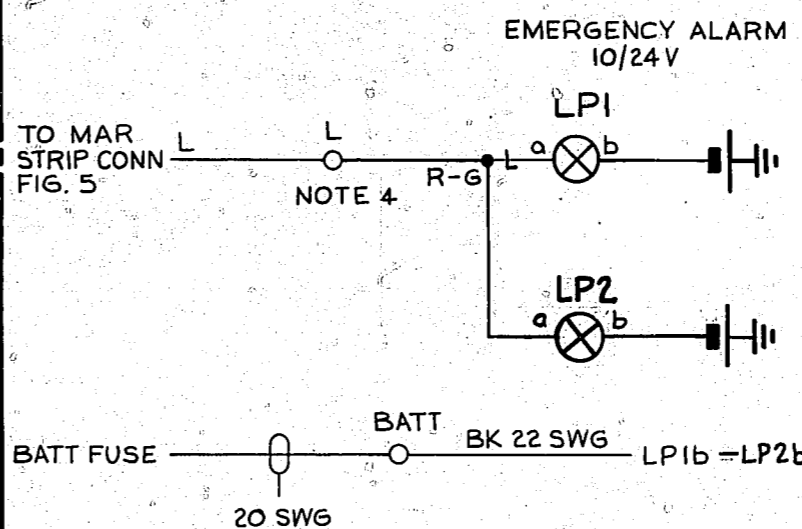
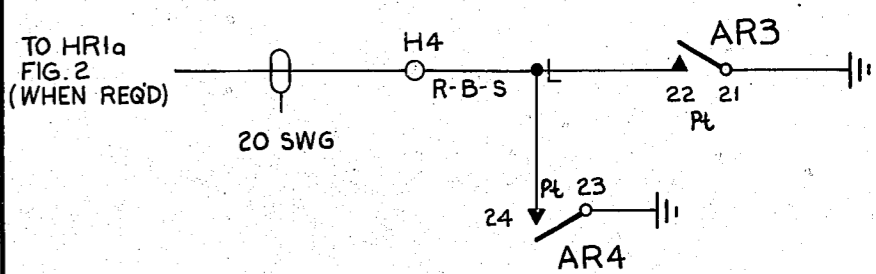
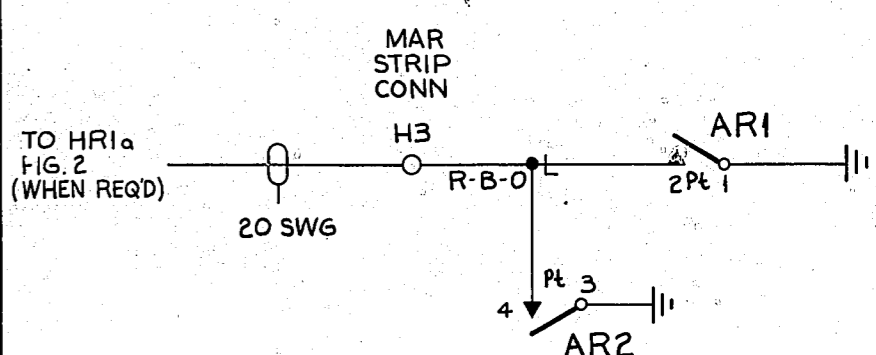
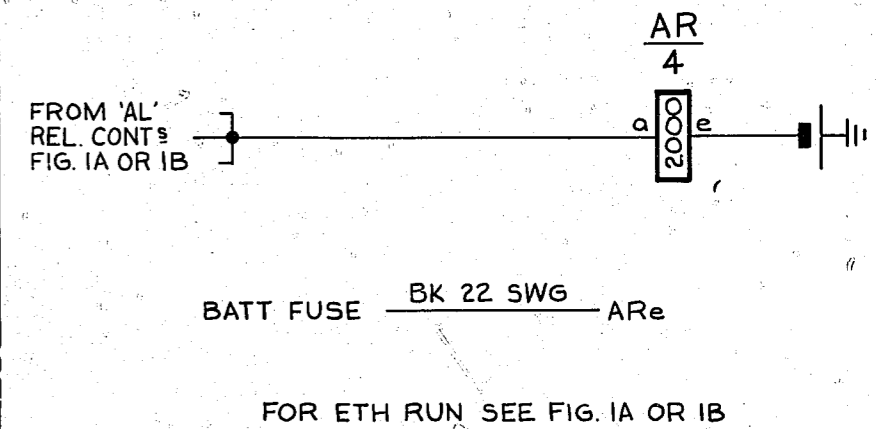


FIG. 4

M.A.R. EXTENSION HOOTERS
FITTED WHEN MORE THAN TWO HOOTERS ARE REQ'D



NOTE 4 **FIG. 5**
M.A.R. STRIP CONN

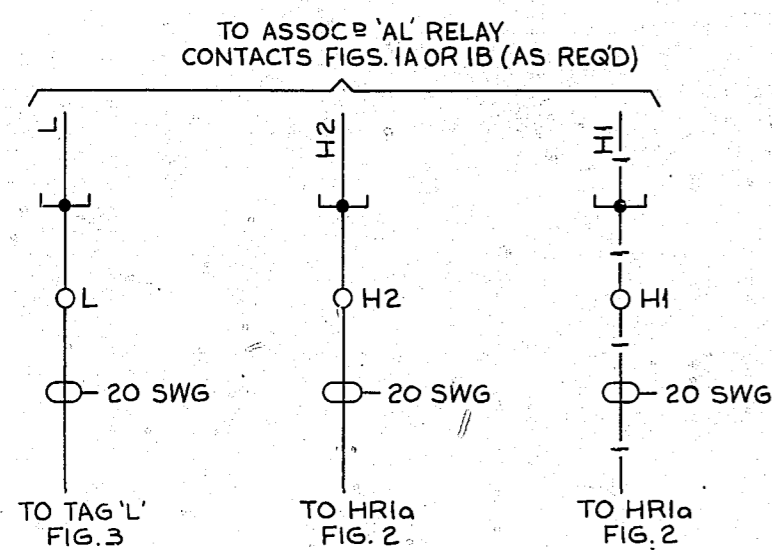
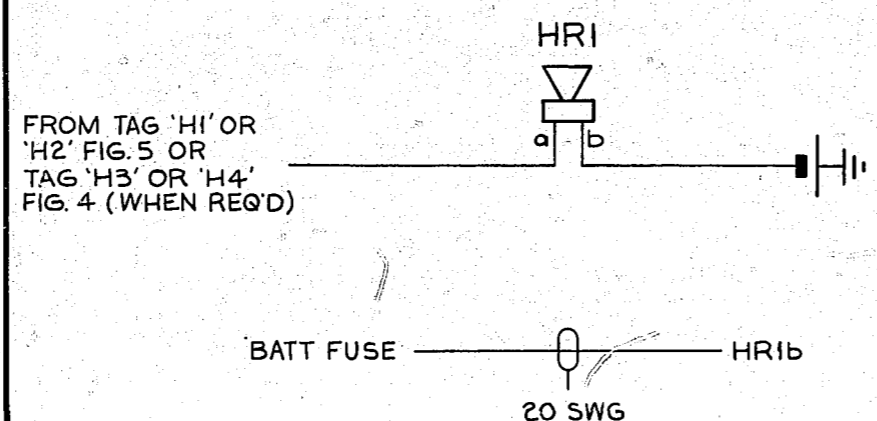


FIG. 2

HOOTER
MOUNTED IN ACCORDANCE WITH LOCAL REQUIREMENTS



NOTES:-

1. FUSE FIG. 1B :- 1.5A PER 5 CCTS.
FIG. 2 :- 1.5A PER HOOTER.
FIG. 3 :- 1.5A PER CCT.
FIG. 4 :- 1.5A PER CCT.
FIG. 6B :- 1.5A PER 5 CCTS.
2. ALL WIRING TO BE 25 SWG UNLESS OTHERWISE SPECIFIED.
3. WHEN FIG. 4 IS REQUIRED ADD WIRING SHOWN THUS — 2 — & OMIT WIRING & CABLING SHOWN THUS — 1 —.
4. IN SOME EXCHANGES THE MANUAL SWITCHBOARD IS SITUATED IN A BUILDING REMOTE FROM THE AUTO EQUIPMENT BUILDING & IN SUCH CASES THE CONNEXIONS BETWEEN THE M.A.R. STRIP CONN. & THE MANUAL BOARD STRIP CONN ARE CABLED VIA THE I.D.F. MULT &/OR LOCAL (AUTO BUILDING) & A MANUAL ROOM FRAME (MANUAL BUILDING).

				EMERGENCY SERVICES AUXILIARY RELAYS & ALARMS			
PREPARED FROM GBW 14970 ISS.7B. (68216)				A	17-5-76	CJW	
AMENDMENT PARTICULARS				ISS	DATE	APD	REF:-
				SIZE	A2	24V	H
NZPO				DRAWN	CHECKED	WIRING	CIRCUIT
				G.S.	E.J.D.	E.J.D.	
				GBW 14970 MOD B			

