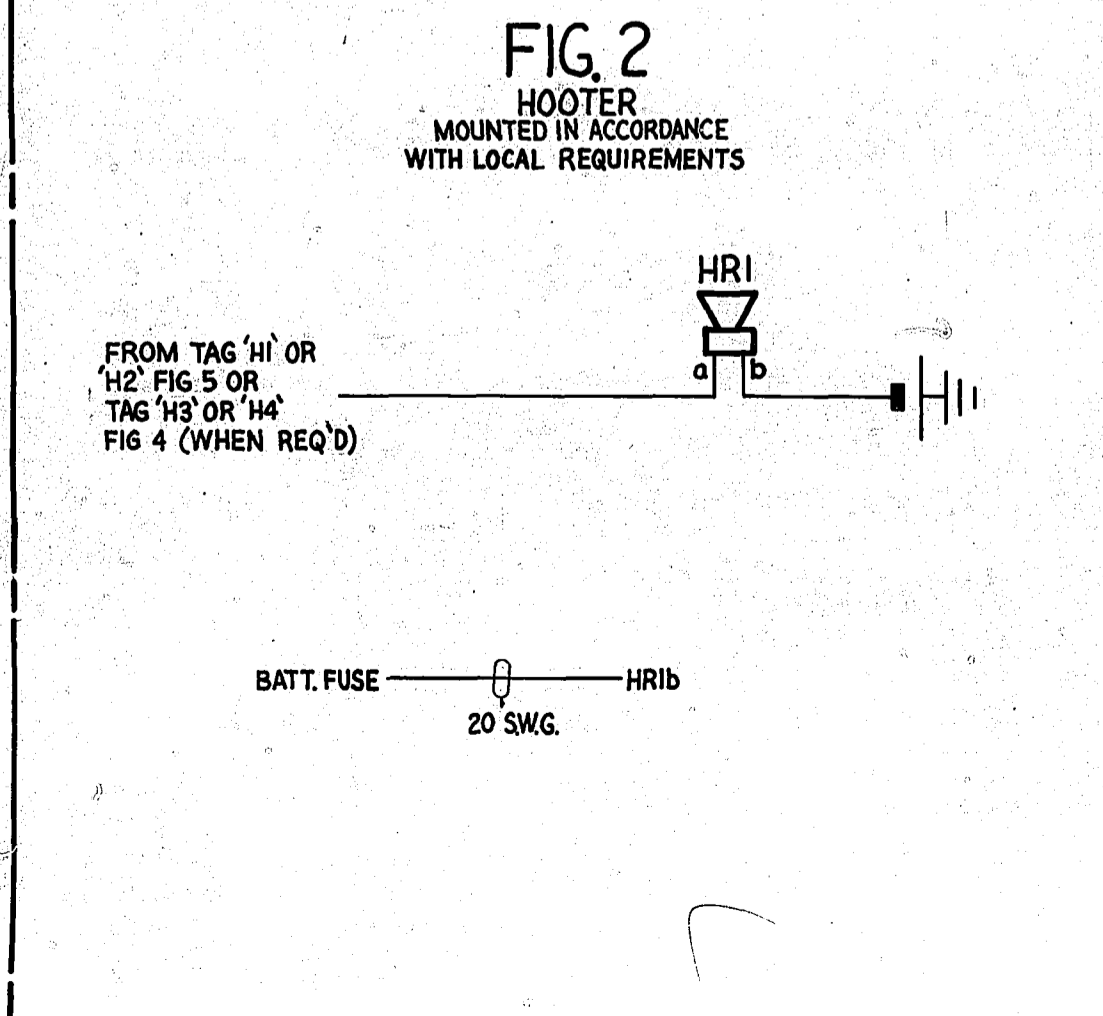
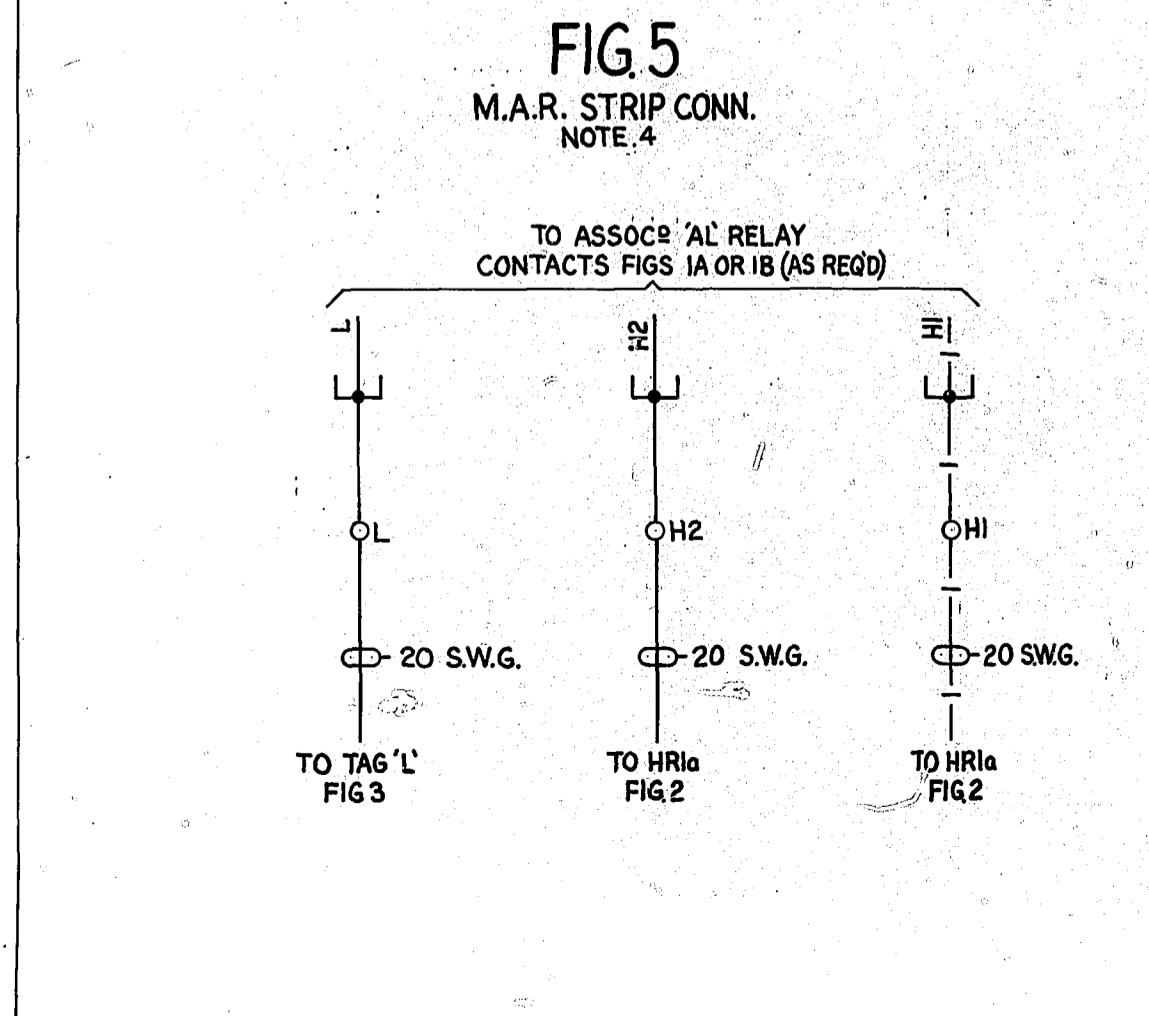


NOTES

- FUSE FIG. 1B:-1.5A PER 5 CCTS. FIG. 2 :-1.5A PER HOOTER FIG. 3 :-1.5A PER CCT. FIG. 4 :-1.5A PER CCT. FIG. 6B:-1.5A PER 5 CCTS.
- ALL WIRING TO BE 25 SWG UNLESS OTHERWISE SPECIFIED
- WHEN FIG. 4 IS REQ'D ADD WIRING SHOWN THUS — 2 — & OMIT WIRING & CABLING SHOWN THUS — 1 —
- IN SOME EXCHANGES THE MANUAL SWITCHBOARD IS SITUATED IN A BUILDING REMOTE FROM THE AUTO EQUIPMENT BUILDING AND IN SUCH CASES THE CONNECTIONS BETWEEN THE M.A.R. STRIP CONN. & THE MAN. BD STRIP CONN. ARE CABLED VIA THE IDF. MULT. &/OR LOCAL (AUTO BUILDING) & A MAN. ROOM FRAME (MAN. BUILDING)
- ON SOME EARLY EQUIPMENT ALARM LAMP LPI FIG. 3 WAS USED AND COMPRISED OF THREE 12/50V OR 8/50V LAMPS CONNECTED IN PARALLEL.



FU. AUCKLAND T.M.X.

| EMERGENCY SERVICES AUXILIARY RELAYS ALARMS | | | | SIZE A2 | v |
|--|-------------|----------------|------------|---------|---|
| LPI CHANGED FROM 8/50V (FIG. 3) NOTE 5 AMD. (122850) | B | 1.4.74 | B5H | | |
| PREPARED FROM: GBW 14970 ISS 7A (122061) | A | 18.10.78 | B5-H | | |
| AMENDMENT | PARTICULARS | ISSUE DATE | APPD | REF | |
| NZPO | | | | | |
| | DRAWN G.S. | CHECKED FJD AD | WIRING FJD | CIRCUIT | |
| GBW 14970 MOD A | | | | | |