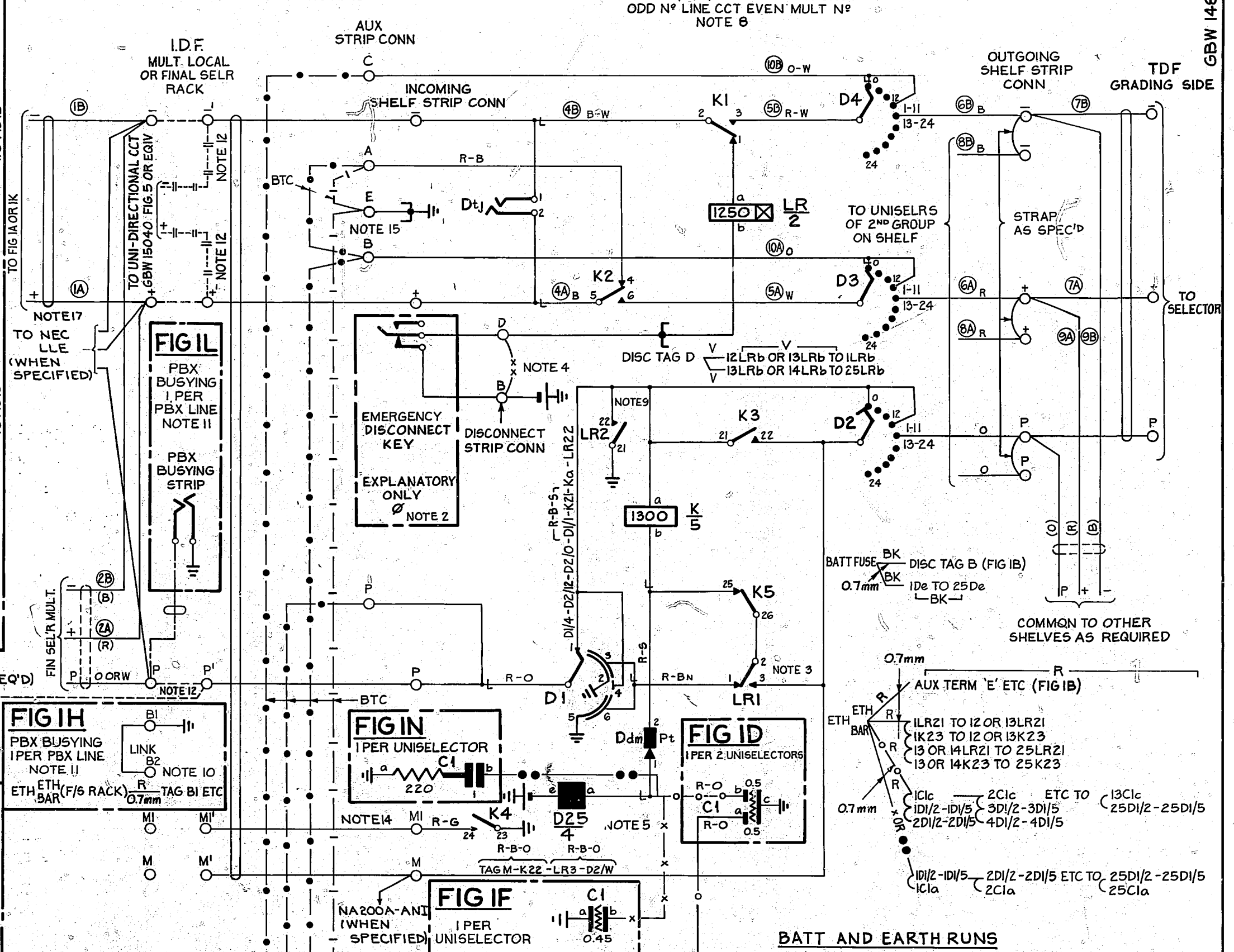


FIG I B SHARED SERVICE X SUBSCRIBER



CCTS 1,3,5 ETC OF LOWER GROUP
 CCTS 2,4,6, ETC OF UPPER GROUP
 ODD N° LINE CCT EVEN MULT N°
 NOTE 8

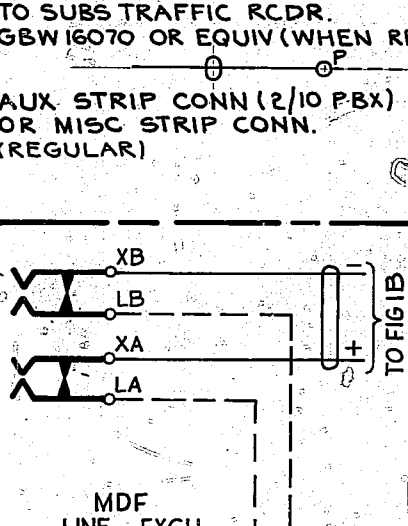


FIG I H

FIG I I

FIG I D

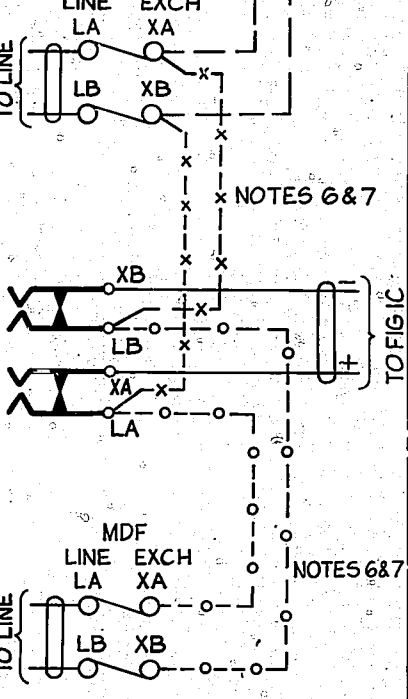
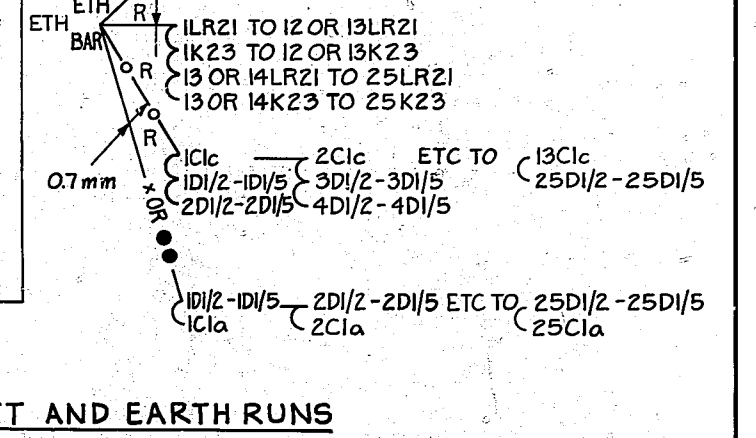


FIG I M

FIG I G

FIG I P

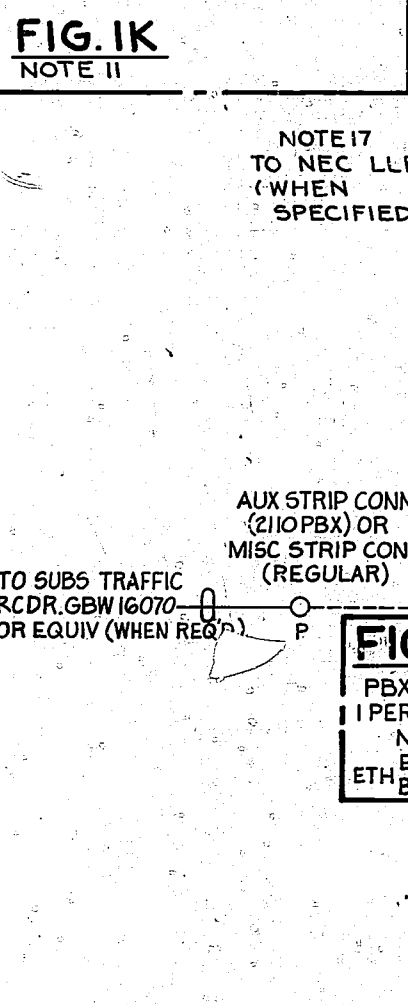
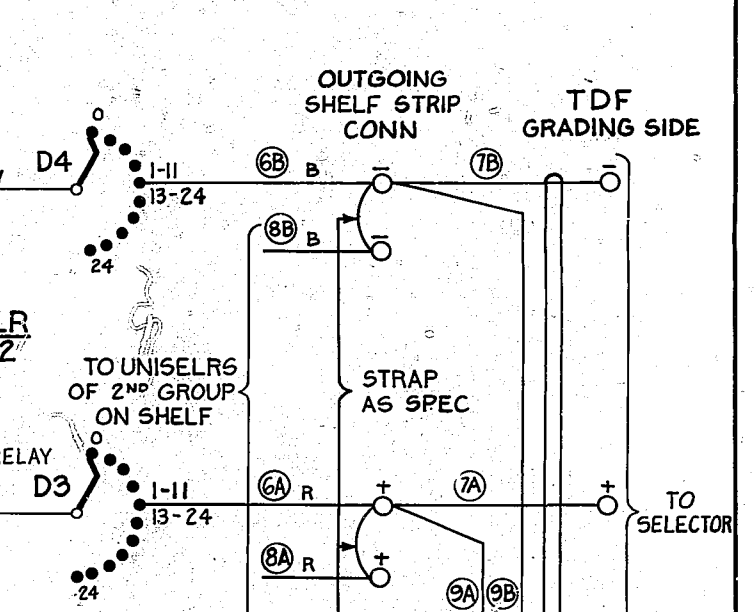
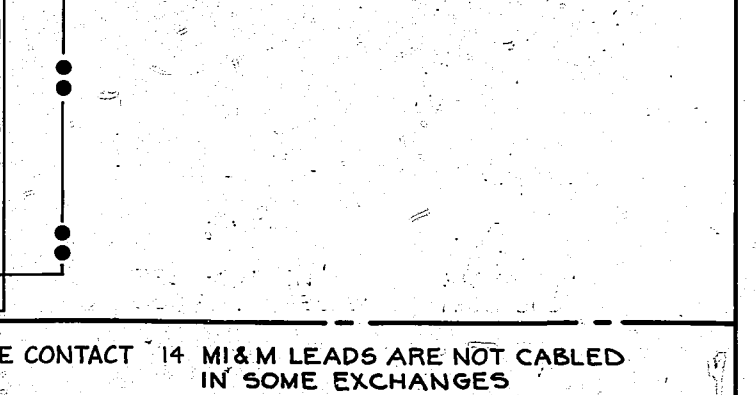


FIG I J

FIG I C

FIG I G



CCTS 2,4,6 ETC OF LOWER GROUP
 CCTS 1,3,5 ETC OF UPPER GROUP
 EVEN N° LINE CCT ODD MULT N°
 NOTE 8

FIG I C SHARED SERVICE Y SUBSCRIBER

- 9 SPRINGS LR 21 & 22 NOT TO MAKE CONTACT BEFORE SPRINGS LR 2 & 3.
- 10 FOR PBX BUSYING TRANSFER LINK FROM BI-B2 TO BI-P.
- 11 AT EXCHANGES WITH FLOOR TYPE MDF USE FIGS I A & I M AT EXCHANGES WITH RACK TYPE MDF OR WITH FLOOR TYPE MDF FITTED WITH TEST JACKS N° 32 USE FIGS I H & I J.
- 12 WHEN USED FOR UNI-DIRECTIONAL LINE (TRAFFIC TO EXCHANGE) DELETE 'NORMAL' + & P LINE JUMPERS AND PROVIDE THOSE SHOWN THUS -II- -II-.
- 13 ON EARLY EQUIPMENT BATT. WIRING WAS BK. OR W.
- 14 MI & M LEADS ARE NOT CABLED IN SOME EXCHANGES
- 15 WHEN LINE CONNECTION IS ASSOCIATED WITH A P.A.B.X. EXCHANGE LINE CIRCUIT GBW 15220 OR EQUIV.-THE RELEVANT STRAP TO TAGE MUST BE DISCONNECTED.
- 16 IF EXCHANGE IS CONVERTED FROM METERING TO NON-METERING OPERATION THE CROSS CONNECTIONS OF THIS SHARED SERVICE EQUIPMENT WILL BE ADAPTED TO PERMIT THE USE OF FIG I B FOR TWO PARTY WORKING AND FIG I C FOR UNI-DIRECTIONAL WORKING FOR RELEVANT CROSS CONNECTION ARRANGEMENTS SEE GBX 14800 SHTS 10&11 FIGS K&L
- 17 WHEN NEC LLE IS USED REMOVE WIRES -AND- TO FIG. I A OR I K.

- NOTES**
- 1 FUSE 1AMP PER 25 SUCCESSIVE CCTS (IRRESPECTIVE OF X OR Y)
 - 2 Ø FOR WIRING SEE GBW 14810 OR EQUIV.
 - 3 ALL WIRING TO BE 0.5mm UNLESS OTHERWISE SPECIFIED.
 - 4 INITIAL WIRING TO INCLUDE STRAP SHOWN -x-x- ON DISCONNECT STRIP CONN.
 - 5 WHEN CLIP-ON TYPE TUBULAR CONDENSERS ARE FITTED PROVIDE FIGS I F & I G AND CONNECTIONS SHOWN -x-x- IN LIEU OF FIG I D & CONNECTIONS SHOWN THUS o-o- WHEN FIGS I N & I P ARE PROVIDED INSERT WIRING SHOWN THUS -o-o-
 - 6 FOR SHARED SERVICE REMOVE JUMPERS OR STRAPS SHOWN -o-o- & STRAPS SHOWN -x-x- INSERT JUMPERS SHOWN -x-x- & STRAPS SHOWN -o-o-
 - 7 FOR EXCLUSIVE SERVICE REMOVE JUMPERS SHOWN -x-x- & STRAPS SHOWN -o-o- INSERT JUMPERS OR STRAPS SHOWN -o-o- & STRAPS SHOWN -x-x-
 - 8 CCTS 1&2, 3&4 ETC OF LOWER GROUP FORM PAIRS. CCT 25 LOWER GROUP FORMS A PAIR WITH CCT 1 OF UPPER GROUP. CCTS 2&3 ETC OF UPPER GROUP FORM PAIRS.

SUBSCRIBER'S LINE CIRCUIT		SHARED SERVICE WITH SUBSCRIBER'S DISCONNECT & DOUBLE HOMING	
NEC LLE & ANI CONNECTION SHOWN (70497)	BB	23.3.81	JR
REDRAWN & METRICATED (157759)	BA	25.5.78	R.E.D
FIGS I N & I P ADDED NOTE 5 AMENDED (4848)	S	17.3.71	B.S.H
AMENDMENT PARTICULARS	ISSUE	DATE	APP'D
NZPO	DRAWN KB	CHECKED	WIRING CIRCUIT
			50V H
GBW 14800			

5 Centimeters 10

15

20

25

30

35

40

45

50

55

60