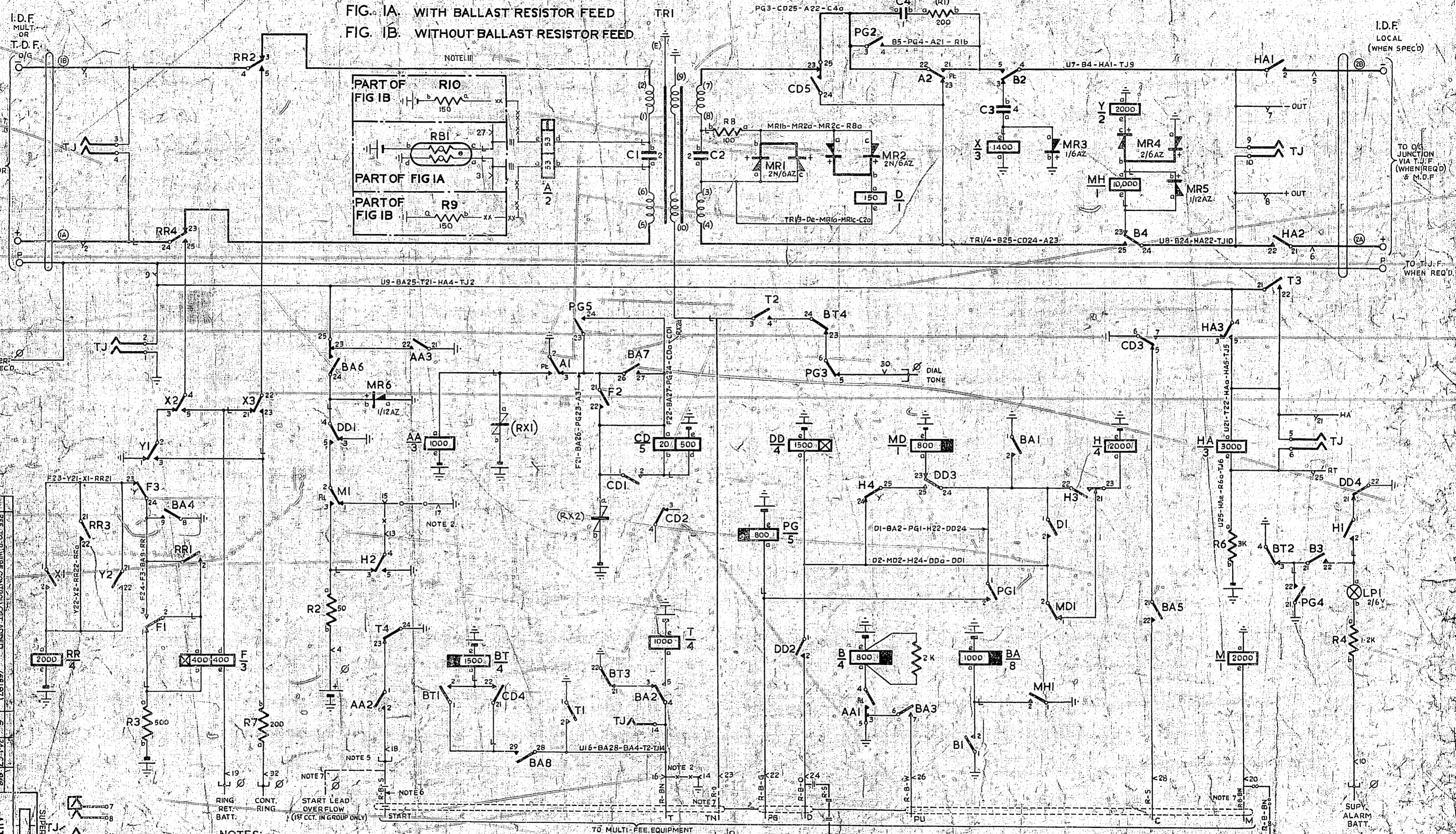


FIG. 1A. WITH BALLAST RESISTOR FEED
 FIG. 1B. WITHOUT BALLAST RESISTOR FEED



REF. TO P. WIRE CONTROL GET ADDED	(581917)	6	24-1-67	2/8
TRAIL END FROM U123-DI-ETED	(58724)	5	6-1-62	
R3 REPLACED BY R3X	(41760)	4	3-6-61	
FIG. 1A AND NOTE 11 ADDED	(79476)	3	8-8-58	2/8
PG-VALS 2000 OHMS	(68227)	2	5-7-55	2/8
	(6306)	1	1-19-55	2/8

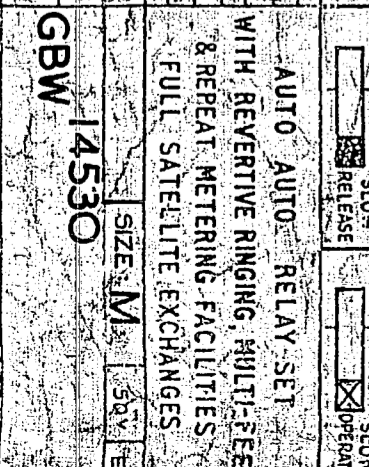
AMENDMENTS PARTICULARS

ISSUE DATE

GBW 14530

SIZE M

DATE



- NOTES:**
- FUSING: 1.5A PER CIRCUIT.
 - STRAP U15-17 WHEN M/FEE & MET. CONTROL EQUIPT. IS PROVIDED. STRAP U15-15 & U14-16 WHEN NEITHER M/FEE NOR MET. CONTROL EQUIPT. IS PROVIDED. STRAP U14-16 & U15-17 WHEN MET. CONTROL BUT NO M/FEE EQUIPT. IS PROVIDED.
 - JACK POINTS U9-11 & U14-10 MAKE CONTACT WHEN RELAY SET IS REMOVED.
 - FOR WIRING SEE GBW 10640 OR EQUIV.
 - THE START LEAD IS COMMONED TO ALL RELAY SETS IN THE SAME GROUP ONLY WHEN MULTI-FEE FINDER IS PROVIDED.
 - START LEAD, SHOWN ---, REQUIRED ONLY WHEN MULTI-FEE FINDER IS NOT PROVIDED.
 - CONNECTIONS SHOWN --- PROVIDED ONLY WHEN REQUIRED.
 - D LEAD TO METERING CONTROL RELAY SET IS REQUIRED WHEN MULTI-FEE RELAY SET IS NOT PROVIDED. M LEAD SHOWN --- REQUIRED WHEN M/F FINDER IS NOT PROVIDED BUT WHEN M/F RELAY SET IS PROVIDED; ALSO WHEN NEITHER MULTI-FEE FINDER NOR RELAY SET IS PROVIDED.
 - ALL WIRING TO BE 25 SWG UNLESS OTHERWISE SPECIFIED.
 - FOR NEW WORK SPECIFY FIG 1B. SOME EARLY RELAY SETS SUPPLIED IN ACCORDANCE WITH FIG 1A HAVE BEEN CONVERTED ON SITE TO FIG 1B.

