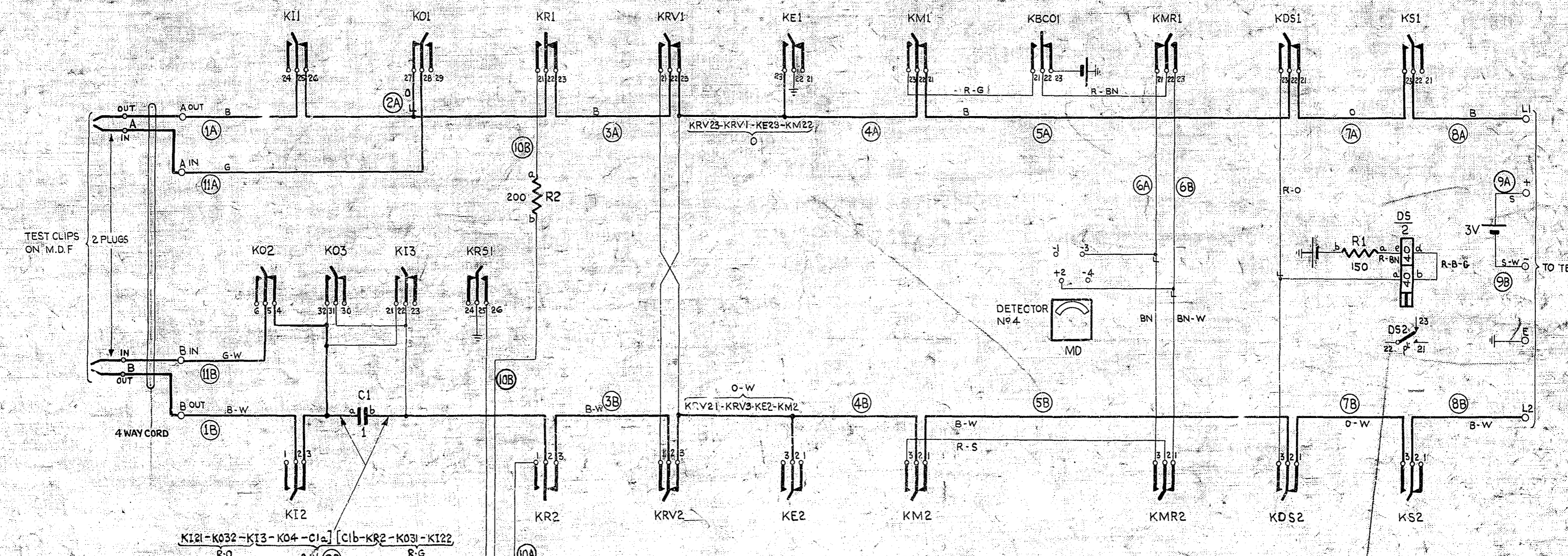
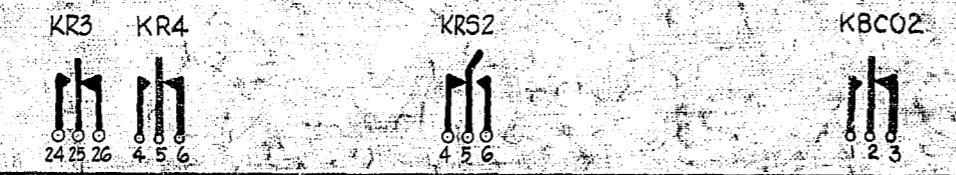
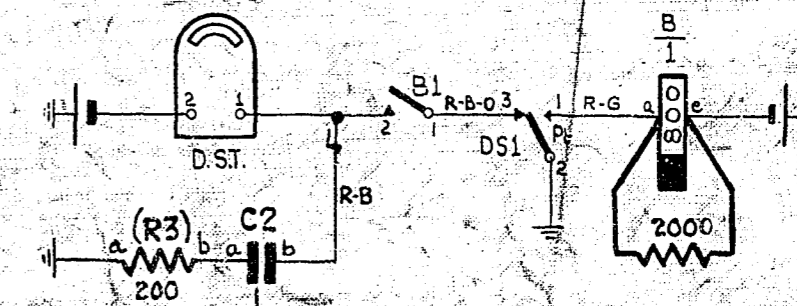
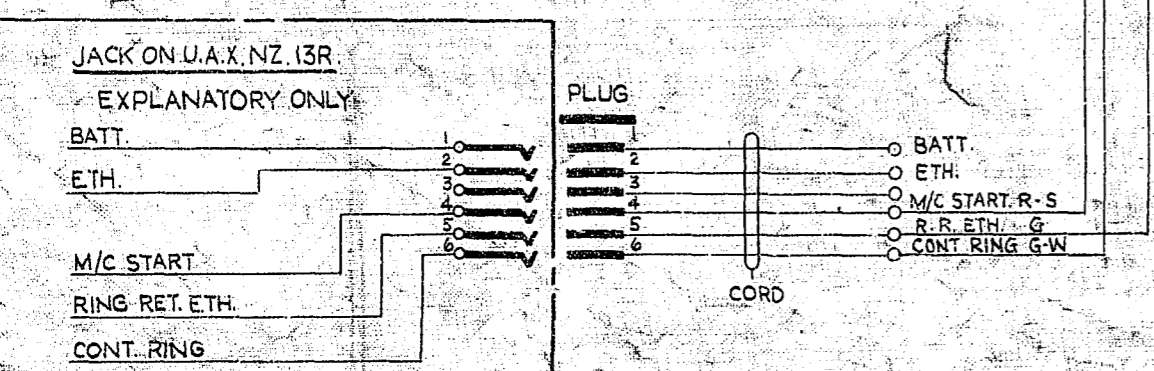


Centimeters 0 5 10 15 20 25



BATT. BK. BATT. TERM - KBCO23 - DST2 - R1b - Be  
 ETH. R. ETH. TERM - KE22 - KR525 - R3a - DS2 - TERM "E"

- NOTES.
- 1 FUSING 1.5A PER CIRCUIT.
  - 2 THE TELEPHONE TO BE OF THE RURAL PARTY LINE TYPE USED IN NEW ZEALAND.
  - 3 UNLESS OTHERWISE SPECIFIED ALL WIRE TO BE 23-S.W.G.



EARTH (KE)	IN (KI)	OUT (KO)	RING (KR)	REVERSE (KR)	RING START (KR)	VOLTMETER (KM)	VOLTMETER BATT. C.O. (KBCO)	VOLTMETER REVERSE (KMR)	DIAL SPEED (KDS)	SPEAK (KS)
2	3	3	4	2	2	2	2	2	2	2

<input type="checkbox"/> SLOW RELEASE <input checked="" type="checkbox"/> SLOW OPERATE	
<b>MULTI-PARTY LINE UNIT</b> <b>LINE TESTING CIRCUIT</b> U.A.X. NZ. 13R	
KEY "KR5" ADDED & KEY UNIT "KR3" MADE SPARE (42777)	2 24.7.61
(34728)	1 20.12.54
AMENDMENT PARTICULARS	ISSUE DATE APPD
N.Z.P.O.	GBW. 13710